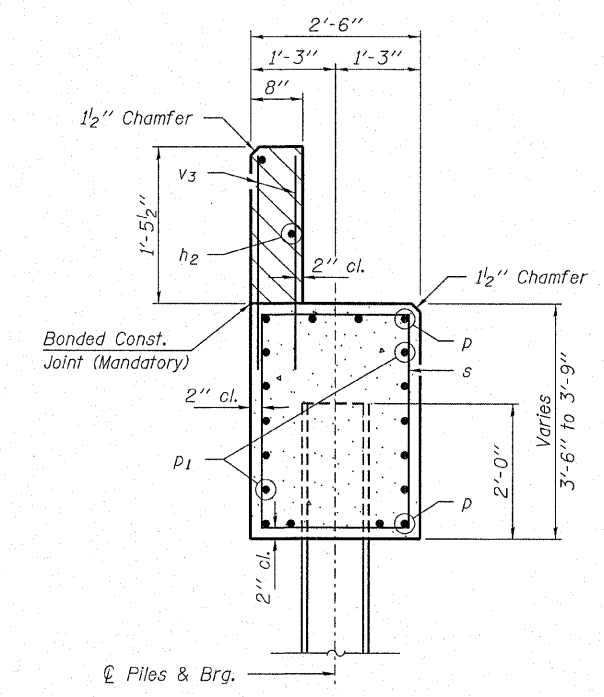
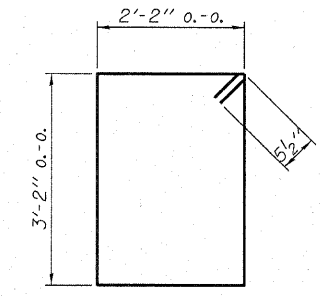


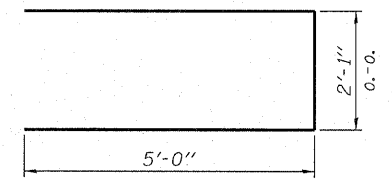
PLAN



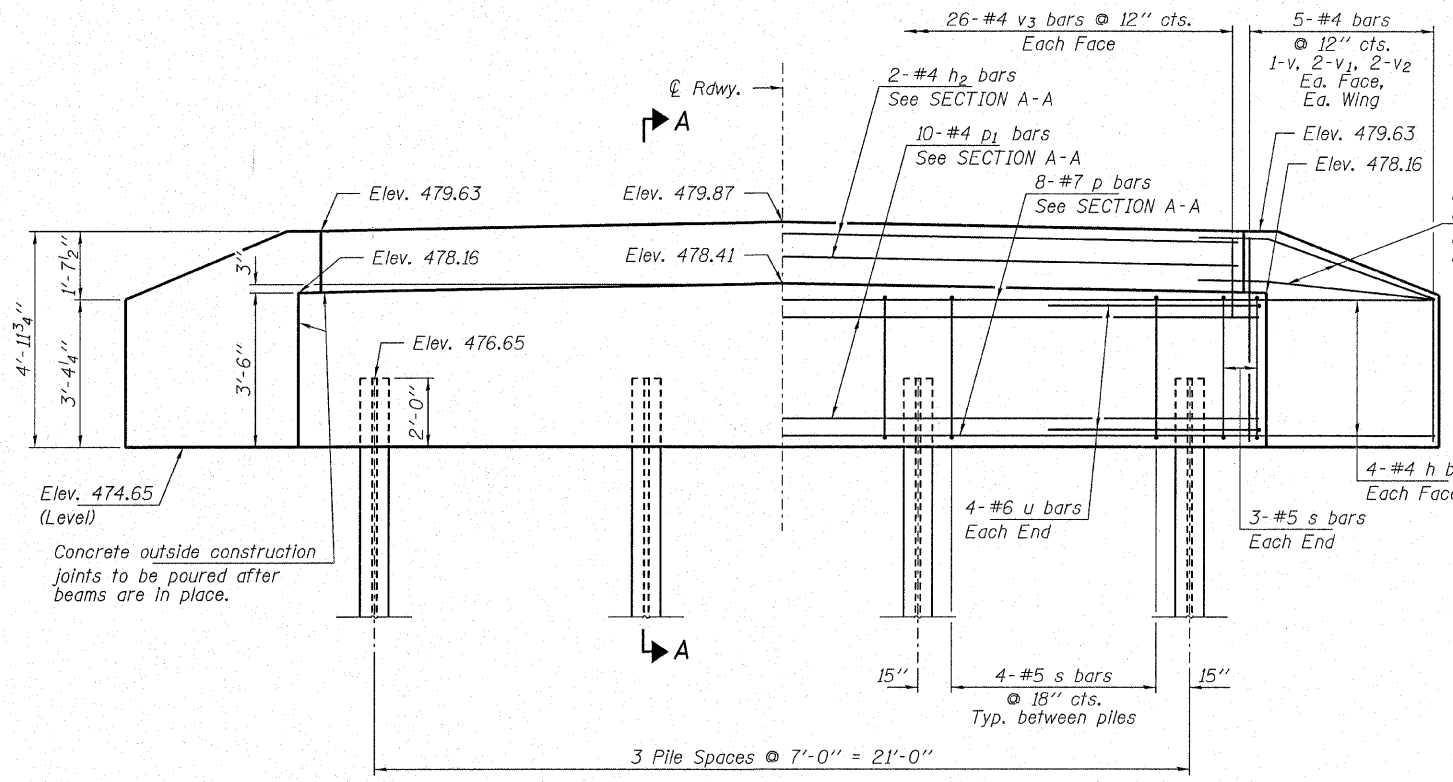
SECTION A-A
Hatched area to be poured after beams are in place.



BAR s



BAR u



ELEVATION

Note: Extend h bars into abutment cap.

Each Wing Bend in field.
Fan 2-#4 h bars (B.F.)
Fan 2-#4 h1 bars (F.F.)

PILE DATA

Type: Steel HP12x53
 No. Req'd (S. Abut.): 4
 Factored Resistance Available (Rf): 209 Kips/Pile
 Nominal Required Bearing (Rn): 419 Kips/Pile
 Est. Length: 40 Ft./Pile

Notes: The Steel H-Piles shall be according to AASHTO M270 Grade 50.

BILL OF MATERIAL - N. ABUT.

BAR	NO.	SIZE	LENGTH	SHAPE
h	20	#4	5'-6"	—
h1	4	#4	4'-0"	—
h2	2	#4	25'-2"	—
p	8	#7	25'-2"	—
p1	10	#4	25'-2"	—
s	18	#5	11'-7"	□
u	8	#6	12'-1"	—
v	4	#4	4'-6"	—
v1	8	#4	4'-0"	—
v2	8	#4	3'-0"	—
v3	52	#4	2'-4"	—
Concrete Structures			Cu. Yd.	10.7
Reinforcement Bars			Pound	1,190
Steel Piles HP12x53			Foot	160

DESIGNED - A.S.L.
CHECKED - S.W.M.
DRAWN - D.T.M.
CHECKED - D.A.B.

HAMPTON, LENZINI & RENWICK, INC.
 CIVIL & STRUCTURAL ENGINEERS
 LAND SURVEYORS
 3085 STEVENSON DRIVE, SUITE 201
 SPRINGFIELD, ILLINOIS 62703
 (217) 546-3400

T.R.	SECTION	COUNTY	TOTAL SHEETS	SHEET NO.
10	03-03113-00-BR	JEFFERSON	15	12
CASNER ROAD DISTRICT		CONTRACT NO. 99362		
FED. ROAD DIST. NO.		ILLINOIS FED. AID PROJECT		

**NORTH ABUTMENT
STRUCTURE NO. 041-3742**