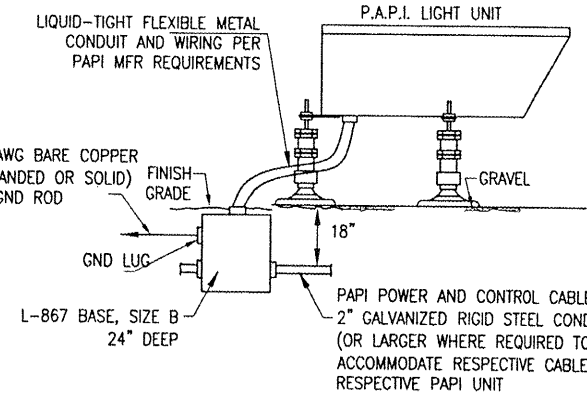
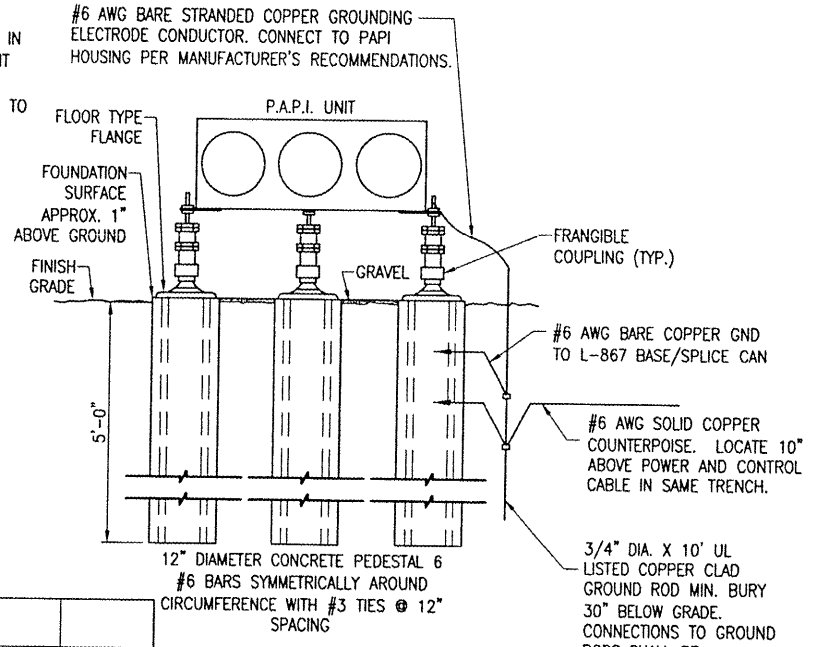


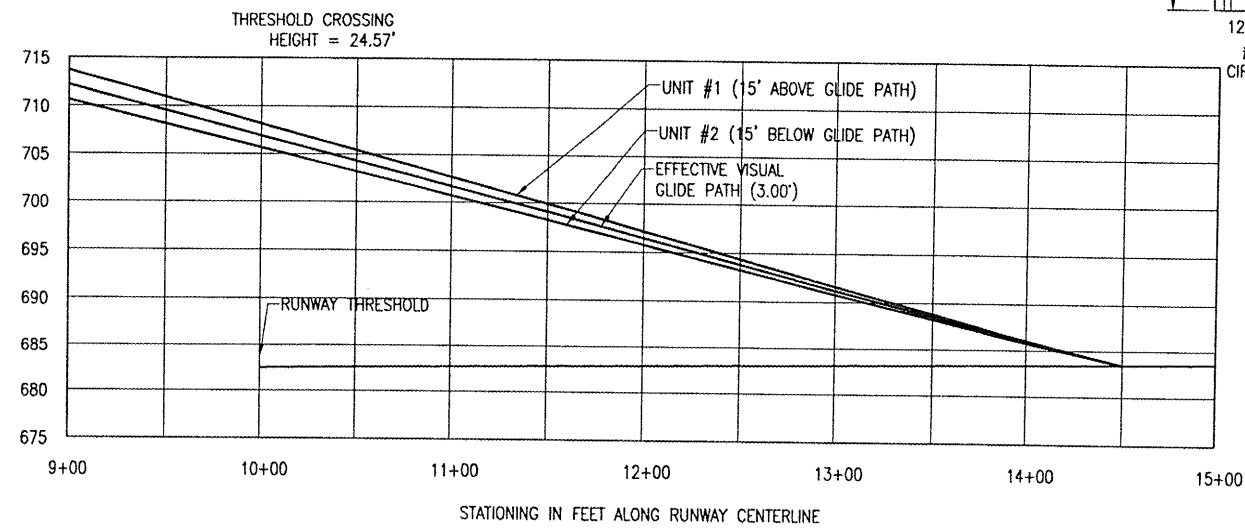
**FRONT ELEVATION
POWER AND CONTROL UNIT**
"NOT TO SCALE"



**SIDE ELEVATION
P.A.P.I. LIGHT UNIT**
"NOT TO SCALE"



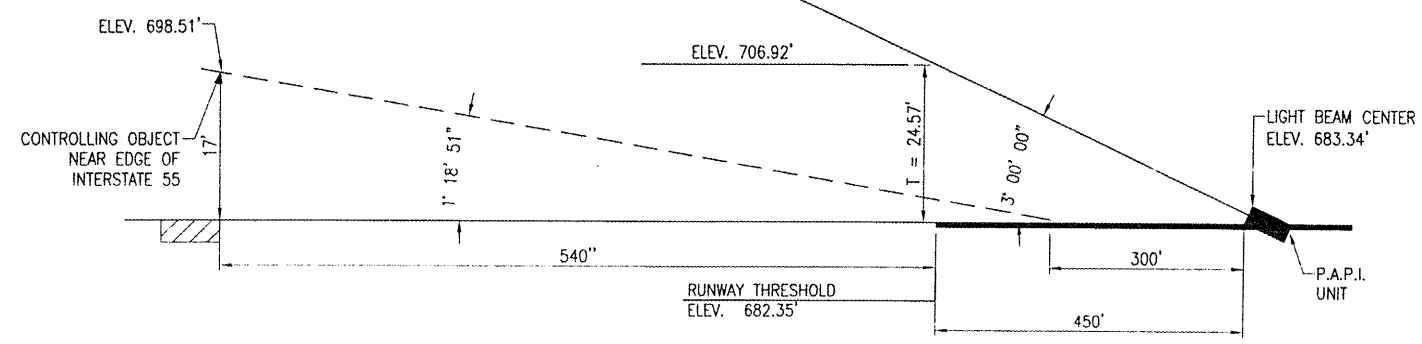
**FRONT ELEVATION
P.A.P.I. LIGHT UNIT**
"NOT TO SCALE"



RUNWAY CENTERLINE PROFILE

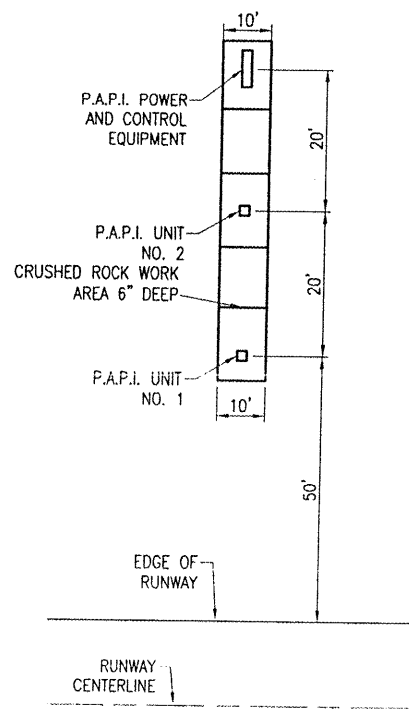
P.A.P.I. NOTES

- THE PROPOSED PRECISION APPROACH PATH INDICATOR (PAPI) SYSTEM WILL BE PLACED AT THE LOCATION SHOWN ON SHEET NO.11.
- THE PROPOSED CONCRETE PEDESTALS WILL BE AS DETAILED ON THIS SHEET. THE NUMBER OF PEDESTALS CONSTRUCTED FOR EACH PAPI UNIT WILL DEPEND ON THE UNIT SELECTED BY THE CONTRACTOR FOR INSTALLATION.
- SIX (6") INCHES OF GRAVEL ON TOP OF BLACK PLASTIC WILL BE PLACED UNDER EACH PAPI UNIT TO HALT VEGETATION GROWTH.
- EACH PAPI UNIT WILL BE CONSTRUCTED SUCH THAT THE BEAM CENTERS WILL BE WITHIN ±1" OF ELEVATION 683.34.
- THE PROPOSED POWER CABLE TO THE PAPI SYSTEM WILL BE 3-1/C NO. 6, 600V., TYPE XLP-USE UNDERGROUND CABLE IN 1-1/4" UNIT DUCT. THIS CABLE WILL BE PLOWED OR TRENCHED IN PLACE AT A MINIMUM DEPTH OF 18" BELOW FINISH GRADE.
- THE PAPI INSTALLATION WILL BE PAID FOR UNDER ITEM: AR125620 ABBREVIATED PAPI (L-881 SYSTEM) PER LUMP SUM.
- THE POWER CABLE WILL BE PAID FOR UNDER ITEM: AR108656 3/C #6 600V UG. CABLE IN UD PER LIN. FT.
- QUANTITY OF PROPOSED POWER CABLE 4300 LIN. FT.



P.A.P.I. AIMING DIAGRAM 9 END
"NOT TO SCALE"

PAPI DATA-RUNWAY END 9			
	P.A.P.I. UNIT #1	P.A.P.I. UNIT #2	P AND C UNIT
DISTANCE FROM RUNWAY C	87.5'	107.5'	127.5'
AIMING ANGLE	3°15'	2°45'	N/A
APPROXIMATE GROUND ELEVATION	680.8'	679.4'	679.0'
P.A.P.I. UNIT APERTURE ELEVATION	683.34'	683.34'	N/A



P.A.P.I. LAYOUT DETAIL
"NOT TO SCALE"

BY	
REVISION	
DATE	
LITCHFIELD MUNICIPAL AIRPORT LITCHFIELD, ILLINOIS	
A.I.P. PROJ.: J-17-0063-B13	
IL PROJ.: 31F-3559	
Proj. No. 814-06RWD.0800	
Drawn: R-541ELE.DWG	
Scale: N/A	
Date: 01/29/08	
LAYOUT: MDR	01/15/08
DRAWN: MDR	01/15/08
REVIEWED: CAH/KNL	01/29/08
HANSON Hanson Professional Services Inc. 1525 South Sixth Street Springfield, Illinois 62703-2886 Offices Nationwide	
PROPOSED P.F.C. ON RUNWAY 9-27	
PROPOSED PAPI DETAILS AND NOTES RUNWAY 9 END	
13	