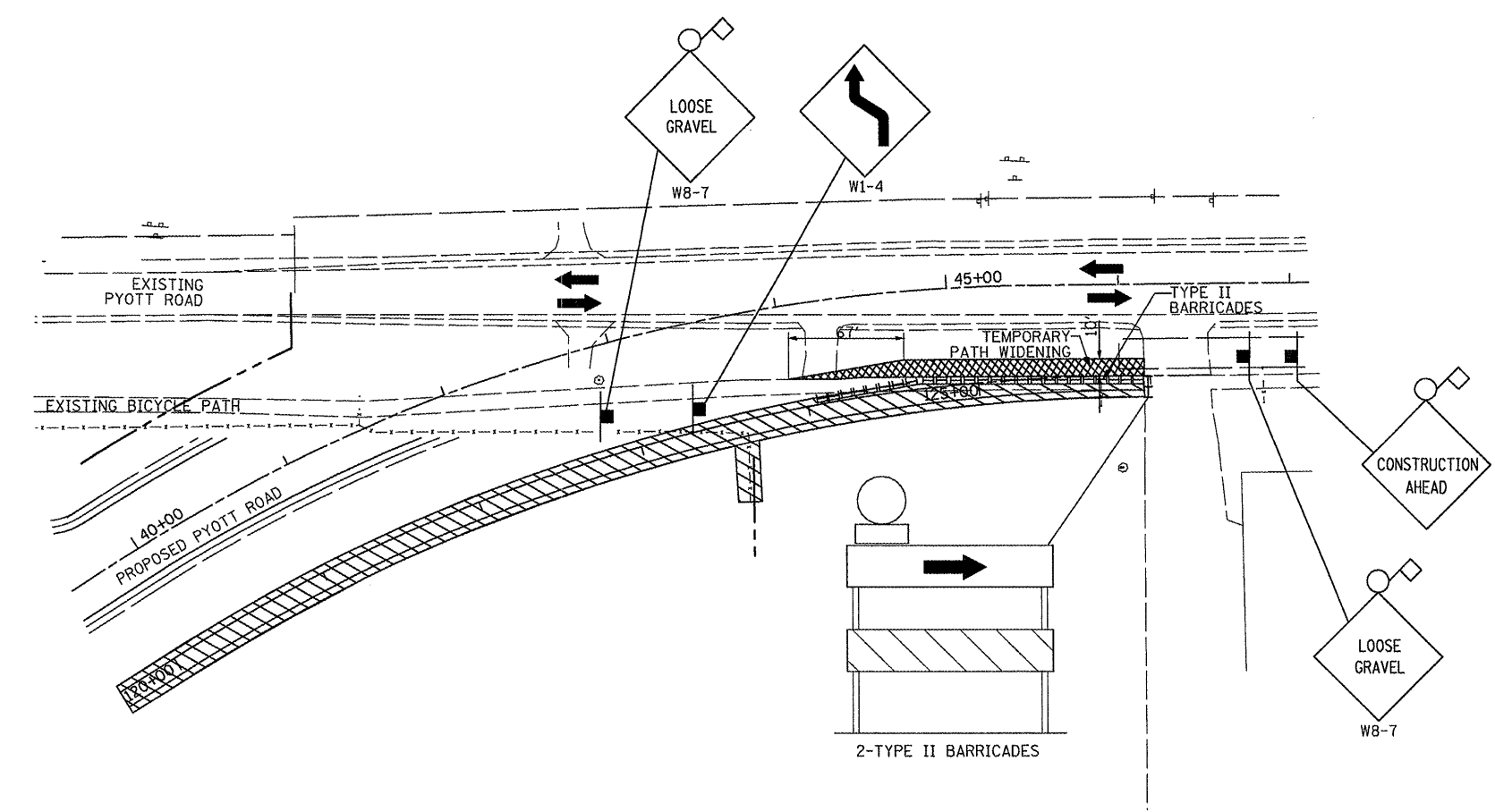


DETAIL "A"



DETAIL "B"

- LEGEND**
- WORK AREA
 - COMPLETED ROADWAY SURFACE
 - INTERIM ROADWAY SURFACE
 - SIGN LOCATION
 - TYPE II BARRICADE WITH STEADY BURNING LIGHTS
 - DIRECTION OF TRAFFIC
 - FLASHING LIGHT, SIGN MOUNTED
 - 18" X18" (MIN.) ORANGE WARNING FLAG
 - TYPE III BARRICADE
 - ROW LINE
 - DRUM OR BARRICADE
 - CHANGEABLE MESSAGE SIGN, TO REMAIN THROUGH ALL STAGES
- FOR MORE INFORMATION SEE SHEET 8

- NOTES**
1. MAINTAIN TWO LANES OF TRAFFIC ON ROADWAY. APPLY TRAFFIC CONTROL TO ALERT BICYCLISTS AND DRIVERS OF TRUCKS ACCESSING THE WORKSITE. NO ROADWAY LANE CLOSURES ARE NEEDED DURING THIS STAGE.
 2. TEMPORARILY WIDEN BICYCLE PATH WITH AGGREGATE BASE COURSE, TYPE B TO MAINTAIN 2 LANES. PLACE TYPE II BARRICADES TO SEPARATE WORK AREA AND BICYCLE PATH.
 3. REMOVE FENCE AS NOTED IN DETAILS IN ORDER TO COMPLETE BICYCLE PATH CONNECTIONS.
 4. BICYCLE PATH SHIFT PANELS, SLOW PANELS, NARROW PATH PANELS, AND CONSTRUCTION AHEAD SIGNS ARE INCIDENTAL TO "TRAFFIC CONTROL AND PROTECTION".

Hanson Professional Services Inc.
 200 S. Olive Drive
 Oak Brook, Illinois 60123
 © Copyright Hanson Professional Services Inc. 2009



FILE NAME =	USER NAME = B1a1n01219	DESIGNED - DRM	REVISED -
h:\05_jobs\00841\05b0021\civil part b\sheet\c-int-mt102.sht		DRAWN - CBP	REVISED -
PLOT SCALE = 99.9998 "/> IN.		CHECKED - AAH	REVISED -
PLOT DATE = 02/25/2009, 11:38 AM		DATE - 05/21/08	REVISED -

**VILLAGE OF
LAKE IN THE HILLS, ILLINOIS**

CONSTRUCTION PHASING - STAGE I DETAILS

SCALE: 1" = 50'	COUNTY	TOTAL SHEETS	SHEET NO.
	MCHENRY	143	9
	AIP NO. 3-17-0112-810 ILLINOIS IDA NO. 3CK-3807		