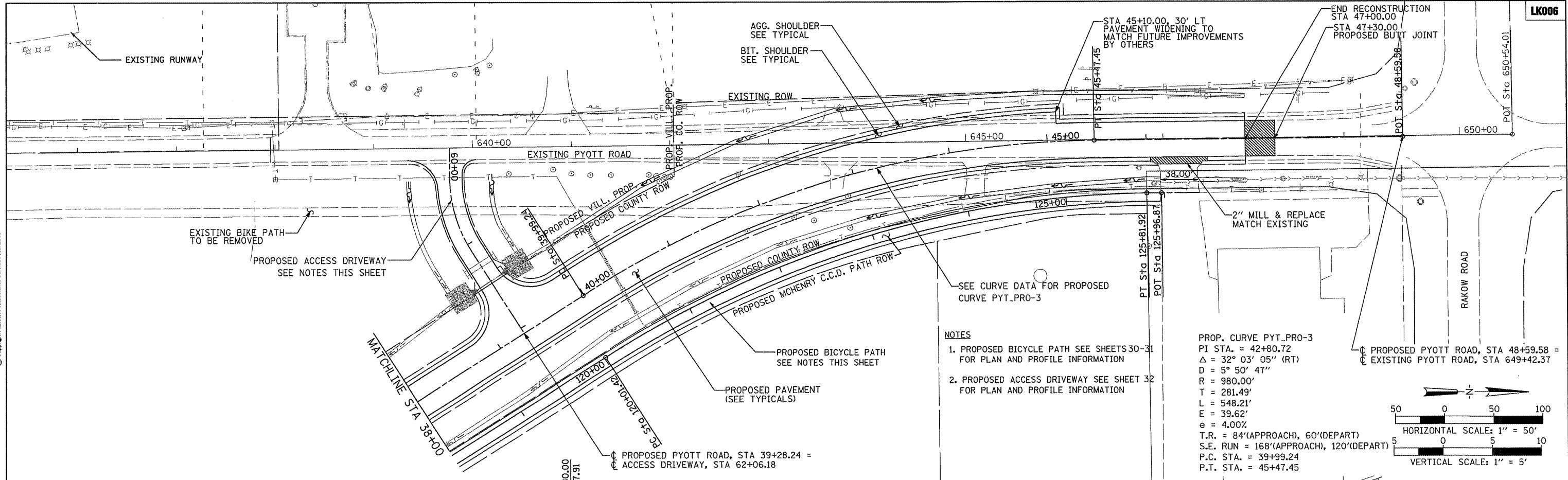


Hanson Professional Services Inc.
 Suite 200, 815 Commerce Drive
 Oak Brook, Illinois 60523
 © Copyright Hanson Professional Services Inc. 2009



PROFILE	SURVEYED	DATE
	PLOTTED	
	BY	
	NOTE BOOK	
	NO.	



NOTES

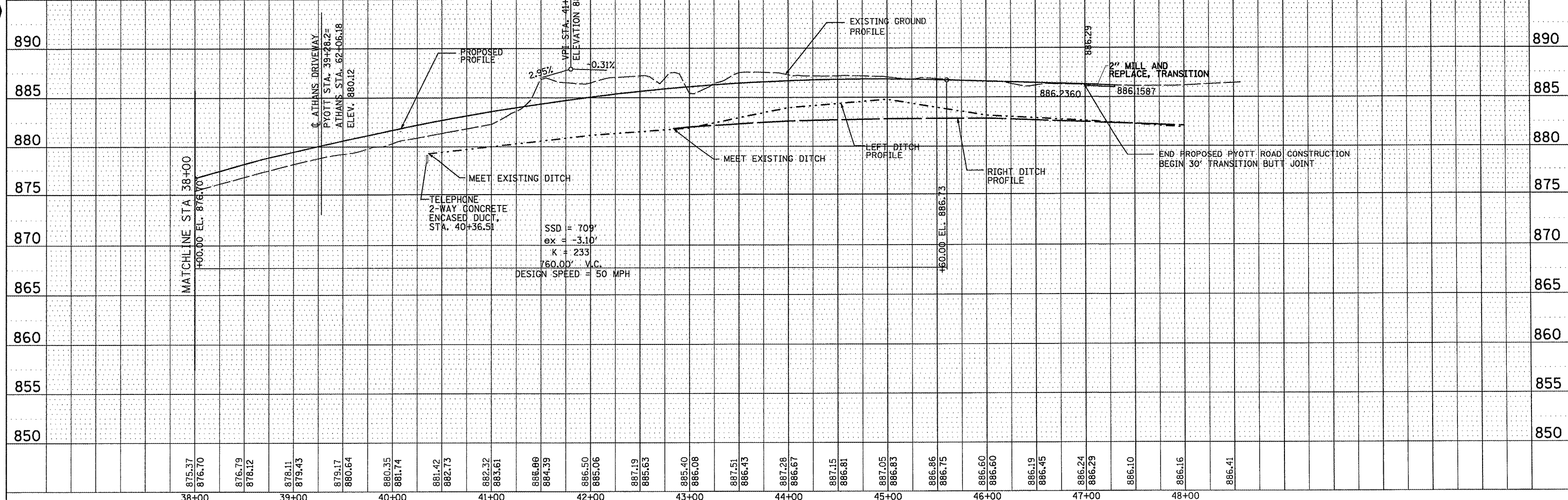
1. PROPOSED BICYCLE PATH SEE SHEETS 30-31 FOR PLAN AND PROFILE INFORMATION
2. PROPOSED ACCESS DRIVEWAY SEE SHEET 32 FOR PLAN AND PROFILE INFORMATION

PROP. CURVE PYT_PRO-3
 PI STA. = 42+80.72
 $\Delta = 32^\circ 03' 05''$ (RT)
 $D = 5^\circ 50' 47''$
 $R = 980.00'$
 $T = 281.49'$
 $L = 548.21'$
 $E = 39.62'$
 $e = 4.00\%$
 $T.R. = 84'$ (APPROACH), $60'$ (DEPART)
 $S.E. RUN = 168'$ (APPROACH), $120'$ (DEPART)
 $P.C. STA. = 39+99.24$
 $P.T. STA. = 45+47.45$

END RECONSTRUCTION STA 47+00.00
 STA 47+30.00 PROPOSED BUTT JOINT

PROPOSED PYOTT ROAD, STA 48+59.58 =
 EXISTING PYOTT ROAD, STA 649+42.37

HORIZONTAL SCALE: 1" = 50'
 VERTICAL SCALE: 1" = 5'



FILE NAME =	USER NAME = B1air01219	DESIGNED - BLB	REVISED -
J:\05Jobs\00041\0508021\Civil Part B\Sheets\7FP-PR3.sht		DRAWN - CBP	REVISED -
		CHECKED - LDH	REVISED -
		DATE - 05/21/08	REVISED -

VILLAGE OF LAKE IN THE HILLS, ILLINOIS

PYOTT ROAD PLAN AND PROFILE

SCALE: 1"=50' SHEET NO. 29 OF 143 SHEETS STA. 38+00 TO STA. 48+00

F.A. RTE.	SECTION	COUNTY	TOTAL SHEETS	SHEET NO.
			143	29
CONTRACT NO.				
AIP No. 3-17-0112-B10 ILLINOIS IDA No. 3CK-3807				