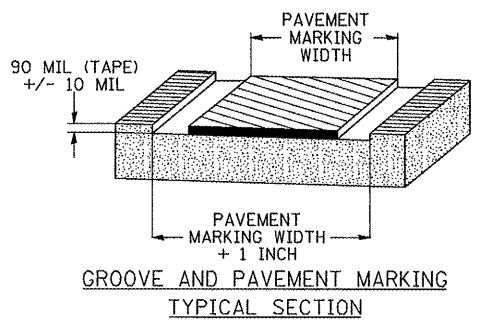
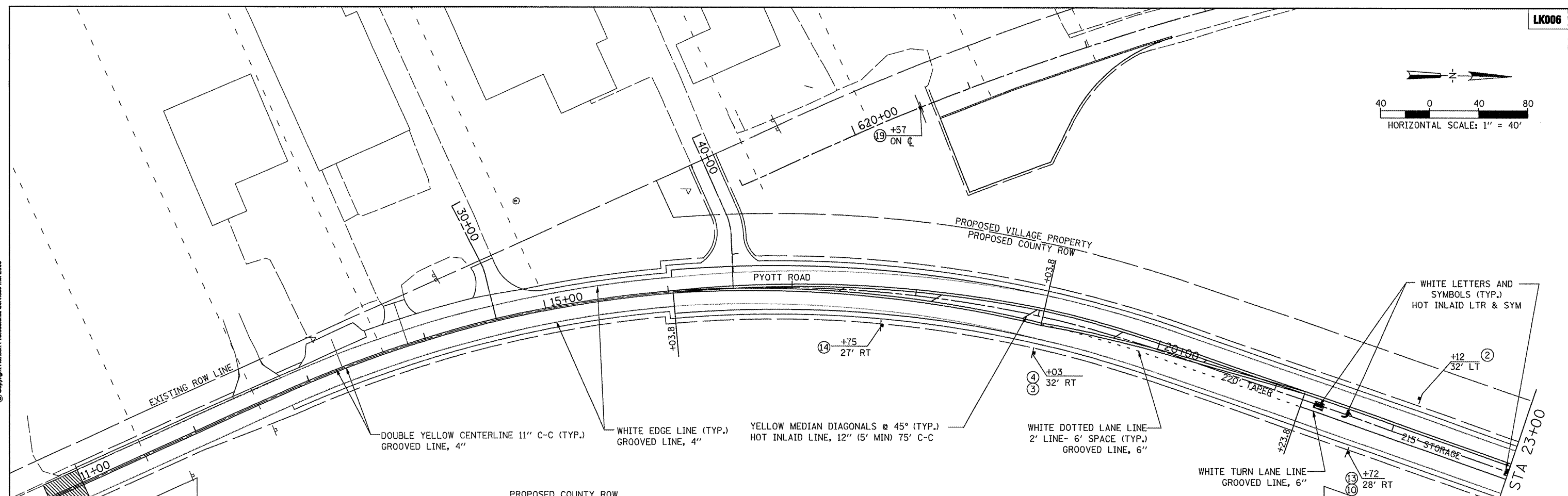


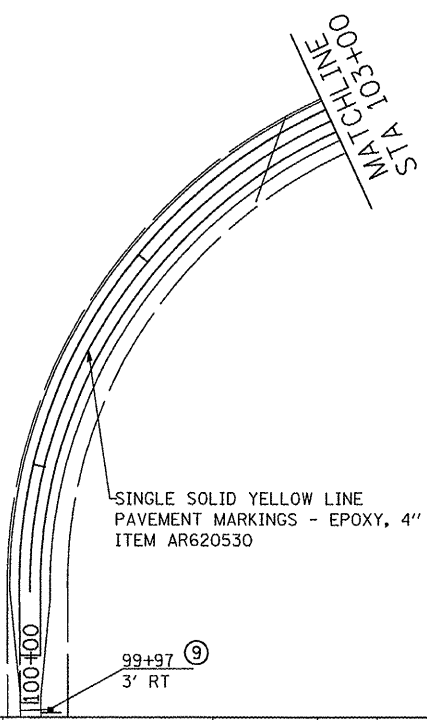
Hanson Professional Services Inc.
 Suite 200, 815 Commerce Drive
 Oak Brook, Illinois 60528
 © Copyright Hanson Professional Services Inc. 2008



- NOTES**
- SEE IDOT DISTRICT ONE TYPICAL PAVEMENT MARKINGS FOR DETAILS.
 - ALL PAVEMENT MARKINGS SHALL BE 3M STAMARK HIGH PERFORMANCE PAVEMENT TAPE INSTALLED IN BOTH GROOVED (L380WR-ES) AND HOT INLAID (L380IES) FASHION. ALL MARKINGS, WHETHER GROOVED OR INLAID, SHALL BE PER MANUFACTURER'S REQUIREMENTS. ALL MARKINGS SHALL BE WIDTH, COLOR, AND TYPE AS NOTED ON PLANS. STOP BARS, LETTERS, SYMBOLS, DIAGONLS AND CHEVRONS SHALL BE HOT INLAID (L380IES). LANE LINES, EDGE LINES AND SKIP DASH LINES SHALL BE GROOVED (L380WR-ES).
 - DIMENSIONS AND LOCATIONS SHOWN FOR PAVEMENT MARKINGS ARE APPROXIMATE. EXACT DIMENSIONS AND LOCATIONS SHALL BE DETERMINED IN THE FIELD BY THE RESIDENT ENGINEER.
 - CENTERLINE STRIPE ON BIKE PATH IS EPOXY.
 - EXISTING SIGNS TO BE REMOVED AT THE DIRECTION OF THE RESIDENT ENGINEER AFTER COMPLETION OF STAGE IV. EACH SIGN UNIT WILL BE COUNTED AS ONE REGARDLESS OF THE NUMBER OF SIGNS INCLUDED IN THAT UNIT. ALL SIGNS ARE TO BE RETURNED TO THE CLOSEST MCDOT HIGHWAY YARD TO THE CONSTRUCTION SITE.

SIGN LEGEND

| | | | | | | | | | | |
|--------------------------|--------------------------|--|-----------------------------|-----------------------------|-----------------------------|------------------------------|---------------------------|---------------------------|--------------------------|--------------------------|
| ① R1-1 30"X30" | ② R2-1 24"X30" | ③ R3-7L 30"X30" | ④ R3-H8BA 30"X42" | ⑤ R3-H8BB 30"X42" | ⑥ R3-H8BD 30"X42" | ⑦ R5-1 30"X30" | ⑧ W1-2L 18"X18" | ⑨ W1-2R 18"X18" | ⑩ M6-1 21"X15" | ⑪ W1-7 36"X18" |
| ⑫ W3-3 36"X36" | ⑬ I-5 30"X30" | ⑭ D3-2 66"X42" * SIGN TEXT CHANGES DEPENDING DIRECTION OF TURN | ⑮ R2-1 24"X30" | ⑯ W14-2 30"X30" | ⑰ M1-6 24"X24" | ⑱ W17-1100 36"X12" | ⑲ W14-1 30"X30" | | | |



| | | | | | | | | |
|--|------------------------|----------------|-----------|---|--|---|--------------|-----------|
| FILE NAME = I:\05\Jobs\08841\059802\Civil Part B\Sheets\C-7PMK-PRL.aht | USER NAME = Blain01219 | DESIGNED - DSY | REVISED - | VILLAGE OF LAKE IN THE HILLS, ILLINOIS | PROPOSED PYOTT ROAD PAVEMENT MARKING AND SIGNING PLAN | COUNTY | TOTAL SHEETS | SHEET NO. |
| PLOT SCALE = 80.0000' / IN. | DRAWN - DSY | CHECKED - BLB | REVISED - | | | MCHENRY | 143 | 40 |
| PLOT DATE = 02/26/2009, 11:05 AM | DATE - 05/21/08 | REVISED - | | | | AIP NO. 3-17-0112-B10 ILLINOIS IDA NO. 3CK-3807 | | |
| | | | | | | | | |