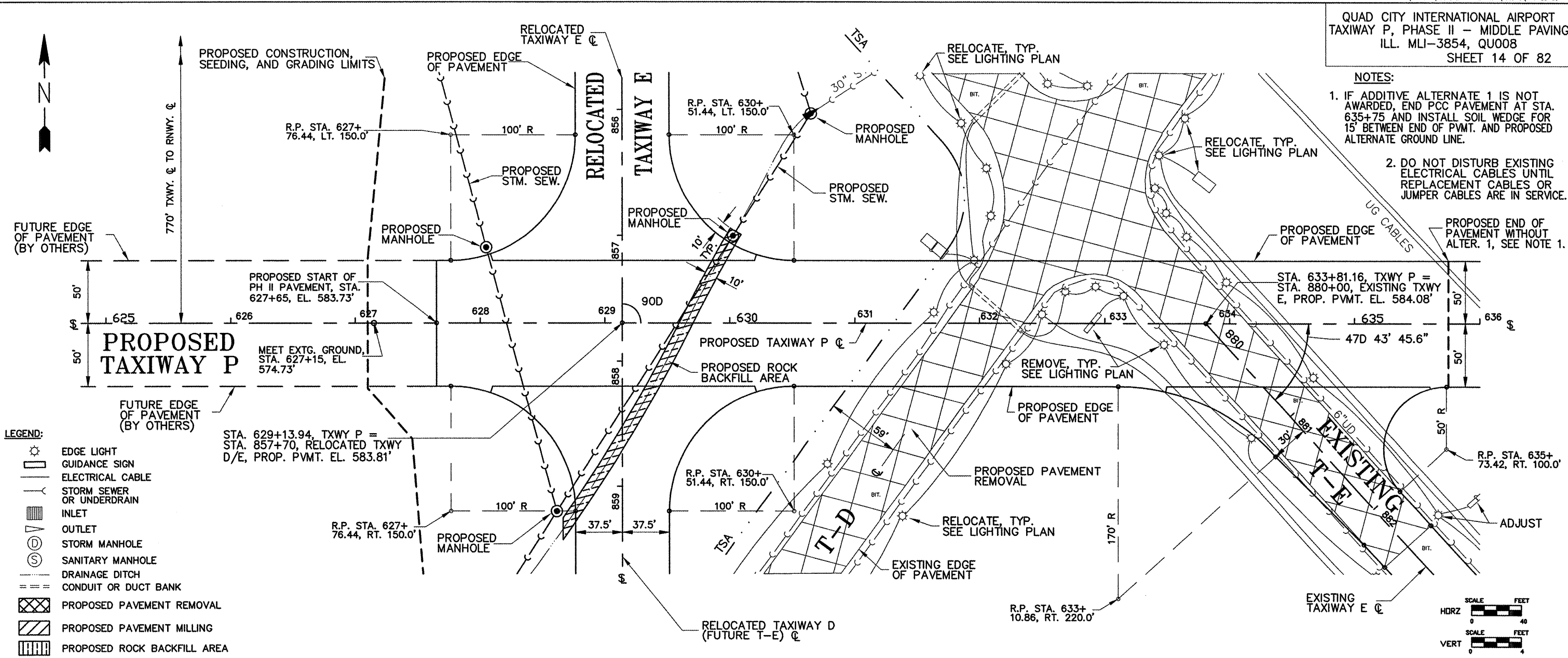
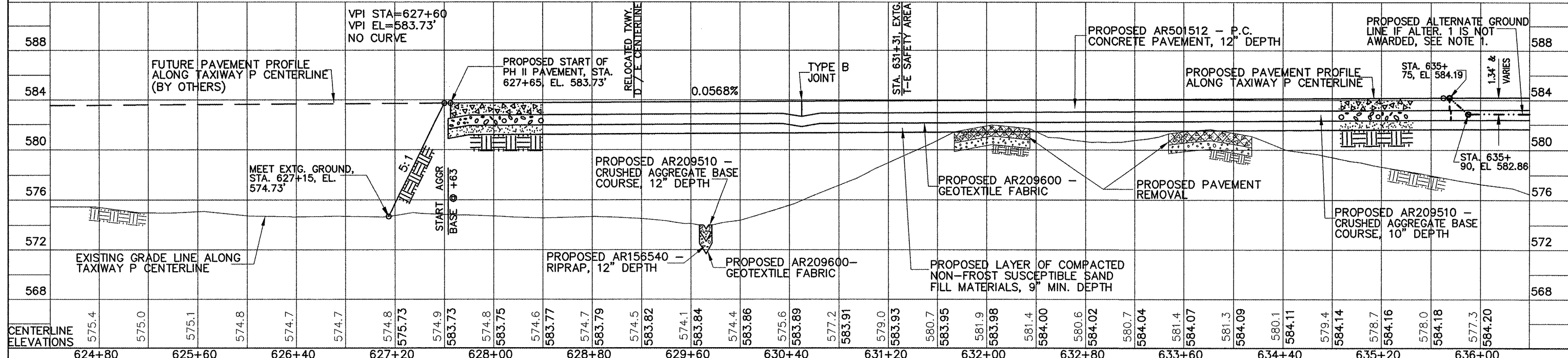
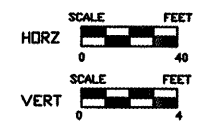


QUAD CITY INTERNATIONAL AIRPORT
 TAXIWAY P, PHASE II - MIDDLE PAVING
 ILL. MLI-3854, QU008
 SHEET 14 OF 82

- NOTES:**
- IF ADDITIVE ALTERNATE 1 IS NOT AWARDED, END PCC PAVEMENT AT STA. 635+75 AND INSTALL SOIL WEDGE FOR 15' BETWEEN END OF PVMT. AND PROPOSED ALTERNATE GROUND LINE.
 - DO NOT DISTURB EXISTING ELECTRICAL CABLES UNTIL REPLACEMENT CABLES OR JUMPER CABLES ARE IN SERVICE.



- LEGEND:**
- EDGE LIGHT
 - GUIDANCE SIGN
 - ELECTRICAL CABLE
 - STORM SEWER OR UNDERDRAIN
 - INLET
 - OUTLET
 - STORM MANHOLE
 - SANITARY MANHOLE
 - DRAINAGE DITCH
 - CONDUIT OR DUCT BANK
 - PROPOSED PAVEMENT REMOVAL
 - PROPOSED PAVEMENT MILLING
 - PROPOSED ROCK BACKFILL AREA



TAXIWAY P PLAN & PROFILE, STA 625+00 TO STA 635+80

G:\airport\A08T032 TP MID PVMT\PP.DWG, 4/1/2009 8:00:49 AM, jefr