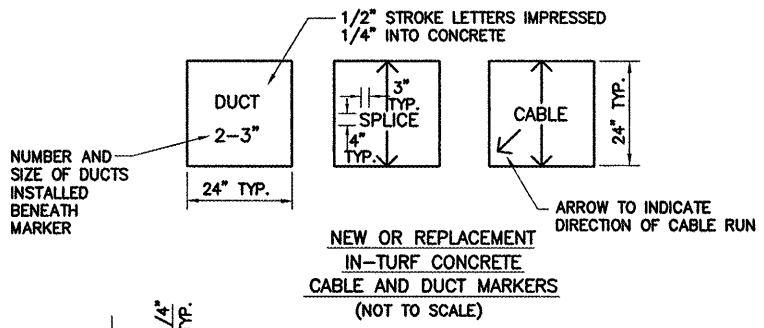


PROPOSED GUIDANCE SIGNS

TAXI GUIDANCE SIGNS ISOLATION TRANSFORMER DATA*	
NUMBER OF MODULES	TRANSFORMER WATTAGE
1	100
2	300
3	500
4	500

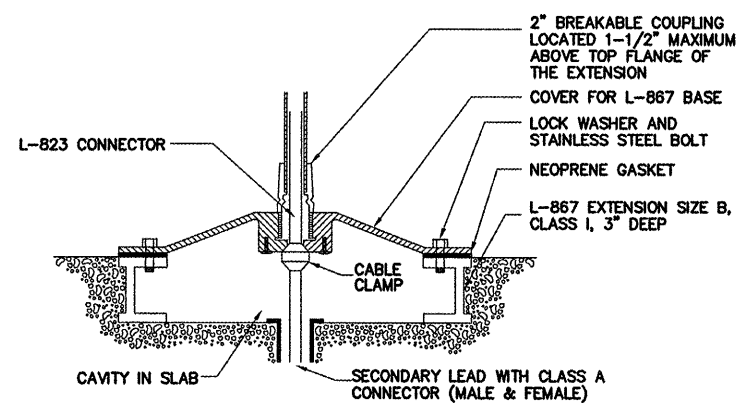
TRANSFORMERS SHALL BE 6.6/6.6 AMP.
* = OR AS REQUIRED BY SIGN MANUFACTURER.



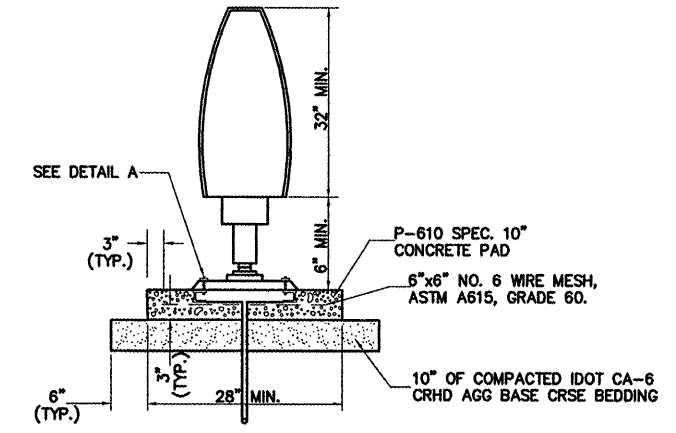
NEW OR REPLACEMENT
IN-TURF CONCRETE
CABLE AND DUCT MARKERS
(NOT TO SCALE)

NOTES:

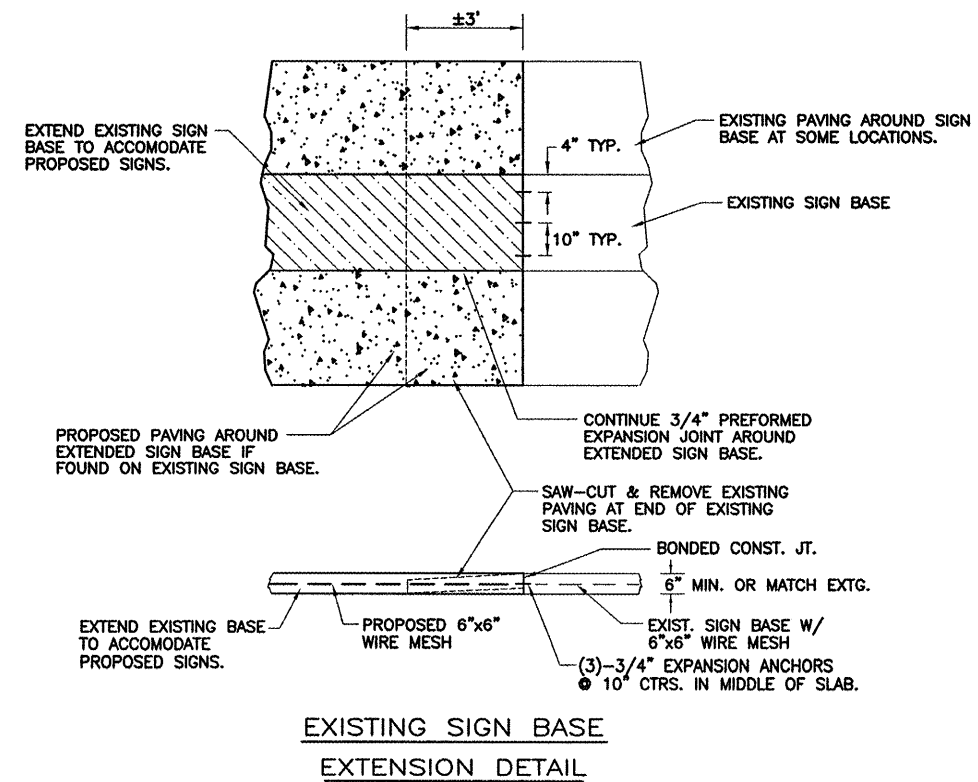
- NEW MARKERS ARE REQUIRED ON ALL FAA CABLES. CABLE MARKERS SHALL BE INSTALLED BY THE CONTRACTOR AT ALL LOCATIONS SELECTED BY THE RESIDENT ENGINEER AND / OR THE FAA. THE CONTRACTOR SHALL BE REQUIRED TO ADJUST THE ELEVATION OF EXISTING MARKERS AND / OR REPLACE EXISTING MARKERS DAMAGED DURING CONSTRUCTION.
- COST OF CONCRETE MARKERS IS INCIDENTAL TO THE ASSOCIATED ITEMS OF DUCT OR CABLE.
- EDGE EXPOSED CONCRETE WITH A 1/4" RADIUS TOOL.
- WHERE ADDITIONAL SPACE TO FIT THE LEGEND IS REQUIRED, SOME OF THE FOLLOWING METHODS SHALL BE EMPLOYED.
 - REDUCE LETTER SIZE TO 3" HIGH, 2" WIDE.
 - INCREASE THE MARKER SIZE TO 30" X 30" MAX.
 - PROVIDE ADDITIONAL MARKERS PLACED SIDE BY SIDE.



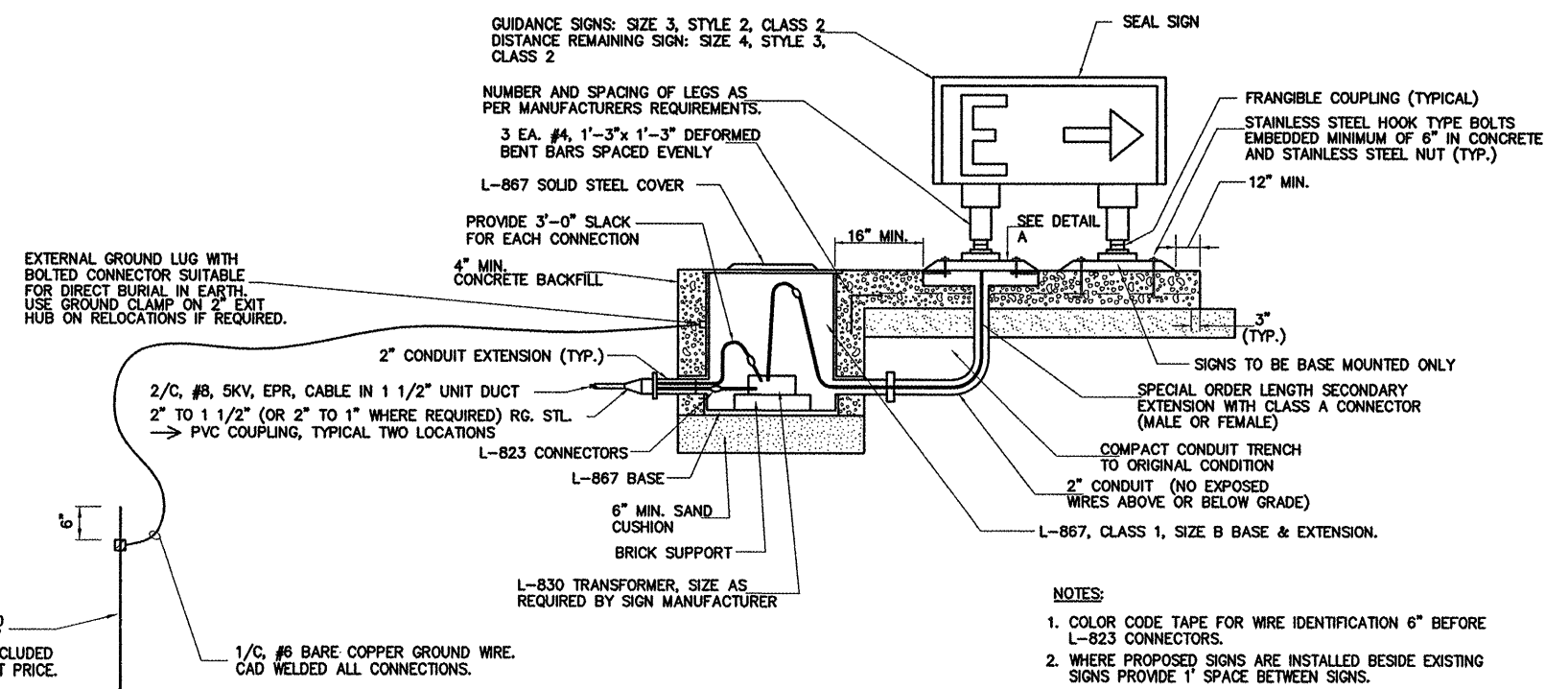
DETAIL A



SIDE VIEW



EXISTING SIGN BASE
EXTENSION DETAIL



FRONT VIEW

NOTES:

- COLOR CODE TAPE FOR WIRE IDENTIFICATION 6" BEFORE L-823 CONNECTORS.
- WHERE PROPOSED SIGNS ARE INSTALLED BESIDE EXISTING SIGNS PROVIDE 1' SPACE BETWEEN SIGNS.
- SUPPLY & INSTALL NEW GROUNDING ROD WITH EACH RELOCATION PER THIS DETAIL. INCLUDE GROUNDING ROD & WIRE COSTS IN RELOCATION UNIT PRICE.

5/8" DIA. X 8' GROUND ROD
COPPERWELD OR EQUAL, 12"
MIN. COVER, COST TO BE INCLUDED
IN CAN OR RELOCATION UNIT PRICE.

1/2" #6 BARE COPPER GROUND WIRE.
CAD WELDED ALL CONNECTIONS.