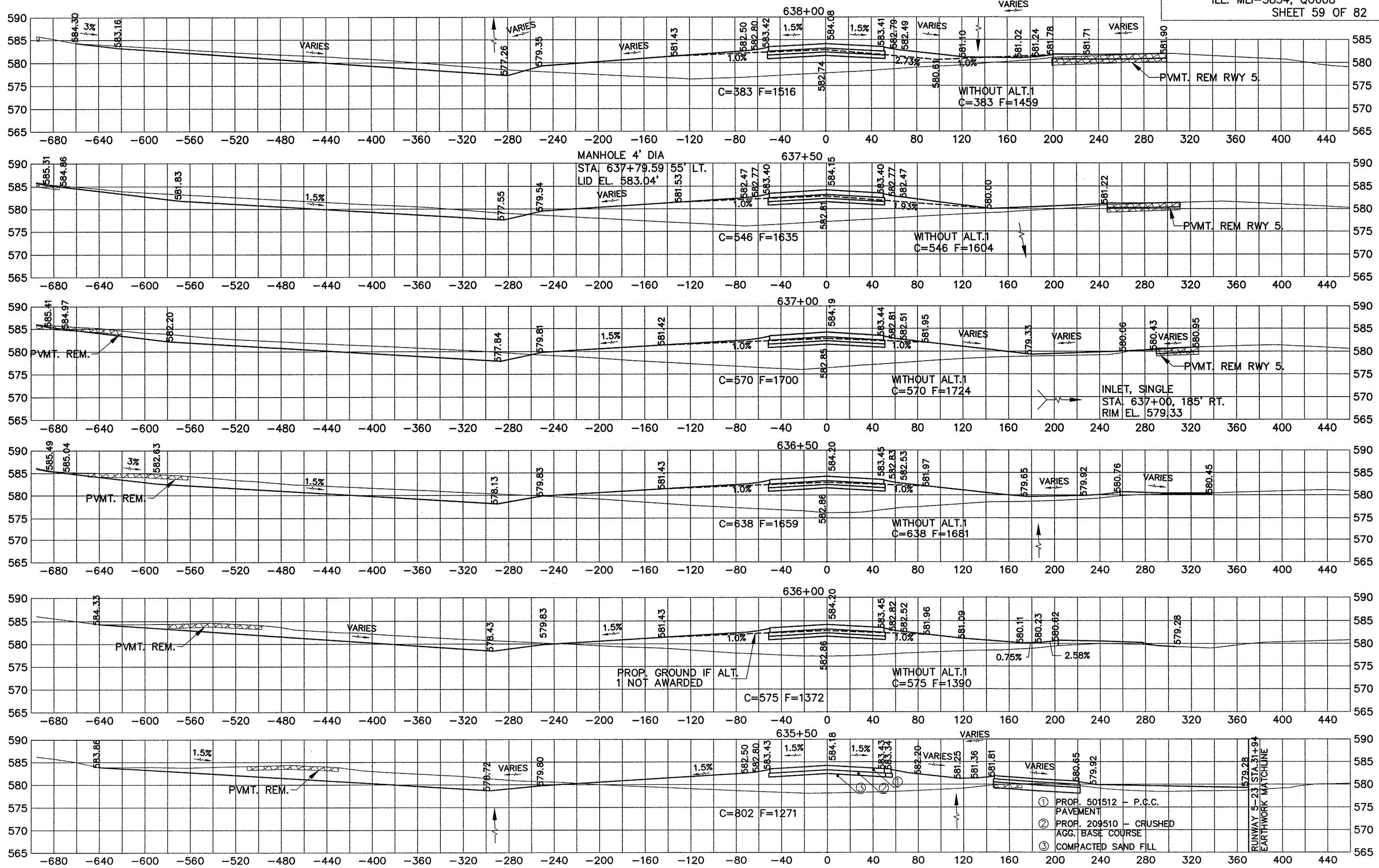


QUAD CITY INTERNATIONAL AIRPORT
TAXIWAY P, PHASE II - MIDDLE PAVING
ILL. MLI-3854, QU008
SHEET 59 OF 82



TAXIWAY P (WITH ADDITIVE ALTERNATES), STA 635+50 TO STA 638+00

G:\airport\A08T032 TP MID PVMT\SECTIONS P MID PVMT.dwg, 4/1/2009 8:36:01 AM, jefm