

RANTOUL NATIONAL AVIATION CENTER - FRANK ELLIOTT FIELD

REPAIR RUNWAYS INTERSECTION

RANTOUL, ILLINOIS

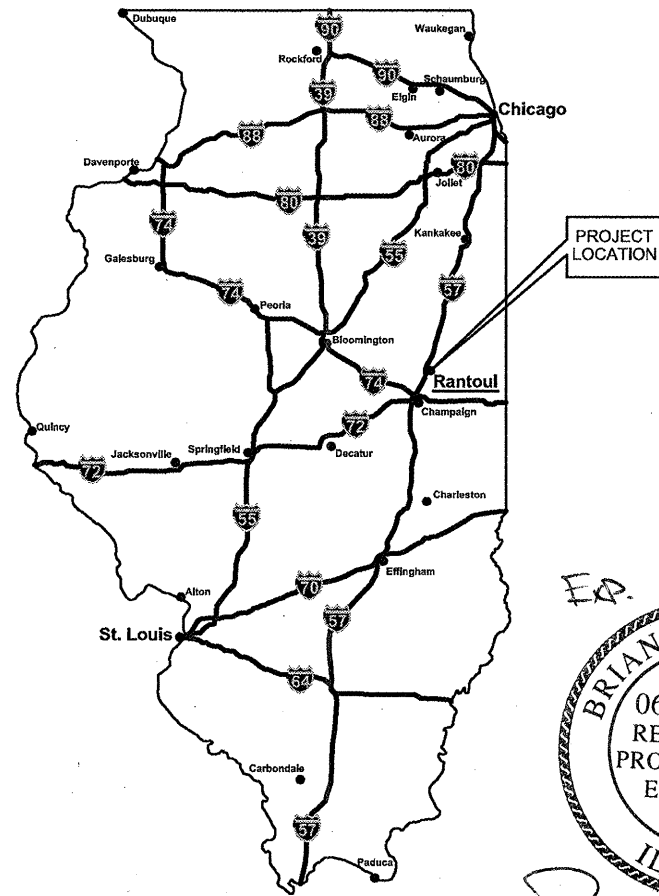
AIP PROJECT 3-17-0136-B12

IL PROJECT TIP-3806

Contract Drawings

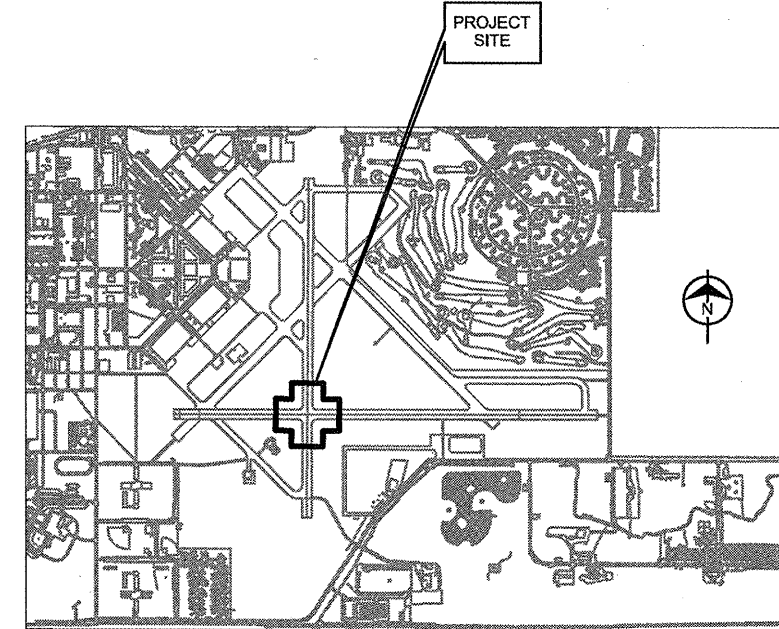
MARCH 2009

PROJECT NO. 49089



LOCATION MAP

EA. 11/30/2009
BRIAN J QUINLAN
062-056758
REGISTERED
PROFESSIONAL
ENGINEER
OF
ILLINOIS
[Signature]
3/05/2009



SITE MAP

no.	date	by	ckd	description	DESIGN APPROACH CATEGORY: B
0	03/05/09	REL	BJQ	ISSUED FOR BID	DESIGN GROUP: II



COVER

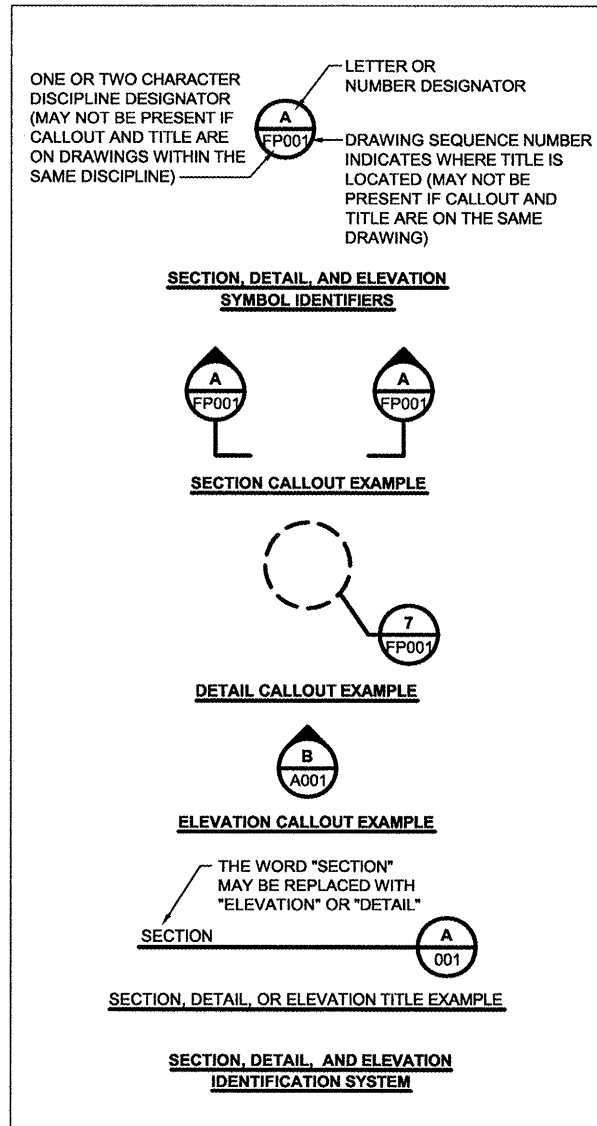
Rantoul National Aviation Center - Frank Elliott Field

RA013

no.	date	by	ckd	description
0	03/05/09	REL	BJQ	ISSUED FOR BID

LEGEND

EXISTING	NEW	
		RUNWAY EDGE LIGHT, STAKE MOUNTED
		ADJUST RUNWAY EDGE LIGHT, STAKE MOUNTED
		TRANSFORMER BASE CAN
		CABLE IN UNIT DUCT
		SANITARY SEWER FORCE MAIN (SSFM)
		STORM SEWER (ST)
		ELECTRICAL CONDUIT
		STORM SEWER MANHOLE / INLET
		TEMPORARY BENCHMARK
		DRAINAGE INLET
		VARIABLE DEPTH BITUMINOUS PAVEMENT MILLING
		PAVEMENT MARKING REMOVAL
		SHOULDER PREPARATION / BUTT JOINT CONSTRUCTION
		BITUMINOUS SURFACE COURSE
		5/8" POROUS FRICTION COURSE OVERLAY



ABBREVIATIONS

AOA	AIR OPERATIONS AREA
AWOS	AUTOMATED WEATHER OBSERVATION SYSTEM
BM	BENCHMARK
BVCE	BEGIN VERTICAL CURVE ELEVATION
BVCS	BEGIN VERTICAL CURVE STATION
CL	CENTERLINE
CLSM	CONTROLLED LOW STRENGTH MATERIAL
CM	CABLE MARKER
CY	CUBIC YARD
DM	DUCT MARKER
E	EAST
EA	EACH
EG	EXISTING GROUND
ELEV	ELEVATION
EVCE	END VERTICAL CURVE ELEVATION
EVCS	END VERTICAL CURVE STATION
FAA	FEDERAL AVIATION ADMINISTRATION
FG	FINISHED GRADE
FOD	FOREIGN OBJECT DEBRIS
FT	FEET
GAL	GALLON
GND	GROUND
GRSC	GALVANIZED RIGID STEEL CONDUIT
HORZ	HORIZONTAL
IDA	ILLINOIS DIVISION OF AERONAUTICS
IDOT	ILLINOIS DEPARTMENT OF TRANSPORTATION
INV	INVERT
LF	LINEAR FOOT
LS	SUMP SUM
LT	LEFT
MAX	MAXIMUM
MIN	MINIMUM
N	NORTH
NE	NORTHEAST
NO.	NUMBER
NW	NORTHWEST
NTS	NOT TO SCALE
OC	ON-CENTER
PAPI	PRECISION APPROACH PATH INDICATOR
PC	POINT OF CURVATURE
PT	POINT OF TANGENCY
PVC	POLYVINYL CHLORIDE
PVI	POINT OF VERTICAL INTERSECTION
R	RADIUS
RT	RIGHT
RW	RUNWAY
S	SOUTH
SCH	SCHEDULE
SSFM	SANITARY SEWER FORCE MAIN
ST	STORM SEWER
STA	STATION
SW	SOUTHWEST
SY	SQUARE YARD
TBM	TEMPORARY BENCHMARK
TW	TAXWAY
TYP	TYPICAL
UG	UNDERGROUND
UON	UNLESS OTHERWISE NOTED
VERT	VERTICAL
W	WEST

SUMMARY OF QUANTITIES

ITEM NO.	BID ITEM NO.	DESCRIPTION OF WORK	UNITS	ESTIMATED QUANTITY
1	AR150510	ENGINEER'S FIELD OFFICE	L.S.	1
2	AR150520	MOBILIZATION	L.S.	1
3	AR201661	CLEAN & SEAL BITUMINOUS CRACKS	L.F.	1,000
4	AR401610	BITUMINOUS SURFACE COURSE	TON	1,183
5	AR401620	BITUMINOUS SURFACE COURSE, LEVELING	TON	760
6	AR401650	BITUMINOUS PAVEMENT MILLING	S.Y.	8,532
7	AR401655	BUTT JOINT CONSTRUCTION	S.Y.	2,576
8	AR402620	POROUS FRICTION COURSE 5/8"	S.Y.	4,584
9	AR602510	BITUMINOUS PRIME COAT	GAL.	3,350
10	AR603510	BITUMINOUS TACK COAT	GAL.	1,600
11	AR620520	PAVEMENT MARKING-WATERBORNE	S.F.	14,700
12	AR620900	PAVEMENT MARKING REMOVAL	S.F.	2,100
13	AR751900	REMOVE INLET	EACH	4
14	AR803070	REMOVE AND REINSTALL MRL, STAKE MOUNTED	EACH	8

INDEX OF DRAWINGS

SHEET NO.	DRAWING NO.	DRAWING TITLE
1 of 19	CVR	COVER SHEET
2 of 19	G001	INDEX OF DRAWINGS, SUMMARY OF QUANTITIES, LEGEND AND ABBREVIATIONS
3 of 19	G002	ACCESS AND SAFETY PLAN AND DETAILS
4 of 19	G003	ACCESS AND SAFETY NOTES AND GENERAL NOTES
5 of 19	C101	DEMOLITION PLAN
6 of 19	C201	SITE GEOMETRY PLAN
7 of 19	C301	PLAN AND PROFILE RUNWAY 18/36
8 of 19	C302	PLAN AND PROFILE RUNWAY 9/27
9 of 19	C401	GRADING PLAN
10 of 19	C501	PAVEMENT MARKING PLAN AND DETAILS
11 of 19	C601	TYPICAL SECTIONS AND CONSTRUCTION DETAILS
12 of 19	X101	CROSS SECTIONS RUNWAY 18/36
13 of 19	X102	CROSS SECTIONS RUNWAY 18/36
14 of 19	X103	CROSS SECTIONS RUNWAY 18/36
15 of 19	X104	CROSS SECTIONS RUNWAY 18/36
16 of 19	X105	CROSS SECTIONS RUNWAY 9/27
17 of 19	X106	CROSS SECTIONS RUNWAY 9/27
18 of 19	X107	CROSS SECTIONS RUNWAY 9/27
19 of 19	X108	CROSS SECTIONS RUNWAY 9/27



date	06/11/2008	detailed	R. LEE
designed	R. LEE	checked	B. QUINLAN



RANTOUL NATIONAL AVIATION CENTER
INDEX OF DRAWINGS, SUMMARY OF QUANTITIES, LEGEND AND ABBREVIATIONS

project	49089	contract	CONTRACT
---------	-------	----------	----------

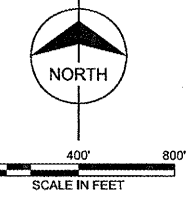
drawing	G001	rev.	0
---------	-------------	------	----------

sheet	2	of	19	sheets
file	49089G001.DWG			

- LEGEND**
- AOA — AIR OPERATIONS AREA
 - ↔ CONTRACTOR ACCESS ROUTE
 - ⋯ LOW PROFILE BARRICADES
 - ▨ LIMITS OF CONSTRUCTION

RA013

no.	date	by	ckd	description
0	03/05/09	REL	BJQ	ISSUED FOR BID



SAFETY & PHASING NARRATIVE

PHASE 1 - RW 9/27 AND 18/36 CLOSED (DAY AND NIGHT)

DURATION:
- 53 CALENDAR DAYS

MAJOR WORK ITEMS:

- REMOVE INLETS AND RESTORE SITE
- PAVEMENT MARKING REMOVAL
- BITUMINOUS PAVEMENT MILLING
- CRACK AND JOINT SEALING
- HMA SURFACE PAVING
- POROUS FRICTION COURSE PAVING
- REMOVE INLETS
- ADJUST STAKE MOUNTED LIGHTS
- PAVEMENT MARKING

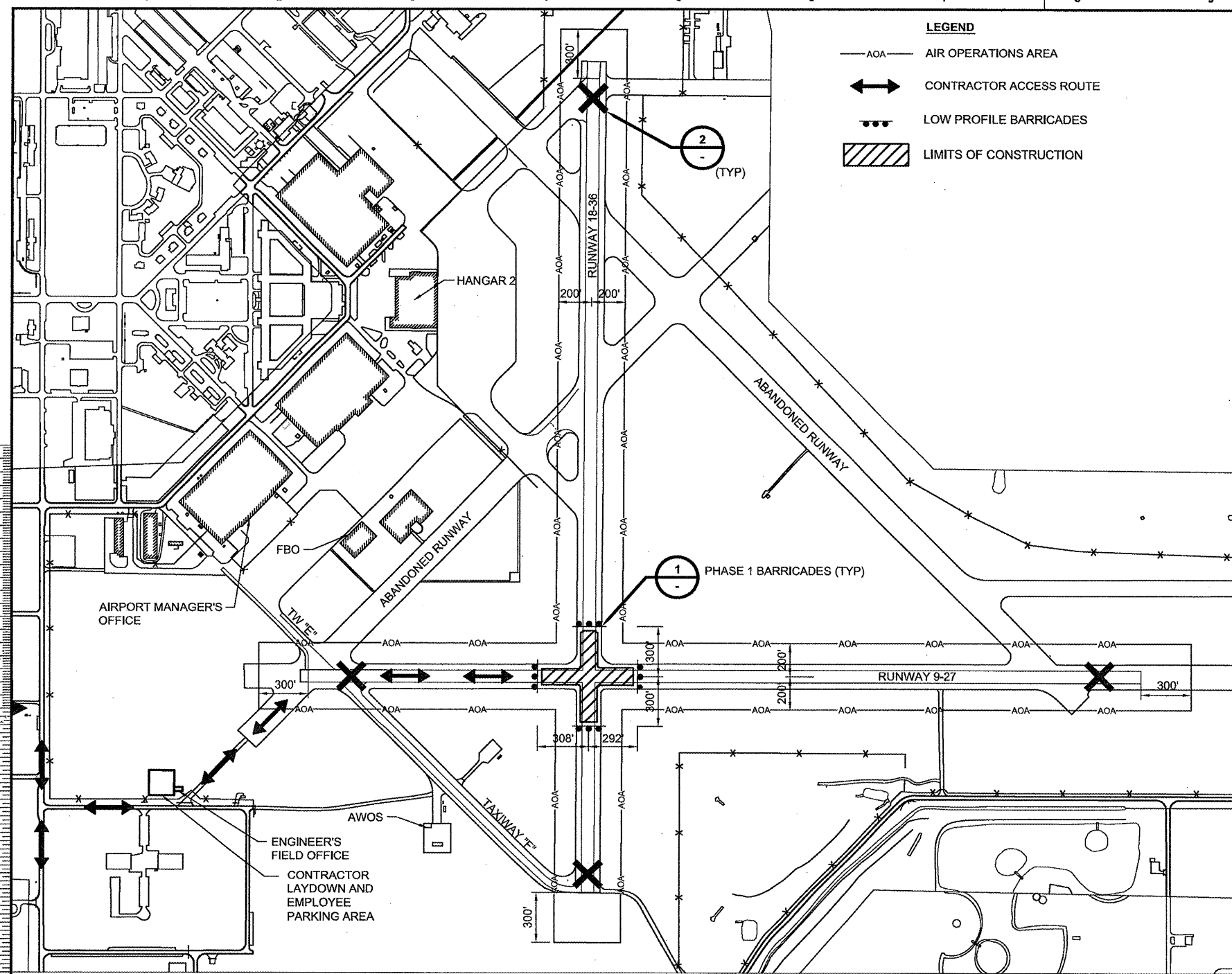
SAFETY REQUIREMENTS:

- PLACE AND MAINTAIN BARRICADES
- PLACE AND MAINTAIN RUNWAY 9/27 AND RUNWAY 18/36 CLOSURE X'S
- REMOVE BARRICADES
- REMOVE RUNWAY CLOSURE X'S

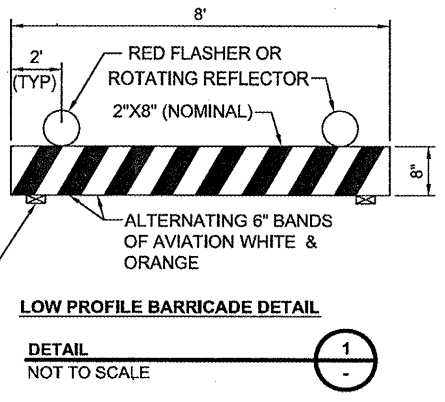
GENERAL SAFETY REQUIREMENTS:
- REFER TO ACCESS AND SAFETY NOTES ON DRAWING G003

ANTICIPATED PROJECT SCHEDULE

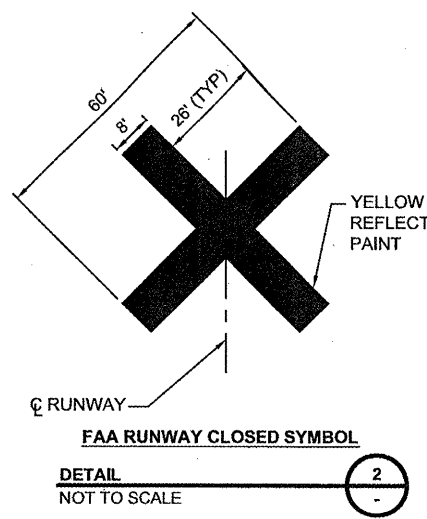
CONSTRUCTION START DATE: JUNE 1, 2009
CONSTRUCTION COMPLETION DATE: JULY 24, 2009



Scale For Microfilming
Millimeters
Inches



- NOTES:**
1. FLASHERS SHALL BE BATTERY OPERATED. LENS SHALL BE RED AND BE ABLE TO ROTATE 90°.
 2. SUPPORT BRACES SHALL BE SECURELY ATTACHED TO 2"x8".
 3. SAND BAGS SHALL BE PLACED ON EACH SUPPORT BRACE.
 4. FACING OF 8"x8" TO BE COVERED WITH REFLECTIVE TAPE OR PAINT.
 5. LOW-PROFILE BARRICADES TO BE SPACED 8' OC ACROSS THE FULL WIDTH OF PAVEMENT.
 6. BARRICADES SHALL BE BRACED TO PREVENT TIP OVER OR DISPLACEMENT AS MAY BE INDUCED BY WEATHER OR AIRCRAFT OPERATIONS.
 7. BARRICADES CONSTRUCTED OF HIGH IMPACT, UV-RESISTANT POLYETHYLENE AS MANUFACTURED BY NEUBERT AERO CORP. OR SIMILAR APPROVED EQUAL MAY ALSO BE USED.



NOTE:
CLOSED RUNWAY CROSS TO BE CONSTRUCTED OF PLYWOOD, DOUBLE-LAYERED PAINTED SNOW FENCE, COLORED PLASTIC, OR SIMILAR MATERIAL APPROVED BY ENGINEER. CROSS SHALL BE CONSTRUCTED FOR TEMPORARY USE AND EASY REMOVAL, AND NOT SUBJECT TO MOVEMENT BY WIND. ANCHOR WITH SAND BAGS AS REQUIRED. CROSS SHALL BE PLACED OVER RUNWAY NUMERALS.

THRESHOLD LOCATION TABLE			
RUNWAY THRESHOLD	LATITUDE	LONGITUDE	ELEVATION
9	40° 17' 31.11841"	88° 08' 59.62096"	735.52
27	40° 17' 31.47419"	88° 07' 55.09473"	728.47
36	40° 17' 18.94840"	88° 08' 37.87045"	733.43
18	40° 18' 07.31820"	88° 08' 37.90095"	736.88



date	06/11/2008	detailed	R. LEE
designed	R. LEE	checked	B. QUINLAN



RANTOUL NATIONAL AVIATION CENTER
ACCESS AND SAFETY PLAN
AND DETAILS

project	49089	contract	CONTRACT
drawing	G002	rev.	0
sheet	3	of	19 sheets
file	49089G002.DWG		

COPYRIGHT © 2008 BURNS & MCDONNELL ENGINEERING COMPANY, INC.

ACCESS AND SAFETY NOTES:

RA013

no.	date	by	ckd	description
0	03/05/09	REL	BJQ	ISSUED FOR BID

I. ACCESS AND VEHICLE PARKING:

- A. ACCESS POINT AND HAUL ROUTE FOR ALL CONTRACTOR PERSONNEL, VEHICLES AND EQUIPMENT ARE AS SHOWN ON THE CONSTRUCTION SAFETY PHASING PLAN. IT SHALL BE THE CONTRACTOR'S RESPONSIBILITY TO OBTAIN PERMITS AND COORDINATE OFF SITE HAUL ROUTES WITH THE APPROPRIATE OWNER WHO HAS JURISDICTION OVER THE AFFECTED ROUTE. ON-SITE HAUL ROUTES SHALL BE MAINTAINED BY THE CONTRACTOR AND SHALL BE RESTORED TO THEIR ORIGINAL CONDITION UPON COMPLETION OF BEING USED AS A HAUL ROUTE. HAUL ROUTES ARE TO REMAIN CLEAN AT ALL TIMES.
- B. CONTRACTOR SHALL PROVIDE AND INSTALL A PROFESSIONALLY PAINTED SIGN MEETING AIRPORT MANAGER APPROVAL AT THE CONSTRUCTION ENTRANCE TO DIRECT MATERIAL SUPPLIERS AND EMPLOYEES TO THE CONSTRUCTION SITE. THE SIGN SHALL READ "CONSTRUCTION VEHICLES ONLY - NO VENDORS ALLOWED".
- C. ALL CONTRACTOR VEHICLES AND PERSONNEL SHALL REMAIN WITHIN THE DESIGNATED CONSTRUCTION LIMITS OR HAUL ROUTES. NO CONTRACTOR VEHICLES WILL BE ALLOWED ON OTHER AIRFIELD OPERATIONS AREAS.
- D. THE LIMITS OF CONSTRUCTION, MATERIAL STORAGE AREAS, EQUIPMENT STORAGE AREA, PARKING AREA AND OTHER AREAS DEFINED AS REQUIRED FOR THE CONTRACTOR'S EXCLUSIVE USE DURING CONSTRUCTION SHALL BE MARKED BY THE CONTRACTOR. TEMPORARY BARRICADES, FLAGGING AND FLASHING WARNING LIGHTS WILL BE REQUIRED AT CRITICAL ACCESS POINTS. TYPE OF MARKING AND WARNING DEVICES SHALL BE APPROVED BY THE ENGINEER AND AIRPORT MANAGER.
- E. ALL ACCESS GATES SHALL BE KEPT CLOSED DURING CONTRACTOR'S WORK HOURS. THE CONTRACTOR SHALL CLOSE AND LOCK ACCESS GATE AT THE COMPLETION OF EACH WORK DAY. AIRPORT MANAGER WILL PROVIDE LOCK AND KEYS FOR ACCESS GATE.

II. COORDINATION AND COMMUNICATION DURING CONSTRUCTION:

- A. CONTRACTOR SHALL ADVISE AND THEN VERIFY WITH RESIDENT ENGINEER 72 HOURS IN ADVANCE AS TO THE NEED FOR NOTICES TO AIRMEN (NOTAMS). NO RUNWAY, TAXIWAY OR APRON SHALL BE CLOSED WITHOUT APPROVAL FROM THE RESIDENT ENGINEER.
- B. CONTRACTOR SHALL APPOINT A CONSTRUCTION SUPERINTENDENT, SUBJECT TO THE APPROVAL OF THE AIRPORT MANAGER, WHO SHALL BE PRESENT ON THE CONSTRUCTION SITE AT ALL TIMES DURING WORKING HOURS WHILE JOB IS IN PROGRESS. THE SUPERINTENDENT SHALL BE DESIGNATED THE RESPONSIBLE CONTRACTOR'S REPRESENTATIVE WHO SHALL BE AVAILABLE ON A 24-HOUR BASIS.
- C. PRIOR TO CONSTRUCTION, THE CONTRACTOR SHALL CORDON OFF THE WORK AREA AS SHOWN ON DRAWING G002 BY USING BARRICADES WITH ALTERNATE ORANGE AND WHITE MARKINGS. THE BARRICADES SHALL ALSO BE FITTED WITH FLASHING RED LIGHTS. CONTRACTOR SHALL MAINTAIN, MOVE AND REMOVE BARRICADES (AS DIRECTED) TO DELINEATE AREAS CLOSED TO AIRCRAFT TRAFFIC.
- D. PRIOR TO COMMENCEMENT OF CONSTRUCTION, CONTRACTOR SHALL SUBMIT TO AIRPORT MANAGER THE NAME AND TELEPHONE NUMBER OF THE INDIVIDUAL(S) WHO WILL BE ON CALL 24 HOURS PER DAY FOR EMERGENCY MAINTENANCE OF AIRPORT HAZARD LIGHTING & BARRICADES.
- E. CONTRACTOR SHALL FURNISH AN AIRPORT RADIO AND CONTINUOUSLY MONITOR AIRCRAFT TRAFFIC ON AND AROUND THE AIRPORT. THE FREQUENCY FOR LOCAL TRAFFIC IS 123.0 MHz.
- F. THE FOLLOWING CONTACT INFORMATION IS PROVIDED FOR CONTRACTOR'S USE IN CASE OF EMERGENCY:

EMERGENCY
911

RANTOUL MUNICIPAL BUILDING
(217) 893-1661

RANTOUL NATIONAL AVIATION CENTER
AIRPORT MANAGER, BILL CLAYTON
(217) 893-4291, (217) 841-3787

RANTOUL PUBLIC WORKS DEPARTMENT
(ELECTRIC, GAS, WATER & SEWER)
GREG HAZEL
(217) 892-2178

VERIZON COMMUNICATIONS
JOE BIRCH
(217) 892-3338, (217) 493-7786

OTHER CONTACTS AS DIRECTED AT
PRE-CONSTRUCTION MEETING

- G. PRIOR TO THE COMPLETION OF EACH WORK DAY, ALL AIRFIELD PAVEMENT SURFACES WITHIN AND ADJACENT TO THE WORK AREA AND THOSE USED AS HAUL ROUTES SHALL BE SWEEP CLEAN.
- H. PRIOR TO THE OPENING OF A CLOSED RUNWAY OR TAXIWAY, THE CONTRACTOR SHALL REQUEST THE ENGINEER TO SCHEDULE AN INSPECTION. NO TAXIWAY OR RUNWAY SHALL BE RE-OPENED UNTIL ENGINEER HAS COMPLETED INSPECTION AND APPROVED THE RE-OPENING OF ACTIVE AREAS.
- I. THERE WILL BE OTHER CONSTRUCTION WORK OCCURRING SIMULTANEOUSLY WITH THIS PROJECT. CONTRACTOR SHALL COORDINATE HIS CONSTRUCTION ACTIVITIES WITH ALL OTHER CONTRACTORS WORKING ON THE AIRPORT. ANY SCHEDULE DELAYS OR DAMAGE TO EQUIPMENT OR MATERIALS INSTALLED AS PART OF THIS PROJECT INCURRED AS A RESULT OF OTHER CONTRACTOR'S ACTIVITIES SHALL BE REMEDIATED AT NO COST TO THE OWNER.

III. TRAFFIC CONTROL:

- A. ALL CONSTRUCTION EQUIPMENT AND VEHICLES SHALL BE MARKED WITH COMPANY PAINT DESIGNS, INSIGNIAS OR OTHER COMPANY MARKINGS, WHICH ARE CLEARLY VISIBLE. CONTRACTOR SHALL PROVIDE EACH VEHICLE WITH A FLAG ON A STAFF ATTACHED TO THE VEHICLE SO THAT THE FLAG WILL BE READILY VISIBLE. THE FLAG SHOULD BE AT LEAST 3 FOOT SQUARE, AND HAVE A CHECKERED PATTERN OF INTERNATIONAL ORANGE AND WHITE.
- B. CONSTRUCTION EQUIPMENT SHALL HAVE AUTOMATIC SIGNALING DEVICES TO SOUND AN ALARM WHEN MOVING IN REVERSE.
- C. ONLY RUBBER TIERED VEHICLES WILL BE ALLOWED ON PAVEMENT.
- D. NO PEDESTRIAN TRAFFIC OUTSIDE THE CONSTRUCTION WORK SITE WILL BE PERMITTED.
- E. ANY DAMAGE TO AIRPORT ROADS, AIRFIELD PAVEMENT, OR TURF AREAS DUE TO CONSTRUCTION EQUIPMENT OR CONSTRUCTION TRAFFIC SHALL BE REPAIRED TO ORIGINAL CONDITION TO THE SATISFACTION OF AND AT NO EXPENSE TO THE OWNER.
- F. ANY WORKERS AND/OR EQUIPMENT NOT IN COMPLIANCE WITH SAFETY PLAN SHALL IMMEDIATELY BE REMOVED FROM THE WORK AREA AND THEY WILL NOT BE PERMITTED TO WORK ON THE SITE THROUGHOUT THE REMAINDER OF THE PROJECT.

IV. EQUIPMENT AND STOCKPILE HEIGHT:

- A. THE ALLOWABLE HEIGHT OF CONSTRUCTION EQUIPMENT OPERATING IN THE AOA MUST NOT PENETRATE THE OFZ OF ANY ACTIVE RUNWAY AS DEFINED IN FAA AC 150/5300-13, CURRENT VERSION.
- B. CONTRACTOR SHALL NOT STOCKPILE CONSTRUCTION MATERIALS, SPOILS, DEBRIS OR REFUSE IN ANY AREA WHERE SUCH STOCKPILES WOULD PENETRATE APPROACH SURFACES. STOCKPILING OF MATERIAL WITHIN THE SAFETY AREA OF AN ACTIVE RUNWAY OR TAXIWAY IS PROHIBITED.
- C. ALL STOCKPILES ADJACENT TO ACTIVE RUNWAY SAFETY AREAS OR OBSTACLE FREE ZONES SHALL BE IDENTIFIED WITH A 360 DEGREE RED OBSTRUCTION LIGHT PLACED AT THE HIGHEST POINT OF THE STOCKPILE.
- D. STOCKPILED MATERIAL SHALL BE CONTAINED IN A MANNER TO PREVENT MOVEMENT RESULTING FROM AIRCRAFT PROP WASH OR WIND CONDITIONS. IN ADDITION, STOCKPILED MATERIAL SHALL HAVE SILT FENCE PLACED AROUND IT TO PREVENT FOD FROM MOVING ONTO THE AIRFIELD PAVEMENTS OR POLLUTING WATERCOURSES.

V. EXCAVATION AND TRENCHES:

- A. OPEN TRENCHES AND EXCAVATIONS AT THE CONSTRUCTION SITE SHALL BE PROMINENTLY MARKED WITH ORANGE BARRICADES WITH FLASHING RED LIGHTS ACCEPTABLE TO THE AIRPORT MANAGER.
- B. ALL CONSTRUCTION AREAS THAT POSE A HAZARD TO OPERATING AIRCRAFT SHALL BE PROPERLY MARKED WITH LOW-PROFILE BARRICADES.
- C. ALL BARRICADES LOCATED WITHIN OR ADJACENT TO AREAS OF AIRCRAFT OPERATION SHALL BE LOW PROFILE TYPE WITH ORANGE MARKINGS AND RED FLASHING LIGHTS.
- D. LOW PROFILE BARRICADES SHALL BE KEPT OUTSIDE THE LIMITS OF ANY ACTIVE RUNWAY SAFETY AREA OR TAXIWAY SAFETY AREA.

VI. OTHER SAFETY REQUIREMENTS:

- A. CONTRACTOR SHALL MAINTAIN SAFETY PRACTICES THAT CONFORM TO OCCUPATIONAL SAFETY AND HEALTH ADMINISTRATION (OSHA) REGULATIONS.
- B. DEBRIS - WASTE AND LOOSE MATERIALS CAPABLE OF CAUSING DAMAGE TO AIRCRAFT AND HELICOPTER LANDING GEAR, PROPELLERS AND ROTORS SHALL NOT BE LEFT WITHIN ACTIVE AIRCRAFT MOVEMENT AREAS. MATERIAL DROPPED WITHIN THESE AREAS SHALL BE REMOVED IMMEDIATELY.
- C. THE CONTRACTOR SHALL CONTROL BLOWING DUST FROM ANY HAUL ROUTE OR WORK AREA REGARDLESS OF SOURCE.

VII. CONTRACTOR SAFETY PLAN SUBMITTALS:

- A. CONTRACTOR SHALL FURNISH DETAILED INFORMATION REGARDING COMPLIANCE WITH THE PROJECT SAFETY PLAN IN CONJUNCTION WITH HIS/HER PROJECT SCHEDULE. CONTRACTOR SHALL PROVIDE SAFETY PLAN 7 DAYS PRIOR TO THE PRE-CONSTRUCTION MEETING. INFORMATION SHALL INCLUDE BUT NOT BE LIMITED TO THE FOLLOWING ITEMS:
 1. PROPOSED ACCESS POINTS, STAGING AREA AND HAUL ROUTES.
 2. ANY TEMPORARY MARKINGS TO BE USED.
 3. THE LOCATION AND TYPE OF BARRICADES OR OTHER TRAFFIC CONTROL DEVICES.
 4. AREAS TO WHICH CONSTRUCTION OPERATIONS WILL BE LIMITED, ALONG WITH PROPOSED MEASURES TO MINIMIZE THE POSSIBILITY OF CONTRACTOR EQUIPMENT AND/OR WORKERS ACCIDENTALLY ENTERING ANY AOA.
 5. ANY REQUESTED TEMPORARY AMENDMENTS TO THE AIRPORT SECURITY PLAN FOR SPECIAL CONDITION OR MODIFICATIONS.
- B. CONTRACTOR SAFETY PLAN SHALL COMPLY WITH ALL REQUIREMENTS INDICATED IN FAA ADVISORY CIRCULAR (AC) 150/5370-2E, OPERATIONAL SAFETY ON AIRPORTS DURING CONSTRUCTION, CURRENT EDITION.

GENERAL NOTES:

1. IT IS THE RESPONSIBILITY OF THE CONTRACTOR TO OBTAIN AND PAY FOR ALL APPLICABLE PERMITS, FEES AND LICENSES FOR CONSTRUCTION AND EQUIPMENT.
2. THE COST OF TRAFFIC CONTROL IS INCIDENTAL TO THE PROJECT.
3. THE CONTRACTOR SHALL BE RESPONSIBLE FOR MAINTAINING CONSTANT COORDINATION BETWEEN THE SUBCONTRACTORS AND THE ENGINEER. ALL CONSTRUCTION ACTIVITIES PLANNED BY THE CONTRACTOR SHALL BE REVIEWED AND APPROVED BY THE ENGINEER AND OWNER.
4. LIMITS OF WORK SHALL BE VERIFIED IN THE FIELD BY THE CONTRACTOR AND APPROVED BY THE ENGINEER PRIOR TO BEGINNING WORK.
5. THERE SHALL BE NO PERMANENT WASTE SITES ON AIRPORT PROPERTY. ANY TEMPORARY WASTE AREA WILL BE APPROVED BY THE ENGINEER AND SHALL BE KEPT IN A NEAT CONDITION. THE OWNER MAY DIRECT THE CONTRACTOR TO REMOVE WASTE IF NOT PROPERLY MAINTAINED.
6. PRIOR TO COMPLETION OF THE PROJECT THE CONTRACTOR SHALL RESTORE ALL DAMAGED AREAS (NOT DESIGNATED FOR CONSTRUCTION) TO THEIR PRE-CONSTRUCTION CONDITION.
7. LOCATING, FLAGGING, AND PROTECTING THE EXISTING UTILITIES DURING THE DURATION OF THE CONSTRUCTION PROJECT IS THE RESPONSIBILITY OF THE CONTRACTOR. THE LOCATIONS OF THE EXISTING UTILITIES ON THE CONTRACT DRAWINGS WERE OBTAINED FROM EXISTING RECORDS AND NO GUARANTEE OF ACCURACY OR SUFFICIENCY FOR THIS INFORMATION IS ASSUMED BY THE OWNER OR ENGINEER. ANY DAMAGE TO ANY EXISTING UTILITIES WILL BE REPAIRED OR REPLACED TO THE SATISFACTION OF AND AT NO EXPENSE TO THE OWNER.
8. THE CONSTRUCTION COVERED BY THE PLANS SHALL CONFORM TO ALL APPLICABLE STANDARDS AND SPECIFICATIONS OF THE FAA, IDOT AND IDA.
9. ALL WORKMANSHIP AND MATERIALS SHALL BE SUBJECT TO INSPECTION AND APPROVAL OF THE ENGINEER.



Know what's below.
Call before you dig.



date	06/11/2008	detailed	R. LEE
designed	R. LEE	checked	B. QUINLAN



RANTOUL NATIONAL AVIATION CENTER
ACCESS AND SAFETY NOTES
AND GENERAL NOTES

project	49089	contract	CONTRACT
drawing	G003	rev.	0
sheet	4 of 19	sheets	
file	_49089G003.DWG		

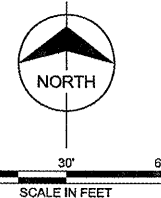
LEGEND

EXISTING

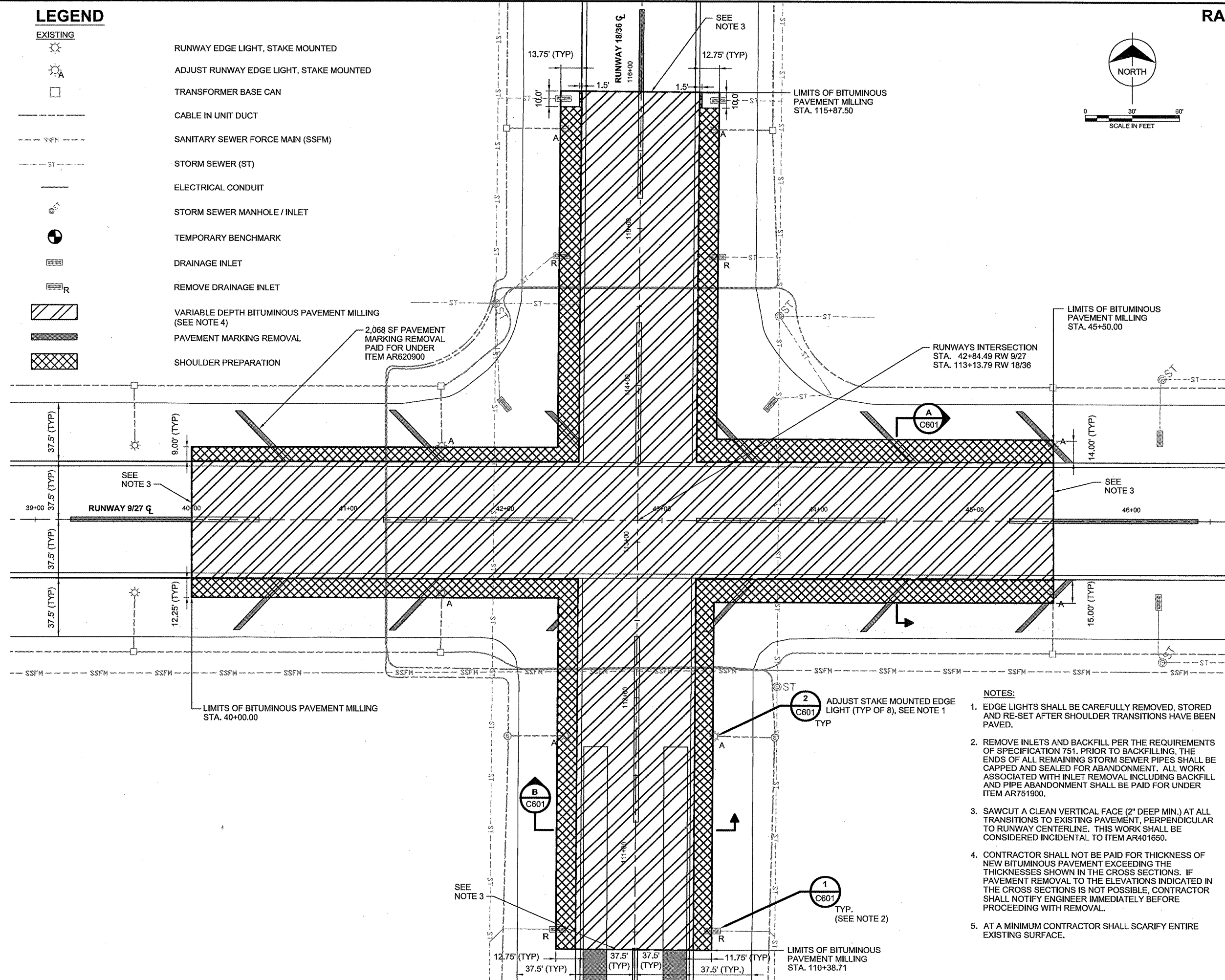
- RUNWAY EDGE LIGHT, STAKE MOUNTED
- ADJUST RUNWAY EDGE LIGHT, STAKE MOUNTED
- TRANSFORMER BASE CAN
- CABLE IN UNIT DUCT
- SANITARY SEWER FORCE MAIN (SSFM)
- STORM SEWER (ST)
- ELECTRICAL CONDUIT
- STORM SEWER MANHOLE / INLET
- TEMPORARY BENCHMARK
- DRAINAGE INLET
- REMOVE DRAINAGE INLET
- VARIABLE DEPTH BITUMINOUS PAVEMENT MILLING (SEE NOTE 4)
- PAVEMENT MARKING REMOVAL
- SHOULDER PREPARATION

RA013

no.	date	by	ckd	description
0	03/05/09	REL	BJQ	ISSUED FOR BID



Scale For Microfitting
Inches



NOTES:

1. EDGE LIGHTS SHALL BE CAREFULLY REMOVED, STORED AND RE-SET AFTER SHOULDER TRANSITIONS HAVE BEEN PAVED.
2. REMOVE INLETS AND BACKFILL PER THE REQUIREMENTS OF SPECIFICATION 751. PRIOR TO BACKFILLING, THE ENDS OF ALL REMAINING STORM SEWER PIPES SHALL BE CAPPED AND SEALED FOR ABANDONMENT. ALL WORK ASSOCIATED WITH INLET REMOVAL INCLUDING BACKFILL AND PIPE ABANDONMENT SHALL BE PAID FOR UNDER ITEM AR751900.
3. SAWCUT A CLEAN VERTICAL FACE (2" DEEP MIN.) AT ALL TRANSITIONS TO EXISTING PAVEMENT, PERPENDICULAR TO RUNWAY CENTERLINE. THIS WORK SHALL BE CONSIDERED INCIDENTAL TO ITEM AR401650.
4. CONTRACTOR SHALL NOT BE PAID FOR THICKNESS OF NEW BITUMINOUS PAVEMENT EXCEEDING THE THICKNESSES SHOWN IN THE CROSS SECTIONS. IF PAVEMENT REMOVAL TO THE ELEVATIONS INDICATED IN THE CROSS SECTIONS IS NOT POSSIBLE, CONTRACTOR SHALL NOTIFY ENGINEER IMMEDIATELY BEFORE PROCEEDING WITH REMOVAL.
5. AT A MINIMUM CONTRACTOR SHALL SCARIFY ENTIRE EXISTING SURFACE.

COPYRIGHT © 2008 BURNS & MCDONNELL ENGINEERING COMPANY, INC.



date 06/11/2008	detailed R. LEE
designed R. LEE	checked B. QUINLAN



**RANTOUL NATIONAL AVIATION CENTER
DEMOLITION PLAN**

project 49089	contract CONTRACT
drawing C101 - 0	
sheet 5 of 19 sheets	file 49089C101.DWG

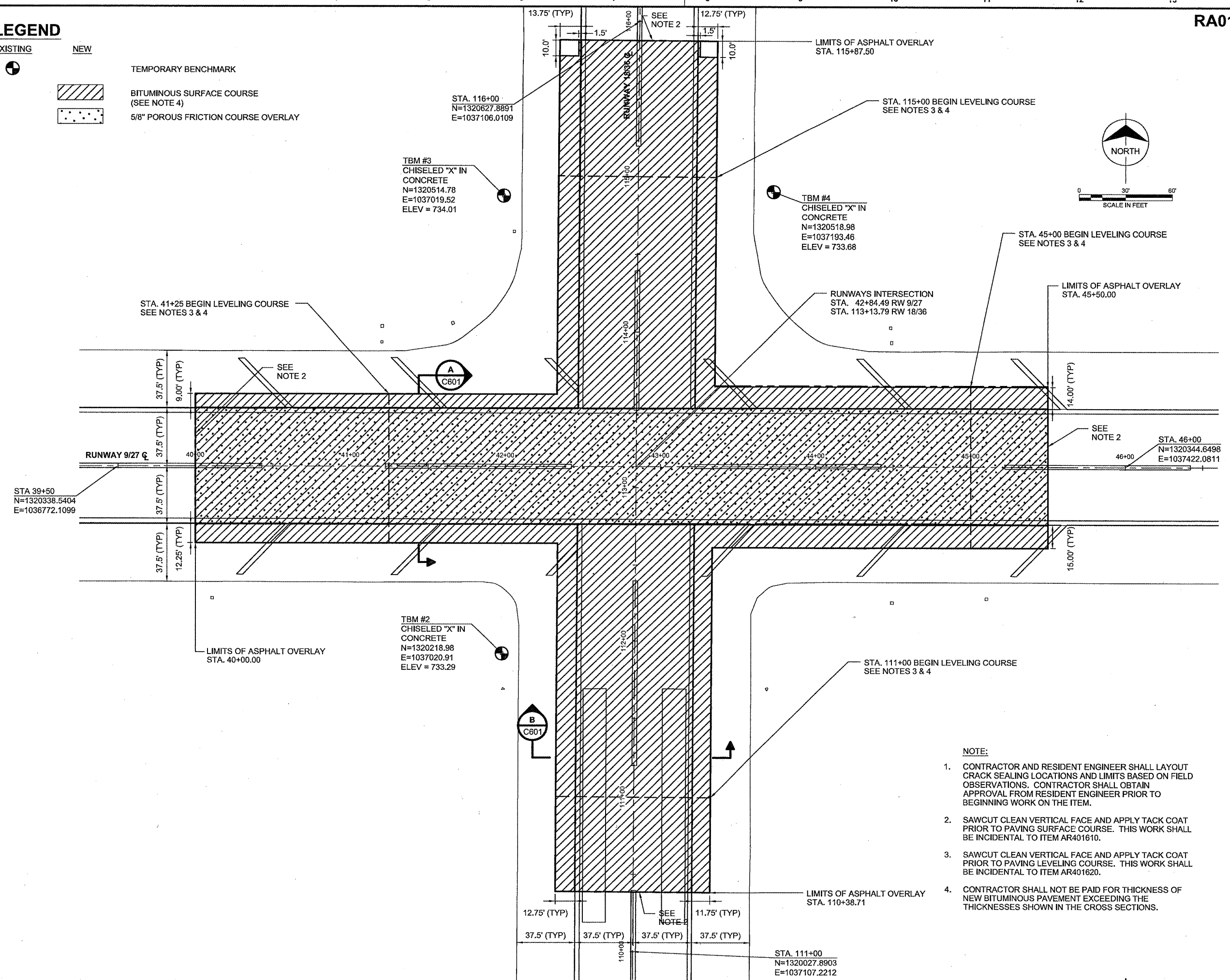
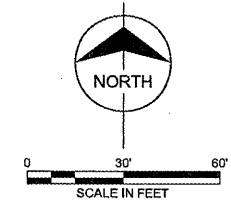
LEGEND

- EXISTING NEW
- TEMPORARY BENCHMARK
 - BITUMINOUS SURFACE COURSE (SEE NOTE 4)
 - 5/8" POROUS FRICTION COURSE OVERLAY

RA013

no.	date	by	ckd	description
0	03/05/09	REL	BJQ	ISSUED FOR BID

Scale For Microfilm
Millimeters
Inches



- NOTE:**
- CONTRACTOR AND RESIDENT ENGINEER SHALL LAYOUT CRACK SEALING LOCATIONS AND LIMITS BASED ON FIELD OBSERVATIONS. CONTRACTOR SHALL OBTAIN APPROVAL FROM RESIDENT ENGINEER PRIOR TO BEGINNING WORK ON THE ITEM.
 - SAWCUT CLEAN VERTICAL FACE AND APPLY TACK COAT PRIOR TO PAVING SURFACE COURSE. THIS WORK SHALL BE INCIDENTAL TO ITEM AR401610.
 - SAWCUT CLEAN VERTICAL FACE AND APPLY TACK COAT PRIOR TO PAVING LEVELING COURSE. THIS WORK SHALL BE INCIDENTAL TO ITEM AR401620.
 - CONTRACTOR SHALL NOT BE PAID FOR THICKNESS OF NEW BITUMINOUS PAVEMENT EXCEEDING THE THICKNESSES SHOWN IN THE CROSS SECTIONS.

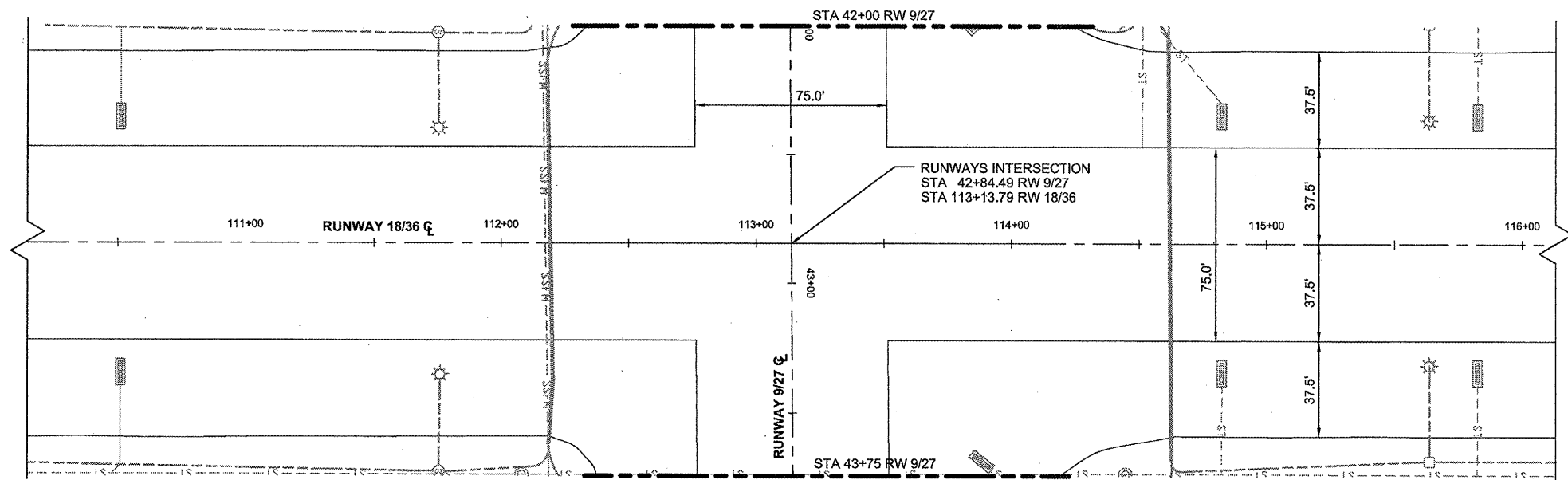


date	06/11/2008	detailed	R. LEE
designed	R. LEE	checked	B. QUINLAN



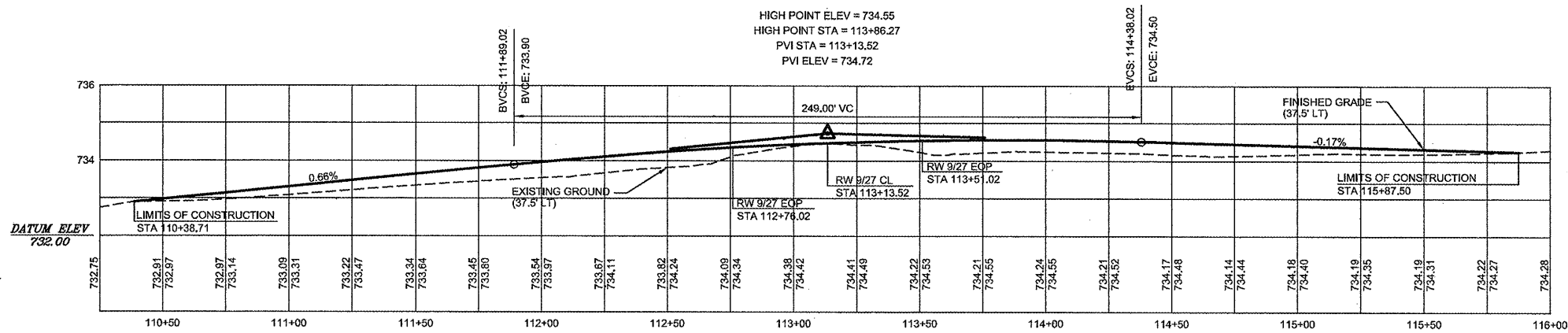
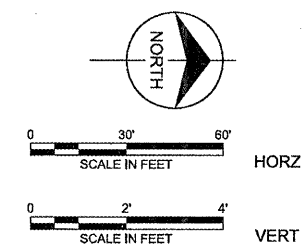
RANTOUL NATIONAL AVIATION CENTER SITE GEOMETRY PLAN			
project	49089	contract	CONTRACT
drawing	C201 - 0		rev.
sheet	6	of	19
file	49089C201.DWG		

COPYRIGHT © 2008 BURNS & MCDONNELL ENGINEERING COMPANY, INC.

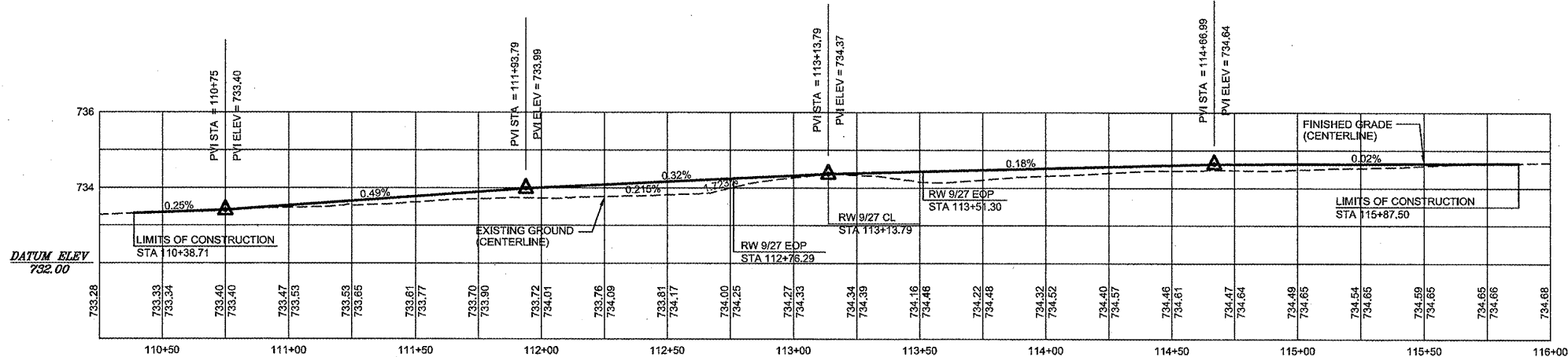


RA013

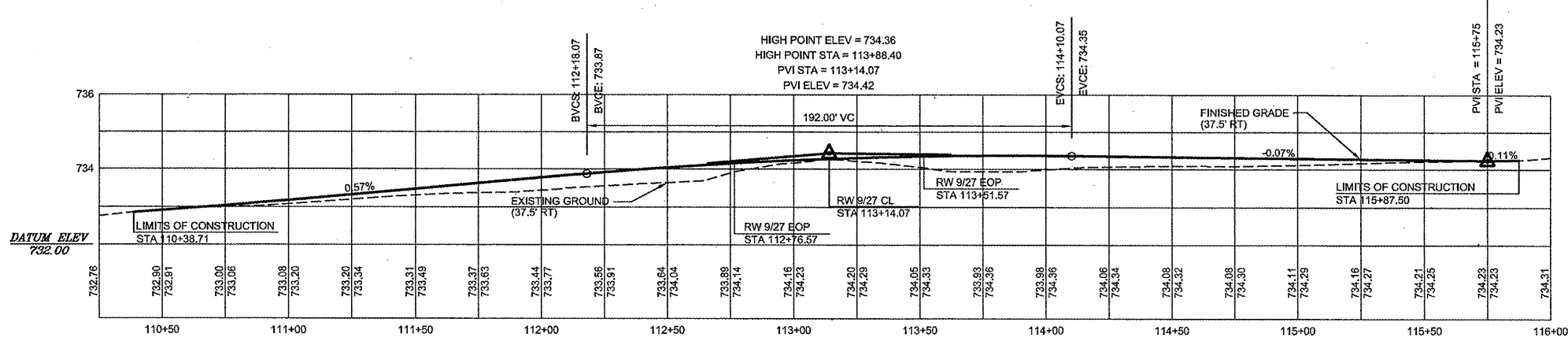
no.	date	by	ckd	description
0	03/05/09	REL	BJQ	ISSUED FOR BID



LEFT EOP (37.5' LEFT)



CENTERLINE



RIGHT EOP (37.5' RIGHT)



date	06/11/2008	detailed	R. LEE
designed	R. LEE	checked	B. QUINLAN



RANTOUL NATIONAL AVIATION CENTER	
PLAN AND PROFILE	
RUNWAY 18/36	
project	49089
contract	CONTRACT
drawing	C301 - 0
sheet 7 of 19 sheets	file 49089C301.DWG

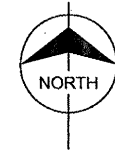
Scale For Microfitting

Inches

COPYRIGHT © 2008 BURNS & MCDONNELL ENGINEERING COMPANY, INC.

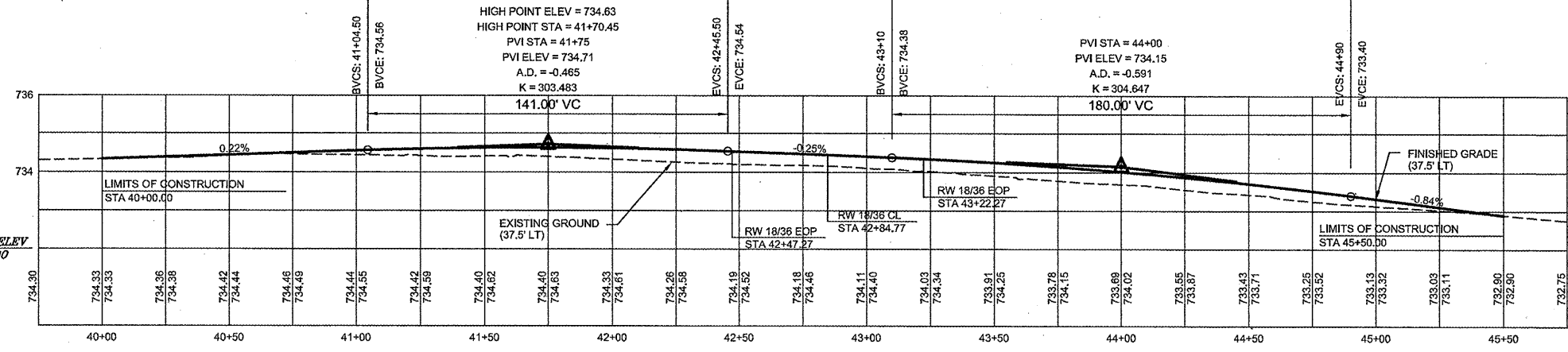
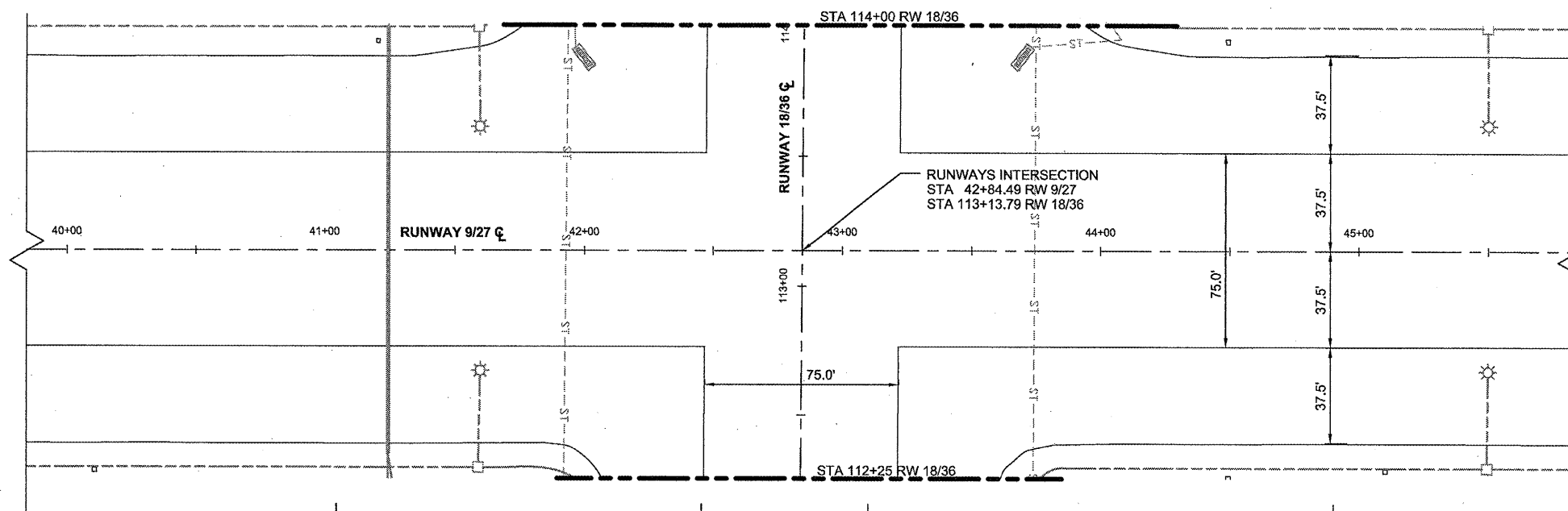
RA013

no.	date	by	ckd	description
0	03/05/09	REL	BJQ	ISSUED FOR BID

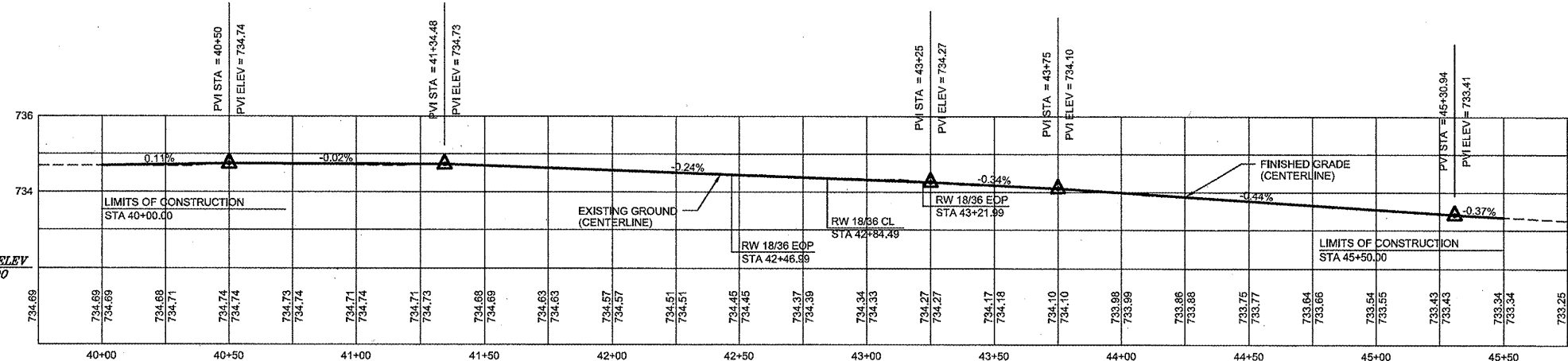


0 30' 60'
SCALE IN FEET
HORZ

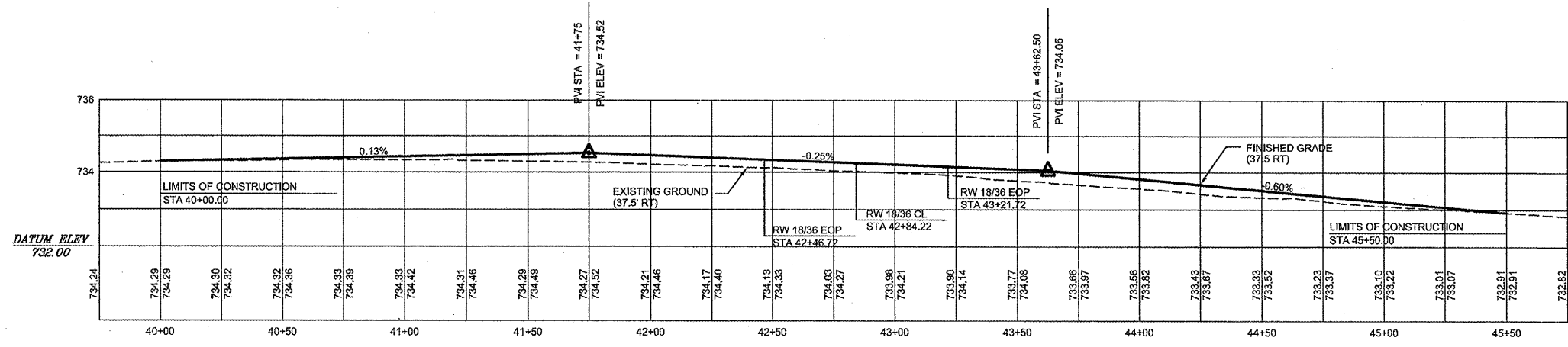
0 2' 4'
SCALE IN FEET
VERT



LEFT EOP (37.5' LEFT)



CENTERLINE



RIGHT EOP (37.5' RIGHT)



date	06/11/2008	detailed	R. LEE
designed	R. LEE	checked	B. QUINLAN



RANTOUL NATIONAL AVIATION CENTER
PLAN AND PROFILE
RUNWAY 9/27

project	49089	contract	
---------	-------	----------	--

drawing **C302** rev. **0**

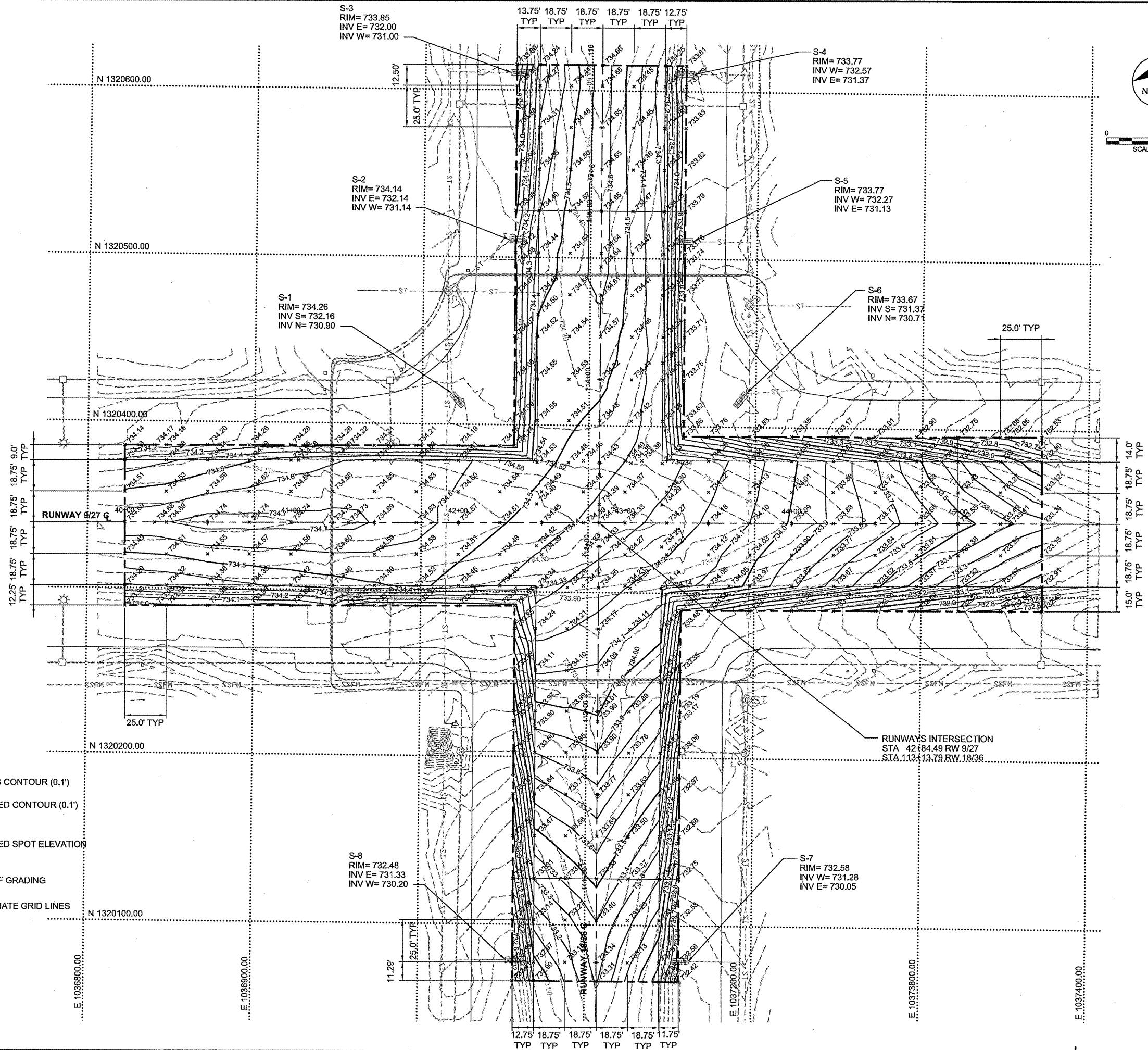
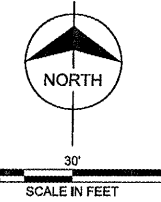
sheet 8 of 19 sheets
file 49089C302.DWG

Scale For Microfilming
Millimeters
Inches

COPYRIGHT © 2008 BURNS & MCDONNELL ENGINEERING COMPANY, INC.

RA013

no.	date	by	ckd	description
0	03/05/09	REL	BJQ	ISSUED FOR BID



LEGEND

- EXISTING CONTOUR (0.1')
- PROPOSED CONTOUR (0.1')
- XXXXX PROPOSED SPOT ELEVATION
- - - - - LIMITS OF GRADING
- COORDINATE GRID LINES

RUNWAYS INTERSECTION
 STA 42+84.49 RW 9/27
 STA 113+13.78 RW 18/36



date	06/11/2008	detailed	R. LEE
designed	R. LEE	checked	B. QUINLAN



RANTOUL NATIONAL AVIATION CENTER
 GRADING PLAN

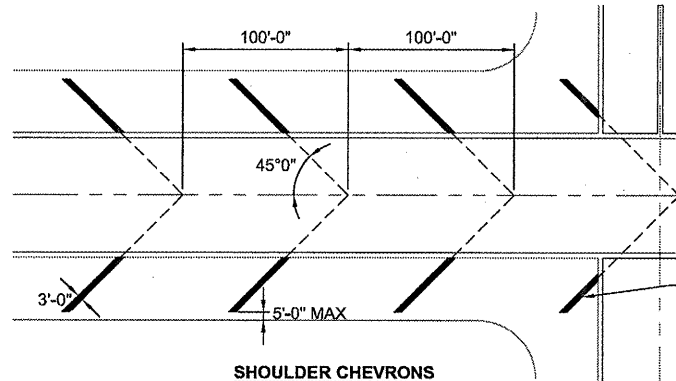
project	49089	contract	CONTRACT
drawing	C401	rev.	0
sheet	9	of	19 sheets
file 49089C401.DWG			

COPYRIGHT © 2008 BURNS & MCDONNELL ENGINEERING COMPANY, INC.

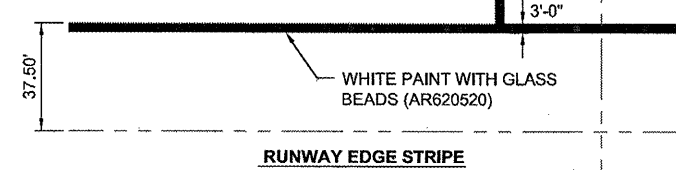
STA 116+39.67
END RW 18-36
CENTERLINE STRIPING

RA013

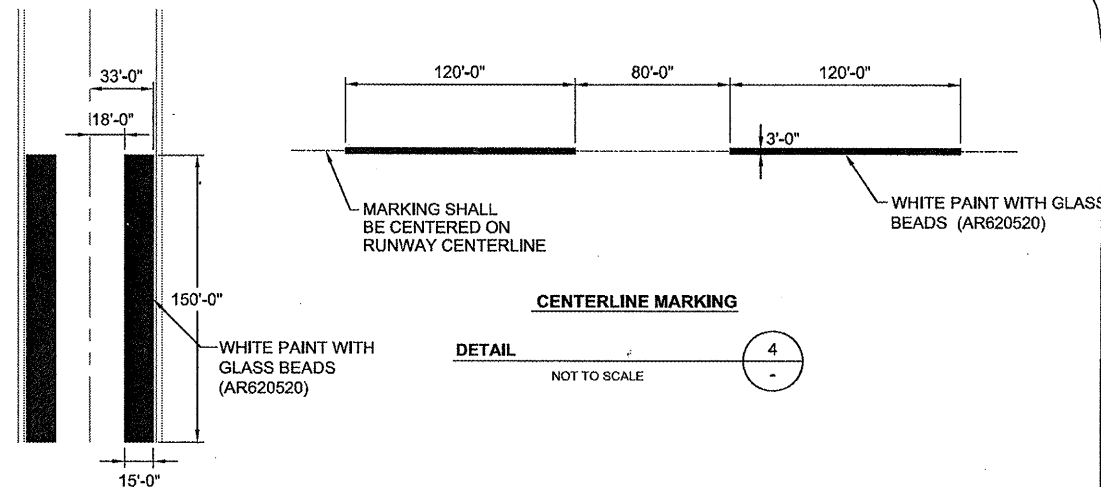
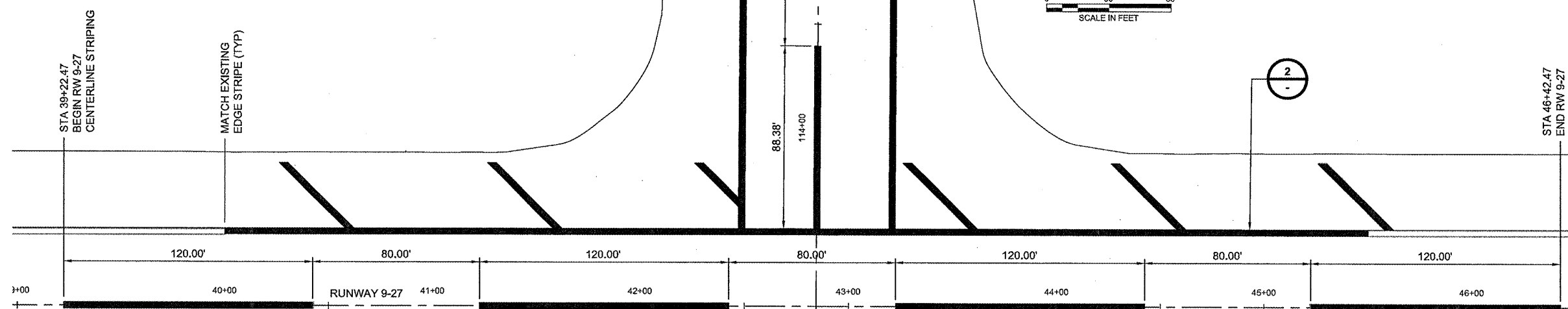
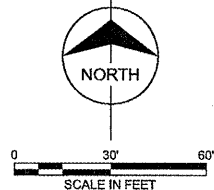
no.	date	by	ckd	description
0	03/05/09	REL	BJQ	ISSUED FOR BID



SHOULDER CHEVRONS
DETAIL 1
NOT TO SCALE



RUNWAY EDGE STRIPE
DETAIL 2
NOT TO SCALE



CENTERLINE MARKING
DETAIL 4
NOT TO SCALE

RUNWAY AIMING POINT MARKINGS
DETAIL 3
NOT TO SCALE

STA 110+38.71
BEGIN RW 18-36
CENTERLINE STRIPING

STA 111+68.49
END RW 18-36
AIMING POINT MARKING

NOTES:

1. PAVEMENT MARKING SHALL BE PLACED AFTER ALL NEW PAVEMENT HAS BEEN ACCEPTED.
2. EXISTING PAVEMENT MARKING SHALL BE REMOVED PRIOR TO THE PLACEMENT OF NEW MARKINGS PER THE REQUIREMENTS OF SPECIFICATION 620.
3. SUCCESSIVE APPLICATIONS ON RUNWAY 9-27 POROUS FRICTION COURSE SURFACE SHALL BE APPLIED FROM OPPOSITE DIRECTIONS IN ACCORDANCE WITH ITEM 620.



date	06/11/2008	detailed	R. LEE
designed	R. LEE	checked	B. QUINLAN



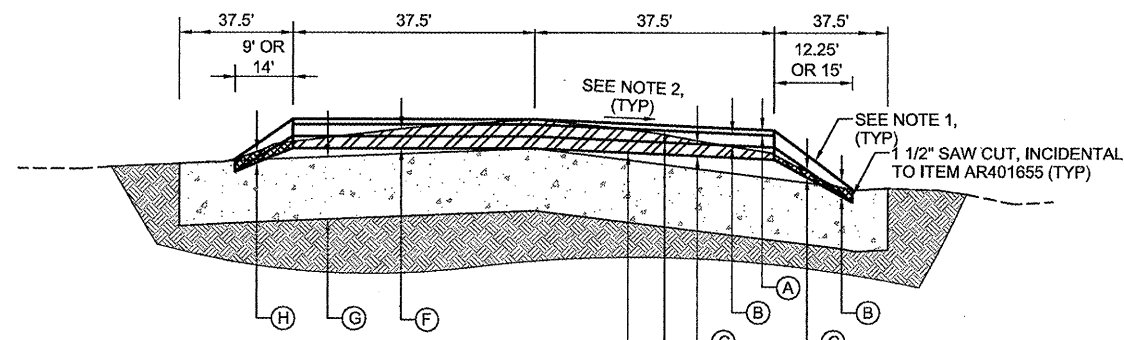
RANTOUL NATIONAL AVIATION CENTER
PAVEMENT MARKING PLAN
AND DETAILS

project	49089	contract	CONTRACT
drawing	C501	rev.	0
sheet	10	of	19 sheets
file	49089C501.DWG		

Scale For Microfilming
Millimeters
Inches

COPYRIGHT © 2008 BURNS & MCDONNELL ENGINEERING COMPANY, INC.

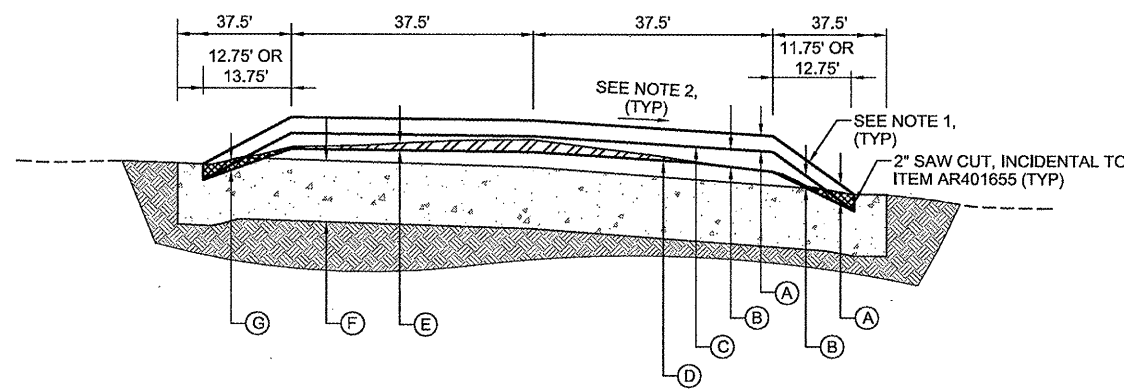
no.	date	by	ckd	description
0	03/05/09	REL	BJQ	ISSUED FOR BID



SECTION RUNWAY 9/27
NTS
A
C101
C201

- NOTES:**
- SHOULDER SLOPE VARIES FROM 1.5% (MIN.) TO 5% (MAX.). ACTUAL SHOULDER GRADES SHALL BE CONSTRUCTED PER THE INFORMATION SHOWN ON THE CROSS SECTIONS.
 - PAVEMENT SLOPE VARIES, ACTUAL PAVEMENT GRADES SHALL BE CONSTRUCTED PER THE INFORMATION SHOWN ON THE PROFILES AND CROSS SECTIONS.
 - HMA SURFACE LEVELING COURSE FROM STA. 41+25.00 TO 45+00.00.

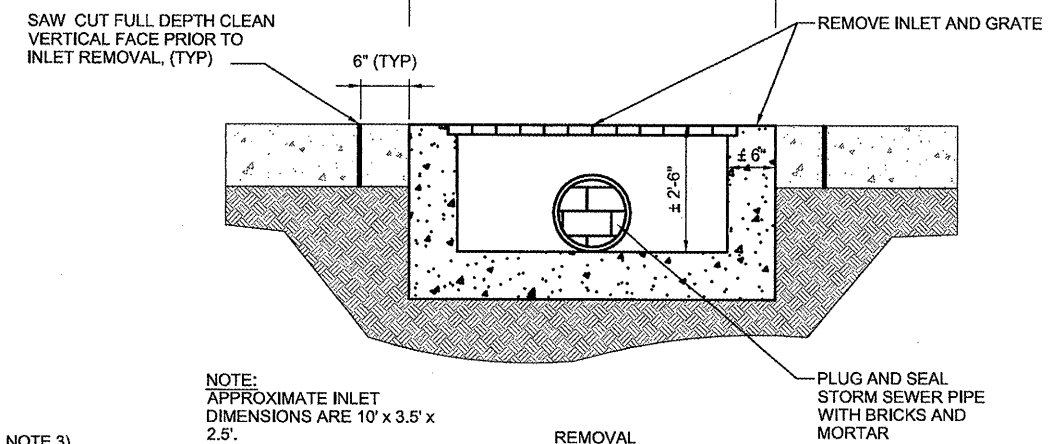
- (A) 5/8" POROUS FRICTION COURSE OVERLAY (AR402620)
- (B) 1 1/2" HMA SURFACE COURSE (N30) (AR401610)
- (C) VARIABLE DEPTH HMA SURFACE LEVELING COURSE (N30) (AR401620), (SEE NOTE 3)
- (D) BITUMINOUS TACK COAT (AR603510)
- (E) BITUMINOUS PRIME COAT (AR602510)
- (F) VARIABLE DEPTH BITUMINOUS PAVEMENT MILLING (AR401650)
- (G) EXISTING ± 8" CRACKED & SEATED PCC BASE COURSE
- (H) BUTT JOINT CONSTRUCTION (AR401655)



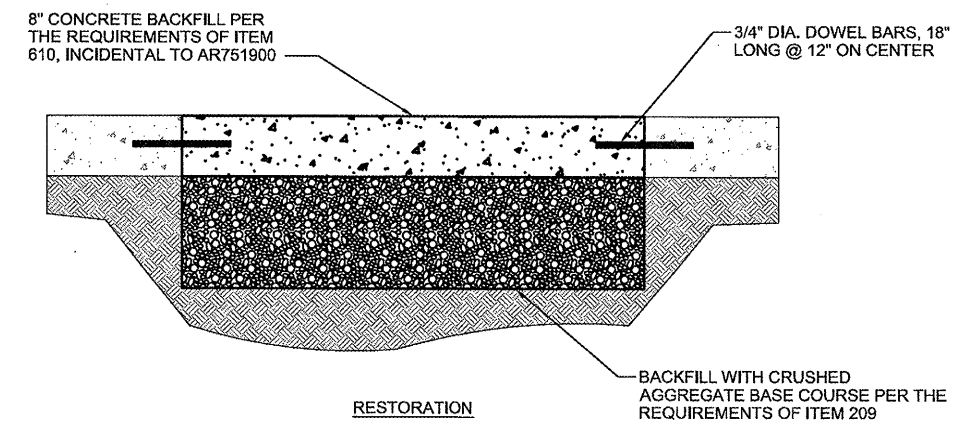
SECTION RUNWAY 18/36
NTS
B
C101
C201

- NOTES:**
- SHOULDER SLOPE VARIES FROM 1.5% (MIN.) TO 5% (MAX.). ACTUAL SHOULDER GRADES SHALL BE CONSTRUCTED PER THE INFORMATION SHOWN ON THE CROSS SECTIONS.
 - PAVEMENT SLOPE VARIES, ACTUAL PAVEMENT GRADES SHALL BE CONSTRUCTED PER THE INFORMATION SHOWN ON THE PROFILES AND CROSS SECTIONS.
 - HMA SURFACE LEVELING COURSE FROM STA. 111+00.00 TO 115+00.00.

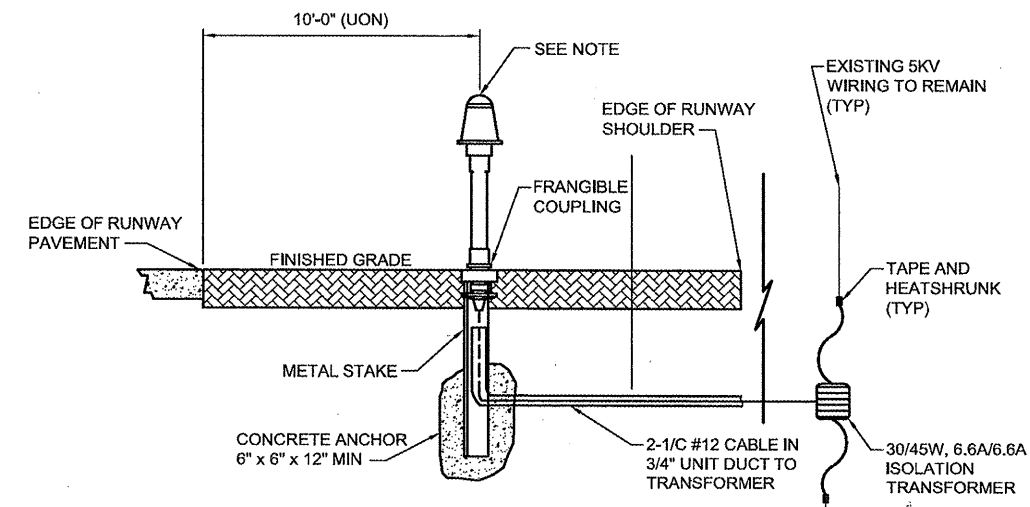
- (A) 2" HMA SURFACE COURSE (N30) (AR401610)
- (B) VARIABLE DEPTH HMA SURFACE LEVELING COURSE (N30) (AR401620), (SEE NOTE 3)
- (C) BITUMINOUS TACK COAT (AR603510)
- (D) BITUMINOUS PRIME COAT (AR602510)
- (E) VARIABLE DEPTH BITUMINOUS PAVEMENT MILLING (AR401650)
- (F) EXISTING ± 8" CRACKED & SEATED PCC BASE COURSE
- (G) BUTT JOINT CONSTRUCTION (AR401655)



NOTE:
APPROXIMATE INLET DIMENSIONS ARE 10' x 3.5' x 2.5'.



INLET REMOVAL DETAIL
NTS
1
C101



ADJUST STAKE MOUNTED LIGHT
DETAIL
NOT TO SCALE
2
C101

NOTE:
EXISTING STAKE MOUNTED LIGHT FIXTURE ASSEMBLY INCLUDING METAL STAKE TO BE REUSED. REMOVE AND REINSTALL AS REQUIRED FOR PAVING OPERATIONS. PROVIDE NEW CONCRETE ANCHOR, ISOLATION TRANSFORMER AND TAPED/HEATSHRUNK CONNECTIONS.



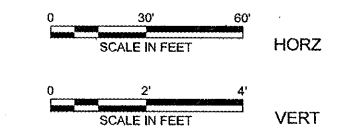
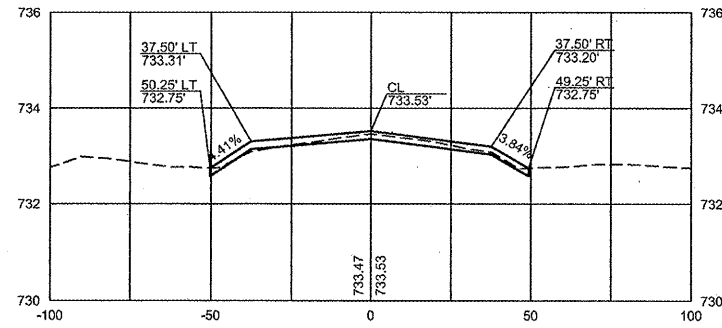
date	06/11/2008	detailed	R. LEE
designed	R. LEE	checked	B. QUINLAN



RANTOUL NATIONAL AVIATION CENTER
TYPICAL SECTIONS AND
CONSTRUCTION DETAILS

project	49089	contract	CONTRACT
drawing	C601	rev.	0
sheet	11	of	19 sheets
file	49089C601.DWG		

111+00 BACK

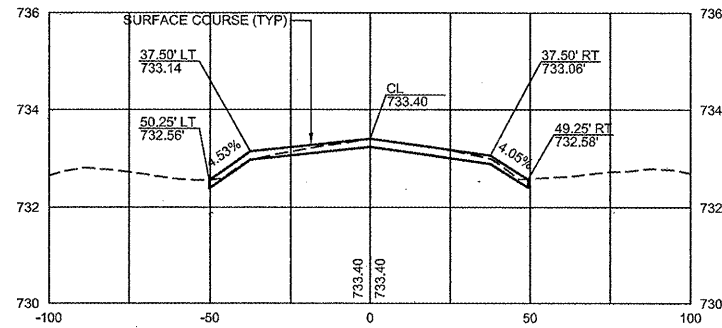


RA013

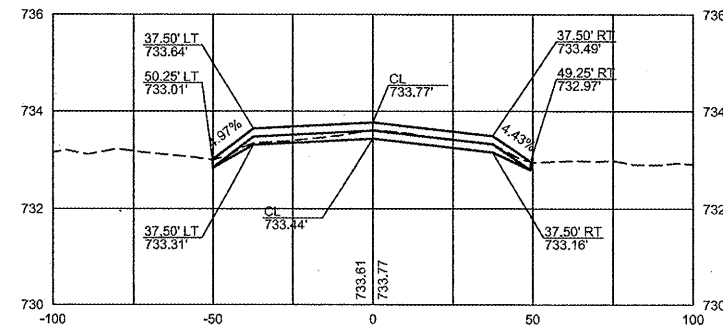
no.	date	by	ckd	description
0	03/05/09	REL	BJQ	ISSUED FOR BID



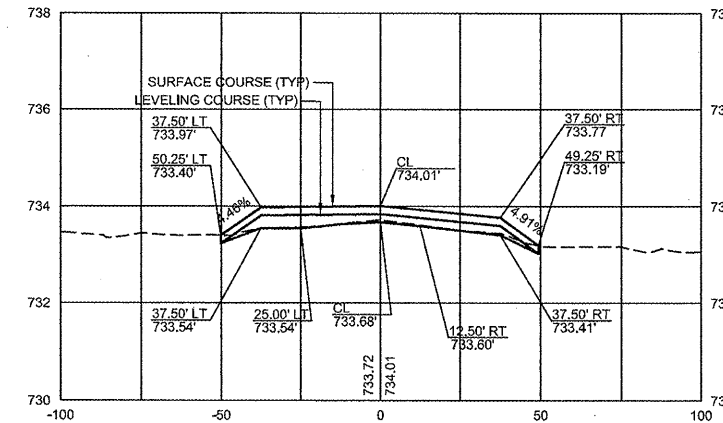
110+75



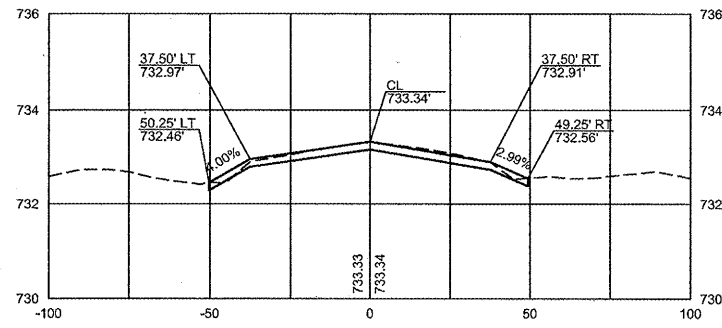
111+50



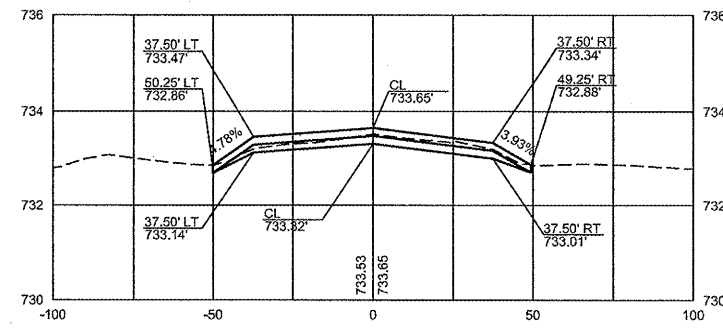
112+00



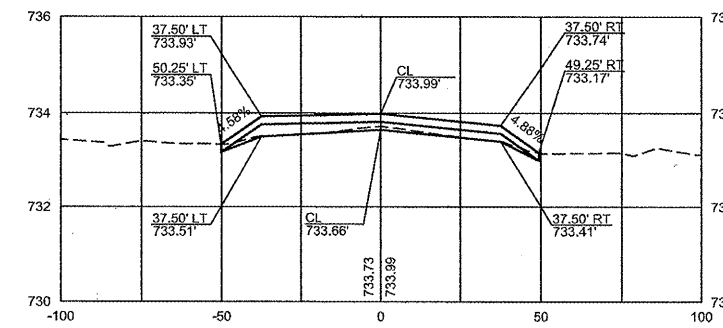
110+50



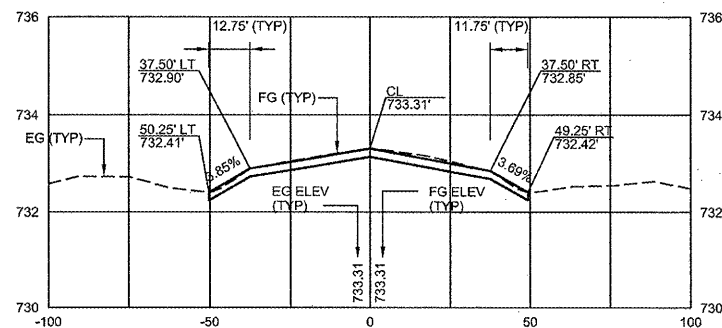
111+25



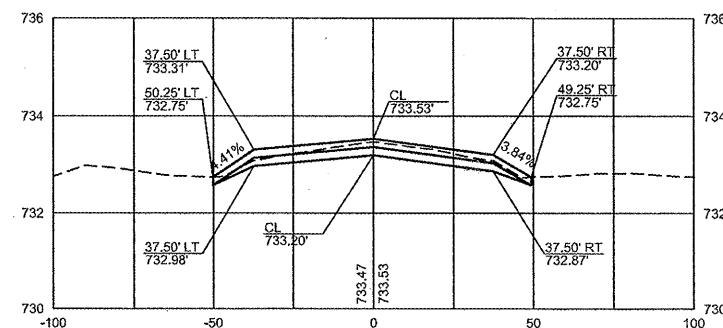
111+93.79



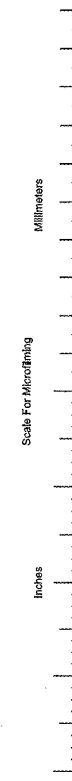
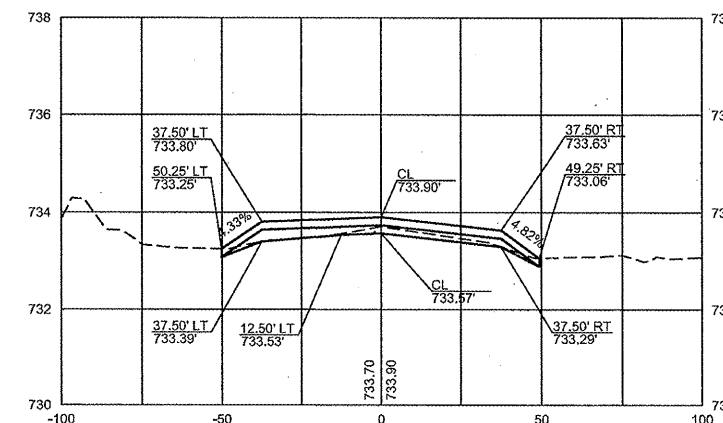
110+38.71



111+00 AHEAD



111+75



COPYRIGHT © 2008 BURNS & MCDONNELL ENGINEERING COMPANY, INC.



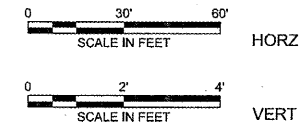
date	06/11/2008	detailed	R. LEE
designed	R. LEE	checked	B. QUINLAN



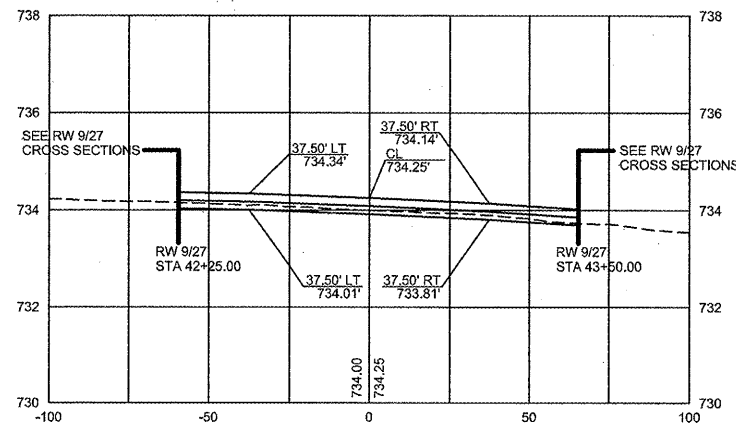
RANTOUL NATIONAL AVIATION CENTER
CROSS SECTIONS
RUNWAY 18/36

project	49089	contract	CONTRACT
drawing	X101	rev.	0
sheet	12	of 19	sheets
file	49089X101.DWG		

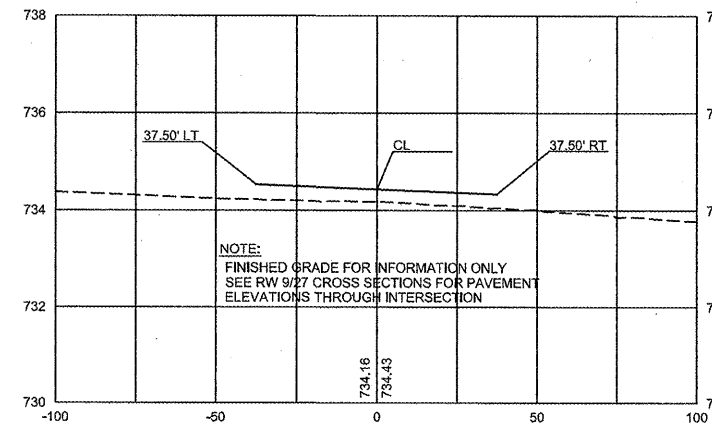
no.	date	by	ckd	description
0	03/05/09	REL	BJQ	ISSUED FOR BID



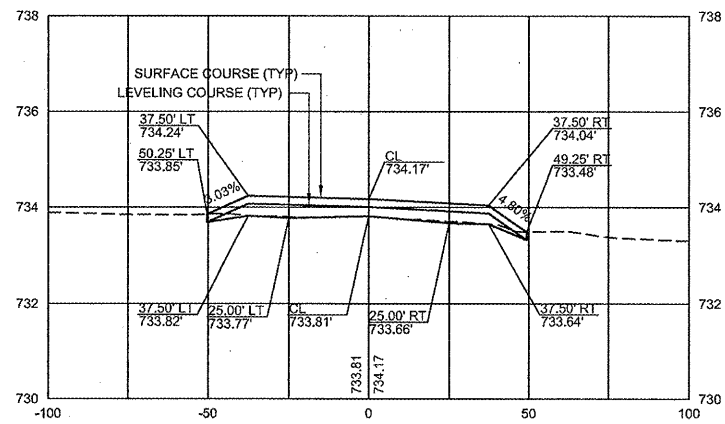
112+75



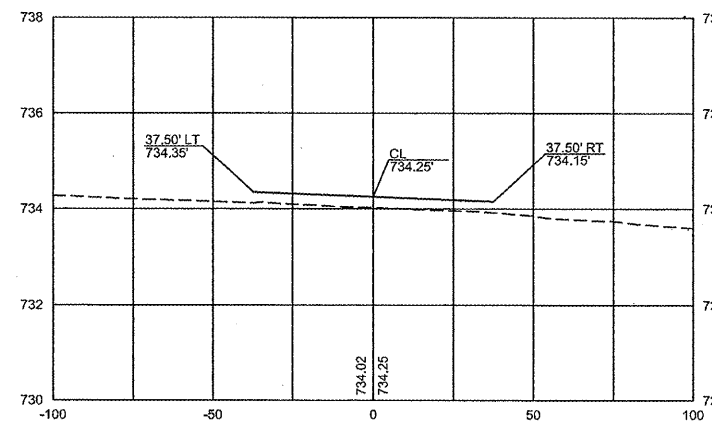
113+50



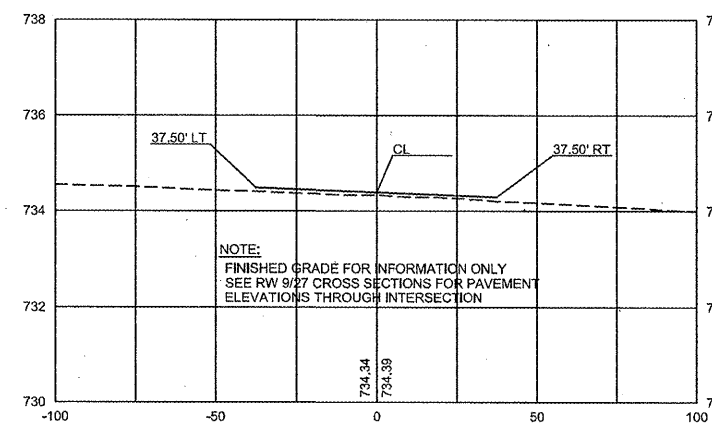
112+50



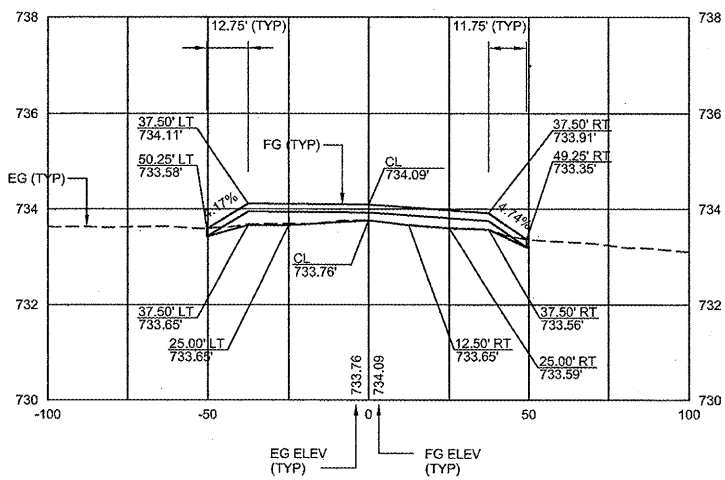
112+76.29 AHEAD



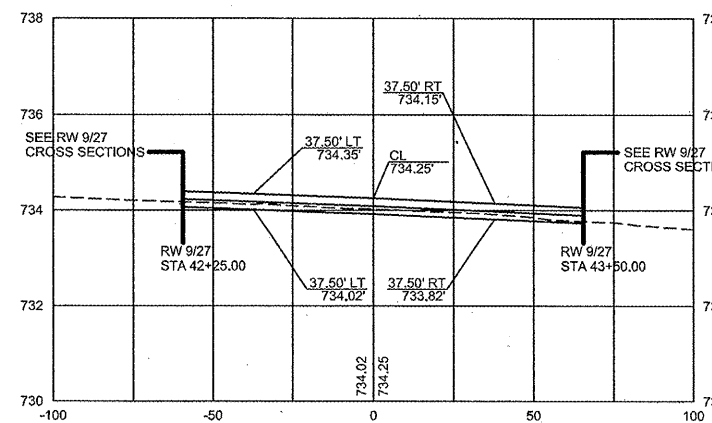
113+25



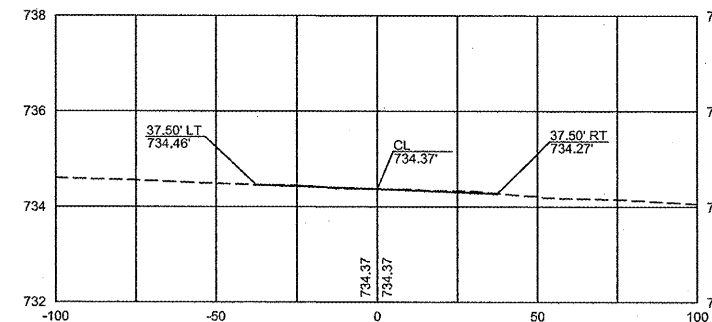
112+25



112+76.29 BACK



113+13.79



date	06/11/2008	detailed	R. LEE
designed	R. LEE	checked	B. QUINLAN



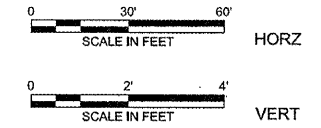
RANTOUL NATIONAL AVIATION CENTER
CROSS SECTIONS
RUNWAY 18/36

project	49089	contract	CONTRACT
drawing	X102	rev.	0

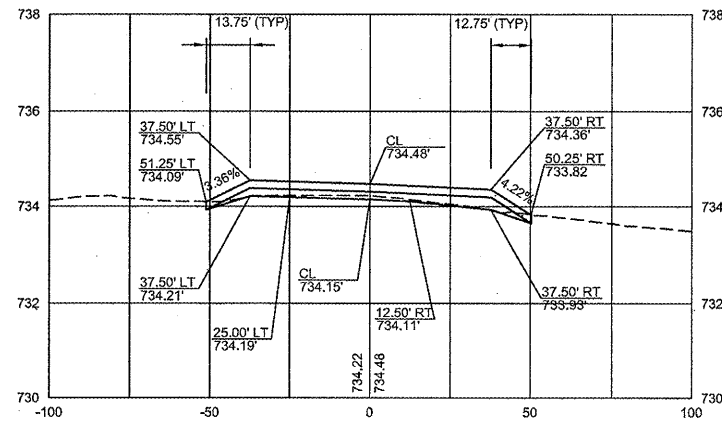
sheet 13 of 19 sheets
file 49089X102.DWG

Scale For Microfilming
Millimeters
Inches
COPYRIGHT © 2008 BURNS & MCDONNELL ENGINEERING COMPANY, INC.

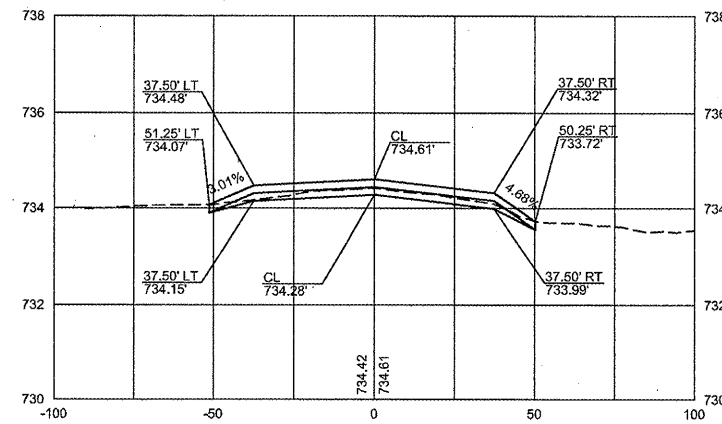
no.	date	by	ckd	description
0	03/05/09	REL	BJQ	ISSUED FOR BID



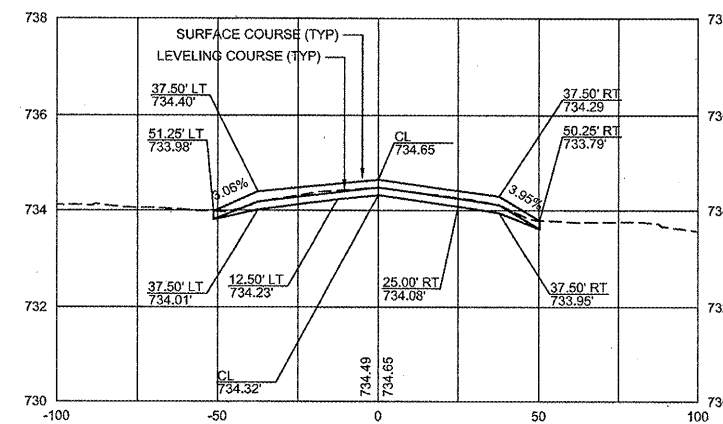
113+75



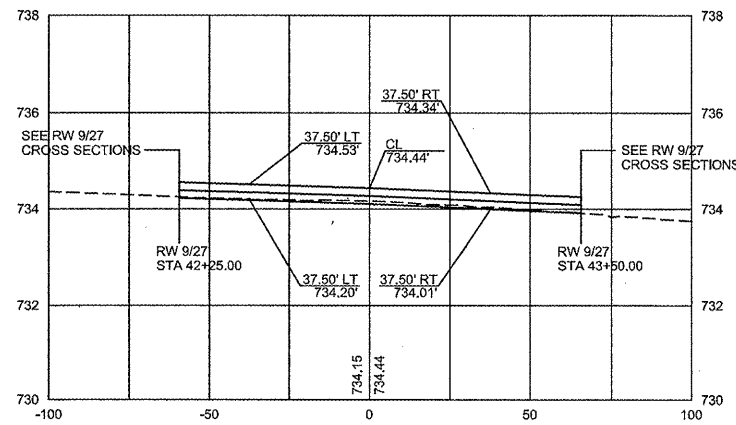
114+50



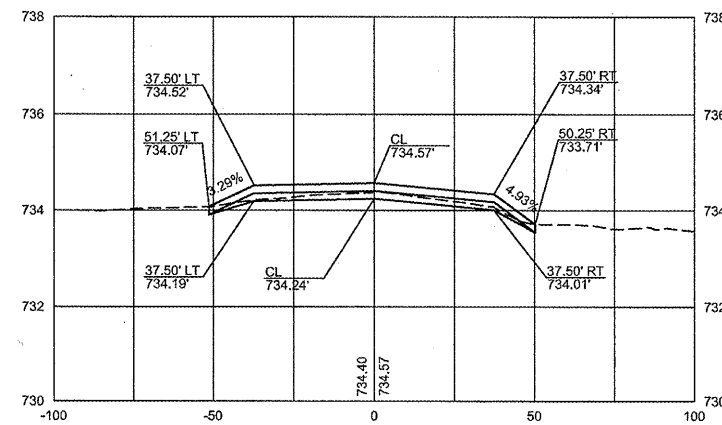
115+00 BACK



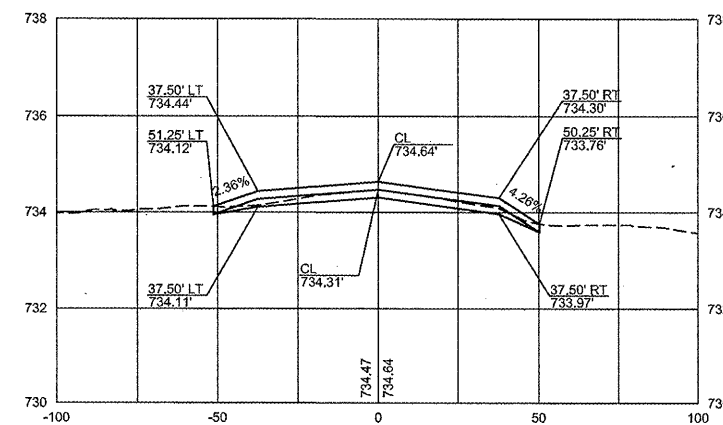
113+51.30 AHEAD



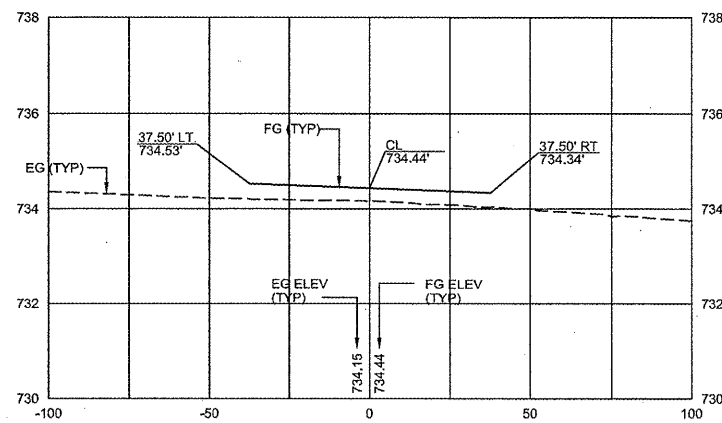
114+25



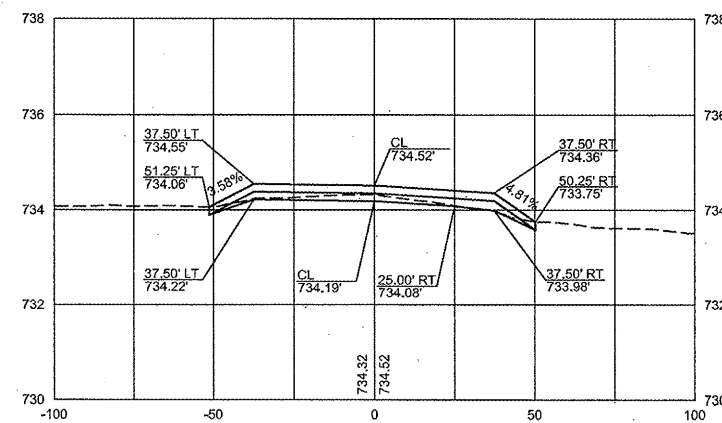
114+75



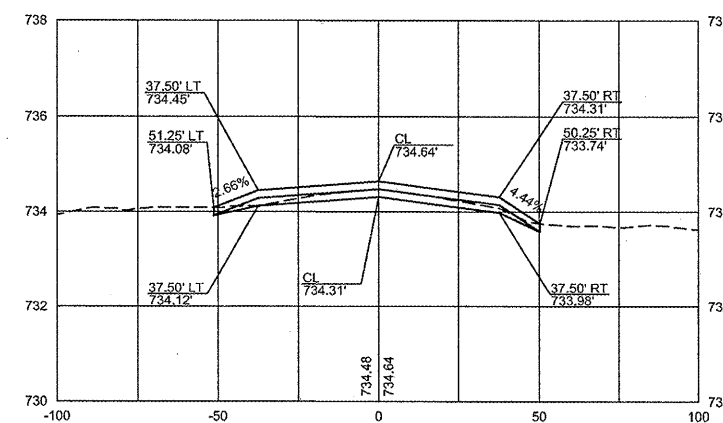
113+51.30 BACK



114+00



114+66.99



date	06/11/2008	detailed	R. LEE
designed	R. LEE	checked	B. QUINLAN



RANTOUL NATIONAL AVIATION CENTER
CROSS SECTIONS
RUNWAY 18/36

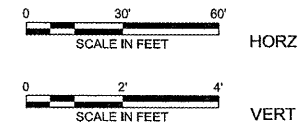
project	49089	contract	CONTRACT
drawing	X103	rev.	0
sheet	14	of	19 sheets
file	49089X103.DWG		

Scale For Microfitting
Millimeters
Inches

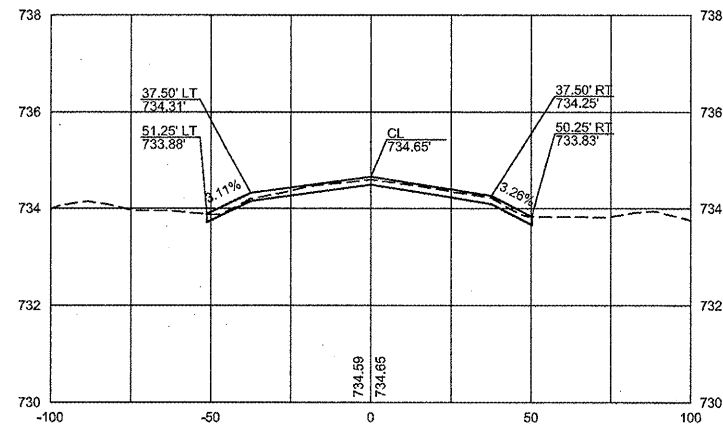
COPYRIGHT © 2008 BURNS & McDONNELL ENGINEERING COMPANY, INC.

RA013

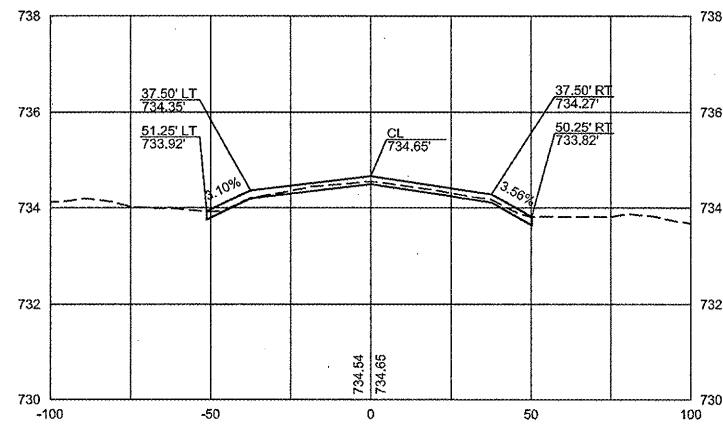
no.	date	by	ckd	description
0	03/05/09	REL	BJQ	ISSUED FOR BID



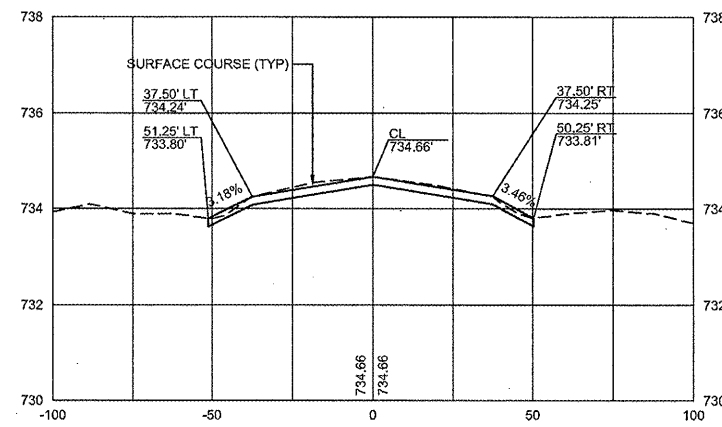
115+50



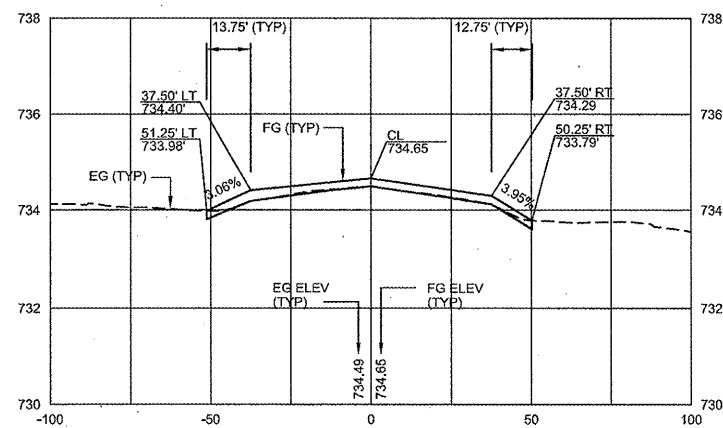
115+25



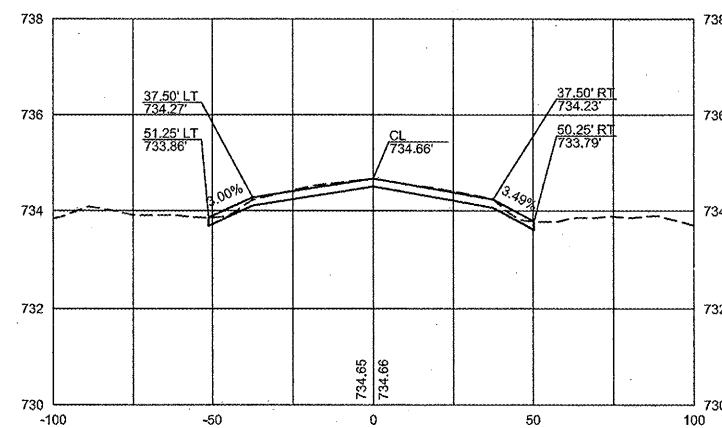
115+87.50



115+00 AHEAD



115+75



date	06/11/2008	detailed	R. LEE
designed	R. LEE	checked	B. QUINLAN



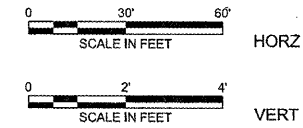
RANTOUL NATIONAL AVIATION CENTER
CROSS SECTIONS
RUNWAY 18/36

project	49089	contract	CONTRACT
drawing	X104	rev.	0
sheet	15	of	19 sheets
file	49089X104.DWG		

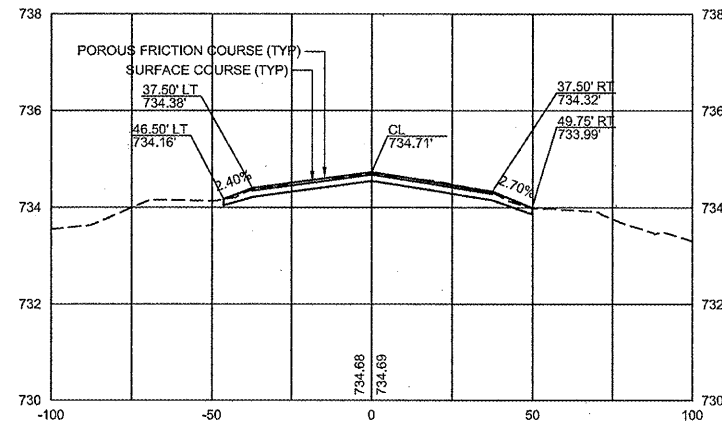
COPYRIGHT © 2008 BURNS & MCDONNELL ENGINEERING COMPANY, INC.

RA013

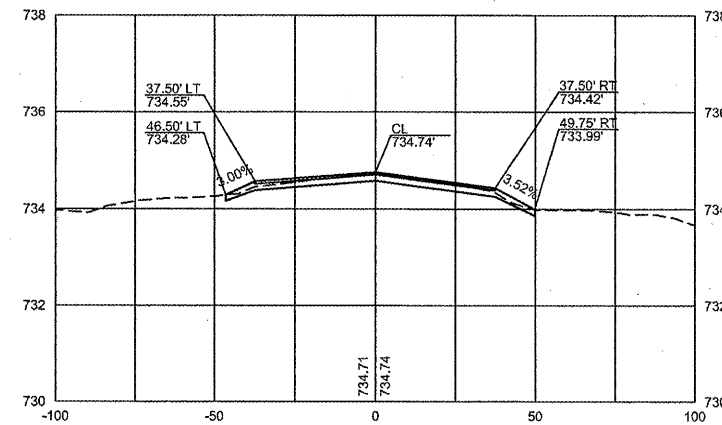
no.	date	by	ckd	description
0	03/05/09	REL	BJQ	ISSUED FOR BID



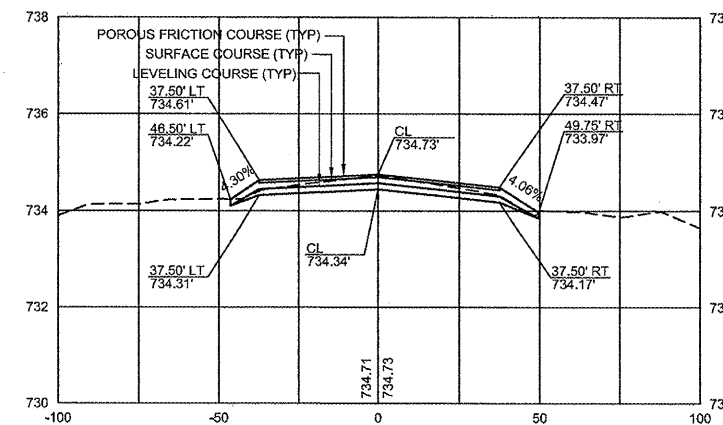
40+25



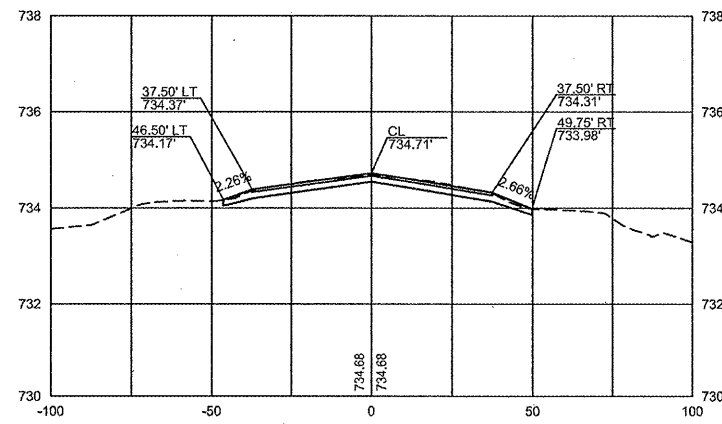
41+00



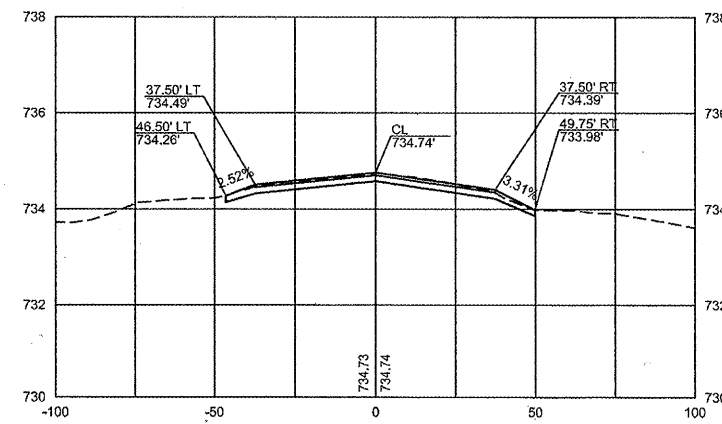
41+34.48



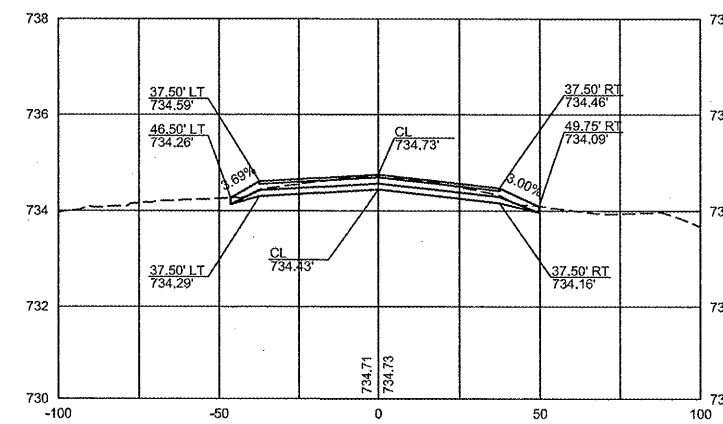
40+18.06



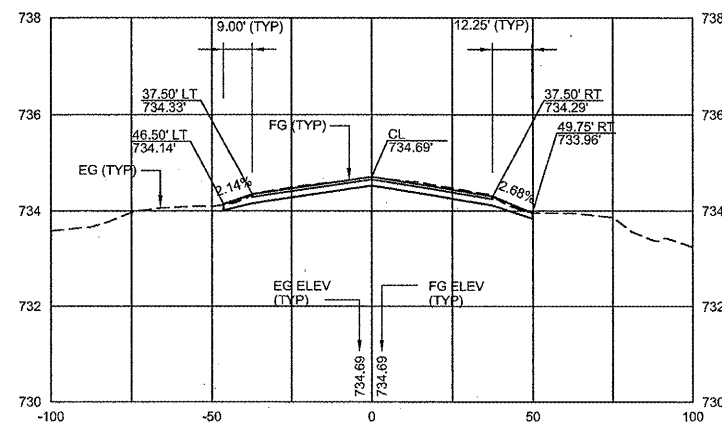
40+75



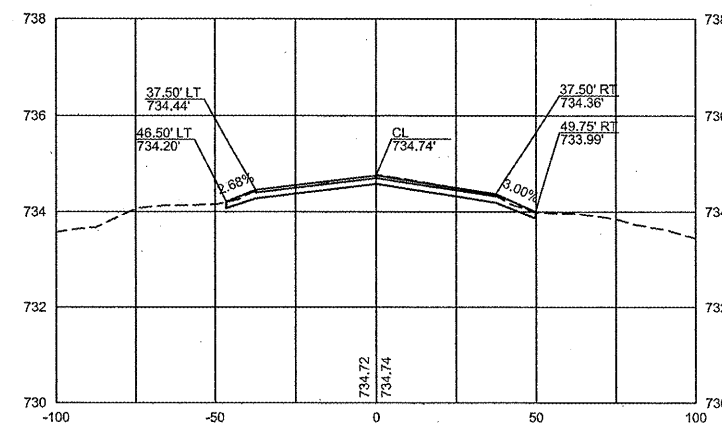
41+25 AHEAD



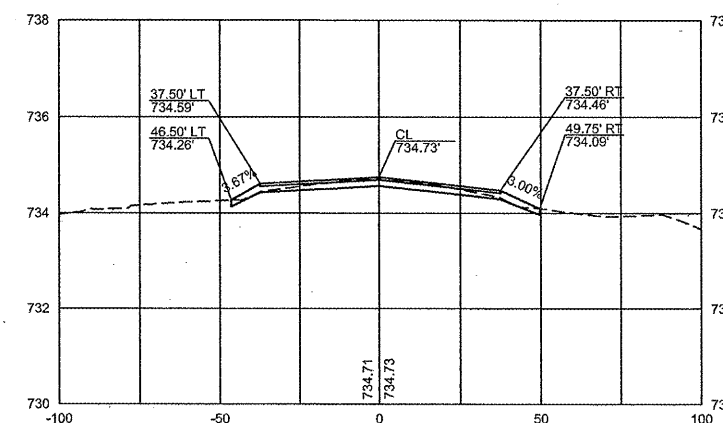
40+00



40+50



41+25 BACK



date	06/11/2008	detailed	R. LEE
designed	R. LEE	checked	B. QUINLAN



RANTOUL NATIONAL AVIATION CENTER
CROSS SECTIONS
RUNWAY 9/27

project	49089	contract	CONTRACT
---------	-------	----------	----------

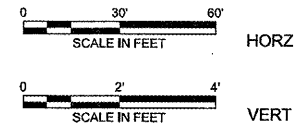
drawing **X105** - rev. **0**

sheet 16 of 19 sheets
file 49089X105.DWG

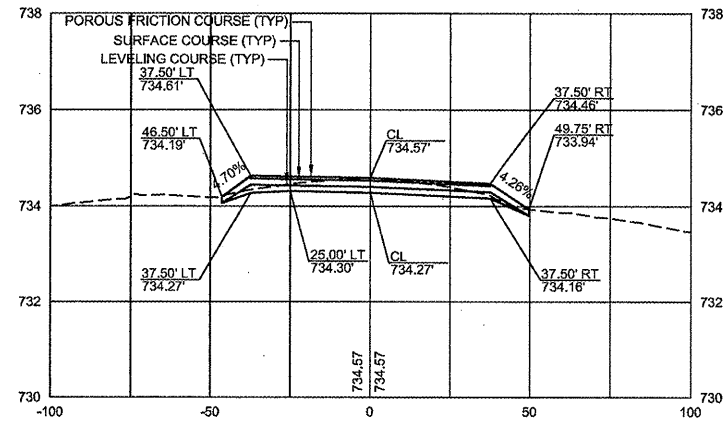
Scale For Microfilming
Millimeters
Inches

COPYRIGHT © 2008 BURNS & MCDONNELL ENGINEERING COMPANY, INC.

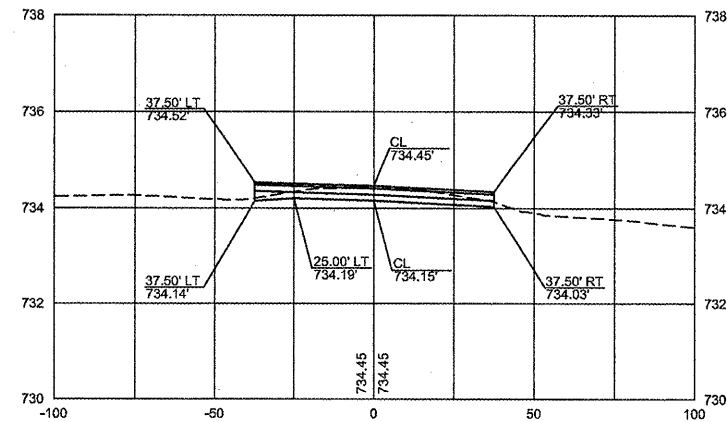
no.	date	by	ckd	description
0	03/05/09	REL	BJQ	ISSUED FOR BID



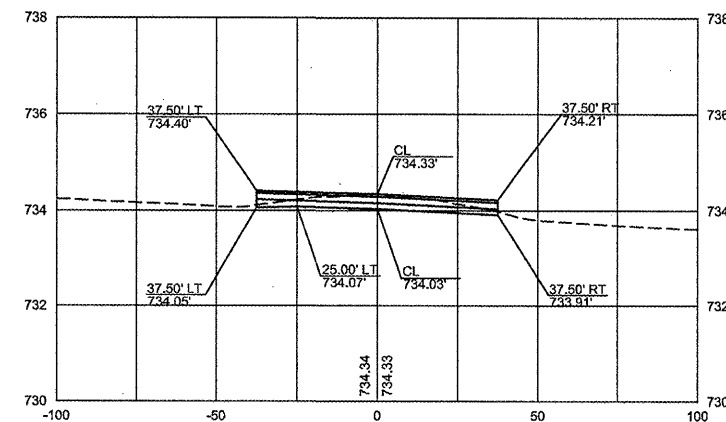
42+00



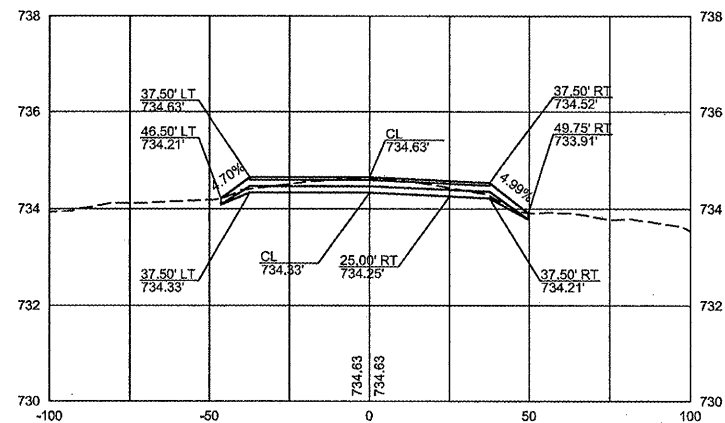
42+50



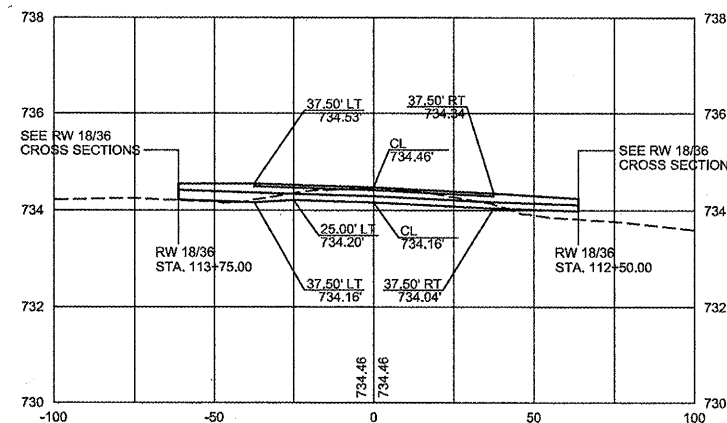
43+00



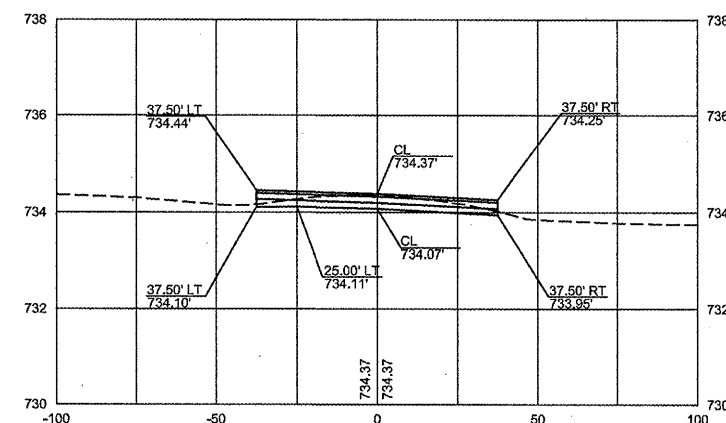
41+75



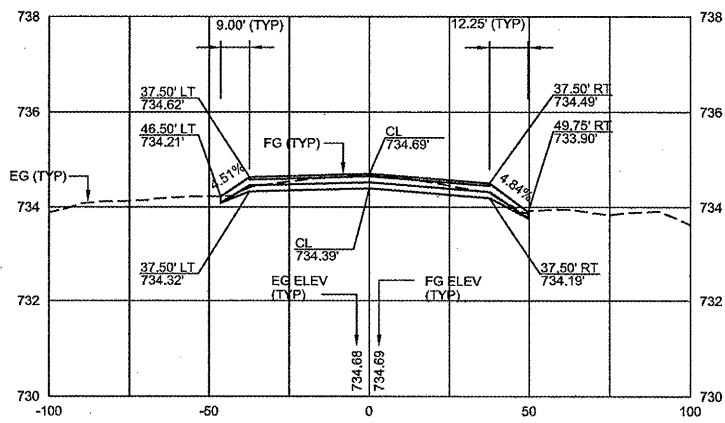
42+46.99



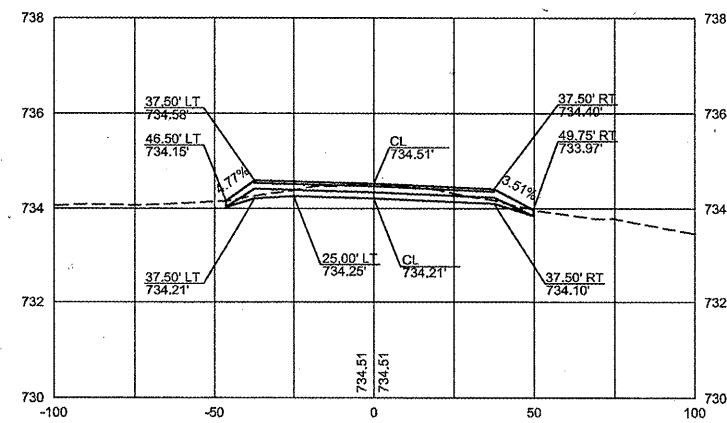
42+84.49



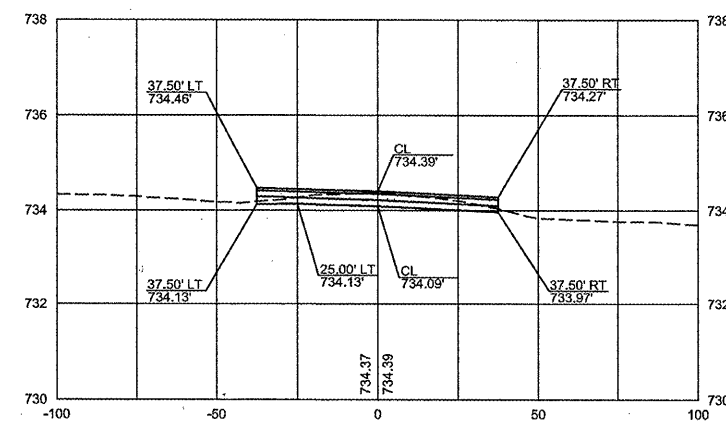
41+50



42+25



42+75



date	06/11/2008	detailed	R. LEE
designed	R. LEE	checked	B. QUINLAN



RANTOUL NATIONAL AVIATION CENTER
CROSS SECTIONS
RUNWAY 9/27

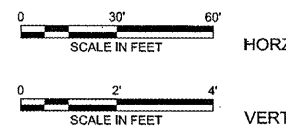
project	49089	contract	CONTRACT
drawing	X106	rev.	0

sheet 17 of 19 sheets
file 49089X106.DWG

Scale For Microfilming
Millimeters
Inches

COPYRIGHT © 2008 BURNS & MCDONNELL ENGINEERING COMPANY, INC.

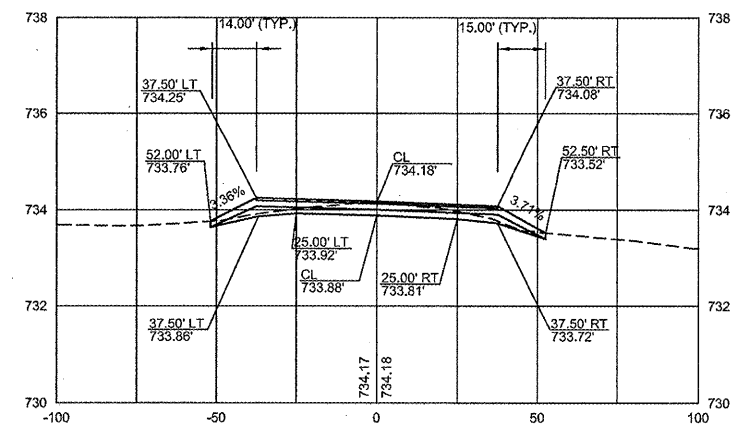
Scale For Microfitting
Inches
Millimeters



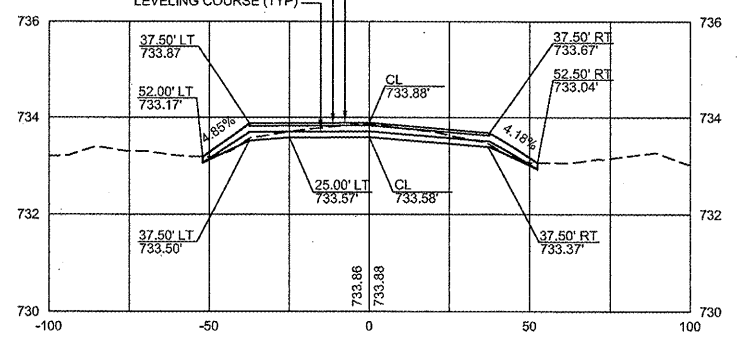
45+00 AHEAD RA013

no.	date	by	ckd	description
0	03/05/09	REL	BJQ	ISSUED FOR BID

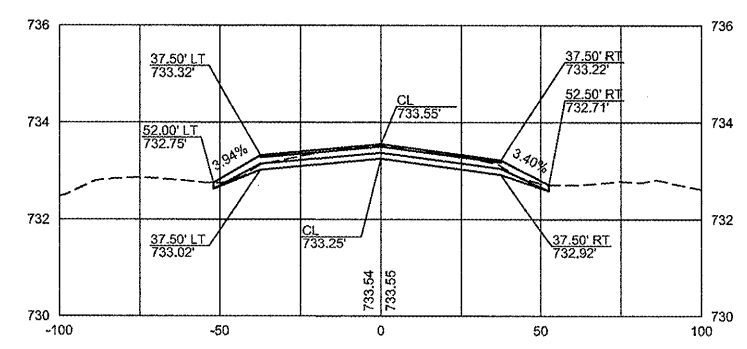
43+50



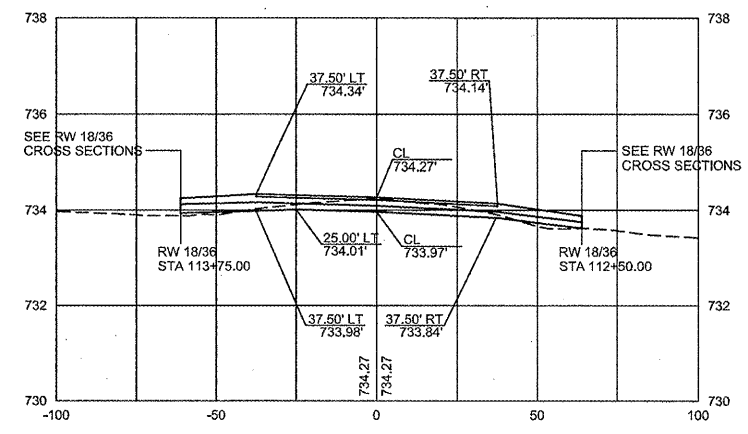
44+25



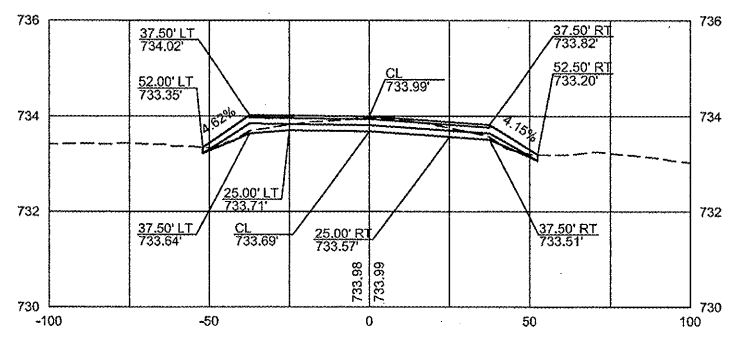
45+00 BACK



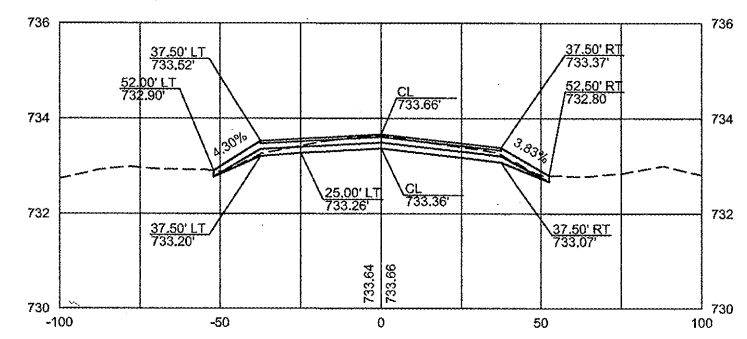
43+25



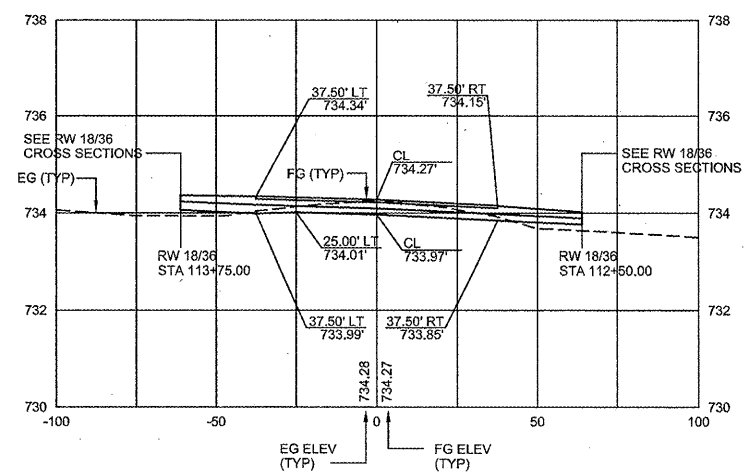
44+00



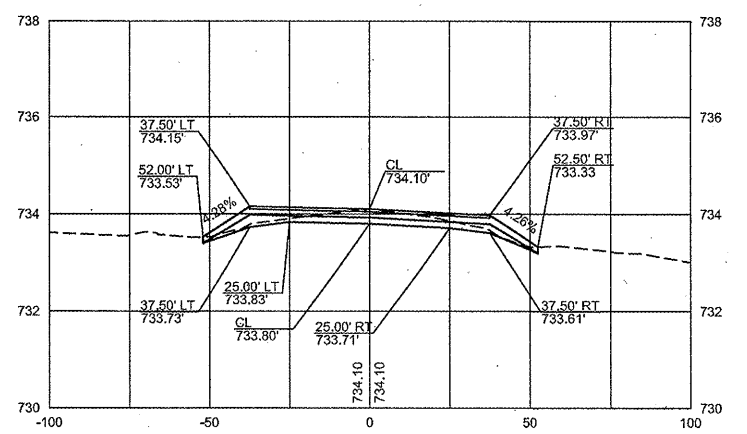
44+75



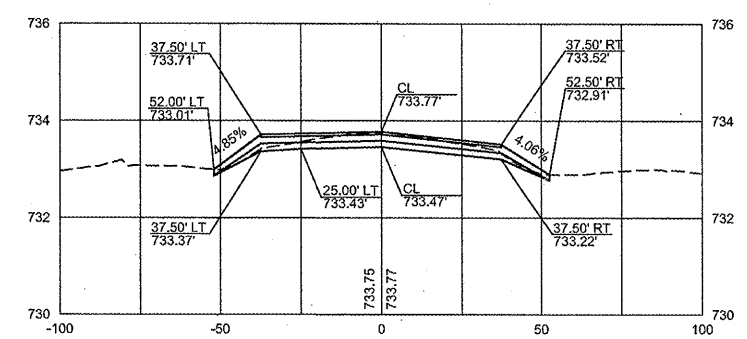
43+21.99



43+75



44+50



date	06/11/2008	detailed	R. LEE
designed	R. LEE	checked	B. QUINLAN

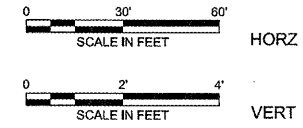


RANTOUL NATIONAL AVIATION CENTER
CROSS SECTIONS
RUNWAY 9/27

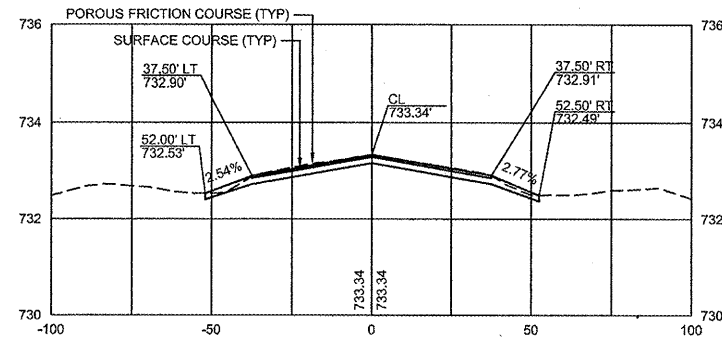
project	49089	contract	CONTRACT
drawing	X107	rev.	0
sheet	18	of 19	sheets
file	49089X107.DWG		

RA013

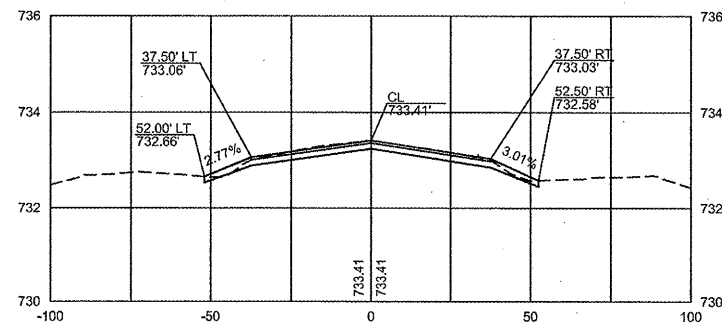
no.	date	by	ckd	description
0	03/05/09	REL	BJQ	ISSUED FOR BID



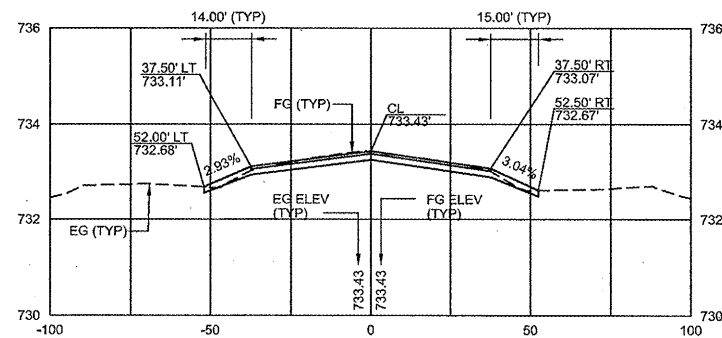
45+50



45+30.94



45+25



date	06/11/2008	detailed	R. LEE
designed	R. LEE	checked	B. QUINLAN



RANTOUL NATIONAL AVIATION CENTER
CROSS SECTIONS
RUNWAY 9/27

project	49089	contract	CONTRACT
drawing	X108	rev.	0
sheet	19 of 19	sheets	
file	49089X108.DWG		

