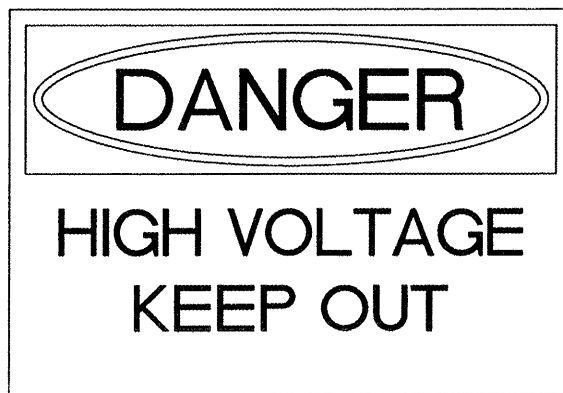
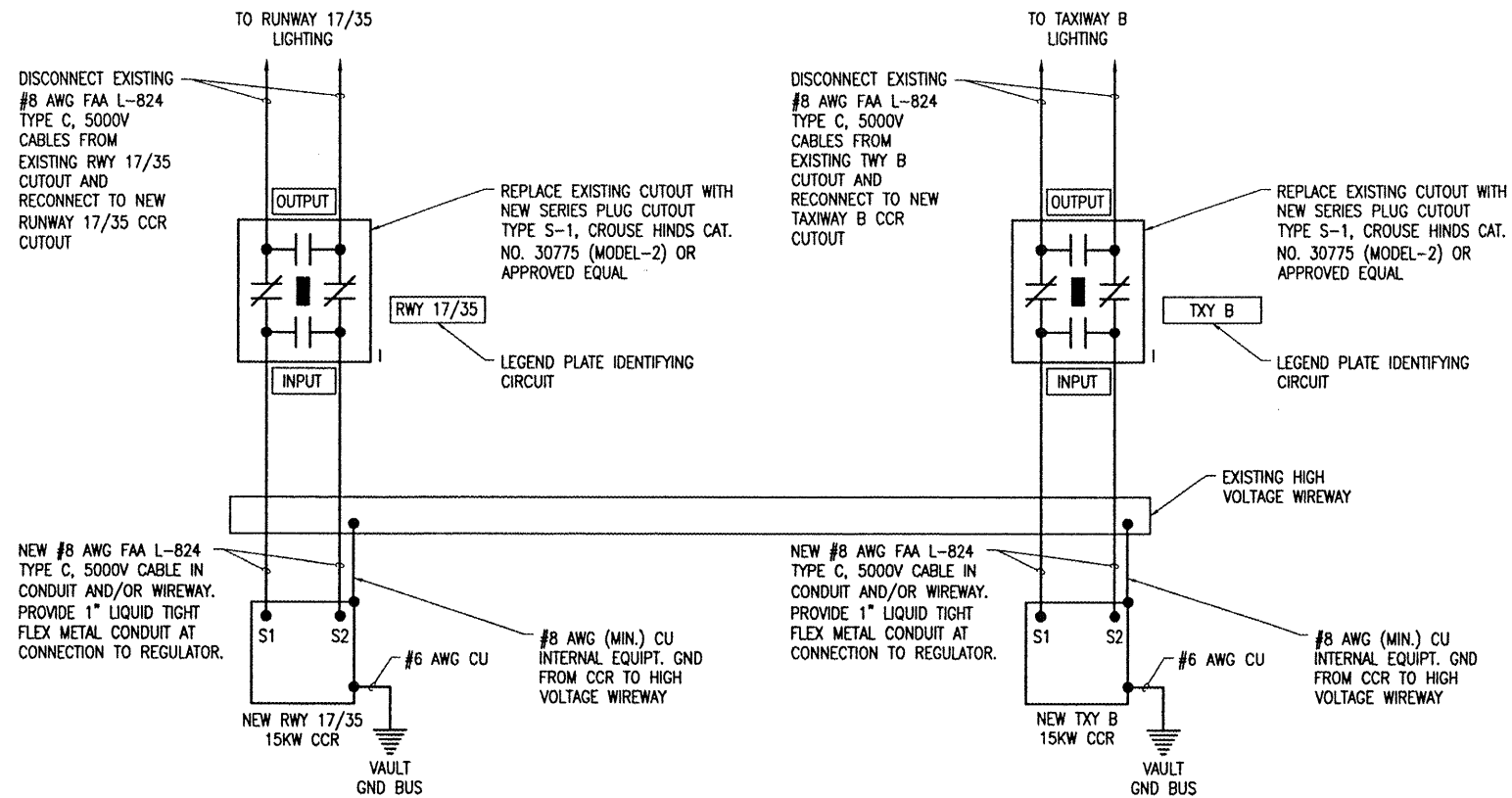


**SERIES PLUG CUTOUT MOUNTING DETAIL**  
 NOT TO SCALE (TYPICAL FOR TAXIWAY B CCR & RUNWAY 17/35 CCR)



PROVIDE WARNING SIGN ON EACH VAULT ROOM DOOR LABELED "DANGER - HIGH VOLTAGE - KEEP OUT" PER THE REQUIREMENTS OF NEC 110.34 (C). (PROVIDE 2 WARNING SIGNS).



**HIGH VOLTAGE WIRING SCHEMATIC**

**NOTES**

1. PROVIDE PHENOLIC ENGRAVED LEGEND PLATES FOR NEW CONSTANT CURRENT REGULATORS NOTING THE RESPECTIVE RUNWAY/TAXIWAY SERVED.
2. THE NEW PLUG CUTOUT SHALL BE FURNISHED WITH A PHENOLIC ENGRAVED LEGEND PLATE THAT IDENTIFIES THE RESPECTIVE RUNWAY/TAXIWAY CIRCUIT OR REGULATOR. INCLUDE AN ADDITIONAL LEGEND PLATE LABELED "CAUTION OPERATE CUTOUTS WITH CCR SHUT OFF".
3. PROVIDE ADEQUATE WORKING SPACE IN FRONT OF EACH CUTOUT ENCLOSURE TO MEET NEC CLEARANCE REQUIREMENTS.
4. LIQUID TIGHT FLEXIBLE METAL CONDUIT AND ASSOCIATED FITTINGS SHALL BE U.L. LISTED TO MEET THE REQUIREMENTS OF NEC 350.6, SUITABLE FOR GROUNDING AND SUNLIGHT RESISTANT. LIQUID TIGHT FLEXIBLE METAL CONDUIT THAT IS USED FOR FLEXIBILITY (INCLUDING CONNECTIONS TO CCR'S & TRANSFORMERS) SHALL REQUIRE AN EXTERNAL BONDING JUMPER OR INTERNAL EQUIPMENT GROUNDING CONDUCTOR PER NEC 350.60. EXTERNAL BONDING JUMPERS USED WITH CCR INSTALLATIONS SHALL BE #6 AWG COPPER (MINIMUM). DO NOT INSTALL LIQUID TIGHT FLEXIBLE METAL CONDUIT THAT IS NOT UL LISTED.
5. CROUSE-HINDS CAT. NO. 30771, (MODEL-3) SERIES PLUG CUTOUTS ARE NOT ACCEPTABLE, BECAUSE THE HANDLE IS NOT REMOVABLE. OTHER CUTOUTS THAT DO NOT FUNCTION THE SAME AS CROUSE-HINDS CAT. NO. 30775 (MODEL-2) ARE NOT ACCEPTABLE.
6. HIGH VOLTAGE & LOW VOLTAGE CIRCUITS SHALL NOT BE INSTALLED IN THE SAME WIREWAY.

**LEGEND**

- "I" DENOTES PLUG CUTOUT WITH PLUG INSERTED
- "P" DENOTES PLUG CUTOUT WITH PLUG PULLED
- "CCR" DENOTES CONSTANT CURRENT REGULATOR

BY	
REVISION	
DATE	

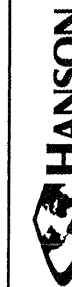
ST. LOUIS REGIONAL AIRPORT



EAST ALTON, ILLINOIS

IL. PROJ.: ALN-3825 A.I.P. PROJ.: 3-17-0002-B42

ILL. Project No. 83706RWYD.0800			
Filename E-602.DWG			
Scale NOT TO SCALE			
Date 07/09/08			
LAYOUT	PJC/KNL	06/18/08	
DRAWN	PJC	06/18/08	
REVIEWED	KNL/CAH	07/17/08	



Hanson Professional Services, Inc.  
 1525 South Sixth Street  
 Springfield, Illinois 62703-2896  
 Offices Nationwide

RUNWAY SAFETY AREA IMPROVEMENTS

HIGH VOLTAGE WIRING SCHEMATIC