

STATE OF ILLINOIS  
DEPARTMENT OF TRANSPORTATION  
DIVISION OF HIGHWAYS

F.A.U. RTE.	SECTION	COUNTY	TOTAL SHEETS	SHEET NO.
2744	113HB-BR-1	LAKE	7	1
		ILLINOIS	CONTRACT NO. 60Y43	

FOR INDEX OF SHEETS, SEE SHEET NO. 2

THIS IMPROVEMENT IS LOCATED IN THE VILLAGE OF LAKE BLUFF.

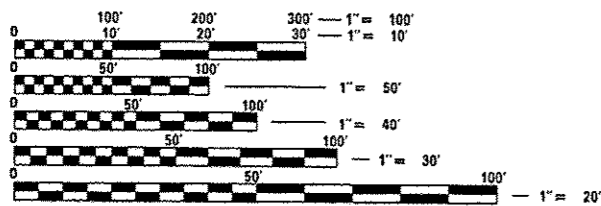
TRAFFIC DATA

2011 ADT=9150  
SPEED LIMIT=35 MPH

PROPOSED  
HIGHWAY PLANS

FAU ROUTE 2744: SHERIDAN ROAD  
OVER SCRANTON AVE (SN: 049-0039)  
SECTION 113HB-BR-1  
RETAINING WALL REPAIRS  
LAKE COUNTY

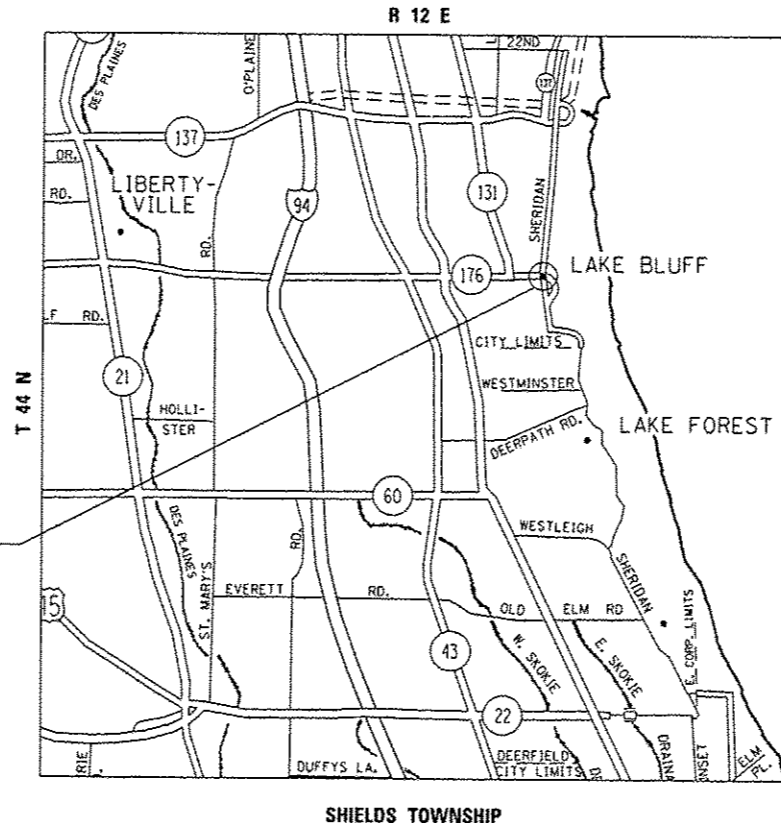
C-91-382-14



FULL SIZE PLANS HAVE BEEN PREPARED USING STANDARD ENGINEERING SCALES. REDUCED SIZED PLANS WILL NOT CONFORM TO STANDARD SCALES. IN MAKING MEASUREMENTS ON REDUCED PLANS, THE ABOVE SCALES MAY BE USED.

J.U.L.I.E.  
JOINT UTILITY LOCATION INFORMATION FOR EXCAVATION  
1-800-892-0123  
OR 811

LOCATION OF IMPROVEMENT  
SN: 049-0039



PROJECT ENGINEER: ALAIN MIDY (847) 221-3056  
PROJECT MANAGER: ISSAM RAYYAN (847) 705-4178

CONTRACT NO. 60Y43

GROSS LENGTH=43 FT.=0.008 MILE  
NET LENGTH=43 FT.=0.008 MILE

STATE OF ILLINOIS  
DEPARTMENT OF TRANSPORTATION  
DIVISION OF HIGHWAYS

SUBMITTED October 23 2014

John F. [Signature]  
DEPUTY DIRECTOR OF HIGHWAYS, REGION ENGINEER

Mar 20 2015  
John D. Baranzelli, P.E.  
ENGINEER OF DESIGN AND ENVIRONMENT

Mar 20 2015  
Omer Osman, P.E.  
DIRECTOR OF HIGHWAYS, CHIEF ENGINEER

PRINTED BY THE AUTHORITY  
OF THE STATE OF ILLINOIS

**INDEX OF SHEETS**

- 1 COVER SHEET
- 2 INDEX OF SHEETS, STATE STANDARDS & GENERAL NOTES
- 3 SUMMARY OF QUANTITIES
- 4-5 SUBSTRUCTURE REPAIR PLANS
- 6 TRAFFIC CONTROL AND PROTECTION FOR SIDE ROADS, INTERSECTIONS, AND DRIVEWAYS (TC-10)
- 7 ARTERIAL ROAD INFORMATION SIGN (TC-22)

**STATE STANDARDS**

- 000001-06 STANDARD SYMBOLS, ABBREVIATIONS AND PATTERNS
- 001001-02 AREAS OF REINFORCEMENT BARS
- 701101-04 OFF-RD OPERATIONS, MULTILANE, 15' TO 24' FROM PAVEMENT EDGE
- 701501-06 URBAN LANE CLOSURE, 2L, 2W, UNDIVIDED
- 701801-05 SIDEWALK, CORNER OR CROSSWALK CLOSURE
- 701901-04 TRAFFIC CONTROL DEVICES

**GENERAL NOTES**

BEFORE STARTING ANY EXCAVATION, THE CONTRACTOR SHALL CALL "JULIE" AT (800) 892-0123 OR 811 FOR FIELD LOCATIONS OF BURIED ELECTRIC, TELEPHONE, AND GAS FACILITIES. (48 HOUR NOTIFICATION REQUIRED).

THE CONTRACTOR SHALL COORDINATE CONSTRUCTION ACTIVITIES WITH UTILITY COMPANIES AND THE VILLAGE OF LAKE BLUFF.

THE CONTRACTOR WILL NOT BE ABLE TO SET UP A YARD OR FIELD OFFICE ON STATE PROPERTY WITHOUT THE WRITTEN PERMISSION OF THE DEPARTMENT.

PLAN DIMENSIONS AND DETAILS RELATIVE TO EXISTING PLANS ARE SUBJECT TO NOMINAL CONSTRUCTION VARIATIONS. THE CONTRACTOR SHALL FIELD VERIFY EXISTING DIMENSIONS AND DETAILS AFFECTING NEW CONSTRUCTION AND MAKE NECESSARY APPROVED ADJUSTMENTS PRIOR TO CONSTRUCTION OR ORDERING OF MATERIALS. SUCH VARIATIONS SHALL NOT BE CAUSE FOR ADDITIONAL COMPENSATION FOR A CHANGE IN SCOPE OF THE WORK, HOWEVER, THE CONTRACTOR WILL BE PAID FOR THE QUANTITY ACTUALLY FURNISHED BASED AT THE UNIT PRICE BID FOR THE WORK.

THE CONTRACTOR SHALL CONTACT THE DISTRICT ONE TRAFFIC CONTROL SUPERVISOR AT (847) 705-4470 A MINIMUM OF 72 HOURS IN ADVANCE OF BEGINNING WORK.

THESE PLANS HAVE BEEN PREPARED FROM NOTES RECEIVED FROM THE BUREAU OF MAINTENANCE BRIDGE INSPECTORS.

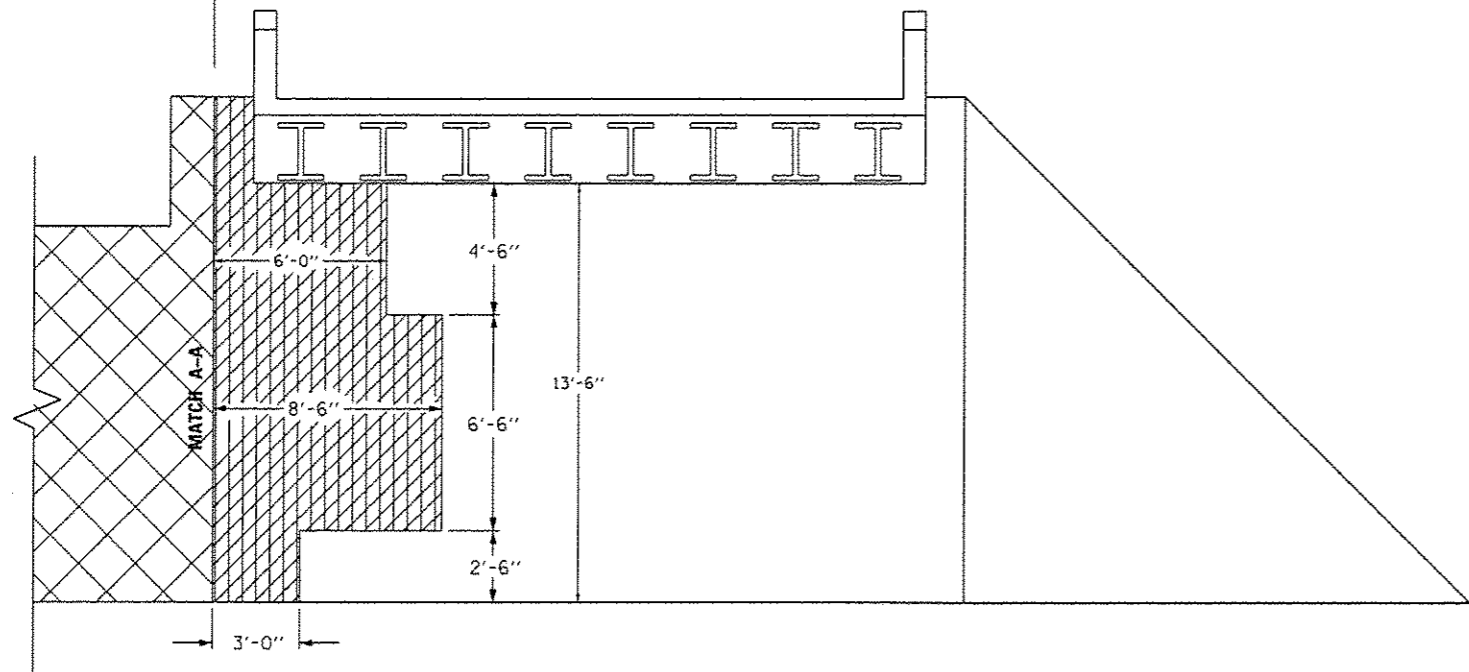
DO NOT SCALE PLANS FOR CONSTRUCTION DIMENSIONS.

FILE NAME :	USER NAME :	DESIGNED :	REVISED :	<b>STATE OF ILLINOIS DEPARTMENT OF TRANSPORTATION</b>	<b>SHERIDAN ROAD OVER IL 176 (SN: 049-0039) INDEX OF SHEETS, STATE STANDARDS, &amp; GENERAL NOTES</b>	F.A.U. RTE.	SECTION	COUNTY	TOTAL SHEETS	SHEET NO.	
c:\p\work\p\ridot\razeqm\0406260\DI30214-shi-plan.dgn	razeqm	DRAWN :	REVISED :			2744	113HB-BR-1	LAKE	7	2	
PLOT SCALE :	CHECKED :	REVISOR :	REVISOR :			SCALE: N/A		SHEET 1 OF 1 SHEETS		STA. TO STA.	CONTRACT NO. 60Y43
Default	PLOT DATE :	DATE :	DATE :			ILLINOIS FED. AID PROJECT					



STRUCTURAL REPAIR OF CONCRETE > 5"  
CONCRETE STRUCTURES

STRUCTURAL REPAIR OF CONCRETE ≤ 5"

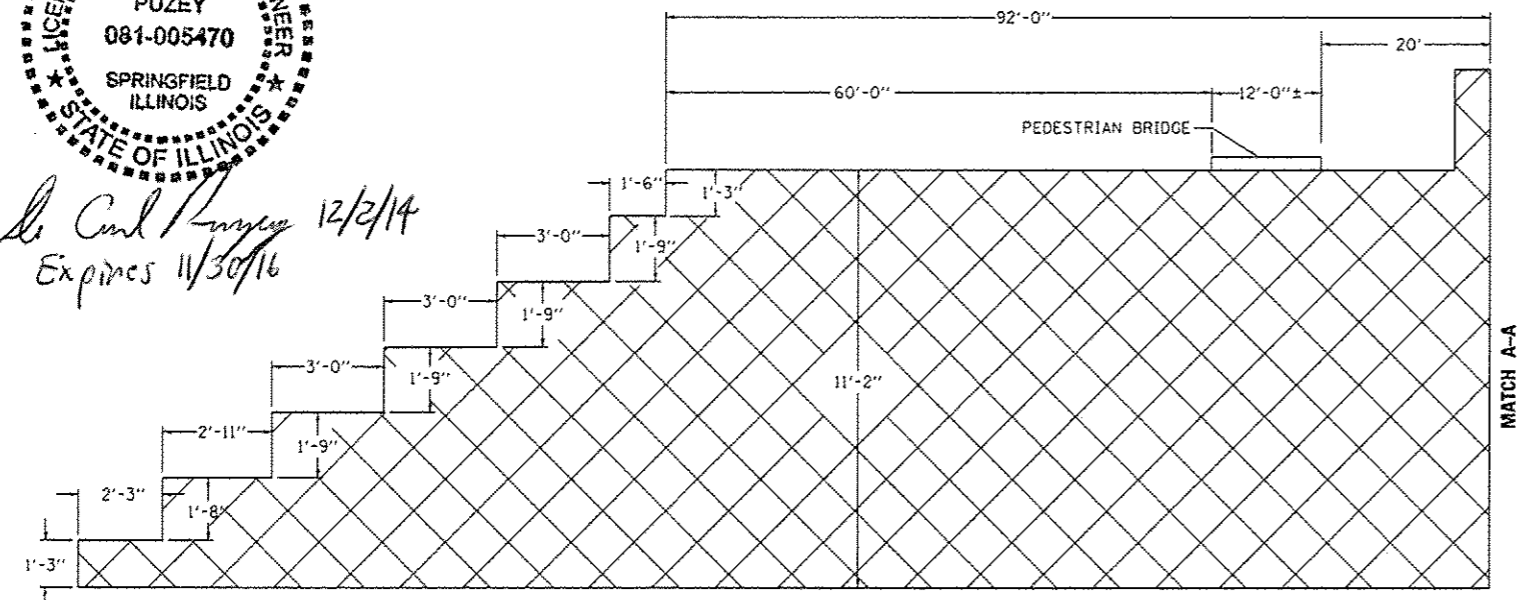


**NORTH ABUTMENT**

STRUCTURAL REPAIR OF CONCRETE ≤ 5"

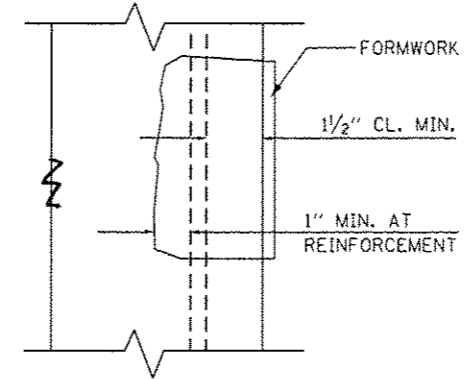


*David Carl Puzey 12/2/14*  
*Expires 11/30/16*



**NORTH ABUTMENT (CONTINUED)**

STRUCTURAL REPAIR OF CONCRETE > 5"



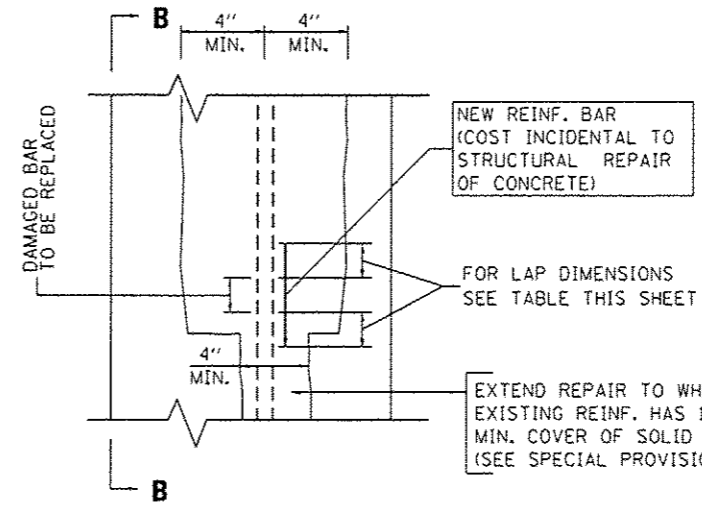
**SECTION B-B**

**NOTE:**

EXISTING REINFORCEMENT HAVING 10% OR MORE OF CROSS SECTIONAL AREA LOST DUE TO CORROSION OR DAMAGED DURING CONCRETE REMOVAL SHALL BE REPLACED BY NEW REINFORCEMENT LAPPED AS SHOWN OR NOTED.

**LAP DIMENSIONS**

BAR SIZE	LAP LENGTH
#4	1' - 8"
#5	2' - 2"
#6	2' - 7"
#7	3' - 5"
#8	4' - 6"



**FRONT VIEW**

**FORMED CONCRETE REPAIR DETAIL WITH REINFORCEMENT**

**LEGEND**

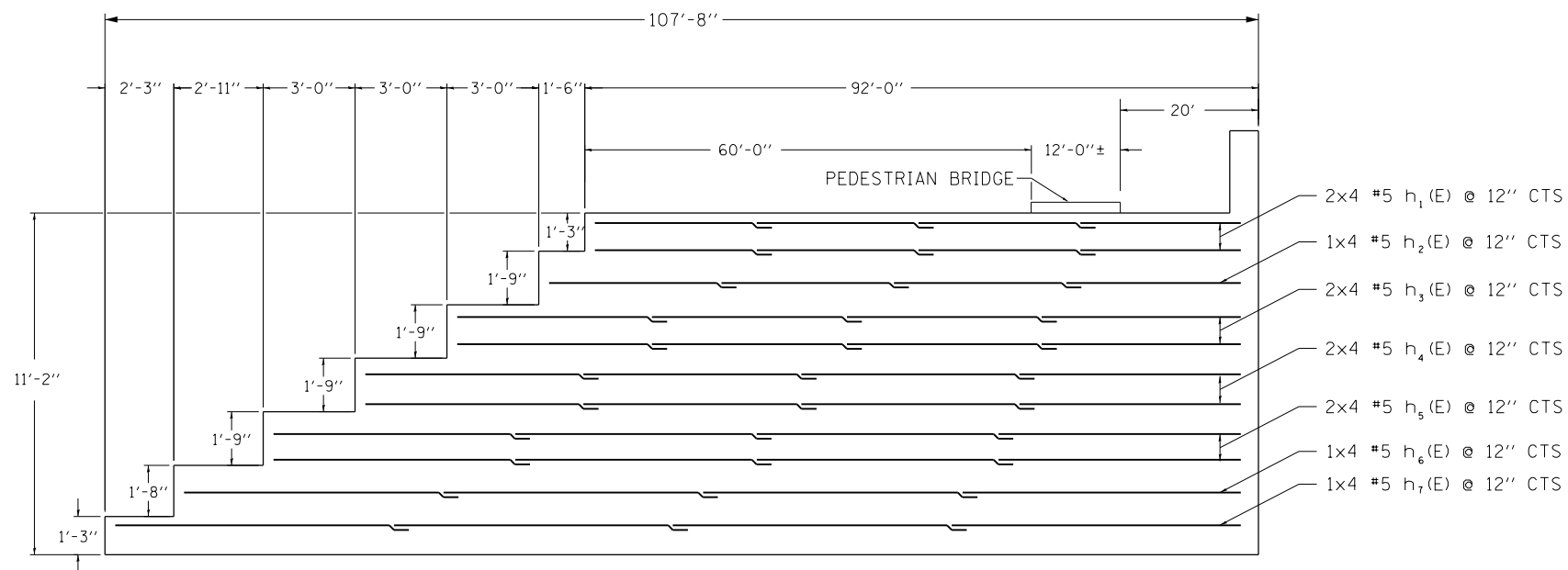
- STRUCTURAL REPAIR OF CONCRETE ≤ 5"
- STRUCTURAL REPAIR OF CONCRETE > 5" CONCRETE STRUCTURES

**NOTE:**

CONCRETE STRUCTURES SHALL USE THE SAME MATERIAL AND BE POURED AT THE SAME TIME AS THE STRUCTURAL REPAIR OF CONCRETE > 5".

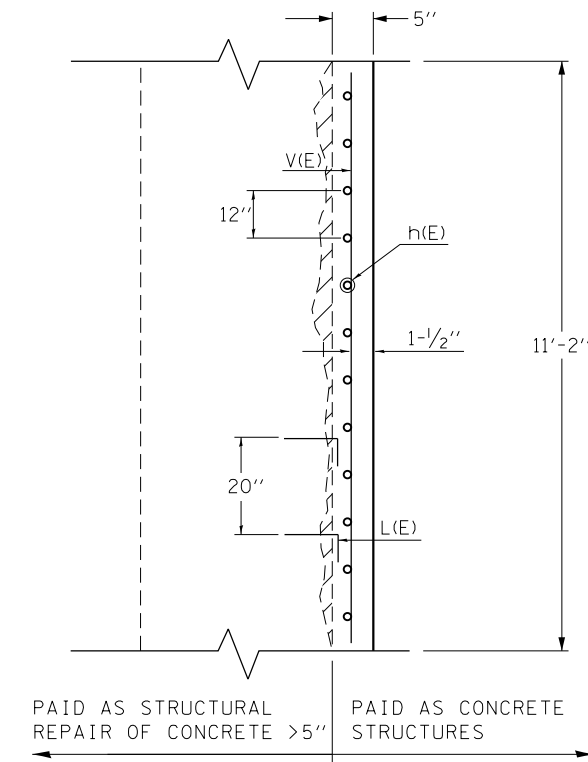
**TOTAL BILL OF MATERIALS**

ITEM	UNIT	QUANTITY
REINFORCEMENT BARS (EPOXY COATED)	LBS	3010
STRUCTURAL REPAIR OF CONCRETE ≤ 5"	SQ FT	91
STRUCTURAL REPAIR OF CONCRETE > 5"	SQ FT	1175
CONCRETE STRUCTURES	CU YD	18.13
PROTECTIVE COAT	SQ YD	141



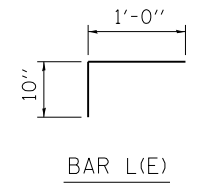
**NORTH ABUTMENT ELEVATION**

HORIZONTAL REINFORCEMENT BARS



**NORTH ABUTMENT**

CROSS SECTION DETAIL



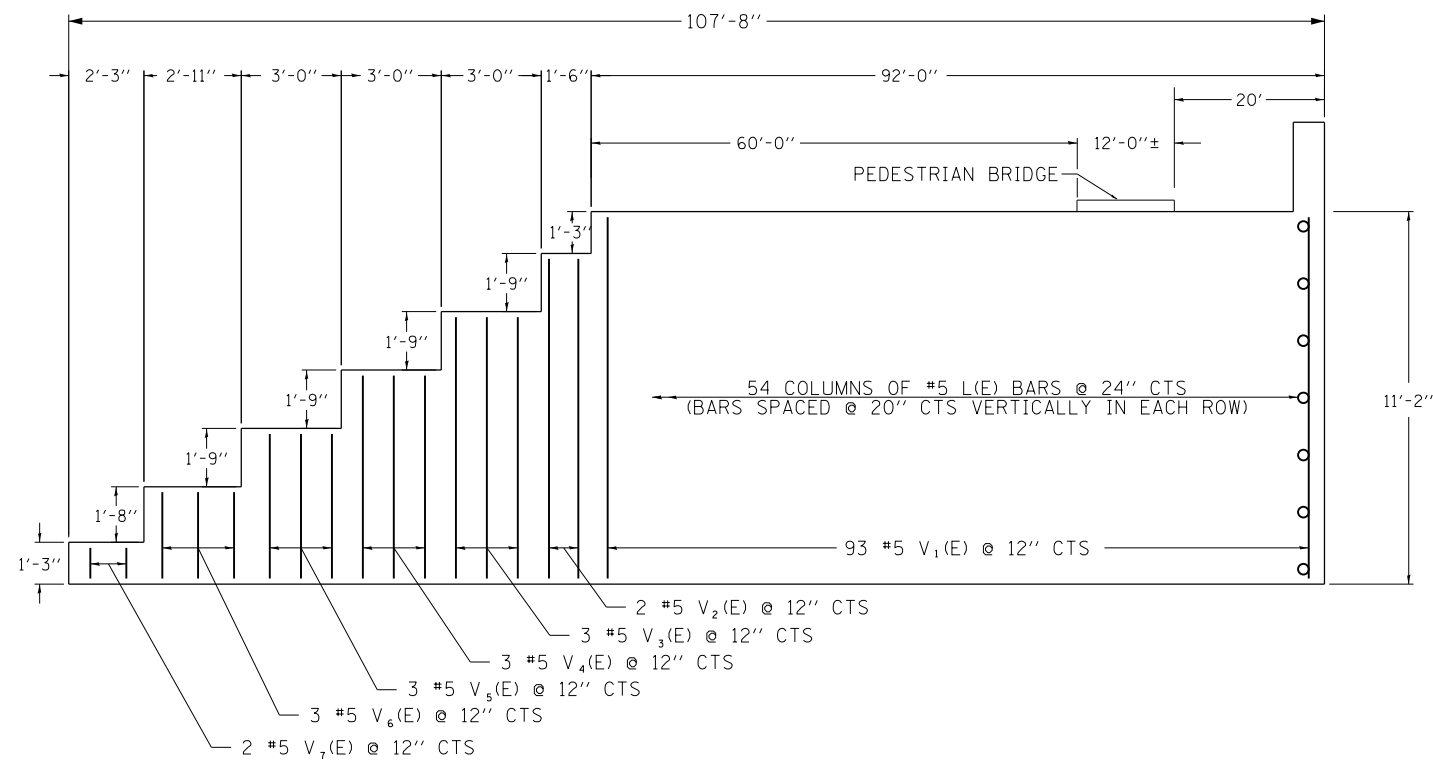
**NOTES:**

#5 L(E) BARS SHALL BE EPOXY GROUTED ACCORDING TO ART. 584 OF THE STANDARD SPECIFICATIONS.

REINFORCEMENT BARS DESIGNATED (E) SHALL BE EPOXY COATED.

**BAR LAP**

BAR SIZE	LAP LENGTH
#5	2' - 2"



**NORTH ABUTMENT ELEVATION**

VERTICAL & LONGITUDINAL REINF. BARS

**BILL OF MATERIALS**

BAR	NO.	SIZE	LENGTH	SHAPE
$h_1(E)$	8	#5	24' - 6 1/2"	—
$h_2(E)$	4	#5	24' - 11"	—
$h_3(E)$	8	#5	25' - 8"	—
$h_4(E)$	8	#5	26' - 5"	—
$h_5(E)$	8	#5	27' - 2"	—
$h_6(E)$	4	#5	27' - 10"	—
$h_7(E)$	4	#5	28' - 5"	—
$V_1(E)$	93	#5	10' - 10"	—
$V_2(E)$	2	#5	9' - 7"	—
$V_3(E)$	3	#5	7' - 10"	—
$V_4(E)$	3	#5	6' - 1"	—
$V_5(E)$	3	#5	4' - 4"	—
$V_6(E)$	3	#5	2' - 7"	—
$V_7(E)$	2	#5	11"	—
L (E)	349	#5	1' - 10"	└┘
REINFORCEMENT BARS. (EPOXY COATED)			LBS	3010
CONCRETE STRUCTURES			CU YD	18.13

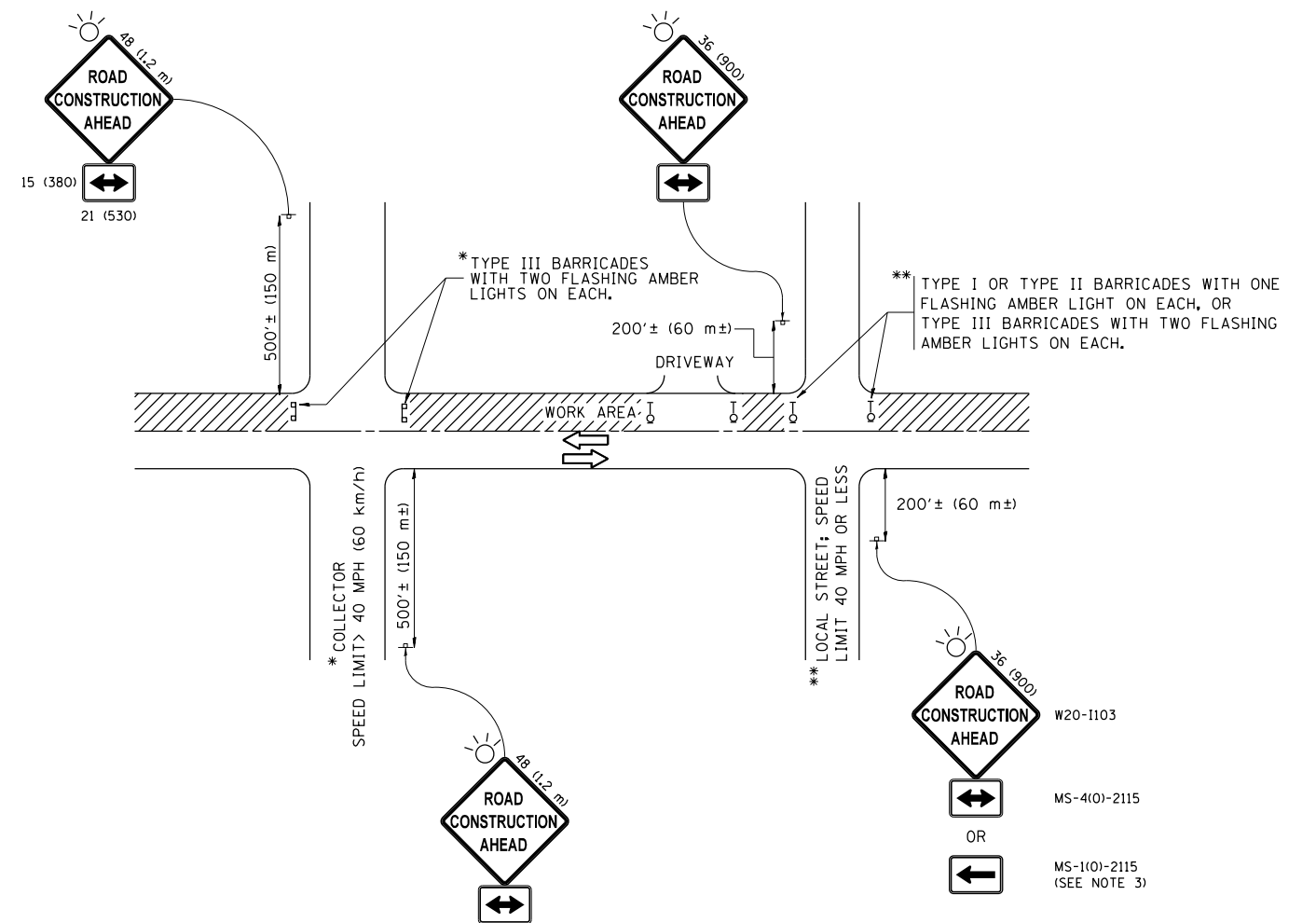
FILE NAME =	USER NAME = razeqem	DESIGNED -	REVISED -
ei:\pw\work\p\midot\razeqem\d0406288\DI38214-sh-t-plan.dgn		DRAWN -	REVISED -
Default	PLOT SCALE = 100.0000' / in.	CHECKED -	REVISED -
	PLOT DATE = 11/5/2014	DATE -	REVISED -

STATE OF ILLINOIS  
DEPARTMENT OF TRANSPORTATION

SHERIDAN ROAD OVER IL 176 (SN: 049-0039)  
SUBSTRUCTURE REPAIR PLANS

SCALE: NTS SHEET 2 OF 2 SHEETS STA. TO STA.

F.A.U. RTE.	SECTION	COUNTY	TOTAL SHEETS	SHEET NO.
2744	113HB-BR-1	LAKE	7	5
CONTRACT NO. 60Y43				
ILLINOIS FED. AID PROJECT				



## TRAFFIC CONTROL AND PROTECTION FOR SIDE ROADS, INTERSECTIONS, AND DRIVEWAYS

### NOTES:

#### A. FOR NO LANE RESTRICTION ON THE SIDE ROAD OR DRIVEWAYS

1. SIDE ROAD WITH A SPEED LIMIT OF 40 MPH (60 km/h) OR LESS AS SHOWN ON THE DRAWING AND AS DIRECTED BY THE ENGINEER:
  - a) ONE **ROAD CONSTRUCTION AHEAD** SIGN 36 x 36 (900x900) WITH A FLASHER ON IT APPROXIMATELY 200' (60 m) IN ADVANCE OF THE MAIN ROUTE.
  - b) THE CLOSED PORTION OF THE MAIN ROUTE SHALL BE PROTECTED BY BLOCKING WITH TYPE I, TYPE II OR TYPE III BARRICADES, 1/3 OF THE CROSS SECTION OF THE CLOSED PORTION.
2. SIDE ROAD WITH A SPEED LIMIT GREATER THAN 40 MPH (60 km/h) AS SHOWN ON THE DRAWING AND AS DIRECTED BY THE ENGINEER:
  - a) ONE **ROAD CONSTRUCTION AHEAD** SIGN 48 x 48 (1.2 m x 1.2 m) WITH A FLASHER MOUNTED ON IT APPROXIMATELY 500' (150 m) IN ADVANCE OF THE MAIN ROUTE.
  - b) THE CLOSED PORTION OF THE MAIN ROUTE SHALL BE PROTECTED BY BLOCKING WITH TYPE III BARRICADES, 1/2 OF THE CROSS SECTION OF THE CLOSED PORTION.
3. WHEN THE SIDE ROAD LIES BETWEEN THE BEGINNING OF THE MAINLINE SIGNING AND THE WORK ZONE, A SINGLE HEADED ARROW (M6-1) SHALL BE USED IN LIEU OF THE DOUBLE HEADED ARROW (M6-4).

#### B. FOR A LANE CLOSURE ON A SIDE ROAD OR DRIVEWAY:

- USE APPLICABLE PORTIONS OF THE TYPICAL APPLICATION OF TRAFFIC CONTROL DEVICES (STD. 701501, STD. 701606 OR THE APPROPRIATE STANDARD). THE SPACING OF SIGNS AND BARRICADES SHALL BE ADJUSTED FOR FIELD CONDITIONS AS DIRECTED BY THE ENGINEER. THE DIRECTIONAL ARROW SHALL BE COVERED OR REMOVED WHEN NO LONGER CONSISTENT WITH THE SIDE ROAD LANE CLOSURE.
- C. ADVANCE WARNING SIGNS ARE TO BE OMITTED ON DRIVEWAY UNLESS OTHERWISE NOTED.
  - D. THE TRAFFIC CONTROL AND PROTECTION FOR SIDE ROADS, INTERSECTIONS, AND DRIVEWAYS SHALL BE INCIDENTAL TO THE COST OF SPECIFIED TRAFFIC CONTROL STANDARDS OR ITEMS.

All dimensions are in millimeters (inches) unless otherwise shown.

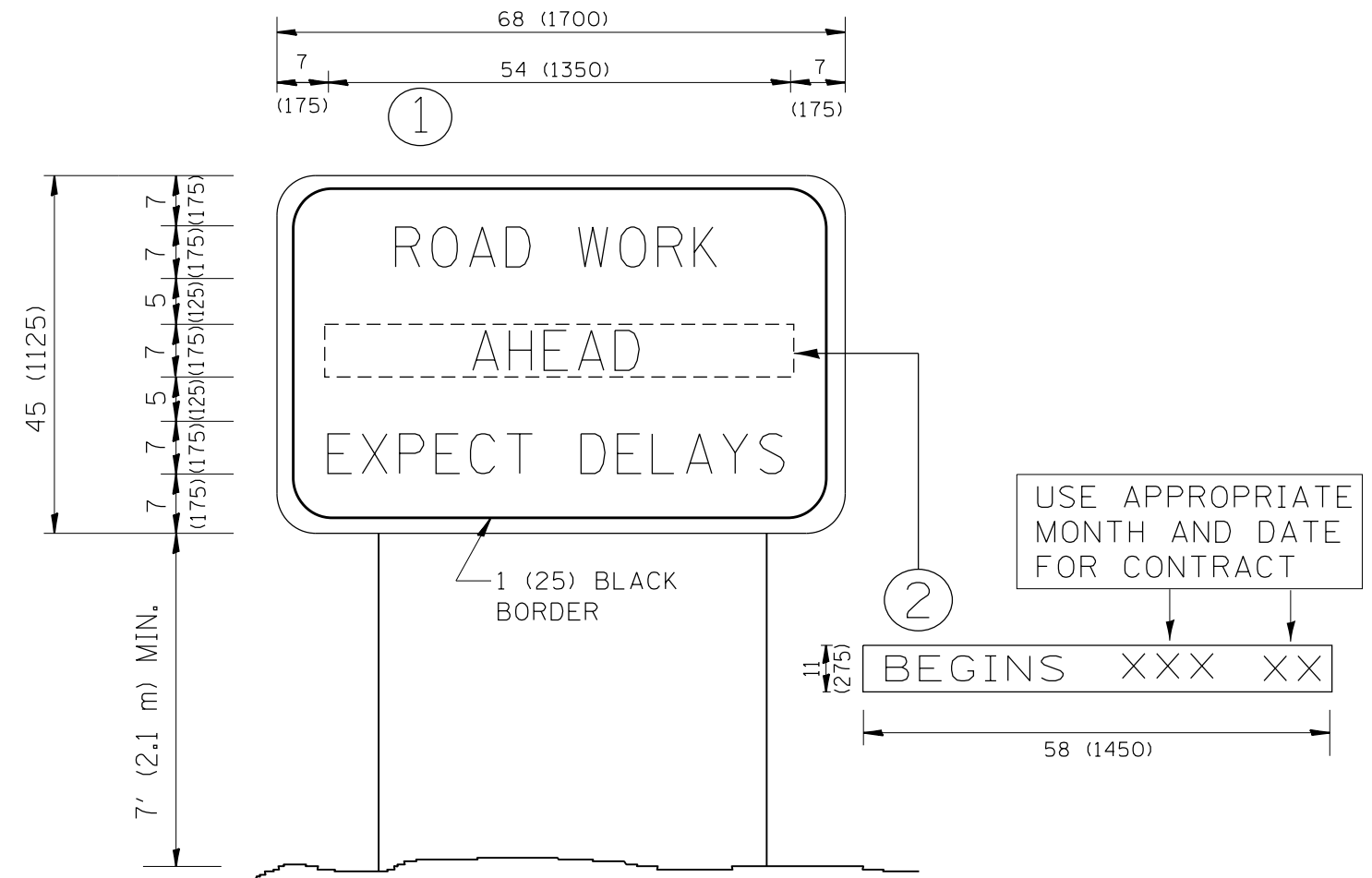
FILE NAME =	USER NAME = razeqem	DESIGNED - LHA	REVISED - J. OBERLE 10-18-95
c:\pwwork\pwwork\razeqem\d0406288\0138214-sh-t-plan.dgn		DRAWN -	REVISED - A. HOUSEH 10-15-96
	PLOT SCALE = 100.0000' / in.	CHECKED -	REVISED - T. RAMMACHER 01-06-00
	PLOT DATE = 11/5/2014	DATE - 06-89	REVISED - A. SCHUETZE 07-01-13

STATE OF ILLINOIS  
DEPARTMENT OF TRANSPORTATION

TRAFFIC CONTROL AND PROTECTION FOR  
SIDE ROADS, INTERSECTIONS, AND DRIVEWAYS

SCALE: NONE SHEET NO. 1 OF 1 SHEETS STA. TO STA.

F.A.U. RTE.	SECTION	COUNTY	TOTAL SHEETS	SHEET NO.
2744	113HB-BR-1	LAKE	7	6
TC-10			CONTRACT NO. 60Y43	
FED. ROAD DIST. NO. 1 ILLINOIS FED. AID PROJECT				



**NOTES:**

1. USE BLACK LETTERING ON ORANGE BACKGROUND.
2. ERECT SIGNS IN ADVANCE OF THE LOCATION FOR THE "ROAD CONSTRUCTION AHEAD" SIGN AT LOCATIONS AS DIRECTED BY THE ENGINEER.
3. ERECT SIGN ① WITH INSTALLED PANEL ② ONE WEEK PRIOR TO THE START OF CONSTRUCTION.
4. REMOVE PANEL ② SOON AFTER THE START OF CONSTRUCTION.
5. SEE SPECIAL PROVISION FOR "TEMPORARY INFORMATION SIGNING" FOR ADDITIONAL INFORMATION.
6. ONE SIGN ASSEMBLY EQUALS 25.70 SQ. FT. (2.3 SQ. M.)
7. SHALL BE PAID FOR AS TEMPORARY INFORMATION SIGNING.

ALL DIMENSIONS ARE IN INCHES (MILLIMETERS) UNLESS OTHERWISE SHOWN.

FILE NAME =	USER NAME = razeqem	DESIGNED -	REVISED - R. MIRS 09-15-97
ct:\pw\work\p1dot\razeqem\d0406288\DI38214-sh1-pln.dgn		DRAWN -	REVISED - R. MIRS 12-11-97
	PLOT SCALE = 100.0000' / in.	CHECKED -	REVISED - T. RAMMACHER 02-02-99
	PLOT DATE = 11/5/2014	DATE -	REVISED - C. JUCIUS 01-31-07

**STATE OF ILLINOIS  
DEPARTMENT OF TRANSPORTATION**

<b>ARTERIAL ROAD INFORMATION SIGN</b>	
SCALE: NONE	SHEET NO. 1 OF 1 SHEETS
STA.	TO STA.

F.A.U. RTE.	SECTION	COUNTY	TOTAL SHEETS	SHEET NO.
2744	113HB-BR-1	LAKE	7	7
TC-22		CONTRACT NO. 60Y43		
FED. ROAD DIST. NO. 1   ILLINOIS FED. AID PROJECT				