

STATE OF ILLINOIS
DEPARTMENT OF TRANSPORTATION
DIVISION OF HIGHWAYS

F.A.U. RTE.	SECTION	COUNTY	TOTAL SHEETS	SHEET NO.
268B	3349-I	COOK	16	1
		ILLINOIS	CONTRACT NO. 62A46	

FOR INDEX OF SHEETS, SEE SHEET NO. 2

FOR LIST OF HIGHWAY STANDARDS, SEE SHEET NO. 2

IMPROVEMENT IS LOCATED IN THE VILLAGE OF ORLAND PARK

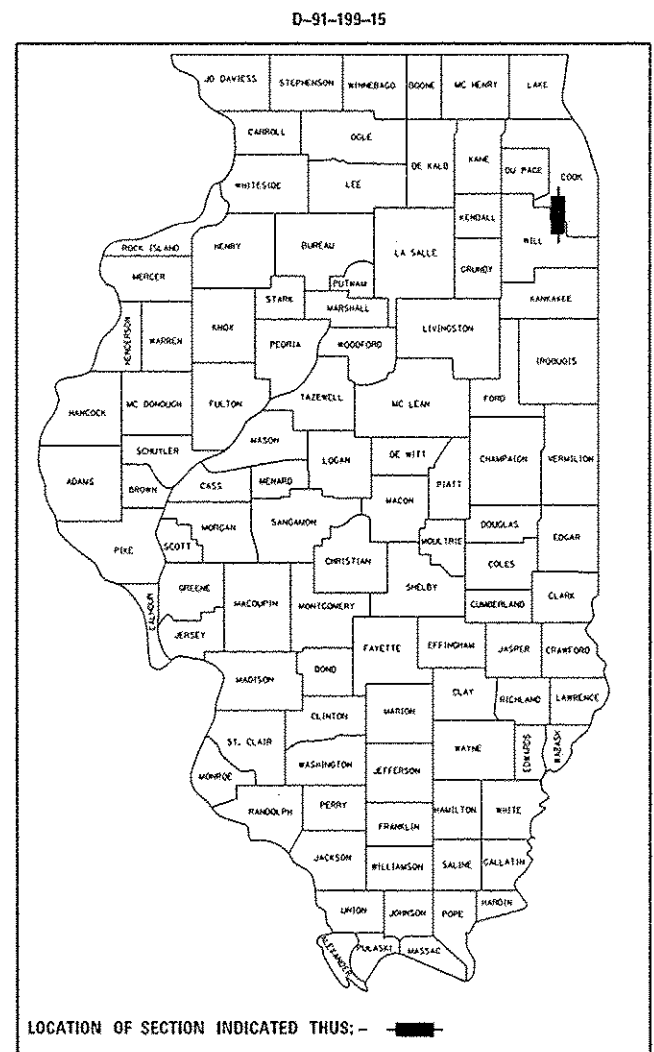
PROPOSED HIGHWAY PLANS

FAU ROUTE 2688: IL 7 (WOLF RD)
OVER DITCH (0.2 MILES SOUTH OF 143RD ST)
SECTION 3349-I
CULVERT REPAIR
COOK COUNTY
C-91-199-15

PROJ. ACM-2688(003)

TRAFFIC DATA

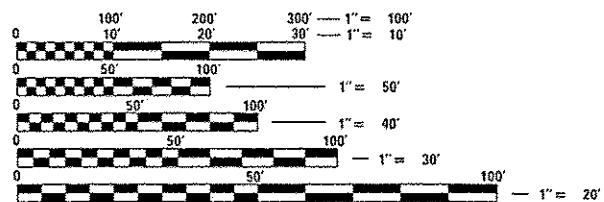
FUNCTIONAL CLASSIFICATION: URBAN MINOR ARTERIAL
2013 ADT = 15600
P.V. = 85.6% S.U. = 11.4% M.U. = 3.0%
POSTED SPEED = 45 MPH
DESIGN SPEED = 45 MPH



LOCATION OF IMPROVEMENT EXISTING SN 016-1340



LOCATION MAP NOT TO SCALE



FULL SIZE PLANS HAVE BEEN PREPARED USING STANDARD ENGINEERING SCALES. REDUCED SIZED PLANS WILL NOT CONFORM TO STANDARD SCALES. IN MAKING MEASUREMENTS ON REDUCED PLANS, THE ABOVE SCALES MAY BE USED.

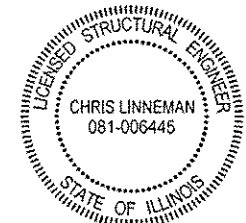
J.U.L.I.E.
JOINT UTILITY LOCATION INFORMATION FOR EXCAVATION
1-800-892-0123
OR 811

PROJECT MANAGER: ISSAM RAYYAN (847) 705-4178
PROJECT ENGINEER: ROBERT BORO (847) 705-4237
CONTRACT NO. 62A46

GROSS LENGTH = 34.00 FT. = 0.006 MILE
NET LENGTH = 34.00 FT. = 0.006 MILE



Signed: [Signature]
Date: 2/12/2015
License Expires: 11/30/2015
The seal shown above is valid for Sheets 1-10.



Signed: [Signature]
Date: 2/11/2015
License Expires: 11/30/2016
The seal shown above is valid for Sheets 11-16.

EFK Moen, LLC
Civil Engineering Design
125 South Wacker Dr, Suite 2090
Chicago, IL 60606
Phone 312-396-4065

STATE OF ILLINOIS
DEPARTMENT OF TRANSPORTATION
DIVISION OF HIGHWAYS

SUBMITTED February 20, 2015

[Signature]
DEPUTY DIRECTOR OF HIGHWAYS, REGION ENGINEER

Mar 20, 2015
[Signature]
ENGINEER OF DESIGN AND ENVIRONMENT

Mar 20, 2015
[Signature]
DIRECTOR OF HIGHWAYS, CHIEF ENGINEER

PRINTED BY THE AUTHORITY OF THE STATE OF ILLINOIS

INDEX OF SHEETS

- 1 COVER SHEET
- 2 INDEX OF SHEETS, LIST OF IDOT HIGHWAY STANDARDS, GENERAL NOTES, AND COMMITMENTS
- 3-4 SUMMARY OF QUANTITIES
- 5 TYPICAL SECTIONS
- 6 SCHEDULES AND TIES
- 7 ROADWAY PLANS
- 8 DETOUR ROUTE
- 9 SIGNING DETAILS
- 10 EROSION AND SEDIMENT CONTROL PLANS
- 11-14 STRUCTURAL PLANS
- 15-16 SOIL BORING LOGS

LIST OF IDOT HIGHWAY STANDARDS

- 280001-07 TEMPORARY EROSION CONTROL SYSTEMS
- 442201-03 CLASS D PATCHES
- 630001-10 STEEL PLATE BEAM GUARDRAIL
- 701001-02 OFF-RD OPERATIONS, 2L, 2W, MORE THAN 15' (4.5M) AWAY
- 701006-05 OFF-RD OPERATIONS, 2L, 2W, 15' (4.5M) TO 24" (600mm) FROM PAVEMENT EDGE
- 701201-04 LANE CLOSURE, 2L, 2W, DAY ONLY, FOR SPEEDS >45 MPH
- 701301-04 LANE CLOSURE, 2L, 2W, SHORT TIME OPERATIONS
- 701901-04 TRAFFIC CONTROL DEVICES

GENERAL NOTES

1. BEFORE STARTING ANY EXCAVATION, THE CONTRACTOR SHALL CALL "J.U.L.I.E." AT (800) 892-0123 OR 811 FOR FIELD LOCATIONS OF BURIED ELECTRIC, TELEPHONE, AND GAS UTILITIES. 48 HOUR NOTIFICATION IS REQUIRED.
2. NOTIFY VILLAGE AT LEAST 48 HOURS IN ADVANCE OF CONSTRUCTION.
3. THE CONTRACTOR WILL NOT BE ALLOWED TO SET UP A YARD OR FIELD OFFICE ON STATE PROPERTY WITHOUT WRITTEN PERMISSION FROM THE DEPARTMENT.
4. BEFORE BEGINNING ANY WORK, THE CONTRACTOR SHALL RETAIN AND RECORD, FOR FUTURE REFERENCE, ALL EXISTING PAVEMENT MARKING LINES (AND RAISED REFLECTIVE PAVEMENT MARKERS) IN ORDER THAT THESE LOCATIONS CAN BE RE-ESTABLISHED FOR STRIPING. EXACT LOCATIONS OF ALL PAVEMENT MARKINGS SHALL BE AS DIRECTED BY THE ENGINEER.
5. IT IS THE CONTRACTOR'S RESPONSIBILITY TO VERIFY ALL DIMENSIONS AND CONDITIONS EXISTING IN THE FIELD PRIOR TO CONSTRUCTION AND ORDERING OF MATERIALS.
6. THE CONTRACTOR SHALL CONTACT THE DISTRICT ONE TRAFFIC CONTROL SUPERVISOR AT (847) 705-4470 A MINIMUM OF 72 HOURS IN ADVANCE OF BEGINNING WORK.
7. THE CONTRACTOR SHALL CONTACT PATRICE HARRIS, AREA TRAFFIC FIELD TECHNICIAN, AT (708) 597-9800 A MINIMUM OF TWO (2) WEEKS PRIOR TO THE PLACEMENT OF PERMANENT PAVEMENT MARKINGS.
8. THESE PLANS HAVE BEEN PREPARED FROM NOTES RECEIVED FROM THE BUREAU OF MAINTENANCE.
9. THE CONTRACTOR IS REQUIRED TO PROVIDE ACCESS TO ABUTTING PROPERTY AT ALL TIMES DURING THE CONSTRUCTION OF THIS PROJECT.
10. DO NOT SCALE PLANS FOR CONSTRUCTION DIMENSIONS.
11. THE DEPARTMENT HAS DETERMINED THAT IN STREAM WORK IS NOT REQUIRED FOR THE WORK SPECIFIED IN THIS CONTRACT. THE DEPARTMENT HAS NOT OBTAINED A 404 PERMIT. IF THE CONTRACTOR CHOOSES TO USE ACTIVITIES REQUIRING AN USAGE 404 PERMIT, IT IS THE CONTRACTOR'S RESPONSIBILITY TO SECURE THE PROPER USAGE PERMITS.
12. PROJECT BENCHMARK - TBM "A" ELEVATION = 711.41
CUT SQUARE ON TOP BACK OF CURB AT NORTH END OF NORTH RADIUS RETURN FOR ENTRANCE TO ALEXIS SUBDIVISION, LOCATED APPROXIMATELY 800 FEET SOUTH OF INTERSECTION OF WOLF ROAD AND 143RD STREET.
13. ROW IS BASED ON CENTER OF ROADWAY. A DETAILED ROW SURVEY WAS NOT PERFORMED. ROW SHOULD BE VERIFIED BEFORE START OF CONSTRUCTION.
14. EARTH EXCAVATION PAY ITEM INCLUDES PLACING AND COMPACTING EMBANKMENT AND LEGAL OFFSITE DISPOSAL OF EXCESS MATERIAL.
15. EXCAVATION REQUIRED TO REMOVE THE EXISTING CULVERT WILL BE PAID AS EARTH EXCAVATION TO THE LIMITS SHOWN ON ROADWAY PLAN DETAIL A-A.
16. GRANULAR CULVERT BACKFILL SHALL BE CA-7 GRADATION.

COMMITMENTS

NONE.

FILE NAME :	USER NAME : marnock	DESIGNED - JH	REVISED -	STATE OF ILLINOIS DEPARTMENT OF TRANSPORTATION	GENERAL NOTES AND COMMITMENTS	F.A.U. RTE.	SECTION	COUNTY	TOTAL SHEETS	SHEET NO.
Y:\13053 100T D1 W03 IL7\00\Design\Prj\1\Plotsheets\162046-shr-gennote.dgn	DRAWN - MW	REVISION -	2688			3349-1	COOK	16	2	
PLOT SCALE = 100.0000' / 1"	CHECKED - PJK	REVISION -	CONTRACT NO. 62A46							
Default	DATE - 2/20/2015	REVISION -	SCALE:			SHEET OF	SHEETS STA.	TO STA.	ILLINOIS FED. AID PROJECT	

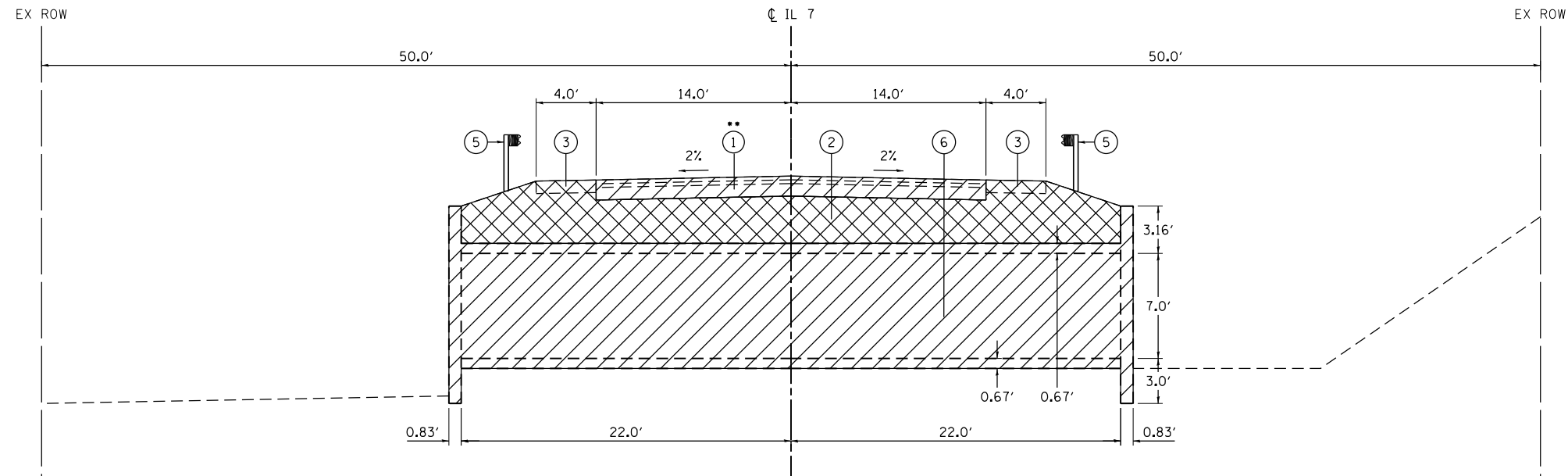
URBAN
 CONSTR. CODE
 80% FED.
 20% STATE
 ROADWAY
 0040
 URBAN

CODE NO.	ITEM	UNIT	TOTAL QUANTITY	
* X7010216	TRAFFIC CONTROL AND PROTECTION, (SPECIAL)	L SUM	1	1
* Z0013798	CONSTRUCTION LAYOUT	L SUM	1	1
* Z0023602	GRANULAR CULVERT BACKFILL	CU YD	238	238
* Z0030850	TEMPORARY INFORMATION SIGNING	SO FT	69	69

4

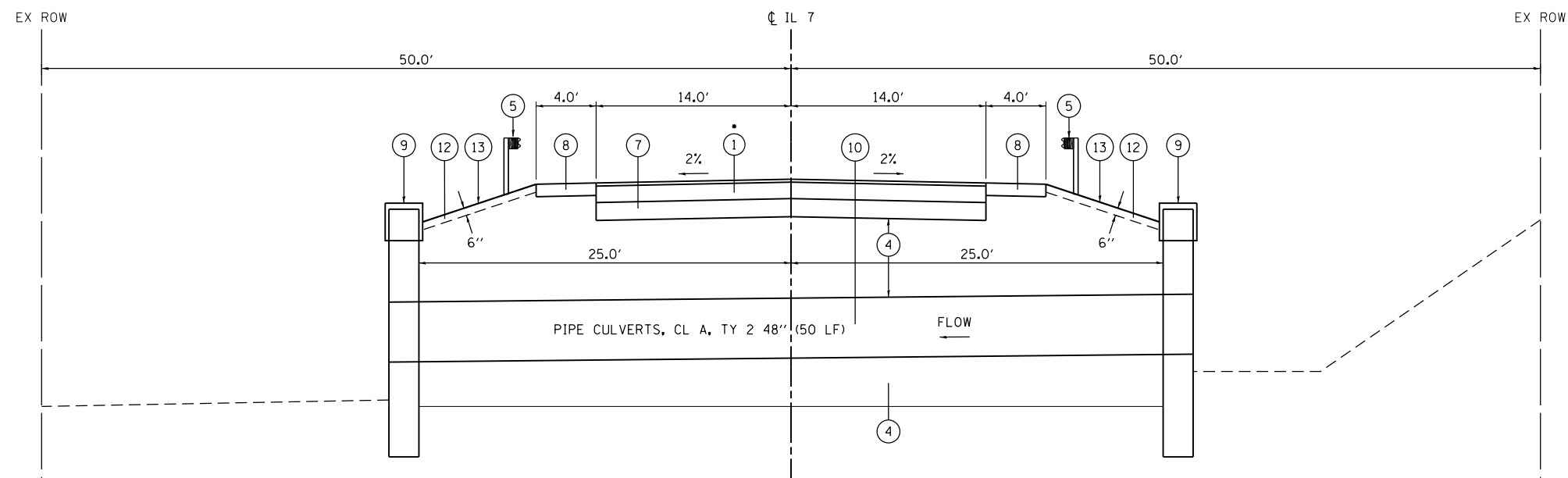
* SPECIAL PROVISION REQUIRED.

FILE NAME =	USER NAME = mwarneck	DESIGNED - JH	REVISED -	STATE OF ILLINOIS DEPARTMENT OF TRANSPORTATION	SUMMARY OF QUANTITIES				F.A.U. RTE.	SECTION	COUNTY	TOTAL SHEETS	SHEET NO.
T:\13053 1007 01 W03 (L\DD\Design\Pre) m\PlotSheets\0162446-sh1-5002.dgn	DRAWN - MW	REVISIED -	REVISED -						2608	3349-1		16	4
Default	PLOT SCALE = 100.0000' / 1" =	CHECKED - PJK	REVISED -		CONTRACT NO, 62A46				ILLINOIS FED. AID PROJECT				
	PLOT DATE = 2/23/2015	DATE - 2/20/2015	REVISED -		SCALE:	SHEET	OF	SHEETS	STA.	TO STA.			



EXISTING TYPICAL SECTION
(LOOKING NORTH)

- SEE MIXTURES TABLE SHEET NO. 6.
- SEE SOIL BORING LOGS FOR EXISTING PAVEMENT THICKNESS.



PROPOSED TYPICAL SECTION
(LOOKING NORTH)

LEGEND

- | | | |
|--|--|--|
| ① CLASS D PATCHES, TYPE IV, 13 INCH (44201809, SQ YD) | ⑦ AGGREGATE SUBGRADE IMPROVEMENT 12" (30300112, SQ YD) | ⑬ SEEDING, CLASS 2A (25000210, ACRE) |
| ② EARTH EXCAVATION (20200100, CU YD) | ⑧ AGGREGATE SHOULDERS, TYPE A 8" (48100700, SQ YD) | ⑭ TREE REMOVAL (OVER 15 UNITS DIAMETER) (20100210, UNIT) |
| ③ REMOVE EXISTING AGGREGATE SHOULDER (PAID AS EARTH EXCAVATION) | ⑨ SHEET PILING RETAINING WALL (SEE STRUCTURAL PLANS) | ⑮ INLET AND PIPE PROTECTION (28000500, EACH) |
| ④ GRANULAR CULVERT BACKFILL (Z0023602, CU YD) | ⑩ PIPE CULVERTS, CLASS A, TYPE 2 48" (542A1093, LF) | |
| ⑤ REMOVE AND REERECT STEEL PLATE BEAM GUARDRAIL, TYPE A (63301210, LF) | ⑪ PERIMETER EROSION BARRIER (28000400, FOOT) | |
| ⑥ CONCRETE REMOVAL (50102400, CY YD) | ⑫ TOPSOIL FURNISH AND PLACE, 6" (21101625, SQ YD) | |

NOT TO SCALE

FILE NAME =	USER NAME = mwarnock	DESIGNED - JH	REVISED -
Y:\13853 IDOT D1 W03 IL7\DDN\Design\Pre1	m\Plotsheets\162446-sht-typical.dgn	DRAWN - MW	REVISED -
Default	PLOT SCALE = 100.0000' / in.	CHECKED - PJK	REVISED -
	PLOT DATE = 2/23/2015	DATE - 2/20/2015	REVISED -

STATE OF ILLINOIS
DEPARTMENT OF TRANSPORTATION

TYPICAL SECTIONS

SCALE: SHEET OF SHEETS STA. TO STA.

F.A.U. RTE.	SECTION	COUNTY	TOTAL SHEETS	SHEET NO.
2688	3349-1	COOK	16	5
CONTRACT NO. 62A46				
ILLINOIS FED. AID PROJECT				

EARTHWORK QUANTITIES

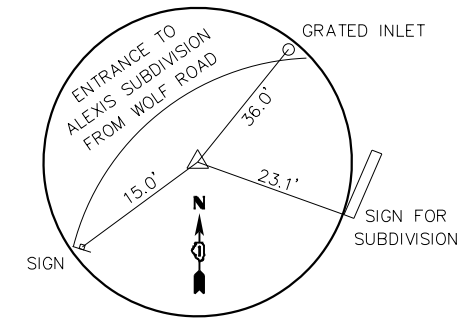
LOCATION	EARTH EXCAVATION (20200100)	EARTH EXCAVATION ADJUSTED 15% FOR SHRINKAGE (NO PAY ITEM)	EXCAVATION TO BE USED IN EMBANKMENT (NO PAY ITEM)	FURNISHED EXCAVATION	EARTHWORK BALANCE TO BE HAULED FROM SITE (NO PAY ITEM)
ABOVE CULVERT	135	115	0	0	115
TOTAL	135	115	0	0	115

MIXTURES TABLE

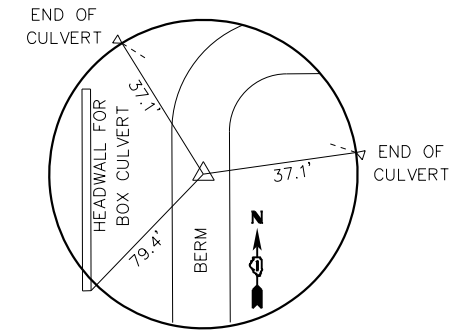
MIXTURE TYPE	AIR VOIDS @ Ndes	QUALITY MANAGEMENT PROGRAM (QMP)
CLASS D PATCHES		
HOT-MIX-ASPHALT SURFACE COURSE, MIX D", N70; 2" (IL-9.5 MM)	4% @ 70 Gyr.	QC/QA
HOT-MIX-ASPHALT BINDER COURSE, IL-19.0, 11"; MIN 2-1/4" LIFTS	4% @ 70 Gyr.	QC/QA
QMP DESIGNATION: QUALITY CONTROL/QUALITY ASSURANCE (QC/QA)		

1. THE UNIT WEIGHT USED TO CALCULATE ALL HMA MIXTURE QUANTITIES IS 112 LBS/SQYD/IN.
2. FOR NON-POLYMERIZED HMA THE "AC TYPE" SHALL BE "PG 64-22" UNLESS MODIFIED BY DISTRICT ONE SPECIAL PROVISIONS.
3. FOR USE OF RECYCLED MATERIALS SEE DISTRICT ONE SPECIAL PROVISIONS.
4. QUALITY MANAGEMENT PROGRAM (QMP) IDENTIFIES THE PARTICULAR QUALITY CONTROL SPECIFICATION THAT APPLIES TO THE HMA MIXTURE.

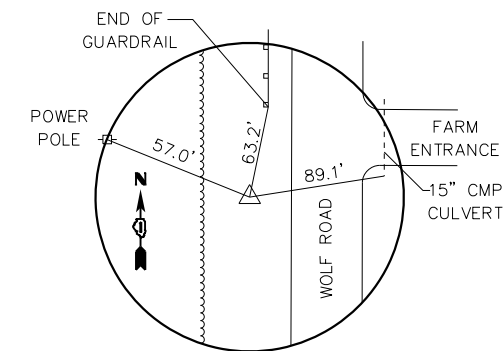
TIE POINTS



CONTROL POINT #1
IRON ROD W/CAP
N: 1807166.005
E: 1104908.260
EL: 713.11



CONTROL POINT #4
IRON ROD W/CAP
N: 1807004.249
E: 1104978.809
EL: 719.12



CONTROL POINT #3
IRON ROD W/CAP
N: 1806785.124
E: 1104864.926
EL: 716.13

FILE NAME =	USER NAME = marnack	DESIGNED - JH	REVISED -
Y:\13853 IDOT D1 W03 IL7\IGN\Design\Pre1	m\Plotsheets\DI62A46-sht-schedule.dgn	DRAWN - MW	REVISED -
Default	PLOT SCALE = 100.0000' / in.	CHECKED - PJK	REVISED -
	PLOT DATE = 2/23/2015	DATE - 2/20/2015	REVISED -

**STATE OF ILLINOIS
DEPARTMENT OF TRANSPORTATION**

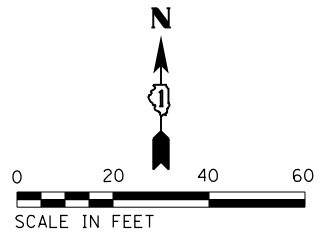
SCHEDULES AND TIES

SCALE: SHEET OF SHEETS STA. TO STA.

F.A.U. RTE.	SECTION	COUNTY	TOTAL SHEETS	SHEET NO.
2688	3349-1	COOK	16	6
CONTRACT NO. 62A46				
ILLINOIS FED. AID PROJECT				

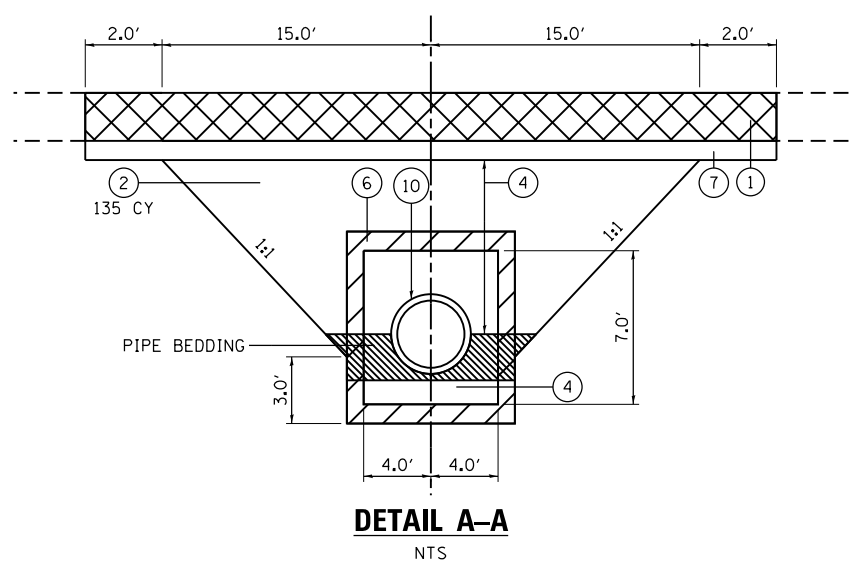
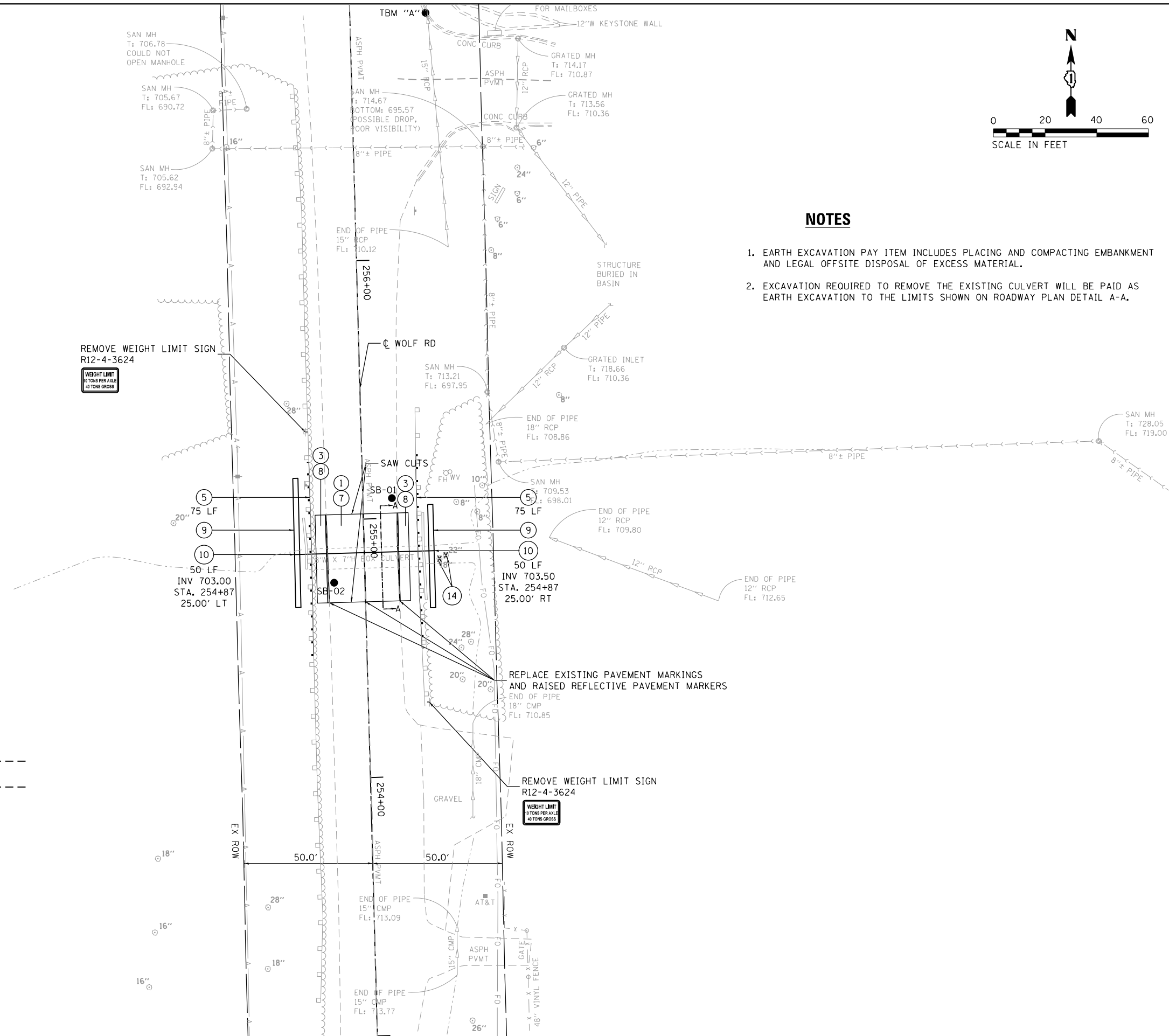
LEGEND

- ① CLASS D PATCHES, TYPE IV, 13 INCH (44201809, SQ YD)
- ② EARTH EXCAVATION (20200100, CU YD)
- ③ REMOVE EXISTING AGGREGATE SHOULDER (PAID AS EARTH EXCAVATION)
- ④ GRANULAR CULVERT BACKFILL (Z0023602, CU YD)
- ⑤ REMOVE AND REERECT STEEL PLATE BEAM GUARDRAIL, TYPE A (63301210, LF)
- ⑥ CONCRETE REMOVAL (50102400, CY YD)
- ⑦ AGGREGATE SUBGRADE IMPROVEMENT 12" (30300112, SQ YD)
- ⑧ AGGREGATE SHOULDERS, TYPE A 8" (48100700, SQ YD)
- ⑨ SHEET PILING RETAINING WALL (SEE STRUCTURAL PLANS)
- ⑩ PIPE CULVERTS, CLASS A, TYPE 2 48" (542A1093, LF)
- ⑪ PERIMETER EROSION BARRIER (28000400, FOOT)
- ⑫ TOPSOIL FURNISH AND PLACE, 6" (21101625, SQ YD)
- ⑬ SEEDING, CLASS 2A (25000210, ACRE)
- ⑭ TREE REMOVAL (OVER 15 UNITS DIAMETER) (20100210, UNIT)
- ⑮ INLET AND PIPE PROTECTION (28000500, EACH)



NOTES

- 1. EARTH EXCAVATION PAY ITEM INCLUDES PLACING AND COMPACTING EMBANKMENT AND LEGAL OFFSITE DISPOSAL OF EXCESS MATERIAL.
- 2. EXCAVATION REQUIRED TO REMOVE THE EXISTING CULVERT WILL BE PAID AS EARTH EXCAVATION TO THE LIMITS SHOWN ON ROADWAY PLAN DETAIL A-A.

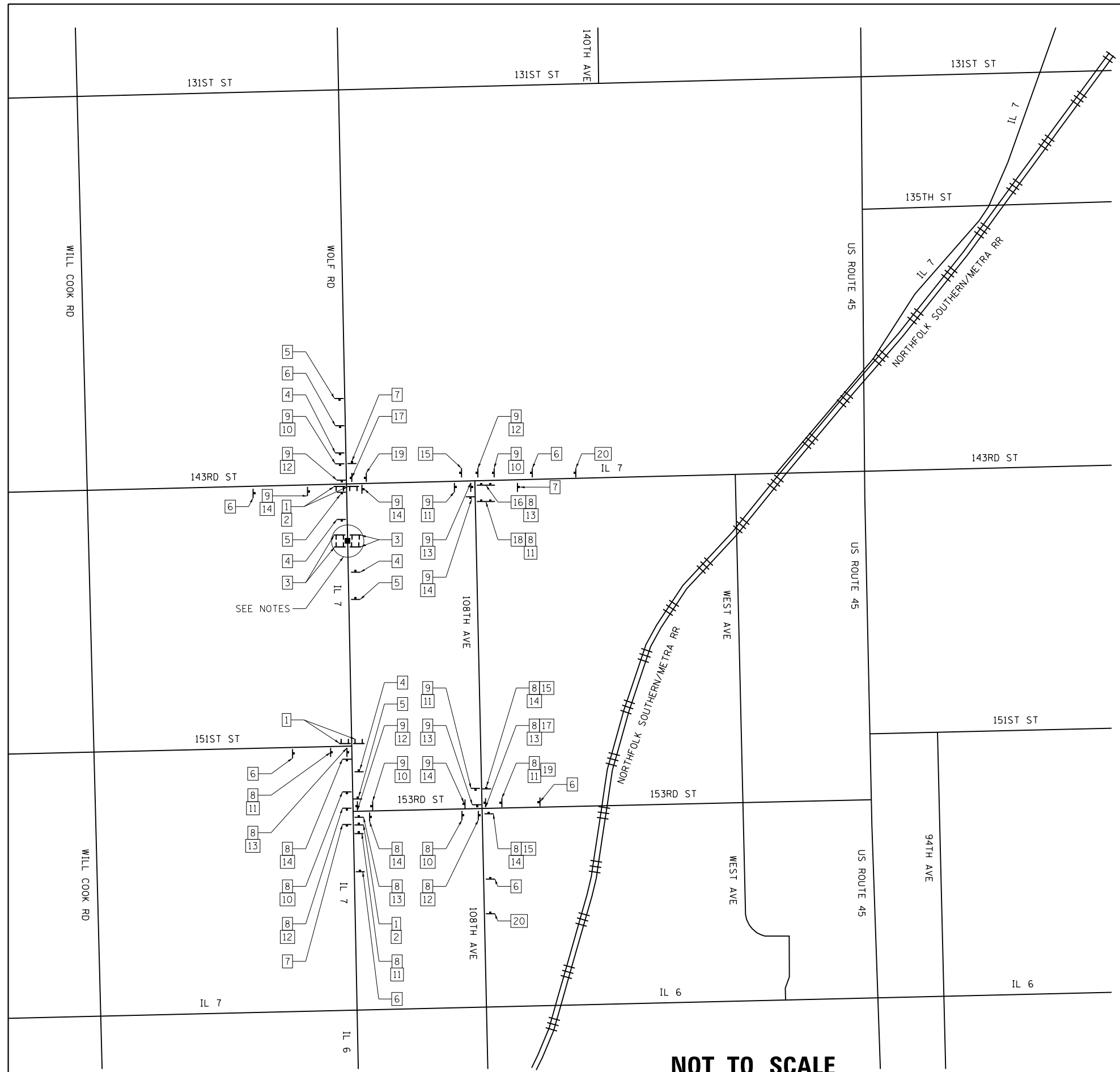


FILE NAME =	USER NAME = mwarnack	DESIGNED - JH	REVISED -
Y:\13853 IDOT D1 W03 IL7\DCN\Design\Pre1	m\Plotsheets\DI62A46-sht-plan.dgn	DRAWN - MW	REVISED -
Default	PLOT SCALE = 48.0000' / in.	CHECKED - PJK	REVISED -
	PLOT DATE = 2/23/2015	DATE - 2/20/2015	REVISED -

**STATE OF ILLINOIS
DEPARTMENT OF TRANSPORTATION**

ROADWAY PLANS	
SCALE:	SHEET OF SHEETS STA. TO STA.

F.A.U. RTE.	SECTION	COUNTY	TOTAL SHEETS	SHEET NO.
2688	3349-1	COOK	16	7
CONTRACT NO. 62A46				
ILLINOIS FED. AID PROJECT				



NOTES

1. PLACE [21] AT OR NEAR POINT OF CLOSURE 2 WEEKS PRIOR TO START DATE OF CLOSURE. REMOVE ASSEMBLY AFTER CLOSURE.

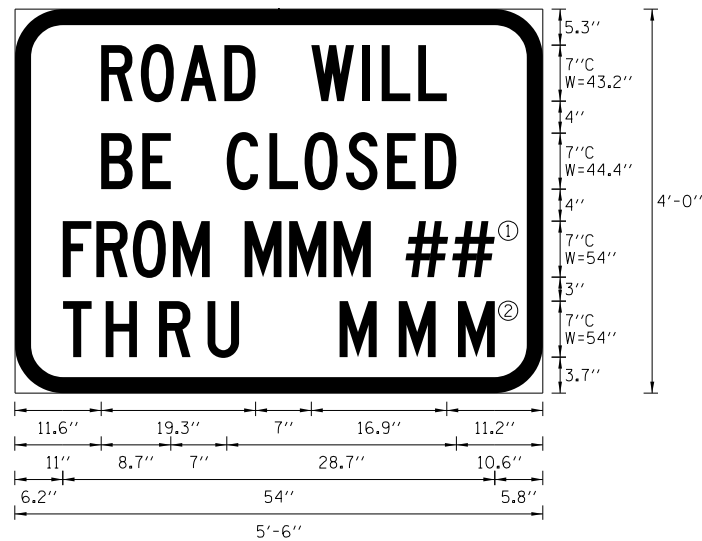
LEGEND

1		R11-4-6030 *	12		M6-1L-2115
2		M4-10L-4818 *	13		M6-1R-2115
	OR	M4-10R-4818 *	14		M6-3-2115
3		R11-2-4830 *	15		M3-1-3012 CUSTOM ** M4-9-3024
4		W20-3-4848	16		M3-1-3012 CUSTOM ** M4-9-3024
5		W20-3-4848	17		M3-1-3012 CUSTOM ** M4-9-3024
6		W20-2-4848	18		M3-1-3012 CUSTOM ** M4-9-3024
7		M4-8A-2418	19		M3-1-3012 CUSTOM ** M4-9-3024
8		M4-8-2412 M3-2-2412 M1-50-2424	20		CUSTOM (PAID AS TEMPORARY INFORMATION SIGNING)
9		M4-8-2412 M3-4-2412 M1-50-2424	21		CUSTOM (PAID AS TEMPORARY INFORMATION SIGNING)
10		M5-1L-2115			
11		M5-1R-2115			

- * MOUNT SIGN ON TYPE III BARRICADE WITH FLASHING LIGHTS.
** MINIMUM 5" LETTERS ON ORANGE BACKGROUND.

NOT TO SCALE

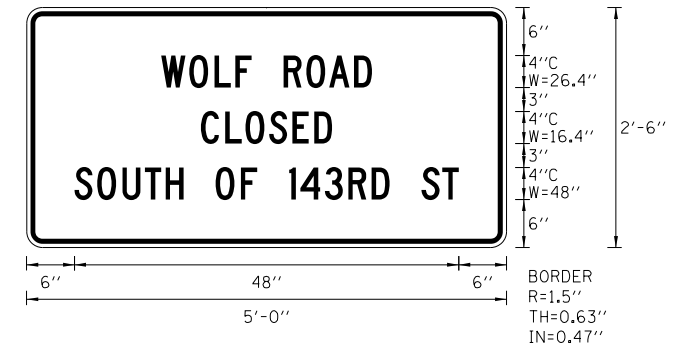
FILE NAME = Y:\13853 IDOT D1 W03 IL7\DCN\Design\Pre1	USER NAME = mwarnock	DESIGNED - JH	REVISED -	STATE OF ILLINOIS DEPARTMENT OF TRANSPORTATION	DETOUR ROUTE				F.A.U. RTE. = 2688	SECTION = 3349-1	COUNTY = COOK	TOTAL SHEETS = 16	SHEET NO. = 8
Default	m\Plotsheets\DI62446-sht-staging.dgn	DRAWN - MW	REVISED -		SCALE:	SHEET	OF	SHEETS	STA.	TO	STA.	CONTRACT NO. 62A46	
	PLOT SCALE = 100.0000' / in.	CHECKED - PJK	REVISED -										ILLINOIS FED. AID PROJECT
	PLOT DATE = 2/23/2015	DATE - 2/20/2015	REVISED -										



6.0" RADIUS, 1.3" BORDER, BLACK ON ORANGE;
 "ROAD WILL" C 2K; "BE CLOSED" C 2K; RECTANGLE ORANGE; RECTANGLE ORANGE; "HIGHWAY C" FONT

- ① OVERLAY PANEL ① TO CONTAIN STARTING DATE OF FULL CLOSURE AND DETOUR IMPLEMENTATION (I.E. "FROM APR 2")
- ② OVERLAY PANEL ② TO CONTAIN ENDING MONTH OF FULL CLOSURE AND DETOUR (I.E. "THRU JULY"). OMIT THE DATE ON PANEL ② MONTH ONLY.

ERECT SIGN ASSEMBLY (POST-MOUNTED) WITH PANELS ① AND ② IN PLACE ON ROAD TO BE CLOSED IN EACH DIRECTION NEAR POINT OF CLOSURE OR WITHIN SECTION TO BE FULLY CLOSED TWO (2) WEEKS PRIOR TO START DATE OF FULL CLOSURE. REMOVE ASSEMBLY AFTER CLOSURE.



BORDER
 R=1.5"
 TH=0.63"
 IN=0.47"

FILE NAME =	USER NAME = mwarnock	DESIGNED - JH	REVISED -
Y:\13853 IDOT D1 W03 IL7\DDN\Design\Pre1	m\Plotsheets\DI62A46-sht-sign.dgn	DRAWN - MW	REVISED -
Default	PLOT SCALE = 100.0000' / in.	CHECKED - PJK	REVISED -
	PLOT DATE = 2/23/2015	DATE - 2/20/2015	REVISED -

**STATE OF ILLINOIS
 DEPARTMENT OF TRANSPORTATION**

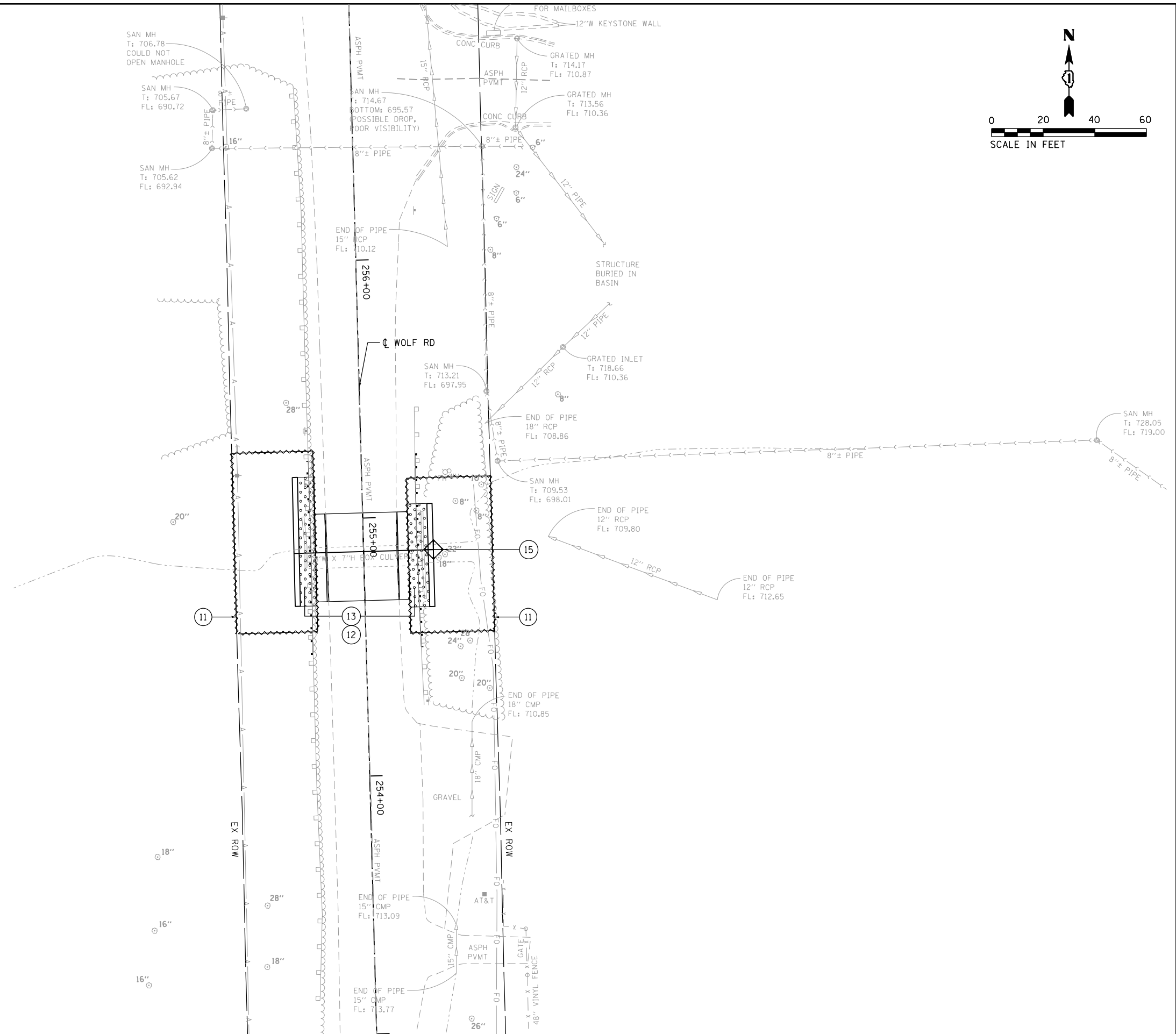
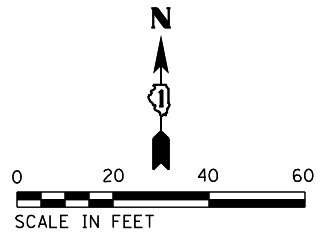
SIGNING DETAILS

SCALE: SHEET OF SHEETS STA. TO STA.

F.A.U. RTE.	SECTION	COUNTY	TOTAL SHEETS	SHEET NO.
2688	3349-1	COOK	16	9
CONTRACT NO. 62A46				
ILLINOIS FED. AID PROJECT				

LEGEND

- ① CLASS D PATCHES, TYPE IV, 13 INCH (44201809, SQ YD)
- ② EARTH EXCAVATION (20200100, CU YD)
- ③ REMOVE EXISTING AGGREGATE SHOULDER (PAID AS EARTH EXCAVATION)
- ④ GRANULAR CULVERT BACKFILL (Z0023602, CU YD)
- ⑤ REMOVE AND REERECT STEEL PLATE BEAM GUARDRAIL, TYPE A (63301210, LF)
- ⑥ CONCRETE REMOVAL (50102400, CY YD)
- ⑦ AGGREGATE SUBGRADE IMPROVEMENT 12" (30300112, SQ YD)
- ⑧ AGGREGATE SHOULDERS, TYPE A 8" (48100700, SQ YD)
- ⑨ SHEET PILING RETAINING WALL (SEE STRUCTURAL PLANS)
- ⑩ PIPE CULVERTS, CLASS A, TYPE 2 48" (542A1093, LF)
- ⑪ PERIMETER EROSION BARRIER (28000400, FOOT)
- ⑫ TOPSOIL FURNISH AND PLACE, 6" (21101625, SQ YD)
- ⑬ SEEDING, CLASS 2A (25000210, ACRE)
- ⑭ TREE REMOVAL (OVER 15 UNITS DIAMETER) (20100210, UNIT)
- ⑮ INLET AND PIPE PROTECTION (28000500, EACH)



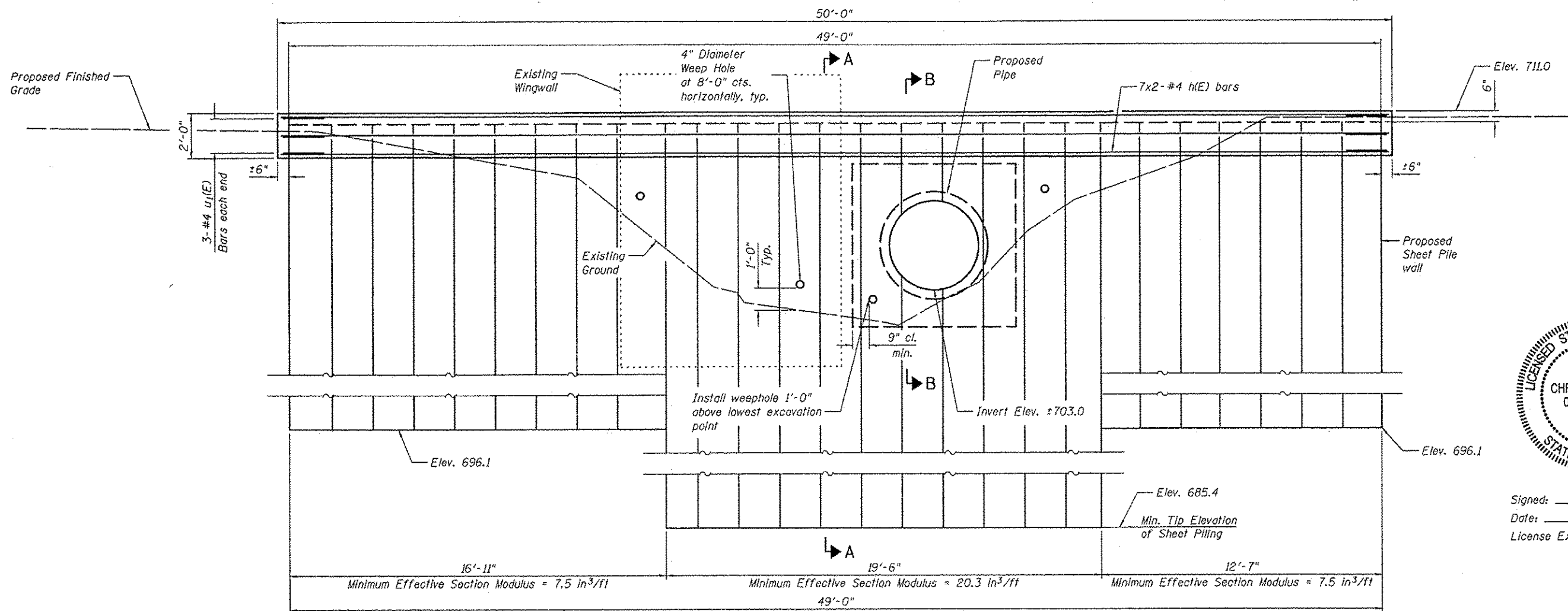
FILE NAME =	USER NAME = mwarnack	DESIGNED - JH	REVISED -
Y:\13853 IDOT D1 W03 IL7\Design\Pre\m\Plotsheets\162446-sht-eros.dgn		DRAWN - MW	REVISED -
Default	PLOT SCALE = 48.0000' / in.	CHECKED - PJK	REVISED -
	PLOT DATE = 2/23/2015	DATE - 2/20/2015	REVISED -

**STATE OF ILLINOIS
DEPARTMENT OF TRANSPORTATION**

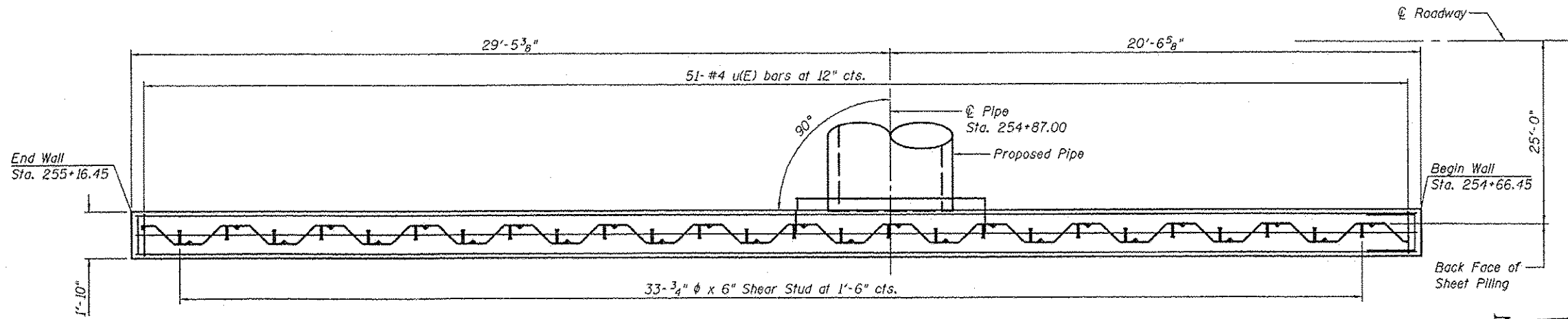
EROSION AND SEDIMENT CONTROL PLANS			
SCALE:	SHEET	OF	SHEETS
	STA.	TO	STA.

F.A.U. RTE.	SECTION	COUNTY	TOTAL SHEETS	SHEET NO.
2688	3349-1	COOK	16	10
CONTRACT NO. 62A46				
ILLINOIS FED. AID PROJECT				

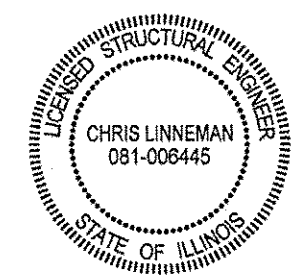
PRINT DATE: 2/20/2015 8:04:54 AM Y:\13015\03 IDOT IL 7 over ditch\DCN\Bridg\Final\Plot\sheet\001 West Wall Plan.dgn



ELEVATION



PLAN



Signed: *[Signature]*
 Date: 2/20/2015
 License Expires: 11/30/2016

MINIMUM BAR LAP
 #4 bar = 2'-11"

EFK Moen, LLC
 Civil Engineering Design
 125 South Wacker Drive, Suite 2090
 Chicago, IL 60606
 Phone: 312.396.4065

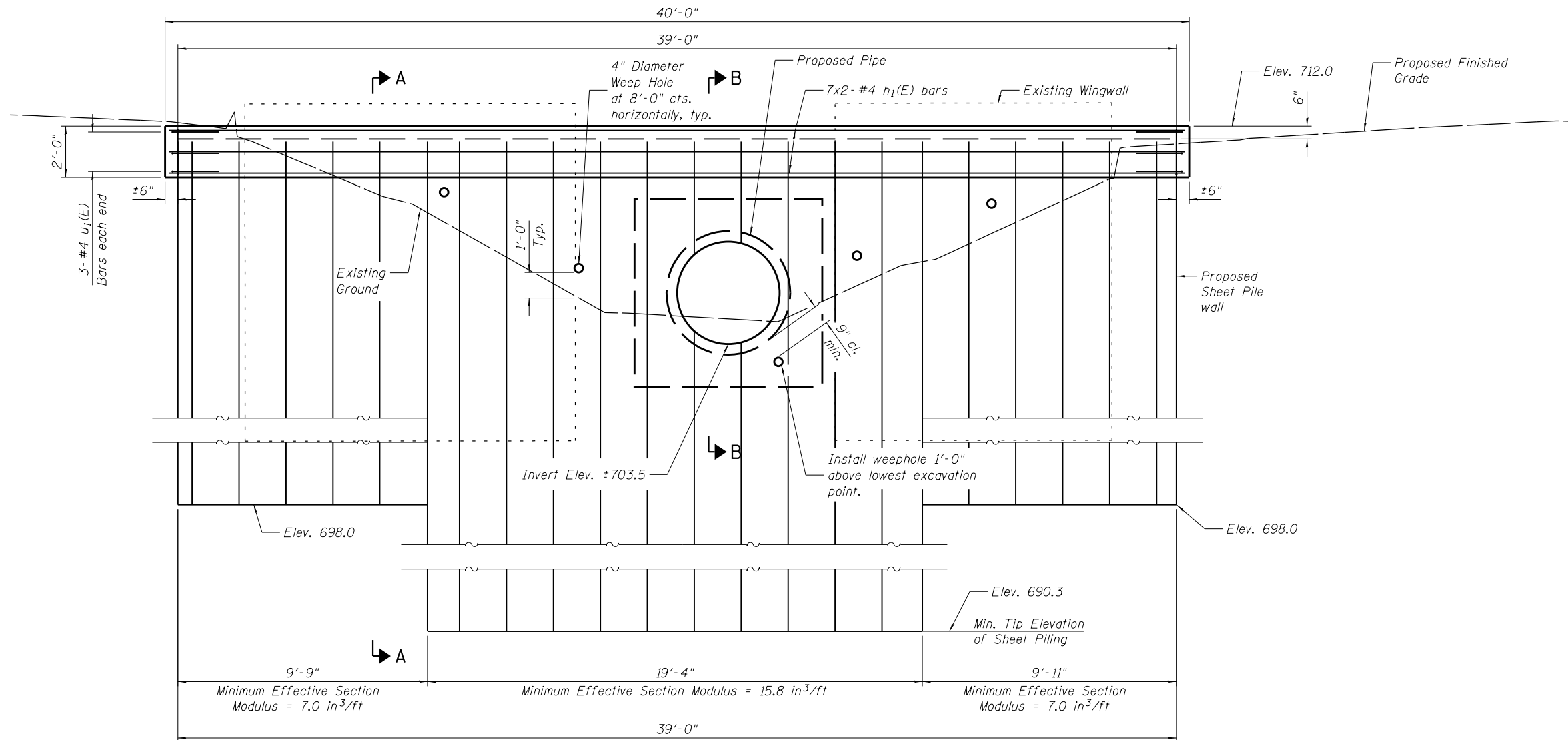
USER NAME - cad	DESIGNED - CTW	REVISED -
PLOT SCALE - 8/1687' = 1"	CHECKED - CDL	REVISED -
PLOT DATE - 2/20/2015	DRAWN - JAA	REVISED -
	DATE - 2/20/2015	REVISED -

STATE OF ILLINOIS
 DEPARTMENT OF TRANSPORTATION

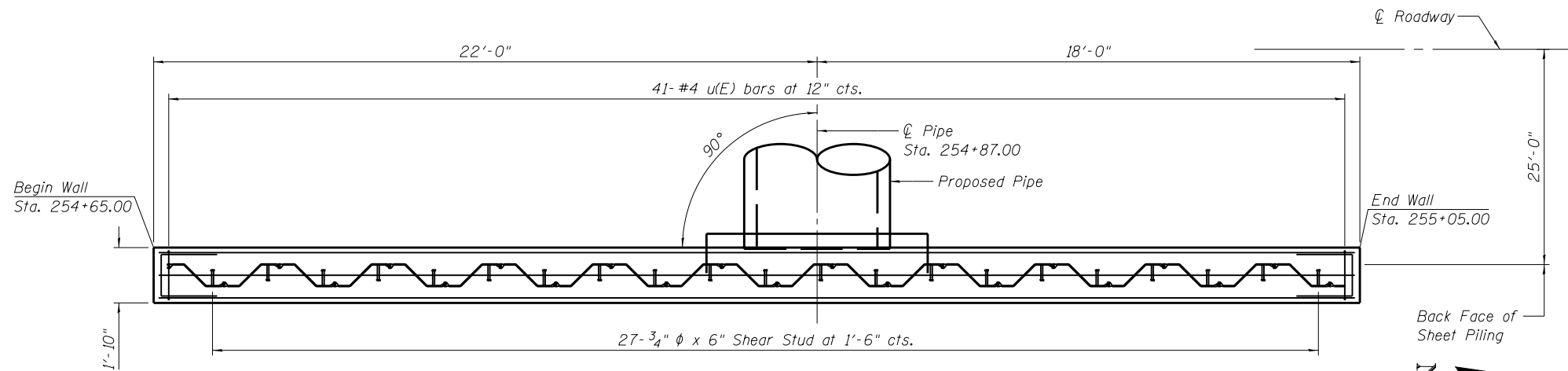
WEST SHEET PILE WALL PLAN AND ELEVATION
 SHEET NO. 1 OF 4 SHEETS

F.A.D. RTE.	SECTION	COUNTY	TOTAL SHEETS	SHEET NO.
2688	3349-1	COOK	16	11
CONTRACT NO. 62A46				
[ILLINOIS] FED. AID PROJECT				

PRINT DATE: 2/20/2015 7:15:32 AM Y:\3015\03 ID01 IL 7 over ditch\DGN\Bridg\Final\Plotsheets\002_East_WallPlan.dgn



ELEVATION



PLAN

MINIMUM BAR LAP

#4 bar = 2'-11"

EFK Moen, LLC
Civil Engineering Design
125 South Wacker Drive, Suite 2090
Chicago, IL 60606
Phone: 312.396.4065

USER NAME = ja	DESIGNED - CTW	REVISED -
PLOT SCALE = 0.2" = 1' / in.	CHECKED - CDL	REVISED -
PLOT DATE = 2/20/2015	DRAWN - JAA	REVISED -
	DATE - 2/20/2015	REVISED -

**STATE OF ILLINOIS
DEPARTMENT OF TRANSPORTATION**

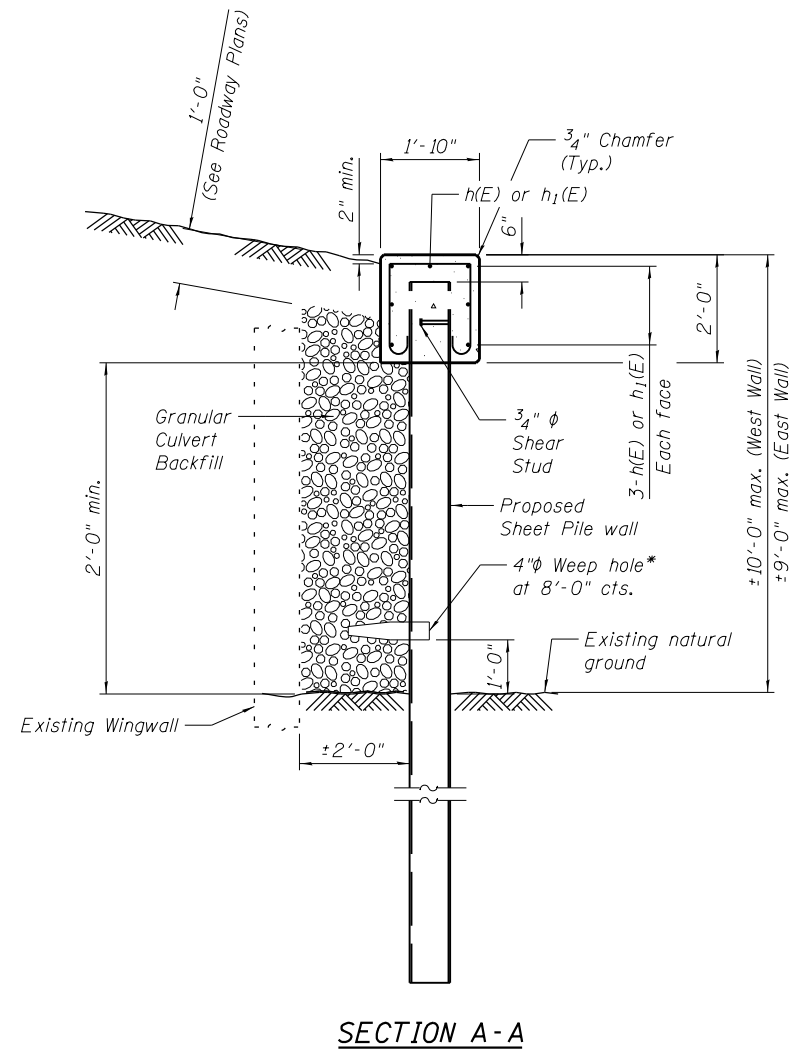
EAST SHEET PILE WALL PLAN AND ELEVATION

SHEET NO. 2 OF 4 SHEETS

F.A.U. RTE.	SECTION	COUNTY	TOTAL SHEETS	SHEET NO.
2688	3349-1	COOK	16	12
CONTRACT NO. 62A46				

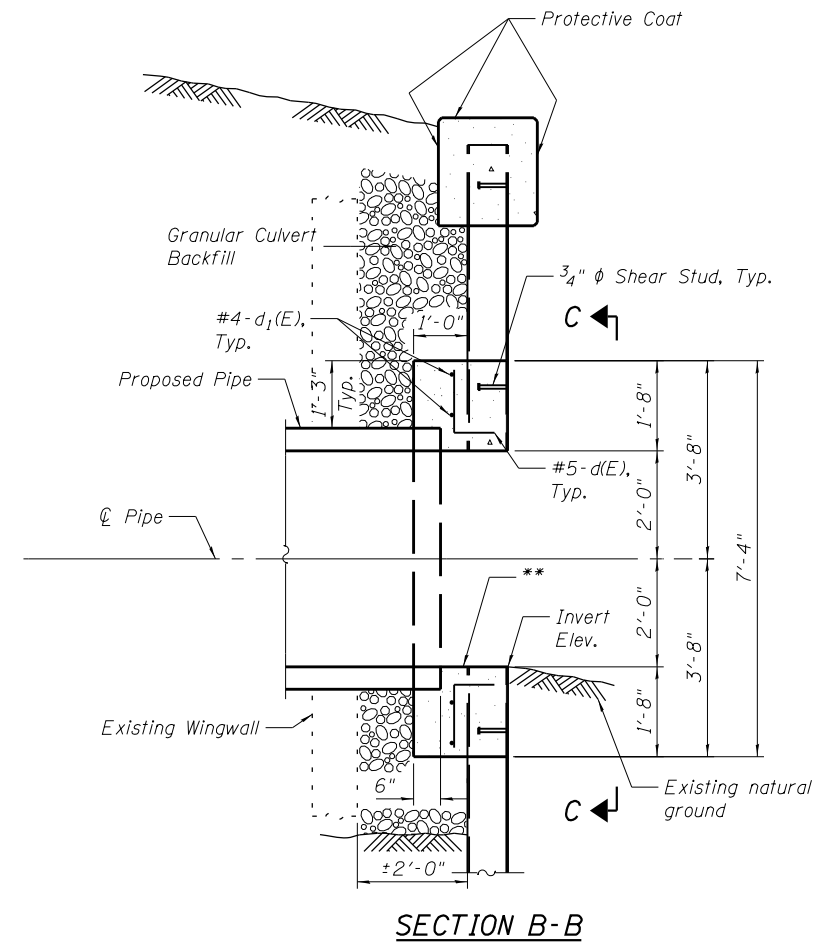
ILLINOIS FED. AID PROJECT

PRINT DATE: 2/23/2015 10:38:25 AM Y:\3015\03 ID01 IL 7 over ditch\DGN\Bridg\Final\Plotsheets\003_Details.dgn



SECTION A-A

Notes:
 * Cost of Weep Hole included in the cost of Permanent Steel Sheet Piling.



SECTION B-B

Notes:
 ** Inside diameter of concrete collar to match inside of proposed pipe.

Notes:
 Due to the deteriorated condition of the existing wingwalls, Permanent Sheet Piling shall be installed prior to any Concrete Removal operations. Existing wingwalls that do not interfere with the construction of the new pipe culvert may be left in place.

EFK Moen, LLC
 Civil Engineering Design
 125 South Wacker Drive, Suite 2090
 Chicago, IL 60606
 Phone: 312.396.4065

USER NAME = cc	DESIGNED - CTW	REVISED -
PLOT SCALE = 0.1667' / 1"	CHECKED - CDL	REVISED -
PLOT DATE = 2/23/2015	DRAWN - JAA	REVISED -
	DATE - 2/23/2015	REVISED -

STATE OF ILLINOIS
 DEPARTMENT OF TRANSPORTATION

SHEET PILE WALL DETAILS

SHEET NO. 3 OF 4 SHEETS

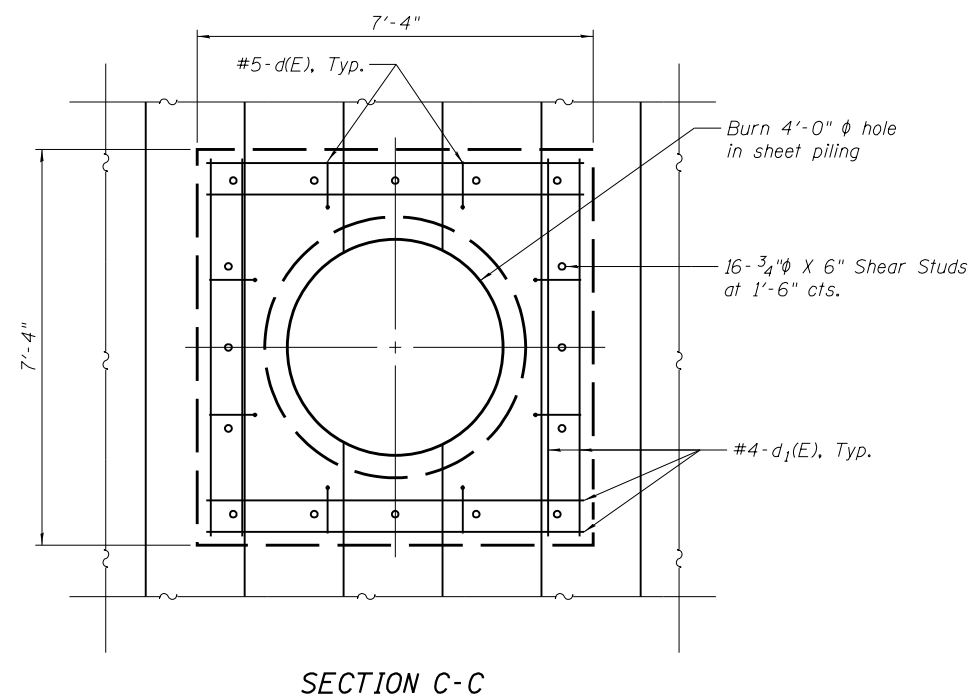
F.A.U. RTE.	SECTION	COUNTY	TOTAL SHEETS	SHEET NO.
2688	3349-1	COOK	16	13
CONTRACT NO. 62A46				
ILLINOIS FED. AID PROJECT				

DESIGN SPECIFICATIONS
 AASHTO LRFD Bridge Design Specifications,
 6th edition with 2013 Interims.

DESIGN STRESSES

FIELD UNITS

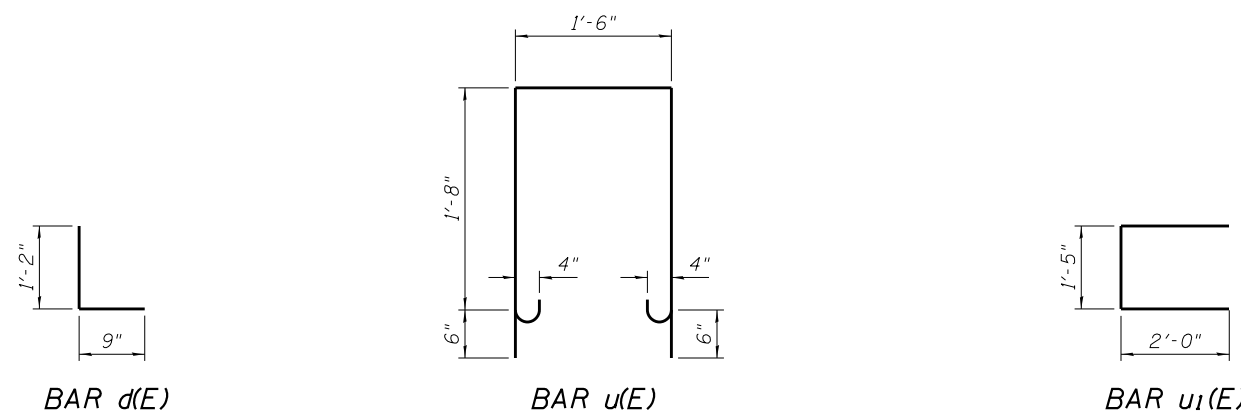
$f'_c = 3,500$ psi
 $f_y = 60,000$ psi (Reinforcement)
 $f_y = 50,000$ psi (ASTM A572 Grade 50)



TOTAL BILL OF MATERIAL

Bar	No.	Size	Length	Shape
d(E)	16	#5	1'-11"	┌───┐
d1(E)	16	#4	7'-0"	───
h(E)	14	#4	26'-4"	───
h1(E)	14	#4	21'-4"	───
u(E)	92	#4	5'-10"	└─┘
u1(E)	12	#4	5'-5"	└─┘
Concrete Structures			Cu. Yd.	16.2
Protective Coat			Sq. Yd.	60
Stud Shear Connectors			Each	92
Reinforcement Bars, Epoxy Coated			Pound	960
Permanent Steel Sheet Piling			Sq. Ft.	1590
Granular Culvert Backfill			Cu. Yd.	29

Notes:
 Reinforcement bars designated (E) shall be epoxy coated.
 Plan dimensions and details relative to existing plans are subject to nominal construction variations. The Contractor shall field verify existing dimensions and details affecting new construction and make necessary approved adjustments prior to construction or ordering of materials. Such variations shall not be cause for additional compensation for a change in scope of work, however, the Contractor will be paid for the quantity actually furnished based at the unit price bid for the work.
 Bars indicated thus 1 x 15- #5 etc. indicates 1 line of bars with 15 lengths per line.
 All exposed concrete edges shall have a 3/4" + 45° chamfer, except where shown otherwise.



PRINT DATE: 2/23/2015 10:26:13 AM Y:\3015\03 ID01 IL 7 over ditch\DGN\Bridge\Final\Plotsheets\004_Details.dgn

EFK Moen, LLC
 Civil Engineering Design
 125 South Wacker Drive, Suite 2090
 Chicago, IL 60606
 Phone: 312.396.4065

USER NAME = cc	DESIGNED - CTW	REVISED -
	CHECKED - CDL	REVISED -
PLOT SCALE = 0.1667' / 1"	DRAWN - JAA	REVISED -
PLOT DATE = 2/23/2015	DATE - 2/23/2015	REVISED -

STATE OF ILLINOIS
DEPARTMENT OF TRANSPORTATION

SHEET PILE WALL DETAILS

SHEET NO. 4 OF 4 SHEETS

F.A.U. RTE.	SECTION	COUNTY	TOTAL SHEETS	SHEET NO.
2688	3349-1	COOK	16	14
CONTRACT NO. 62A46			ILLINOIS FED. AID PROJECT	



GSI Job No. 14242

SOIL BORING LOG

Page 1 of 2

Date 1/13/15

ROUTE Illinois Route 7 (FAU 2688) DESCRIPTION Illinois Route 7 (FAU 2688) Over Spring Creek LOGGED BY NW

SECTION 3349-15D LOCATION NE 1/4, SEC. 7, TWP. T36N, RNG. R12E, 3rd PM

COUNTY Cook DRILLING METHOD Hollow Stem Auger/Mud Rotary HAMMER TYPE CME Automatic

STRUCT. NO.	Station	D E P T H H	B L O W S S	U C S Qu	M O I S T T	Surface Water Elev.	Stream Bed Elev.	Groundwater Elev.:	First Encounter	Upon Completion	After	Hrs.	D E P T H H	B L O W S S	U C S Qu	M O I S T T				
016-1340	254+81	(ft)	(/6")	(tsf)	(%)	n/a ft	n/a ft		Dry to -10.0'	n/a ft			(ft)	(/6")	(tsf)	(%)				
12.0" ASPHALT, 6.0" CONCRETE								CLAY to CLAY LOAM-brown & gray-stiff to very stiff (continued) becoming gray @ -20.5'												
	711.90		7											3						
CLAY LOAM-dark brown & gray-medium stiff to very stiff (Fill)			5	2.3	22									5	2.2	20				
			5	P										7	B					
			3											3						
			3	2.0	21									4	1.3	18				
			4	P										6	B					
			4											2						
			4	1.0	26									3	1.0	18				
			3	P										3	B					
			3											5						
			3	0.7	30									6	1.2	18				
			4	B										8	B					
CLAY to CLAY LOAM-brown & gray-stiff to very stiff																				
	702.90		3											3						
			4	2.9	24									5	1.2	19				
			7	B										7	B					
			3											3						
			4	2.9	21									3	2.4	17				
			6	B										5	B					
			4											4						
			6	2.6	24									6	2.5	14				
			10	B										10	B					
CLAYEY SAND & GRAVEL-gray-medium dense																				
	675.40		4											4						
			7	2.7	19									11		10				
			9	B										16						

The Unconfined Compressive Strength (UCS) Failure Mode is indicated by (B-Bulge, S-Shear, P-Penetrometer)
The SPT (N value) is the sum of the last two blow values in each sampling zone (AASHTO T206)

BBS, from 137 (Rev. 8-99)



GSI Job No. 14242

SOIL BORING LOG

Page 2 of 2

Date 1/13/15

ROUTE Illinois Route 7 (FAU 2688) DESCRIPTION Illinois Route 7 (FAU 2688) Over Spring Creek LOGGED BY NW

SECTION 3349-15D LOCATION NE 1/4, SEC. 7, TWP. T36N, RNG. R12E, 3rd PM

COUNTY Cook DRILLING METHOD Hollow Stem Auger/Mud Rotary HAMMER TYPE CME Automatic

STRUCT. NO.	Station	D E P T H H	B L O W S S	U C S Qu	M O I S T T	Surface Water Elev.	Stream Bed Elev.	Groundwater Elev.:	First Encounter	Upon Completion	After	Hrs.	D E P T H H	B L O W S S	U C S Qu	M O I S T T	
016-1340	254+81	(ft)	(/6")	(tsf)	(%)	n/a ft	n/a ft		Dry to -10.0'	n/a ft			(ft)	(/6")	(tsf)	(%)	
CLAY LOAM-gray-stiff																	
	672.90		3											4	1.5	15	
			4	B										7	B		
			4											4			
			7	1.8	17									7	B		
End of boring @ -45.0'. Boring backfilled with cuttings.																	
	668.40		10	B													

The Unconfined Compressive Strength (UCS) Failure Mode is indicated by (B-Bulge, S-Shear, P-Penetrometer)
The SPT (N value) is the sum of the last two blow values in each sampling zone (AASHTO T206)

BBS, from 137 (Rev. 8-99)