

04-24-2015 LETTING ITEM 040

STATE OF ILLINOIS
DEPARTMENT OF TRANSPORTATION
DIVISION OF HIGHWAYS

**PROPOSED
HIGHWAY PLANS**

VARIOUS ROUTES DISTRICT WIDE
AT VARIOUS EXPRESSWAY MEDIANS
SECTION: 2015-0021
HIGH TENSION CABLE BARRIER REPAIR
VARIOUS COUNTIES
C-91-245-15

F.A. RTE.	SECTION	COUNTY	TOTAL SHEETS	SHEET NO.
VAR.	2015-0021	VARIOUS	15	1
FED. ROAD DIST. NO. 1	ILLINOIS	CONTRACT NO. 62A55		

D-91-245-15



SEE LOCATION MAPS
SHEETS 4-10

J.U.L.I.E.
JOINT UTILITY LOCATION INFORMATION FOR EXCAVATION
1-800-892-0123
OR 811

PROJECT ENGINEER: J. ALAIN MIDY (847) 221-3056
PROJECT MANAGER: ISSAM RAYYAN (847) 705-4178

CONTRACT NO. 62A55

STATE OF ILLINOIS
DEPARTMENT OF TRANSPORTATION
DIVISION OF HIGHWAYS

SUBMITTED January 23 20 15
John Furtmann
DEPUTY DIRECTOR OF HIGHWAYS, REGION ENGINEER

Mar 20 20 15
John D. Baranzelli P.E.
ENGINEER OF DESIGN AND ENVIRONMENT

Mar 20 20 15
Omer Osman P.E.
DIRECTOR OF HIGHWAYS, CHIEF ENGINEER

PRINTED BY THE AUTHORITY
OF THE STATE OF ILLINOIS

INDEX OF SHEETS

STATE STANDARDS

GENERAL NOTES

<u>SHEET NO.</u>	<u>DESCRIPTION</u>	<u>STANDARD NO.</u>	<u>DESCRIPTION</u>
1	COVER SHEET	701400-08	APPROACH TO LANE CLOSURE, FREEWAY/EXPRESSWAY
2	INDEX OF SHEETS, STANDARDS AND GENERAL NOTES	701401-09	LANE CLOSURE, FREEWAY/EXPRESSWAY
3	SUMMARY OF QUANTITIES	701406-09	LANE CLOSURE, FREEWAY/EXPRESSWAY, DAY OPERATIONS ONLY
4-10	LOCATION MAPS	701421-07	LANE CLOSURE, MULTILANE, DAY OPERATIONS ONLY
11-12	HIGH TENSION GUARDRAIL DETAILS (BRIFEN USA)	701901-04	TRAFFIC CONTROL DEVICES
13	HIGH TENSION GUARDRAIL DETAILS (GIBLARTAR)		
14	HIGH TENSION GUARDRAIL DETAILS (TRINITY)		
15	HIGHWAY)TRAFFIC CONTROL FOR FREEWAY SHOULDER CLOSURES AND PARTIAL RAMP CLOSURES (TC-17)		

BEFORE STARTING ANY EXCAVATION, THE CONTRACTOR SHALL CALL "J.U.L.I.E." AT (800) 892-0123 OR 811 FOR FIELD LOCATIONS OF BURIED ELECTRIC, TELEPHONE AND GAS UTILITIES. 48 HOUR NOTIFICATION IS REQUIRED.

THE CONTRACTOR SHALL COORDINATE CONSTRUCTION ACTIVITIES WITH UTILITY COMPANIES.

THE CONTRACTOR WILL NOT BE ALLOWED TO SET UP A YARD OR FIELD OFFICE ON STATE PROPERTY WITHOUT WRITTEN PERMISSION FROM THE DEPARTMENT.

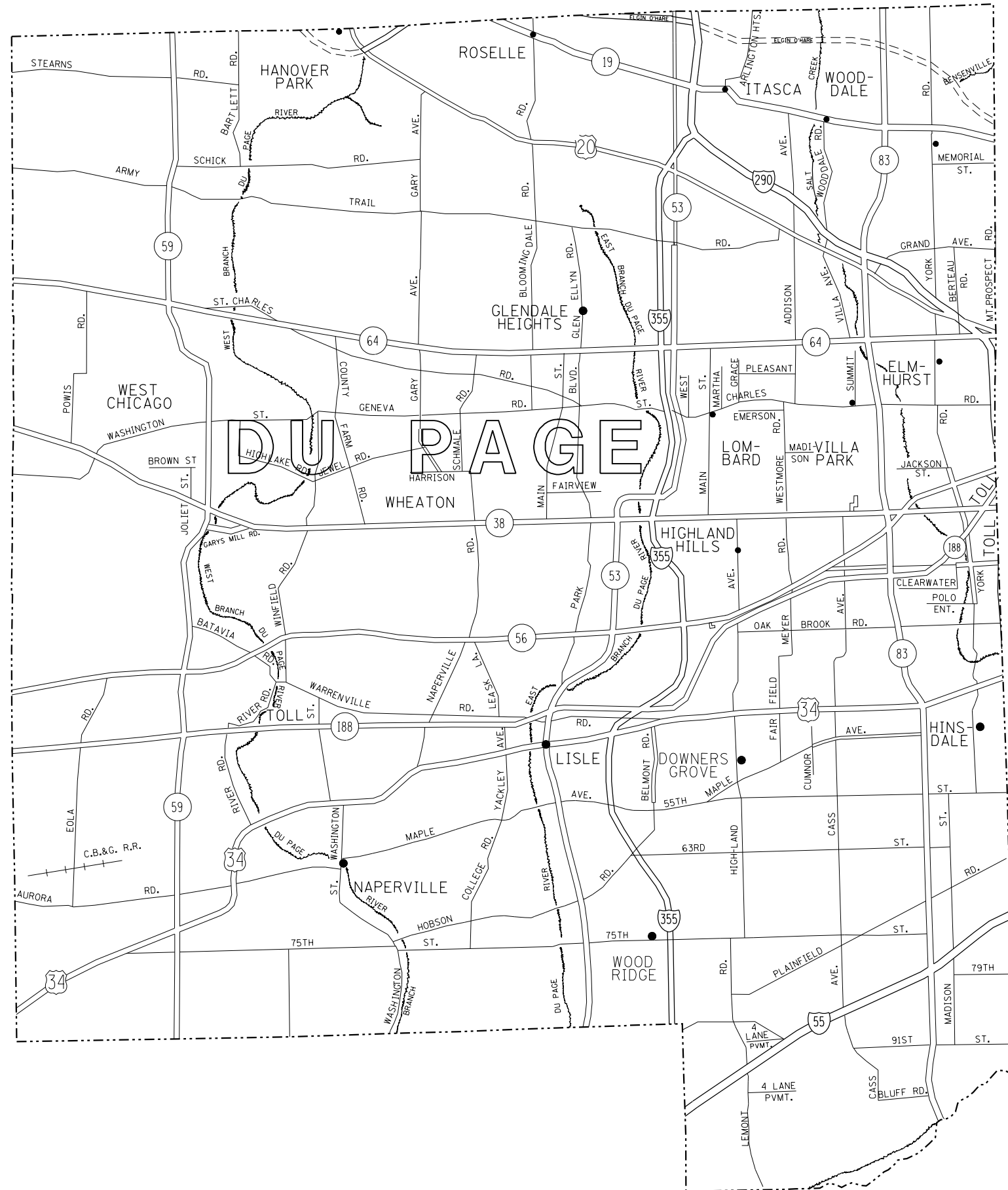
THE CONTRACTOR SHALL CALL STATE ELECTRICAL CONTRACTOR AT (773) 287-7600 TO LOCATE STATE OWNED FACILITIES.


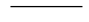


THE CONTRACTOR SHALL WORK IN THE DIRECTION OF TRAFFIC.

THE CONTRACTOR WILL NOT BE ALLOWED TO STORE MATERIALS OVERNIGHT IN THE MEDIAN.

THE PROPOSED DEPTH OF THE CONCRETE SOCKETED FOUNDATIONS SHALL BE 42" (MINIMUM).

FILE NAME =	USER NAME = pyznanowksrb	DESIGNED -	REVISED -	STATE OF ILLINOIS DEPARTMENT OF TRANSPORTATION	CABLE BARRIER REPAIR AT VARIOUS EXPRESSWAY MEDIANS INDEX OF SHEETS, STATE STANDARDS & GENERAL NOTES	F.A. RTE.	SECTION	COUNTY	TOTAL SHEETS	SHEET NO.	
c:\pwwork\pwwork\pyznanowksrb\d042469	10124515-shi-plen.dgn	DRAWN -	REVISED -			VAR.	2015-0021	VARIOUS	15	2	
	PLOT SCALE = 100.0000' / 1"	CHECKED -	REVISED -			CONTRACT NO. 62A55					
	PLOT DATE = 1/21/2015	DATE -	REVISED -			FED. ROAD DIST. NO. 1 ILLINOIS FED. AID PROJECT					
						SCALE:	SHEET NO.	OF	SHEETS	STA. TO STA.	



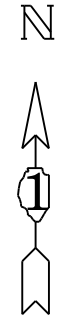
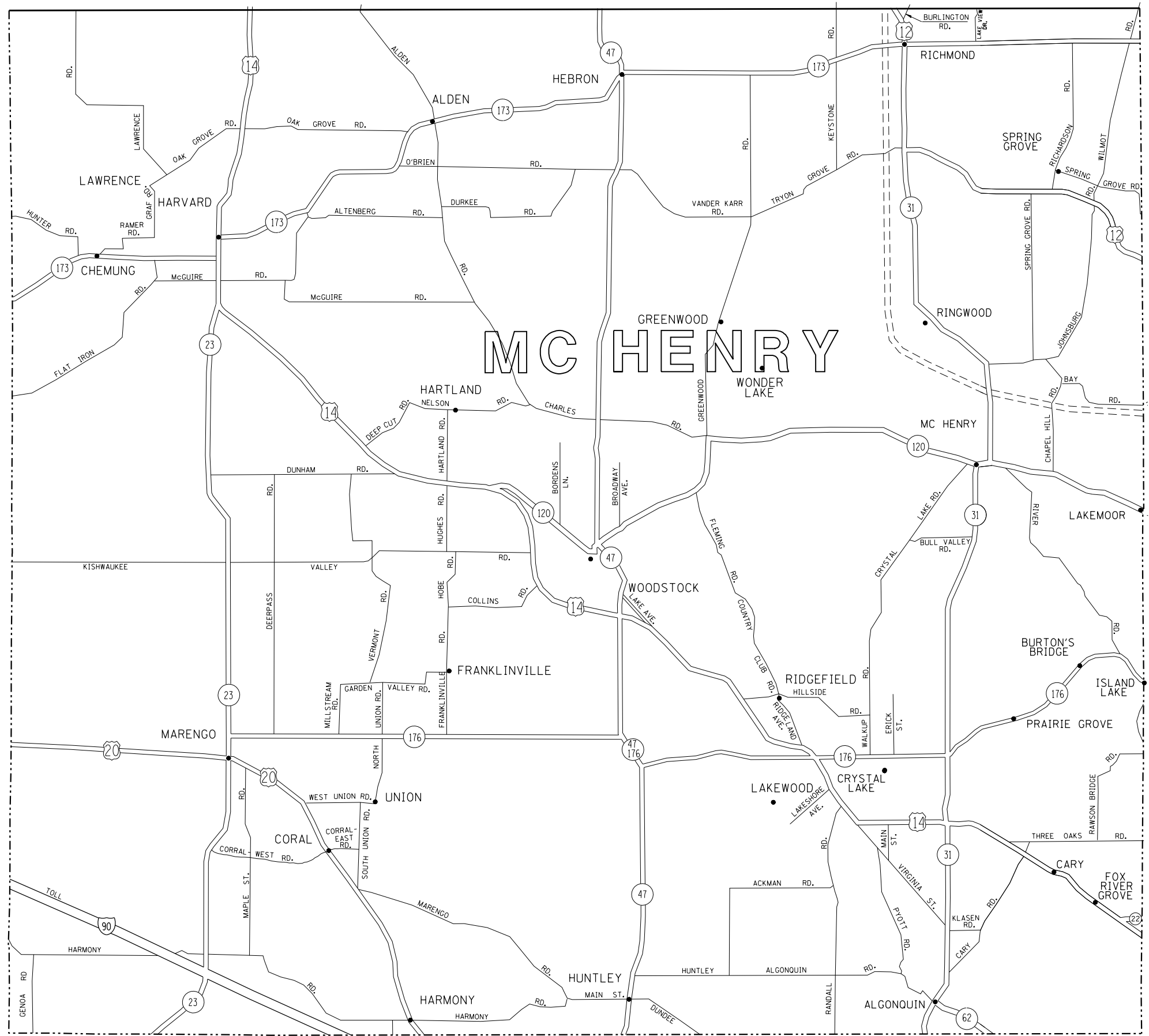
- LEGEND**
-  STATE HIGHWAYS & EXPRESSWAYS WITH EXISTING HIGH TENSION BARRIERS.
 -  STATE HIGHWAYS & EXPRESSWAYS WITHIN STATE JURISDICTION. (EXCEPT TOLLWAYS)
 -  FUTURE HIGHWAYS
 -  VARIOUS AGENCIES HIGHWAYS


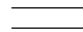
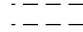

FILE NAME =	USER NAME = pyrzenowskirb	DESIGNED -	REVISED -
c:\pw\work\p\dot\pyrzenowskirb\d042469	ND124515-sht-plan.dgn	DRAWN -	REVISED -
	PLOT SCALE = 100.0000' / in.	CHECKED -	REVISED -
	PLOT DATE = 1/21/2015	DATE -	REVISED -

**STATE OF ILLINOIS
DEPARTMENT OF TRANSPORTATION**

CABLE BARRIER REPAIR AT VARIOUS EXPRESSWAY MEDIANS DUPAGE COUNTY LOCATION MAP	
SCALE:	SHEET NO. 1 OF 7 SHEETS STA. TO STA.

F.A. RTE.	SECTION	COUNTY	TOTAL SHEETS	SHEET NO.
VAR.	2015-0021	VARIOUS	15	4
			CONTRACT NO. 62A55	
FED. ROAD DIST. NO. 1 ILLINOIS FED. AID PROJECT				



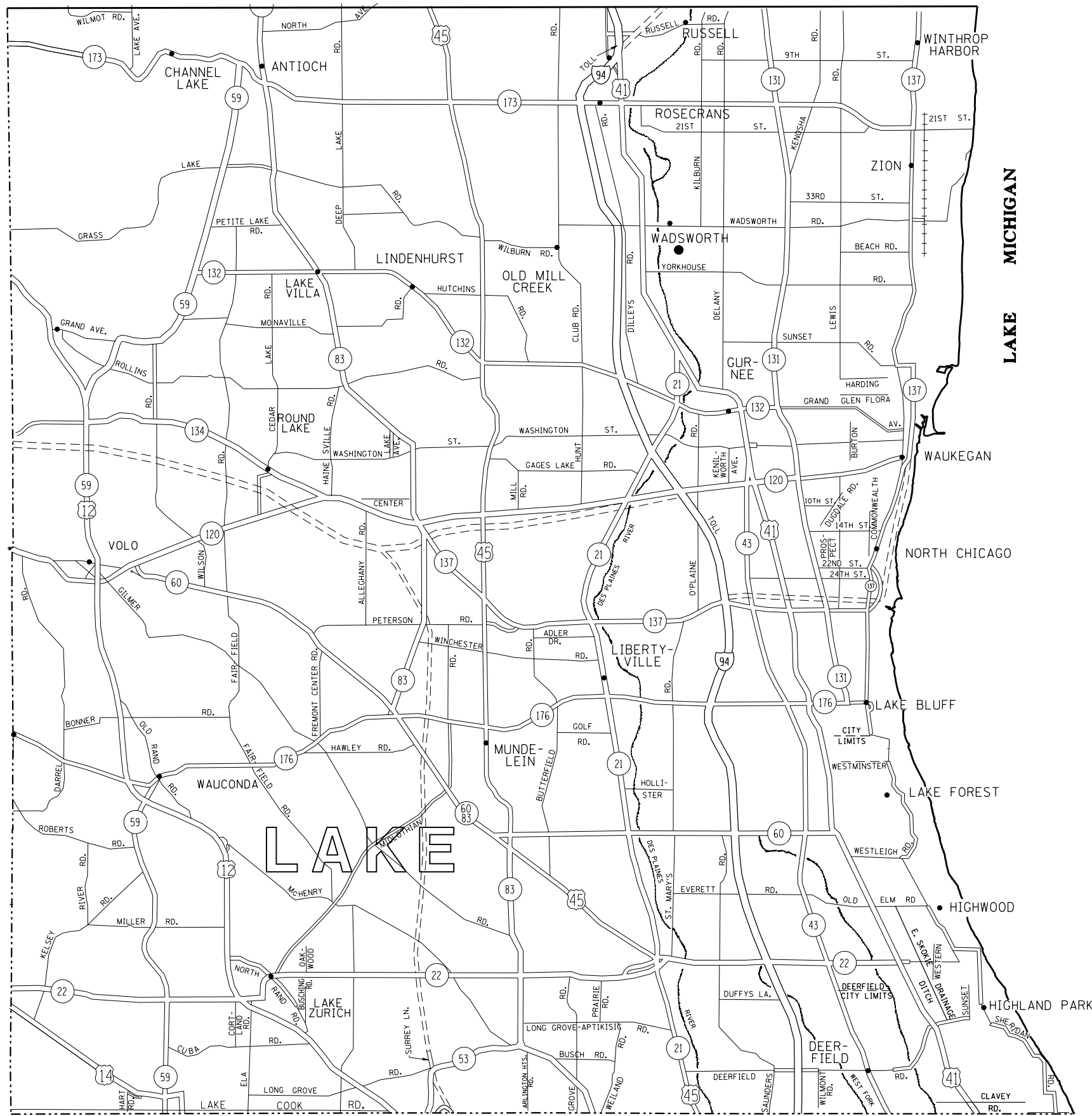
- LEGEND**
-  STATE HIGHWAYS & EXPRESSWAYS WITH EXISTING HIGH TENSION BARRIERS.
 -  STATE HIGHWAYS & EXPRESSWAYS WITHIN STATE JURISDICTION. (EXCEPT TOLLWAYS)
 -  FUTURE HIGHWAYS
 -  VARIOUS AGENCIES HIGHWAYS

FILE NAME =	USER NAME = pyzzenowskirb	DESIGNED -	REVISED -
et:\pw\work\p1dot\pyzzenowskirb\042469	ND124515-sht-plan.dgn	DRAWN -	REVISED -
	PLOT SCALE = 100.0000' / in.	CHECKED -	REVISED -
	PLOT DATE = 1/21/2015	DATE -	REVISED -

**STATE OF ILLINOIS
DEPARTMENT OF TRANSPORTATION**

CABLE BARRIER REPAIR AT VARIOUS EXPRESSWAY MEDIANS McHENRY COUNTY LOCATION MAP	
SCALE:	SHEET NO. 2 OF 7 SHEETS
STA.	TO STA.

F.A. RTE.	SECTION	COUNTY	TOTAL SHEETS	SHEET NO.
VAR.	2015-0021	VARIOUS	15	5
			CONTRACT NO. 62A55	
FED. ROAD DIST. NO. 1 ILLINOIS FED. AID PROJECT				



LEGEND

- STATE HIGHWAYS & EXPRESSWAYS WITH EXISTING HIGH TENSION BARRIERS.
- STATE HIGHWAYS & EXPRESSWAYS WITHIN STATE JURISDICTION. (EXCEPT TOLLWAYS)
- FUTURE HIGHWAYS
- VARIOUS AGENCIES HIGHWAYS

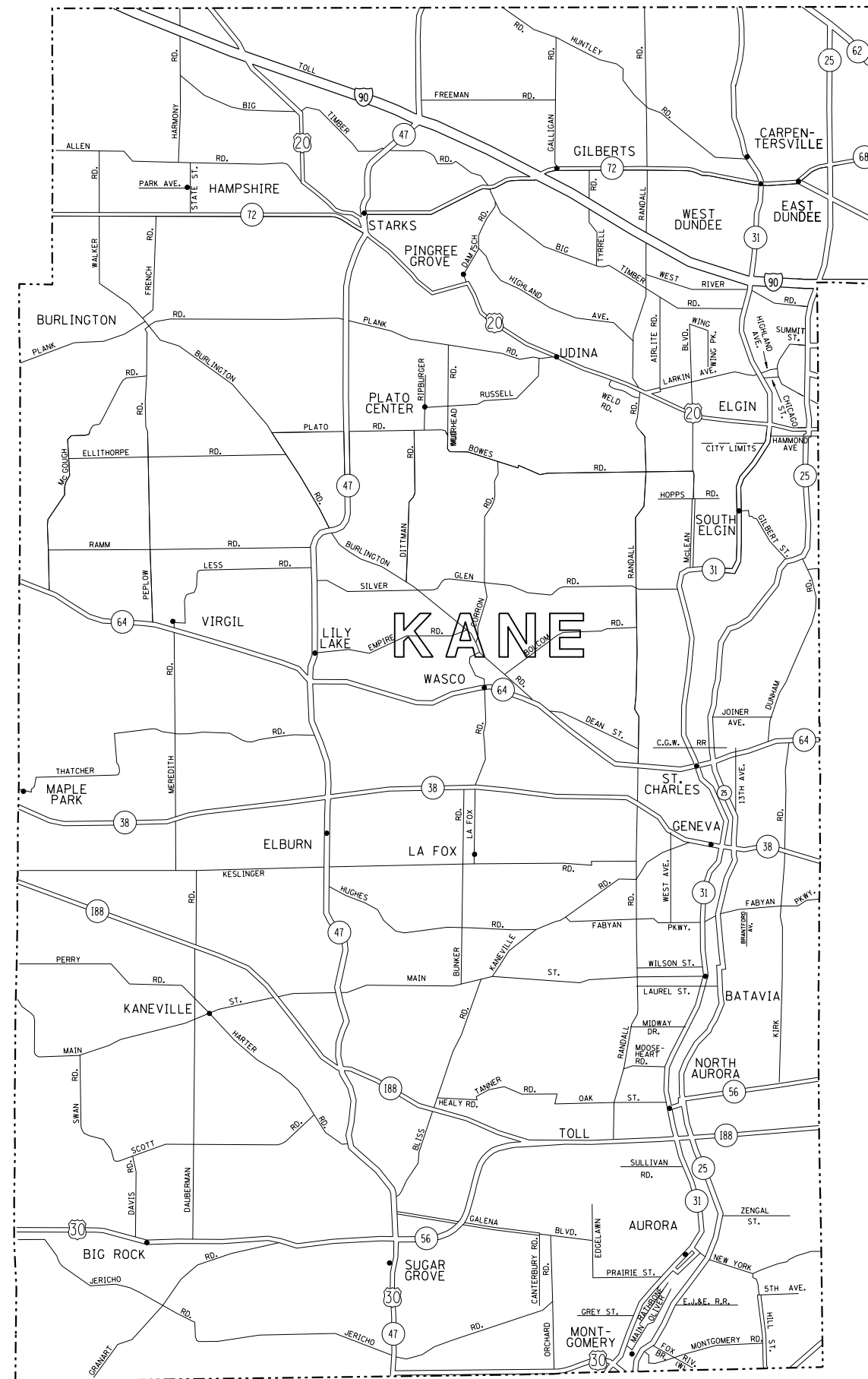
FILE NAME =	USER NAME = pyrzenowskirb	DESIGNED -	REVISED -
et:\pw\work\pwidot\pyrzenowskirb\042469	ND124515-shr-plan.dgn	DRAWN -	REVISED -
	PLOT SCALE = 100.0000' / in.	CHECKED -	REVISED -
	PLOT DATE = 1/21/2015	DATE -	REVISED -

**STATE OF ILLINOIS
DEPARTMENT OF TRANSPORTATION**


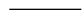
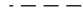

**CABLE BARRIER REPAIR
AT VARIOUS EXPRESSWAY MEDIANS
LAKE COUNTY LOCATION MAP**

SCALE: SHEET NO. 3 OF 7 SHEETS STA. TO STA.

F.A. RTE.	SECTION	COUNTY	TOTAL SHEETS	SHEET NO.
VAR.	2015-0021	VARIOUS	15	6
CONTRACT NO. 62A55				
FED. ROAD DIST. NO. 1 ILLINOIS FED. AID PROJECT				



LEGEND

-  STATE HIGHWAYS & EXPRESSWAYS WITH EXISTING HIGH TENSION BARRIERS.
-  STATE HIGHWAYS & EXPRESSWAYS WITHIN STATE JURIDICITION. (EXCEPT TOLLWAYS)
-  FUTURE HIGHWAYS
-  VARIOUS AGENCIES HIGHWAYS

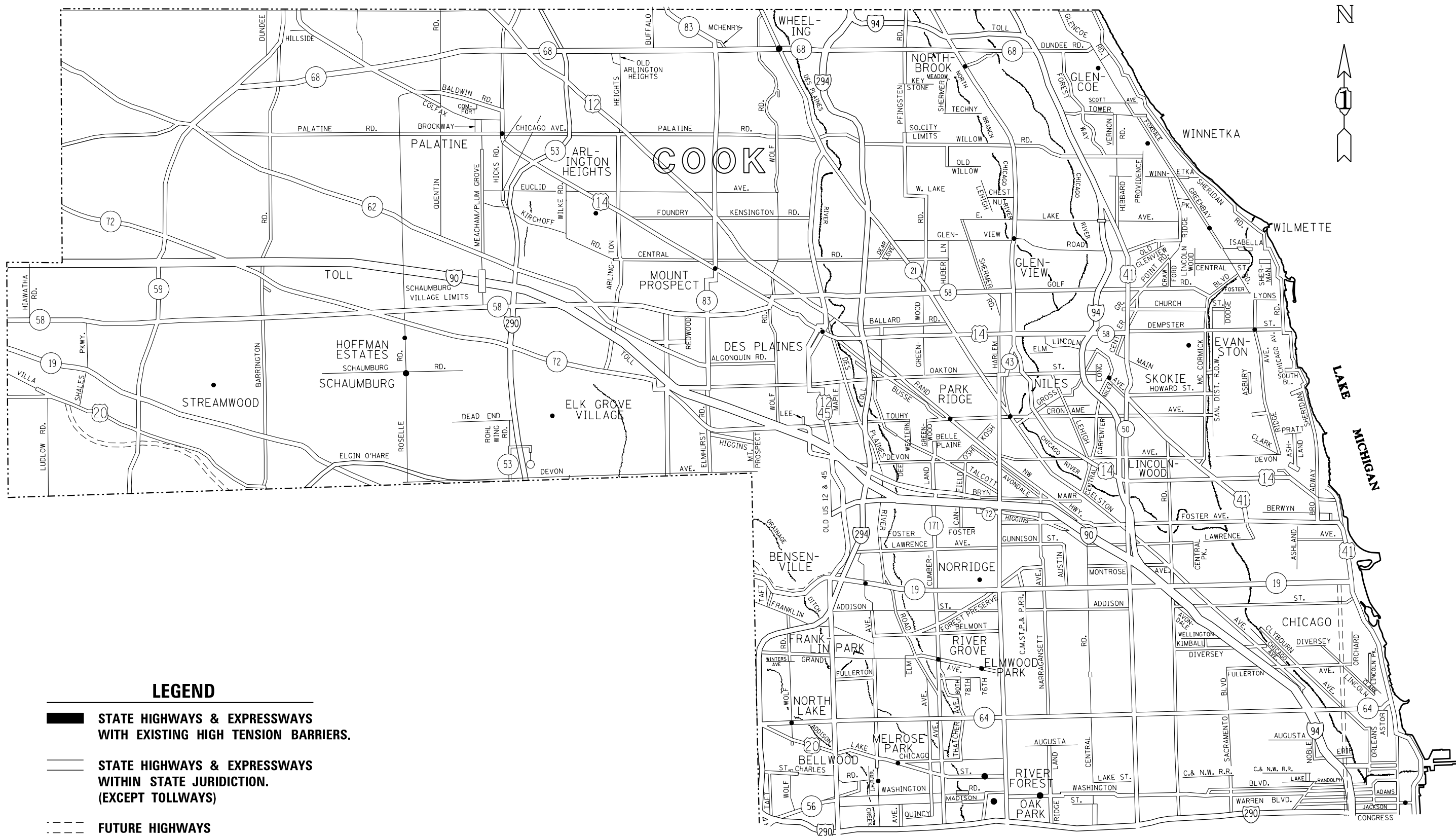
FILE NAME =	USER NAME = pyzzenowskirb	DESIGNED -	REVISED -
ct:\pw\work\p\id\pyzzenowskirb\0424692\12124515-sht-plan.dgn		DRAWN -	REVISED -
	PLOT SCALE = 100.0000' / in.	CHECKED -	REVISED -
	PLOT DATE = 1/21/2015	DATE -	REVISED -

**STATE OF ILLINOIS
DEPARTMENT OF TRANSPORTATION**



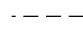

**CABLE BARRIER REPAIR
AT VARIOUS EXPRESSWAY MEDIANS
KANE COUNTY LOCATION MAP**

SCALE: SHEET NO. 4 OF 7 SHEETS STA. TO STA.

F.A. RTE.	SECTION	COUNTY	TOTAL SHEETS	SHEET NO.
VAR.	2015-0021	VARIOUS	15	7
			CONTRACT NO. 62A55	
FED. ROAD DIST. NO. 1 ILLINOIS FED. AID PROJECT				



LEGEND

-  STATE HIGHWAYS & EXPRESSWAYS WITH EXISTING HIGH TENSION BARRIERS.
-  STATE HIGHWAYS & EXPRESSWAYS WITHIN STATE JURISDICTION. (EXCEPT TOLLWAYS)
-  FUTURE HIGHWAYS
-  VARIOUS AGENCIES HIGHWAYS

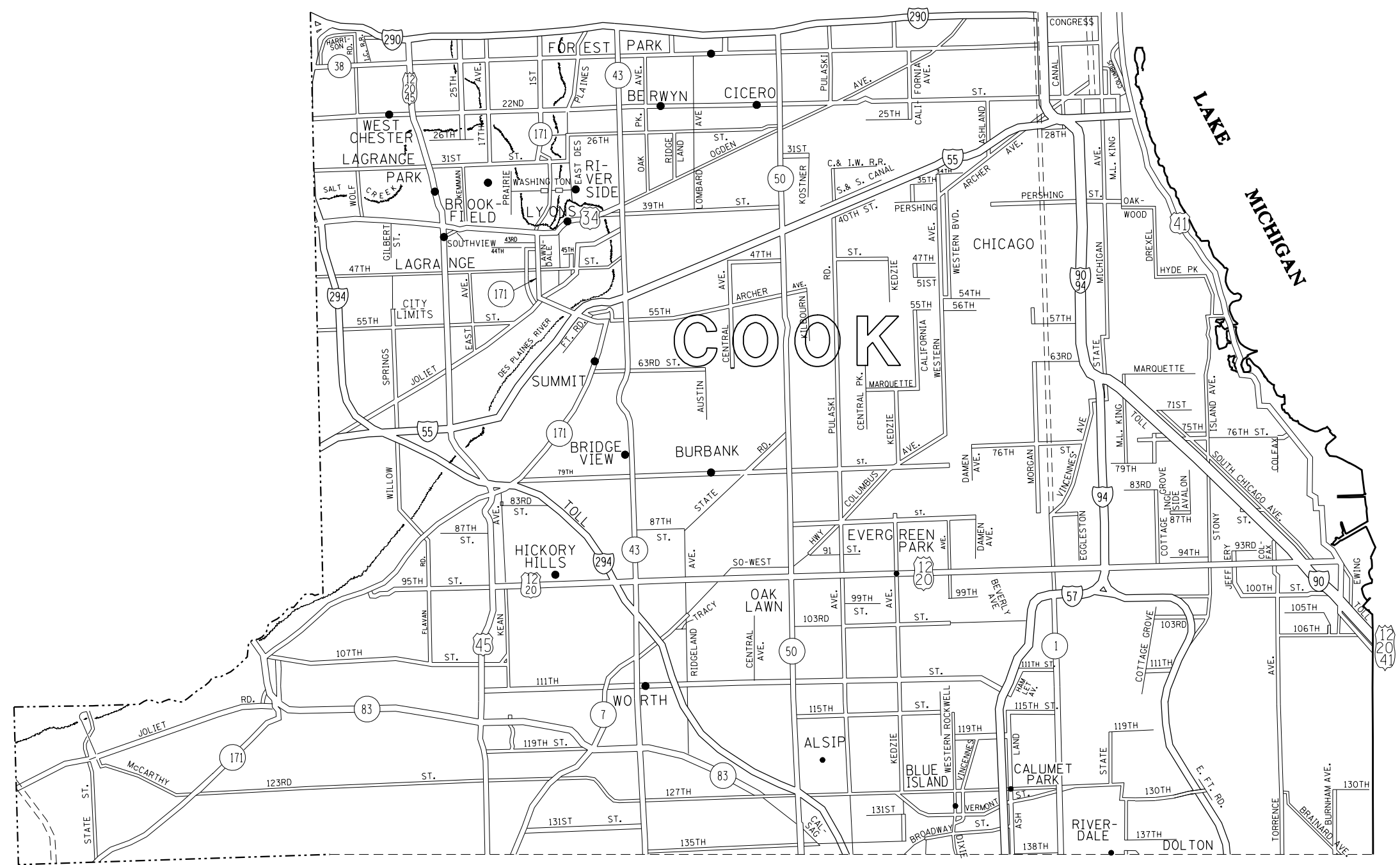
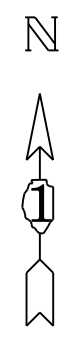
FILE NAME =	USER NAME = pyrzenowskirb	DESIGNED -	REVISED -
et:\pw\work\p\dot\pyrzenowskirb\042469	ND124515-sht-plan.dgn	DRAWN -	REVISED -
	PLOT SCALE = 100.0000' / in.	CHECKED -	REVISED -
	PLOT DATE = 1/21/2015	DATE -	REVISED -

**STATE OF ILLINOIS
DEPARTMENT OF TRANSPORTATION**

**CABLE BARRIER REPAIR
AT VARIOUS EXPRESSWAY MEDIANS
COOK COUNTY (NORTH) LOCATION MAP**

SCALE: SHEET NO. 5 OF 7 SHEETS STA. TO STA.

F.A. RTE.	SECTION	COUNTY	TOTAL SHEETS	SHEET NO.
VAR.	2015-0021	VARIOUS	15	8
			CONTRACT NO. 62A55	
FED. ROAD DIST. NO. 1 ILLINOIS FED. AID PROJECT				



LEGEND

- STATE HIGHWAYS & EXPRESSWAYS WITH EXISTING HIGH TENSION BARRIERS.
- STATE HIGHWAYS & EXPRESSWAYS WITHIN STATE JURISDICTION. (EXCEPT TOLLWAYS)
- FUTURE HIGHWAYS
- VARIOUS AGENCIES HIGHWAYS

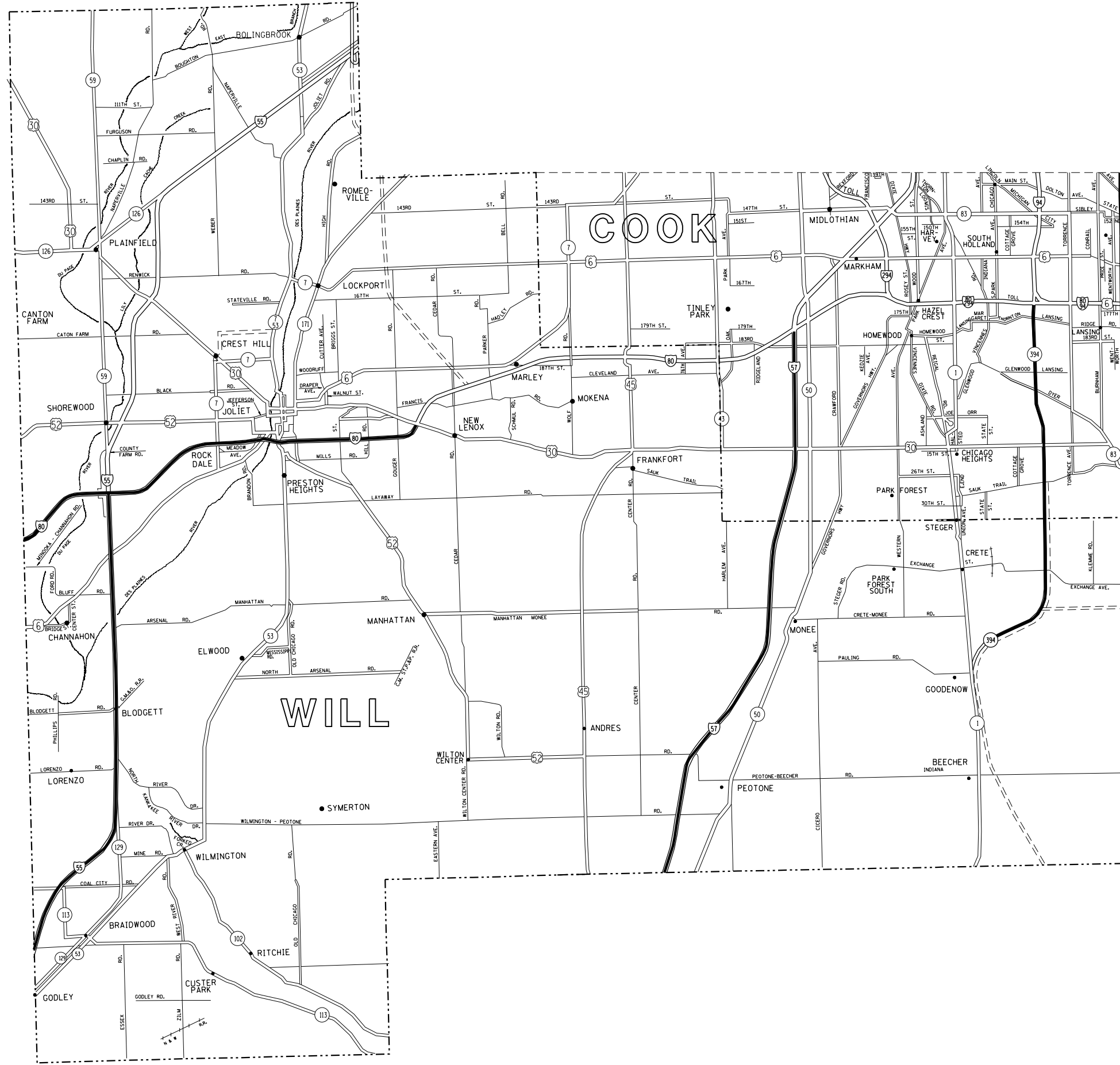
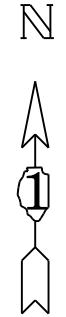
FILE NAME =	USER NAME = pyrzenowskirb	DESIGNED -	REVISED -
et:\pw\work\p1dot\pyrzenowskirb\042469	ND124515-sht-plan.dgn	DRAWN -	REVISED -
	PLOT SCALE = 100.0000' / in.	CHECKED -	REVISED -
	PLOT DATE = 1/21/2015	DATE -	REVISED -




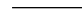
**STATE OF ILLINOIS
DEPARTMENT OF TRANSPORTATION**

**CABLE BARRIER REPAIR
AT VARIOUS EXPRESSWAY MEDIANS
COOK COUNTY (CENTRAL) LOCATION MAP**

SCALE: SHEET NO. 6 OF 7 SHEETS STA. TO STA.

F.A. RTE.	SECTION	COUNTY	TOTAL SHEETS	SHEET NO.
VAR.	2015-0021	VARIOUS	15	9
			CONTRACT NO. 62A55	
FED. ROAD DIST. NO. 1 ILLINOIS FED. AID PROJECT				



- LEGEND**
-  STATE HIGHWAYS & EXPRESSWAYS WITH EXISTING HIGH TENSION BARRIERS.
 -  STATE HIGHWAYS & EXPRESSWAYS WITHIN STATE JURISDICTION. (EXCEPT TOLLWAYS)
 -  FUTURE HIGHWAYS
 -  VARIOUS AGENCIES HIGHWAYS

FILE NAME =	USER NAME = pyrzenowskirb	DESIGNED -	REVISED -
ct:\pw\work\p1dot\pyrzenowskirb\042469	ND124515-sht-plan.dgn	DRAWN -	REVISED -
	PLOT SCALE = 100.0000' / in.	CHECKED -	REVISED -
	PLOT DATE = 1/21/2015	DATE -	REVISED -

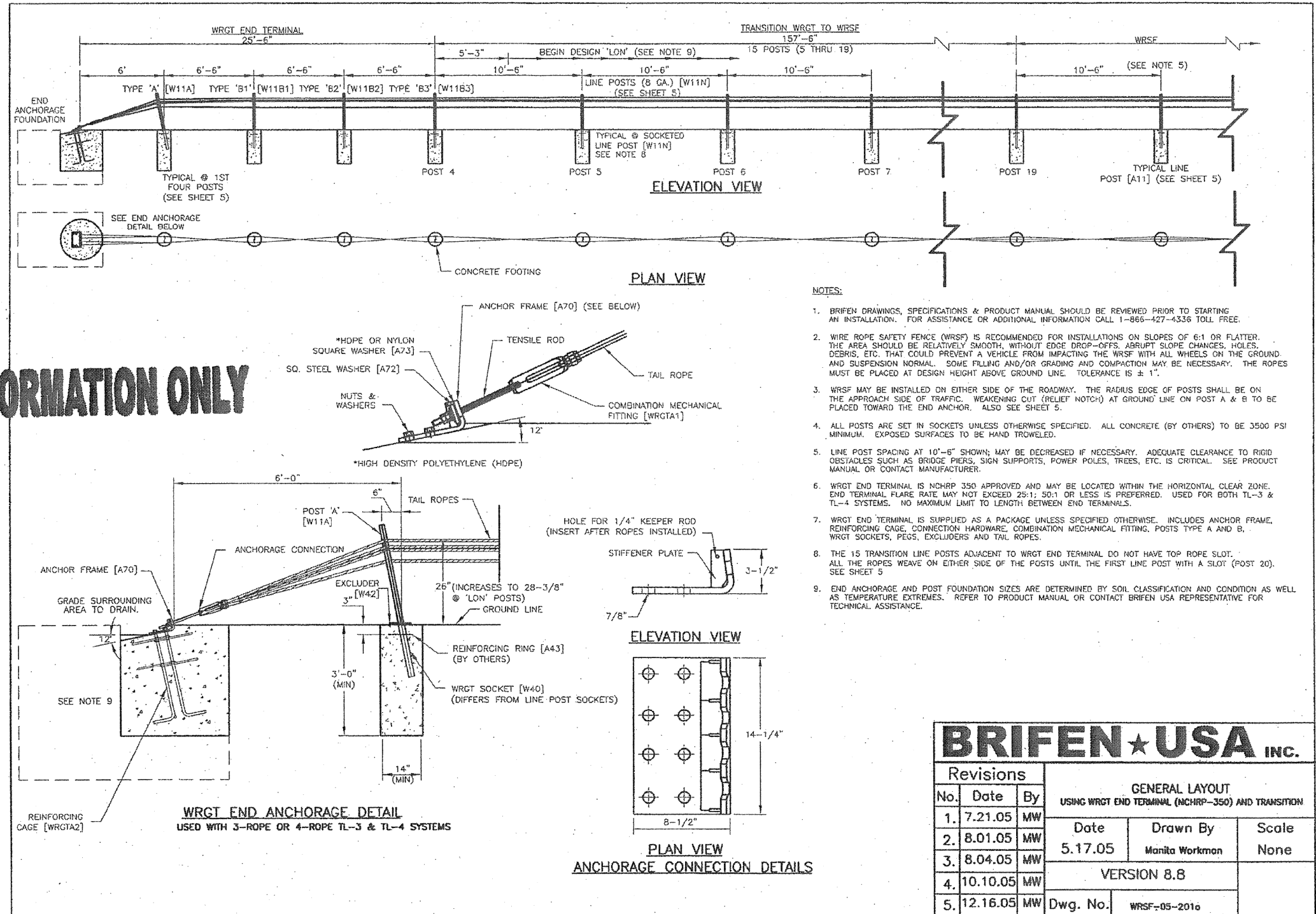
**STATE OF ILLINOIS
DEPARTMENT OF TRANSPORTATION**

**CABLE BARRIER REPAIR
AT VARIOUS EXPRESSWAY MEDIANS
WILL & COOK (SOUTH) COUNTIES LOCATION MAP**

SCALE: SHEET NO. 7 OF 7 SHEETS STA. TO STA.

F.A. RTÉ.	SECTION	COUNTY	TOTAL SHEETS	SHEET NO.
VAR.	2015-0021	VARIOUS	15	10
			CONTRACT NO. 62A55	
FED. ROAD DIST. NO. 1 ILLINOIS FED. AID PROJECT				

FOR INFORMATION ONLY



Revisions				GENERAL LAYOUT USING WRGT END TERMINAL (NCHRP-350) AND TRANSITION		
No.	Date	By		Date	Drawn By	Scale
1.	7.21.05	MW		5.17.05	Manita Workman	None
2.	8.01.05	MW				
3.	8.04.05	MW				
4.	10.10.05	MW				
5.	12.16.05	MW				
				VERSION 8.8		
				Dwg. No.	WRSF-05-201a	

FILE NAME =	USER NAME = pyrzenowski	DESIGNED -	REVISED - 04-03
et:\pw\work\p\pidot\pyrzenowski\bd042469	ND124515-shd-plan.dgn	DRAWN - D.W.S.	REVISED - J.A.F. 12-06
	PLOT SCALE = 100.0000' / in.	CHECKED -	REVISED - S.P.B. 01-07
	PLOT DATE = 1/21/2015	DATE - 11-96	REVISED - S.P.B. 12-09

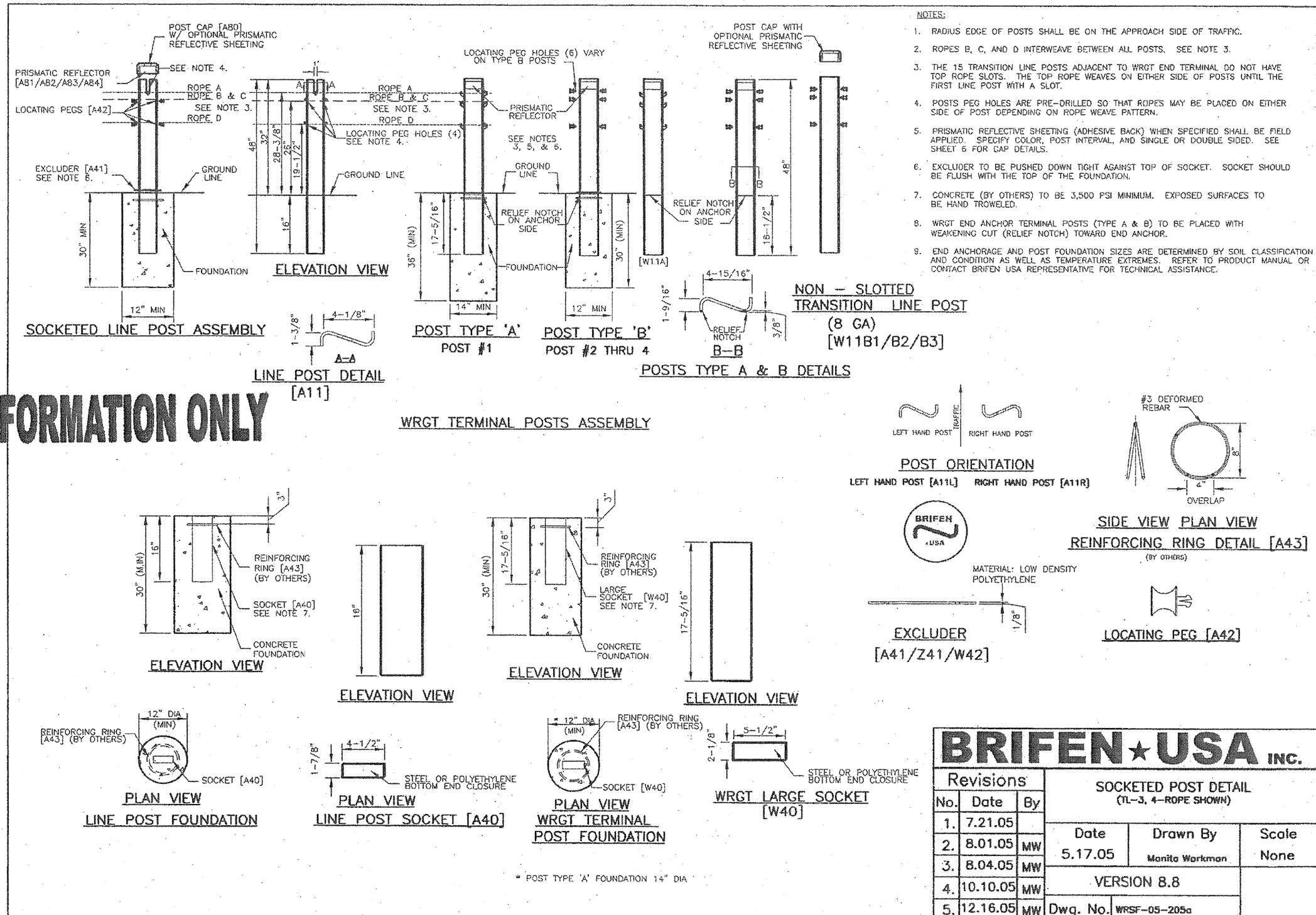
**STATE OF ILLINOIS
DEPARTMENT OF TRANSPORTATION**

**CABLE BARRIER REPAIR
AT VARIOUS EXPRESSWAY MEDIANS
HIGH TENSION GUARDRAIL DETAILS (BRIFEN USA)**

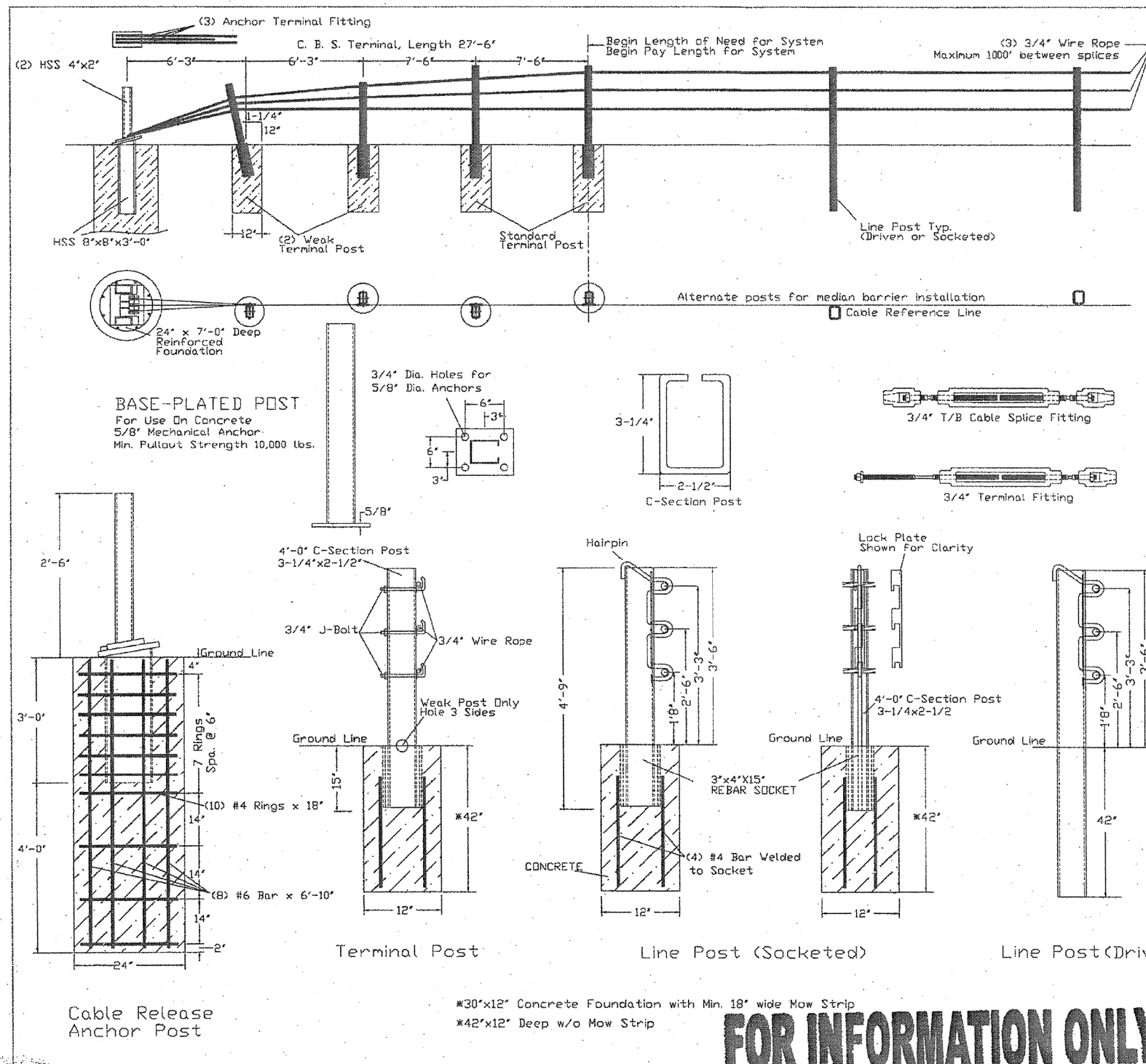
SCALE: NONE SHEET NO. 1 OF 2 SHEETS STA. TO STA.

F.A. RTE.	SECTION	COUNTY	TOTAL SHEETS	SHEET NO.
VAR.	2015-0021	WILL	15	11
CONTRACT NO. 62A55				
FED. ROAD DIST. NO. 1 ILLINOIS FED. AID PROJECT				

FOR INFORMATION ONLY



Revisions			SOCKETED POST DETAIL (1L-3, 4-ROPE SHOWN)		
No.	Date	By	Date	Drawn By	Scale
1.	7.21.05		5.17.05	Monita Workman	None
2.	8.01.05	MW			
3.	8.04.05	MW			
4.	10.10.05	MW			
5.	12.16.05	MW			
			VERSION 8.8		
			Dwg. No.	WRSF-05-205a	



REV: 6 DATE: 09/13/07 APPROVER: RV

GENERAL NOTES

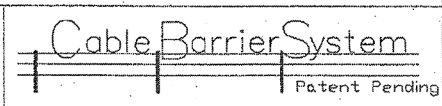
1. For additional information contact Gibraltar, Inc. at 1-800-495-8957, or see the manufacturer's product manual.
2. All concrete shall be minimum 2500 PSI.
3. Alternate Post for bi-directional traffic flow. IF installed for traffic in one direction install cables on traffic side of posts.
4. The Cable Barrier System shall be installed on shoulders or on medians with slopes of 6:1 or flatter. If installed on slopes steeper than 6:1 up to 4:1 the TL-4 system performs as a TL-3 and Gibraltar must be contacted for various guidelines related to placement.
5. The Cable Barrier System is accepted by the FHWA Test Level - 4
6. See the MUTCD for proper "Barrier" delineation
7. Rock Clause: Where solid rock is encountered:
 - a.) For socketed post, continue digging 12" diameter, 15' deep into rock or the required plan depth, whichever comes first.
 - b.) For driven post, core drill a 4" diameter hole 18" deep into rock or the required plan depth, whichever comes first.
 - c.) For Anchor post, continue digging 24" diameter, 30' deep into rock or the required plan depth, whichever comes first.
8. The Gibraltar cable barrier system shall be installed in NCHRP Report 350 standard compacted soil. Soil must be well drained.
9. Every component to be galvanized.

Cable Tension	
-10F	8000
0	7600
10	7200
20	6800
30	6400
40	6000
50	5600
60	5200
70	4800
80	4400
90	4000
100	3600
110	3200

Allowable Deviation from Chart +/- 10%

Deflection	Post Spacing
9'3"	30.FT
9'	28.FT
8'	20.FT
7'	12.FT
6'8"	10.FT

GIBALTAR
320 Southland Road
Burnet, Texas 78611
1-800-495-8957



SYSTEM: TL-4 SCALE: NTS DRAFTERS: EJ&TJ DATE: 09/13/07

FOR INFORMATION ONLY

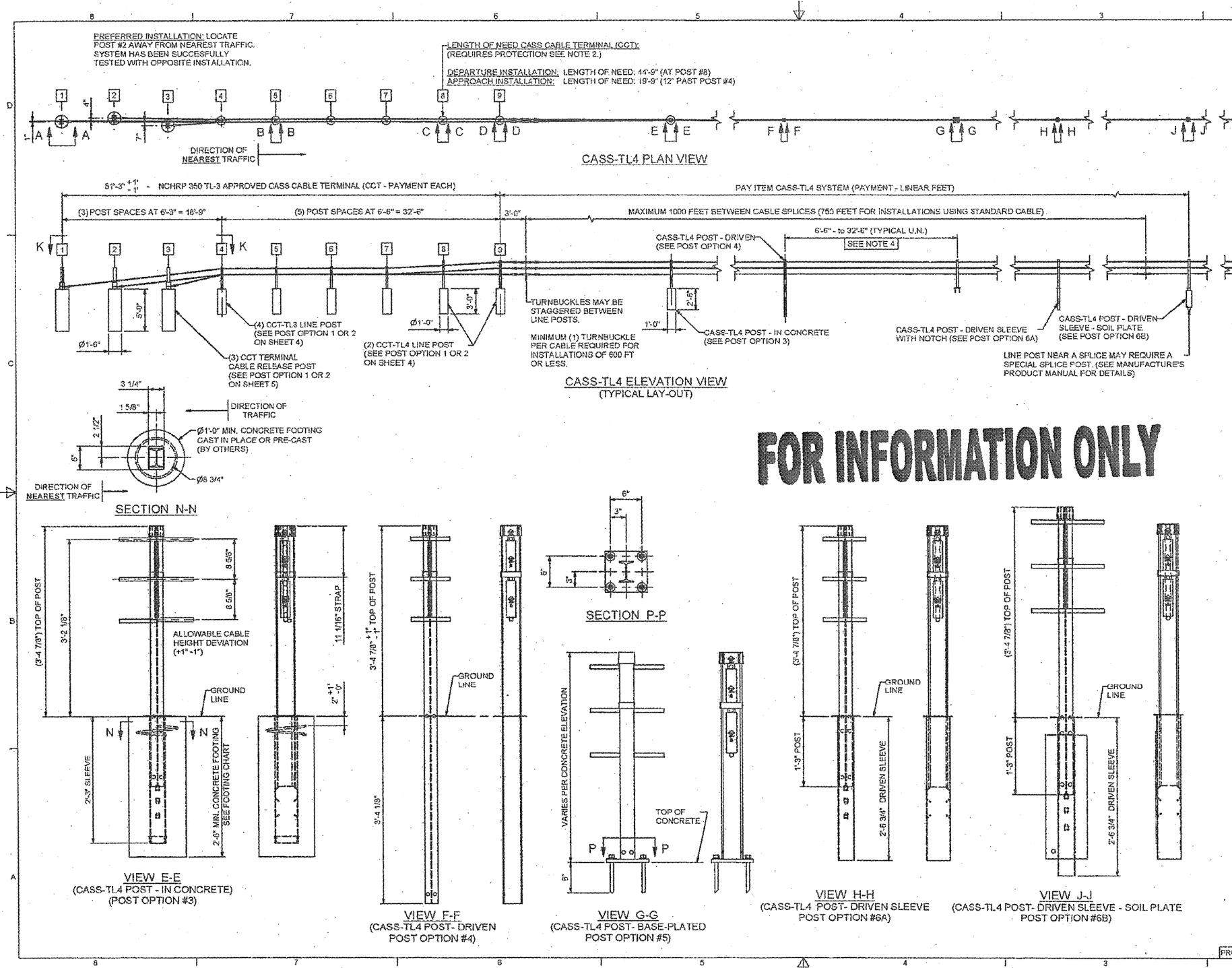
FILE NAME =	USER NAME = pyrozenowskirb	DESIGNED -	REVISED -
c:\pwwork\pwwork\pyrozenowskirb\d0424692	VDI24515-shd-plan.dgn	DRAWN -	REVISED -
	PLOT SCALE = 100.0000' / in.	CHECKED -	REVISED -
	PLOT DATE = 1/21/2015	DATE -	REVISED -

**STATE OF ILLINOIS
DEPARTMENT OF TRANSPORTATION**

**CABLE BARRIER REPAIR
AT VARIOUS EXPRESSWAY MEDIANS
HIGH TENSION GUARDRAIL DETAILS (GIBALTAR)**

F.A. RTE.	SECTION	COUNTY	TOTAL SHEETS	SHEET NO.
VAR.	2015-0021	VARIOUS	15	13
CONTRACT NO. 62A55				
FED. ROAD DIST. NO. 1 ILLINOIS FED. AID PROJECT				

SCALE: SHEET NO. OF SHEETS STA. TO STA.



FOR INFORMATION ONLY

- NOTES:**
- CASS-TL4 HAS BEEN SUCCESSFULLY TESTED TO NATIONAL COOPERATIVE HIGHWAY RESEARCH PROGRAM REPORT 350 TEST LEVEL 4 (NCHRP 350 TL4) AND ACCEPTED BY FHWA FOR VARIOUS POST SPACINGS. CASS CABLE TERMINAL (CCT) HAS BEEN SUCCESSFULLY TESTED AND APPROVED TO NCHRP TL3.
 - AN NCHRP 350 TL3 APPROVED TERMINAL (CCT) OR CASS-TL4 TRANSITION (VARIOUS) SHALL BE USED ON APPROACH AND DEPARTURE TERMINATIONS WHEN CASS-TL4 IS INSTALLED ON THE NATIONAL HIGHWAY SYSTEM (NHS). IF THE TERMINATION POINT IS LOCATED OUTSIDE THE CLEAR ZONE AND/OR PROTECTED BY OTHER MEANS (CRASHWORTHY BARRIER, TERMINALS, ETC.), A NON-NCHRP 350 TL3 ANCHOR (CCA) MAY BE USED ON APPROACH AND DEPARTURE TERMINATIONS.
 - CASS-TL4 SHALL BE INSTALLED ON SHOULDERS OR MEDIANS WITH SLOPES OF 6:1 OR FLATTER WITHOUT OBSTRUCTIONS, DEPRESSIONS, ETC. THAT MAY SIGNIFICANTLY AFFECT THE STABILITY OF AN ERRANT VEHICLE. GRADING OF SITE AND/OR APPROPRIATE FILL MATERIALS MAY BE REQUIRED. THE DESIGNER/INSTALLER SHALL "FLATTEN" OR "ROUND" VARIOUS TOPOGRAPHICAL INCONSISTENCIES THAT COULD INTERFERE WITH THE ABILITY OF THE INSTALLER TO CONSISTENTLY MAINTAIN THE DESIGN HEIGHT (IN RELATION TO THE TERRAIN) OF THE CABLES. PLEASE CONSULT THE CASS MANUAL(S) FOR INSTALLATIONS IN "DITCH SECTIONS".
 - CASS-TL4 POST SPACING MAY BE MODIFIED TO AVOID OBSTACLES THAT CONFLICT WITH THE INSTALLATION OF CASS-TL4 LINE POSTS. NO POST SPACE CAN EXCEED THE MAXIMUM POST SPACE LIMIT OF 32'-0" OR MAXIMUM POST SPACING ALLOWED BY PROJECT ENGINEER - WHICHEVER IS LESS. REDUCING OR INCREASING POST SPACING AFFECTS DEFLECTION. CASS-TL4 MAY BE LATERALLY TRANSFERRED AT A RATE NOT TO EXCEED 30:1.
 - POST FOUNDATIONS MAY BE DRILLED THROUGH EXISTING PAVEMENT. TRINITY MAY ALLOW THE USE OF ALTERNATE LINE POST FOOTINGS IF SYSTEM IS INSTALLED WITH AN ACCEPTABLE MOWSTRIP APPLICATION - PLEASE CONTACT TRINITY.
 - FOR AESTHETIC PURPOSES TRINITY RECOMMENDS ALL SLEEVES, DRIVEN POSTS, AND LOWER CABLE RELEASE POSTS TO BE INSTALLED REASONABLY PLUMB (APPROXIMATELY 1/8" PER FOOT).
 - ALL CONCRETE SHALL HAVE A MINIMUM COMPRESSIVE STRENGTH OF 3,000 P.S.I. PRIOR TO TENSIONING THE SYSTEM. TRINITY RECOMMENDS THE CONCRETE TO BE VIBRATED IN ACCORDANCE WITH THE LATEST APPLICABLE AGENCY SPECIFICATION.
 - CASS-TL4 SHALL BE INSTALLED IN WELL-DRAINED, COMPACTED, NCHRP REPORT 350 STANDARD SOILS. IF SOIL DOESN'T MEET THIS CLASSIFICATION, IF SOLID ROCK/CONCRETE IS ENCOUNTERED BELOW GRADE OR IF SOIL IS SUSCEPTIBLE TO SEVERE FREEZE/THAW CYCLES, PLEASE CONTACT TRINITY ABOUT ALTERNATE FOOTING DESIGNS. TRINITY SUGGESTS THE USE OF "MOW STRIPS" FOR EROSION PREVENTION AND EASE OF MAINTENANCE / INSTALLATION.
 - PLEASE SEE SPECIFYING AGENCY (OR MUTCD) FOR PROPER "BARRIER" DELINEATION.
 - PLEASE CONTACT TRINITY OR CONSULT THE DESIGN, INSTALLATION, OR REPAIR MANUAL(S) FOR ADDITIONAL INFORMATION.

MOW STRIP DETAIL*

MOW STRIP	DEPTH	WIDTH	FOOTING	TUBE SLEEVE	REBAR RING
NONE			30" MIN	27" MIN	YES
HMA	6" MIN.	3" MIN.	27" MIN	15" MIN.	NO
HMA	8" MIN.	3" MIN.	24" MIN	15" MIN.	NO
RC	3" MIN.	3" MIN.	24" MIN	15" MIN.	NO

CHART DOES NOT APPLY TO TERMINAL POSTS 1 THRU 8
 * MOW STRIP OR PAVEMENT
 HMA = HOT MIX ASPHALT (NOT RECYCLED ASPHALT PAVEMENT)
 RC = REINFORCED CONCRETE (3,000 P.S.I. MINIMUM)

No.	CASS-TL4 POST OPTIONS
1	CCT - TERMINAL POST 1 - 9 - IN CONCRETE
2	CCT - TERMINAL POST 1 - 9 - WITH SOIL PLATE
3	CASS-TL4 POST - IN CONCRETE
4	CASS-TL4 POST - DRIVEN
5	CASS-TL4 POST - BASE PLATED
6	CASS-TL4 POST - IN DRIVEN SLEEVE
	6A - DRIVEN SLEEVE - WITH NOTCH
	6B - DRIVEN SLEEVE - WITH SOIL PLATE

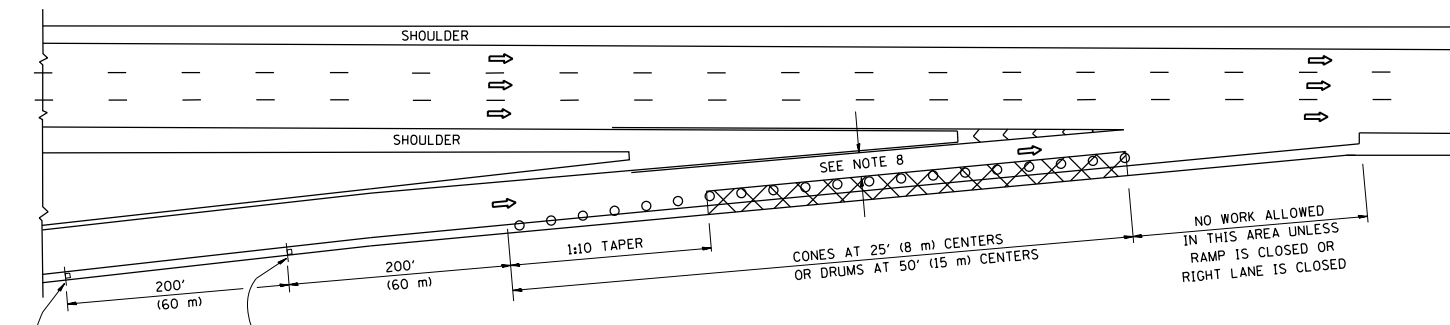
**CASS-TL4
3-CABLE GUARDRAIL
SAFETY SYSTEM**

TRINITY HIGHWAY PRODUCTS, LLC

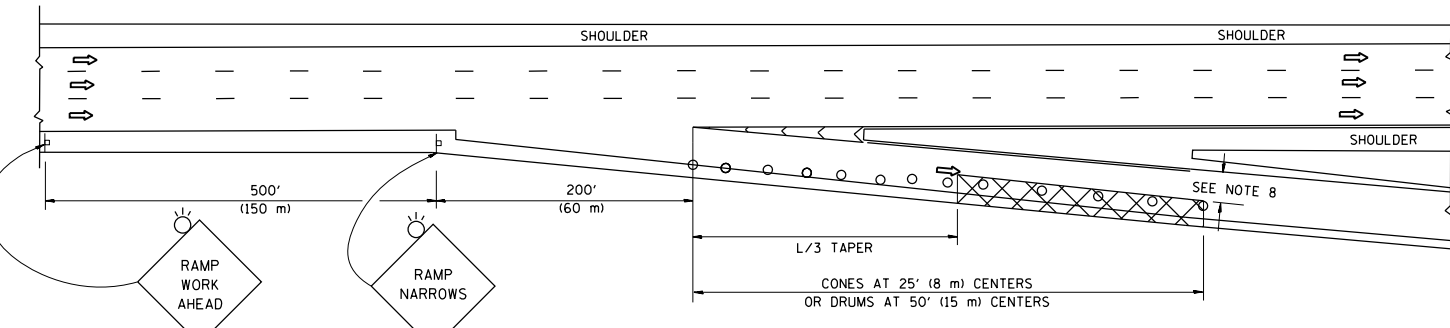
PROJ: CASS-TL4

GALV SPEC:
SHIPPING WT:
DRW: E.A.S. 4/11/2015
CHK: G.N. 4/11/2015
SHT: 1 OF 5 SIZE: D
QWSR: REV
SS-740 3

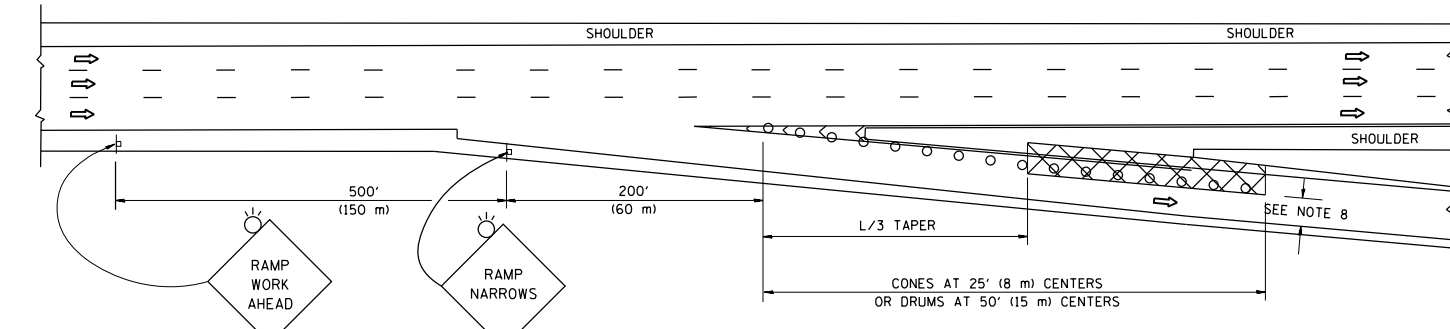
PARTIAL RAMP CLOSURE DETAILS



TYPICAL ENTRANCE RAMP



TYPICAL EXIT RAMP



TYPICAL EXIT RAMP

SYMBOLS

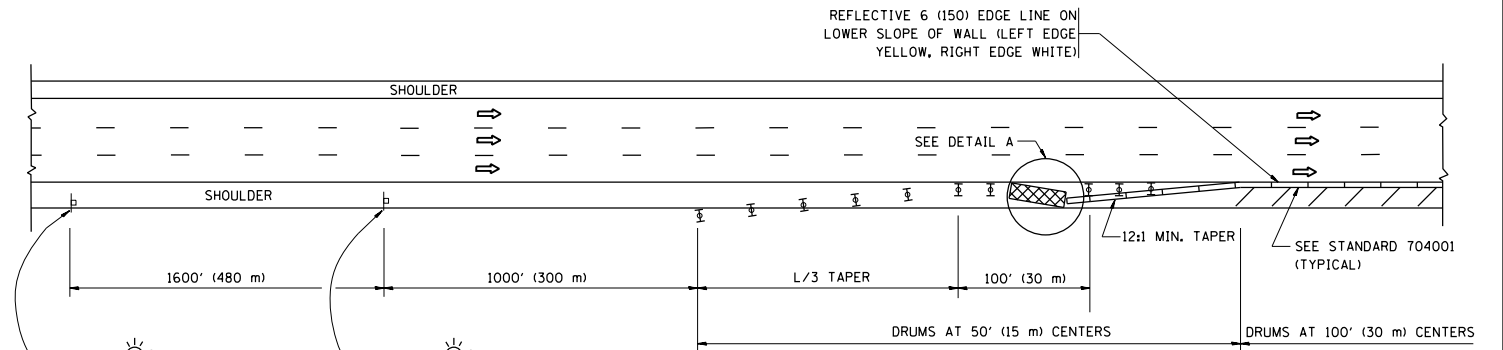
- ACTIVE WORK AREA
- SIGN ON PORTABLE OR PERMANENT SUPPORT
- FLAGGER WITH CONTROL SIGN
- TYPE II BARRICADE OR DRUM WITH STEADY BURN MONO-DIRECTIONAL LIGHT
- CONE, DRUM OR BARRICADE
- IMPACT ATTENUATOR OF TYPE AND TEST LEVEL SPECIFIED

GENERAL NOTES

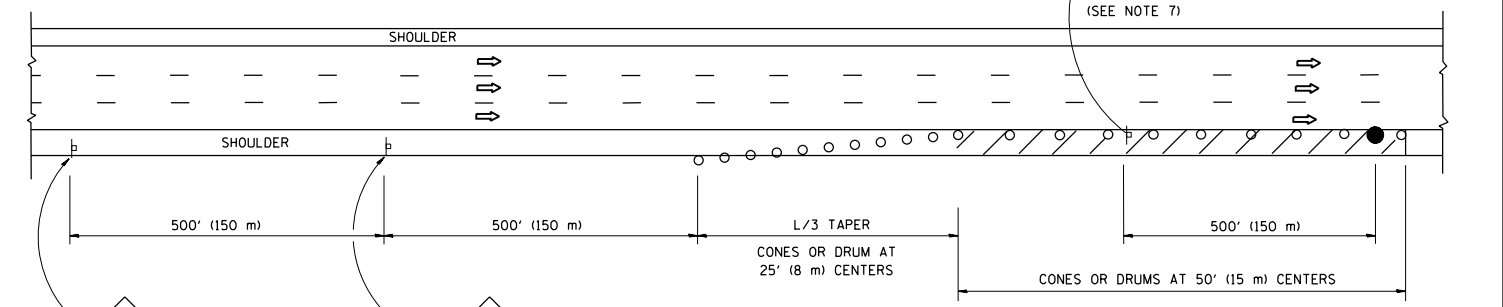
1. THE "L" DISTANCE EQUALS:

SPEED LIMIT	FORMULAS
45 mph (80 km/h) OR GREATER:	METRIC ENGLISH L=0.65(W)(S) L=(W)(S)
W = WIDTH OF OFFSET IN FEET (METERS) S = NORMAL POSTED SPEED MPH (KM/H)	
2. PLASTIC DRUMS WITH HIGH PERFORMANCE REFLECTIVE SHEETING AND STEADY BURNING LIGHTS ARE REQUIRED FOR ALL NIGHTIME CLOSURES.
3. ALL SIGNS SHALL BE POST MOUNTED IF THE CLOSURE TIME EXCEEDS FOUR DAYS.
4. FLASHING LIGHTS SHALL BE USED DURING THE HOURS OF DARKNESS AND SHALL BE INSTALLED ABOVE THE FIRST TWO SETS OF SIGNS.
5. THE IMPACT ATTENUATOR, TEMPORARY IS NOT REQUIRED WHEN THE TEMPORARY CONCRETE BARRIER WALL IS PROTECTED BY OR IS TIED INTO THE EXISTING GUARDRAIL. IF OFFSET IS LESS THAN 5 FEET USE NARROW USE TYPE DEVICE TO MEET NCHRP350/MASH.
6. AUTHORIZATION FROM THE DISTRICT'S BUREAU OF TRAFFIC IS REQUIRED FOR ALL FREEWAY CLOSURES.
7. THE FLAGGER AND FLAGGER SIGN ARE REQUIRED AT THE ABOVE WORK SITES WHEN:
 - a. FOUR OR MORE WORK VEHICLES ENTER THE TRAFFIC LANES IN A ONE HOUR PERIOD.
 - b. THE WORK AVTIVITY REQUIRES FREQUENT ENCROACHMENT INTO THE LANE OPEN TO TRAFFIC.
 THE FLAGGER SHALL BE STATIONED APPROXIMATELY 100' (30 m) TO 200' (60 m) IN ADVANCE OF THE WORKERS.
8. 12' MIN. WIDTH TANGENT SECTION
16' MIN. WIDTH CURVE SECTION.

SHOULDER CLOSURE DETAILS

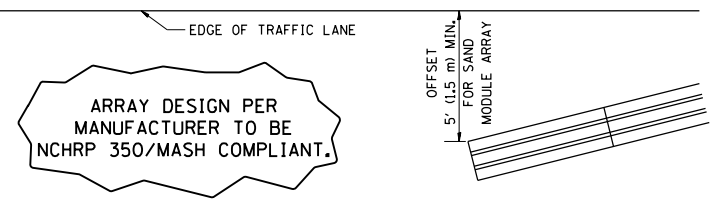


PERMANENT SHOULDER CLOSURE



DAYTIME SHOULDER CLOSURE

THIS DETAIL IS USED WHERE:
 1. VEHICLES, EQUIPMENT, WORKERS OR THEIR ACTIVITIES ENCROACH IN AN AREA CLOSER THAN 15' (4.5 m) TO THE EDGE OF PAVEMENT FOR A PERIOD IN EXCESS OF 15 MINUTES.



ALL DIMENSIONS ARE IN INCHES (MILLIMETERS) UNLESS OTHERWISE SHOWN.

FILE NAME =	USER NAME = pyrzenowski	DESIGNED -	REVISED - J.A.F. 12-06
ca:\pw\work\p1dot\pyrzenowski\b042469	ND124515-sht-plan.dgn	DRAWN - D.W.S.	REVISED - S.P.B. 01-07
	PLOT SCALE = 100.0000' / 1"	CHECKED -	REVISED - S.P.B. 12-09
	PLOT DATE = 1/23/2015	DATE - 11-96	REVISED - M.D. 06-13

STATE OF ILLINOIS
DEPARTMENT OF TRANSPORTATION

TRAFFIC CONTROL DETAILS FOR FREEWAY
SHOULDER CLOSURES AND PARTIAL RAMP CLOSURES

SCALE: NONE SHEET NO. 1 OF 1 SHEETS STA. TO STA.

F.A. RTE.	SECTION	COUNTY	TOTAL SHEETS	SHEET NO.
VAR.	2015-0021	VARIOUS	15	15
TC-17		CONTRACT NO. 62A55		
FED. ROAD DIST. NO. 1 ILLINOIS FED. AID PROJECT				