

STATE OF ILLINOIS
DEPARTMENT OF TRANSPORTATION
DIVISION OF HIGHWAYS

**PROPOSED
HIGHWAY PLANS**

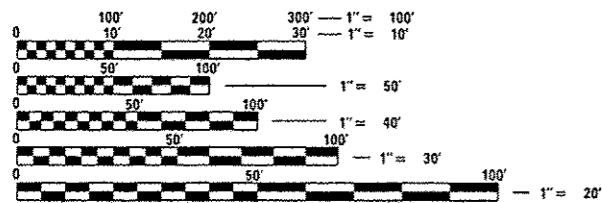
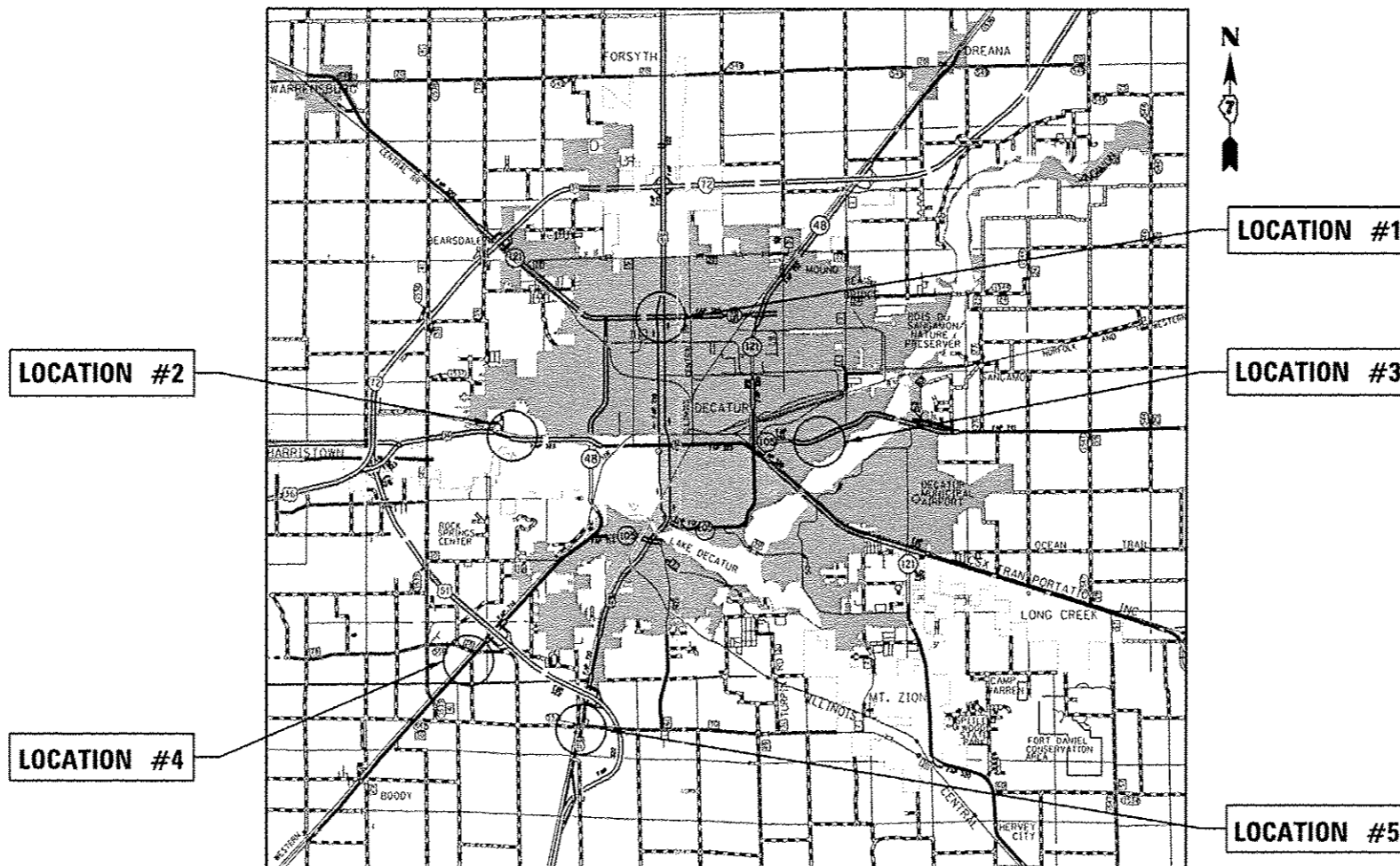
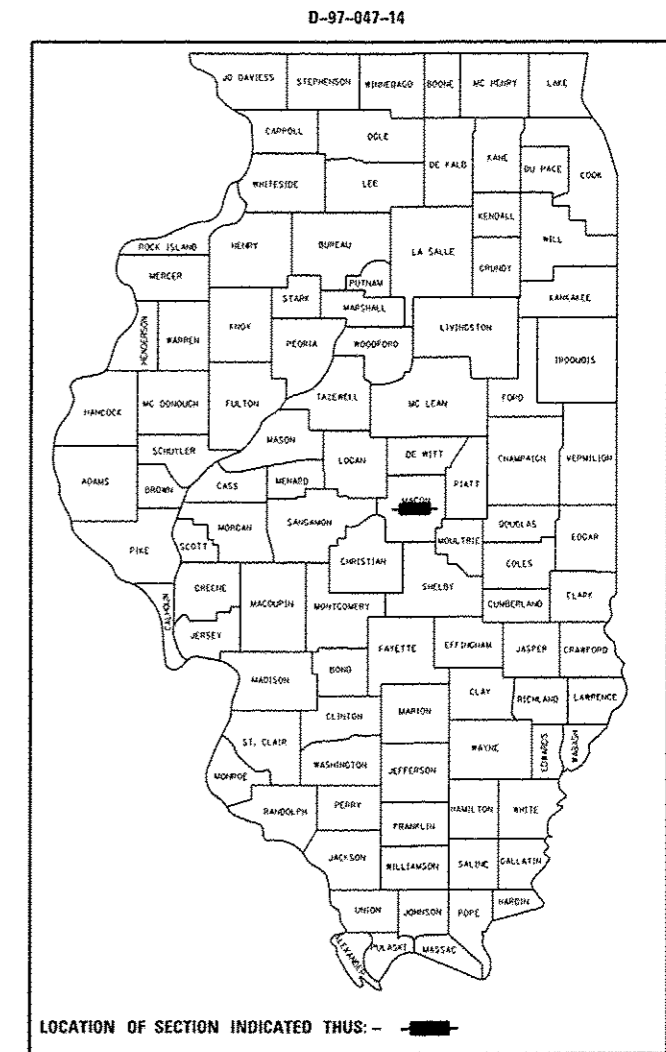
VARIOUS ROUTES
SECTION D7 HMA RESURF 2015-8

INTERMITTENT RESURFACING
MACON COUNTY

C-97-093-14

F.A. RTE.	SECTION	COUNTY	TOTAL SHEETS	SHEET NO.
		MACON	6	1
*D7 HMA RESURF 2015-8		ILLINOIS	CONTRACT NO. 74687	

FOR INDEX OF SHEETS, SEE SHEET NO. 2



FULL SIZE PLANS HAVE BEEN PREPARED USING STANDARD ENGINEERING SCALES. REDUCED SIZED PLANS WILL NOT CONFORM TO STANDARD SCALES. IN MAKING MEASUREMENTS ON REDUCED PLANS, THE ABOVE SCALES MAY BE USED.

J.U.L.I.E.
JOINT UTILITY LOCATION INFORMATION FOR EXCAVATION
1-800-892-0123
OR 811

PROJECT ENGINEER: MARK DAUGHERTY
PROJECT MANAGER: BRIAN BIERMAN

CONTRACT NO. 74687

STATE OF ILLINOIS
DEPARTMENT OF TRANSPORTATION
DIVISION OF HIGHWAYS

SUBMITTED 12-23 2014
Roger E. [Signature]
DEPUTY DIRECTOR OF HIGHWAYS, REGION ENGINEER

May 20 2015
John D. Barozzi, P.E.
ENGINEER OF DESIGN AND ENVIRONMENT

May 20 2015
Omar Osman, P.E.
DIRECTOR OF HIGHWAYS, CMEF ENGINEER

PRINTED BY THE AUTHORITY
OF THE STATE OF ILLINOIS

GENERAL NOTES

ALL LOCATIONS SHALL BE INLAYED WITH 1 1/2" OF HOT-MIX ASPHALT SURFACE COURSE AS DIRECTED BY THE ENGINEER.

MILLED SECTIONS SHALL NOT BE OPEN TO TRAFFIC. HMA SURFACE COURSE SHALL BE CONSTRUCTED PRIOR TO OPENING TO TRAFFIC.

THE RESIDENT ENGINEER SHALL BE THE SOLE JUDGE CONCERNING THE CURING TIME FOR THE HOT-MIX ASPHALT LIFT.

THE CONTRACTOR SHALL PROVIDE INTERNET ACCESSIBILITY TO THE HOT-MIX ASPHALT PLANT QUALITY CONTROL LAB SO THAT HOT-MIX ASPHALT PLANT REPORTS CAN BE E-MAILED TO THE DISTRICT HEADQUARTERS. THIS WORK SHALL BE INCLUDED IN THE COST OF ALL HOT-MIX ASPHALT ITEMS.

VIBRATORY ROLLERS IN DYNAMIC MODE WILL NOT BE PERMITTED AT LOCATIONS #1 AND #3.

THE FOLLOWING MIXTURE REQUIREMENTS ARE APPLICABLE FOR THIS PROJECT:

APPLICATION	AC/PG	DESIGN AIR VOIDS	MIXTURE COMPOSITION	FRICTION AGGREGATE
HMA SURFACE COURSE, MIX "D", N90	SBS PG 70-22	4.0% & N=90	1L - 9.5	MIX D

INDEX OF SHEETS

SHEET NO	TITLE
1	COVER SHEET
2	GENERAL NOTES, INDEX OF SHEETS, LIST OF STANDARDS, PAVING SCHEDULE
3	SUMMARY OF QUANTITIES
4	LOCATION #1
5	LOCATIONS #2 AND #3
6	LOCATIONS #4 AND #5

THE FOLLOWING STANDARDS ARE A PART OF THESE PLANS AND ARE INCLUDED FOLLOWING THE LAST NUMBERED SHEET OF THE PLANS.

000001-06	STANDARD SYMBOLS, ABBREVIATIONS, AND PATTERNS
001006	DECIMAL OF AN INCH AND OF A FOOT
701201-04	LANE CLOSURE, 2L, 2W, DAY ONLY, FOR SPEEDS >= 45 MPH
701311-03	LANE CLOSURE 2L, 2W MOVING OPERATIONS - DAY ONLY
701421-07	LANE CLOSURE, MULTILANE, DAY OPERATIONS ONLY, FOR SPEEDS >= 45 MPH TO 55 MPH
701426-07	LANE CLOSURE, MULTILANE, INTERMITTENT OR MOVING OPER., FOR SPEEDS >= 45 MPH
701427-03	LANE CLOSURE, MULTILANE, INTERMITTENT OR MOVING OPER., FOR SPEEDS <= 40 MPH
701601-09	URBAN LANE CLOSURE, MULTILANE, 1W OR 2W WITH NONTRAVERSABLE MEDIAN
701606-10	URBAN SINGLE LANE CLOSURE, MULTILANE, 2W WITH MOUNTABLE MEDIAN
701901-04	TRAFFIC CONTROL DEVICES

PAVING SCHEDULE

LOCATION	TOTAL AREA	BITUMINOUS MATERIALS (PRIME COAT)	HOT-MIX ASPHALT SURFACE REMOVAL, 1 1/2"	HMA SURFACE COURSE, MIX "D", N90	PAINT PAVEMENT MARKING - LINE 4"
	SQ YD	LB	SQ YD	TON	FT
1	1400	630	1400	118	285
2	2933	1320	2933	246	2750
3	752	338	752	63	769
4	667	300	667	56	625
5	2413	1086	2413	203	2238
	TOTALS:	3674	8165	686	6667

6/15/14

SUMMARY OF QUANTITIES			TOTAL QUANTITIES	CONSTRUCTION TYPE CODE		
CODE NO	ITEM	UNIT		0005 URBAN 100% STATE		
40600275	BITUMINOUS MATERIALS (PRIME COAT)	POUND	3674	3674		
40603345	HOT-MIX ASPHALT SURFACE COURSE, MIX "D", N90	TON	686	686		
44000155	HOT-MIX ASPHALT SURFACE REMOVAL, 1 1/2"	SQ YD	8165	8165		
67100100	MOBILIZATION	L SUM	1	1		
70100310	TRAFFIC CONTROL AND PROTECTION, STANDARD	L SUM	1	1		
	701421					
70100450	TRAFFIC CONTROL AND PROTECTION, STANDARD	L SUM	1	1		
	701201					
70102625	TRAFFIC CONTROL AND PROTECTION, STANDARD	L SUM	1	1		
	701606					
70102630	TRAFFIC CONTROL AND PROTECTION, STANDARD	L SUM	1	1		
	701601					
* 78001110	PAINT PAVEMENT MARKING - LINE 4"	FOOT	6667	6667		
	9					

*

* SPECIALTY ITEM

FILE NAME =	USER NAME = tsealegsk	DESIGNED -	REVISED -	STATE OF ILLINOIS DEPARTMENT OF TRANSPORTATION	SUMMARY OF QUANTITIES	F.A. RTE.	SECTION	COUNTY	TOTAL SHEETS	SHEET NO.
c:\p\work\1401\dot\conleagsk\0297140\07	4687-ah\ksoq.dgn	DRAWN -	REVISED -			07 HMA RESURF 2015-8	MACON	6	3	
Default	PLOT SCALE = 100.0000' / 1"	CHECKED -	REVISED -			CONTRACT NO. 74687				
	PLOT DATE = 12/23/2014	DATE -	REVISED -			SCALE:	SHEET OF SHEETS	STA. TO STA.	ILLINOIS FED. AID PROJECT	



LOCATION 1: OLD BUSINESS 51

LANE	DISTANCE FROM CHRISTINE/PERSHING	LENGTH	WIDTH	AREA	STRIPING
		(FT)	(FT)	(SQ YD)	(FT)
NBPL	40' NORTH OF CHRISTINE	100	12	133	25
NBPL	210' NORTH OF CHRISTINE	30	12	40	8
NBPL	330' NORTH OF CHRISTINE	230	12	307	58
NBDL	40' NORTH OF CHRISTINE	40	12	53	10
SBPL	JUST SOUTH OF BRIDGE SOUTH OF CHRISTINE	80	12	107	20
SBDL	JUST SOUTH OF BRIDGE SOUTH OF CHRISTINE	80	12	107	20
SBCL	30' SOUTH OF CHRISTINE	30	6	20	8
SBCL	145' SOUTH OF CHRISTINE	55	6	37	14
SBCL	420' SOUTH OF CHRISTINE	40	6	27	10
SBCL	535' SOUTH OF CHRISTINE	55	6	37	14
SBPL	680' SOUTH OF CHRISTINE	70	12	93	18
SBPL	760 SOUTH OF CHRISTINE	50	12	67	13
SBPL	380' SOUTH OF CHRISTINE	80	12	107	20
SBLT	230' SOUTH OF PERSHING	50	12	67	13
SBLT	330' SOUTH OF PERSHING	150	12	200	38
TOTALS:				1400	285

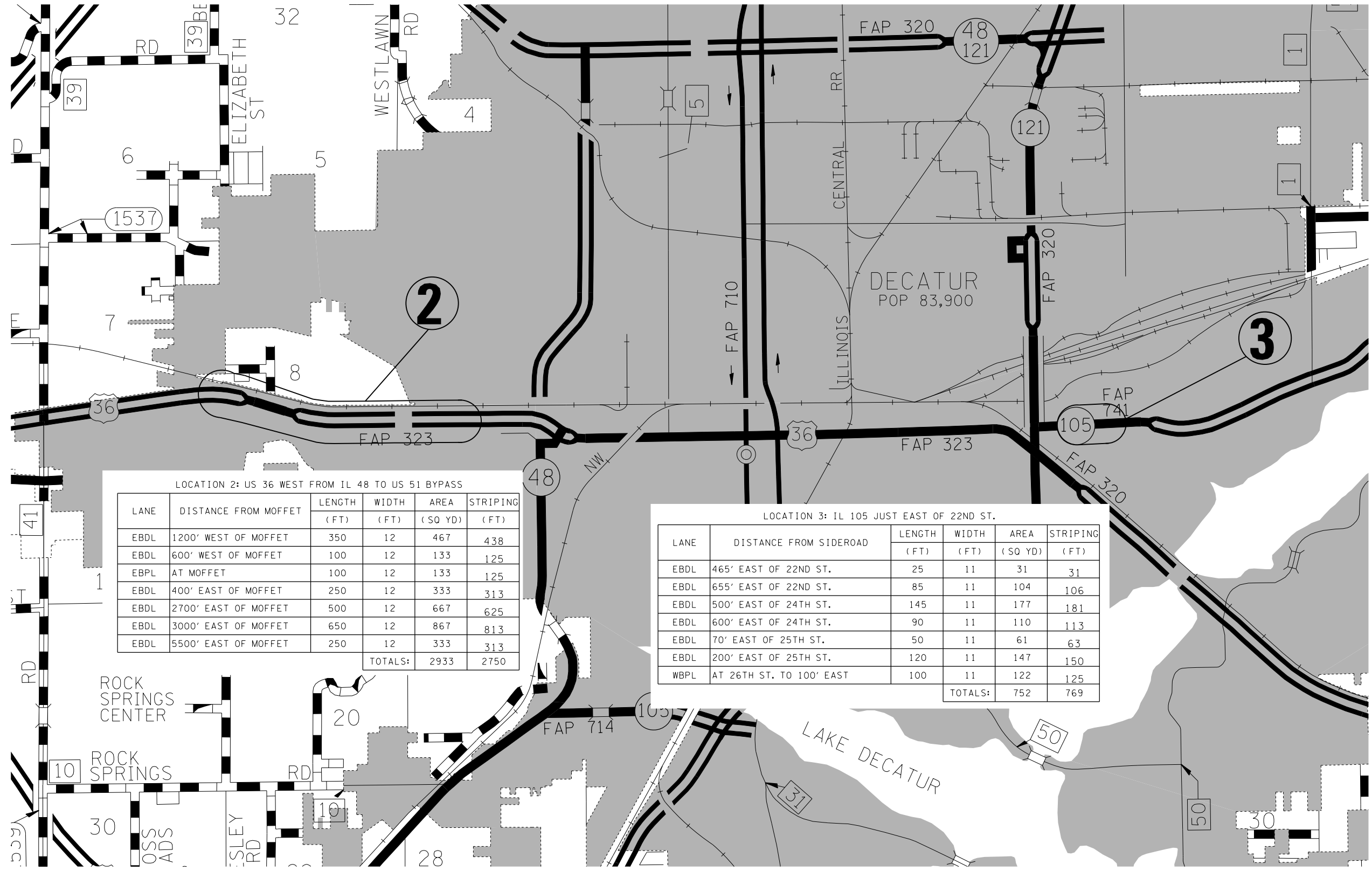


FILE NAME =	USER NAME = teasleyk	DESIGNED -	REVISED -
c:\pw\work\p\midot\teasleyk\d0397148\074687-sh1-locmap.dgn		DRAWN -	REVISED -
Default	PLOT SCALE = 100.0000' / 1" =	CHECKED -	REVISED -
	PLOT DATE = 12/23/2014	DATE -	REVISED -

**STATE OF ILLINOIS
DEPARTMENT OF TRANSPORTATION**

LOCATION #1			
SCALE:	SHEET	OF SHEETS	STA. TO STA.

F.A. RTE.	SECTION	COUNTY	TOTAL SHEETS	SHEET NO.
	D7 HMA RESURF 2015-8	MACON	6	4
			CONTRACT NO. 74687	
ILLINOIS FED. AID PROJECT				



LOCATION 2: US 36 WEST FROM IL 48 TO US 51 BYPASS

LANE	DISTANCE FROM MOFFET	LENGTH (FT)	WIDTH (FT)	AREA (SQ YD)	STRIPING (FT)
EBDL	1200' WEST OF MOFFET	350	12	467	438
EBDL	600' WEST OF MOFFET	100	12	133	125
EBPL	AT MOFFET	100	12	133	125
EBDL	400' EAST OF MOFFET	250	12	333	313
EBDL	2700' EAST OF MOFFET	500	12	667	625
EBDL	3000' EAST OF MOFFET	650	12	867	813
EBDL	5500' EAST OF MOFFET	250	12	333	313
TOTALS:				2933	2750

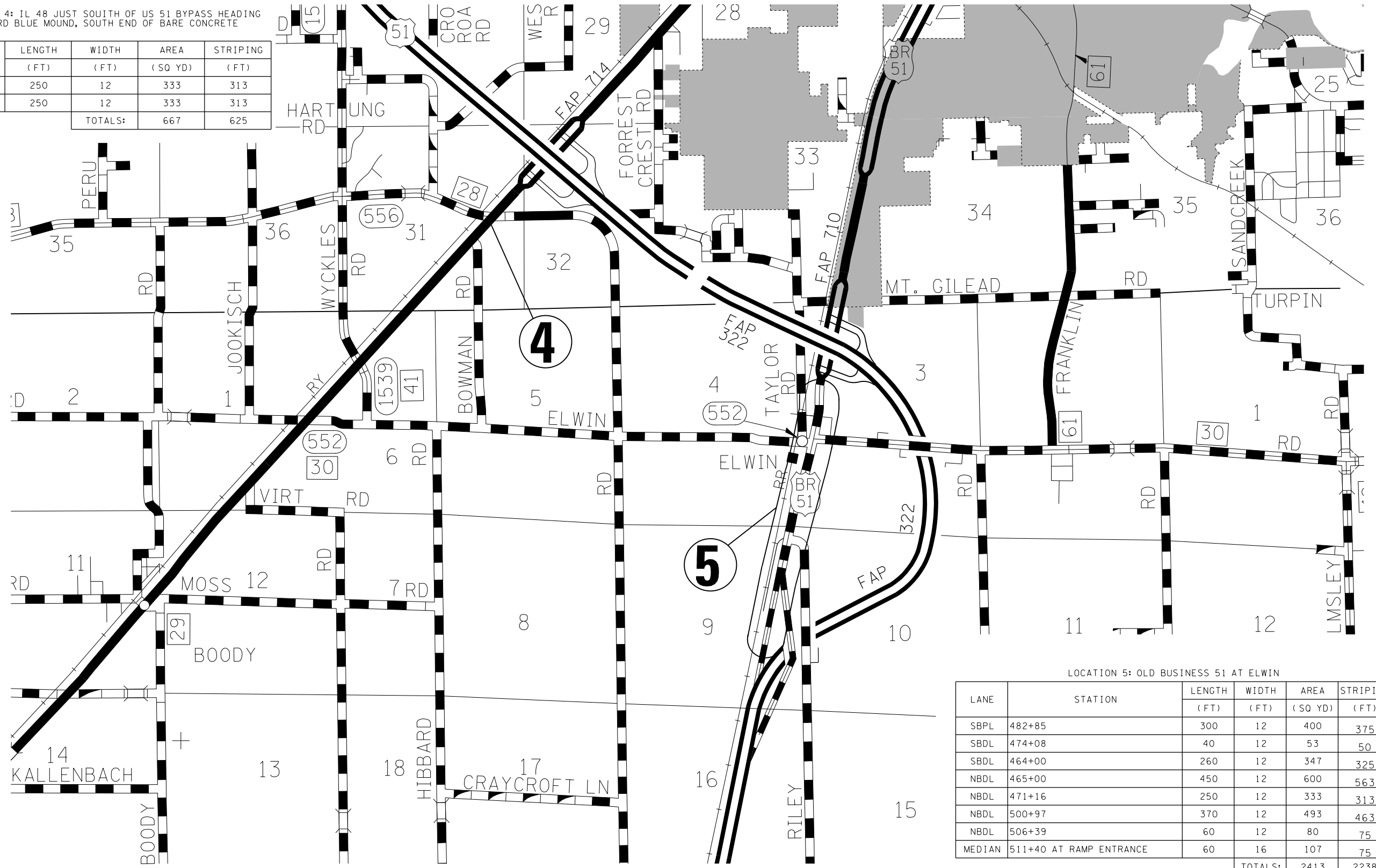
LOCATION 3: IL 105 JUST EAST OF 22ND ST.

LANE	DISTANCE FROM SIDEROAD	LENGTH (FT)	WIDTH (FT)	AREA (SQ YD)	STRIPING (FT)
EBDL	465' EAST OF 22ND ST.	25	11	31	31
EBDL	655' EAST OF 22ND ST.	85	11	104	106
EBDL	500' EAST OF 24TH ST.	145	11	177	181
EBDL	600' EAST OF 24TH ST.	90	11	110	113
EBDL	70' EAST OF 25TH ST.	50	11	61	63
EBDL	200' EAST OF 25TH ST.	120	11	147	150
WBPL	AT 26TH ST. TO 100' EAST	100	11	122	125
TOTALS:				752	769



LOCATION 4: IL 48 JUST SOUTH OF US 51 BYPASS HEADING TOWARD BLUE MOUND, SOUTH END OF BARE CONCRETE

LANE	LENGTH (FT)	WIDTH (FT)	AREA (SQ YD)	STRIPING (FT)
NB	250	12	333	313
SB	250	12	333	313
TOTALS:			667	625



LOCATION 5: OLD BUSINESS 51 AT ELWIN

LANE	STATION	LENGTH (FT)	WIDTH (FT)	AREA (SQ YD)	STRIPING (FT)
SBPL	482+85	300	12	400	375
SBDL	474+08	40	12	53	50
SBDL	464+00	260	12	347	325
NBDL	465+00	450	12	600	563
NBDL	471+16	250	12	333	313
NBDL	500+97	370	12	493	463
NBDL	506+39	60	12	80	75
MEDIAN	511+40 AT RAMP ENTRANCE	60	16	107	75
TOTALS:				2413	2238

FILE NAME =	USER NAME = teasleyck	DESIGNED -	REVISED -
c:\pwork\work\pwork\teasleyck\d0397148\074687-sh1-locmap.dgn		DRAWN -	REVISED -
Default	PLOT SCALE = 100.0000' / 1" =	CHECKED -	REVISED -
	PLOT DATE = 12/23/2014	DATE -	REVISED -

STATE OF ILLINOIS
DEPARTMENT OF TRANSPORTATION

LOCATIONS #4 AND #5

SCALE: SHEET OF SHEETS STA. TO STA.

F.A. RTE.	SECTION	COUNTY	TOTAL SHEETS	SHEET NO.
D7 HMA RESURF 2015-8		MACON	6	6
CONTRACT NO. 74687			ILLINOIS FED. AID PROJECT	