

029

STATE OF ILLINOIS  
DEPARTMENT OF TRANSPORTATION

FAP RTE.	SECTION	COUNTY	TOTAL SHEETS	SHEET NO.
681	(114)RS-5, (115)RS-4	LIVINGSTON	25	1
ILLINOIS				

**INDEX OF SHEETS**

- 1 COVER SHEET
- 2 GENERAL NOTES
- 3-6 SUMMARY OF QUANTITIES
- 7-8 TYPICAL SECTIONS
- 9 PERMANENT SURVEY MARKER TABLE
- 10 LINE DIAGRAM
- 11-14 SCHEDULES
- 15-19 DRAINAGE PROFILES
- 20-25 DETAILS

**LIST OF ILLINOIS DOT HIGHWAY STANDARDS**

- 000001-07 STANDARD SYMBOLS, ABBREVIATIONS AND PATTERNS
- 001006 DECIMAL OF AN INCH AND OF A FOOT
- 406201-01 MAILBOX TURNOUT
- 542001-06 CONCRETE END SECTIONS FOR PIPE CULVERTS  
15" (375 mm) THRU 84" (2100 mm) DIAMETER
- 542011-02 CONCRETE END SECTIONS FOR ELLIPTICAL PIPE CULVERTS 15" (375mm) THRU  
72" (1800 mm) EQUIVALENT DIAMETER
- 542311-07 TRAVERSABLE PIPE GRATE FOR CONCRETE END SECTION
- 642006 SHOULDER RUMBLE STRIPS, 8 INCH
- 701001-02 OFF-ROAD OPERATIONS 2L, 2W, MORE THAN 15' (4.5 m) AWAY
- 701006-05 OFF-ROAD OPERATIONS 2L, 2W, 15' (4.5 m) TO 24" (600 mm) FROM  
PAVEMENT EDGE
- 701301-04 LANE CLOSURE, 2L, 2W, SHORT TIME OPERATIONS
- 701306-04 LANE CLOSURE, 2L, 2W, SLOW MOVING OPERATIONS DAY ONLY,  
FOR SPEEDS ≥ 45 MPH
- 701311-03 LANE CLOSURE, 2L, 2W, MOVING OPERATIONS - DAY ONLY
- 701901-08 TRAFFIC CONTROL DEVICES
- 781001-04 TYPICAL APPLICATIONS RAISED REFLECTIVE PAVEMENT MARKERS

# PROPOSED HIGHWAY PLANS

FAP ROUTE 681 (IL 116)  
SECTION (114)RS-5, (115)RS-4  
PROJECT STP-RUR <sup>QVLV (815)</sup>  
3P MILLING & RESURFACING  
(DESIGNED OVERLAY)  
LIVINGSTON COUNTY



FUNCTIONAL CLASSIFICATION  
MINOR ARTERIAL  
2017 ADT = 1500  
PV = 80% SU = 8% MU = 12%

STATE OF ILLINOIS  
DEPARTMENT OF TRANSPORTATION

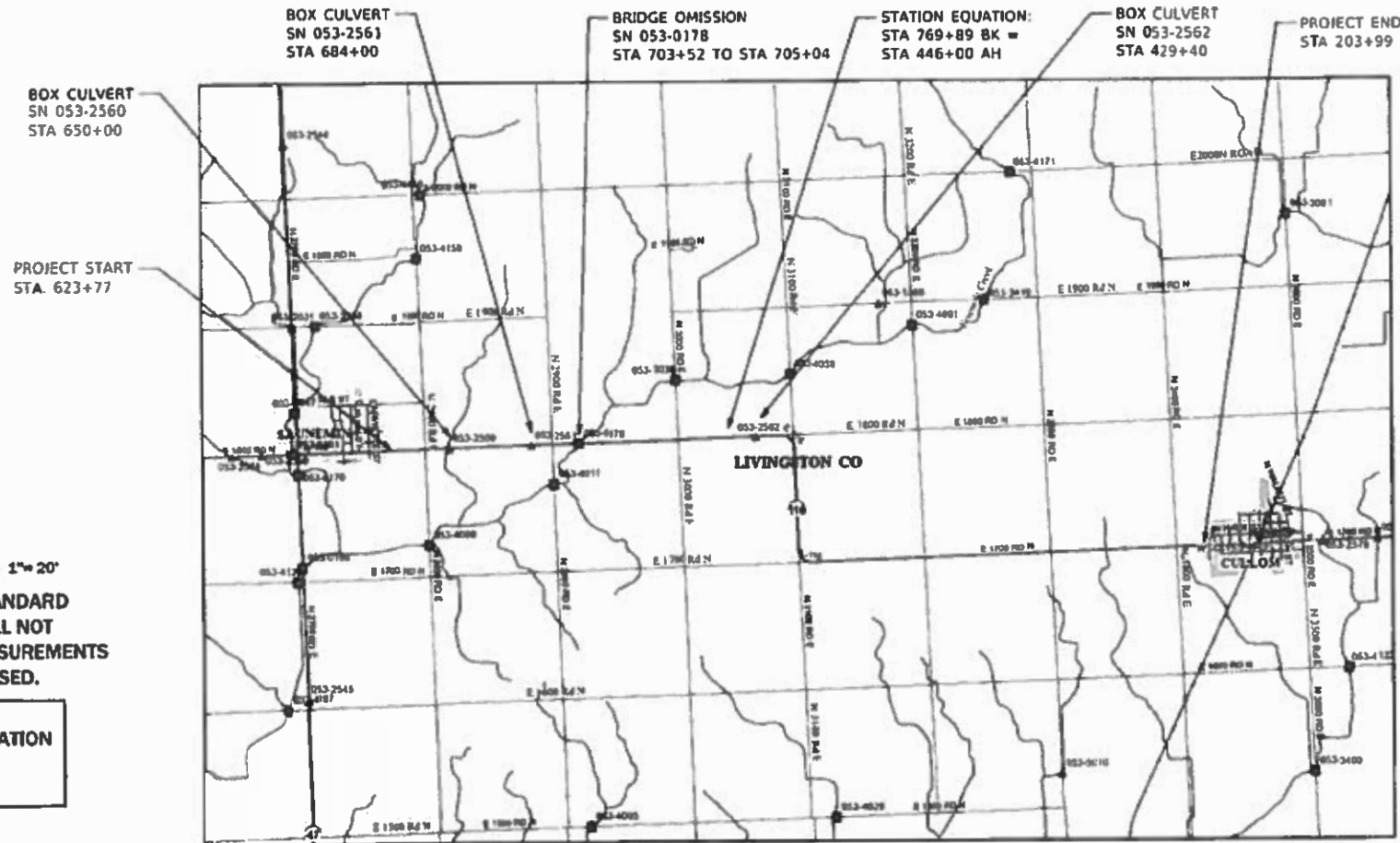
SUBMITTED 1-31-2020  
*Masood Ahmad, P.E.*  
REGIONAL ENGINEER

March 20, 2020  
*E.A. Elk*  
ENGINEER OF DESIGN AND ENVIRONMENT

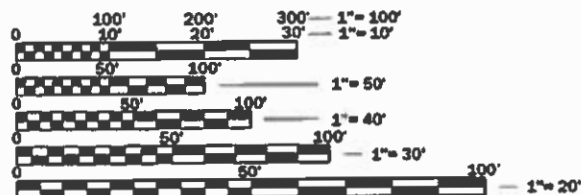
March 20, 2020  
*James J. G...*  
DIRECTOR OF HIGHWAY'S PROJECT IMPLEMENTATION

PRINTED BY THE AUTHORITY  
OF THE STATE OF ILLINOIS

C-93-044-11



GROSS LENGTH = 38411 FT. = 7.275 MILES  
NET LENGTH = 38259 FT. = 7.246 MILES



FULL SIZE PLANS HAVE BEEN PREPARED USING STANDARD ENGINEERING SCALES. REDUCED SIZED PLANS WILL NOT CONFORM TO STANDARD SCALES. IN MAKING MEASUREMENTS ON REDUCED PLANS, THE ABOVE SCALES MAY BE USED.

J.U.L.I.E.  
JOINT UTILITY LOCATION INFORMATION FOR EXCAVATION  
1-800-892-0123  
OR 811

PROJECT ENGINEER: JOE KANNEL, P.E.  
UNIT CHIEF: ARLENE OTERO-FEBUS  
DISTRICT 3 NO. (815) 434-6131  
CONTRACT NO. 66A87

**GENERAL NOTES**

THE THICKNESS OF HMA SHOWN ON THE PLANS IS THE NOMINAL THICKNESS. DEVIATIONS FROM THE NOMINAL THICKNESS WILL BE PERMITTED WHEN SUCH DEVIATIONS OCCUR DUE TO IRREGULARITIES IN THE EXISTING SURFACE OR BASE ON WHICH THE HMA IS PLACED.

THE ENGINEER WILL BE THE SOLE JUDGE CONCERNING CURING TIME FOR THE VARIOUS HMA LIFTS.

ON EXISTING PAVEMENT WHICH MAY BE SUPERELEVATED, THE NEW HMA PAVEMENT SHALL BE BUILT WITH THE SAME SUPERELEVATION UNLESS NEW SUPERELEVATION RATES ARE GIVEN ON THE PLANS.

ANY REFERENCE TO A STANDARD IN THESE PLANS SHALL BE INTERPRETED TO MEAN THE EDITION AS INDICATED BY THE SUBNUMBER SHOWN IN THE LIST OF STANDARDS OR THE COPY INCLUDED IN THESE PLANS.

THE FOLLOWING RATES OF APPLICATION HAVE BEEN USED IN CALCULATING PLAN QUANTITIES:

GRANULAR MATERIALS	2.05	TONS / CU YD
HMA RESURFACING	112	LBS / SQ YD / IN
SHORT TERM PAVEMENT MARKING	10	FT / 100 FT OF APPLICATION
MIX FOR CRACKS, JTS & FLGWYS	0.0003	TONS / SQ YD
BINDER (HAND METHOD)	0.0005	M TONS / SQ M

ALL DAMAGE TO DEPARTMENT OWNED UNDERGROUND FACILITIES, CAUSED BY THE CONTRACTOR SHALL BE REPAIRED TO THE SATISFACTION OF THE DEPARTMENT AT THE CONTRACTOR'S EXPENSE. THIS SHALL INCLUDE ALL TEMPORARY REPAIRS REQUIRED TO KEEP THE FACILITY OPERATIONAL WHILE MATERIAL IS BEING OBTAINED TO MAKE PERMANENT REPAIRS. SPLICING OF ELECTRIC CABLE WILL NOT BE ALLOWED. ELECTRIC CABLE SHALL BE REPLACED FROM POLE TO POLE OR CONTROLLER.

MEMBERS OF JULIE KNOWN TO BE WITHIN THE LIMITS OF THE IMPROVEMENT ARE: COMED, EASTERN ILLINI ELECTRIC, FRONTIER COMMUNICATIONS AND MEDIACOM.

**COMMITMENTS**

STATE OF ILLINOIS  
DEPARTMENT OF TRANSPORTATION  
DISTRICT THREE  
AS BUILT INFORMATION

\_\_\_\_\_  
SUPERVISING CONSTRUCTION FIELD ENGINEER

\_\_\_\_\_  
RESIDENT ENGINEER / TECHNICIAN

START & END DATES  
OF CONSTRUCTION:

INSPECTORS:

\_\_\_\_\_  
\_\_\_\_\_  
\_\_\_\_\_  
\_\_\_\_\_

STATE OF ILLINOIS  
DEPARTMENT OF TRANSPORTATION  
DISTRICT THREE

PREPARED BY: Tom Basini  
DISTRICT STUDIES & PLANS ENGINEER

DATE: 1-31-2020

EXAMINED BY: [Signature]  
DISTRICT CONSTRUCTION ENGINEER

[Signature]  
DISTRICT MATERIALS ENGINEER

[Signature]  
DISTRICT OPERATIONS ENGINEER

STATE OF ILLINOIS  
DEPARTMENT OF TRANSPORTATION

**GENERAL NOTES**

F.A.P. RTE	SECTION	COUNTY	TOTAL SHEETS	SHEET NO.
681	(114)RS-5, (115)RS-4	LIVINGSTON	25	2
CONTRACT NO. 66A87				
ILLINOIS FED. AID PROJECT				

FILE NAME *	USER NAME * DOYLEMT	DESIGNED -	REVISED -
p:\c\planroom\dsl\illinois.gov\PW007\Documents\DOT	Files\District 3 Projects\0366A87\CADD\0366A87-ahf-cover.dwg	RAWN -	REVISED -
Default	PLOT SCALE * 100.0000' / in.	CHECKED -	REVISED -
	PLOT DATE * 1/31/2020	DATE -	REVISED -

SCALE: SHEET OF SHEETS STA. TO STA.

MODEL: Default  
 FILE NAME: P:\uplanroom.dat\illinois.gov\PWIDOT\Documents\DOT\_Offices\District\_3\Project\66A87\CADDData\66A87-rt-500.dgn

CODE NO.	ITEM	UNIT	TOTAL QUANTITY	CONSTR. CODE	
				FUND TYPE	
				FEDERAL	
				ROADWAY	0005
				RURAL	
20400800	FURNISHED EXCAVATION	CU YD	15	15	
20800150	TRENCH BACKFILL	CU YD	26	26	
21400100	GRADING AND SHAPING DITCHES	FOOT	2150	2150	
X1200241	SINGLE CELL PRECAST TAPERED END SECTION 3X2, 1:4	EACH	2	2	
40600290	BITUMINOUS MATERIALS (TACK COAT)	POUND	79818	79818	
40600400	MIXTURE FOR CRACKS, JOINTS, AND FLANGWAYS	TON	34.8	34.8	
40600900	HOT-MIX ASPHALT BINDER COURSE (HAND METHOD), N50	TON	57.4	57.4	
40600990	TEMPORARY RAMP	SQ YD	626	626	
40602978	HOT-MIX ASPHALT BINDER COURSE, 1L- 9.5, N50	TON	12988	12988	
40604050	HOT-MIX ASPHALT SURFACE COURSE, 1L-9.5, MIX "C", N50	TON	11366	11366	
40800050	INCIDENTAL HOT-MIX ASPHALT SURFACING	TON	527	527	
44000164	HOT-MIX ASPHALT SURFACE REMOVAL, 3 3/4"	SQ YD	114664	114664	
44201019	CLASS B PATCHES, TYPE II, 14 INCH	SQ YD	51	51	
44201299	DOWEL BARS 1 1/2"	EACH	46	46	

80% FED  
20% STATE

USER NAME = NOLASCOCJ	DESIGNED -	REVISED -
	DRAWN -	REVISED -
PLOT SCALE = 100.0000 ' / in.	CHECKED -	REVISED -
PLOT DATE = 2/1/2020	DATE -	REVISED -

**STATE OF ILLINOIS  
DEPARTMENT OF TRANSPORTATION**

**SUMMARY OF QUANTITIES**

SCALE: SHEET OF SHEETS STA. TO STA.

F.A.P. RTE.	SECTION	COUNTY	TOTAL SHEETS	SHEET NO.
681	(114)RS-5, (115)RS-4	LIVINGSTON	25	3
			CONTRACT NO. 66A87	
ILLINOIS FED. AID PROJECT				

MODEL: Default  
 FILE NAME: p:\p\barcom.dat; illinois.gov; PWIDOT\Documents\DOT\_Offices\District\_3\Projects\0366A87\CADDData\0366A87-rtr-500.dgn

CODE NO.	ITEM	UNIT	TOTAL QUANTITY	CONSTR. CODE	
				80% FED 20% STATE	
				FUND TYPE FEDERAL	
				ROADWAY	0005
				RURAL	
44213200	SAW CUTS	FOOT	191	191	
48101200	AGGREGATE SHOULDERS, TYPE B	TON	2695	2695	
50105220	PIPE CULVERT REMOVAL	FOOT	94	94	
542A0220	PIPE CULVERTS, CLASS A, TYPE 1 15"	FOOT	26	26	
542A5476	PIPE CULVERTS, CLASS A, TYPE 1 EQUIVALENT ROUND-SIZE 21"	FOOT	138	138	
542A5491	PIPE CULVERTS, CLASS A, TYPE 1 EQUIVALENT ROUND-SIZE 36"	FOOT	14	14	
54260315	TRAVERSABLE PIPE GRATE FOR CONCRETE END SECTION	FOOT	18	18	
54261218	CONCRETE END SECTION, STANDARD 542001, 18", 1:2	EACH	2	2	
54262715	METAL FLARED END SECTIONS 15"	EACH	2	2	
54263321	CONCRETE END SECTION, STANDARD 542011, 21", 1:3	EACH	4	4	
54263421	CONCRETE END SECTION, STANDARD 542011, 21", 1:4	EACH	4	4	
54390180	INSERTION CULVERT LINER 24"	FOOT	96	96	
54263436	CONCRETE END SECTION, STANDARD 542011, 36", 1:4	EACH	2	2	
64200108	SHOULDER RUMBLE STRIPS, 8 INCH	FOOT	5662	5662	
* 66700205	PERMANENT SURVEY MARKERS, TYPE I	EACH	14	14	
67100100	MOBILIZATION	L SUM	1	1	

\*= SPECIALTY ITEM

USER NAME = NOLASCOCJ	DESIGNED -	REVISED -
	DRAWN -	REVISED -
PLOT SCALE = 100.0000' / in.	CHECKED -	REVISED -
PLOT DATE = 2/1/2020	DATE -	REVISED -

**STATE OF ILLINOIS  
 DEPARTMENT OF TRANSPORTATION**

**SUMMARY OF QUANTITIES**

SCALE: SHEET OF SHEETS STA. TO STA.

F.A.P. RTE.	SECTION	COUNTY	TOTAL SHEETS	SHEET NO.
681	(114)RS-5, (115)RS-4	LIVINGSTON	25	4
			CONTRACT NO. 66A87	
ILLINOIS FED. AID PROJECT				

CODE NO.	ITEM	UNIT	TOTAL QUANTITY	CONSTR. CODE	
				FUND TYPE FEDERAL	
				ROADWAY	0005 RURAL
				80% FED 20% STATE	
70100460	TRAFFIC CONTROL AND PROTECTION, STANDARD 701306	L SUM	1		1
70300100	SHORT TERM PAVEMENT MARKING	FOOT	6954		6954
70300150	SHORT TERM PAVEMENT MARKING REMOVAL	SQ FT	2316		2316
* 78001110	PAINT PAVEMENT MARKING - LINE 4"	FOOT	198286		198286
* 78001130	PAINT PAVEMENT MARKING - LINE 6"	FOOT	17558		17558
* 78001150	PAINT PAVEMENT MARKING - LINE 12"	FOOT	204		204
* 78004374	PREFORMED PLASTIC PAVEMENT MARKING, TYPE D - INLAID - LINE 24"	FOOT	25		25
* 78100100	RAISED REFLECTIVE PAVEMENT MARKER	EACH	484		484
78300200	RAISED REFLECTIVE PAVEMENT MARKER REMOVAL	EACH	484		484
X0322936	REMOVE EXISTING FLARED END SECTION	EACH	4		4
X0326898	CENTER LINE - RUMBLE STRIP - 16"	FOOT	6542		6542
X1200050	BOX CULVERT REMOVAL	FOOT	42		42
X4401198	HOT-MIX ASPHALT SURFACE REMOVAL, VARIABLE DEPTH	SQ YD	3418		3418
X5010520	REMOVE CONCRETE BOX CULVERT END SECTION	EACH	4		4

\*= SPECIALTY ITEM

MODEL: Default  
FILE: \\nolascoc\pub\lham\room\data\illinois\pwr\WIDOT\Documents\DOT\_Offices\District\_3\Projects\ID366A87\CADDData\ID366A87-2ht-500.dgn

USER NAME = NOLASCOCJ	DESIGNED -	REVISED -	<b>STATE OF ILLINOIS DEPARTMENT OF TRANSPORTATION</b>	<b>SUMMARY OF QUANTITIES</b>				F.A.P. RTE.	SECTION	COUNTY	TOTAL SHEETS	SHEET NO.
PLOT SCALE = 100.0000' / in.	DRAWN -	REVISED -						681	(114)RS-5, (115)RS-4	LIVINGSTON	25	5
PLOT DATE = 2/1/2020	CHECKED -	REVISED -		SCALE: SHEET OF SHEETS STA. TO STA.				CONTRACT NO. 66A87				
	DATE -	REVISED -		ILLINOIS FED. AID PROJECT								

MODEL: Default  
 FILE: \\nls-px1\pub\room\data\illinois.gov\PWIDOT\Documents\DOT\_Offices\District\_3\Projects\1366A87\CADD\data\1366A87-sh-500.dgn

CODE NO.	ITEM	UNIT	TOTAL QUANTITY	CONSTR. CODE	
				FUND TYPE	FEDERAL
				ROADWAY	
				0005	
				RURAL	
					80% FED 20% STATE
X5420618	PIPE CULVERTS TO BE CLEANED 18"	FOOT	100	100	
* X7830090	GROOVING FOR RECESSED PAVEMENT MARKING 25"	FOOT	25	25	
Z0005300	BOX CULVERTS TO BE CLEANED	EACH	5	5	
Z0030850	TEMPORARY INFORMATION SIGNING	SQ FT	42	42	
∅ Z0076600	TRAINEES	HOUR	1000	1000	
Z0033700	LONGITUDINAL JOINT SEALANT	FOOT	38259	38259	
∅ Z0076604	TRAINEES - TRAINING PROGRAM GRADUATE	HOUR	1000	1000	
Z0034105	MATERIAL TRANSFER DEVICE	TON	24354	24354	

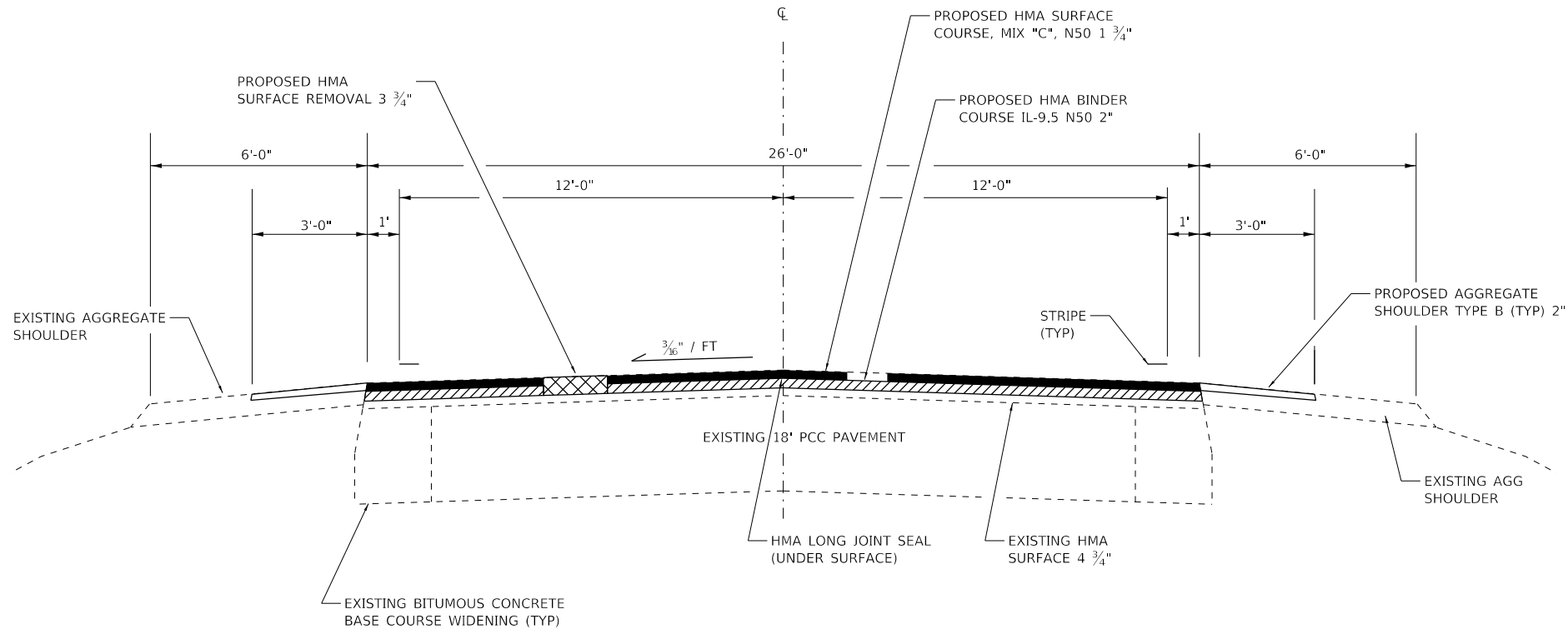
\*= SPECIALTY ITEM  
 ∅ 0042

USER NAME = NOLASCOCJ	DESIGNED -	REVISED -
	DRAWN -	REVISED -
PLOT SCALE = 100.0000' / in.	CHECKED -	REVISED -
PLOT DATE = 2/1/2020	DATE -	REVISED -

**STATE OF ILLINOIS  
 DEPARTMENT OF TRANSPORTATION**

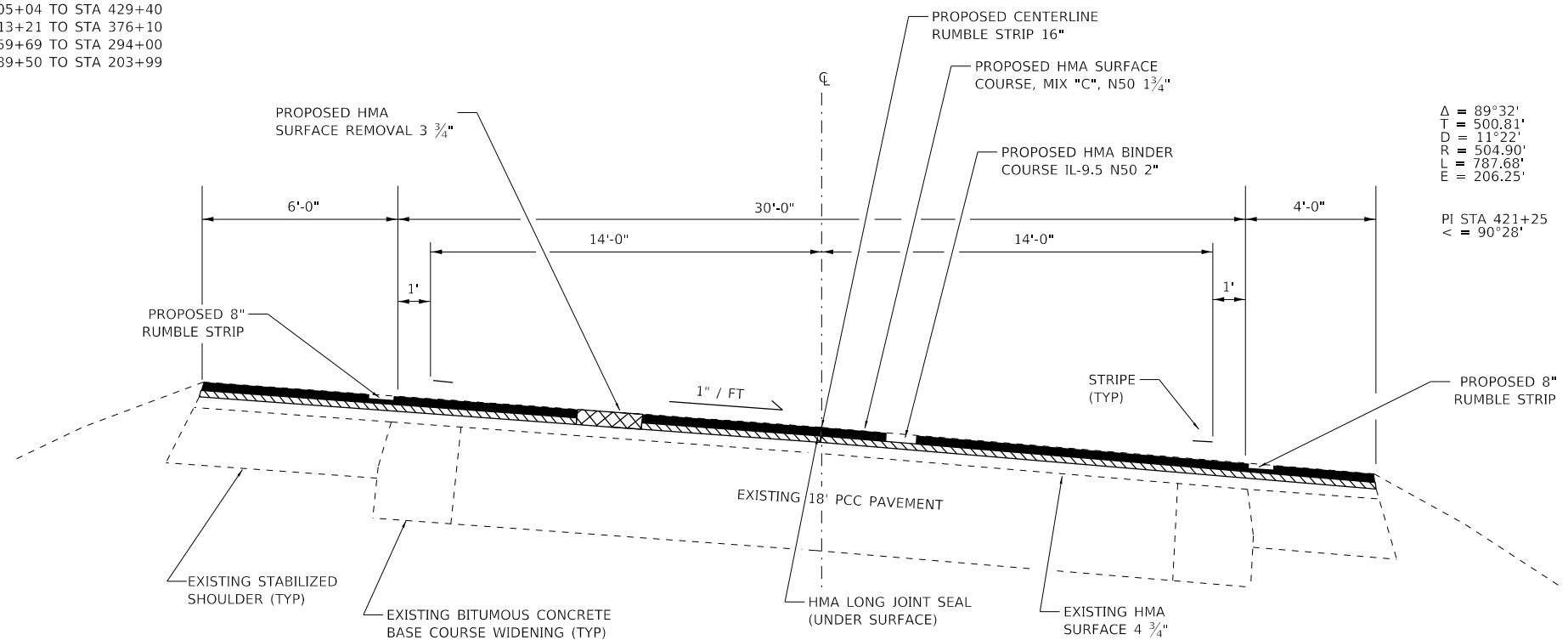
SUMMARY OF QUANTITIES			
SCALE:	SHEET	OF SHEETS	STA. TO STA.

F.A.P. RTE.	SECTION	COUNTY	TOTAL SHEETS	SHEET NO.
681	(114)RS-5, (115)RS-4	LIVINGSTON	25	6
CONTRACT NO. 66A87				
ILLINOIS FED. AID PROJECT				



**TYPICAL SECTION 1**

STA 623+77 TO STA 703+52  
 STA 705+04 TO STA 429+40  
 STA 413+21 TO STA 376+10  
 STA 359+69 TO STA 294+00  
 STA 289+50 TO STA 203+99



Δ = 89°32'  
 T = 500.81'  
 D = 11°22'  
 R = 504.90'  
 L = 787.68'  
 E = 206.25'

PI STA 421+25  
 < = 90°28'

**TYPICAL SECTION 2**

STA 429+40 TO STA 413+21

MODEL: Default  
 FILE: \\nrcs-pub\pubroom\dat\illinois.gov\PI\DOT\Documents\DOT\_Offices\District\_3\Projects\11366A87\_CADD\11366A87-2b-civil.dgn

USER NAME = DOYLEMT	DESIGNED -	REVISED -
	DRAWN -	REVISED -
PLOT SCALE = 100.0000' / in.	CHECKED -	REVISED -
PLOT DATE = 1/31/2020	DATE -	REVISED -

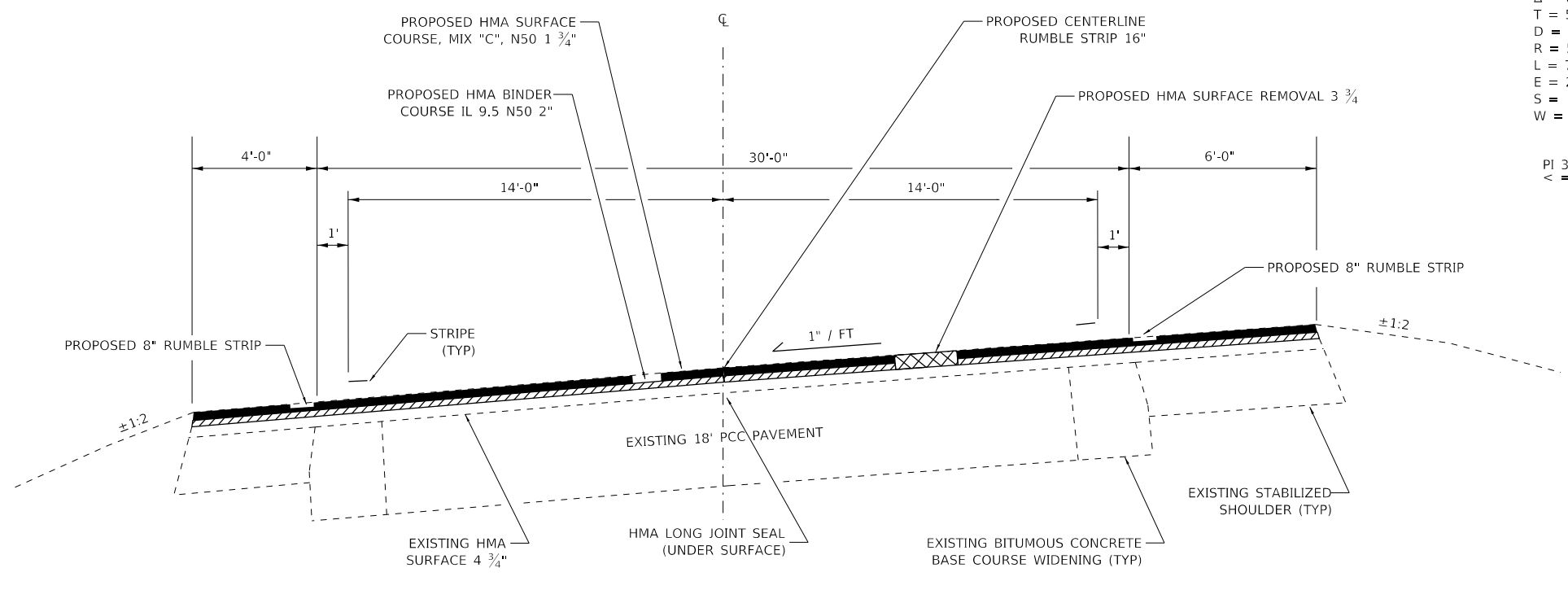
**STATE OF ILLINOIS  
 DEPARTMENT OF TRANSPORTATION**

<b>TYPICAL SECTIONS</b>			
SCALE:	SHEET 1	OF 2 SHEETS	STA. TO STA.

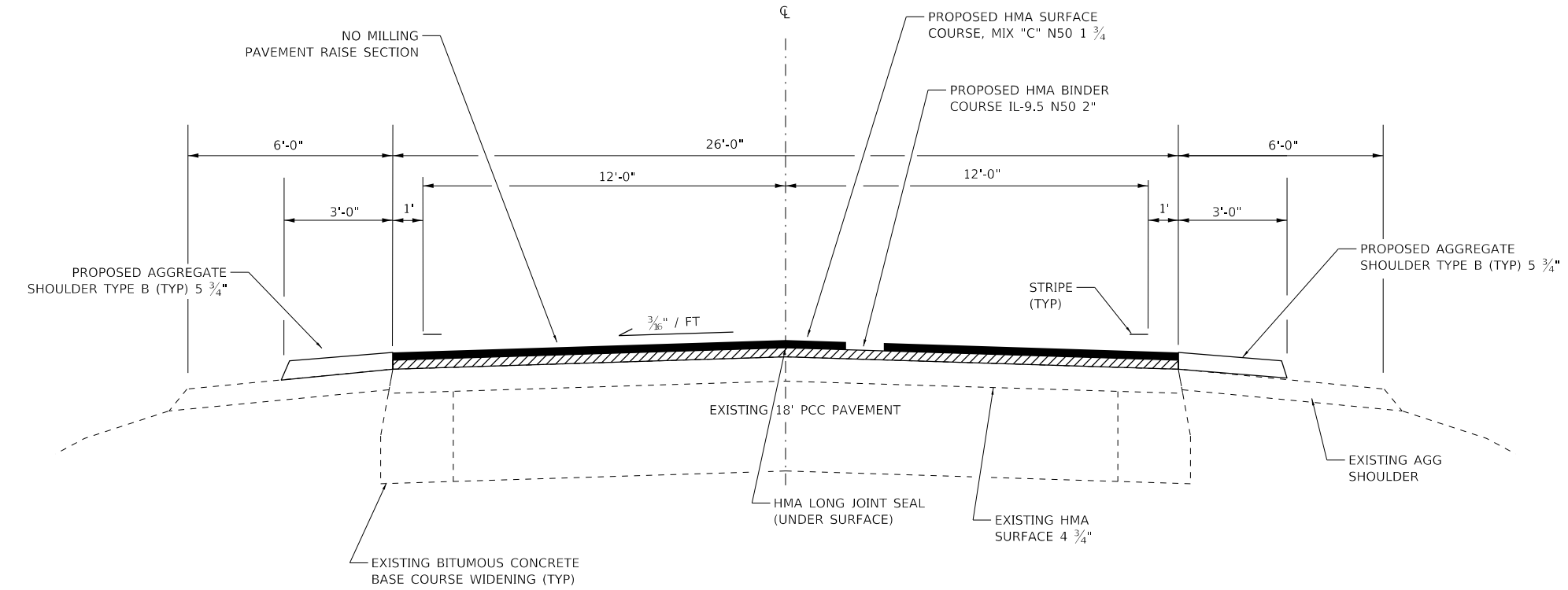
F.A.P. RTE.	SECTION	COUNTY	TOTAL SHEETS	SHEET NO.
681	(114)RS-5, (115)RS-4	LIVINGSTON	25	7
CONTRACT NO. 66A87				
ILLINOIS FED. AID PROJECT				

$\Delta = 89^{\circ}45'$   
 $T = 501.24'$   
 $D = 11^{\circ}24'$   
 $R = 503.42'$   
 $L = 787.28'$   
 $E = 206.97'$   
 $S = 1" \text{ PER FT}$   
 $W = 2.5'$

PI 386+07  
 $< = 269^{\circ}45'$



**TYPICAL SECTION 3**  
 STA 376+10 TO STA 359+69



**TYPICAL SECTION 4**  
 STA 294+00 TO STA 289+50  
 (SEE TAPER DETAIL)

MODEL: Default  
 FILE: h:\m\c\p\suplanroom.d\at\links\gov\p\w\DOT\Documents\DOT\_Offices\District 3\Projects\ID366A87\CADD\data\ID366A87-sh-typical.dgn

USER NAME = DOYLEMT	DESIGNED -	REVISED -
	DRAWN -	REVISED -
PLOT SCALE = 100.0000' / in.	CHECKED -	REVISED -
PLOT DATE = 1/31/2020	DATE -	REVISED -

**STATE OF ILLINOIS**  
**DEPARTMENT OF TRANSPORTATION**

<b>TYPICAL SECTIONS</b>			
SCALE:	SHEET 2	OF 2 SHEETS	STA. TO STA.

F.A.P. RTE.	SECTION	COUNTY	TOTAL SHEETS	SHEET NO.
681	(114)RS-5, (115)RS-4	LIVINGSTON	25	8
CONTRACT NO. 66A87				
ILLINOIS FED. AID PROJECT				



PERMANENT SURVEY MARKERS					
MONUMENT NUMBER	DESCRIPTION	EXISTING	PROPOSED	MONUMENT	RESPONSIBILITY
		MONUMENT TYPE	MONUMENT TYPE	RECORD TO BE RECORDED	
116669	SE CORNER SECTION 22, T28N, R8E, 3RD PM	PK NAIL	TYPE 1	YES	1
116670	S QTR CORNER SECTION 22, T28N, R8E, 3RD PM	COMPUTED	TYPE 1	NO	1
116671	NW CORNER SECTION 27, T28N, R8E, 3RD PM	BRASS PLUG	TYPE 1	YES	1
116672	S QTR CORNER SECTION 21, T28N, R8E, 3RD PM	COMPUTED	TYPE 1	NO	1
116673	SW CORNER SECTION 21, T28N, R8E, 3RD PM	COMPUTED	TYPE 1	NO	1
116674	S QTR CORNER SECTION 20, T28N, R8E, 3RD PM	COMPUTED	TYPE 1	NO	1
116676	W QTR CORNER SECTION 20, T28N, R8E, 3RD PM	PK NAIL/COMPUTED	TYPE 1	NO	1
116678	N QTR CORNER SECTION 19, T28N, R8E, 3RD PM	PK NAIL/COMPUTED	TYPE 1	NO	1
116679	NW CORNER SECTION 19, T28N, R8E, 3RD PM	COMPUTED	TYPE 1	NO	1
116680	NE CORNER SECTION 24, T28N, R7E, 3RD PM	MISSING	TYPE 1	YES	1
116682	S QTR CORNER SECTION 13, T28N, R7E, 3RD PM	PK NAIL	TYPE 1	YES	1
116683	SW CORNER SECTION 13, T28N, R7E, 3RD PM	BRASS PLUG	TYPE 1	YES	1
116684	S QTR CORNER SECTION 14, T28N, R7E, 3RD PM	NAIL & BC/COMPUTED	TYPE 1	NO	1
116685	NW CORNER SECTION 23, T28N, R7E, 3RD PM	BRASS PLUG	TYPE 1	YES	1

UNKNOWN MONUMENTS SET BY OTHERS MAY EXIST. IF FOUND, R.E. WILL DIRECT PLATS AND PLANS TO OBTAIN COORDINATES ON ANY FOUND MONUMENT(S) SUBJECT TO DESTRUCTION FROM THE RESURFACING WORK.  
R.E. WILL DIRECT PLATS AND PLANS TO SEARCH FOR ADDITIONAL MONUMENTS IF THE JOB LIMITS ARE EXPANDED DURING CONSTRUCTION.  
UPON PAVING COMPLETION, R.E. WILL DIRECT PLATS AND PLANS TO STAKE THE LOCATIONS FOR TYPE 1 MONUMENT CORING.  
NOTE: EXISTING MONUMENT TYPES DESIGNATED AS "COMPUTED" ARE SECTION CORNERS OR QUARTER CORNERS OF RECENTLY COMPLETED SURVEYS. MONUMENT RECORDS WILL BE FILED FOR THESE CORNERS BY KRAUSE SURVEYING PRIOR TO THE RESURFACING. THOSE MONUMENT RECORDS WILL NOTE THAT BRASS PERMANENT SURVEY MARKERS WILL BE SET DURING THE RESURFACING. UPDATED MONUMENT RECORDS WILL NOT BE REQUIRED FOR THOSE CORNERS.  
PLATS AND PLANS WILL PREPARE AND RECORD THE REQUIRED MONUMENT RECORDS FOR THE OTHER CORNERS.  
NOTE: FOR BIDDING PURPOSES, NO CONTRACTED LAND SURVEYING SERVICES WILL BE REQUIRED FOR SETTING THE LISTED PERMANENT SURVEY MARKERS.

RESPONSIBILITY:  
1) RESIDENT TO RE-ESTABLISH MONUMENT (PAY ITEM REQUIRED. PERMANENT SURVEY MARKER, TYPE 1)  
2) PLATS AND PLANS TO RE-ESTABLISH MONUMENT

MODEL: Default  
FILE: \\nrcs-pub\pubroom\data\illinois.gov\PWIDOT\Documents\DOT\_Offices\District\_3\Projects\1136687-2\LINE DUGRAM & PSM\_TABLE.dgn

USER NAME = DOYLEMT	DESIGNED -	REVISED -
	DRAWN -	REVISED -
PLOT SCALE = 100.0000' / in.	CHECKED -	REVISED -
PLOT DATE = 1/31/2020	DATE -	REVISED -

**STATE OF ILLINOIS  
DEPARTMENT OF TRANSPORTATION**

**PERMANENT SURVEY MARKER TABLE**

SCALE: SHEET 1 OF 1 SHEETS STA. TO STA.

F.A.P. RTE.	SECTION	COUNTY	TOTAL SHEETS	SHEET NO.
681	(114)RS-5, (115)RS-4	LIVINGSTON	25	9
CONTRACT NO. 66A87				
ILLINOIS		FED. AID PROJECT		



**MAINLINE SCHEDULE**

LOCATION	LENGTH	WIDTH	RESURF AREA	HMA SURF REM 3-3/4"	HMA SURF CSE IL 9.5 MIX C, N50	HMA BINDER CSE IL 9.5 N50	MATL TRANS DEVICE	LONG JOINT SEAL	BIT MATL (TACK COAT)	MIX FOR CRACKS, JOINTS & FLGWYS	BINDER (HM) N50	TEMP RAMP	AGG SHLD TYPE B	SHLDR RUMBLE STRIP 8"	CENTERLINE RUMBLE STRIP 16"
STA 623+50 TO STA 698+40	7490	26	194740	21638	2121	2423	4544	7490	14606	6.5	10.8	36	569		
STA 698+40 TO STA 703+52	512	35	17920	1991	195	223	418	512	1344	0.6	1.0	36			
STA 703+52 TO STA 705+04	BRIDGE OMISSION														
STA 705+04 TO STA 710+25	521	35	18235	2026	199	227	426	521	1368	0.6	1.0	36			
STA 710+25 TO STA 769+89 BK	5964	26	155064	17229	1688	1930	3618	5964	11630	5.2	8.6		453		
STA 446+00 AH TO STA 429+40	1660	26	43160	4796	470	537	1007	1660	3237	1.4	2.4		126		
STA 429+40 TO STA 426+26 ON TAN	314	40	12560	1396	137	156	293	314	942	0.4	0.7			628	
STA 424+12 ON CURVE TO STA 413+21	1091	40	43640	4849	475	543	1018	1091	3273	1.5	2.4			2182	
STA 413+21 TO STA 376+10	3711	26	96486	10721	1051	1201	2252	3711	7236	3.2	5.4		283		
STA 376+10 TO STA 373+08 ON TAN	302	40	12080	1342	132	150	282	302	906	0.4	0.7			604	
STA 370+93 ON CURVE TO STA 359+69	1124	40	44960	4996	490	560	1050	1124	3372	1.5	2.5			2248	
STA 359+69 TO STA 294+00	6569	26	170794	18977	1860	2125	3985	6569	12810	5.7	9.5	36	501		
STA 294+00 TO STA 289+50	450	26	11700		127	146	273	450	878	0.4	0.0	36	98		
STA 289+50 TO STA 203+99	8551	26	222326	24703	2421	2767	5188	8551	16674	7.4	12.4	36	651		
<b>TOTALS</b>			<b>1043665</b>	<b>114664</b>	<b>11366</b>	<b>12988</b>	<b>24354</b>	<b>38259</b>	<b>78276</b>	<b>34.8</b>	<b>57.4</b>	<b>216</b>	<b>2681</b>	<b>5662</b>	<b>6542</b>

**SIDEROAD SCHEDULE**

LOCATION	LENGTH	WIDTH	RESURF AREA	HMA SURF REMOVAL VARIABLE DEPTH	BITUMINOUS MATERIAL (TACK COAT)	TEMP RAMP	INCIDENTAL HMA SURFACING
N 2800 E							
STA 640+63 LT	30	42	1260	140	63	23	22
STA 640+63 RT	30	39	1170	130	59	22	20
N 2900 E							
STA 693+70 LT	30	37	1110	123	56	21	19
STA 693+70 RT	30	43	1290	143	65	24	22
N 3000 E							
STA 746+39 LT	30	48	1440	160	72	27	25
STA 746+39 RT	30	38	1140	127	57	21	20
E 1800 E							
STA 424+82 LT	45	53	2385	265	119	29	41
N 3100 E							
STA 417+73 LT	40	43	1720	191	86	24	29
STA 369+45 RT	35	45	1575	175	79	25	27
E 1700 N							
STA 364+29 RT	45	50	2250	250	113	28	39
N 3200 E							
STA 315+28 LT	30	40	1200	133	60	22	21
STA 315+28 RT	30	30	900	100	45	17	15
N 3300 E							
STA 262+47 LT	30	52	1560	173	78	29	27
STA 262+47 RT	30	78	2340	260	117	43	40
N 3400 E							
STA 209+75 LT	30	51	1530	170	77	28	26
STA 209+48 RT	30	48	1440	160	72	27	25
<b>TOTAL</b>				<b>2700</b>	<b>1218</b>	<b>410</b>	<b>418</b>

MODEL: Default  
FILE: h:\mhc\p\pub\haronom.dwg  
PROJECT: D:\366A87\CD\DATA\366A87-CH-SCHEM.DWG

USER NAME = NOLASCOCJ	DESIGNED -	REVISED -
	DRAWN -	REVISED -
PLOT SCALE = 100.0000 ' / in.	CHECKED -	REVISED -
PLOT DATE = 2/1/2020	DATE -	REVISED -

**STATE OF ILLINOIS  
DEPARTMENT OF TRANSPORTATION**

**SCHEDULE OF QUANTITIES**

SCALE: SHEET OF SHEETS STA. TO STA.

F.A.P. RTE.	SECTION	COUNTY	TOTAL SHEETS	SHEET NO.
681	(114)RS-5, (115)RS-4	LIVINGSTON	25	11
CONTRACT NO. 66A87				
ILLINOIS FED. AID PROJECT				

MODEL: Default  
 FILE: Model: P:\pub\lanroom.dwg  
 PROJECT: I:\Projects\DOT\Documents\DOT - Offices\Dir\ctc\_3\Project\0366A87\_CADD\0366A87-ctc-sched.xls.dgn

ENTRANCE SCHEDULE									
LOCATION	TYPE	MATERIAL	WIDTH	AREA	HMA SURF REMOVAL VARIABLE DEPTH	BITUMINOUS MATERIAL (TACK COAT)	INCIDENTAL HMA SURFACE	AGG SHLD TYPE B	
			FT	SQ FT	SQ YD	POUND	TON	TON	
STA 628+21	RT	FE	AGG	25	75				1
STA 643+41	LT	FE	AGG	25	75				1
STA 643+45	RT	PE	HMA	25	250	28	13	4	
STA 650+71	RT	FE	AGG	20	60				1
STA 667+07	LT	FE	AGG	18	54				1
STA 672+82	RT	PE	HMA	26	260	29	13	4	
STA 673+07	LT	MBTO	HMA	55	368	41	18	6	
STA 673+82	LT	PE	HMA	38	380	42	19	7	
STA 680+52	LT	PE	HMA	21	210	23	11	4	
STA 702+11	LT	FE	AGG	23	69				1
STA 710+91	RT	PE	HMA	28	280	31	14	5	
STA 712+61	LT	FE	AGG	10	30				
STA 712+61	RT	PE	HMA	20	200	22	10	3	
STA 717+48	LT	FE	AGG	18	54				1
STA 723+13	LT	FE	AGG	13	39				
STA 725+63	RT	PE	HMA	30	300	33	15	5	
STA 725+63	RT	MBTO	HMA	29	275	31	14	5	
STA 749+24	LT	PE	HMA	31	310	34	16	5	
STA 766+14	RT	FE	AGG	16	48				1
STA 768+39	LT	FE	AGG	13	39				
STA 417+35	LT	PE	HMA	30	300	33	15	5	
STA 412+35	RT	FE	AGG	15	45				1
STA 396+50	LT	FE	AGG	10	30				
STA 360+84	LT	FE	AGG	17	51				1
STA 341+78	RT	FE	AGG	14	42				1
STA 339+38	LT	PE	HMA	29	290	32	15	5	
STA 339+38	RT	MBTO	HMA	43	368	41	18	6	
STA 329+03	RT	FE	AGG	13	39				
STA 321+93	RT	FE	AGG	13	39				
STA 313+12	LT	PE	HMA	30	300	33	15	5	
STA 313+02	RT	MBTO	HMA	40	368	41	18	6	
STA 308+87	RT	PE	HMA	25	250	28	13	4	
STA 301+74	RT	FE	AGG	10	30				
STA 288+77	RT	FE	AGG	15	45				1
STA 264+37	LT	PE	HMA	24	240	27	12	4	
STA 254+65	LT	FE	AGG	16	48				1
STA 252+65	RT	FE	AGG	15	45				1
STA 243+05	RT	FE	AGG	12	36				
STA 236+35	RT	PE	HMA	34	340	38	17	6	
STA 236+25	LT	FE	AGG	14	42				1
STA 236+05	RT	MBTO	HMA	34	287	32	14	5	
STA 224+15	LT	PE	HMA	52	520	58	26	9	
STA 224+15	RT	MBTO	HMA	49	368	41	18	6	
STA 222+88	RT	FE	AGG	10	30				
STA 216+05	RT	FE	AGG	10	30				
TOTAL					7559	718	324	109	14

USER NAME = NOLASCOCJ	DESIGNED -	REVISED -
	DRAWN -	REVISED -
PLOT SCALE = 100.0000' / in.	CHECKED -	REVISED -
PLOT DATE = 2/1/2020	DATE -	REVISED -

**STATE OF ILLINOIS  
 DEPARTMENT OF TRANSPORTATION**

SCHEDULE OF QUANTITIES			
SCALE:	SHEET	OF	SHEETS

F.A.P. RTE.	SECTION	COUNTY	TOTAL SHEETS	SHEET NO.
681	(114)RS-5, (115)RS-4	LIVINGSTON	25	12
CONTRACT NO. 66A87				
ILLINOIS		FED. AID PROJECT		

SHORT TERM PAVEMENT MARKINGS						
LOCATION		LENGTH	SHORT TERM PVMT MARK	SHORT TERM PVMT MARK REM		
STATION		FOOT	FOOT	SQ FT		
STA 623+50	TO STA 662+02	3852	693	231		
STA 662+02	TO STA 672+82	1080	194	65		
STA 672+82	TO STA 681+32	850	153	51		
STA 681+32	TO STA 703+52	2220	400	133		
STA 703+52	TO STA 705+04	152	27	9		
STA 705+04	TO STA 732+09	2705	487	162		
STA 732+09	TO STA 741+24	915	165	55		
STA 741+24	TO STA 742+09	85	15	5		
STA 742+09	TO STA 749+79	770	139	46		
STA 749+79	TO STA 760+74	1095	197	66		
STA 760+74	TO STA 769+58 BK	884	159	53		
STA 446+00 AH	TO STA 445+33	67	12	4		
STA 445+33	TO STA 438+28	705	127	42		
STA 438+28	TO STA 435+91	237	43	14		
STA 435+91	TO STA 427+31	860	155	52		
STA 427+31	TO STA 426+26 ON TAN	105	19	6		
STA 424+12 ON CURVE	TO STA 423+13	99	18	6		
STA 423+13	TO STA 422+45	68	10	3		
STA 422+45	TO STA 418+08	437	86	29		
STA 418+08	TO STA 417+42	66	10	3		
STA 417+42	TO STA 412+92	450	81	27		
STA 412+92	TO STA 405+37	755	136	45		
STA 405+37	TO STA 379+17	2620	472	157		
STA 379+17	TO STA 373+92	525	95	32		
STA 373+92	TO STA 373+08 ON TAN	299	54	18		
STA 370+93 ON CURVE	TO STA 370+57	36	5	2		
STA 370+57	TO STA 366+02	455	88	29		
STA 366+02	TO STA 365+37	65	9	3		
STA 365+37	TO STA 351+27	1410	254	85		
STA 351+27	TO STA 341+07	1020	184	61		
STA 341+07	TO STA 333+92	715	129	43		
STA 333+92	TO STA 329+87	405	73	24		
STA 329+87	TO STA 322+62	725	131	44		
STA 322+62	TO STA 289+82	3280	590	197		
STA 289+82	TO STA 283+32	650	117	39		
STA 283+32	TO STA 279+27	405	73	24		
STA 279+27	TO STA 273+44	583	105	35		
STA 273+44	TO STA 259+59	1385	249	83		
STA 259+59	TO STA 253+69	590	106	35		
STA 253+69	TO STA 249+39	430	77	26		
STA 249+39	TO STA 242+89	650	117	39		
STA 242+89	TO STA 226+19	1670	301	100		
STA 226+19	TO STA 217+39	880	158	53		
STA 217+39	TO STA 203+99	1340	241	80		
TOTALS		38595	6954	2316		

PAVEMENT MARKINGS														
LOCATION		LENGTH	PAINT - 2 APPLICATIONS				PREFORMED PLASTIC PM TYPE D-INLAID LINE 24"	GROOVING FOR RECESSED PM 25"	RAISED REF PVMT MARKER	RAISED REF PVMT MARK REM				
			4" LINE		6"	12"					FOOT	FOOT	EACH	EACH
			WHITE	YELLOW	YELLOW	WHITE								
STATION		FOOT	FOOT	FOOT	FOOT	FOOT	FOOT	FOOT	EACH	EACH				
STA 623+50	TO STA 662+02	3852	15408			1926			48	48				
STA 662+02	TO STA 672+82	1080	4320	2160		540			14	14				
STA 672+82	TO STA 681+32	850	3400	1700		426			11	11				
STA 681+32	TO STA 703+52	2220	8880			1110			28	28				
STA 703+52	TO STA 705+04	152	608			76			2	2				
STA 705+04	TO STA 732+09	2705	10820			1352			34	34				
STA 732+09	TO STA 741+24	915	3660	1830		458			11	11				
STA 741+24	TO STA 742+09	85	340			42			1	1				
STA 742+09	TO STA 749+79	770	3080	1540		386			10	10				
STA 749+79	TO STA 760+74	1095	4380			548			14	14				
STA 760+74	TO STA 769+58 BK	884	3536	1768		442			11	11				
STA 446+00 AH	TO STA 445+33	67	268			34			1	1				
STA 445+33	TO STA 438+28	705	2820	1410		352			9	9				
STA 438+28	TO STA 435+91	237	948			118			3	3				
STA 435+91	TO STA 427+31	860	3440	1720		430			11	11				
STA 427+31	TO STA 426+26 ON TAN	105	420	420					1	1				
STA 424+12 ON CURVE	TO STA 423+13	99	396	396					1	1				
STA 423+13	TO STA 422+45	68	156	272					1	1				
STA 422+45	TO STA 418+08	437	2118	1748					5	5				
STA 418+08	TO STA 417+42	66	150	264					1	1				
STA 417+42	TO STA 412+92	450	1800	1800					6	6				
STA 412+92	TO STA 405+37	755	3020	1510		378			9	9				
STA 405+37	TO STA 379+17	2620	10480			1310			33	33				
STA 379+17	TO STA 373+92	525	2100	1050		262			7	7				
STA 373+92	TO STA 373+08 ON TAN	299	1196	1196					4	4				
STA 370+93 ON CURVE	TO STA 370+57	36	82	144										
STA 370+57	TO STA 366+02	455	2146	1820					6	6				
STA 366+02	TO STA 365+37	65	148	260					1	1				
STA 365+37	TO STA 351+27	1410	5640	5640					18	18				
STA 351+27	TO STA 341+07	1020	4080	2040		510			13	13				
STA 341+07	TO STA 333+92	715	2860	1430		358			9	9				
STA 333+92	TO STA 329+87	405	1620			202			5	5				
STA 329+87	TO STA 322+62	725	2900	1450		362			9	9				
STA 322+62	TO STA 289+82	3280	13120			1640			41	41				
STA 289+82	TO STA 283+32	650	2600	1300		326			8	8				
STA 283+32	TO STA 279+27	405	1620			202			5	5				
STA 279+27	TO STA 273+44	583	2332	1166		292			7	7				
STA 273+44	TO STA 259+59	1385	5540			692	25	25	17	17				
STA 259+59	TO STA 253+69	590	2360	1180		296			7	7				
STA 253+69	TO STA 249+39	430	1720			216			5	5				
STA 249+39	TO STA 242+89	650	2600	1300		326			8	8				
STA 242+89	TO STA 226+19	1670	6680	3340		836			21	21				
STA 226+19	TO STA 217+39	880	3520	1760		440			11	11				
STA 217+39	TO STA 203+99	1340	5360			670			17	17				
TOTALS		38595	198286	17558	204	25	25	484	484					

MODEL: Default  
 FILE: \\p:\pub\lanscom\dat\illinois\gov\PIWDOT\Documents\DOT\_Offices\Illinet\3\Project\ID366A87-2\ch-sched\table.dgn

USER NAME = DOYLEMT	DESIGNED -	REVISED -
	DRAWN -	REVISED -
PLOT SCALE = 100,0000' / in.	CHECKED -	REVISED -
PLOT DATE = 1/31/2020	DATE -	REVISED -

**STATE OF ILLINOIS**  
**DEPARTMENT OF TRANSPORTATION**

**SCHEDULE OF QUANTITIES**

SCALE: SHEET OF SHEETS STA. TO STA.

F.A.P. RTE.	SECTION	COUNTY	TOTAL SHEETS	SHEET NO.
681	(114)RS-5, (115)RS-4	LIVINGSTON	25	13
CONTRACT NO. 66A87				
ILLINOIS FED. AID PROJECT				

PIPE CULVERT REPLACEMENT SCHEDULE														
LOCATION	SIDE	END SECTIONS EXISTING	CULVERT LENGTH	PIPE CULVERT REMOVAL	PIPE CULVERT CL A TYP 1 15"	PIPE CULV CL A TYP 1 EQRS 21"	PIPE CULV CL A TYP 1 EQRS 36"	REMOVAL EXISTING FLARED END SEC	REMOVE CONC BOX CUL END SEC	CONC END SEC STD 542001 18", 1:2	METAL FLARED END SEC 15"	CONC END SEC STD 542011 21", 1:3	CONC END SEC STD 542011 21", 1:4	CONC END SEC STD 542011 36", 1:4
STA		TYPE	FOOT	FOOT	FOOT	FOOT	FOOT	EACH	EACH	EACH	EACH	EACH	EACH	EACH
394+00	LT/RT	METAL PRECAST	54	54		54		2				2		
394+00 (FE)	LT	METAL PRECAST	26	26	26						2			
368+00	LT/RT	CON PRECAST	50					2		2				
299+72	LT/RT	PC TAPER/GRATE	42			84			2				4	
262+19	LT	CON PRECAST	76	6			6	1						1
210+24	LT	METAL PRECAST	54	8			8	1						1
TOTAL				94	26	138	14	6	2	2	2	2	4	2

DRAINAGE SCHEDULE								
LOCATION	SIDE	END SECTIONS EXISTING	LENGTH	BOX CULVERT REMOVAL	REMOVE CONC BOX CUL END SEC	SNGL CELL PREC TAPERED END SEC 3X2, 1:4	TRAVERSABLE PIPE GRATE FOR CONC END SEC	INSERTION CULVERT LINER 24"
			FOOT	FOOT	EACH	EACH	FOOT	FOOT
344+37	LT/RT	METAL PRECAST	54					54
325+67	LT/RT	PC TAPER/GRATE	42					42
299+72	LT/RT	PC TAPER/GRATE	42	42				
272+67	LT/RT	PC TAPER/GRATE	42		2	2	14	
262+73	LT/RT	CON PRECAST	96				4	
TOTAL				42	2	2	18	96

PATCHING SCHEDULE					
LOCATION	PATCH LENGTH	PATCH WIDTH	CLASS B PATCH TYPE II 14"	DOWEL BAR 1 1/2"	SAW CUTS
STA	FOOT	FOOT	SQ YD	EACH	FOOT
394+00	6.5	26	19	23	91
299+72	11	26	32	23	100
TOTAL			51	46	191

CULVERT CLEANING SCHEDULE				
STATION	TYPE/SIZE	LOCATION DESCRIPTION	BOX CULV TO BE CLEANED	PIPE CULV CLEANED 18"
			EACH	FOOT
750+38	3X2 BOX	0.2 MI EAST OF 3000E RD	1	
407+90	3X2 BOX	ON N-S LEG; 0.2 MI SOUTH OF NORTH CURVE	1	
355+00	3X2 BOX	0.75 MI WEST OF 3200E RD	1	
315+87	18" CLAY	WEST LEG OF 3200E RD INTERSECTION		50
315+20	18" CLAY	EAST LEG OF 3200E RD INTERSECTION		50
272+67	3X2 BOX	0.2 MI WEST OF 3300E RD	1	
213+60	3X2 BOX	0.1 MI WEST OF 3400E RD	1	
TOTAL			5	100

EXCAVATION SCHEDULE		
LOCATION	TRENCH BACKFILL	FURNISHED EXCAVATION
STA	CU YD	CU YD
394+00	9	5
299+72	17	10
TOTAL	26	15

DITCH CLEANING SCHEDULE						
LOCATION			SIDE	FLOW DIRECTION	GRADING & SHAP DITCH	
					FOOT	
STA 641+00	TO	STA 643+50	NORTH	EAST	250	
STA 430+50	TO	STA 426+50	SOUTH	WEST	400	
STA 395+00	TO	STA 393+00	BOTH	WEST	400	
STA 369+00	TO	STA 367+00	BOTH	SOUTHWEST	400	
STA 300+72	TO	STA 298+72	BOTH	SOUTH	400	
STA 250+00	TO	STA 248+00	SOUTH	EAST	200	
STA 210+40	TO	DOWNSTREAM	SOUTH	SOUTH	100	
TOTAL					2150	

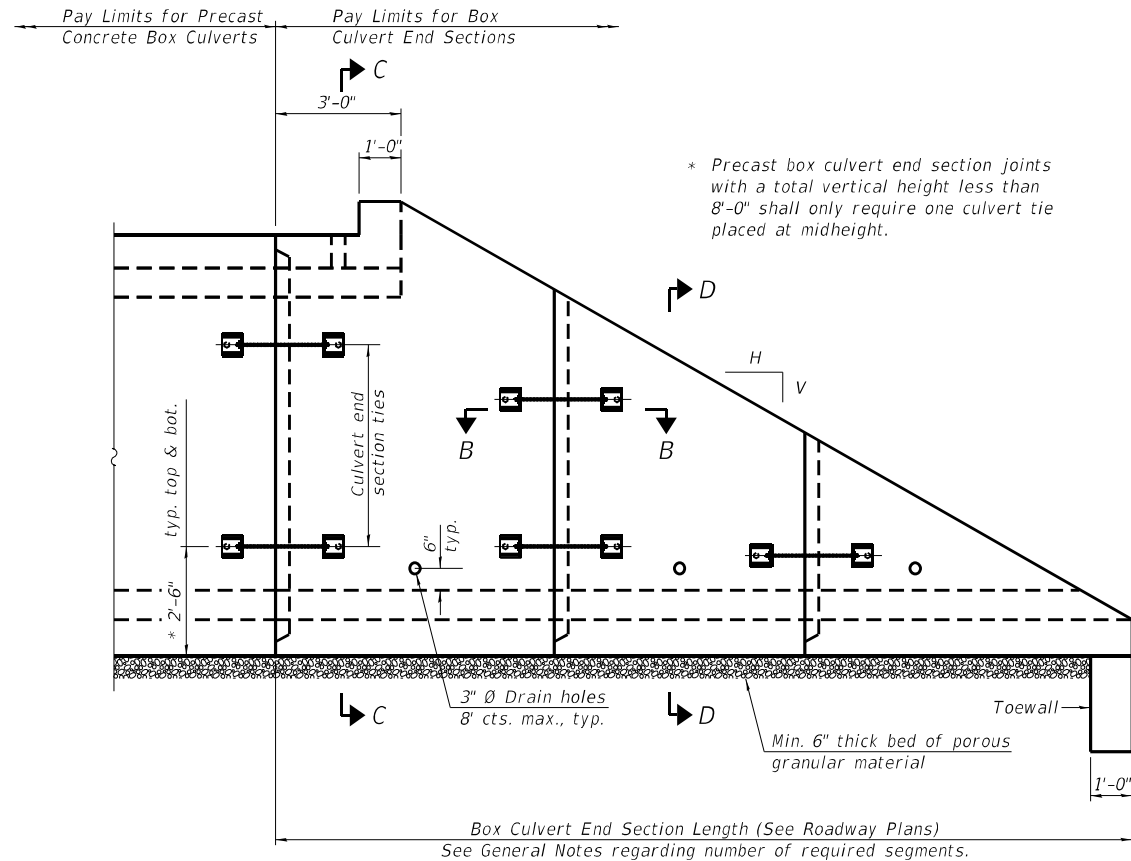
MODEL: Default  
 FILE: \\nlsr01\pub\harcourt\dot\Documents\DOT\_Offices\Dir\dot\_3\Projects\0366A87\CADDData\0366A87-dht-sch-schedule.dgn

USER NAME = DOYLEMT	DESIGNED -	REVISED -
	DRAWN -	REVISED -
PLOT SCALE = 100.0000' / in.	CHECKED -	REVISED -
PLOT DATE = 2/5/2020	DATE -	REVISED -

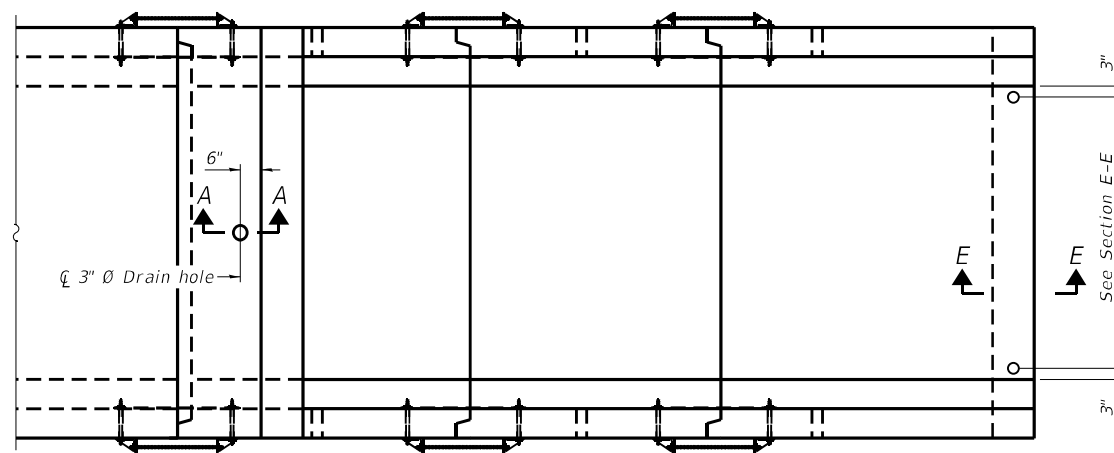
**STATE OF ILLINOIS**  
**DEPARTMENT OF TRANSPORTATION**

SCHEDULE OF QUANTITIES			
SCALE:	SHEET	OF SHEETS	STA. TO STA.

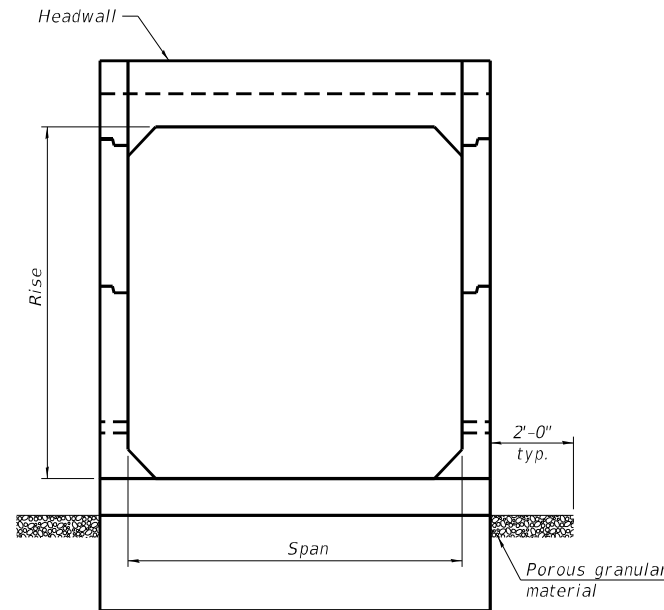
F.A.P. RTE.	SECTION	COUNTY	TOTAL SHEETS	SHEET NO.
681	(114)RS-5, (115)RS-4	LIVINGSTON	25	14
				CONTRACT NO. 66A87
		ILLINOIS	FED. AID PROJECT	



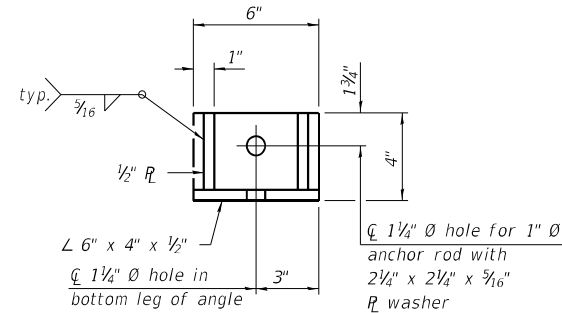
ELEVATION



PLAN



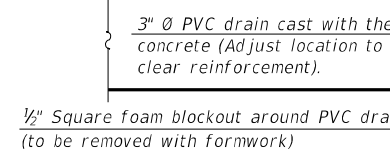
END VIEW



RESTRAINT ANGLE DETAIL

12" x 12" x 6" block of CA5, CA7, or CA11 coarse aggregate placed over drain opening. Block of aggregate shall be completely wrapped in nonwoven geotextile fabric.

Provide a double layer of 12" x 12" nonwoven geotextile fabric centered over the drain hole. Fabric shall be sealed to the concrete with mastic.



SECTION A-A

(All costs associated with furnishing and constructing the above drain detail will not be measured for payment but shall be included in the contract unit price for the associated work.) (Sheet 1 of 2)

**GENERAL NOTES**  
 Box Culvert End Sections shall be constructed according to the requirements of Section 540 of the Standard Specifications except as modified herein. This work will be measured for payment as each, with each end of each culvert being one each. End sections will be paid for at the contract unit price per each for Box Culvert End Sections of the culvert number specified.

Typical box section dimensions, materials, and reinforcement details for Box Culvert End Sections shall be according to the requirements of ASTM C 1577 as required for the design of the portion of the culvert within the limits of Precast Concrete Box Culverts except as modified herein.

Number of segments shown in Elevation is for example only. Length and number of precast box sections required to construct Box Culvert End Sections shall be determined by the Contractor.

See roadway plans for embankment slope (V:H).

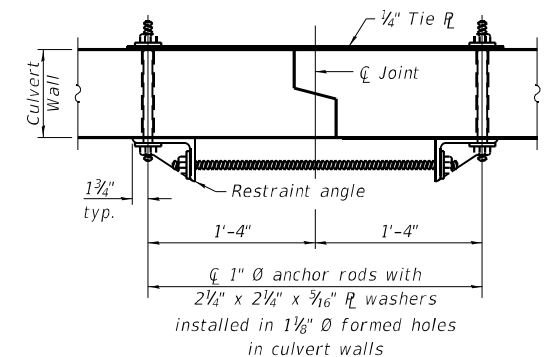
1" Ø anchor rods for the culvert ties shall conform to the requirements of ASTM F1554, Grade 105. Structural steel for tie plate and restraint angle shall conform to the requirements of Article 1006.04 of the Standard Specifications. All components of the culvert tie detail shall be galvanized according to the requirements of AASHTO M 111 or M 232 as applicable. 2 1/4" x 2 1/4" x 3/16" plate washers shall be provided under each nut required for the anchor rods. Anchor rods connecting precast sections shall be brought to a snug tight condition followed by an additional 1/2 turn on one of the nuts for anchor rods installed in the walls. Match marks shall be provided on the bolt and nut to verify relative rotation between the bolt and the nut. Holes in the walls for the culvert tie assembly may be drilled using core bits in lieu of using formed holes.

All costs associated with furnishing and installing or constructing the toewall and culvert ties will not be measured for payment but shall be included in the contract unit price for Box Culvert End Sections of the culvert number specified.

Drain holes shall conform to the requirements of Article 503.11 of the Standard Specifications unless noted otherwise.

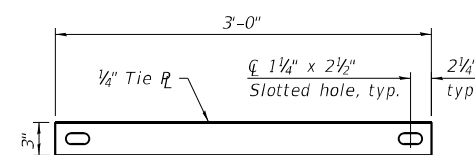
Nonwoven geotextile fabric shall conform to the requirements of Article 1080.01. The minimum weight of the fabric shall be 6 oz. / sq. yd..

For end sections with traversable pipe grate systems, see grate detail sheet for required modifications.



SECTION B-B

(Showing end section tie details)



TIE PLATE DETAIL

SCB-TES

2-17-2017

STATE OF ILLINOIS  
 DEPARTMENT OF TRANSPORTATION

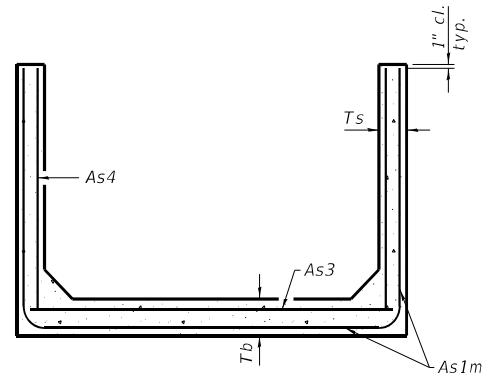
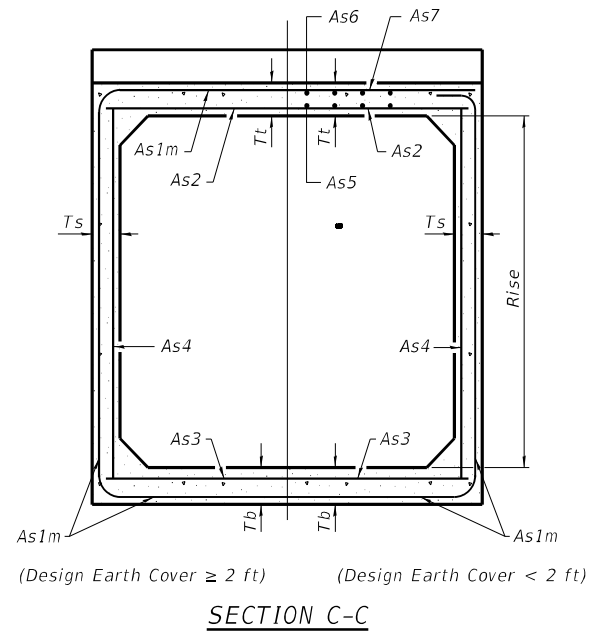
SINGLE CELL PRECAST BOX CULVERT  
 TAPERED END SECTION DETAILS STA 272+67

F.A.P. RTE.	SECTION	COUNTY	TOTAL SHEETS	SHEET NO.
681	(114)RS-5, (115)RS-4	LIVINGSTON	25	15
CONTRACT NO. 66A87				

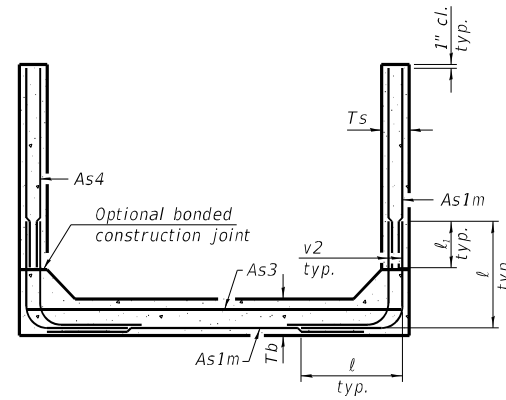
SCALE: SHEET 1 OF 2 SHEETS STA. TO STA.

ILLINOIS FED. AID PROJECT

MODEL Path: \\p01\home\dot\illinois\gov\PIWDOT\Documents\DOT\_Offices\District\_3\Projects\10366887\CADD\Drawings\24\scb-tes-01.dgn  
 FILE NAME: \\p01\home\dot\illinois\gov\PIWDOT\Documents\DOT\_Offices\District\_3\Projects\10366887\CADD\Drawings\24\scb-tes-01.dgn



SECTION D-D



ALTERNATE SECTION D-D

As1m REINFORCEMENT (in. <sup>2</sup> /ft)											
Ts (in.) \ Rise (ft)	2	3	4	5	6	7	8	9	10	11	12
4	0.19	0.17									
5	0.26	0.21	0.18								
6	0.22	0.26	0.23	0.22							
7	0.25	0.33	0.59	0.27	0.28						
8	0.40	0.35	0.43	0.39	0.36	0.34	0.40				
9	0.44	0.39	0.35	0.43	0.40	0.37	0.36	0.48			
10	0.48	0.42	0.38	0.47	0.44	0.41	0.38	0.42	0.56		
11	0.52	0.45	0.54	0.50	0.46	0.44	0.41	0.46	0.50	0.65	
12	0.55	0.49	0.58	0.54	0.50	0.48	0.45	0.46	0.46	0.61	0.75

(As1m reinforcement based upon welded wire reinforcement conforming to AASHTO M 55 or M 221).

**l<sub>1</sub> DIMENSION**

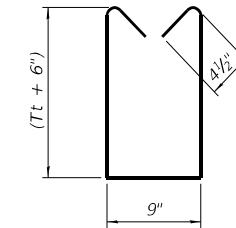
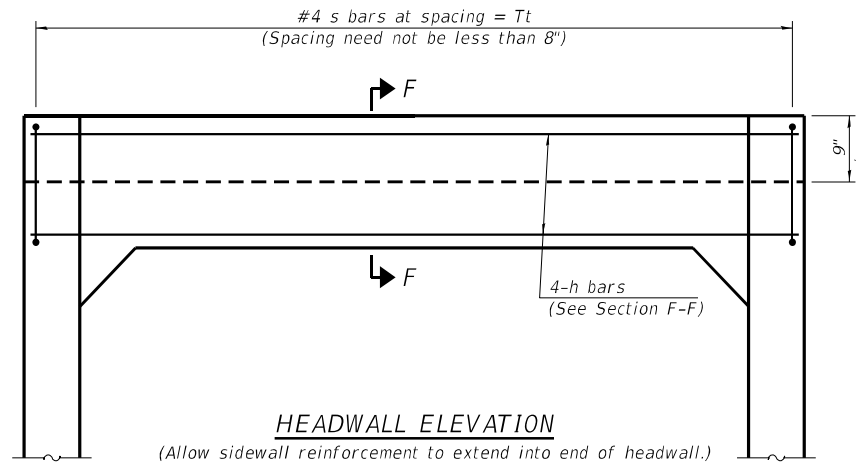
- #3 bar = 2'-0"
- #4 bar = 2'-8"
- #5 bar = 3'-4"
- #6 bar = 3'-11"

**Notes:**

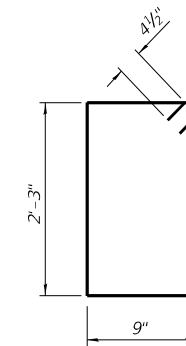
Alternate Section D-D is provided to allow the Contractor the option of casting the bottom slab of the end section first followed by construction of the sidewalls using conventional forming methods. Shop drawings that detail slab thickness and reinforcement layout shall be submitted to the Engineer for review and approval when using Alternate Section D-D.

The size and spacing of the v2 bars shall provide a minimum reinforcement area along each face of the walls (in.<sup>2</sup>/ft.) equal to 1.10\*(As1m). v2 bars may consist of #3 thru #6 size reinforcement bars and the longitudinal spacing shall not exceed the lesser of the wall thickness or 8 inches.

Bonded construction joints shall be prepared according to Article 503.09 of the Standard Specifications.



BAR s



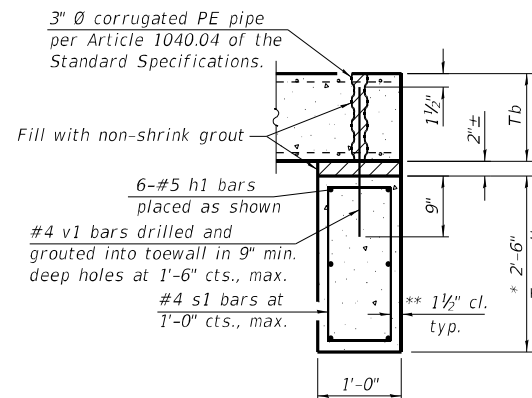
BAR s1

**TOEWALL CONSTRUCTION SEQUENCE**

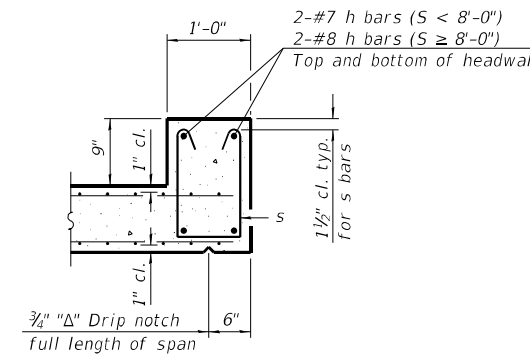
1. Perform excavation and construct toewall.
2. Backfill according to the applicable paragraphs of Article 502.10 of the Standard Specifications and place bedding for precast box culvert end sections.
3. Set precast box culvert end section.
4. Drill and epoxy grout reinforcement in toewall in accordance with Section 584 of the Standard Specifications.
5. Pressure grout voids using non-shrink grout conforming to Section 1024 of the Standard Specifications.

\* The Contractor may furnish a precast or cast-in-place toewall. The Contractor shall be responsible for the strength and stability of the precast toewall during handling. Additional lifting points may be required depending upon the length of the toewall or the Contractor may need to modify the design of the toewall for the proposed handling the method.

\*\* If soil conditions permit, the sides of the toewall may be poured directly against the soil. The clear cover on the sides of the toewall shall be increased to 3" by increasing the thickness of the toewall.



SECTION E-E



SECTION F-F

SCB-TES

2-17-2017

(Sheet 2 of 2)

MODEL: Default  
 FILE NAME: p:\pub\mranon.dwt\illinois.gov\PWIDOT\Documents\DOT\_Offices\District\_3\Projects\CD366A87\CADD\Drawn\366A87\Drawings\scb-tes.dgn

USER NAME = DOYLEMT	DESIGNED -	REVISED -
	DRAWN -	REVISED -
PLOT SCALE = 100,0000' / in.	CHECKED -	REVISED -
PLOT DATE = 1/31/2020	DATE -	REVISED -

STATE OF ILLINOIS  
DEPARTMENT OF TRANSPORTATION

SINGLE CELL PRECAST BOX CULVERT  
TAPERED END SECTION DETAILS STA 272+67

SCALE: SHEET 1 OF 2 SHEETS STA. TO STA.

F.A.P. RTE.	SECTION	COUNTY	TOTAL SHEETS	SHEET NO.
681	(114)RS-5, (115)RS-4	LIVINGSTON	25	16
CONTRACT NO. 66A87			ILLINOIS FED. AID PROJECT	

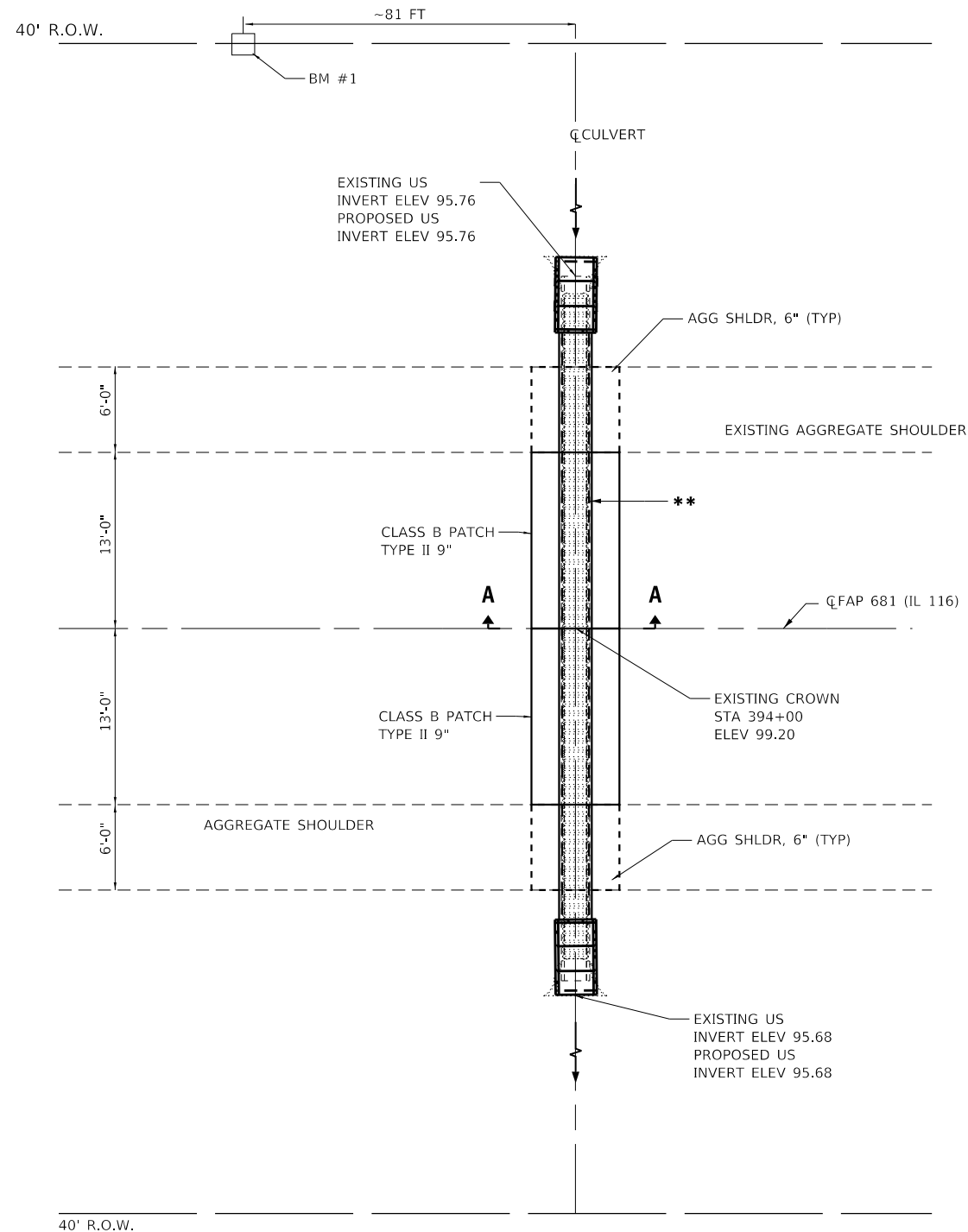


BENCH MARK #1 - CONCRETE PAD (SW CORNER) ELEV 100.00

\*\*EXISTING - PIPE CULVERT REMOVAL (FT), 54' (18"  $\phi$  CLAY PIPE CULVERT);  
REMOVE EXISTING FLARED END SECTIONS (EACH), 2

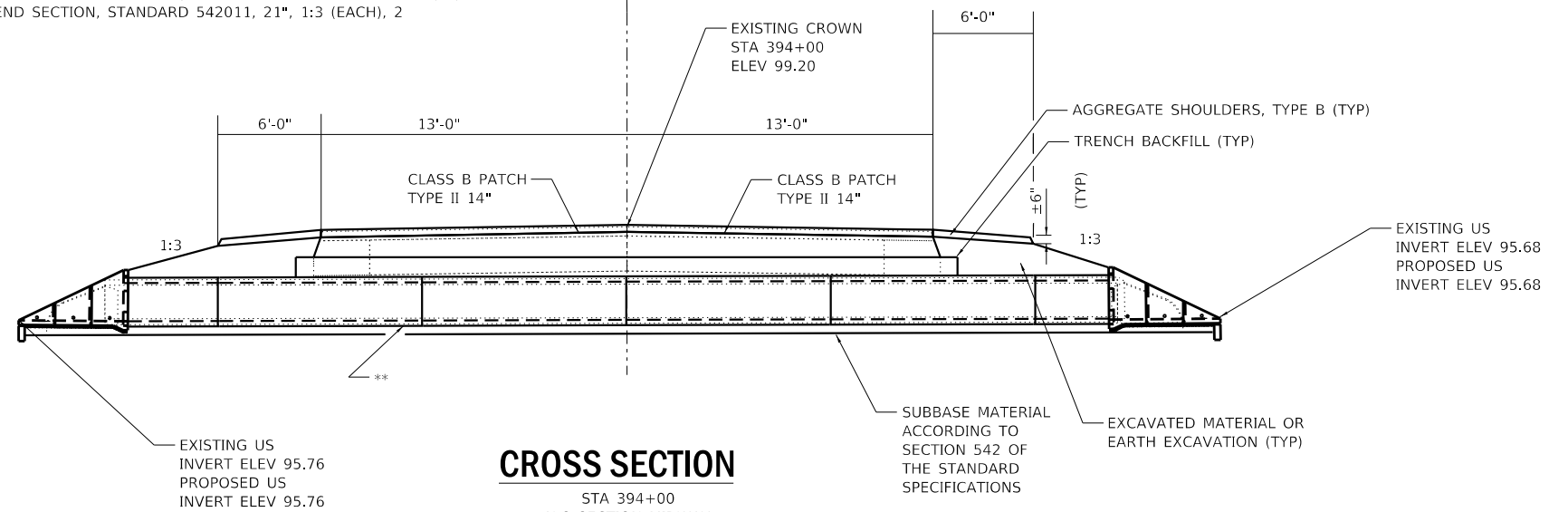
PROPOSED - PIPE CULVERT, CLASS A, TYPE 1, EQUIVALENT ROUND-SIZE 21 INCH (FT), 54';  
CONCRETE END SECTION, STANDARD 542011, 21", 1:3 (EACH), 2

QFAP 681 (IL 116)



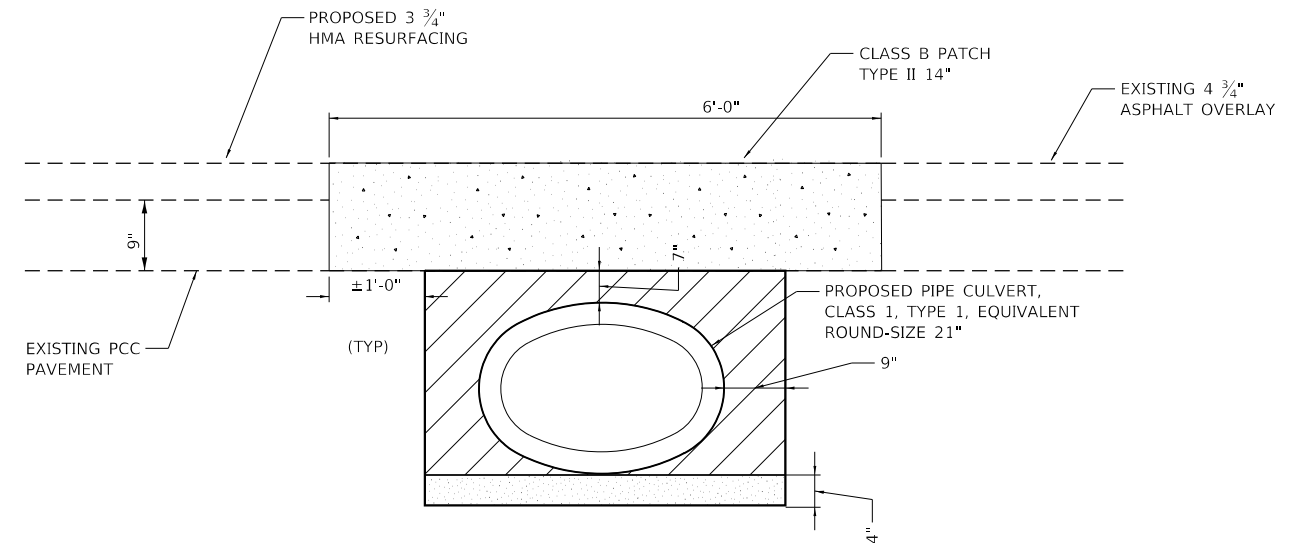
**PLAN**

STA 394+00



**CROSS SECTION**

STA 394+00  
N-S SECTION MIDWAY  
LOOKING SOUTH



**SECTION A-A**

TRENCH BACKFILL

MODEL: Default  
FILE: \\bls01\pub\blsroom\dat\illinois\pcc\pww\DOT\Documents\DOT - Offices\District 3\Projects\ID366A87\CADD\dat\ID366A87\dra\hshp\pcc\plan.dgn

USER NAME = DOYLEMT	DESIGNED -	REVISED -
PLOT SCALE = 100,0000' / in.	DRAWN -	REVISED -
PLOT DATE = 2/5/2020	CHECKED -	REVISED -
	DATE -	REVISED -

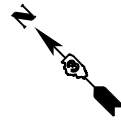
**STATE OF ILLINOIS  
DEPARTMENT OF TRANSPORTATION**

**CULVERT #4974  
STA 394 + 00**

SCALE: SHEET 1 OF 6 SHEETS STA. TO STA.

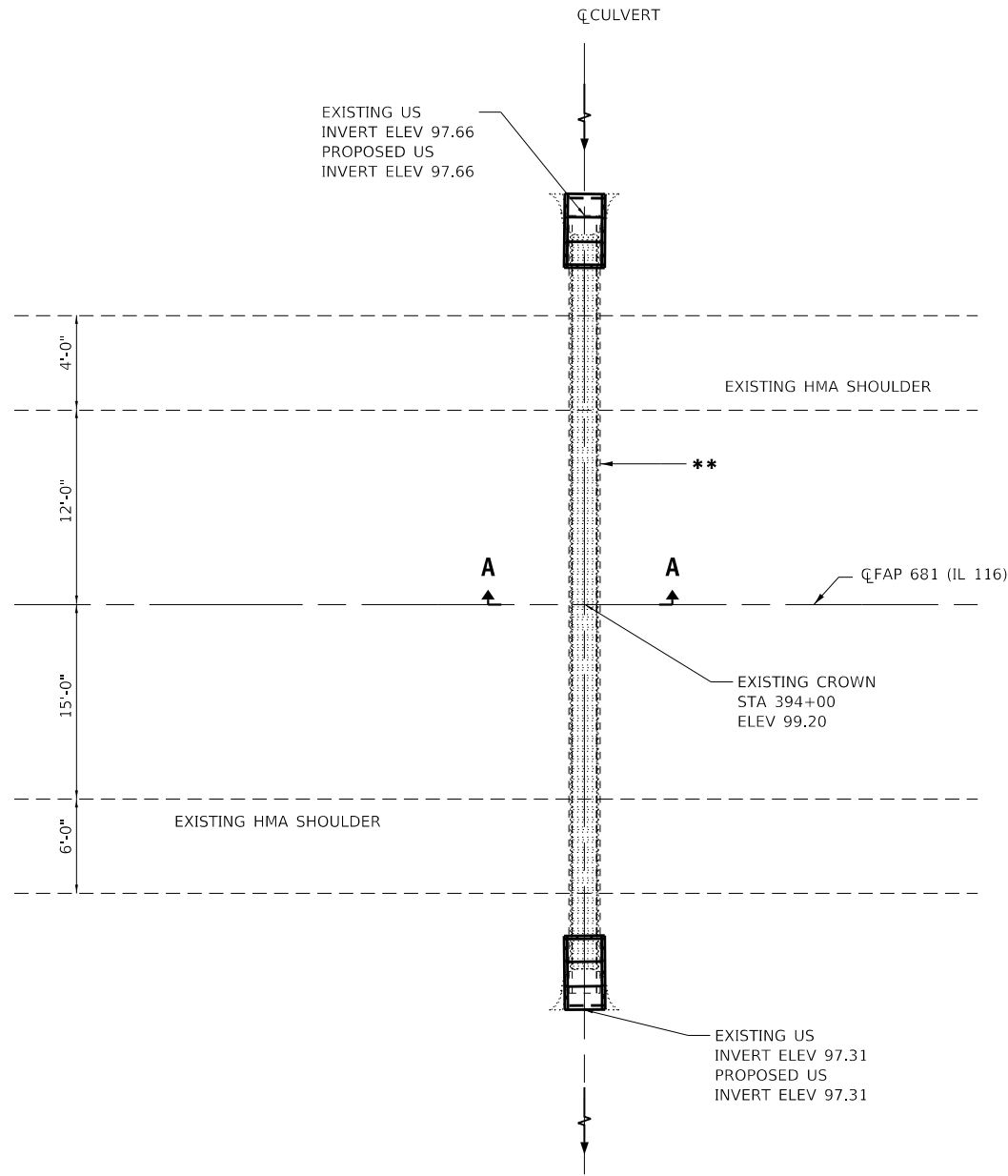
F.A.P. RTE.	SECTION	COUNTY	TOTAL SHEETS	SHEET NO.
681	(114)RS-5, (115)RS-4	LIVINGSTON	25	17
CONTRACT NO. 66A87				
ILLINOIS FED. AID PROJECT				

BENCH MARK #1 - NAIL IN POWER POLE, STA 368+60 - ELEVATION 100.00



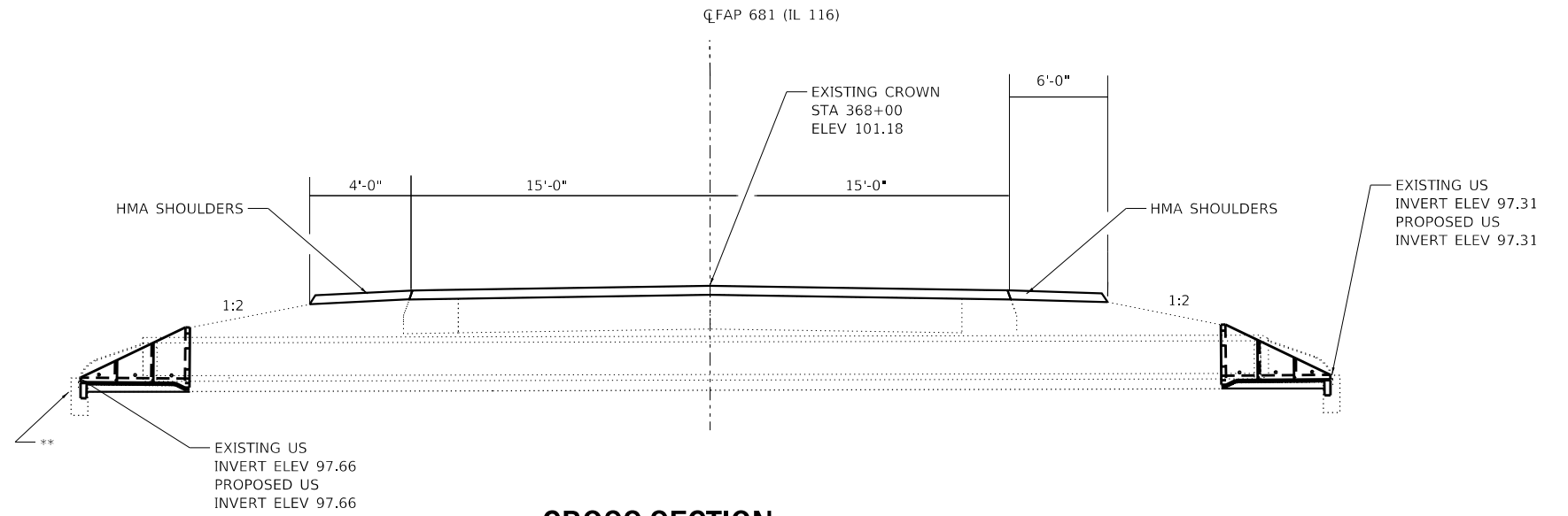
\*\*EXISTING - REMOVE EXISTING FLARED END SECTION (EACH), 2  
 (50' - 18" Ø RCP CULVERT)  
 PROPOSED - CONCRETE END SECTION, STANDARD 542001, 18",  
 1:2 (EACH), 2

40' R.O.W.



**PLAN**

STA 368+00



**CROSS SECTION**

STA 368+00  
 MIDDLE OF CURVE 2  
 LOOKING SOUTHEAST

MODEL: Default  
 FILE: \\nls-px1\pub\room\dat\illinois.gov\PIWDOT\Documents\DOT\_Offices\District\_3\Projects\ID366A87\Cadd\Drawings\Profile.dgn

USER NAME = DOYLEMT	DESIGNED -	REVISED -
	DRAWN -	REVISED -
PLOT SCALE = 100.0000' / in.	CHECKED -	REVISED -
PLOT DATE = 2/5/2020	DATE -	REVISED -

**STATE OF ILLINOIS  
 DEPARTMENT OF TRANSPORTATION**

**CULVERT #1596  
 STA 368 + 00**

SCALE: SHEET 2 OF 6 SHEETS STA. TO STA.

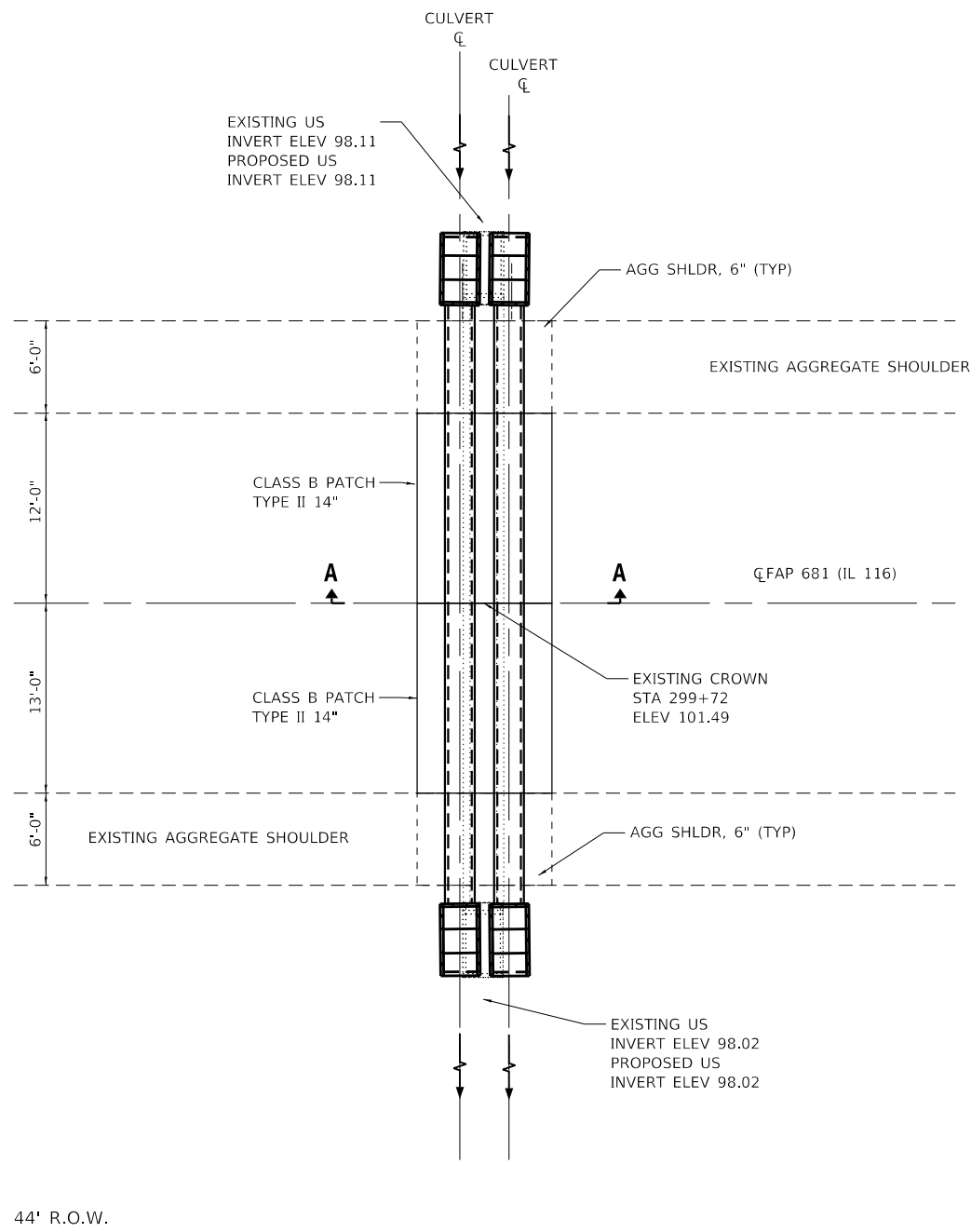
F.A.P. RTE.	SECTION	COUNTY	TOTAL SHEETS	SHEET NO.
681	(114)RS-5, (115)RS-4	LIVINGSTON	25	18
CONTRACT NO. 66A87				
ILLINOIS FED. AID PROJECT				

BENCH MARK #1 - NAIL IN POWER POLE (RIGHT), STA 299+90 - ELEVATION 100.00

**\*\*EXISTING - BOX CULVERT REMOVAL (FOOT), 42 FT (3X2 CONCRETE BOX CULVERT);  
REMOVE CONCRETE BOX CULVERT END SECTION (EACH), 2  
PROPOSED - PIPE CULVERT CLASS A, TYPE 1, EQUIVALENT ROUND-SIZE 21 INCH (FOOT), 84 FT  
(TWIN PIPE CULVERTS);  
CONCRETE END SECTION, STANDARD 542011, 21", 1:4 (EACH), 4**

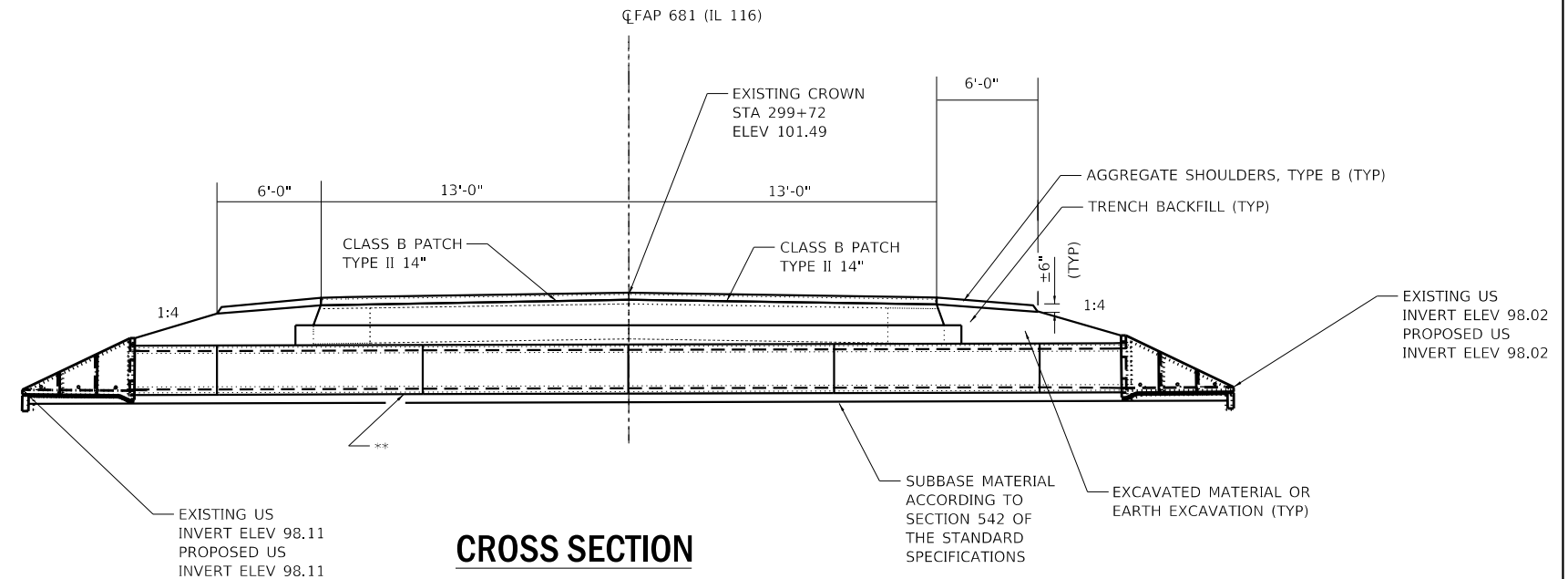


36' R.O.W.



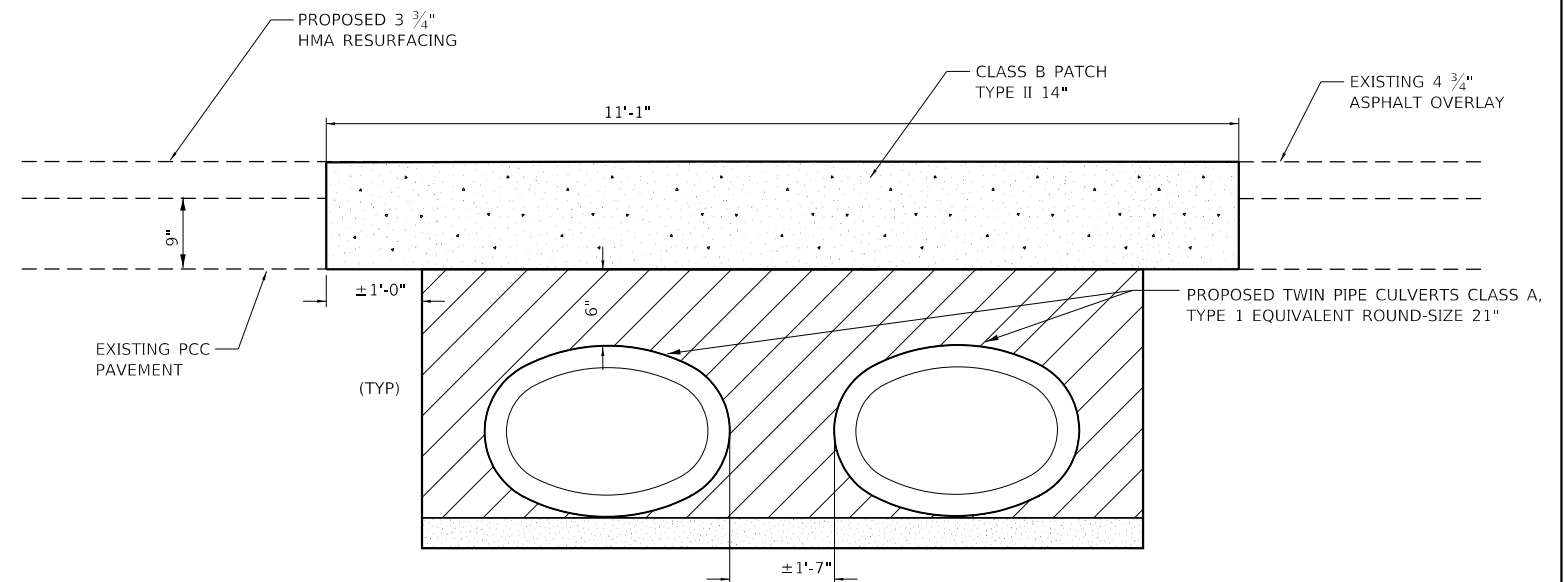
**PLAN**

STA 299+72



**CROSS SECTION**

STA 299+72  
0.3 MI PAST N 3200 E  
LOOKING EAST



**SECTION A-A**



MODEL: Default  
FILE: h:\mhc\proj\pub\room\dat\illinois\pwr\pww\DOT\Documents\DOT - Offices\Illin\ct 3\Projects\ID366A87\Cadd\dat\ID366A87\dra\hmap\p\plan.dgn

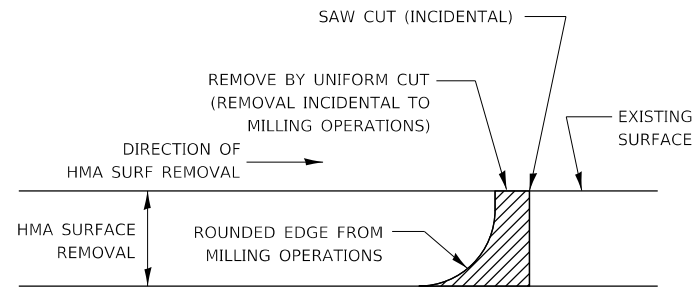
USER NAME = DOYLEMT	DESIGNED -	REVISED -
PLOT SCALE = 100.0000' / in.	DRAWN -	REVISED -
PLOT DATE = 2/5/2020	CHECKED -	REVISED -
	DATE -	REVISED -

**STATE OF ILLINOIS  
DEPARTMENT OF TRANSPORTATION**

**CULVERT #1600  
STA 299 + 72**

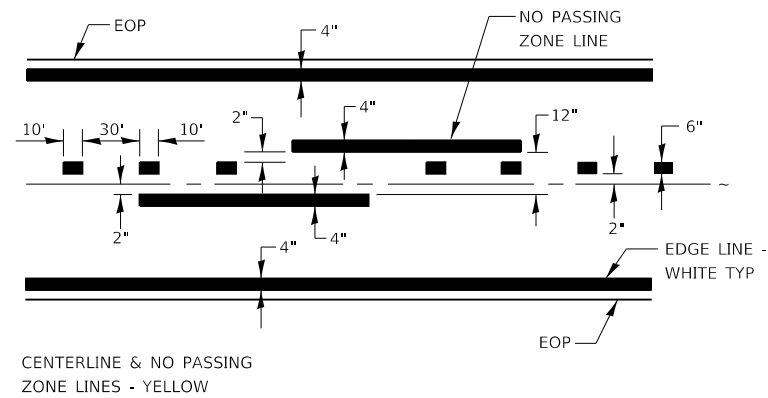
SCALE: SHEET 3 OF 6 SHEETS STA. TO STA.

F.A.P. RTE.	SECTION	COUNTY	TOTAL SHEETS	SHEET NO.
681	(114)RS-5, (115)RS-4	LIVINGSTON	25	19
CONTRACT NO. 66A87				
ILLINOIS FED. AID PROJECT				

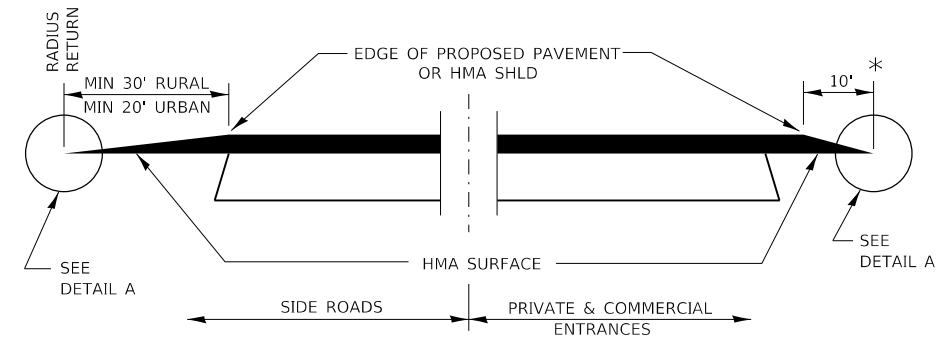


**NOTE:**  
WHEN MILLING OPERATIONS PRODUCE A ROUNDED EDGE, THEN A SAW CUT SHALL BE USED TO MANUFACTURE A PERPENDICULAR EDGE AS SHOWN IN THE DETAIL. THE ENGINEER SHALL BE THE SOLE JUDGE CONCERNING THE USE OF THIS DETAIL

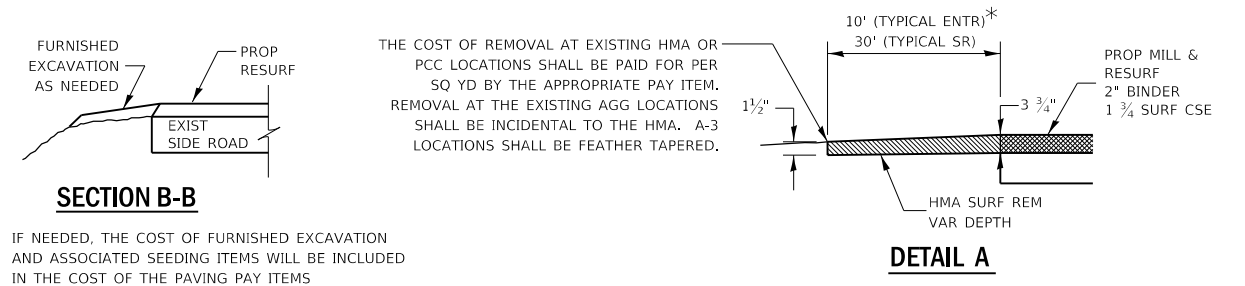
### HMA DETAIL AT BUTT JOINTS



### PAVEMENT MARKING

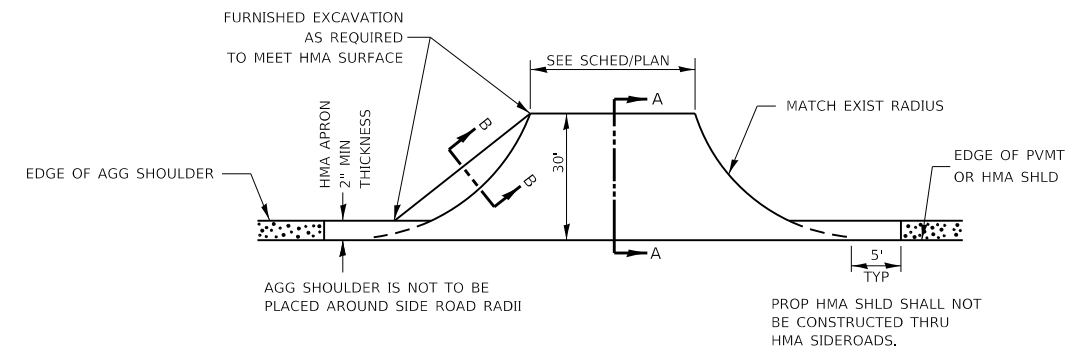


### SECTION A-A DETAILS AT ENTRANCES & SIDE ROADS

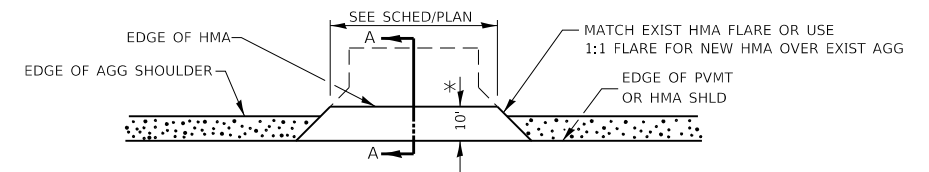


### SECTION B-B

IF NEEDED, THE COST OF FURNISHED EXCAVATION AND ASSOCIATED SEEDING ITEMS WILL BE INCLUDED IN THE COST OF THE PAVING PAY ITEMS



### PLAN AT SIDE ROADS



### PLAN AT PRIVATE & COMMERCIAL ENTRANCES

(DO NOT RESURFACE FIELD ENTRANCES)

\* PROPOSED HMA RESURFACING AT PUBLIC EDUCATIONAL FACILITY ENTRANCES SHALL BE EXTENDED TO THE RIGHT-OF-WAY LIMITS.

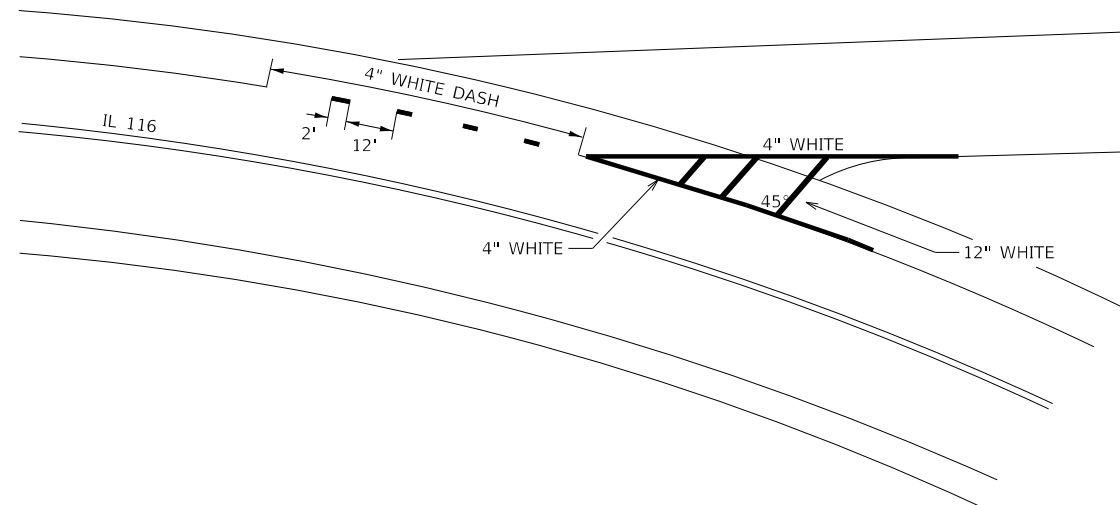
MODEL: Default  
FILE: hma15c\_pavplanroom.dwg  
PROJECT: 0366A87-CD00Data\0366A87-shk-settable.dgn

USER NAME = DOYLEMT	DESIGNED -	REVISED -
PLOT SCALE = 100.0000' / in.	DRAWN -	REVISED -
PLOT DATE = 1/31/2020	CHECKED -	REVISED -
	DATE -	REVISED -

**STATE OF ILLINOIS  
DEPARTMENT OF TRANSPORTATION**

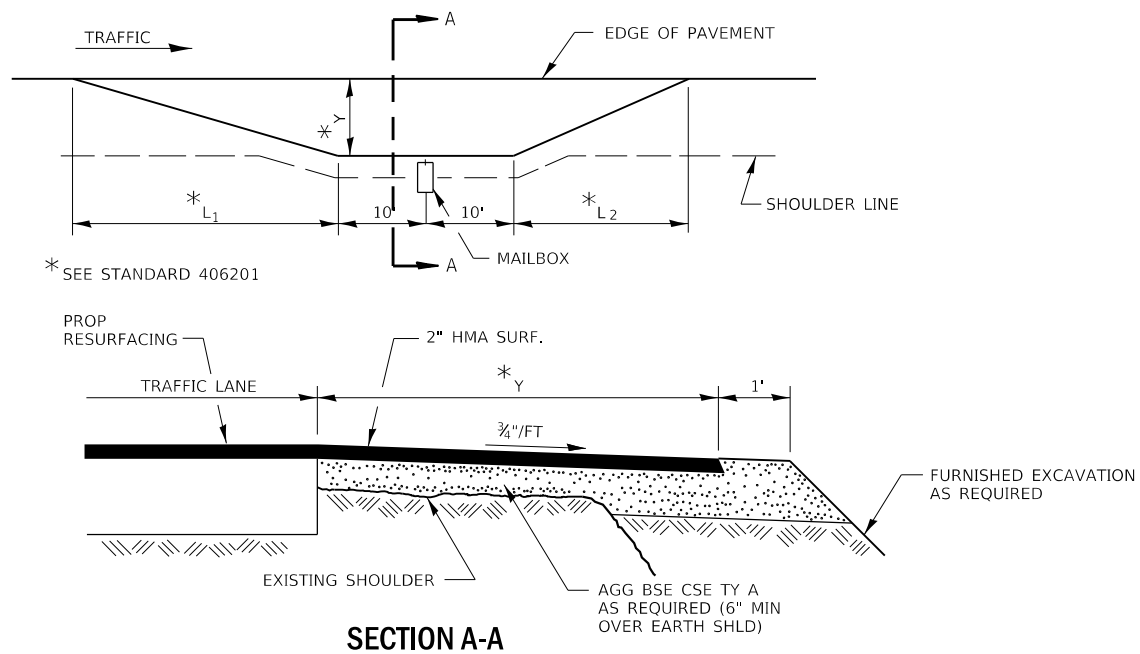
<b>DETAILS</b>			
SCALE:	SHEET 1	OF 4 SHEETS	STA. TO STA.

F.A.P. RTE.	SECTION	COUNTY	TOTAL SHEETS	SHEET NO.
681	(114)RS-5,(115)RS-4	LIVINGSTON	25	20
CONTRACT NO. 66A87				
ILLINOIS FED. AID PROJECT				



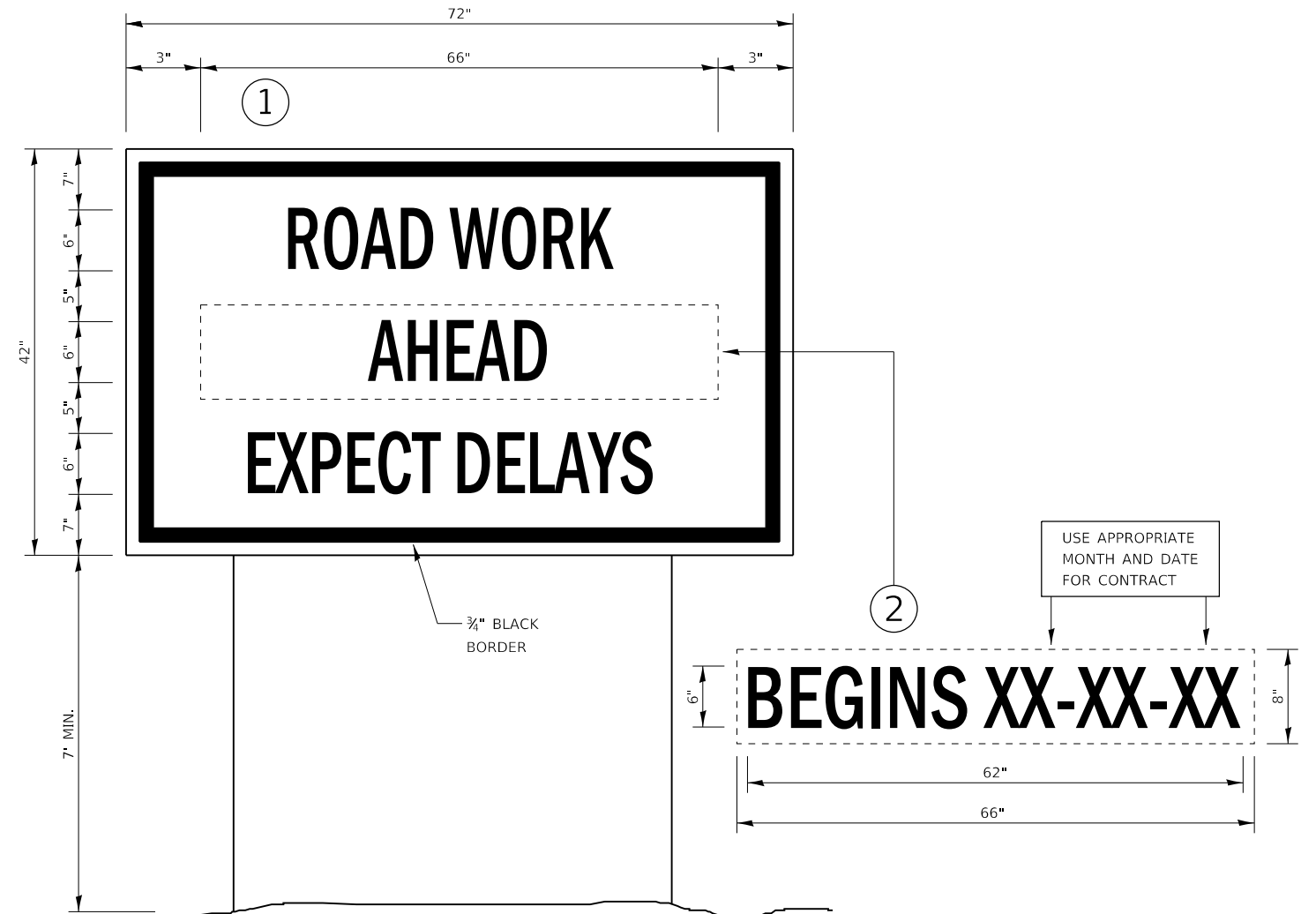
**PAVEMENT MARKING CURVE DETAIL**

SIDE ROAD ENTRANCES OF E 1800 N RD,  
N 3100 E RD (NORTH & SOUTH), & E 1700 N RD



**SECTION A-A**

**RURAL MAILBOX TURNOUT DETAILS**



**TEMPORARY INFORMATION SIGNING**

**NOTES:**

1. USE 6" D BLACK LETTERING ON FLUORESCENT ORANGE BACKGROUND.
2. ERECT SIGNS AT LOCATIONS IN ADVANCE OF THE "ROAD CONSTRUCTION AHEAD" SIGNS AS DIRECTED BY THE ENGINEER.
3. ERECT SIGN ① WITH INSTALLED PANEL ② A MINIMUM OF ONE WEEK PRIOR TO THE START OF THE LANE CLOSURE.
4. REMOVE PANEL ② ON THAT DATE.
5. SEE SPECIAL PROVISION "TEMPORARY INFORMATION SIGNING" FOR ADDITIONAL INFORMATION.
6. WILL BE PAID FOR PER SQ FT AS "TEMPORARY INFORMATION SIGNING". EACH SIGN = 21 SQ FT AND THE DATE PANEL ② WILL NOT BE MEASURED SEPARATELY FOR PAYMENT.

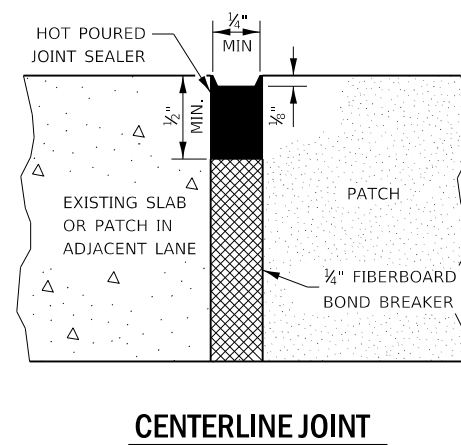
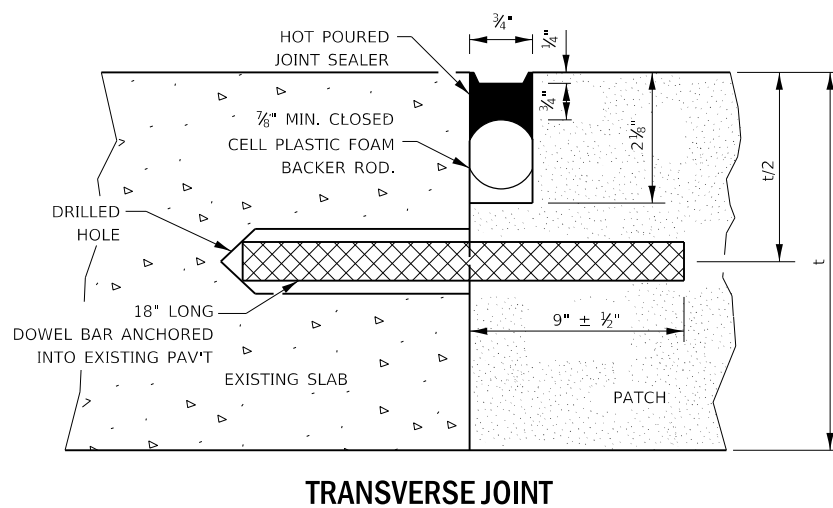
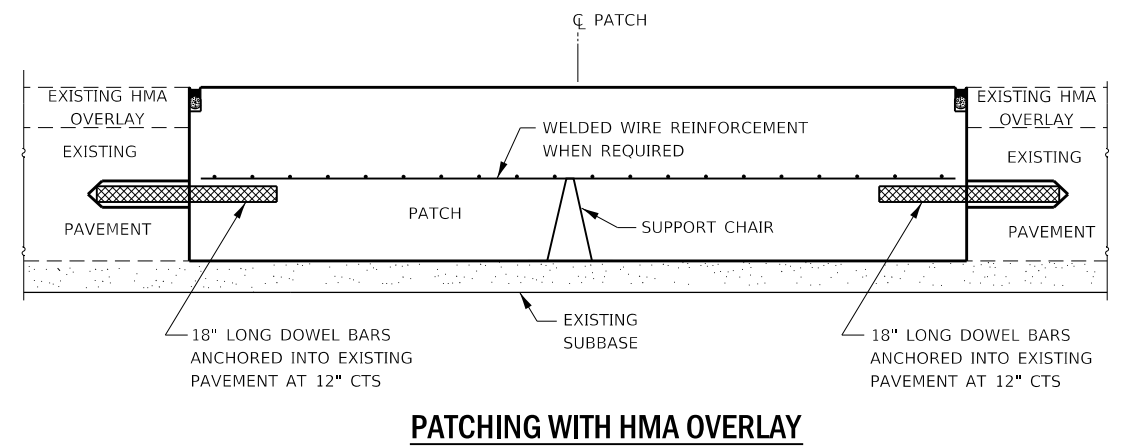
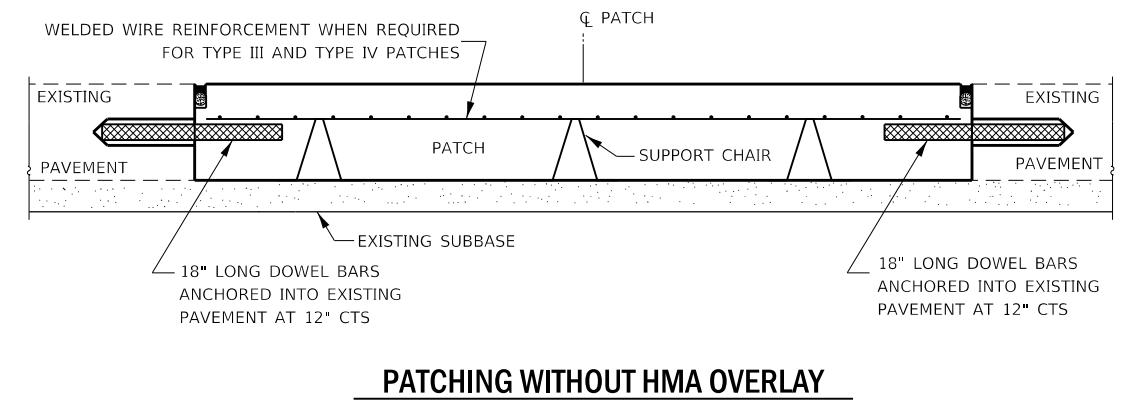
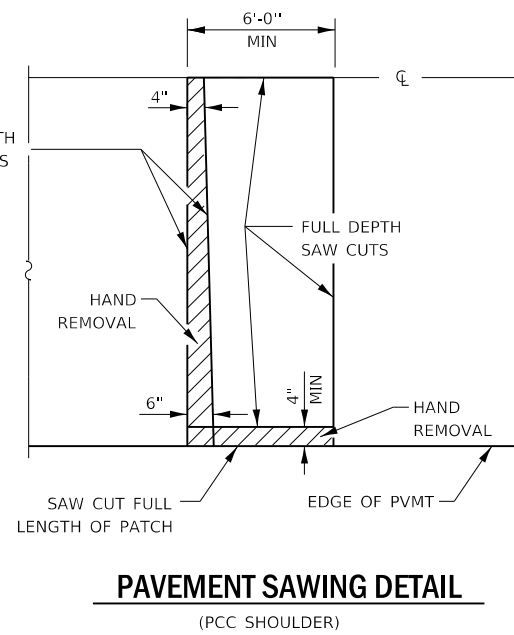
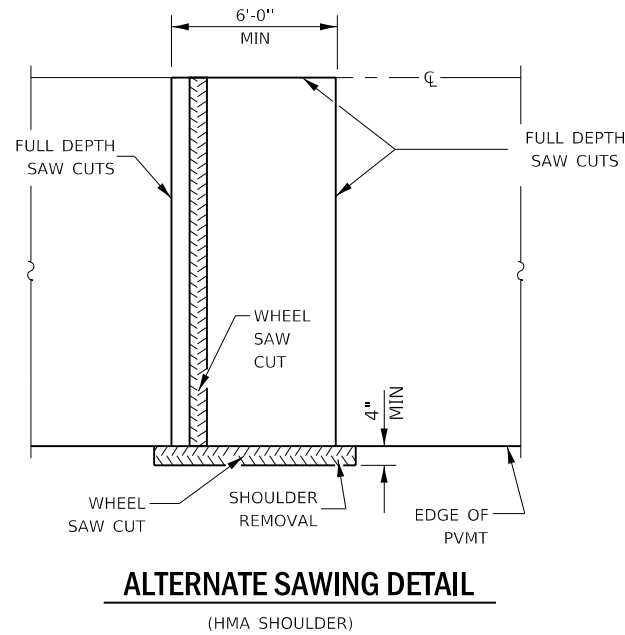
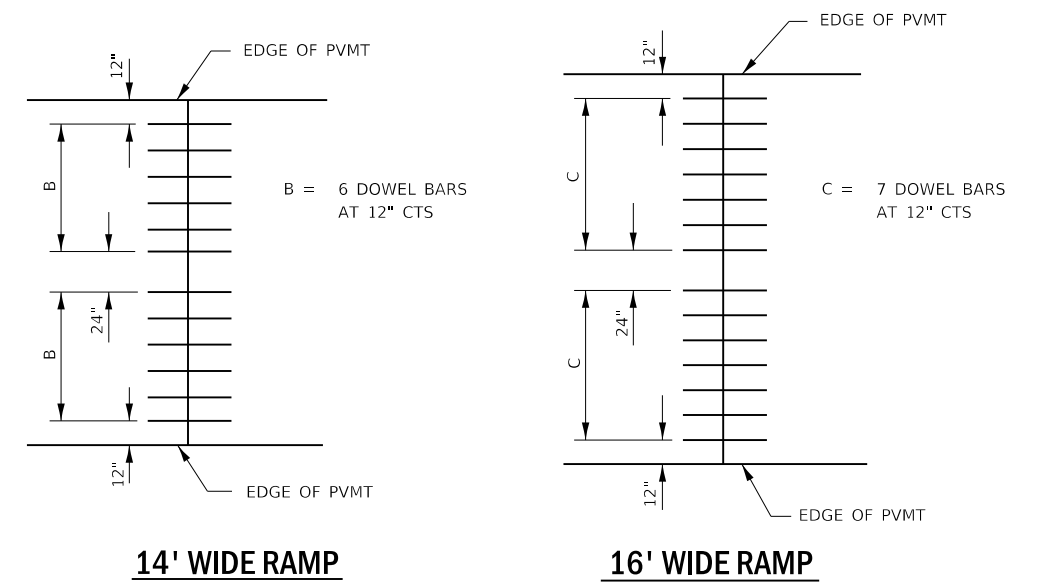
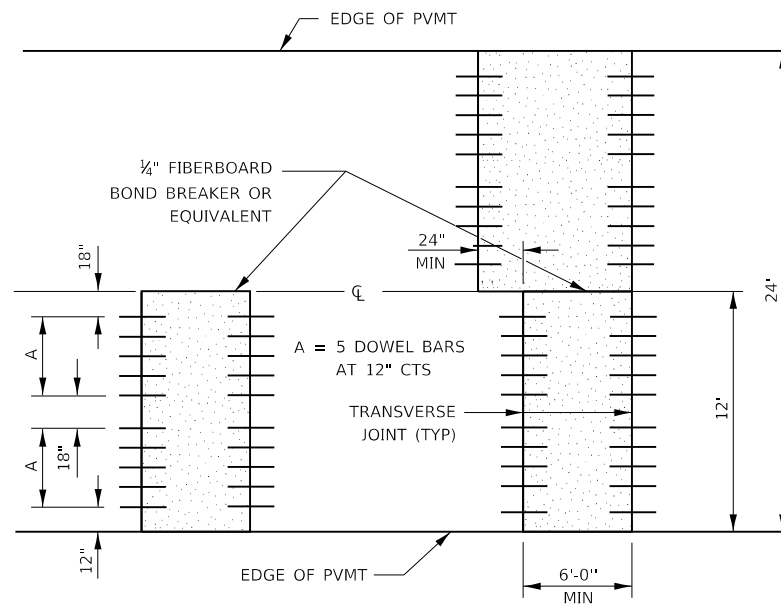
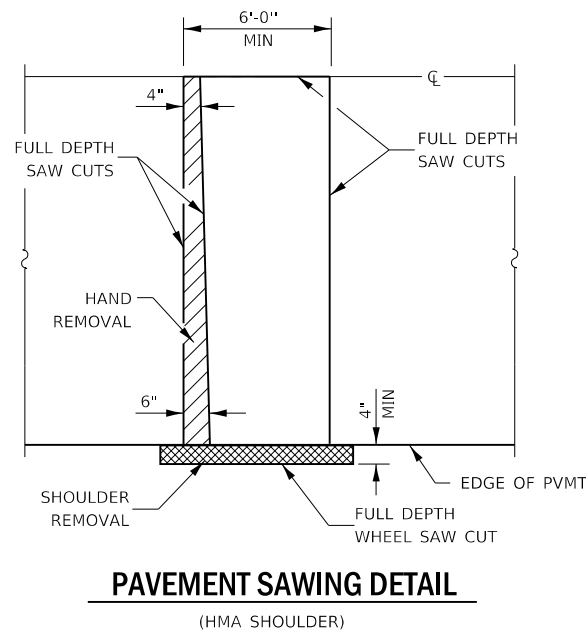
MODEL: Default  
FILE: \\hmc\p\pub\hmcroom\dat\illinois\p\p\DOT\Documents\DOT\_Offices\Illinet\3\Projects\0366A87\CaddData\0366A87-shk-settable.dgn

USER NAME = DOYLEMT	DESIGNED -	REVISED -
PLOT SCALE = 100,0000' / in.	DRAWN -	REVISED -
PLOT DATE = 1/31/2020	CHECKED -	REVISED -
	DATE -	REVISED -

**STATE OF ILLINOIS  
DEPARTMENT OF TRANSPORTATION**

<b>DETAILS</b>			
SCALE:	SHEET 2	OF 4 SHEETS	STA. TO STA.

F.A.P. RTE.	SECTION	COUNTY	TOTAL SHEETS	SHEET NO.
681	(114)RS-5,(115)RS-4	LIVINGSTON	25	21
CONTRACT NO. 66A87				
ILLINOIS FED. AID PROJECT				



DOWEL BAR TABLE		
PAVEMENT THICKNESS	DOWEL BAR DIAMETER	HOLE DIAMETER
8" OR GREATER	1 1/2"	1 3/8"
7" THRU 7.99"	1 1/4"	1 3/8"
LESS THAN 7"	1"	1 1/8"

**GENERAL NOTES**

THE TRANSVERSE JOINTS FOR CLASS B PATCHES SHALL ALIGN WITH JOINTS OR CRACKS IN THE ADJACENT LANE WHENEVER POSSIBLE.

SEE STANDARD 420701 FOR DETAILS OF PAVEMENT WELDED WIRE REINFORCEMENT.

MODEL: Default  
FILE: Model: Pavement.pwd  
PROJECT: 3/Project/36687/Class B Patching Details.dgn

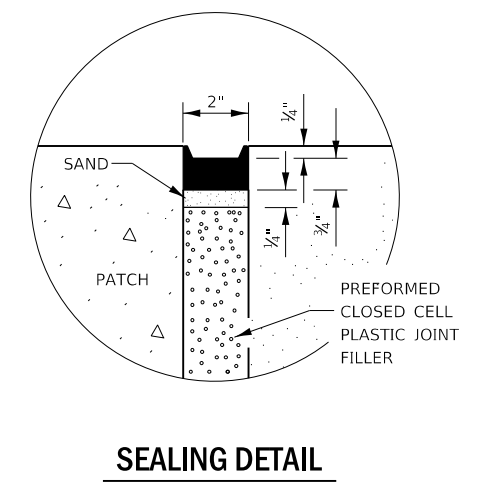
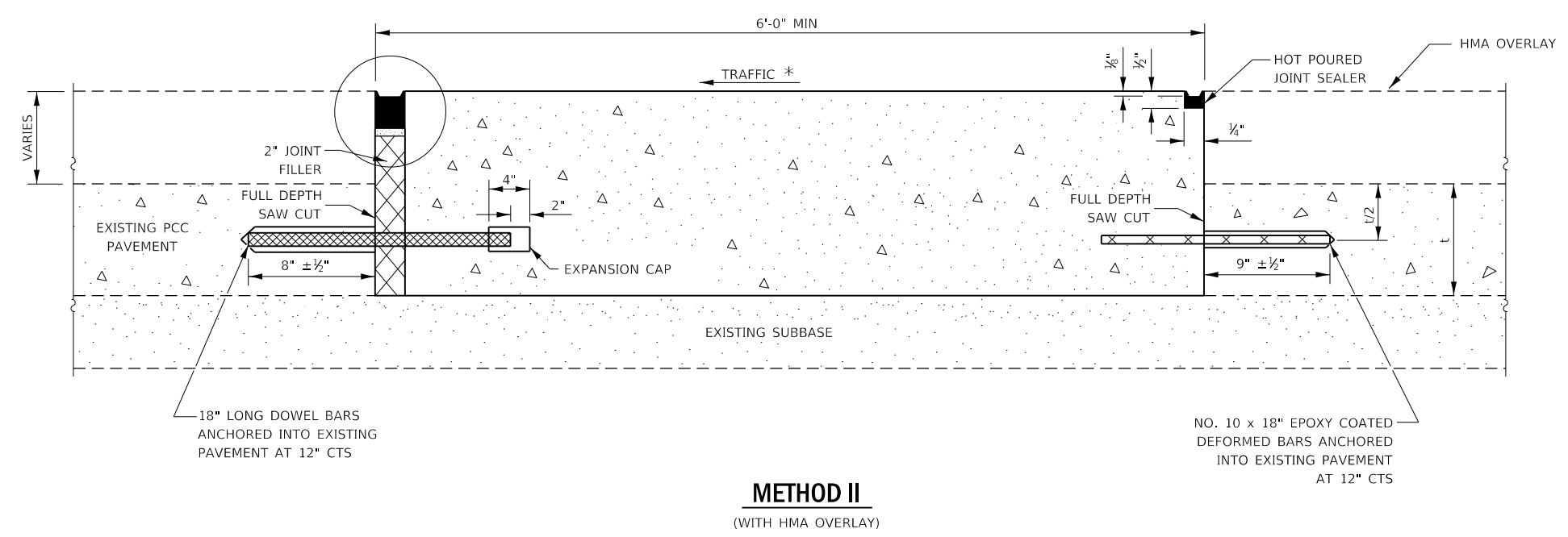
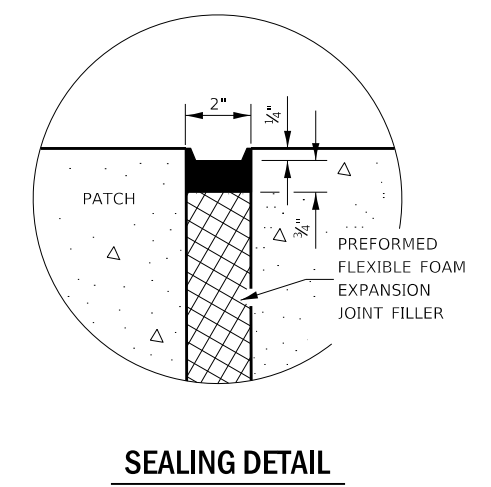
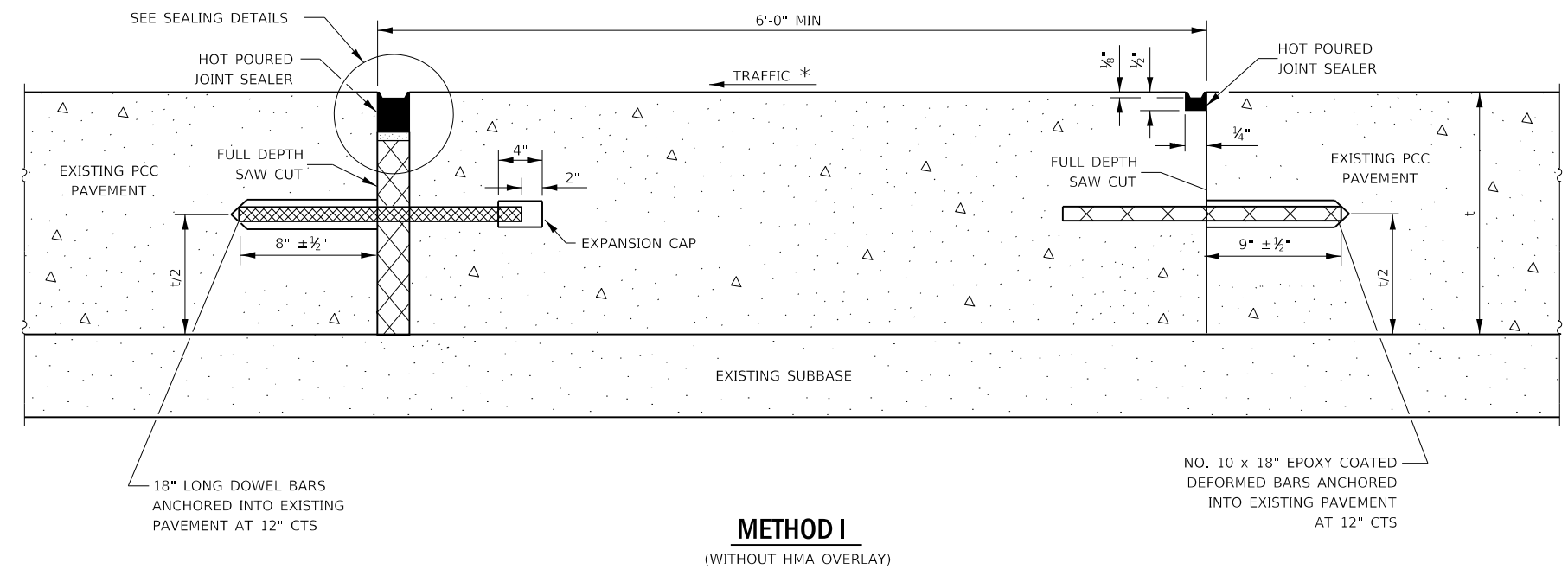
USER NAME = DOYLEMT	DESIGNED -	REVISED -
PLOT SCALE = 100.0000' / in.	DRAWN -	REVISED -
PLOT DATE = 1/31/2020	CHECKED -	REVISED -
	DATE -	REVISED -

**STATE OF ILLINOIS  
DEPARTMENT OF TRANSPORTATION**

**CLASS B PATCHING DETAILS**

SCALE: SHEET 2 OF 4 SHEETS STA. TO STA.

F.A.P. RTE.	SECTION	COUNTY	TOTAL SHEETS	SHEET NO.
681	(114)RS-5,(115)RS-4	LIVINGSTON	25	22
CONTRACT NO. 66A87			ILLINOIS FED. AID PROJECT	



**NOTE**  
\* WHEN RE-ESTABLISHING A TRANSVERSE EXPANSION JOINT ON A TWO-WAY ROAD, REVERSE THE ORIENTATION OF THE DOWEL BARS WITH RESPECT TO TRAFFIC FOR ONE OF THE PATCHES SUCH THAT THE JOINT WILL BE CONTINUOUS ACROSS BOTH LANES.

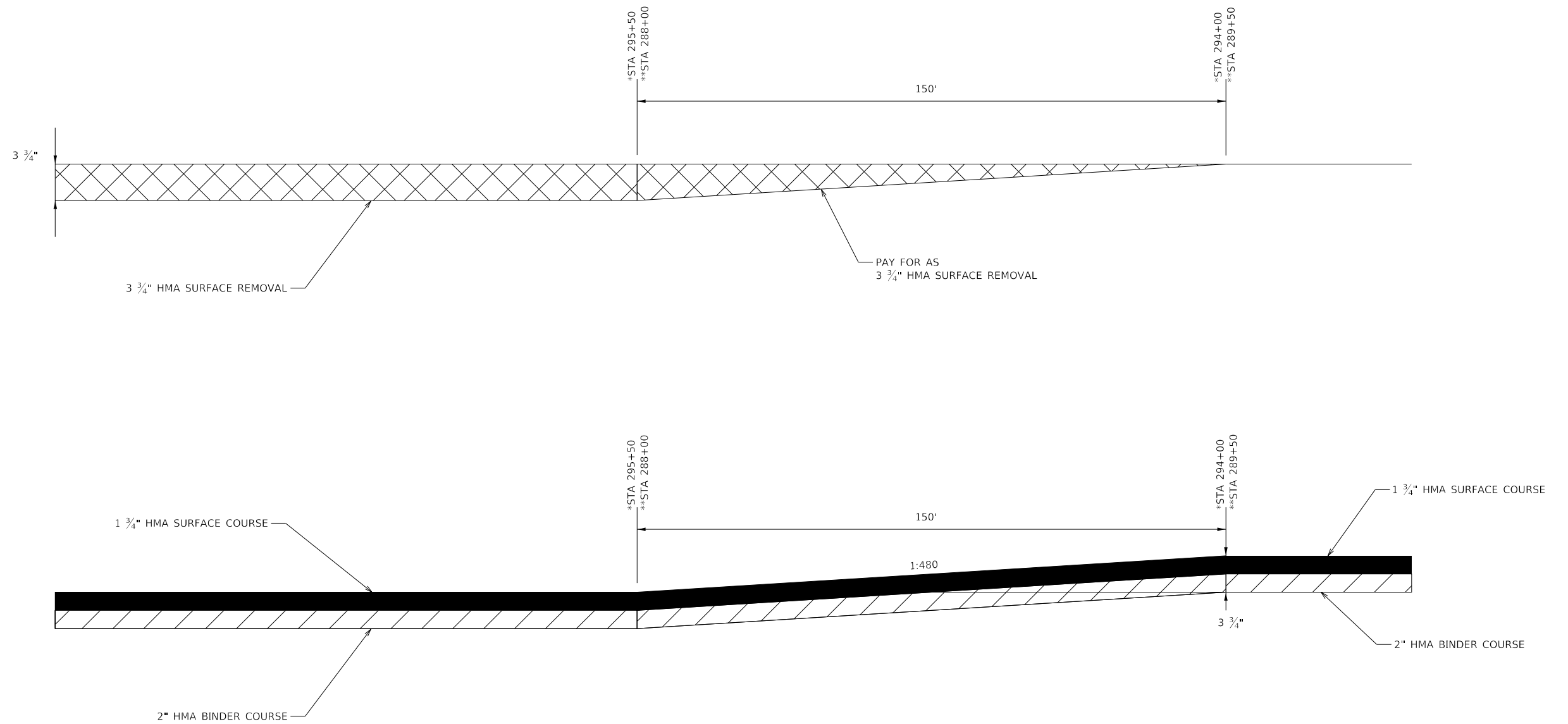
MODEL: Default  
FILE: \\nrcs-prod\pub\room\dat\illinois.gov\PROJECTS\DOT\Office\Drawings\3\Project\366A87\CADD\366A87-24r-seal.dgn

USER NAME = DOYLEMT	DESIGNED -	REVISED -
PLOT SCALE = 100,0000' / in.	DRAWN -	REVISED -
PLOT DATE = 1/31/2020	CHECKED -	REVISED -
	DATE -	REVISED -

**STATE OF ILLINOIS  
DEPARTMENT OF TRANSPORTATION**

<b>CLASS B PATCHING DETAILS</b>			
SCALE:	SHEET 2	OF 4 SHEETS	STA. TO STA.

F.A.P. RTE.	SECTION	COUNTY	TOTAL SHEETS	SHEET NO.
681	(114)RS-5,(115)RS-4	LIVINGSTON	25	23
CONTRACT NO. 66A87				
ILLINOIS FED. AID PROJECT				



### TAPER DETAILS

\*FROM STA: 295+50 TO 294+00  
 \*\*FROM STA: 289+50 TO 288+00

MODEL: Default  
 FILE: h:\mhc\p\suplanroom\dat\illinois.gov\PWIDOT\Documents\DOT\_Offices\Dir\dtc\_3\projects\0366A87\CaddData\0366A87-cht-detail.dgn

USER NAME = DOYLEMT	DESIGNED -	REVISED -
	DRAWN -	REVISED -
PLOT SCALE = 100.0000' / in.	CHECKED -	REVISED -
PLOT DATE = 1/31/2020	DATE -	REVISED -

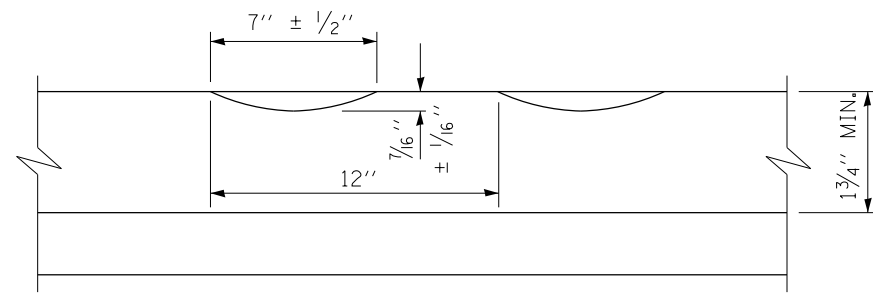
**STATE OF ILLINOIS  
 DEPARTMENT OF TRANSPORTATION**

**DETAILS**

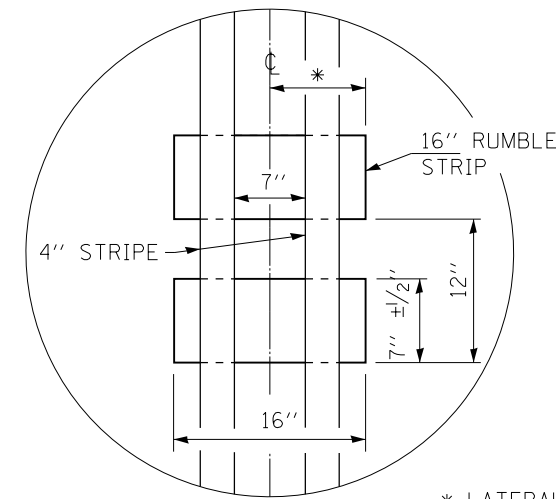
SCALE: SHEET 3 OF 4 SHEETS STA. TO STA.

F.A.P. RTE.	SECTION	COUNTY	TOTAL SHEETS	SHEET NO.
681	(114)RS-5,(115)RS-4	LIVINGSTON	25	24
CONTRACT NO. 66A87				
ILLINOIS FED. AID PROJECT				



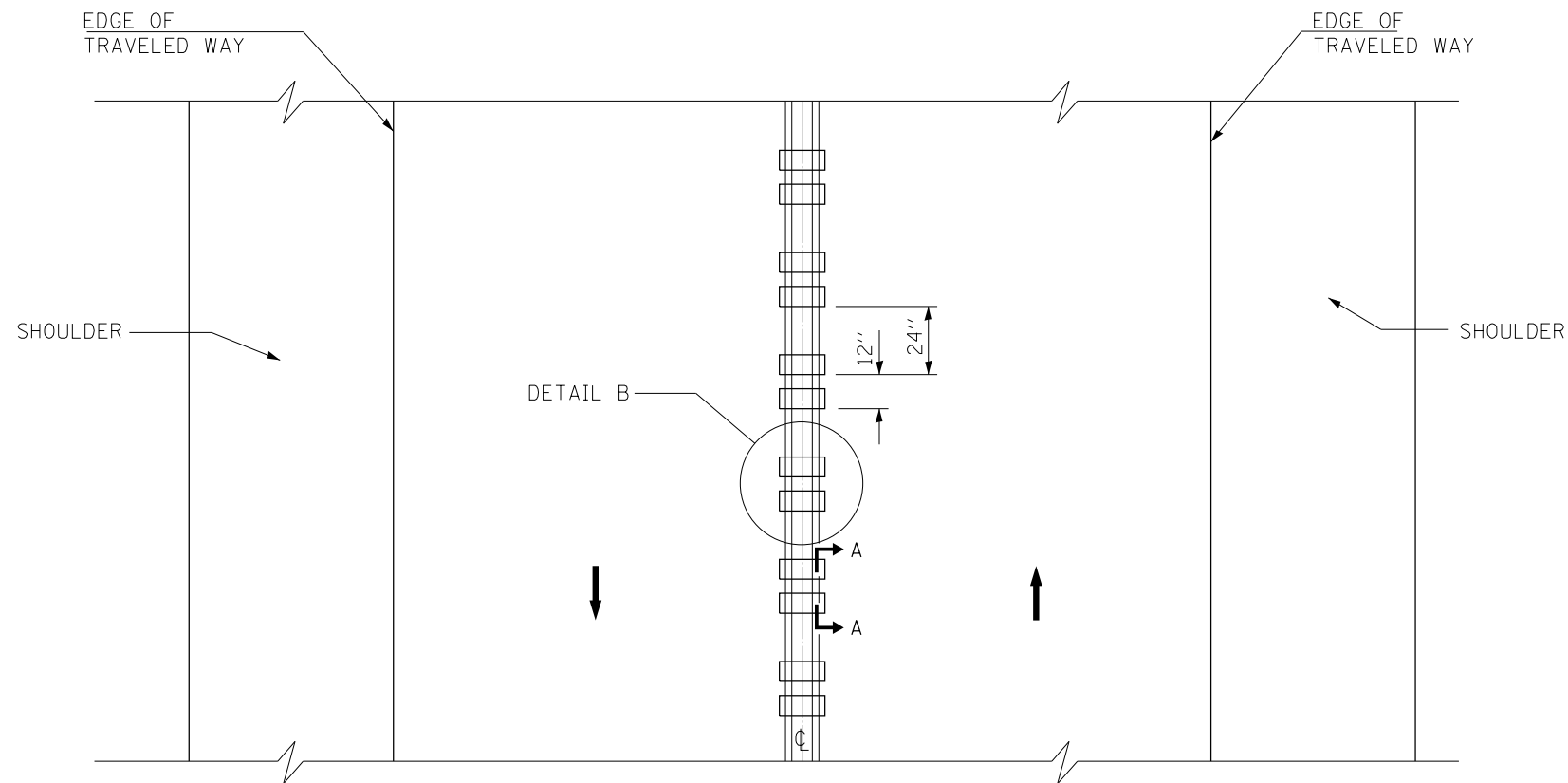


**SECTION A-A**



\* LATERAL DEVIATION SHALL NOT EXCEED ONE INCH IN 100 FEET.

**DETAIL B**



**TWO-WAY ROAD**

**GENERAL NOTES**

SEE STANDARD 780001 FOR STRIPING.

RUMBLE STRIPS SHALL NOT BE PLACED ON BRIDGES.

ALL RUMBLE STRIPS SHALL BE MILLED.

CENTERLINE RUMBLE STRIPS SHALL BE CONTINUOUS THROUGH CONNECTIONS OF SIDEROADS WITH NO LEFT TURN LANES.

DISCONTINUE CENTERLINE RUMBLE STRIPS THROUGH THE LIMITS OF ALL LEFT TURN LANES, INCLUDING ANY LANE TAPER SECTIONS.

WHERE USED, ADJUST SPACING OF RAISED REFLECTIVE PAVEMENT MARKERS TO FALL IN WIDER GAP BETWEEN RUMBLE STRIPS.

CENTERLINE RUMBLE STRIPS SHALL BE PLACED IN NO PASSING ZONES ONLY.

MODEL: Default  
 FILE: \\blm1c1.pw.us.ibm.com\data\blm1c1\pww\DOT\Documents\DOT\_Offices\Dir\dtc\_3\Projects\0366A87\CADD\0366A87\_rht-set\title.dgn

USER NAME = DOYLEMT	DESIGNED -	REVISED -
	DRAWN -	REVISED -
PLOT SCALE = 100.0000' / in.	CHECKED -	REVISED -
PLOT DATE = 1/31/2020	DATE -	REVISED -

**STATE OF ILLINOIS  
DEPARTMENT OF TRANSPORTATION**

**RUMBLE STRIPS CENTERLINE NON-FREEWAY DETAIL**

SCALE: SHEET 4 OF 4 SHEETS STA. TO STA.

F.A.P. RTE.	SECTION	COUNTY	TOTAL SHEETS	SHEET NO.
681	(114)RS-5,(115)RS-4	LIVINGSTON	25	25
CONTRACT NO. 66A87				
ILLINOIS FED. AID PROJECT				