

STATE OF ILLINOIS
DEPARTMENT OF TRANSPORTATION

F.A.P. RTE	SECTION	COUNTY	TOTAL SHEETS	SHEET NO.
328		CLAY	8	1
		ILLINOIS	CONTRACT NO. 74970	

-D7 SHOULDER REPAIRS 2020-1

PROPOSED HIGHWAY PLANS

F.A.P. ROUTE 328 (U.S. ROUTE 45)
SECTION D7 SHOULDER REPAIRS 2020-1

SHOULDER REPAIRS
CLAY COUNTY

C-97-050-20

FOR INDEX OF SHEETS, SEE SHEET NO. 2
ADT (2017) = 2650

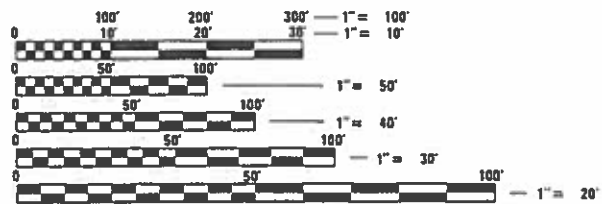


LOCATION OF PROJECT
BEGINNING, STA. 926+00

LOCATION OF PROJECT
ENDING, STA. 968+00



GROSS LENGTH = 4200.00 FT. = 0.80 MILE
NET LENGTH = 4200.00 FT. = 0.80 MILE



FULL SIZE PLANS HAVE BEEN PREPARED USING STANDARD ENGINEERING SCALES. REDUCED SIZED PLANS WILL NOT CONFORM TO STANDARD SCALES. IN MAKING MEASUREMENTS ON REDUCED PLANS, THE ABOVE SCALES MAY BE USED.

J.U.L.I.E.
JOINT UTILITY LOCATION INFORMATION FOR EXCAVATORS
1-800-892-0123
OR 811

PROJECT ENGINEER: BRIAN LEWIS
PROJECT MANAGER: MINDY JANSEN

CONTRACT NO. 74970

STATE OF ILLINOIS
DEPARTMENT OF TRANSPORTATION

SUBMITTED JANUARY 20 20
Jeffrey P. Myrals
REGIONAL ENGINEER

March 20 20
EA. ETK
ENGINEER OF DESIGN AND ENVIRONMENT

March 20 20
James A. Orr
DIRECTOR OF HIGHWAYS PROJECT IMPLEMENTATION

PRINTED BY THE AUTHORITY
OF THE STATE OF ILLINOIS

GENERAL NOTES

THIS PROJECT IS LOCATED JUST SOUTH OF HORD APPROXIMATELY 450 FEET NORTH OF COUNTY ROAD 1865 NORTH TO BIBLE GROVE ROAD OR COUNTY ROAD 1800 NORTH. THE WORK INCLUDES INSTALLATION OF NEW 4' HMA SHOULDERS, EXCAVATING AND GRADING EXISTING SHOULDERS, RUMBLE STRIPS AND PAVEMENT MARKINGS AS SHOWN ON THE PLANS.

THE REMOVAL OF THE EXCAVATED MATERIAL SHALL BE INCLUDED IN THE CONTRACT UNIT PRICE PER UNIT FOR EXCAVATING AND GRADING EXISTING SHOULDER. THE EXCAVATED MATERIAL SHALL BE DEPOSITED ON THE SHOULDERS IN SUCH A MANNER THAT IT WILL NOT INTERFERE WITH DRAINAGE OR THE CONSTRUCTION OF THE HMA SHOULDERS UNTIL IT CAN BE BLADED INTO FINAL POSITION. ANY SURPLUS EXCAVATION MATERIAL NOT NEEDED FOR THE SHOULDER RESHAPING SHALL BE HAULED AND STORED AT THE STATE OPERATIONS SITE AT THE SOUTH EAST CORNER OF THE BIBLE GROVE ROAD AND U.S.ROUTE 45 INTERSECTION.

FROM APPROXIMATELY STATION 926+00 TO 926+41, CONTRACTOR MAY ENCOUNTER EXISTING PCC PAVEMENT (9"-6"-9") BELOW PROPOSED HMA SHOULDER AS SHOWN ON THE PROPOSED TYPICAL SECTIONS, SHEET 6. CONTRACTOR SHALL CONSTRUCT HMA SHOULDERS ATOP THE EXISTING PAVEMENT WITHOUT ACHIEVING A DEPTH OF 8". CONTRACTOR WILL STILL BE PAID FOR HOT-MIX ASPHALT SHOULDERS, 8" FOR THIS WORK.

OMIT HOT-MIX ASPHALT SHOULDERS, 8" ON ALL HMA AND PCC SIDEROADS AND ENTRANCES.

OMIT RUMBLE STRIPS ON ALL SIDEROADS, PRIVATE AND COMMERCIAL ENTRANCES AT RADIUS TURNS. OMIT RUMBLE STRIPS AT MAILBOX TURNOUTS 60' BOTH SIDES OF THE MAILBOX OR AS DETERMINED BY THE ENGINEER. RUMBLE STRIPS SHALL NOT BE OMITTED ON FIELD ENTRANCES.

THE TOTAL OF PAINT PAVEMENT MARKING - LINE 4" CONSISTS OF 8164 FEET OF WHITE.

THE FOLLOWING MIXTURE REQUIREMENTS ARE APPLICABLE FOR THIS PROJECT:

MIXTURE USE: HMA SHOULDERS, 8" (BOTTOM 6" LIFT)
 APPLICATION: HOT-MIX ASPHALT SHOULDERS
 PG GRADE: PG 64-22
 DESIGN AIR VOIDS: 4.0% @ N=70
 MIXTURE COMPOSITION: IL -19.0
 FRICTION AGGREGATE: N/A
 QUALITY MANAGEMENT: QC/QA

MIXTURE USE: HMA SHOULDERS, 8" (TOP 2" LIFT)
 APPLICATION: HOT-MIX ASPHALT SHOULDERS
 PG GRADE: PG 64-22
 DESIGN AIR VOIDS: 4.0% @ N=70
 MIXTURE COMPOSITION: IL -9.5
 FRICTION AGGREGATE: MIXTURE C
 QUALITY MANAGEMENT: QC/QA

INDEX OF SHEETS

SHEET NO.	ITEM
1	COVER SHEET
2	INDEX OF SHEETS, HIGHWAY STANDARDS & GENERAL NOTES
3	SUMMARY OF QUANTITIES
4	SCHEDULE OF QUANTITIES
5	TYPICAL SECTIONS
6-7	PLAN SHEETS
8	TYPICAL APPLICATION OF PAVEMENT MARKINGS

THE FOLLOWING STANDARDS ARE A PART OF THESE PLANS AND ARE INCLUDED FOLLOWING THE LAST NUMBERED SHEET OF THE PLANS.

STD. NO.	DESCRIPTION
642006	SHOULDER RUMBLE STRIPS, 8 IN.
701006-05	OFF-ROAD OPERATIONS, 2L, 2W, 15' TO 24" FROM PAVEMENT EDGE
701011-04	OFF-ROAD MOVING OPERATIONS, 2L, 2W, DAY ONLY
701311-03	LANE CLOSURE 2L, 2W, MOVING OPERATIONS - DAY ONLY
701326-04	LANE CLOSURE, 2L, 2W, PAVEMENT WIDENING, FOR SPEEDS >= 45 MPH
701901-08	TRAFFIC CONTROL DEVICES

MODEL: Default
 FILE: h:\m\c\p\pub\h\room\dat\illinois\gov\PIWDOT\Documents\IDOT_Offices\IDOT\7\Projects\74970\CAAD\Drawings\74970-51c-genote.dgn

•D7 SHOULDER REPAIRS 2020-1

USER NAME = steffemk PLOT SCALE = 100.0000' / in. PLOT DATE = 1/22/2020	DESIGNED -	REVISED -	STATE OF ILLINOIS DEPARTMENT OF TRANSPORTATION	INDEX OF SHEETS, HIGHWAY STANDARDS, AND GENERAL NOTES	F.A.P. RTE.	SECTION	COUNTY	TOTAL SHEETS	SHEET NO.
	DRAWN -	REVISED -			328	*	CLAY	8	2
	CHECKED -	REVISED -			CONTRACT NO. 74970				
	DATE -	REVISED -			SCALE: NA	SHEET	OF	SHEETS	STA.
					ILLINOIS FED. AID PROJECT				

100%
STATE

SUMMARY OF QUANTITIES			TOTAL QUANTITIES	CONSTRUCTION TYPE CODE		
CODE NO	ITEM	UNIT		0021		
20200600	EXCAVATING AND GRADING EXISTING SHOULDER	UNIT	82	82		
48203029	HOT-MIX ASPHALT SHOULDERS, 8"	SO YD	3628	3628		
64200108	SHOULDER RUMBLE STRIPS, 8 INCH	FOOT	8133	8133		
67100100	MOBILIZATION	L SUM	1	1		
70100500	TRAFFIC CONTROL AND PROTECTION, STANDARD	L SUM	1	1		
	701326					
70107025	CHANGEABLE MESSAGE SIGN	CAL DA	28	28		
*	78001110 PAINT PAVEMENT MARKING - LINE 4"	FOOT	8164	8164		

* SPECIALTY ITEM

MODEL: Default
FILE: M:\GIS_Plan\planroom\data\illinois\pwr\RIDOT\Documents\RIDOT_Offices\RIDOT_7\Projects\74970\CADD\BataCAD\shtrns\74970-shr-SS06.dgn

•D7 SHOULDER REPAIRS 2020-1

	USER NAME = steffemk	DESIGNED -	REVISED -	STATE OF ILLINOIS DEPARTMENT OF TRANSPORTATION		SUMMARY OF QUANTITIES			F.A.P. RTE.	SECTION	COUNTY	TOTAL SHEETS	SHEET NO.
	PLOT SCALE = 100.0000' / in.	DRAWN -	REVISED -						328	*	CLAY	8	3
	PLOT DATE = 1/22/2020	CHECKED -	REVISED -						CONTRACT NO. 74970				
		DATE -	REVISED -						SCALE: NA			SHEET OF SHEETS	STA.

20200600 EXCAVATING AND GRADING EXISTING SHOULDER	48203029 HOT-MIX ASPHALT SHOULDERS, 8"	64200108 SHOULDER RUMBLE STRIPS, 8 INCH	78001110 PAINT PAVEMENT MARKING - LINE 4"
---	--	---	---

DESCRIPTION	STATION	TO	STATION	SIDE	LENGTH (FT)	UNIT	SQ YD	FOOT	FOOT
TOTAL LENGTH	926+00.00		968+00.00	LT	4200	42.0	1866.67	4200	4200
TOTAL LENGTH	926+00.00		968+00.00	RT	4200	42.0	1866.67	4200	4200
*PRA OMISSION	928+61.00		929+23.00	LT	62	(0.62)	(27.56)	(62)	(62)
*PE OMISSION	958+49.00		958+80.00	LT	31			(31)	
*PRA OMISSION	965+39.00		966+57.00	LT	118	(1.18)	(52.44)	(118)	(118)
*PRA OMISSION	965+40.00		965+96.00	RT	56	(0.56)	(24.89)	(56)	(56)
TOTALS =						82	3628	8133	8164

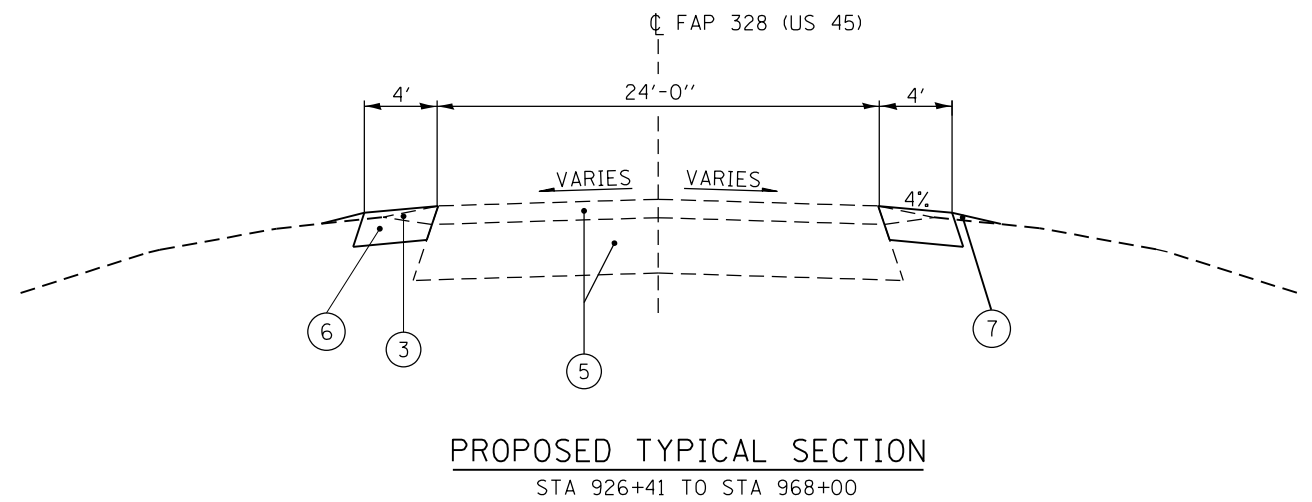
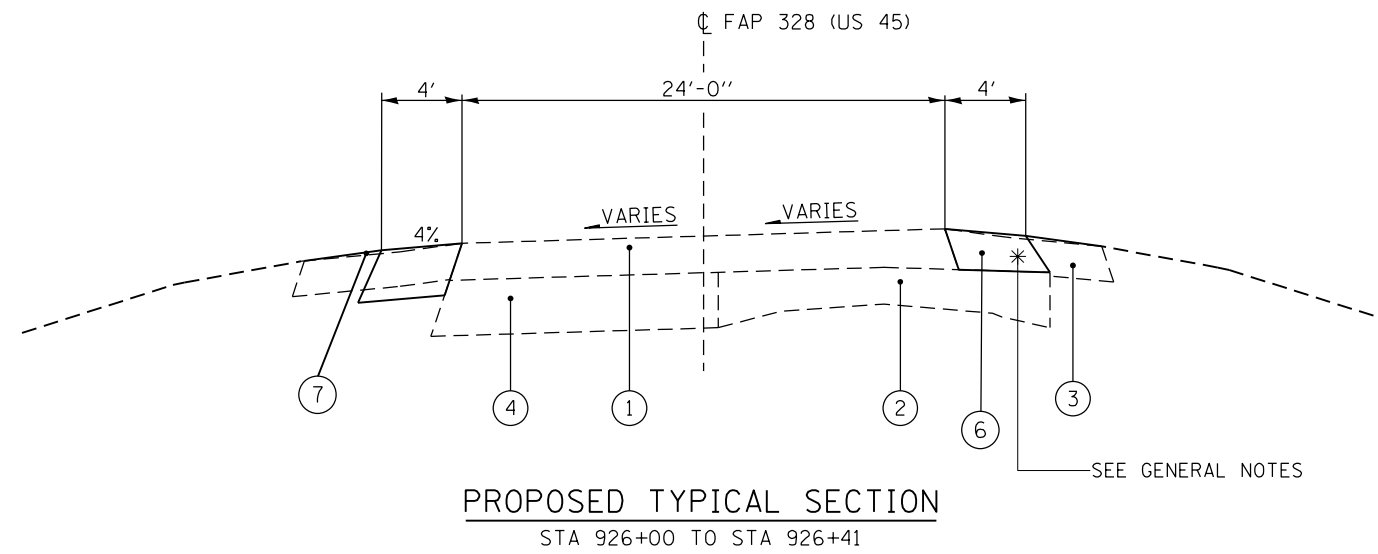
*THESE ITEMS ARE OMISSIONS AND ARE SUBTRACTED FROM TOTALS AS SHOWN.
 THE PRIVATE ENTRANCE (PE) IS A ROCK ENTRANCE SO IS ONLY BEING OMITTED FROM THE SHOULDER RUMBLE STRIPS.

MODEL: Default
 FILE: \\blm1c01.pw.state.il.us\pub\lansom.d\at\illinois.gov\PWIDOT\Documents\DOT_Offices\District_7\Projects\74970\CAAD\Drawings\DOT_74970-ShoulderSchedule.dgn

•D7 SHOULDER REPAIRS 2020-1

USER NAME = steffemk	DESIGNED -	REVISED -	STATE OF ILLINOIS DEPARTMENT OF TRANSPORTATION	SCHEDULE OF QUANTITIES				F.A.P. RTE.	SECTION	COUNTY	TOTAL SHEETS	SHEET NO.
PLOT SCALE = 100.0000' / in.	DRAWN -	REVISED -						328	*	CLAY	8	4
PLOT DATE = 1/22/2020	CHECKED -	REVISED -		SCALE: NA SHEET OF SHEETS STA. TO STA.				CONTRACT NO. 74970				
DATE -	REVISED -	REVISED -						ILLINOIS FED. AID PROJECT				

PROPOSED TYPICAL SECTIONS



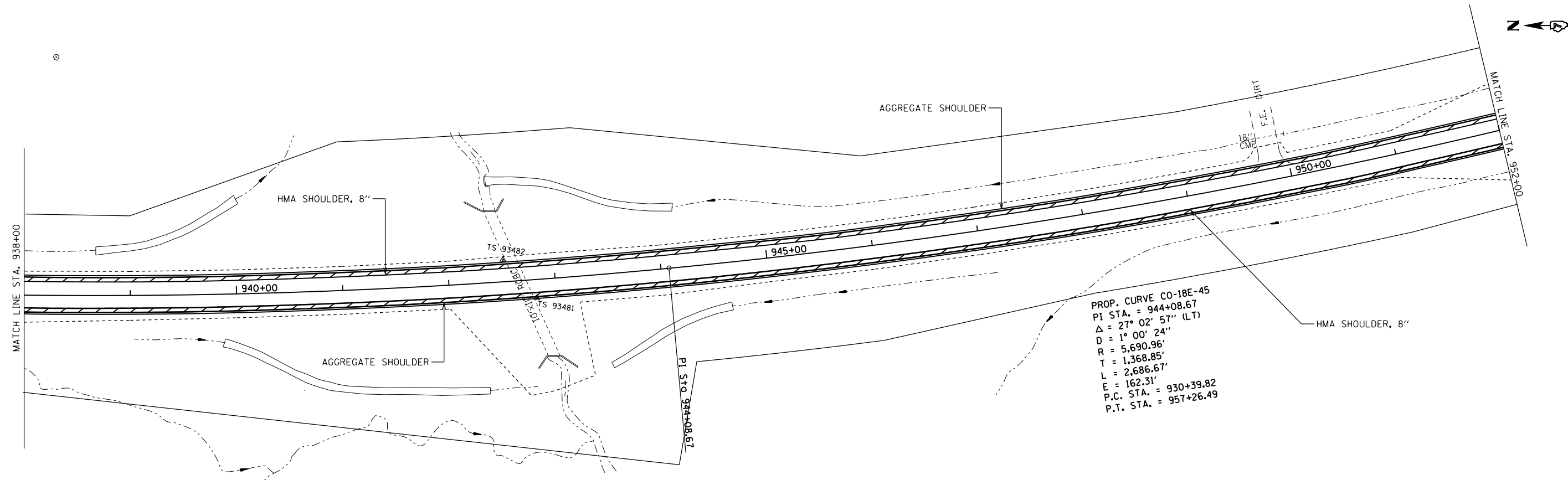
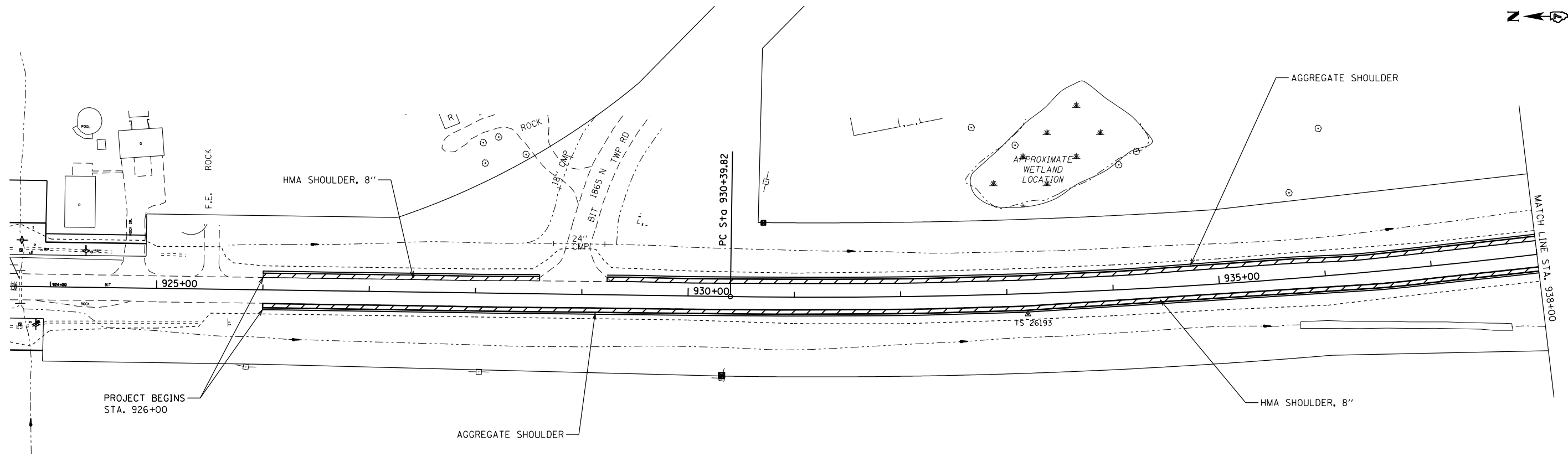
LEGEND

- ① EXISTING BITUMINOUS SURFACE, 3" MIN.
- ② EXISTING PCC PAVEMENT (9"-6"-9")
- ③ EXISTING AGGREGATE SHOULDER
- ④ EXISTING BASE COURSE WIDENING, 9" MIN.
- ⑤ EXISTING FULL DEPTH BITUMINOUS, 12"
- ⑥ PROPOSED HMA SHOULDER, 8"
- ⑦ EXCAVATING AND GRADING EXISTING SHOULDER

MODEL: Default
 FILE: Model: Proj\pub\room.dwg
 PROJECT: 74970\CAAD\Drawings\DOT - Offices\Drawings\74970-Std\Typical.dgn

•07 SHOULDER REPAIRS 2020-1

USER NAME = steffemk PLOT SCALE = 10.0000 "/in. PLOT DATE = 1/22/2020	DESIGNED - DRAWN - CHECKED - DATE -	REVISED - REVISED - REVISED - REVISED -	STATE OF ILLINOIS DEPARTMENT OF TRANSPORTATION	TYPICAL SECTIONS	SCALE: NA	SHEET OF SHEETS	STA. TO STA.	F.A.P. RTE. 328 SECTION * COUNTY CLAY TOTAL SHEETS 8 SHEET NO. 5 CONTRACT NO. 74970	ILLINOIS FED. AID PROJECT
---	--	--	---	-------------------------	-----------	-----------------	--------------	--	---------------------------



MODEL: Default
 FILE: h:\m\c\p\suplanroom.dwg
 PROJECT: 74970\CADD\Drawings\DOT - Offices\Drawings\74970\CADD\Drawings\DOT - Offices\Drawings\74970\Sheet\plan.dwg

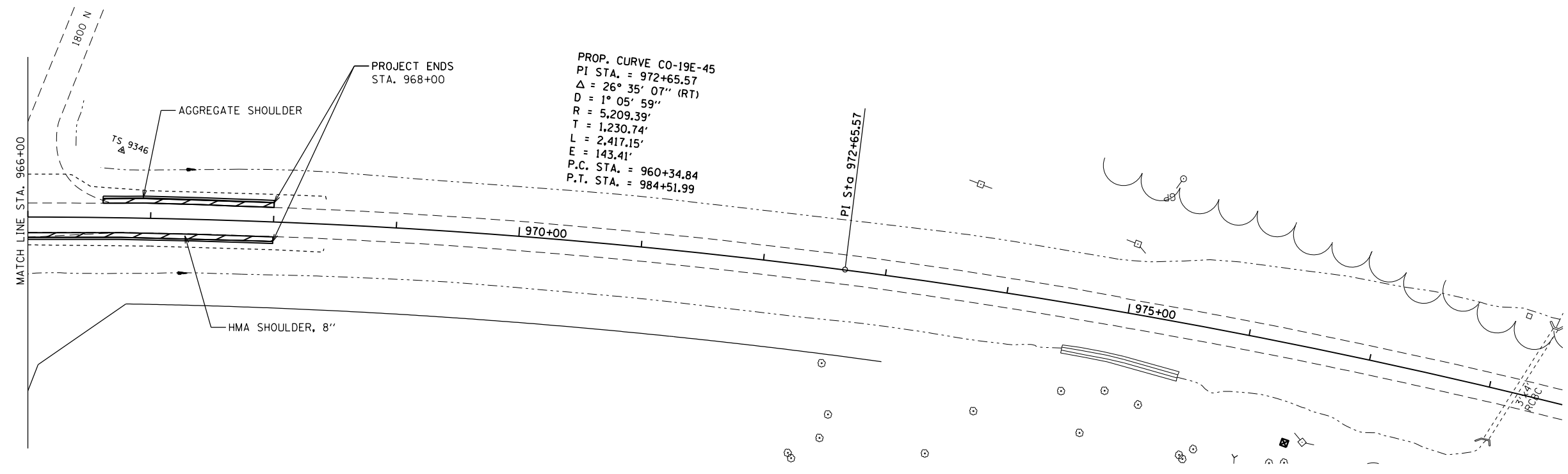
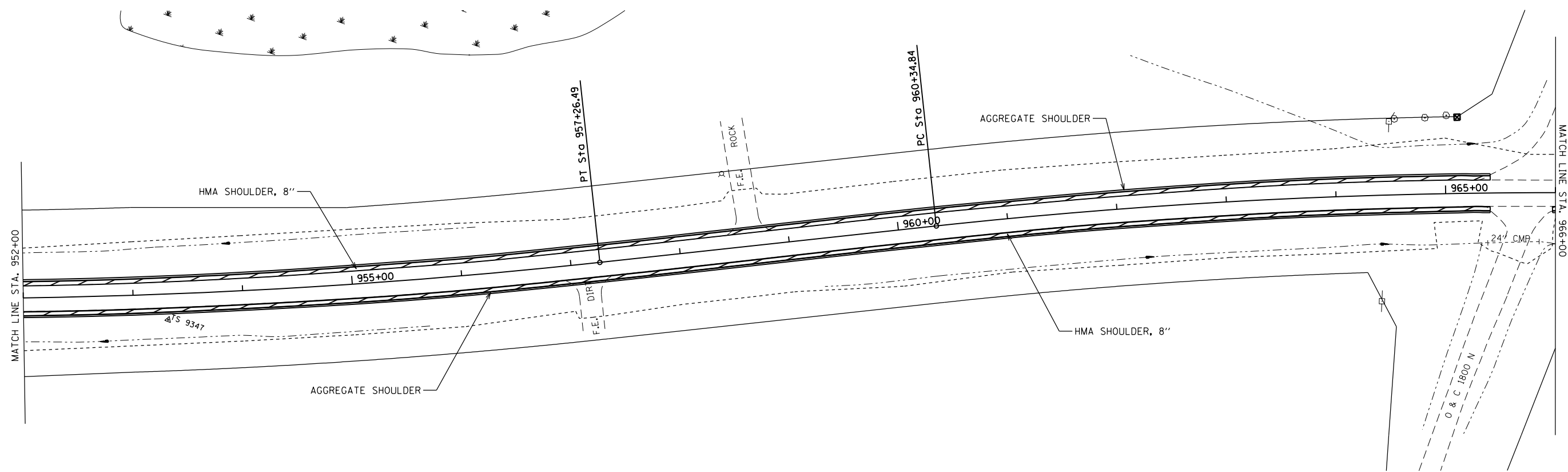
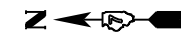
•D7 SHOULDER REPAIRS 2020-1

USER NAME = steffenmk	DESIGNED -	REVISED -
PLOT SCALE = 100,0000' / in.	DRAWN -	REVISED -
PLOT DATE = 1/22/2020	CHECKED -	REVISED -
	DATE -	REVISED -

**STATE OF ILLINOIS
DEPARTMENT OF TRANSPORTATION**

SCALE: NA		SHEET OF SHEETS		STA.	TO STA.
		328	*		

F.A.P. RTE.	SECTION	COUNTY	TOTAL SHEETS	SHEET NO.
328	*	CLAY	8	6
CONTRACT NO. 74970				
ILLINOIS FED. AID PROJECT				



PROP. CURVE CO-19E-45
 PI STA. = 972+65.57
 Δ = 26° 35' 07" (RT)
 D = 1° 05' 59"
 R = 5,209.39'
 T = 1,230.74'
 L = 2,417.15'
 E = 143.41'
 P.C. STA. = 960+34.84
 P.T. STA. = 984+51.99

MODEL: Default
 FILE: h:\m\c\p\pub\baronm.dwg
 PROJECT: 74970\CAADDATA\CADD\sheet\0774970-shd-plan.dwg

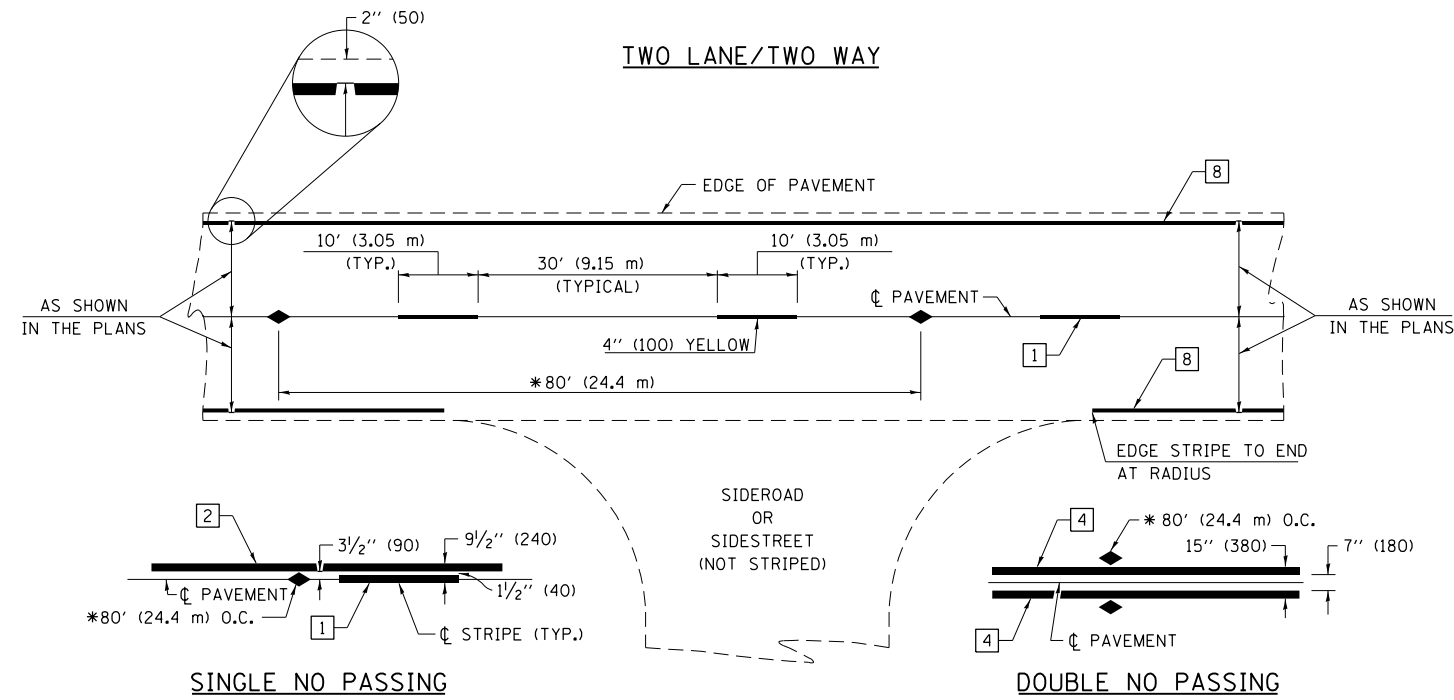
•D7 SHOULDER REPAIRS 2020-1

USER NAME = steffemk	DESIGNED -	REVISED -
PLOT SCALE = 100.0000' / in.	DRAWN -	REVISED -
PLOT DATE = 1/22/2020	CHECKED -	REVISED -
	DATE -	REVISED -

**STATE OF ILLINOIS
 DEPARTMENT OF TRANSPORTATION**

PLAN SHEETS	
SCALE: NA	SHEET OF SHEETS STA. TO STA.

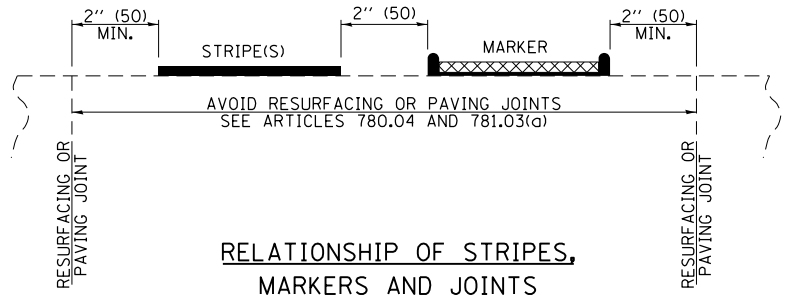
F.A.P. RTE.	SECTION	COUNTY	TOTAL SHEETS	SHEET NO.
328	*	CLAY	8	7
CONTRACT NO. 74970				
ILLINOIS FED. AID PROJECT				



* REDUCE TO 40' (12.2 m) O.C. ON CURVES WITH POSTED OR ADVISORY SPEEDS OF 45 mph (70 km/h) OR LESS.

PAVEMENT MARKING LEGEND

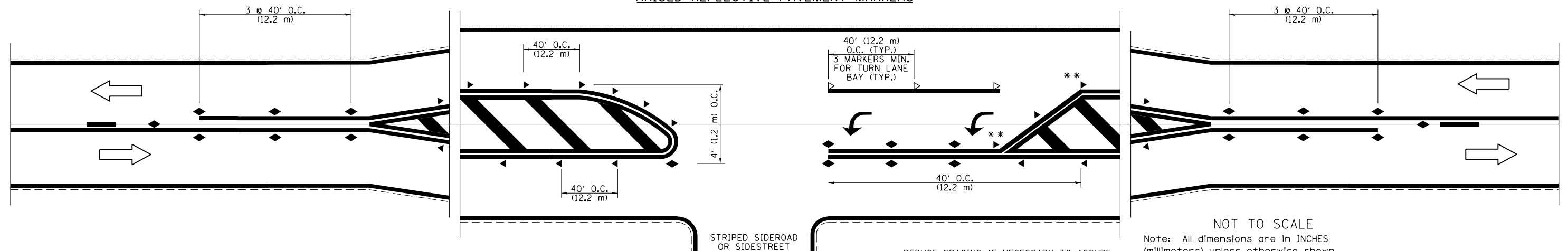
- 1 4" (100) SKIP-DASH (YELLOW)
 - 2 4" (100) SOLID (YELLOW)
 - 3 12" (300) DIAGONAL (YELLOW)
 - 4 4" (100) DOUBLE YELLOW (NARROW)
 - 5 12" (300) SOLID WHITE
 - 6 RESERVED
 - 7 6" (150) SKIP-DASH (WHITE)
 - 8 4" (100) SOLID (WHITE)
 - 9 12" (300) DIAGONAL (WHITE)
 - 10 6" (150) SOLID (WHITE)
 - 11 24" (600) STOP BAR (WHITE)
 - 12 8" (200) SOLID (WHITE)
 - 13 4" (100) PARKING WHITE
-



TYPICAL PAVEMENT MARKERS LEGEND

- ◆ TWO-WAY AMBER MARKER
- ▶ ONE-WAY AMBER MARKER
- ▷ ONE-WAY CRYSTAL MARKER

RAISED REFLECTIVE PAVEMENT MARKERS



NOT TO SCALE
Note: All dimensions are in INCHES (millimeters) unless otherwise shown.

• D7 SHOULDER REPAIRS 2020-1

FILE NAME =	USER NAME = steffenmk	DESIGNED -	REVISED -
pw:\planroom.dot.illinois.gov\PWIDOT\Documents\IDOT Offices\District 7\Projects\74970\DRAWN\CADsheets\0774970-shd-details.dwg		REVISOR -	REVISED -
	PLOT SCALE = 1/200.0000 "/td> <td>CHECKED -</td> <td>REVISED -</td>	CHECKED -	REVISED -
	PLOT DATE = 1/22/2020	DATE -	REVISED -

STATE OF ILLINOIS
DEPARTMENT OF TRANSPORTATION

PAVEMENT MARKING AND RAISED REFLECTIVE PAVEMENT MARKERS
(RURAL & URBAN APPLICATIONS)

SCALE: NA SHEET NO. OF SHEETS STA. TO STA.

DISTRICT 7 DETAIL NO. 78000001				
F.A.P. RTE.	SECTION	COUNTY	TOTAL SHEETS	SHEET NO.
328	.	CLAY	8	8
CONTRACT NO. 74970				
ILLINOIS FED. AID PROJECT				