

FILE NAME = I:\KANECD\13296-02_LongmeadowPkwy\Drawn\CADD_Sheets\SectonC2\st-SumQty-09.ctb.dgn

SUMMARY OF QUANTITIES					CONSTRUCTION CODES					100% LOCAL PUBLIC AGENCY
					PARTICIPATING URBAN & RURAL FUNDING				NON - PART	
SPECIALTY ITEM	CODE NO.	ITEM	UNIT	TOTAL QUANTITY	STU (75%/25%), STR (80%/20%)					
					NEW ROAD 0001	ROAD RECON 0004	NEW BRIDGE 0008	SAFETY 0021	**SAFETY 0021	
•	78009000	MODIFIED URETHANE PAVEMENT MARKING - LETTERS AND SYMBOLS	SO FT	1,154				1,154		
•	78009004	MODIFIED URETHANE PAVEMENT MARKING - LINE 4"	FOOT	19,563				19,563		
•	78009006	MODIFIED URETHANE PAVEMENT MARKING - LINE 6"	FOOT	4,260				4,260		
•	78009008	MODIFIED URETHANE PAVEMENT MARKING - LINE 8"	FOOT	971				971		
•	78009012	MODIFIED URETHANE PAVEMENT MARKING - LINE 12"	FOOT	1,537				1,537		
•	78009024	MODIFIED URETHANE PAVEMENT MARKING - LINE 24"	FOOT	569				569		
•	78100100	RAISED REFLECTIVE PAVEMENT MARKER	EACH	14				14		
•	78200005	GUARDRAIL REFLECTORS, TYPE A	EACH	14				14		
•	80400100	ELECTRIC SERVICE INSTALLATION	EACH	2				2		
•	80400200	ELECTRIC UTILITY SERVICE CONNECTION	L SUM	1				1		
•	81028200	UNDERGROUND CONDUIT, GALVANIZED STEEL, 2" DIA.	FOOT	1,566				1,240	326	
•	81028210	UNDERGROUND CONDUIT, GALVANIZED STEEL, 2 1/2" DIA.	FOOT	95				95		
•	81028220	UNDERGROUND CONDUIT, GALVANIZED STEEL, 3" DIA.	FOOT	396				379	17	
•	81028240	UNDERGROUND CONDUIT, GALVANIZED STEEL, 4" DIA.	FOOT	1,137				1,137		
•	81028340	UNDERGROUND CONDUIT, PVC, 1 1/2" DIA.	FOOT	125				125		
•	81028380	UNDERGROUND CONDUIT, PVC, 3 1/2" DIA.	FOOT	290				290		
•	81028740	UNDERGROUND CONDUIT, COILABLE NONMETALLIC CONDUIT, 1 1/2" DIA.	FOOT	760				760		
•	81028750	UNDERGROUND CONDUIT, COILABLE NONMETALLIC CONDUIT, 2" DIA.	FOOT	210				210		
•	81028770	UNDERGROUND CONDUIT, COILABLE NONMETALLIC CONDUIT, 3" DIA.	FOOT	210				210		

**SAFETY ITEMS SEPARATED FOR IL-25 INTERSECTION

SUMMARY OF QUANTITIES						CONSTRUCTION CODES					100% LOCAL PUBLIC AGENCY	
						PARTICIPATING URBAN & RURAL FUNDING						NON-PART
						STU (75%/25%), STR (80%/20%)						
SPECIALTY ITEM	CODE NO.	ITEM	UNIT	TOTAL QUANTITY	NEW ROAD 0001	ROAD RECON 0004	NEW BRIDGE 0008	SAFETY 0021	**SAFETY 0021			
•	87301225	ELECTRIC CABLE IN CONDUIT, SIGNAL NO. 14 3C	FOOT	2,944				1,326	1,618			
•	87301245	ELECTRIC CABLE IN CONDUIT, SIGNAL NO. 14 5C	FOOT	5,892				3,736	2,156			
•	87301255	ELECTRIC CABLE IN CONDUIT, SIGNAL NO. 14 7C	FOOT	4,445				938	3,507			
•	87301305	ELECTRIC CABLE IN CONDUIT, LEAD-IN, NO. 14 1 PAIR	FOOT	9,720				3,905	5,815			
•	87301805	ELECTRIC CABLE IN CONDUIT, SERVICE, NO. 6 2 C	FOOT	107				30	77			
•	87301815	ELECTRIC CABLE IN CONDUIT, SERVICE, NO. 6 3 C	FOOT	754				754				
•	87301900	ELECTRIC CABLE IN CONDUIT, EQUIPMENT GROUNDING CONDUCTOR, NO. 6 1C	FOOT	3,031				1,488	1,543			
•	87502440	TRAFFIC SIGNAL POST, GALVANIZED STEEL 10 FT.	EACH	2					2			
•	87502500	TRAFFIC SIGNAL POST, GALVANIZED STEEL 16 FT.	EACH	7				4	3			
•	87702197	STEEL COMBINATION MAST ARM ASSEMBLY AND POLE WITH DUAL MAST ARMS, 16 FT. AND 44 FT.	EACH	1					1			
•	87702203	STEEL COMBINATION MAST ARM ASSEMBLY AND POLE WITH DUAL MAST ARMS, 18 FT. AND 46 FT.	EACH	1					1			
•	87702765	STEEL MAST ARM ASSEMBLY AND POLE WITH DUAL MAST ARMS, 58 FT. AND 30 FT.	EACH	1					1			
•	87702289	STEEL MAST ARM ASSEMBLY AND POLE WITH DUAL MAST ARMS, 22 FT. AND 60 FT.	EACH	1					1			
•	87702930	STEEL COMBINATION MAST ARM ASSEMBLY AND POLE 40 FT.	EACH	1				1				
•	87702960	STEEL COMBINATION MAST ARM ASSEMBLY AND POLE 46 FT.	EACH	1					1			
•	87702980	STEEL COMBINATION MAST ARM ASSEMBLY AND POLE 50 FT.	EACH	1				1				
•	87702990	STEEL COMBINATION MAST ARM ASSEMBLY AND POLE 54 FT.	EACH	2				2				
•	87800100	CONCRETE FOUNDATION, TYPE A	FOOT	20				16	4			
•	87800150	CONCRETE FOUNDATION, TYPE C	FOOT	4				4				
•	87800415	CONCRETE FOUNDATION, TYPE E 36-INCH DIAMETER	FOOT	58				58				

**SAFETY ITEMS SEPARATED FOR IL-25 INTERSECTION

FILE NAME = I:\XANECD\13296-02_Longmeadow\Proj\Draw\CADD_Sheets\SectonC2.rvt:SumQty:11.cmt.dgn



USER NAME = Jeff Sedg	DESIGNED - JMS/PFR	REVISED - 4/15/2020
PLOT SCALE = 2.0000' / in.	DRAWN - PFR	REVISED -
PLOT DATE = 4/16/2020	CHECKED - KDF	REVISED -
	DATE - 01/13/2020	REVISED -

STATE OF ILLINOIS
DEPARTMENT OF TRANSPORTATION

SUMMARY OF QUANTITIES		
SCALE: NTS	SHEET 11 OF 20 SHEETS	STA. TO STA.

F.A.U. RTE.	SECTION	COUNTY	TOTAL SHEETS	SHEET NO.
2298	18-00215-21-BR	KANE	415	15
ILLINOIS FED. AID PROJECT			CONTRACT NO. 61G02	

CONSTRUCTION CODES

PARTICIPATING URBAN & RURAL FUNDING

NON-PART

STU (75%/25%), STR (80%/20%)

100% LOCAL PUBLIC AGENCY

SUMMARY OF QUANTITIES

SPECIALTY ITEM	CODE NO.	ITEM	UNIT	TOTAL QUANTITY	CONSTRUCTION CODES					100% LOCAL PUBLIC AGENCY
					NEW ROAD 0001	ROAD RECON 0004	NEW BRIDGE 0008	SAFETY 0021	**SAFETY 0021	
•	87800420	CONCRETE FOUNDATION, TYPE E 42-INCH DIAMETER	FOOT	22					22	
•	88030020	SIGNAL HEAD, LED, 1-FACE, 3-SECTION, MAST-ARM MOUNTED	EACH	19				11	8	
•	88030050	SIGNAL HEAD, LED, 1-FACE, 3-SECTION, BRACKET MOUNTED	EACH	3				2	1	
•	88030070	SIGNAL HEAD, LED, 1-FACE, 4-SECTION, BRACKET MOUNTED	EACH	7				7		
•	88030080	SIGNAL HEAD, LED, 1-FACE, 4-SECTION, MAST ARM MOUNTED	EACH	2				2		
•	88030100	SIGNAL HEAD, LED, 1-FACE, 5-SECTION, BRACKET MOUNTED	EACH	3					3	
•	88030110	SIGNAL HEAD, LED, 1-FACE, 5-SECTION, MAST-ARM MOUNTED	EACH	13					13	
•	88102710	PEDESTRIAN SIGNAL HEAD, LED, 1-FACE, BRACKET MOUNTED	EACH	12				4	8	
•	88200110	TRAFFIC SIGNAL BACKPLATE, LOUVERED	EACH	18					18	
•	88200510	TRAFFIC SIGNAL BACKPLATE, RETROREFLECTIVE	EACH	13				13		
•	88500100	INDUCTIVE LOOP DETECTOR	EACH	28				16	12	
•	88600700	PREFORMED DETECTOR LOOP	FOOT	776				436	340	
•	88700090	CONFIRMATION BEACON	EACH	4						4
•	88700200	LIGHT DETECTOR	EACH	8						8
•	88700300	LIGHT DETECTOR AMPLIFIER	EACH	2						2
•	88800100	PEDESTRIAN PUSH-BUTTON	EACH	11				3	8	
	542A0229	PIPE CULVERTS, CLASS A, TYPE 1 24"	FOOT	181	181					
	542A5491	PIPE CULVERTS, CLASS A, TYPE 1 EQUIVALENT ROUND-SIZE 36"	FOOT	118	118					
	542JC036	PIPE CULVERTS, CLASS C 36" (JACKED)	FOOT	47		47				
	550A0340	STORM SEWERS, CLASS A, TYPE 2 12"	FOOT	4,267	3,533	734				

**SAFETY ITEMS SEPARATED FOR IL-25 INTERSECTION

FILE NAME = I:\XANECD\13296-02_LongmeadowPkwy\Draw\CADD_Sheets\SectonC2-shr-SumQty-12.cnt-001.dgn



USER NAME = Ed Davis	DESIGNED - JMS/PFR	REVISED - 1/1 4/15/2020
PLOT SCALE = 2.0000' / in.	DRAWN - PFR	REVISED -
PLOT DATE = 4/15/2020	CHECKED - KDF	REVISED -
	DATE - 01/13/2020	REVISED -

STATE OF ILLINOIS
DEPARTMENT OF TRANSPORTATION

SUMMARY OF QUANTITIES

SCALE: NTS SHEET 12 OF 20 SHEETS STA. TO STA.

F.A.U. RTE.	SECTION	COUNTY	TOTAL SHEETS	SHEET NO.
2298	18-00215-21-BR	KANE	415	16
ILLINOIS FED. AID PROJECT			CONTRACT NO. 61G02	

SUMMARY OF QUANTITIES					CONSTRUCTION CODES					100% LOCAL PUBLIC AGENCY
					PARTICIPATING URBAN & RURAL FUNDING				NON-PART	
					STU (75%/25%), STR (80%/20%)					
SPECIALTY ITEM	CODE NO.	ITEM	UNIT	TOTAL QUANTITY	NEW ROAD 0001	ROAD RECON 0004	NEW BRIDGE 0008	SAFETY 0021	**SAFETY 0021	
	X0324044	EROSION CONTROL, TEMPORARY PIPE SLOPE DRAIN	EACH	6	6					
•	X0324085	EMERGENCY VEHICLE PRIORITY SYSTEM LINE SENSOR CABLE, NO. 20 3/C	FOOT	817						817
•	X0325476	RADAR VEHICLE DETECTION SYSTEM	EACH	2				1	1	
	X0326447	FORCEMAIN CLEANOUT VAULT	EACH	1		1				
	X0326749	AIR RELEASE VALVE MANHOLE	EACH	1		1				
•	X0326810	WIRELESS COMMUNICATION DEVICE	EACH	2				2		
	X0327036	BIKE PATH REMOVAL	SQ YD	170		170				
	X0327078	REMOVE FIRE HYDRANT AND VALVE ASSEMBLY	EACH	4						4
	X0327369	SANITARY SEWER, DUCTILE IRON, 10"	FOOT	149						149
	X0327583	STAMPED COLORED PORTLAND CEMENT CONCRETE PAVEMENT 10" (JOINTED)	SQ YD	334	334					
•	X0327979	PAVEMENT MARKING REMOVAL - GRINDING	SQ FT	1,227				1,227		
	X0327999	ANTI-GRAFFITI COATING	SQ FT	7,974						7,974
	X1200068	FORCE MAIN BYPASS PUMPING	L SUM	1						1
•	X1400101	NETWORK CONFIGURATION	L SUM	1				1		
△	X1400081	FULL-ACTUATED CONTROLLER AND TYPE SUPER P CABINET (SPECIAL)	EACH	1					1	
•	X1400107	FULL-ACTUATED CONTROLLER AND TYPE SUPER P CABINET	EACH	1					1	
•	X1400150	SERVICE INSTALLATION, GROUND MOUNTED, METERED	EACH	2				1	1	
•	X1400238	LUMINAIRE, LED, SPECIAL	EACH	9				9		
	X1700034	FORM LINER TEXTURED SURFACE, SPECIAL	SQ FT	60			60			
	X1700045	REMOVE TEMPORARY CONCRETE BARRIER NO SALVAGE	FOOT	380				380		

**SAFETY ITEMS SEPARATED FOR IL-25 INTERSECTION

FILE NAME = I:\XANECD\13296-02_LongmeadowPkwy\Drawn\CADD_Sheets\Structure2-shr-SumQty-16.ctb.dgn



USER NAME = Jeff Sedg	DESIGNED - JMS/PFR	REVISED - 1/15/2020
PLOT SCALE = 2.0000' / in.	DRAWN - PFR	REVISED -
PLOT DATE = 4/16/2020	CHECKED - KDF	REVISED -
	DATE - 01/13/2020	REVISED -

STATE OF ILLINOIS
DEPARTMENT OF TRANSPORTATION

SUMMARY OF QUANTITIES	
SCALE: NTS	SHEET 16 OF 20 SHEETS STA. TO STA.

F.A.U. RTE. 2298	SECTION 18-00215-21-BR	COUNTY KANE	TOTAL SHEETS 415	SHEET NO. 20
ILLINOIS FED. AID PROJECT			CONTRACT NO. 61G02	

FILE NAME = I:\XANED\13296-02_Longmeadow\Plan\Draw\CADD_Sheets\SectonC2\st-SumQty19.cnt.001.dgn

SUMMARY OF QUANTITIES					CONSTRUCTION CODES					100% LOCAL PUBLIC AGENCY
					PARTICIPATING URBAN & RURAL FUNDING				NON - PART	
					STU (75%/25%) , STR (80%/20%)					
SPECIALTY ITEM	CODE NO.	ITEM	UNIT	TOTAL QUANTITY	NEW ROAD 0001	ROAD RECON 0004	NEW BRIDGE 0008	SAFETY 0021	**SAFETY 0021	
	XX006238	STORM SEWER DUCTILE IRON 15"	FOOT	41	41					
•	XX007251	INTERSECTION VIDEO TRAFFIC MONITORING SYSTEM WITH PTZ CAMERA	EACH	1				1		
•	XX008392	OUTDOOR RATED NETWORK CABLE	FOOT	357				357		
•	XX008453	ETHERNET SWITCH, TYPE 1	EACH	1				1		
•	XX008454	ETHERNET SWITCH, TYPE 2	EACH	1				1		
	XX008829	REMOVAL AND DISPOSAL OF EXISTING FORCE MAIN	FOOT	260						260
•	XX008865	PERMEABLE PLASTIC BERM	FOOT	3,350	3,003	347				
•	XX008963	THREE CELL FABRIC INNERDUCT	FOOT	4,329				4,329		
•	XX009297	LUMINAIRE, LED, HORIZONTAL MOUNT, SPECIAL	EACH	4				4		
	Z0012193	BRIDGE DECK THIN POLYMER OVERLAY 3/8"	SQ YD	800			800			
	Z0013796	SEDIMENT CONTROL, STABILIZED CONSTRUCTION ENTRANCE	SQ YD	667		667				
	Z0013798	CONSTRUCTION LAYOUT	L SUM	1	1					
	Z0018000	DRAINAGE SCUPPERS (SPECIAL)	EACH	2			2			
	Z0018004	DRAINAGE SCUPPERS, DS-12	EACH	8			8			
	Z0018800	DRAINAGE SYSTEM	L SUM	1			1			
	Z0019600	DUST CONTROL WATERING	UNIT	825	625	200				
•	Z0023202	SEDIMENT CONTROL, DRAINAGE STRUCTURE INLET FILTER CLEANING	EACH	180	158	22				
•	Z0030850	TEMPORARY INFORMATION SIGNING	SQ FT	115				115		
⚠	Z0033040	ELECTRIC SERVICE DISCONNECT, LIGHTING AND TRAFFIC SIGNAL	EACH	1					1	

**SAFETY ITEMS SEPARATED FOR IL-25 INTERSECTION



USER NAME = Jeff Sedg	DESIGNED - JMS/PFR	REVISED - 4/15/2020
PLOT SCALE = 2.0000' / in.	DRAWN - PFR	REVISIONS -
PLOT DATE = 4/16/2020	CHECKED - KDF	REVISIONS -
	DATE - 01/13/2020	REVISIONS -

STATE OF ILLINOIS
DEPARTMENT OF TRANSPORTATION

SUMMARY OF QUANTITIES	
SCALE: NTS	SHEET 19 OF 20 SHEETS STA. TO STA.

F.A.U. RTE.	SECTION	COUNTY	TOTAL SHEETS	SHEET NO.
2298	18-00215-21-BR	KANE	415	23
ILLINOIS FED. AID PROJECT			CONTRACT NO. 61G02	

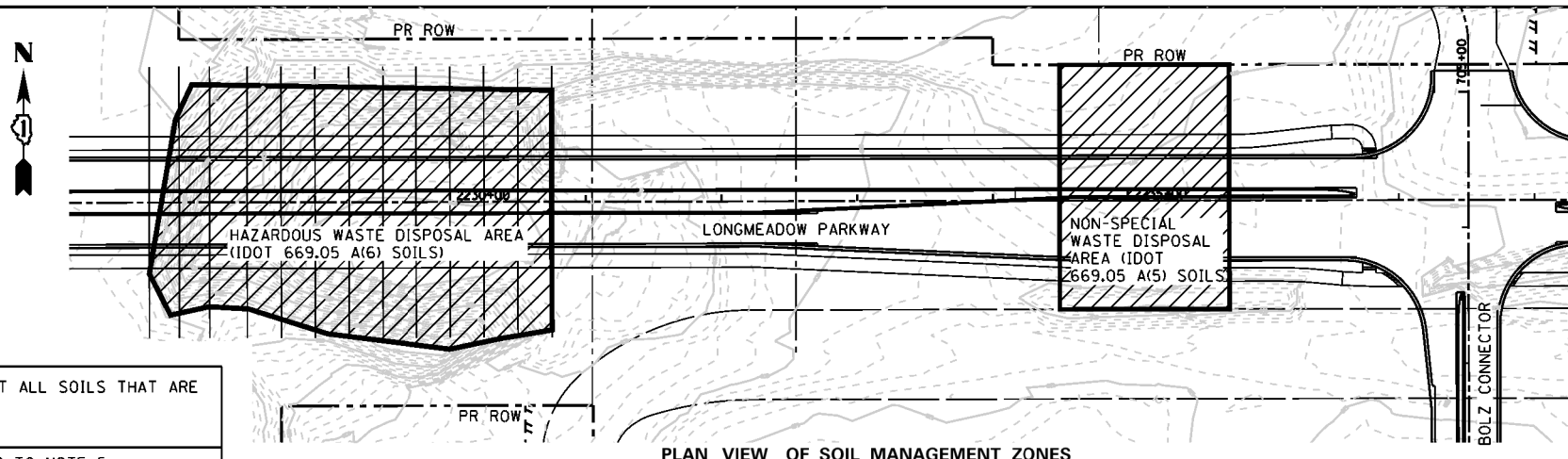
EARTHWORK NOTES:

1. THIS PROJECT HAS A LARGE NET EXCESS OF EXCAVATED MATERIALS. THE CONTRACTOR SHALL BE PAID FOR THE HANDLING OF EARTHWORK ONLY ONCE, REGARDLESS OF STAGING OPERATIONS. THE CONTRACTOR SHALL BE RESPONSIBLE FOR HIS EARTHWORK OPERATIONS INCLUDING EXCAVATING AND STOCKPILING OF EXCAVATED MATERIALS FOR RE-HANDLING AT A LATER DATE (IF NECESSARY). THIS APPLIES TO ALL EXCAVATED MATERIALS TO BE USED ON SITE OR SURPLUS MATERIAL REMOVED FROM THE SITE.
2. A 15% SHRINKAGE FACTOR HAS BEEN APPLIED FOR EARTH EXCAVATION AND TOPSOIL EXCAVATION AND PLACEMENT.
3. AN ENVIRONMENTAL INVESTIGATION HAS BEEN CONDUCTED TO TEST FOR CLEAN CONSTRUCTION AND DEMOLITION DEBRIS (CCDD) COMPATIBILITY. THE INVESTIGATION CONCLUDED THAT ALL SOILS WITHIN THE PROJECT (WITH THE EXCEPTION OF MATERIALS WITHIN THE SOIL MANAGEMENT ZONES - SEE MORE INFORMATION ON THIS SHEET) LIKELY MEETS THE PH REQUIREMENTS AS ENFORCED BY THE ILLINOIS ENVIRONMENTAL PROTECTION AGENCIES AND CCDD RECEIVING FACILITIES.
4. THE EARTHWORK CALCULATIONS INCLUDE AREA MEASUREMENTS PER CROSS SECTION. EACH MEASUREMENT IS CATEGORIZED BY AN ABBREVIATION IN PARENTHESIS STARTING WITH "C" FOR A CUT MEASUREMENT AND "F" FOR A FILL MEASUREMENT. EACH IS DESCRIBED BELOW:

SUITABLE MATERIAL EXCAVATION VOLUME (C1)	ALL EXCAVATION SUITABLE FOR USE AS ROADWAY EMBANKMENT. A GEOTECHNICAL STUDY INDICATES THAT ALL SOILS THAT ARE NEITHER TOPSOIL, NOR WITHIN UNDERCUT LIMITS ARE ANTICIPATED TO BE SUITABLE.
UNSUITABLE MATERIAL EXCAVATION VOLUME (C2)	EXCAVATION WITHIN UNDERCUT LIMITS. FOR INFORMATION ON THE FILL WITHIN UNDERCUT LIMITS, REFER TO NOTE 5.
ROADWAY EMBANKMENT VOLUME (F1)	EMBANKMENT SUITABLE FOR SUPPORTING THE ROADWAY AND MULTI-USE PATH.
ROADSIDE EMBANKMENT VOLUME (F2)	EMBANKMENT LIMITED TO AREAS NOT APPLICABLE TO ROADWAY EMBANKMENT. ROADSIDE EMBANKMENT MUST NOT BE USED FOR SUPPORTING THE ROADWAY OR MULTI-USE PATH.
ROCK FILL - FOUNDATION VOLUME (F4)	USED BENEATH MECHANICALLY STABILIZED EARTH RETAINING WALLS IN AREAS SPECIFIED IN THE PLANS.

5. EARTHWORK PAY ITEM QUANTITIES ARE DERIVED FROM THE MEASUREMENTS DESCRIBED IN NOTE 4 AND SHOWN IN THE SCHEDULE OF EARTHWORK.

EARTH EXCAVATION	INCLUDES ALL MATERIAL THAT IS EXCAVATED FROM ONSITE AND USED ONSITE AS ROADWAY EMBANKMENT OR ROADSIDE EMBANKMENT. EARTH EXCAVATION SHALL BE IN ACCORDANCE WITH SECTION 202 OF THE I.D.O.T. STANDARD SPECIFICATIONS.
FURNISHED EXCAVATION	NOT REQUIRED FOR THIS CONTRACT AS SUFFICIENT QUANTITY OF FILL CAN BE FOUND ONSITE.
REMOVAL AND DISPOSAL OF UNSUITABLE MATERIAL	INCLUDES ALL SURPLUS MATERIAL THAT IS EXCAVATED FROM ONSITE AND IS NOT USED AS ONSITE FILL. THIS MATERIAL SHALL BE REMOVED AND DISPOSED OF OFF-SITE IN ACCORDANCE WITH SECTION 202 OF THE I.D.O.T. STANDARD SPECIFICATIONS. THE PLAN QUANTITY IS CALCULATED UNDER THE ASSUMPTION THAT SURPLUS EXCAVATED MATERIAL SHALL BE HANDLED ONE TIME BY THE CONTRACTOR.
AGGREGATE SUBGRADE IMPROVEMENT	APPLICABLE TO UNDERCUT LOCATIONS, EITHER AS SHOWN ON THE CROSS SECTIONS OR AS IDENTIFIED IN THE FIELD. UNDERCUT REPRESENTS LOCATIONS WHERE THE SOILS BELOW THE PROPOSED ROADWAY ARE UNSUITABLE TO SUPPORT THE ROADWAY. UNSUITABLE MATERIALS SHALL BE REMOVED UNTIL SUITABLE MATERIALS ARE ENCOUNTERED. EARTH EXCAVATION (ROADWAY EMBANKMENT) MAY BE SUBSTITUTED AS FILL WITHIN UNDERCUT AREAS WHERE APPROVED BY THE ENGINEER. THE RESIDENT ENGINEER SHALL APPROVE THE UNDERCUT AREAS AND DEPTH TO REMEDY THE UNSUITABLE MATERIALS.
TOPSOIL FURNISH AND PLACE	ALL TOPSOIL FOR THIS PROJECT SHALL BE FURNISHED AND PLACED AT THE DEPTHS INDICATED IN THE PLANS.



PLAN VIEW OF SOIL MANAGEMENT ZONES

HAZARDOUS WASTE DISPOSAL AREA - IDOT 669.05 A(6) SOILS												
LONGMEADOW STATION	OFFSET 1		OFFSET 2		OFFSET 3		OFFSET 4		OFFSET 5		OFFSET 6	
	OFFSET	BOTTOM ELEV.	OFFSET	BOTTOM ELEV.	OFFSET	BOTTOM ELEV.	OFFSET	BOTTOM ELEV.	OFFSET	BOTTOM ELEV.	OFFSET	BOTTOM ELEV.
2227+77.98	52.44' RT	813.47										
2228+00.00	66.73' LT	807.92	31.43' LT	808.00	37.26' RT	810.00	65.93' RT	811.00	81.50' RT	815.21		
2228+22.39	85.58' LT	807.97	50.00' LT	807.90	1.87' LT	808.00	42.11' RT	811.00	70.56' RT	814.00	76.80' RT	814.00
2228+50.00	86.09' LT	808.00	37.52' RT	808.00	78.43' RT	814.87						
2228+75.00	85.65' LT	808.00	51.80' RT	808.00	80.25' RT	810.00	86.12' RT	811.97				
2229+00.00	85.21' LT	808.00	54.62' RT	808.00	75.38' RT	809.00	94.04' RT	810.00				
2229+25.00	84.77' LT	808.00	51.97' RT	808.00	98.92' RT	810.00						
2229+50.00	84.33' LT	808.00	48.62' LT	808.00	29.36' RT	809.00	95.23' RT	809.00	102.11' RT	812.69		
2229+75.00	83.89' LT	808.00	54.45' LT	808.00	27.91' RT	809.00	80.75' RT	809.00	96.63' RT	810.00	105.30' RT	814.34
2230+00.00	83.45' LT	807.14	34.36' LT	808.00	7.25' RT	809.00	21.67' RT	810.00	57.53' RT	816.50	96.93' RT	816.50
2230+25.00	83.01' LT	808.00	75.47' LT	808.00	50.01' LT	812.50	103.14' RT	812.50				
2230+50.00	82.57' LT	814.36	22.97' LT	820.00	24.13' RT	826.00	66.42' RT	825.00	98.50' RT	830.10		
2230+75.00	82.14' LT	825.60	46.83' LT	828.74	11.52' LT	837.23	23.78' RT	839.76	59.09' RT	839.31	94.39' LT	838.43

NOTE: ALL SOIL WITHIN THE HORIZONTAL LIMITS AND ABOVE THE BOTTOM SURFACE ELEVATION LISTED IN THE TABLE SHALL BE PROCESSED AS HAZARDOUS WASTE DISPOSAL, AND IT IS QUANTIFIED AS SUCH. TOTAL PLAN QUANTITY WITHIN THIS LIMIT IS 38,695 CU YD. THIS VOLUME IS ALSO QUANTIFIED IN THIS CONTRACT AS EARTH EXCAVATION.

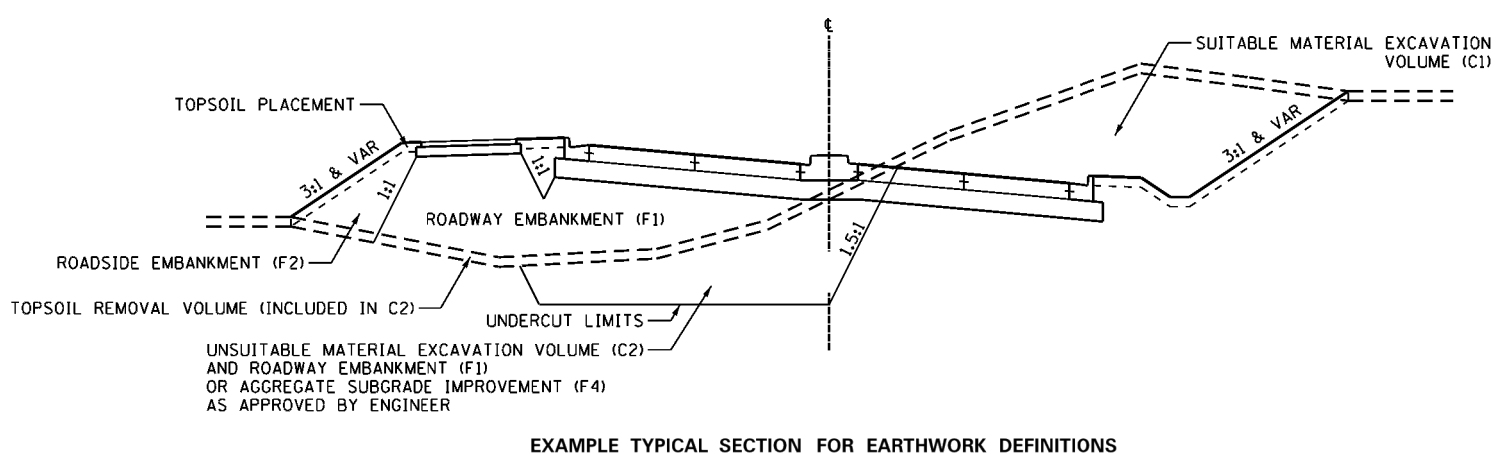
HAZARDOUS WASTE DISPOSAL AREA (IDOT 669.05 A(6) SOILS) - NOTES

1. A SIGNIFICANT NUMBER OF SAMPLES HAVE BEEN COLLECTED FROM WITHIN THE HAZARDOUS WASTE AREA TO CHARACTERIZE THE MATERIAL FOR PROPER DISPOSAL CONSIDERATIONS, CONSISTENT WITH CHARACTERIZATION REQUIREMENTS PROVIDED BY A FIRM THAT CAN HANDLE THE TREATMENT AND DISPOSAL. THIS INFORMATION IS INCLUDED IN TWO WASTE CHARACTERIZATION DOCUMENTS AVAILABLE TO BIDDERS ON FILE WITH KANE COUNTY DIVISION OF TRANSPORTATION.
2. THE DESIGN TEAM IDENTIFIED HAZARDOUS LEVELS OF LEAD-IMPACTED SOIL WITHIN THE HAZARDOUS WASTE DISPOSAL AREA. THE ASSUMED OPTION FOR HANDLING AND DISPOSAL OF SPOILS WITHIN THE HAZARDOUS WASTE DISPOSAL AREA INCLUDES EXCAVATION AND TRANSPORT TO AN OFF-SITE FACILITY FOR BATCH TREATMENT TO RENDER THE SPOILS NON-HAZARDOUS AND ULTIMATE DISPOSAL IN A FACILITY THAT ACCEPTS SUCH POST-TREATED SOILS.
4. THE COUNTY AND COUNTY ENVIRONMENTAL REPRESENTATIVES WILL BE ON SITE TO MANAGE AND MONITOR OPERATIONS ASSOCIATED WITH THE REMOVAL OF THE HAZARDOUS WASTE TO ENSURE COMPLIANCE WITH AND APPROVAL BY THE IEPA. THE CONTRACTOR IS EXPECTED TO WORK IN COOPERATION WITH THESE INDIVIDUALS. TEMPORARY WELLS MAY BE INSTALLED (BY OTHERS) TO FACILITATE THE MONITORING OF GROUNDWATER QUALITY PRIOR TO AND/OR AFTER THE REMOVAL OF THE HAZARDOUS WASTE. CONTRACTOR SHALL BE AWARE OF AND PROTECT EXISTING GROUNDWATER MONITORING WELLS UNTIL THEY ARE NO LONGER NEEDED, AT WHICH POINT THE CONTRACTOR SHALL REMOVE THE WELLS IF NECESSARY.

NON-SPECIAL WASTE DISPOSAL AREA - IDOT 669.05 A(5) SOILS

THE NON-SPECIAL WASTE DISPOSAL AREA IS FROM STATION 2234+50 TO STATION 2235+75 AND IS BOUND BY THE PROPOSED RIGHT-OF-WAY TO THE NORTH AND THE FORMER EXISTING BOLZ ROAD RIGHT-OF-WAY TO THE SOUTH. ALL EXCAVATED SOIL WITHIN THIS AREA SHALL BE PROCESSED AS NON-SPECIAL WASTE DISPOSAL, AND IT IS QUANTIFIED AS SUCH. TOTAL PLAN QUANTITY WITHIN THIS LIMIT IS 6,191 CU YD. THIS VOLUME IS ALSO QUANTIFIED IN THIS CONTRACT AS EARTH EXCAVATION.

REFER TO THE PROJECT SPECIFICATION FOR REMOVAL AND DISPOSAL OF REGULATED SUBSTANCES FOR MORE INFORMATION INCLUDING WITH REPORTS AVAILABLE TO THE CONTRACTOR PERTAINING TO MATERIALS WITHIN THE HAZARDOUS WASTE DISPOSAL AREA AND THE NON-SPECIAL WASTE DISPOSAL AREA SOIL MANAGEMENT ZONES.



EXAMPLE TYPICAL SECTION FOR EARTHWORK DEFINITIONS

FILE NAME: I:\KANE\CD\13296-02_Longmeadow\Plan\Draw\CCDD_Sheets\SectionC2-ht-ear-thrnotes_1.cad.dgn



USER NAME = Ed Davis	DESIGNED - PFR	REVISED - 4/15/2020
	DRAWN - PFR	REVISED -
PLOT SCALE = 2.0000' / 1"	CHECKED - KDF	REVISED -
PLOT DATE = 4/15/2020	DATE - 01/13/2020	REVISED -

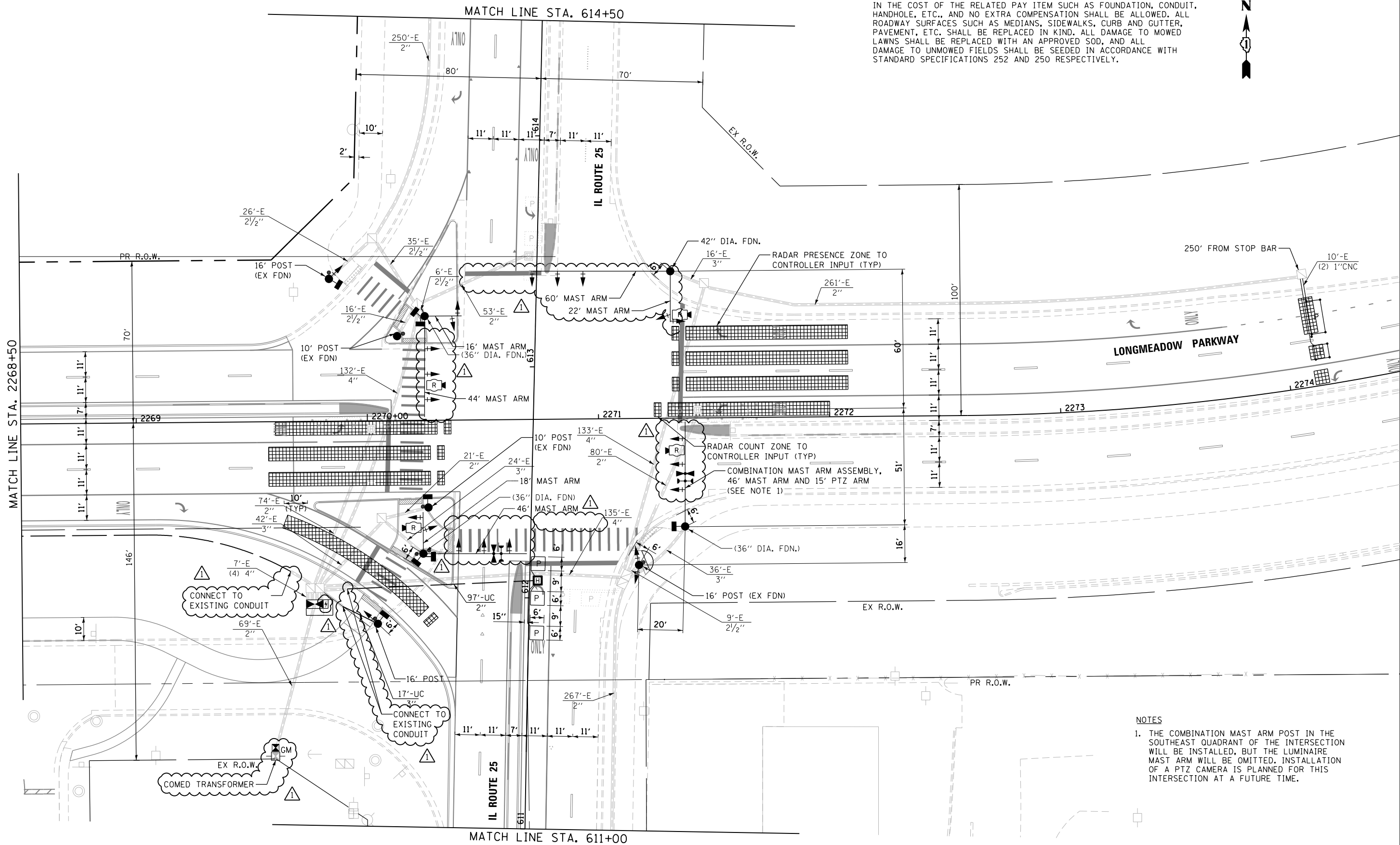
**STATE OF ILLINOIS
DEPARTMENT OF TRANSPORTATION**

EARTHWORK SCHEDULES

SCALE: NTS SHEET 2 OF 2 SHEETS STA. TO STA.

F.A.U. RTE.	SECTION	COUNTY	TOTAL SHEETS	SHEET NO.
2298	18-00215-21-BR	KANE	415	26
CONTRACT NO. 61G02			ILLINOIS FED. AID PROJECT	

RESTORATION OF WORK AREA.
 RESTORATION OF THE TRAFFIC SIGNAL WORK AREA SHALL BE INCLUDED IN THE COST OF THE RELATED PAY ITEM SUCH AS FOUNDATION, CONDUIT, HANDHOLE, ETC., AND NO EXTRA COMPENSATION SHALL BE ALLOWED. ALL ROADWAY SURFACES SUCH AS MEDIANS, SIDEWALKS, CURB AND GUTTER, PAVEMENT, ETC. SHALL BE REPLACED IN KIND. ALL DAMAGE TO MOWED LAWNS SHALL BE REPLACED WITH AN APPROVED SOD, AND ALL DAMAGE TO UNMOWED FIELDS SHALL BE SEEDING IN ACCORDANCE WITH STANDARD SPECIFICATIONS 252 AND 250 RESPECTIVELY.



- NOTES**
1. THE COMBINATION MAST ARM POST IN THE SOUTHEAST QUADRANT OF THE INTERSECTION WILL BE INSTALLED, BUT THE LUMINAIRE MAST ARM WILL BE OMITTED. INSTALLATION OF A PTZ CAMERA IS PLANNED FOR THIS INTERSECTION AT A FUTURE TIME.

FILE NAME = Section2-sh1-tp1.enl25.bnd.dgn

LOCAL COORDINATE SYSTEM

BURNS & MEDONNELL
 200 W. ADAMS STREET / SUITE 1600
 CHICAGO, IL 60606
 P: (312)-223-0920 / F: (312)-223-9664
 WEB: WWW.BURNSMCD.COM

USER NAME = rjiang	DESIGNED - MAP	REVISED - Δ 04/15/2020
DRAWN - HTS	CHECKED - MAP	REVISED -
PLOT SCALE = 40.0000' / in.	DATE - 2/28/2020	REVISED -
PLOT DATE = 4/15/2020		

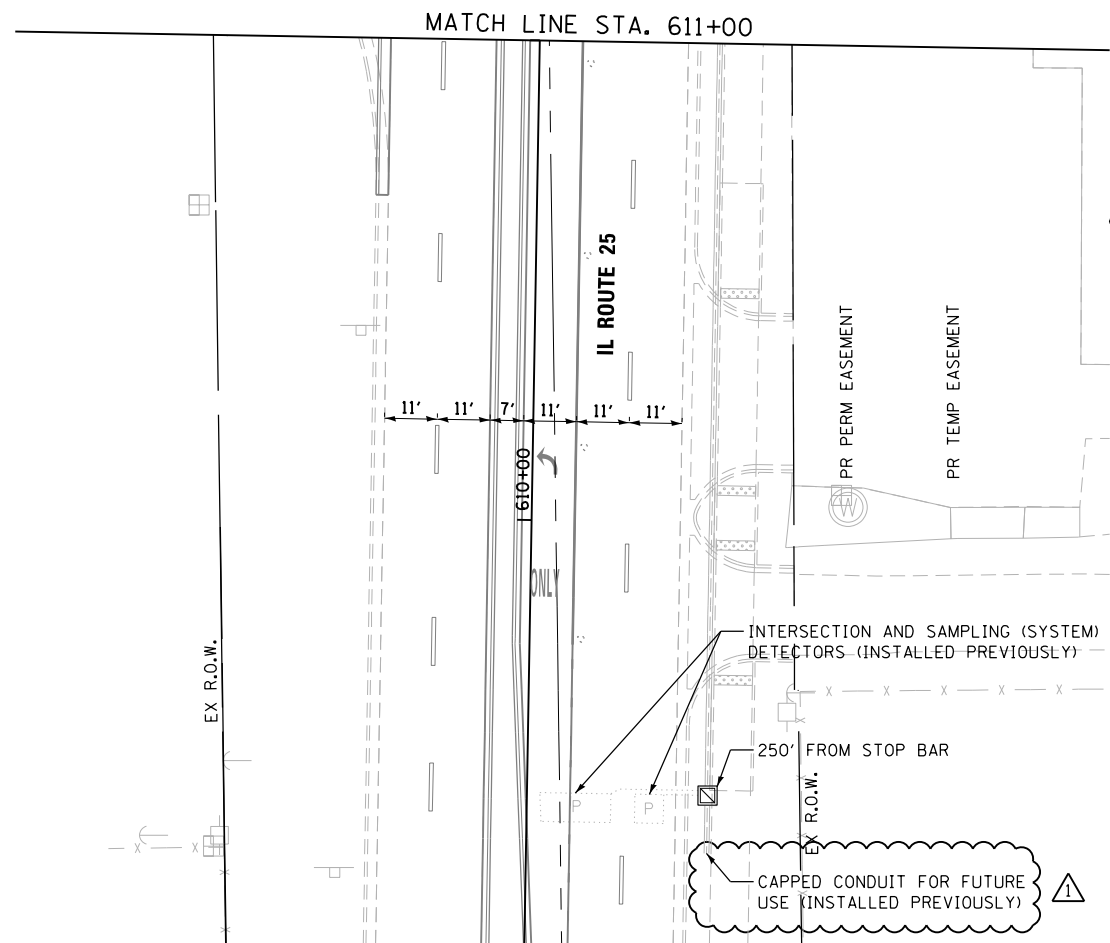
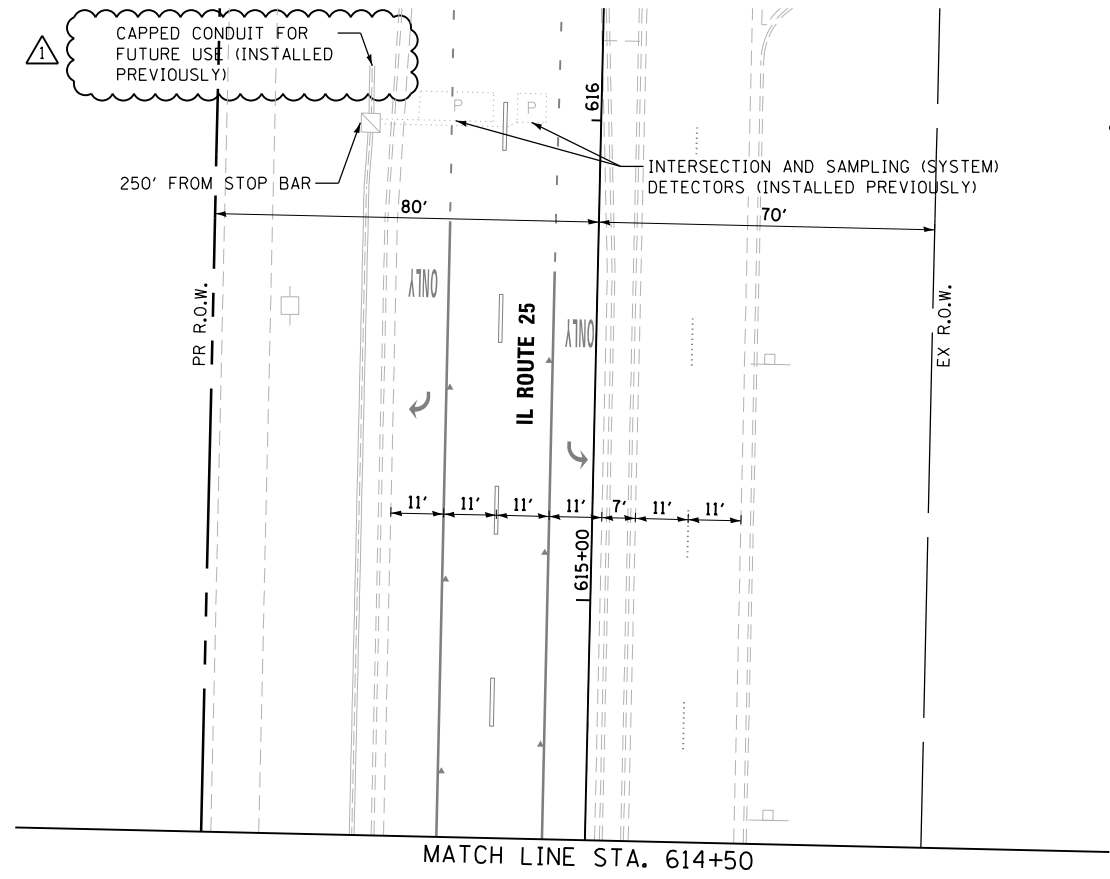
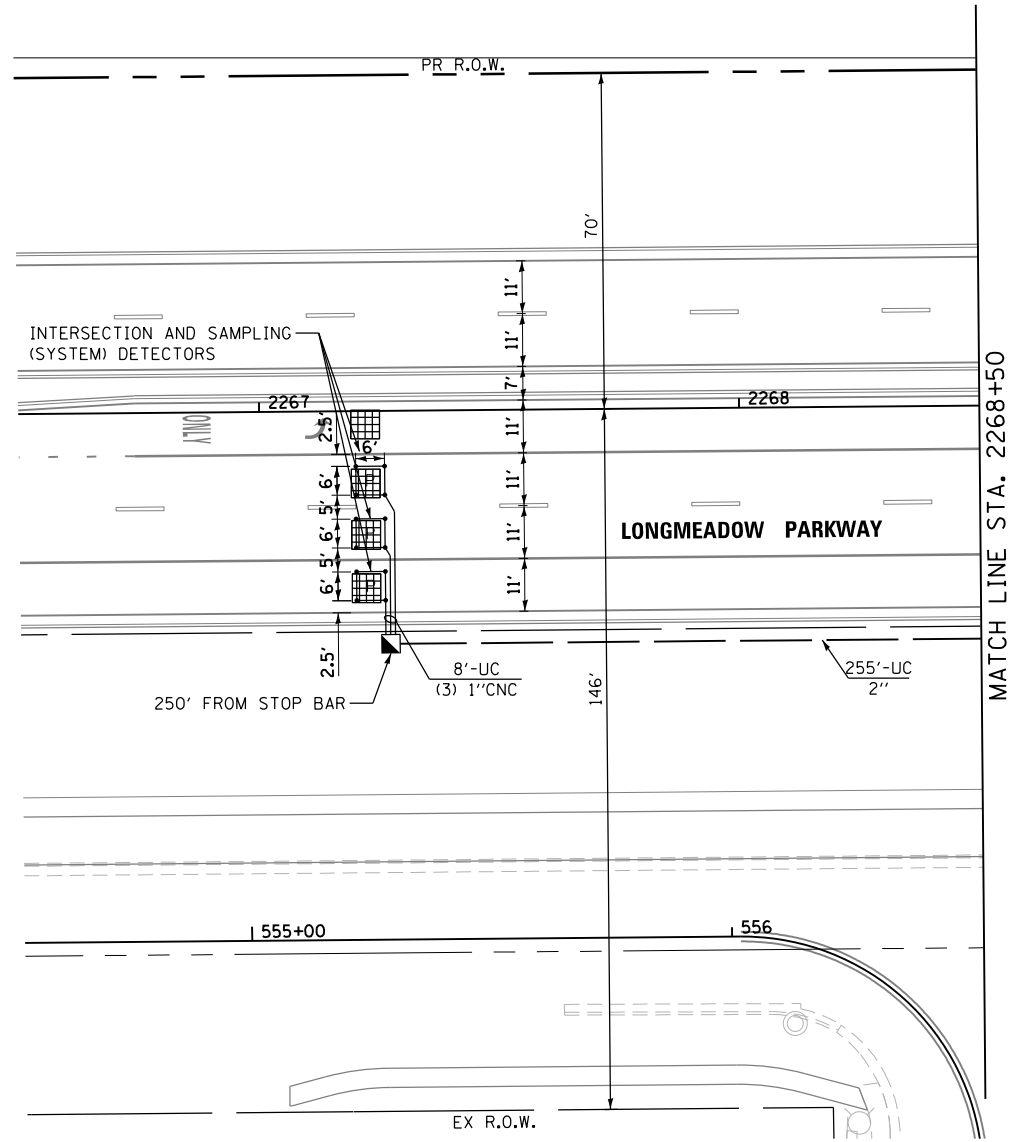
**STATE OF ILLINOIS
 DEPARTMENT OF TRANSPORTATION**

**TRAFFIC SIGNAL INSTALLATION PLAN
 IL ROUTE 25 AT LONGMEADOW PARKWAY**

SCALE: 1"=20' SHEET 1 OF 2 SHEETS STA. TO STA.

F.A.U. RTE.	SECTION	COUNTY	TOTAL SHEETS	SHEET NO.
2298	18-00215-21-BR	KANE	415	251
CONTRACT NO. 61G02			ILLINOIS FED. AID PROJECT	

TS 7992



RESTORATION OF WORK AREA.
 RESTORATION OF THE TRAFFIC SIGNAL WORK AREA SHALL BE INCLUDED IN THE COST OF THE RELATED PAY ITEM SUCH AS FOUNDATION, CONDUIT, HANDHOLE, ETC., AND NO EXTRA COMPENSATION SHALL BE ALLOWED. ALL ROADWAY SURFACES SUCH AS MEDIANS, SIDEWALKS, CURB AND GUTTER, PAVEMENT, ETC. SHALL BE REPLACED IN KIND. ALL DAMAGE TO MOWED LAWNS SHALL BE REPLACED WITH AN APPROVED SOD, AND ALL DAMAGE TO UNMOWED FIELDS SHALL BE SEEDED IN ACCORDANCE WITH STANDARD SPECIFICATIONS 252 AND 250 RESPECTIVELY.



FILE NAME = SectionC2-sh1-tsp\enl\25-rpg2_bmd.dgn

LOCAL COORDINATE SYSTEM

BURNS MEDONNELL
 200 W. ADAMS STREET / SUITE 1600
 CHICAGO, IL 60606
 P: (312)-223-0920 / F: (312)-223-9664
 WEB: WWW.BURNSMCD.COM

USER NAME = r.jiang	DESIGNED - MAP	REVISED - Δ 04/15/2020
	DRAWN - HTS	REVISED -
PLOT SCALE = 40.0000' / in.	CHECKED - MAP	REVISED -
PLOT DATE = 4/15/2020	DATE - 2/28/2020	REVISED -

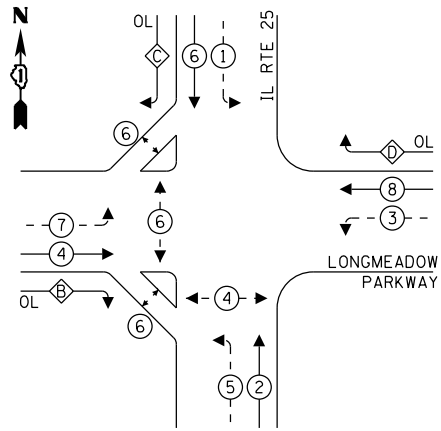
**STATE OF ILLINOIS
 DEPARTMENT OF TRANSPORTATION**

TRAFFIC SIGNAL INSTALLATION PLAN	
IL ROUTE 25 AT LONGMEADOW PARKWAY	
SCALE: 1"=20'	SHEET 2 OF 2 SHEETS STA. TO STA.

F.A.U. RTE.	SECTION	COUNTY	TOTAL SHEETS	SHEET NO.
2298	18-00215-21-BR	KANE	415	252
CONTRACT NO. 61G02			ILLINOIS FED. AID PROJECT	

TS 7992

PROPOSED CONTROLLER SEQUENCE



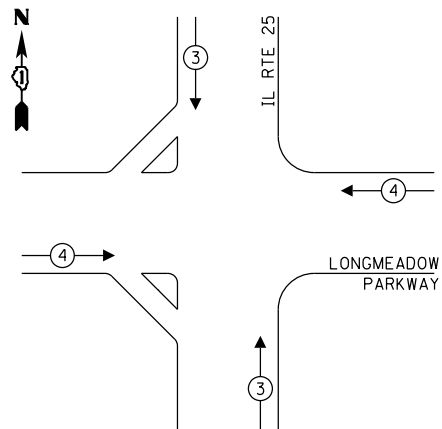
LEGEND:

- ⊙ — PROTECTED PHASE
- ⊙ — PROTECTED/PERMITTED PHASE
- ⊙ — PEDESTRIAN PHASE
- OL — OVERLAP
- FF — FREE FLOW

RIGHT TURN OVERLAP PHASE DESIGNATION:

OVERLAP LETTER	PERMISSIVE PHASE	PROTECTED PHASE
B =	4 +	5
C =	6 +	7
D =	8 +	1

PROPOSED EMERGENCY VEHICLE PREEMPTION SEQUENCE



TRAFFIC SIGNAL ELECTRICAL SERVICE REQUIREMENTS

TYPE	NO. OF LAMPS	LED WATTAGE	% OPERATION	TOTAL WATTAGE
SIGNAL (RED)	25	11	50	137.5
(YELLOW)	25	20	5	25.0
(GREEN)	25	12	45	135.0
ARROW	32	10	30	96.0
PED. SIGNAL	8	20	100	160.0
CONTROLLER	1	100	100	100.0
UPS	1	25	100	25.0
VIDEO SYSTEM	1	150	100	150.0
BLANK-OUT SIGN	-	25	5	-
FLASHER	-	-	50	-
STREET NAME SIGN	-	120	50	-
LUMINAIRE	-	190	50	-
PTZ CAMERA	-	100	100	-
TOTAL =				828.5

ENERGY COSTS TO:

ILLINOIS DEPARTMENT OF TRANSPORTATION
201 W. CENTER COURT
SCHAUMBURG IL 60196

ENERGY SUPPLY: CONTACT: NEW BUSINESS
PHONE: 866-639-3532
COMPANY: COMMONWEALTH EDISON
ACCOUNT NUMBER: ---

BURNS & MCDONNELL
200 W. ADAMS STREET / SUITE 1600
CHICAGO, IL 60606
P: (312)-223-0920 / F: (312)-223-9664
WEB: WWW.BURNSMCD.COM

USER NAME = r.jiang
DESIGNED - MAP
DRAWN - HTS
PLOT SCALE = 100.0000' / in.
PLOT DATE = 4/15/2020

DESIGNED - MAP
DRAWN - HTS
CHECKED - MAP
DATE - 2/28/2020
REVISED - Δ 04/15/2020
REVISED -
REVISED -
REVISED -

**STATE OF ILLINOIS
DEPARTMENT OF TRANSPORTATION**

**SCHEDULE OF QUANTITIES, CABLE PLAN, PHASE DESIGNATION DIAGRAM
AND EMERGENCY VEHICLE PREEMPTION SEQUENCE
IL ROUTE 25 AT LONGMEADOW PARKWAY**

SCALE: NONE SHEET 1 OF 1 SHEETS STA. TO STA.

F.A.U. RTE.	SECTION	COUNTY	TOTAL SHEETS	SHEET NO.
2298	18-00215-21-BR	KANE	415	253
				CONTRACT NO. 61G02
ILLINOIS FED. AID PROJECT				

TS 7992

INTERSECTION AND SAMPLING (SYSTEM) DETECTORS (INSTALLED PREVIOUSLY)

PROPOSED INTERSECTION AND SAMPLING (SYSTEM) DETECTORS

NOTE: PROVIDE 4x1/8 NO.6 BETWEEN CONTROLLER AND DOUBLE HANDHOLE

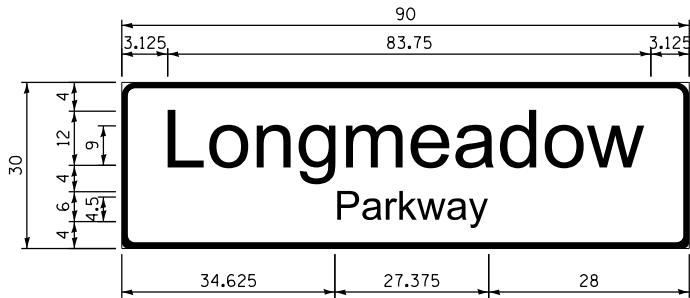
CABLE PLAN
(NOT TO SCALE)

INTERSECTION AND SAMPLING (SYSTEM) DETECTORS (INSTALLED PREVIOUSLY)

FILE NAME: SectionC2-sh1-tsoe01125_bond.dgn

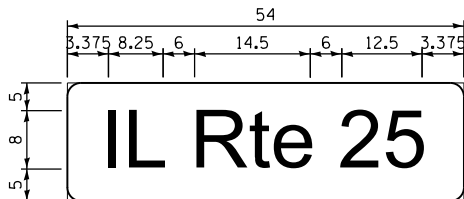
SUMMARY OF QUANTITIES

SIGN PANELS - TYPE 1 OR TYPE 2



DESIGN SERIES	AREA (SQ FT)	SIGN PANEL TYPE	SHEETING TYPE	QTY. REQUIRED
C	18.75	2	ZZ	2

STYLE (e) PER IDOT STD 720016-04



DESIGN SERIES	AREA (SQ FT)	SIGN PANEL TYPE	SHEETING TYPE	QTY. REQUIRED
D	15.0	1	ZZ	2

NOTE: SUPPORTING CHANNELS SHALL BE INSTALLED ON ALL STREET NAME SIGNS.

CODED PAY ITEM NUMBER	DESCRIPTION	UNIT OF MEASURE	TOTAL QUANTITY
72000100	SIGN PANEL - TYPE 1	SQ FT	30
72000200	SIGN PANEL - TYPE 2	SQ FT	38
80500020	ELECTRIC UTILITY SERVICE CONNECTION	EACH	0
81028200	UNDERGROUND CONDUIT, GALVANIZED STEEL, 3" DIA.	FOOT	324
81028220	UNDERGROUND CONDUIT, GALVANIZED STEEL, 3" DIA.	FOOT	17
81400100	HANDHOLE	EACH	1
81400200	HEAVY-DUTY HANDHOLE	EACH	1
85000205	MAINTENANCE OF EXISTING TRAFFIC SIGNAL INSTALLATION (SPECIAL)	EACH	1
87301215	ELECTRIC CABLE IN CONDUIT, SIGNAL NO. 14 2C	FOOT	1160
87301225	ELECTRIC CABLE IN CONDUIT, SIGNAL NO. 14 3C	FOOT	1618
87301245	ELECTRIC CABLE IN CONDUIT, SIGNAL NO. 14 5C	FOOT	2156
87301255	ELECTRIC CABLE IN CONDUIT, SIGNAL NO. 14 7C	FOOT	3507
87301305	ELECTRIC CABLE IN CONDUIT, LEAD-IN, NO. 14 1 PAIR	FOOT	5815
87301805	ELECTRIC CABLE IN CONDUIT, SERVICE, NO. 6 2C	FOOT	77
87301900	ELECTRIC CABLE IN CONDUIT, EQUIPMENT GROUNDING CONDUCTOR, NO. 6, 1C	FOOT	1543
87502440	TRAFFIC SIGNAL POST, GALVANIZED STEEL 10 FT.	EACH	2
87502500	TRAFFIC SIGNAL POST, GALVANIZED STEEL 16 FT.	EACH	3
87702289	STEEL MAST ARM ASSEMBLY AND POLE WITH DUAL MAST ARMS, 22 FT. AND 60 FT.	EACH	1
87702960	STEEL COMBINATION MAST ARM ASSEMBLY AND POLE, 46 FT.	EACH	1
87702197	STEEL MAST ARM ASSEMBLY AND POLE WITH DUAL MAST ARMS, 16 FT. AND 44 FT.	EACH	1
87702203	STEEL MAST ARM ASSEMBLY AND POLE WITH DUAL MAST ARMS, 18 FT. AND 46 FT.	EACH	1
87800100	CONCRETE FOUNDATION, TYPE A	FOOT	4
87800420	CONCRETE FOUNDATION, TYPE E 42-INCH DIAMETER	FOOT	22
88030020	SIGNAL HEAD, LED, 1-FACE, 3-SECTION, MAST-ARM MOUNTED	EACH	7
88030050	SIGNAL HEAD, LED, 1-FACE, 3-SECTION, BRACKET MOUNTED	EACH	1
88030100	SIGNAL HEAD, LED, 1-FACE, 5-SECTION, BRACKET MOUNTED	EACH	3
88030110	SIGNAL HEAD, LED, 1-FACE, 5-SECTION, MAST-ARM MOUNTED	EACH	11
88100710	PEDESTRIAN SIGNAL HEAD, LED, 1-FACE, BRACKET MOUNTED	EACH	1
88200110	TRAFFIC SIGNAL BACKPLATE, LOUVERED	EACH	18
88500100	INDUCTIVE LOOP DETECTOR	EACH	12
88600700	PREFORMED DETECTOR LOOP	FOOT	340
88700200	LIGHT DETECTOR	EACH	4
88700300	LIGHT DETECTOR AMPLIFIER	EACH	1
88800100	PEDESTRIAN PUSH BUTTON	EACH	7
X0324085	EMERGENCY VEHICLE PRIORITY SYSTEM LINE SENSOR CABLE, NO. 20 3/C	FOOT	404
Y0325476	BADAR VEHICLE DETECTION SYSTEM	EACH	1
X1400101	NETWORK CONFIGURATION	L SUM	0
X1400081	FULL-ACTUATED CONTROLLER AND TYPE SUPER P CABINET (SPECIAL)	EACH	1
X1400190	SERVICE INSTALLATION, GROUND MOUNTED, METERS	EACH	1
Y8620200	UNINTERRUPTABLE POWER SUPPLY, SPECIAL	EACH	1
Z0033040	ELECTRIC SERVICE DISCONNECT, LIGHTING AND TRAFFIC SIGNAL	EACH	0

FILE NAME = Section2-shr-tsoq-IL25.bmd.dgn

LOCAL COORDINATE SYSTEM

BURNS & MCDONNELL
 200 W. ADAMS STREET / SUITE 1600
 CHICAGO, IL 60606
 P: (312)-223-0920 / F: (312)-223-9664
 WEB: WWW.BURNSMCD.COM

USER NAME = r.jiang	DESIGNED - MAP	REVISED - Δ 04/15/2020
	DRAWN - HTS	REVISED -
PLOT SCALE = 100.0000' / in.	CHECKED - MAP	REVISED -
PLOT DATE = 4/15/2020	DATE - 2/28/2020	REVISED -

STATE OF ILLINOIS
 DEPARTMENT OF TRANSPORTATION

TRAFFIC SIGNAL INSTALLATION
 SUMMARY OF QUANTITIES
 IL ROUTE 25 AT LONGMEADOW PARKWAY

SCALE: NONE SHEET 1 OF 1 SHEETS STA. TO STA.

F.A.U. RTE.	SECTION	COUNTY	TOTAL SHEETS	SHEET NO.
2298	18-00215-21-BR	KANE	415	254
			CONTRACT NO. 61G02	
ILLINOIS FED. AID PROJECT				

TS 7992