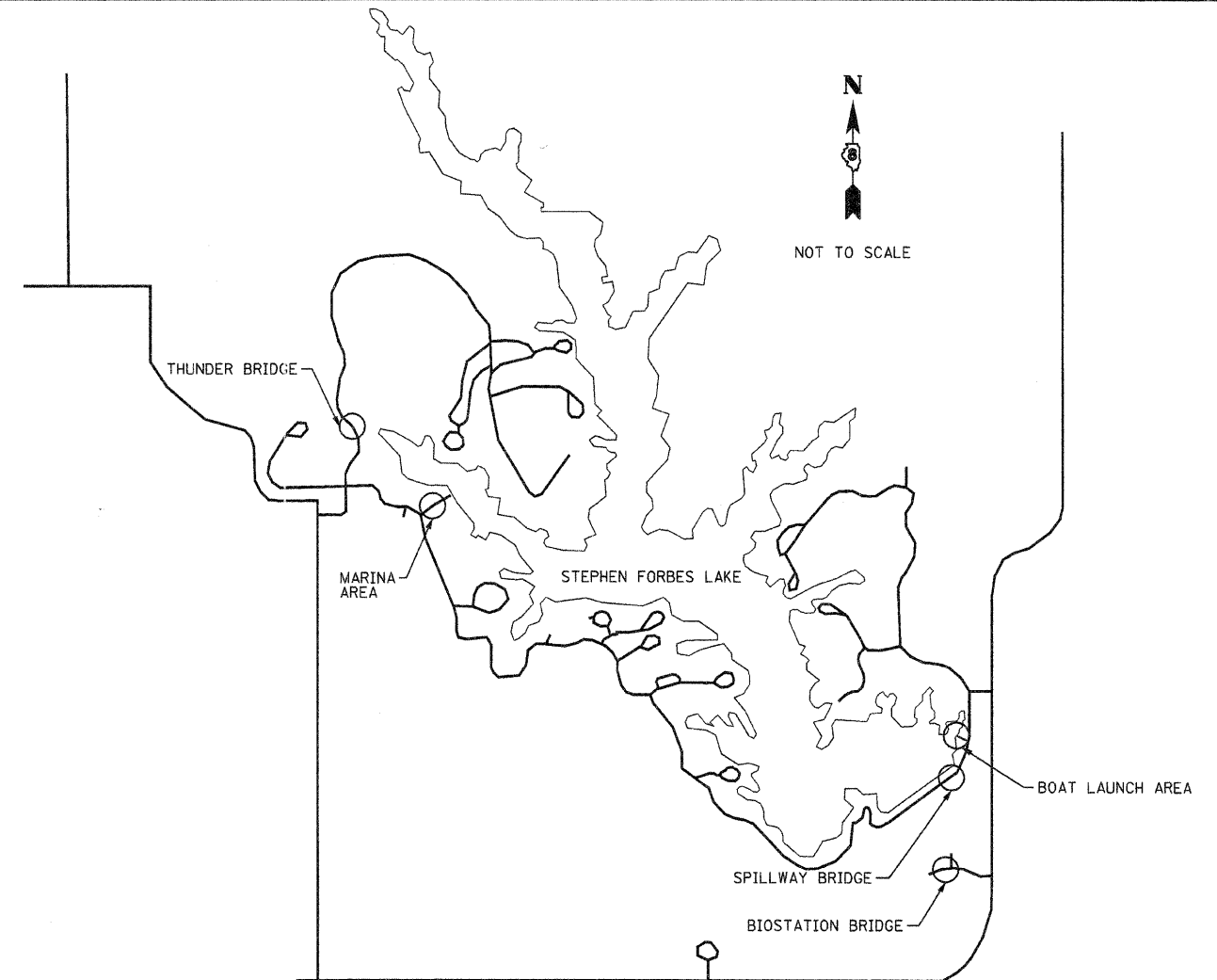
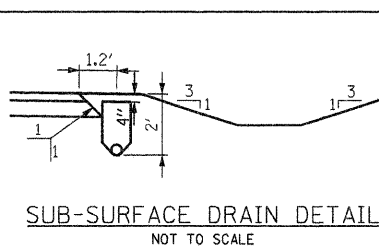
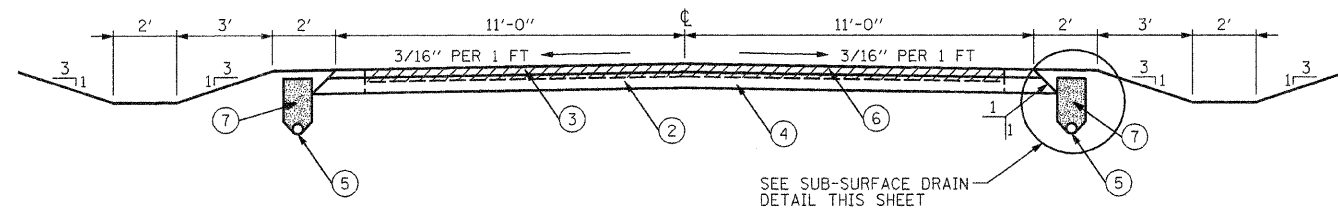
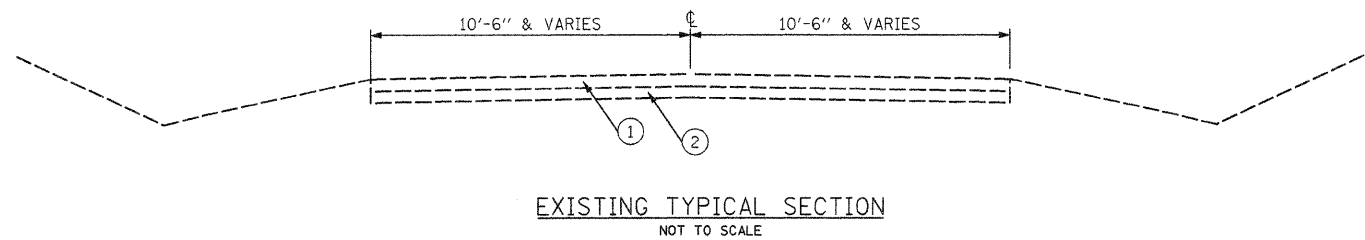
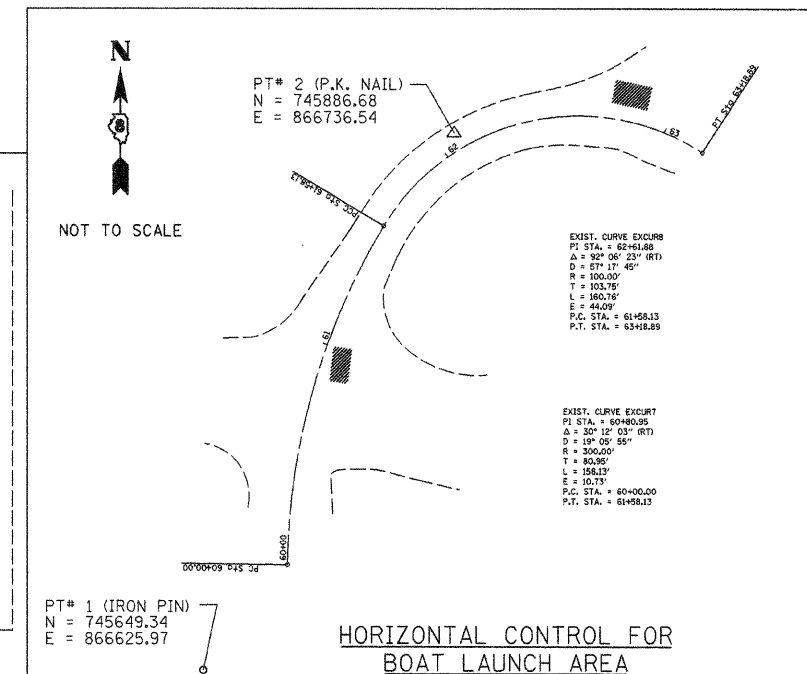
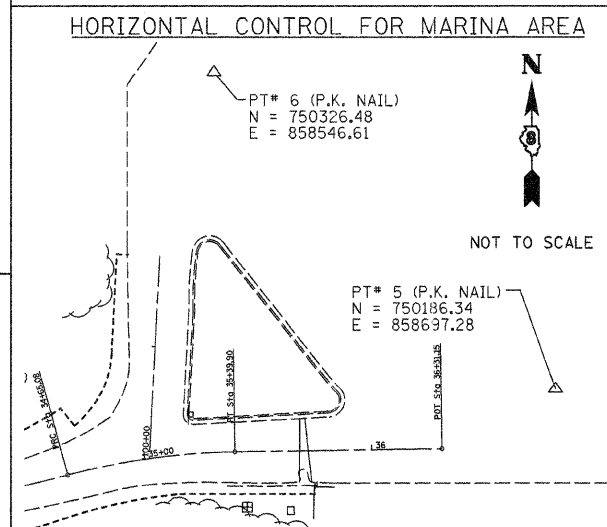


- LEGEND**
- ① EXISTING HOT MIX ASPHALT, 5"
 - ② EXISTING AGGREGATE BASE COURSE (DEPTH UNKNOWN)
 - ③ PROPOSED HOT MIX ASPHALT SURFACE COURSE, MIX "C" N70, 3"
 - ④ PROPOSED AGGREGATE BASE COURSE, TYPE B, 6"
 - ⑤ PIPE UNDERDRAINS, 4"
 - ⑥ PROPOSED HOT MIX ASPHALT SURFACE REMOVAL, 5"
 - ⑦ TRENCH BACKFILL (FA 1 OR FA 2)



ALL COORDINATES ARE BASED ON VASCONCELLES ENGINEERING ASSUMED DATUM



FILE NAME =	USER NAME = #USER#	DESIGNED - T.T.P.	REVISED -
#FILE#		DRAWN - S.D.K.	REVISED -
	PLOT SCALE = #SCALE#	CHECKED - R.H.D.	REVISED -
	PLOT DATE = #DATE#	DATE - 11/5/07	REVISED -

**STATE OF ILLINOIS
DEPARTMENT OF TRANSPORTATION**

**TYPICAL SECTIONS AND OVERALL LAYOUT
STEPHEN FORBES STATE PARK**

SCALE: SHEET NO. 3 OF 15 SHEETS STA. TO STA.

F.A. RTE.	SECTION	COUNTY	TOTAL SHEETS	SHEET NO.
		MARION	15	3
CONTRACT NO. 44977				
FED. ROAD DIST. NO. ILLINOIS FED. AID PROJECT				