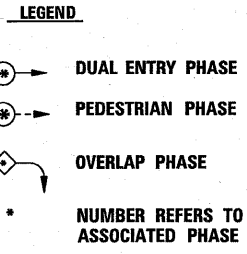
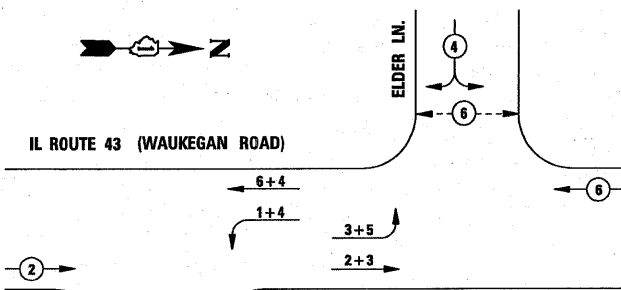
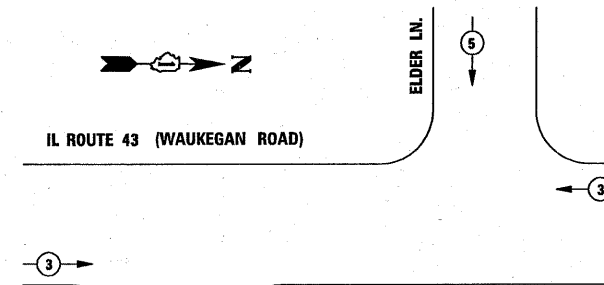


CONTROLLER SEQUENCE



PHASE DESIGNATION DIAGRAM

EMERGENCY VEHICLE PREEMPTION SEQUENCE



PROPOSED EMERGENCY VEHICLE PREEMPTOR			
EMERGENCY VEHICLE PREEMPTOR	3	5	6
MOVEMENT	←	↑	↓

CONSTRUCTION NOTES:

REMOVE EXISTING CONTROLLER AND CABINET. INSTALL NEW CONTROLLER AND TYPE IV CABINET, SPECIAL, RE-USE EXISTING FOUNDATION. RELOCATE EXISTING EMERGENCY VEHICLE PRIORITY SYSTEM, PHASING UNIT TO NEW CONTROLLER CABINET. RELOCATION OF THE EXISTING EMERGENCY PRIORITY SYSTEM SHALL BE INCLUDED IN THE NEW CONTROLLER UNIT PRICE.

CABLE PLAN LEGEND

	PROPOSED	EXISTING
CONTROLLER CABINET	[Symbol]	[Symbol]
RAILROAD CONTROL CABINET	[Symbol]	[Symbol]
SERVICE INSTALLATION, (P) POLE OR (G) GROUND MOUNT	[Symbol]	[Symbol]
TELEPHONE CONNECTION	[Symbol]	[Symbol]
GROUND ROD AT (C) CONTROLLER, (H) HANDHOLE, (P) POST, (M) MAST ARM, OR (S) SERVICE	[Symbol]	[Symbol]
FIBER OPTIC CABLE IN CONDUIT, NUMBER OF FIBERS AS NOTED	[Symbol]	[Symbol]
ELECTRIC CABLE IN CONDUIT, NO. 14, UNLESS OTHERWISE NOTED, NUMBER OF CONDUCTORS AS NOTED	[Symbol]	[Symbol]
GROUND CABLE IN CONDUIT NO. 6 COPPER (GREEN)	[Symbol]	[Symbol]
SIGNAL FACE WITH BACKPLATE, "P" INDICATES PROGRAMMED HEAD	[Symbol]	[Symbol]
12" (300mm) RED WITH 8" (200mm) YELLOW AND GREEN TRAFFIC SIGNAL FACE	[Symbol]	[Symbol]
12" (300mm) TRAFFIC SIGNAL SECTION	[Symbol]	[Symbol]
12" (300mm) PEDESTRIAN SIGNAL SECTION	[Symbol]	[Symbol]
ILLUMINATED SIGN "NO LEFT TURN"	[Symbol]	[Symbol]
ILLUMINATED SIGN "NO RIGHT TURN"	[Symbol]	[Symbol]
PUSHBUTTON DETECTOR	[Symbol]	[Symbol]
DETECTOR LOOP	[Symbol]	[Symbol]
PERFORMED DETECTOR LOOP	[Symbol]	[Symbol]
MICROWAVE VEHICLE SENSOR	[Symbol]	[Symbol]
VIDEO DETECTOR	[Symbol]	[Symbol]
CLOSED CIRCUIT TV	[Symbol]	[Symbol]
EMERGENCY VEHICLE SYSTEM DETECTOR	[Symbol]	[Symbol]
CONFIRMATION BEACON	[Symbol]	[Symbol]
UN-INTERRUPTABLE POWER SUPPLY (UPS)	[Symbol]	[Symbol]

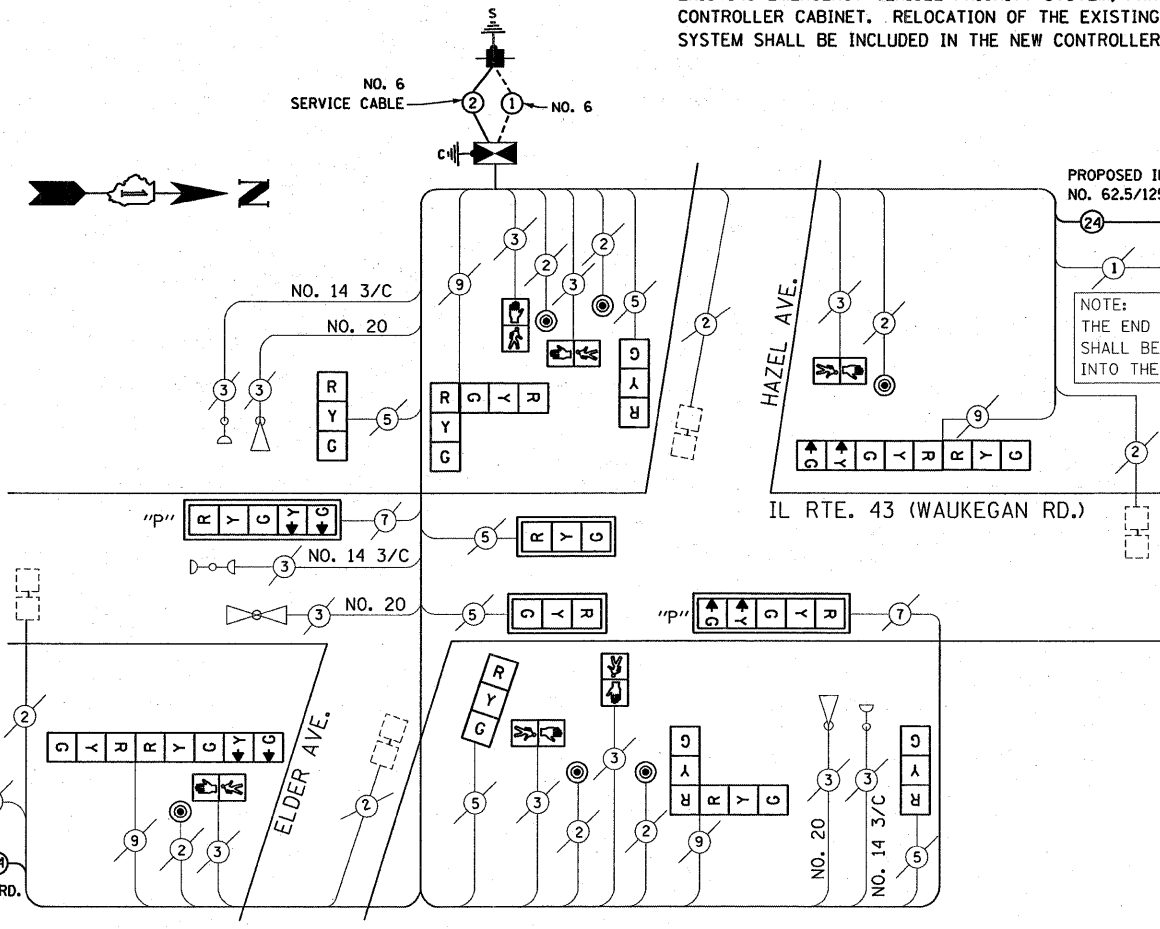
NOTE: THE END OF THE TRACER CABLE SHALL BE CONTINUOUS AND EXTEND INTO THE CONTROLLER CABINET

PROPOSED INTERCONNECT TO DEERFIELD RD. NO. 62.5/125 24F FIBER OPTIC CABLE

PROPOSED INTERCONNECT TO GREENWOOD AVE. NO. 62.5/125 24F FIBER OPTIC CABLE

NOTE: THE END OF THE TRACER CABLE SHALL BE CONTINUOUS AND EXTEND INTO THE CONTROLLER CABINET

CABLE PLAN



SCHEDULE OF QUANTITIES

ITEM	UNIT	QUANTITY
ENGINEER'S FIELD OFFICE, TYPE A	CAL MO	0.25
MAINTENANCE OF EXISTING TRAFFIC SIGNAL INSTALLATION	EACH	1
FULL-ACTUATED CONTROLLER AND TYPE IV CABINET, SPECIAL	EACH	1
TRANSCIVER - FIBER OPTIC	EACH	1
ELECTRIC CABLE IN CONDUIT, SERVICE, NO. 6 2C	FOOT	40
ELECTRIC CABLE IN CONDUIT, GROUNDING, NO. 6 1C	FOOT	40
OPTICALLY PROGRAMMED SIGNAL HEAD, LED, 1-FACE, 5-SECTION, MAST ARM MOUNTED	EACH	2
SIGNAL HEAD, LED, 1-FACE, 3-SECTION, MAST ARM MOUNTED	EACH	2
SIGNAL HEAD, LED, 1-FACE, 3-SECTION, BRACKET MOUNTED	EACH	4

SCHEDULE OF QUANTITIES

ITEM	UNIT	QUANTITY
SIGNAL HEAD, LED, 2-FACE, 1-3 SECTION, 1-5-SECTION, BRACKET MOUNTED	EACH	2
SIGNAL HEAD, LED, 2-FACE, 3 SECTION, BRACKET MOUNTED	EACH	2
TRAFFIC SIGNAL POST, GALVANIZED STEEL 14 FT.	EACH	3
TRAFFIC SIGNAL POST, GALVANIZED STEEL 16 FT.	EACH	2
TRAFFIC SIGNAL POST, GALVANIZED STEEL 18 FT.	EACH	2
PEDESTRIAN SIGNAL HEAD, LED, 1-FACE, BRACKET MOUNTED	EACH	6
PEDESTRIAN PUSH-BUTTON	EACH	6
TRAFFIC SIGNAL BACKPLATE, LOUVERED, ALUMINUM	EACH	4
SERVICE INSTALLATION, POLE-MOUNTED	EACH	1
REMOVE EXISTING TRAFFIC SIGNAL EQUIPMENT	EACH	1
RE-OPTIMIZE TRAFFIC SIGNAL SYSTEM - LEVEL II	EACH	1
INDUCTIVE LOOP DETECTOR	EACH	4

I.D.O.T TRAFFIC SIGNAL INSTALLATION ELECTRICAL SERVICE REQUIREMENTS					TOTAL WATTAGE
TYPE	NO. LAMPS	WATTAGE (INCAND.)	WATTAGE LED	% OPERATION	
SIGNAL (RED)	16	135	17	0.50	136.00
(YELLOW)	16	135	25	0.25	100.00
(GREEN)	16	135	15	0.25	60.00
ARROW	8	135	12	0.10	9.60
PED. SIGNAL	6	90	25	1.00	150.00
CONTROLLER	1	100	100	1.00	100.00
ILLUM. SIGN		84		0.05	

ENERGY COSTS TO: ILLINOIS DEPARTMENT OF TRANSPORTATION
 201 WEST CENTER COURT
 SCHLAUBURG, ILLINOIS 60196-1096
 ENERGY SUPPLY CONTACT: PHONE: 847 816-5248
 COMPANY: COMED

FOUNDATION (DEPTH)	(FT.) (m)	CABLE SLACK	(FT.) (m)	VERTICAL	(FT.) (m)
TYPE A - POST	4 (1.2)	HANDHOLE	6.5 (2.0)	ALL FOUNDATIONS	3.5 (1.0)
D - FOUNDATION	4 (1.2)	DOUBLE HANDHOLE	13 (4.0)	MAST ARM (L) POLE	20' + L - 2 = (6m+L-0.6m)=
C - M. ARM POLE		SIGNAL POST	2 (1.0)	BRACKET MOUNTED	13 (4.0)
24" (600mm)	10 (3.0)	CONTROLLER CAB.	1 (0.5)	PED. PUSHBUTTON	4 (1.2)
30" (750mm)	15 (4.6)	FIBER OPTIC	13 (4.0)	ELECTRIC SERVICE	13.5 (4.1)
		ELECTRIC SERVICE	1 (0.5)	SERVICE TO GROUND	13.5 (4.1)
		GROUND CABLE	1 (0.5)	POST MOUNTED	6 (1.8)

NOTE: THE TRAFFIC SIGNAL CONTROL EQUIPMENT FOR THIS PROJECT SHALL BE "ECONOLITE" TO MATCH THE ADJACENT SYSTEM.