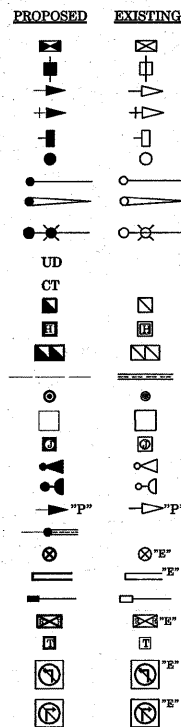


TRAFFIC SIGNAL LEGEND

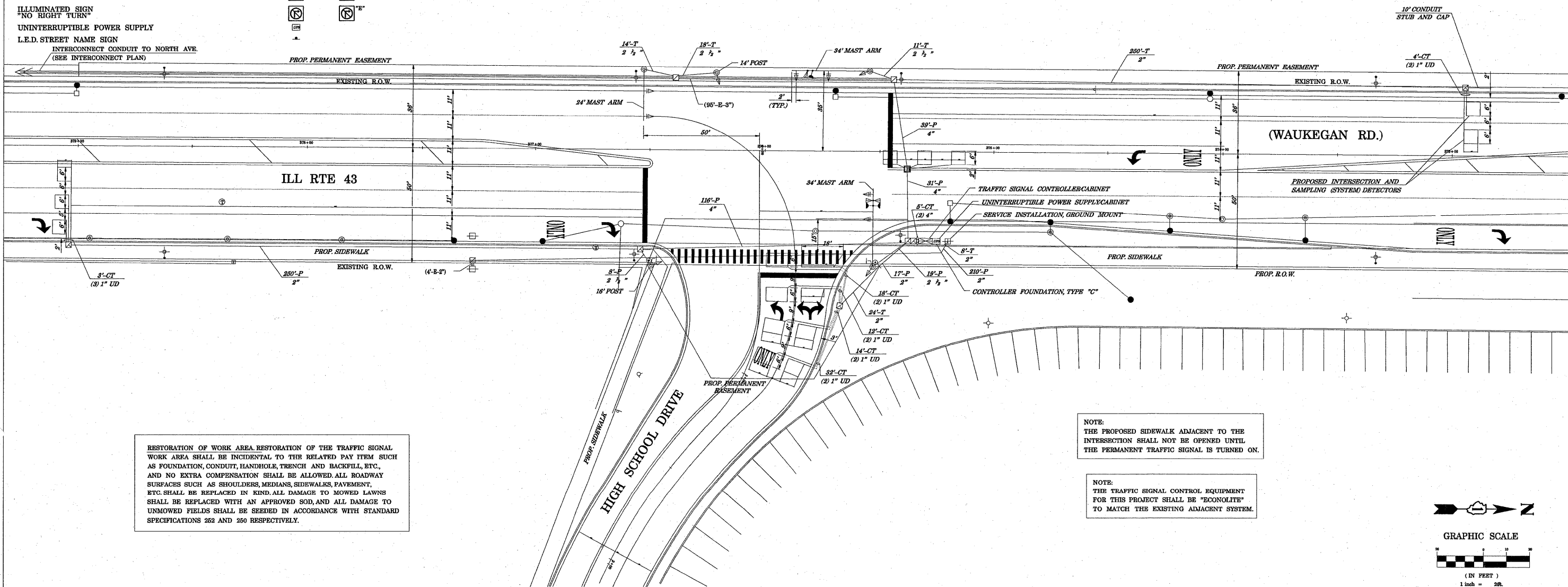
- CONTROLLER
- SERVICE INSTALLATION
- SIGNAL HEAD
- SIGNAL HEAD WITH BACKPLATE
- SIGNAL HEAD, PEDESTRIAN
- SIGNAL POST
- MAST ARM ASSEMBLY AND POLE, STEEL
- MAST ARM ASSEMBLY AND POLE, ALUMINUM
- COMBINATION MAST ARM ASSEMBLY AND POLE, STEEL WITH LUMINAIRE
- UNIT DUCT
- COMMON TRENCH
- HANDHOLE
- HEAVY DUTY HANDHOLE
- DOUBLE HANDHOLE
- G.S. CONDUIT IN TRENCH (T) OR PUSHED (P)
- PEDESTRIAN PUSHBUTTON DETECTOR
- DETECTOR LOOP
- CAST IRON JUNCTION BOX
- EMERGENCY VEHICLE LIGHT DETECTOR
- CONFIRMATION BEACON
- SIGNAL HEAD OPTICALLY PROGRAMMED
- CONDUIT SPLICE
- WOOD POLE
- RACEWAY FOR MAGNETIC DETECTOR, TYPE I OR TYPE II
- VEHICLE DETECTOR, NON COMPENSATED MAGNETIC TYPE
- RAILROAD CONTROL CABINET
- TELEPHONE CONNECTION
- ILLUMINATED SIGN "NO LEFT TURN"
- ILLUMINATED SIGN "NO RIGHT TURN"
- UNINTERRUPTIBLE POWER SUPPLY
- L.E.D. STREET NAME SIGN



FOR INFORMATION ONLY  
 THIS LOCATION WILL BE DONE BY PERMIT AND OTHER.

CONSTRUCTION NOTES:

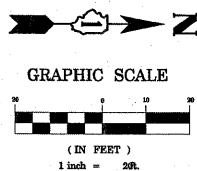
- 1 NEW TRAFFIC SIGNAL INSTALLATION AT DEERFIELD HIGH SCHOOL ENTRANCE WILL BE DONE UNDER PERMIT NO.049-38092.



RESTORATION OF WORK AREA RESTORATION OF THE TRAFFIC SIGNAL WORK AREA SHALL BE INCIDENTAL TO THE RELATED PAY ITEM SUCH AS FOUNDATION, CONDUIT, HANDHOLE, TRENCH AND BACKFILL, ETC., AND NO EXTRA COMPENSATION SHALL BE ALLOWED. ALL ROADWAY SURFACES SUCH AS SHOULDERS, MEDIANS, SIDEWALKS, PAVEMENT, ETC. SHALL BE REPLACED IN KIND. ALL DAMAGE TO MOWED LAWNS SHALL BE REPLACED WITH AN APPROVED SOG, AND ALL DAMAGE TO UNMOWED FIELDS SHALL BE SEEDDED IN ACCORDANCE WITH STANDARD SPECIFICATIONS 252 AND 250 RESPECTIVELY.

NOTE: THE PROPOSED SIDEWALK ADJACENT TO THE INTERSECTION SHALL NOT BE OPENED UNTIL THE PERMANENT TRAFFIC SIGNAL IS TURNED ON.

NOTE: THE TRAFFIC SIGNAL CONTROL EQUIPMENT FOR THIS PROJECT SHALL BE "ECONOLITE" TO MATCH THE EXISTING ADJACENT SYSTEM.



**GEWALT HAMILTON**  
 ASSOCIATES, INC.  
 CONSULTING ENGINEERS & SURVEYORS  
 860 Forest Edge Drive Vernon Hills, IL 60061 Tel. 847.478.9700 Fax 847.478.9701

**COPYRIGHT NOTICE**  
 This drawing is the property of Gewalt Hamilton Associates, Inc. and is not to be used for any purpose other than the specific project and site named herein, and cannot be reproduced in any manner without the express written permission from Gewalt Hamilton Associates, Inc.

**TRAFFIC SIGNAL INSTALLATION PLAN**  
 IL RTE 43 (WAUKEGAN RD.) AT HIGH SCHOOL DRIVE  
 DEERFIELD, ILLINOIS

NO.	BY	DATE	REVISION
3	RIS	12-4-07	PER IDOT REVIEW COMMENTS
1	CAD	6-23-07	PER IDOT REVIEW COMMENTS

FILE: g:\gen\3818\3818.dwg	SHEET NUMBER:
DRAWN BY: TCM	16
DATE: 9/18/07	GHA PROJECT #
	3818.800
CHECKED BY: KLB	SCALE:
DATE: 9/18/07	1" = 20'
	OF 29 SHEETS