

ROUTE	SECTION	COUNTY	TOTAL SHEETS	SHEET NUMBER
FAU 3730	K (B & C) 2-I	COOK	12	2

Contract 60C27

INDEX OF SHEETS

1	TITLE SHEET
2	INDEX OF SHEETS, STATE STANDARDS
3	GENERAL NOTES
4	SUMMARY OF QUANTITIES
5-11	BRIDGE REPAIR DETAILS
12	TRAFFIC CONTROL AND PROTECTION FOR SIDE ROADS, INTERSECTION, AND DRIVEWAYS

STATE STANDARDS

701101-01	MULTI-LANE OFF-ROAD OPERATIONS
701301-02	LANE CLOSURE 2L, 2W SHORT TIME OPERATIONS
701606-05	URBAN LANE CLOSURE, MULTILANE, 2W WITH MOUNTABLE MEDIAN
701801-03	LANE CLOSURE MULTILANE 1W OR 2W CROSSWALK OR SIDEWALK CLOSURE
701901	TRAFFIC CONTROL DEVICES

ILLINOIS DEPARTMENT OF TRANSPORTATION
**INDEX OF SHEETS, STATE STANDARDS
AND GENERAL NOTES**
IL 1 (HALSTED STREET)
OVER LITTLE CALUMET RIVER
SN 016-0193

ROUTE	SECTION	COUNTY	TOTAL SHEETS	SHEET NUMBER
FAU 3730	K (B & C) 2-1	COOK	12	3

Contract 60C27

GENERAL NOTES

THE CONTRACTOR SHALL COORDINATE CONSTRUCTION ACTIVITIES WITH UTILITY COMPANIES AND THE CITY OF CHICAGO.

THE CONTRACTOR WILL NOT BE ALLOWED TO SET UP A YARD OR FIELD OFFICE ON STATE PROPERTY WITHOUT WRITTEN PERMISSION FROM THE DEPARTMENT.

WHEN ARTIFICIAL LIGHTING IS UTILIZED IN NIGHT OPERATIONS, THE CONTRACTOR SHALL EXERCISE THE UTMOST PRECAUTIONS IN PREVENTING ADVERSE VISIBILITY TO THE MOTORING PUBLIC AND ADJOINING RESIDENTIAL AREA.

IT SHALL BE THE CONTRACTOR'S RESPONSIBILITY TO VERIFY ALL DIMENSIONS & CONDITIONS EXISTING IN THE FIELD PRIOR TO CONSTRUCTION & ORDERING OF MATERIALS.

THE CONTRACTOR SHALL CONTACT THE DISTRICT ONE TRAFFIC CONTROL SUPERVISOR AT (847) 705-4470 A MINIMUM OF 72 HOURS IN ADVANCE OF BEGINNING WORK.

IT SHALL BE THE CONTRACTORS RESPONSIBILITY TO PROTECT AND MAINTAIN THE EXISTING BRIDGE LIGHTING AT ALL LOCATIONS.

THESE PLANS HAVE BEEN PREPARED FROM NOTES RECEIVED FROM THE BUREAU OF MAINTENANCE BRIDGE INSPECTORS.

DO NOT SCALE PLANS FOR CONSTRUCTION DIMENSIONS.

THE CONTRACTOR SHALL OBTAIN COAST GUARD APPROVAL TO OCCUPY NAVIGABLE WATERS, IF REQUIRED, FOR THE PROPOSED WORK. A WORK PLAN SHALL BE PREPARED BY THE CONTRACTOR, REVIEWED AND APPROVED BY THE ENGINEER AND BE SUBMITTED BY THE ENGINEER TO THE COAST GUARD AT THE ADDRESS LISTED BELOW FOR APPROVAL.

BRIDGE ADMINISTRATOR
US COAST GUARD
NINTH COAST GUARD DISTRICT
1240 E. NINTH ST
CLEVELAND, OH 44199-2060

BRIDGE GENERAL NOTES

ALL STRUCTURAL STEEL SHALL CONFORM TO AASHTO CLASSIFICATION M-270 GR. 36, UNLESS OTHERWISE NOTED .

FASTENERS SHALL BE HIGH STRENGTH BOLTS. BOLTS $\frac{3}{4}$ " ϕ , OPEN HOLES $\frac{13}{16}$ " ϕ , UNLESS OTHERWISE NOTED.

PLAN DIMENSIONS AND DETAILS RELATIVE TO EXISTING PLANS ARE SUBJECT TO ROUTINE VARIATIONS. THE CONTRACTOR SHALL FIELD VERIFY EXISTING DIMENSIONS AND DETAILS AFFECTING NEW CONSTRUCTION AND MAKE NECESSARY APPROVED ADJUSTMENTS PRIOR TO CONSTRUCTION OR ORDERING OF MATERIALS. SUCH VARIATIONS SHALL NOT BE CAUSE FOR ADDITIONAL COMPENSATION FOR A CHANGE IN SCOPE OF THE WORK, HOWEVER, THE CONTRACTOR WILL BE PAID FOR THE QUANTITY ACTUALLY FURNISHED BASED UPON THE UNIT PRICE BID FOR THE WORK.

ALL PLATES AND ANGLES SHALL BE GALVANIZED AFTER SHOP FABRICATION ACCORDING TO AASHTO M III AND ASTM A 385. ALL BOLTS, NUTS AND WASHERS, SHALL BE GALVANIZED ACCORDING TO AASHTO M 232.

ILLINOIS DEPARTMENT OF TRANSPORTATION

GENERAL NOTES
IL 1 (HALSTED STREET)
OVER LITTLE CALUMET RIVER
SN 016-0193

ROUTE	SECTION	COUNTY	TOTAL SHEETS	SHEET NUMBER
FAU 3730	K (B & C) 2-1	COOK	12	4

Contract 60C27

SUMMARY OF QUANTITIES

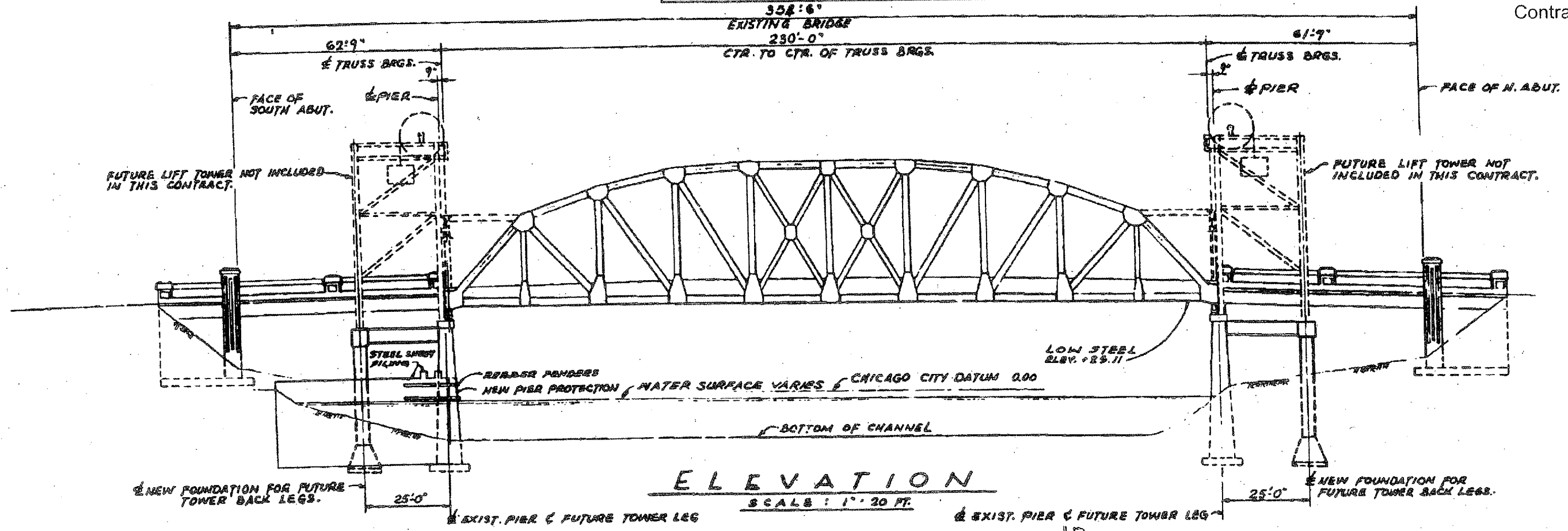
*URBAN
100% STATE*

CODE NUMBER	DESCRIPTION	UNIT	CONSTRUCTION TYPE CODE SFTY-2A 016-0193 TOTAL QUANTITY
X0324544	TROLLEY WHEEL SYSTEM REPLACEMENT	L SUM	1
50501130	STRUCTURAL STEEL REPAIR	POUND	134
67000400	ENGINEER'S FIELD OFFICE, TYPE A	CAL MO	2
67100100	MOBILIZATION	L SUM	1
70102625	TRAFFIC CONTROL AND PROTECTION, STANDARD 701606	L SUM	1

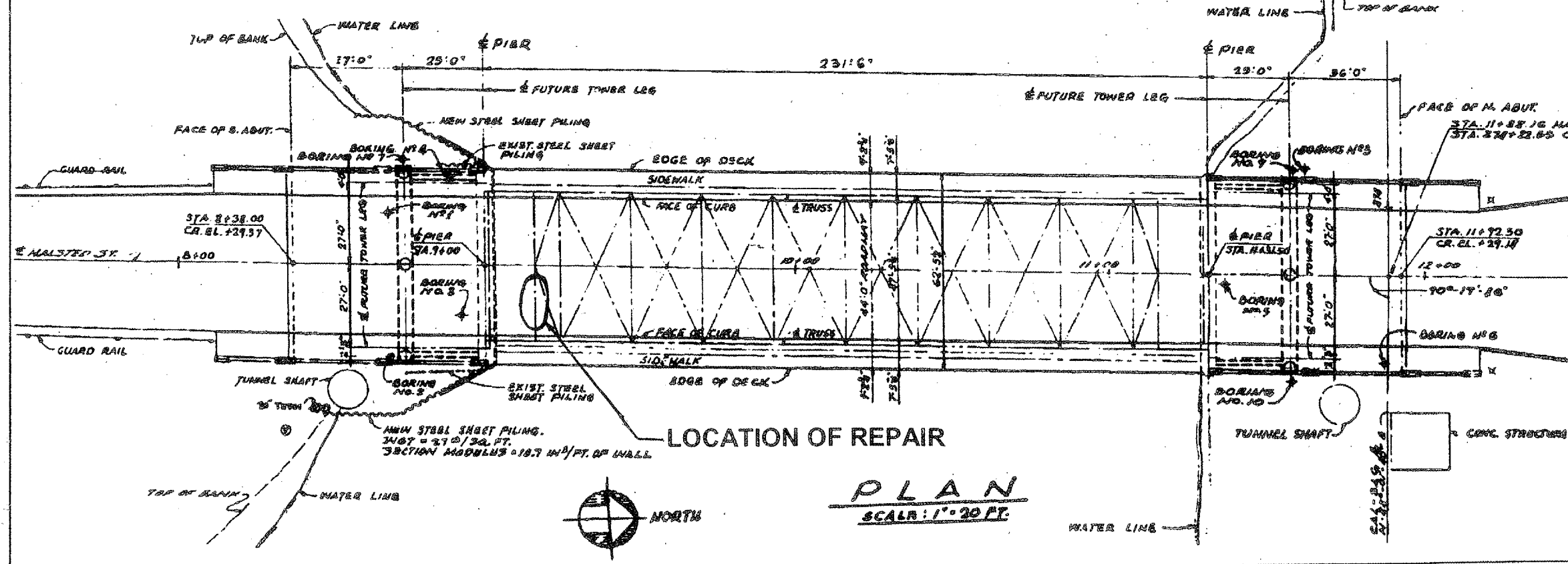
ILLINOIS DEPARTMENT OF TRANSPORTATION
SUMMARY OF QUANTITIES
 IL 1 (HALSTED STREET)
 OVER LITTLE CALUMET RIVER
 SN 016-0193

ROUTE	SECTION	COUNTY	TOTAL SHEETS	SHEET NUMBER
EAU 3730	K (B & C) 2-1	COOK	12	5

Contract 60C27



ELEVATION
SCALE: 1" = 20 FT.



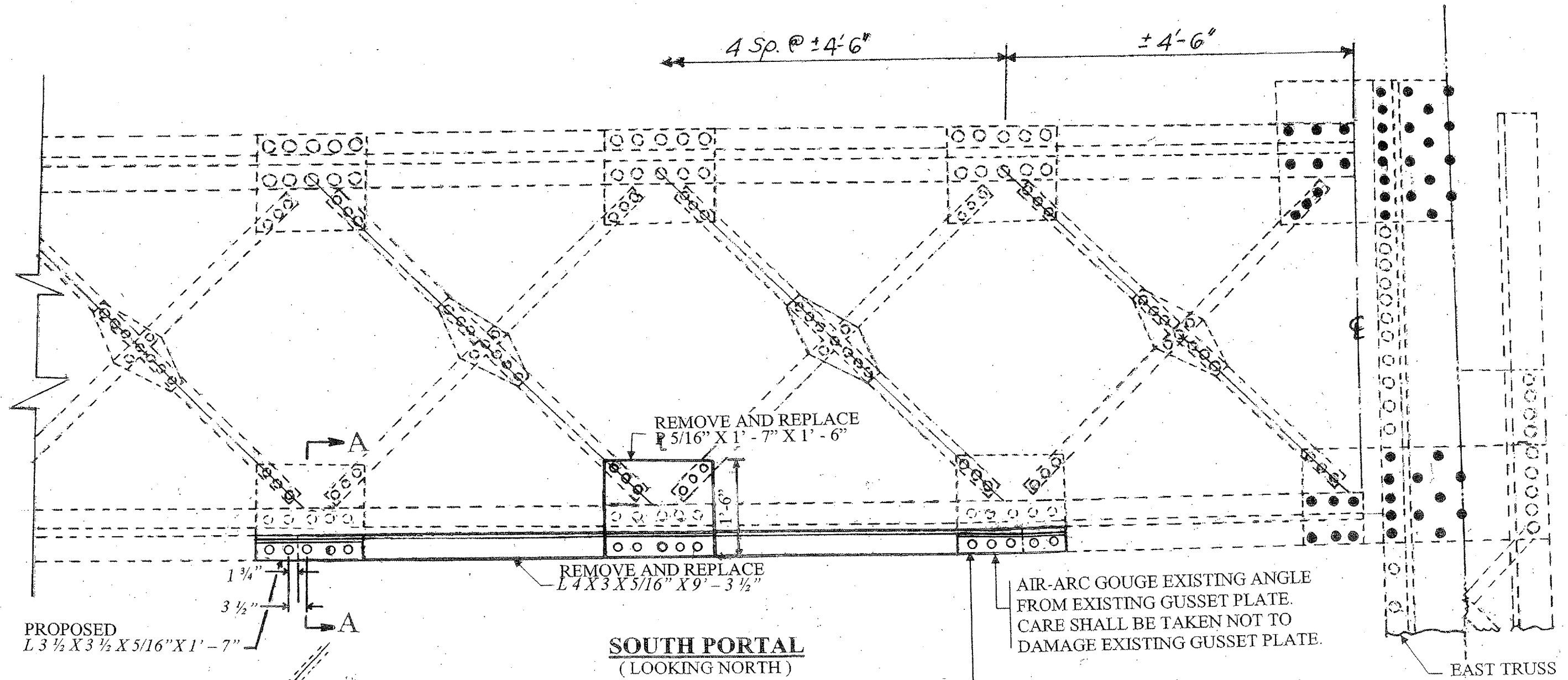
PLAN
SCALE: 1" = 20 FT.

FOR INFORMATION ONLY

ILLINOIS DEPARTMENT OF TRANSPORTATION
**PLAN AND ELEVATIONS
PORTAL DETAILS
IL 1 (HALSTED STREET)
OVER LITTLE CALUMET RIVER
SN 016-0193**

ROUTE	SECTION	COUNTY	TOTAL SHEETS	SHEET NUMBER
FAU 3730	K (B & C) 2-1	COOK	12	6

Contract 60C27



SOUTH PORTAL
(LOOKING NORTH)
SHOWING BOTTOM OF PORTAL.

PROPOSED
L 3 1/2 X 3 1/2 X 5/16" X 1'-7"

1 3/4"
3 1/2"

EXISTING
LACING BAR

L 3 1/2 X 3 1/2 X 5/16"

L 4 X 3 X 5/16"

SECTION A-A

AIR-ARC GOUGE EXISTING ANGLE
FROM EXISTING GUSSET PLATE.
CARE SHALL BE TAKEN NOT TO
DAMAGE EXISTING GUSSET PLATE.

PROPOSED
L 3 1/2 X 3 1/2 X 5/16" X 1'-7"

EAST TRUSS

NOTES:

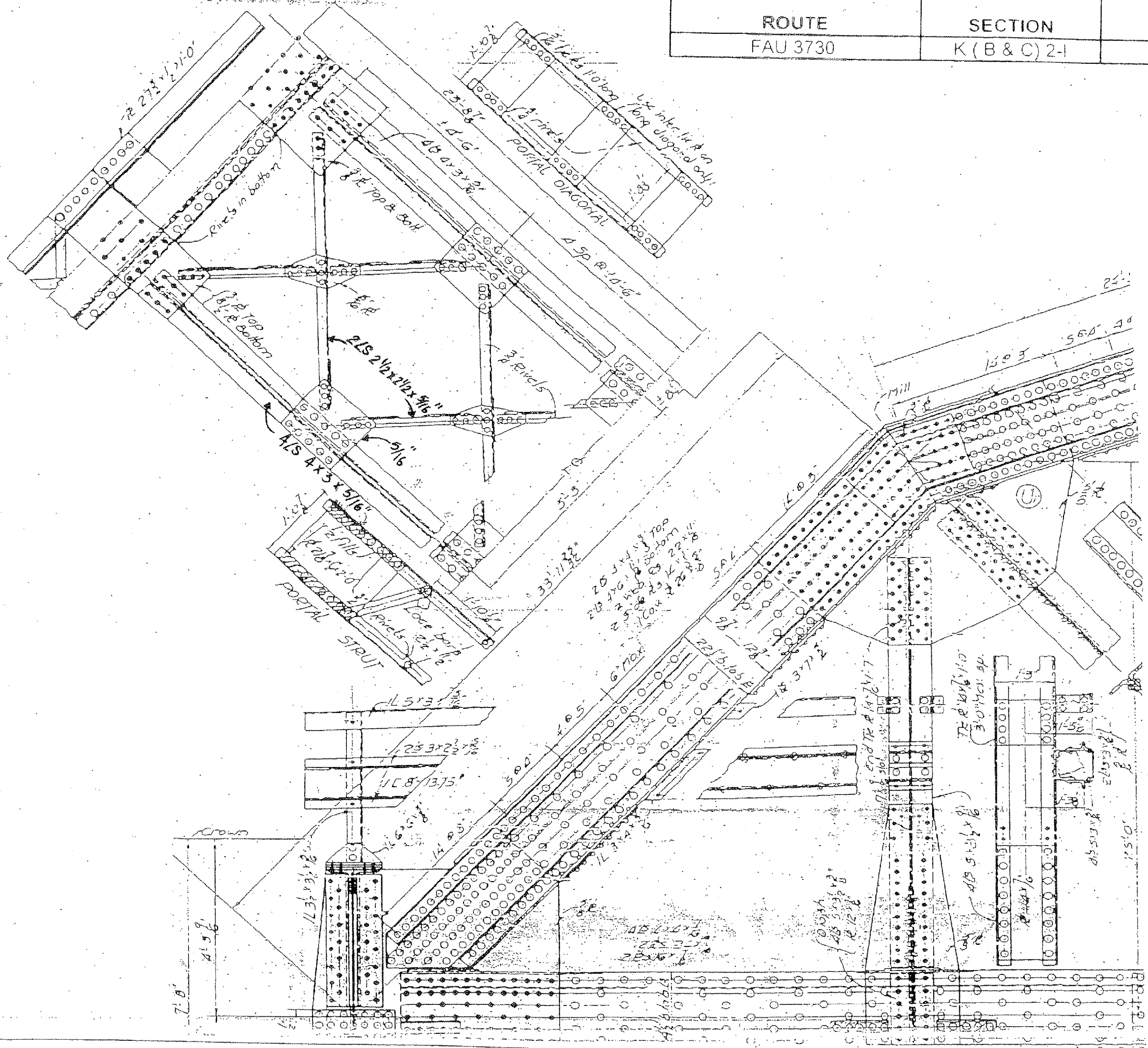
USE EXISTING BOLT HOLE LOCATIONS AS
A TEMPLATE TO FIELD DRILL NEW HOLES.

ILLINOIS DEPARTMENT OF TRANSPORTATION
STRUCTURAL STEEL REPAIR

IL 1 (HALSTED STREET)
OVER LITTLE CALUMET RIVER
SN 016-0193

ROUTE	SECTION	COUNTY	TOTAL SHEETS	SHEET NUMBER
FAU 3730	K (B & C) 2-1	COOK	12	7

Contract 60C27

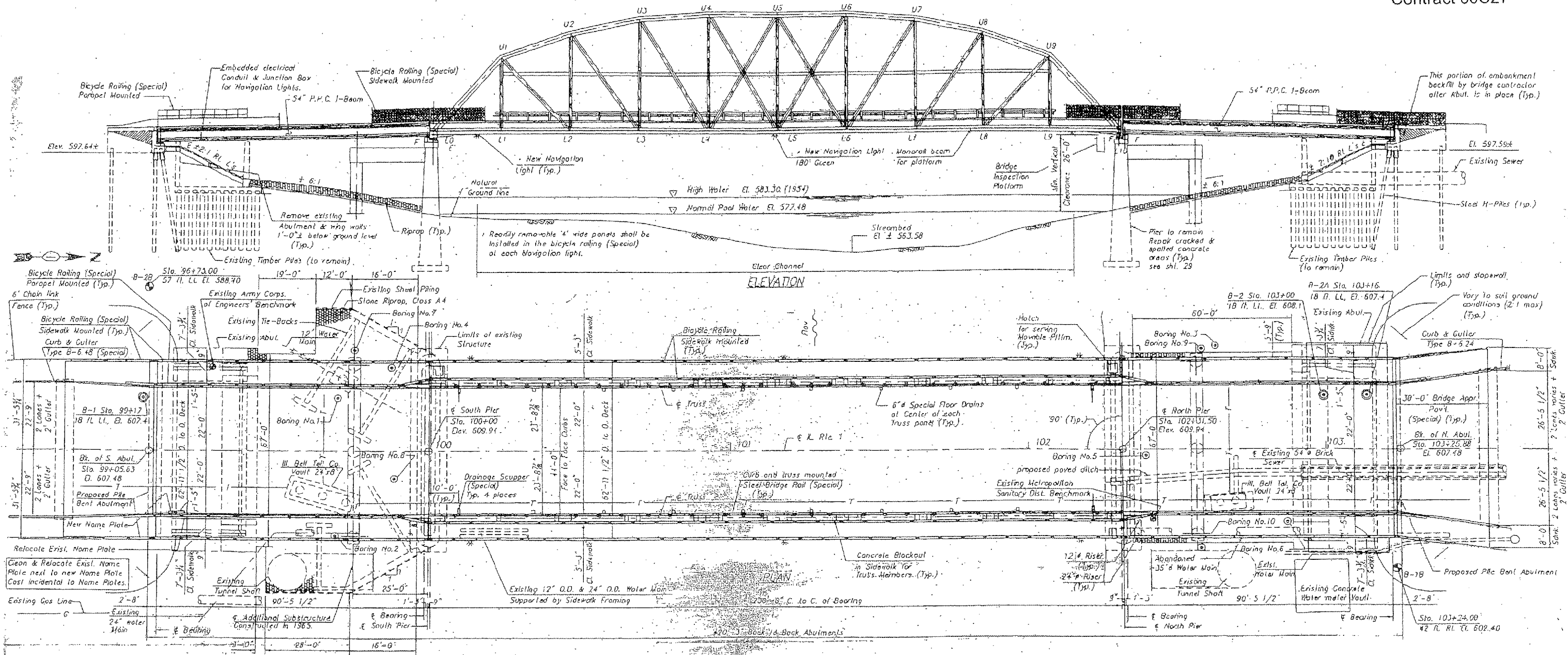


FOR INFORMATION ONLY

ILLINOIS DEPARTMENT OF TRANSPORTATION
PORTAL DETAILS
 IL 1 (HALSTED STREET)
 OVER LITTLE CALUMET RIVER
 SN 016-0193

ROUTE	SECTION	COUNTY	TOTAL SHEETS	SHEET NUMBER
EAU 3730	K (B & C) 2-1	COOK	12	8

Contract 60C27

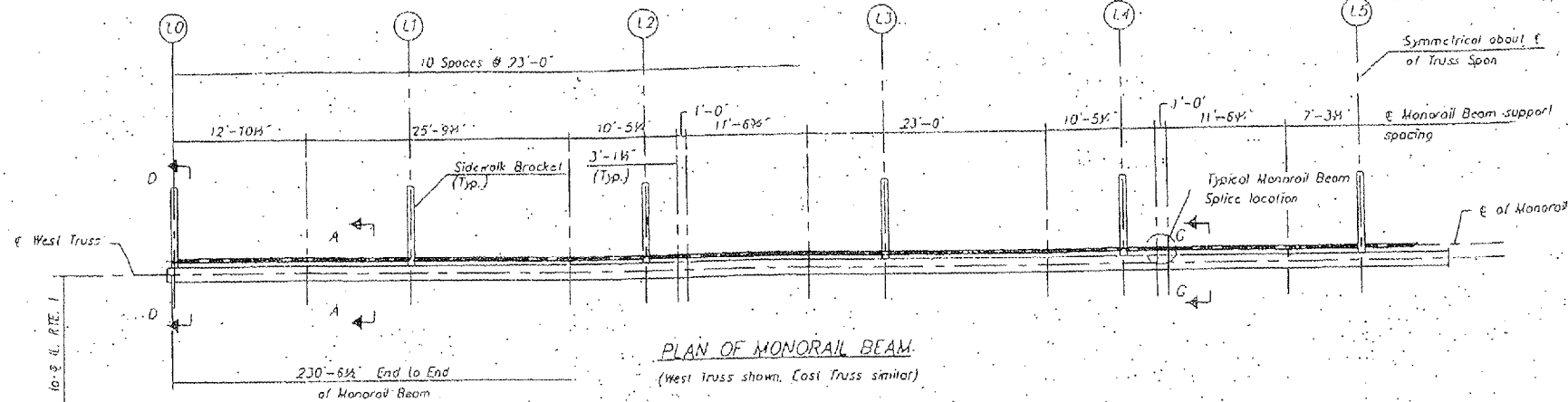


FOR INFORMATION ONLY

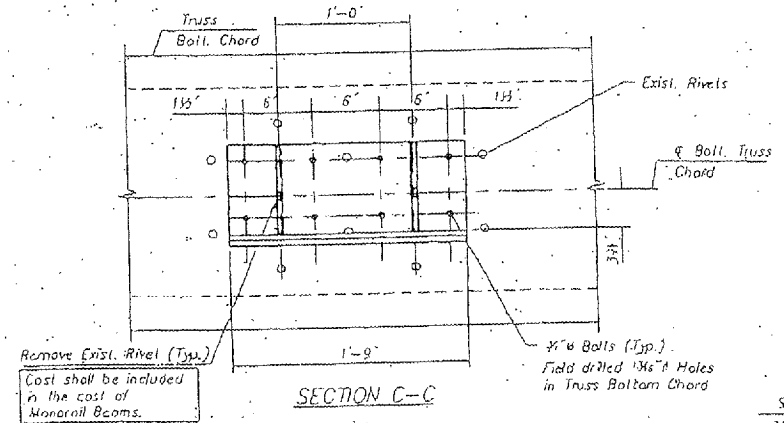
ILLINOIS DEPARTMENT OF TRANSPORTATION
PLAN AND ELEVATIONS
INSPECTION PLATFORM DETAILS
 IL 1 (HALSTED STREET)
 OVER LITTLE CALUMET RIVER
 SN 016-0193

ROUTE	SECTION	COUNTY	TOTAL SHEETS	SHEET NUMBER
EAU 3730	K (B & C) 2-I	COOK	12	10

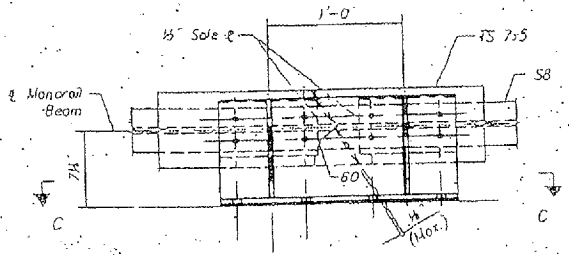
Contract 60C27



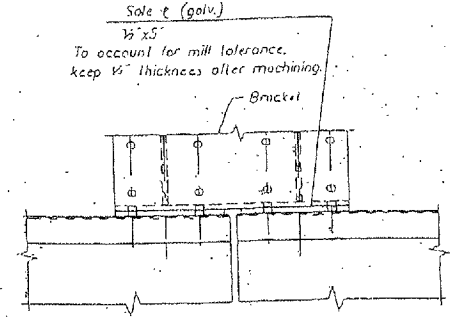
PLAN OF MONORAIL BEAM
(West truss shown, East Truss similar)



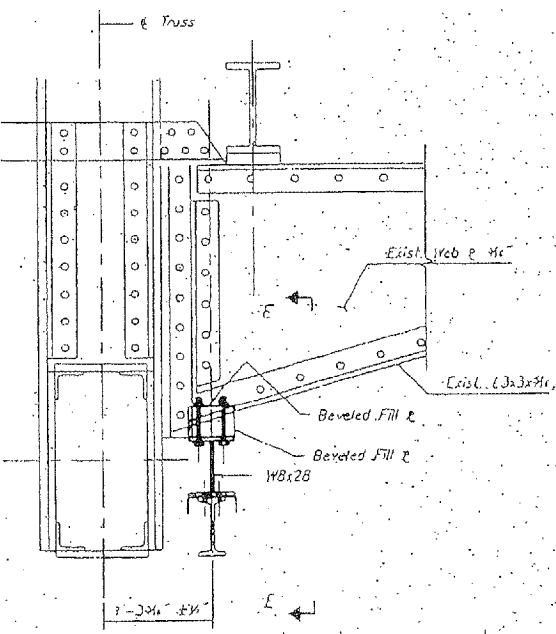
SECTION C-C



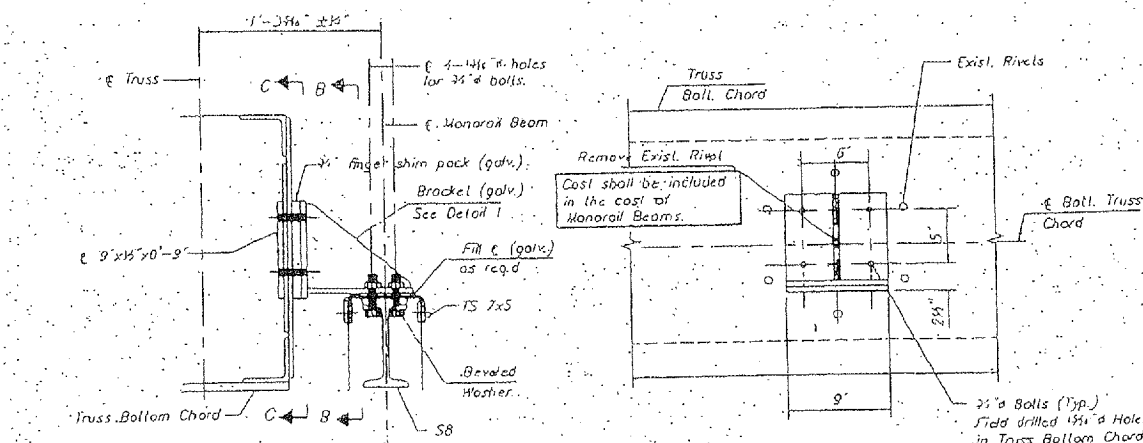
TYPICAL SPLICE DETAIL
(B Required)



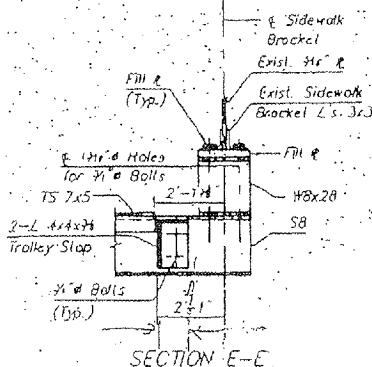
SOLE & DETAIL



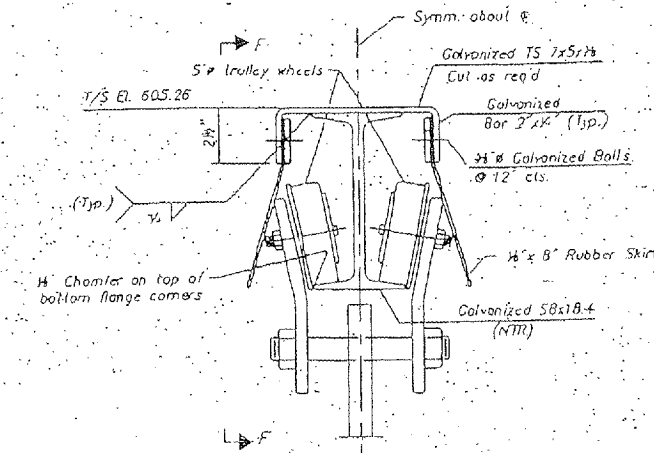
SECTION D-D
(At L0 and L10)



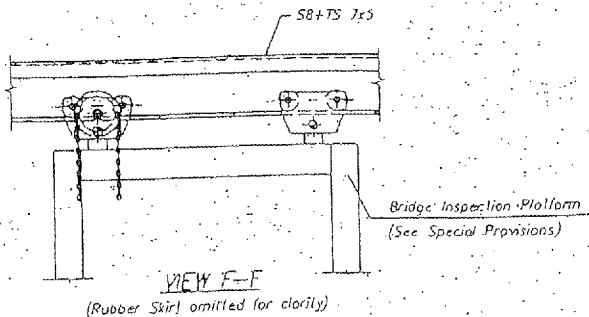
SECTION A-A & SECTION G-G
(20 Required)



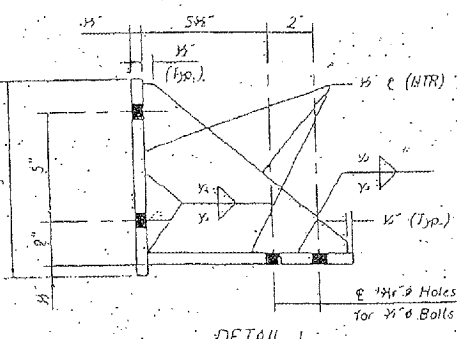
SECTION E-E



TYPICAL CROSS SECTION
OF MONORAIL BEAM



VIEW F-F
(Rubber Skirt omitted for clarity)



DETAIL I

- NOTES:
- No part of Monorail beam assembly shall project below bottom of truss bottom chord.
 - Use 2 hardened washers with oversize holes.
 - "NTR" Denotes plates and section to which supplemental requirements for notch toughness zone 2 are applicable.
 - Trolleys are included as part of Pay Item "Bridge Inspection Platform".
 - All fasteners for monorail beams and supporting brackets shall be galvanized.

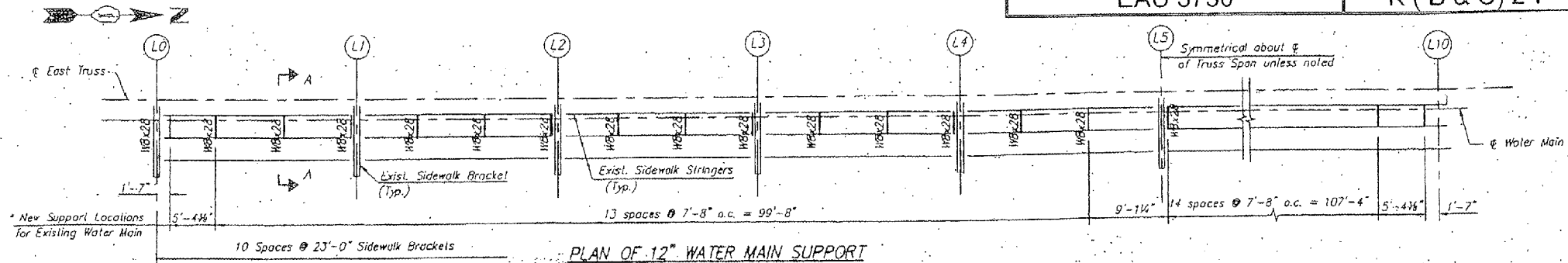
BILL OF MATERIAL

ITEM	QTY	TOTAL
MONORAIL BEAMS	1 SUB	1

FOR INFORMATION ONLY

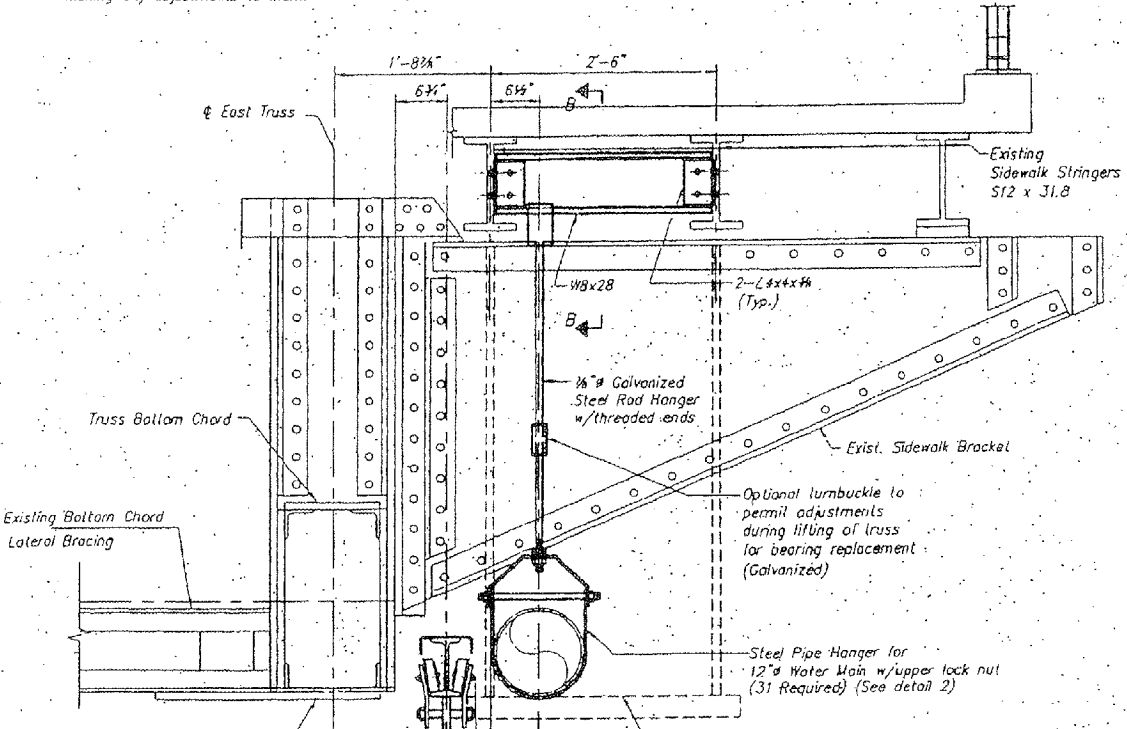
ILLINOIS DEPARTMENT OF TRANSPORTATION
INSPECTION PLATFORM DETAILS
 IL 1 (HALSTED STREET)
 OVER LITTLE CALUMET RIVER
 SN 016-0193

Contract 60C27

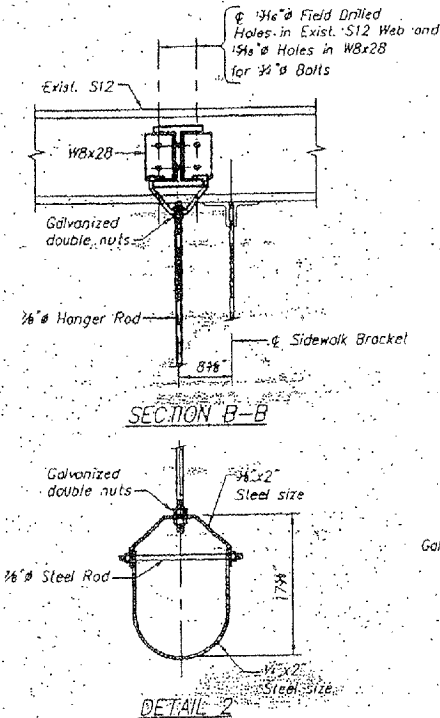


PLAN OF 12" WATER MAIN SUPPORT
(For East Side of Bridge only)

* The Contractor shall check these locations for any interferences and coordinate with Engineer before making any adjustments to them.

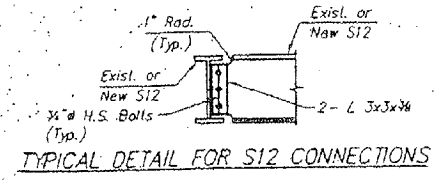


SECTION A-A



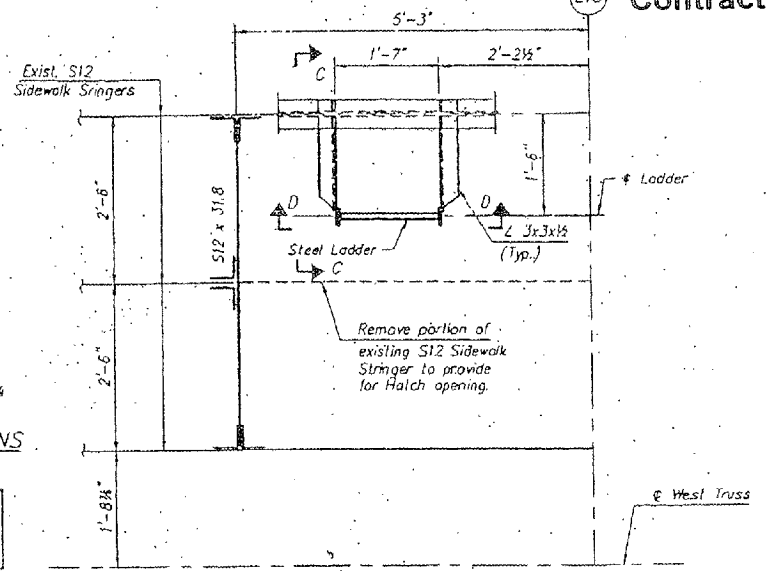
SECTION B-B

DETAIL 2



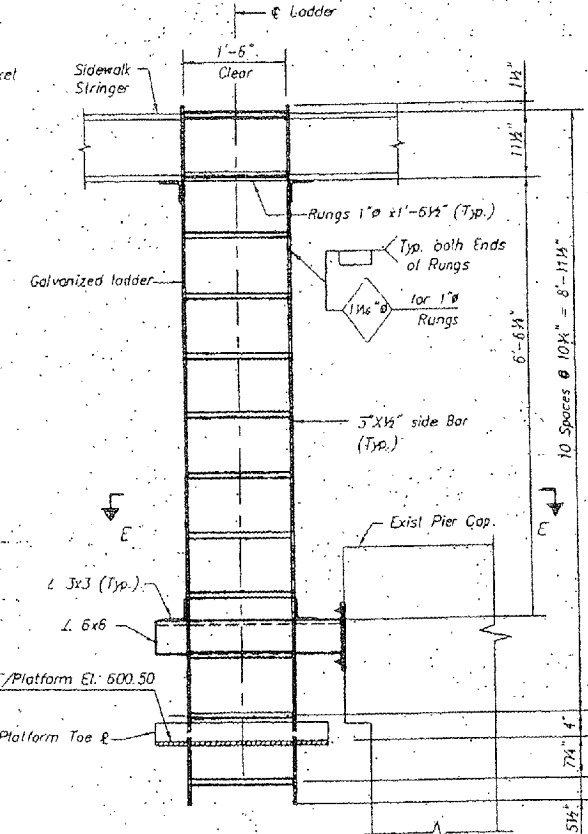
TYPICAL DETAIL FOR S12 CONNECTIONS

The cost of modifying existing sidewalk stringers and furnishing and installing new S12x31.8 for sidewalk hatch opening is included in the cost of furnishing and erecting structural steel.



ARRANGEMENT FOR HATCH OPENING & LADDER SUPPORT

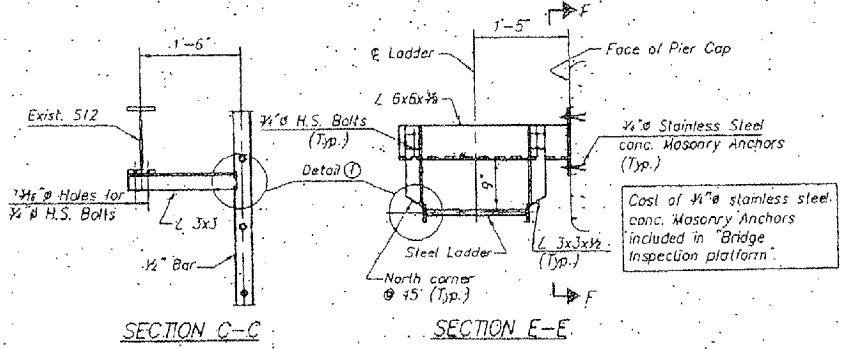
Note: Prior to removing portion of existing stringer, the stringer must be supported until new connections are made. Ladder and its attachment required only of North Pier.



SECTION D-D
LADDER DETAIL

(1 ladder required, only at north Pier)

The cost of furnishing and installing the Platform Access Ladder is included in the cost of the pay item "Bridge Inspection Platform."



SECTION C-C

SECTION E-E

DETAIL 1

Work Sheets 21 and 34 together.

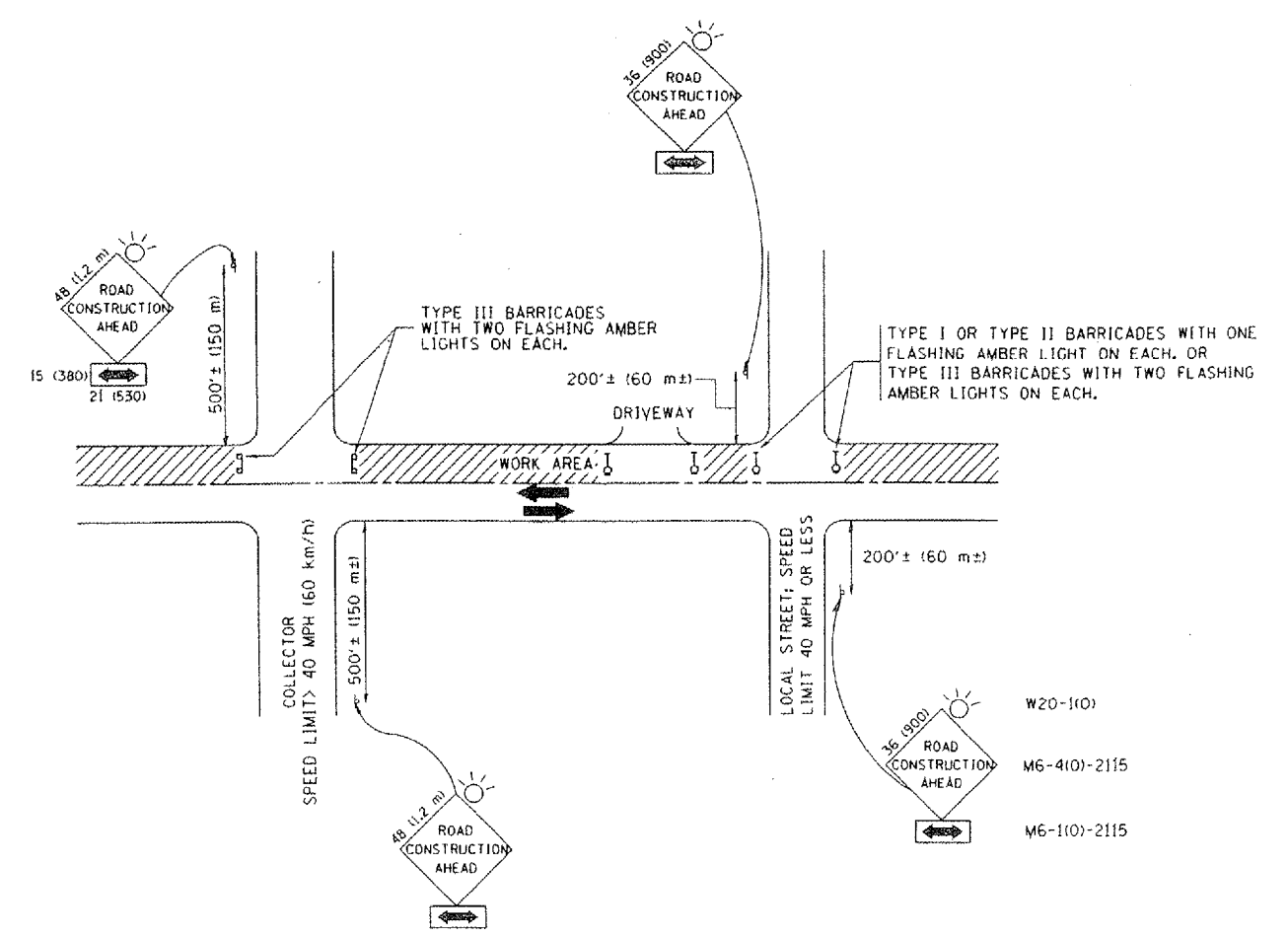
The cost of furnishing and installing new supports for 12" water main including beams, pipe flange, clamps, fasteners and new transverse sidewalk framing members shall be included in cost of pay item "Water Main Hanger Assembly 12".

BILL OF MATERIAL

ITEM	UNIT	TOTAL
Remove Water Main Hanger Assembly 12"	EACH	31
Water Main Hanger Assembly 12"	EACH	31

FOR INFORMATION ONLY

ILLINOIS DEPARTMENT OF TRANSPORTATION
INSPECTION PLATFORM DETAILS
IL 1 (HALSTED STREET)
OVER LITTLE CALUMET RIVER
SN 016-0193



TRAFFIC CONTROL AND PROTECTION FOR SIDE ROADS, INTERSECTIONS, AND DRIVEWAYS

NOTES:

- A. FOR NO LANE RESTRICTION ON THE SIDE ROAD OR DRIVEWAYS
 1. SIDE ROAD WITH A SPEED LIMIT OF 40 MPH (60 km/h) OR LESS AS SHOWN ON THE DRAWING AND AS DIRECTED BY THE ENGINEER:
 - a) ONE ROAD CONSTRUCTION AHEAD SIGN 36 x 36 (900x900) WITH A FLASHER AND FLAG MOUNTED ON IT APPROXIMATELY 200' (60 m) IN ADVANCE OF THE MAIN ROUTE.
 - b) THE CLOSED PORTION OF THE MAIN ROUTE SHALL BE PROTECTED BY BLOCKING WITH TYPE I, TYPE II OR TYPE III BARRICADES, 1/3 OF THE CROSS SECTION OF THE CLOSED PORTION.
 2. SIDE ROAD WITH A SPEED LIMIT GREATER THAN 40 MPH (60 km/h) AS SHOWN ON THE DRAWING AND AS DIRECTED BY THE ENGINEER:
 - a) ONE ROAD CONSTRUCTION AHEAD SIGN 48 x 48 (1.2 m x 1.2 m) WITH A FLASHER MOUNTED ON IT APPROXIMATELY 500' (150 m) IN ADVANCE OF THE MAIN ROUTE.
 - b) THE CLOSED PORTION OF THE MAIN ROUTE SHALL BE PROTECTED BY BLOCKING WITH TYPE III BARRICADES, 1/2 OF THE CROSS SECTION OF THE CLOSED PORTION.
 3. WHEN THE SIDE ROAD LIES BETWEEN THE BEGINNING OF THE MAINLINE SIGNING AND THE WORK ZONE, A SINGLE HEADED ARROW (M6-1) SHALL BE USED IN LIEU OF THE DOUBLE HEADED ARROW (M6-4).
- B. FOR A LANE CLOSURE ON A SIDE ROAD OR DRIVEWAY:

USE APPLICABLE PORTIONS OF THE TYPICAL APPLICATION OF TRAFFIC CONTROL DEVICES (STD. 701501, STD. 701606 OR THE APPROPRIATE STANDARD). THE SPACING OF SIGNS AND BARRICADES SHALL BE ADJUSTED FOR FIELD CONDITIONS AS DIRECTED BY THE ENGINEER. THE DIRECTIONAL ARROW SHALL BE COVERED OR REMOVED WHEN NO LONGER CONSISTENT WITH THE SIDE ROAD LANE CLOSURE.
- C. ADVANCE WARNING SIGNS ARE TO BE OMITTED ON DRIVEWAY UNLESS OTHERWISE NOTED.
- D. THE TRAFFIC CONTROL AND PROTECTION FOR SIDE ROADS, INTERSECTIONS, AND DRIVEWAYS SHALL BE INCIDENTAL TO THE COST OF SPECIFIED TRAFFIC CONTROL STANDARDS OR ITEMS.

All dimensions are in millimeters (inches) unless otherwise shown.

FILE NAME = V:\diststd\22x34\td10.dgn	USER NAME = gajlanabx	DESIGNED - LHA	REVISED - J. OBERLE 10-18-95	STATE OF ILLINOIS DEPARTMENT OF TRANSPORTATION	TRAFFIC CONTROL AND PROTECTION FOR SIDE ROADS, INTERSECTIONS, AND DRIVEWAYS		F.A.W. RTE.	SECTION	COUNTY	TOTAL SHEETS	SHEET NO.
		DRAWN -	REVISED - A. HOUSEH 03-06-96		SCALE: NONE	SHEET NO. 1 OF 1 SHEETS	STA.	TC-10	COOK	12	12
		CHECKED -	REVISED - A. HOUSEH 10-15-96				TO STA.				
		DATE - 06-89	REVISED - T. RAMMACHER 01-06-00								
	PLOT SCALE = 50,000' / IN.						FED. ROAD DIST. NO. 1 ILLINOIS FED. AID PROJECT				
	PLOT DATE = 1/4/2008						CONTRACT NO. 60C27				