

<b>ROUTE</b>	<b>SECTION</b>	<b>COUNTY</b>	<b>TOTAL SHEETS</b>	<b>SHEET NUMBER</b>
VARIOUS	2007-009 GR	VARIOUS	27	4

**SUMMARY OF QUANTITIES**

**CONTRACT: 60C34**

CODE NO	DESCRIPTION	UNIT	URBAN 100% STATE  TOTAL QUANTITIES	CONSTRUCTION TYPE CODE: SFTY - 3N						
				COOK						
				LOC 1 (I-57)	LOC 2 (I-80)	LOC 3 (IL 53)	LOC 4 (I-290)	LOC 5 (Palatine Rd)	LOC 6 (IL 53 Ramp)	LOC 7 (IL 53 Ramp)
63200310	GUARDRAIL REMOVAL	FOOT	230	25	25	25	25	80	25	25
67000400	ENGINEER'S FIELD OFFICE, TYPE A	CAL MO	3	0.43	0.43	0.43	0.43	0.43	0.43	0.42
67100100	MOBILIZATION	L SUM	1	0.15	0.15	0.14	0.14	0.14	0.14	0.14
70102630	TRAFFIC CONTROL AND PROTECTION, STANDARD 701601	L SUM	1	0	0	0	0	1	0	0
X7011015	TRAFFIC CONTROL AND PROTECTION (EXPRESSWAYS)	L SUM	1	0.17	0.17	0.17	0.17	0	0.16	0.16
X0325847	IMPACT ATTENUATORS (FULLY REDIRECTIVE, RESETTABLE) TEST LEVEL 3	EACH	7	1	1	1	1	1	1	1

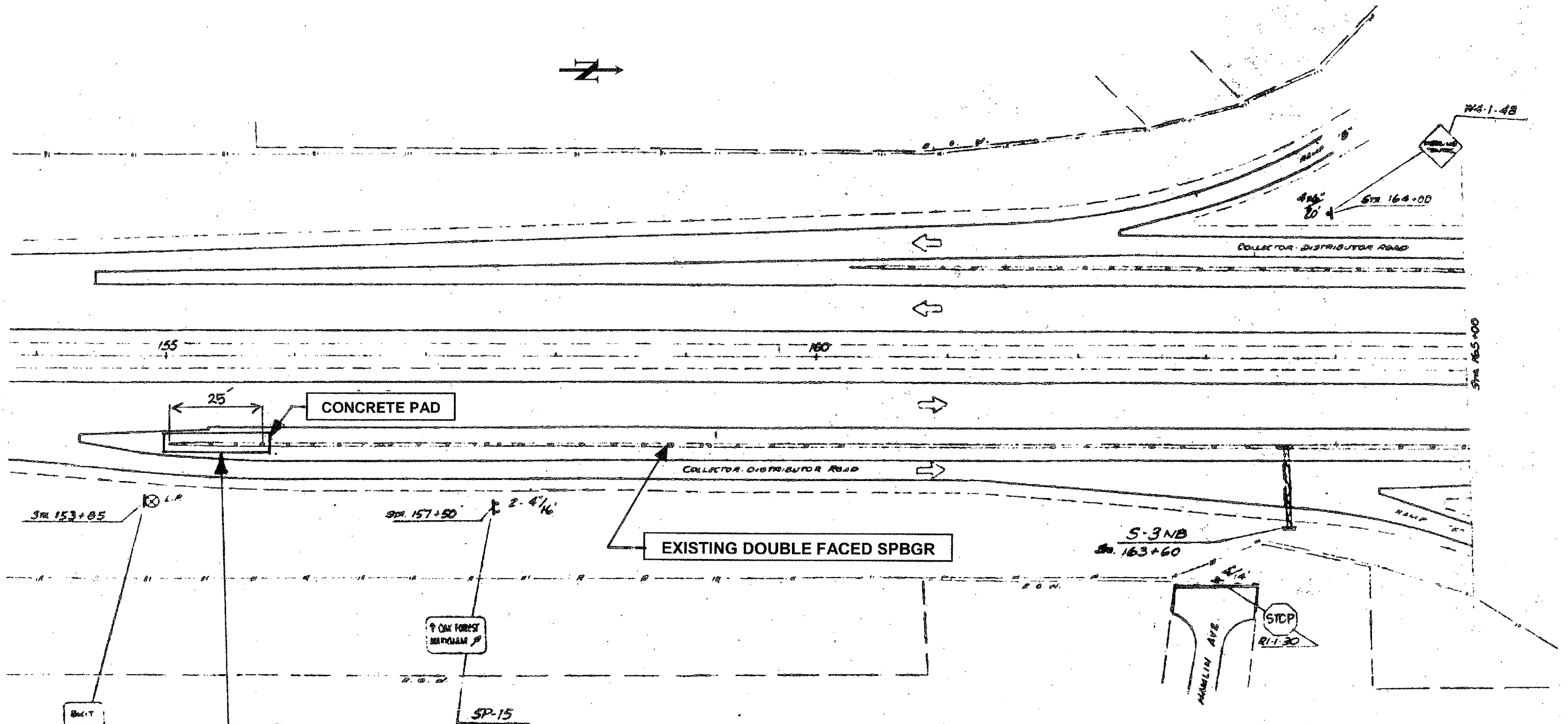
ILLINOIS DEPARTMENT OF TRANSPORTATION

**SUMMARY OF QUANTITIES**

△ Rev. 4-17-08

ROUTE	SECTION	COUNTY	TOTAL SHEETS	SHEET NUMBER
VARIOUS	2007-009 GR	VARIOUS	27	9

Contract 60C34



**REPLACE EXISTING TRAFFIC BARRIER TERMINAL TYPE 3 WITH 'IMPACT ATTENUATOR (FULLY REDIRECTIVE, RESETTABLE) TEST LEVEL 3'**

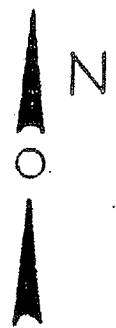
ILLINOIS DEPARTMENT OF TRANSPORTATION  
**REPAIR PLAN**  
**LOCATION: 1**  
**I-57 NB AT 159<sup>TH</sup> ST**

Rev. 4-17-08

SHEET 1 OF 2

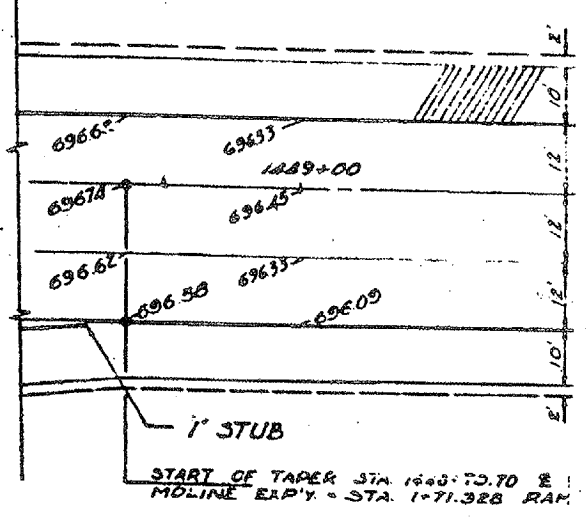
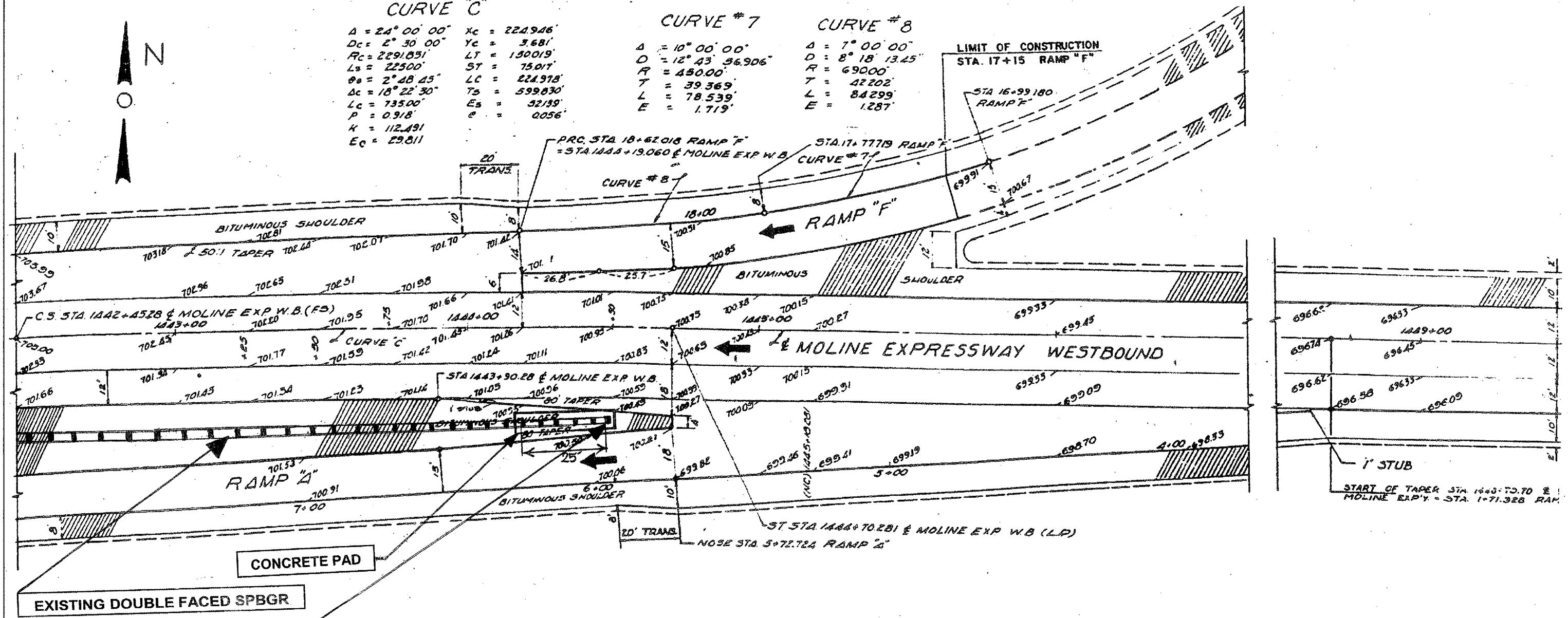
ROUTE	SECTION	COUNTY	TOTAL SHEETS	SHEET NUMBER
VARIOUS	2007-009 GR	VARIOUS	27	11

Contract 60C34



**CURVE "C"**  
 $A = 24^{\circ} 00' 00''$   $X_c = 224.946'$   
 $D_c = 2^{\circ} 30' 00''$   $Y_c = 3.681'$   
 $R_c = 2291.031'$   $L_T = 1500.19'$   
 $L_s = 22500'$   $S_T = 75.017'$   
 $\theta_s = 2^{\circ} 48' 45''$   $L_C = 224.978'$   
 $\Delta c = 18^{\circ} 22' 30''$   $T_s = 599.830'$   
 $L_c = 735.00'$   $E_s = 52.139'$   
 $P = 0.918'$   $e = 0.056'$   
 $K = 112.491$   
 $E_c = 29.811'$

**CURVE # 7**      **CURVE # 8**  
 $\Delta = 10^{\circ} 00' 00''$        $\Delta = 7^{\circ} 00' 00''$   
 $D = 12^{\circ} 43' 56.906''$        $D = 8^{\circ} 18' 13.25''$   
 $R = 450.00'$        $R = 690.00'$   
 $T = 39.369'$        $T = 42.202'$   
 $L = 78.539'$        $L = 84.299'$   
 $E = 1.719'$        $E = 1.287'$



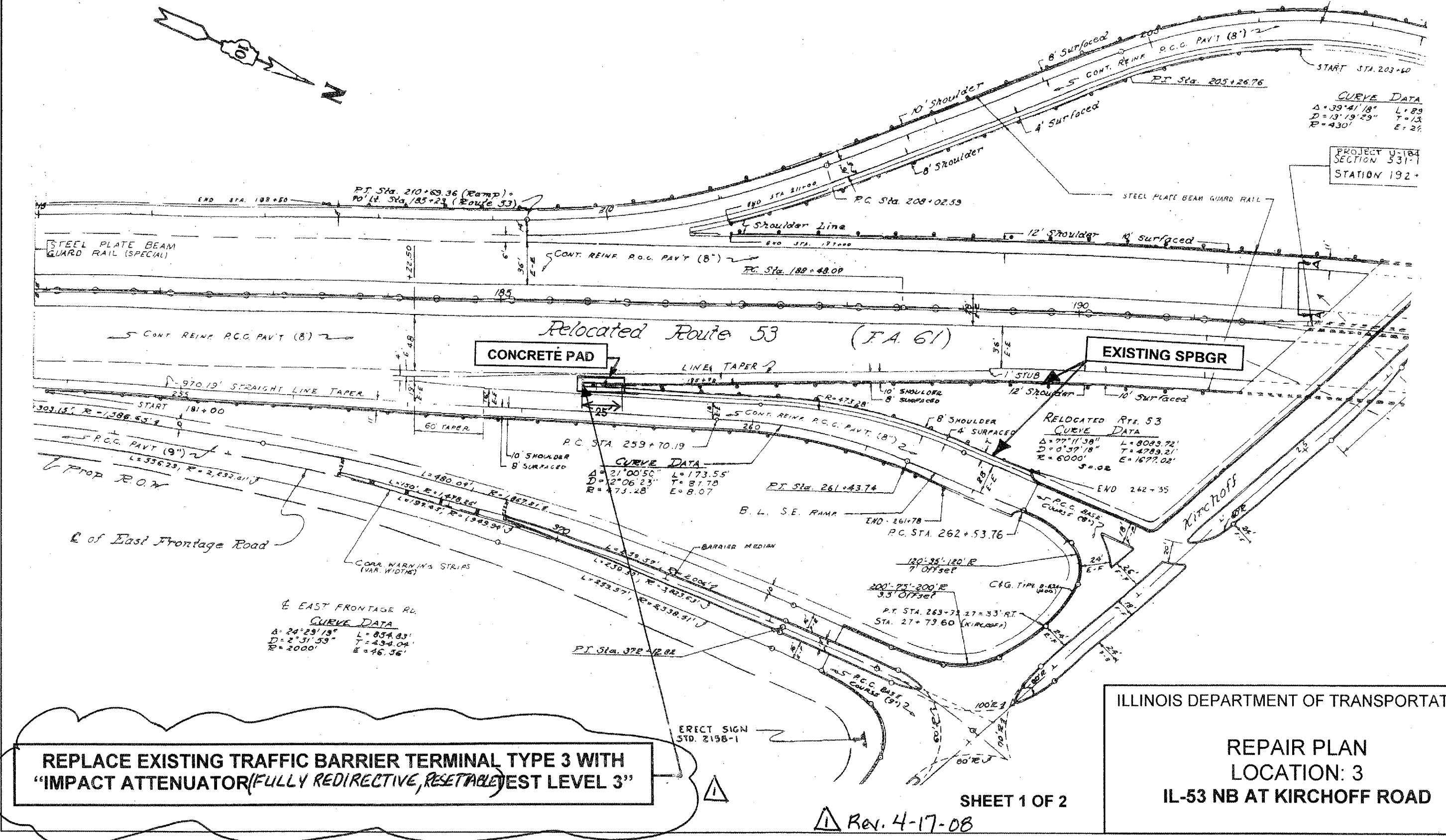
**REPLACE EXISTING TRAFFIC BARRIER TERMINAL TYPE 3 WITH "IMPACT ATTENUATOR (FULLY REDIRECTIVE, RESETTABLE) EST LEVEL 3"**

ILLINOIS DEPARTMENT OF TRANSPORTATION  
 REPAIR PLAN  
 LOCATION: 2  
 I-80 WB AT I-57 SB

Rev. 4-17-08 SHEET 1 OF 2

ROUTE VARIOUS	SECTION 2007-009 GR	COUNTY VARIOUS	TOTAL SHEETS 27	SHEET NUMBER 13
------------------	------------------------	-------------------	-----------------------	-----------------------

Contract 60C34



REPLACE EXISTING TRAFFIC BARRIER TERMINAL TYPE 3 WITH  
 "IMPACT ATTENUATOR (FULLY REDIRECTIVE, RESETABLE) TEST LEVEL 3"

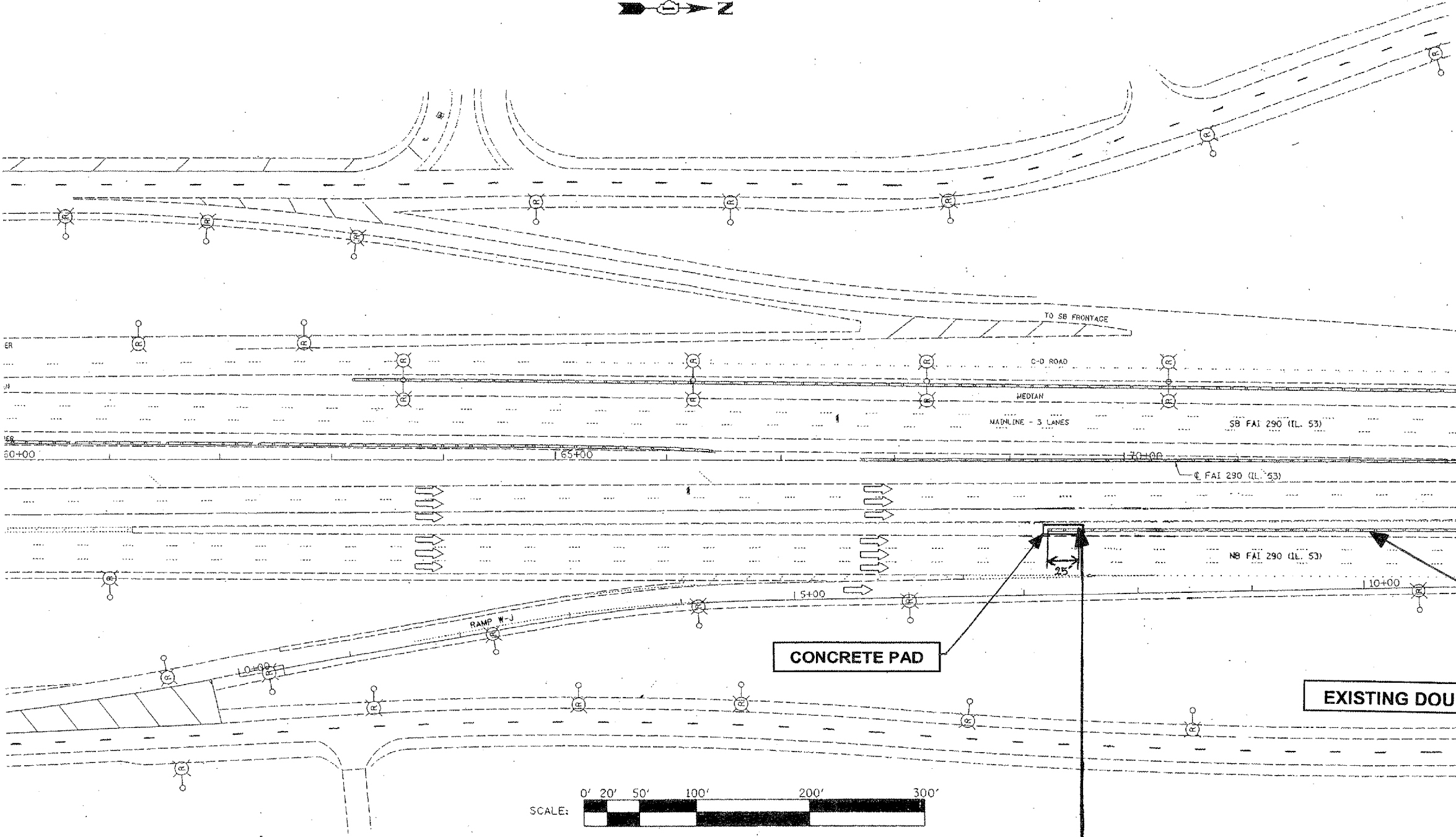
ILLINOIS DEPARTMENT OF TRANSPORTATION  
 REPAIR PLAN  
 LOCATION: 3  
 IL-53 NB AT KIRCHOFF ROAD

SHEET 1 OF 2

Rev. 4-17-08

ROUTE VARIOUS	SECTION 2007-009 GR	COUNTY VARIOUS	TOTAL SHEETS 27	SHEET NUMBER 15
------------------	------------------------	-------------------	-----------------------	-----------------------

Contract 60C34



**REPLACE EXISTING TRAFFIC BARRIER TERMINAL TYPE 3 WITH  
"IMPACT ATTENUATOR (FULLY REDIRECTIVE, RESETTABLE) TEST LEVEL 3"**

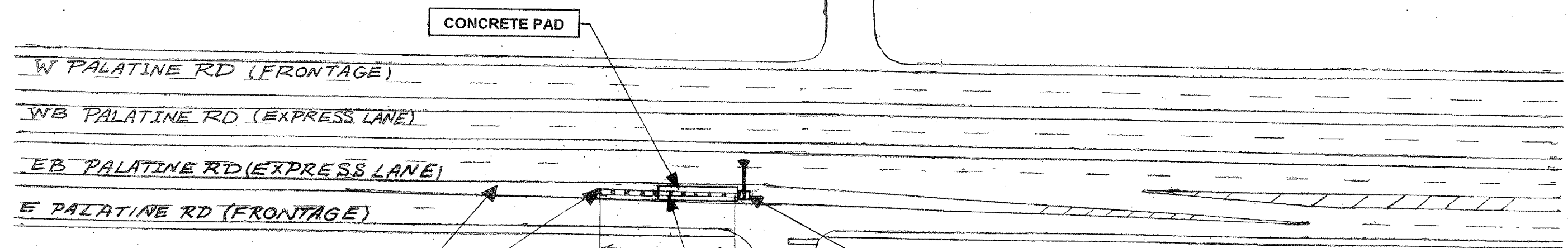
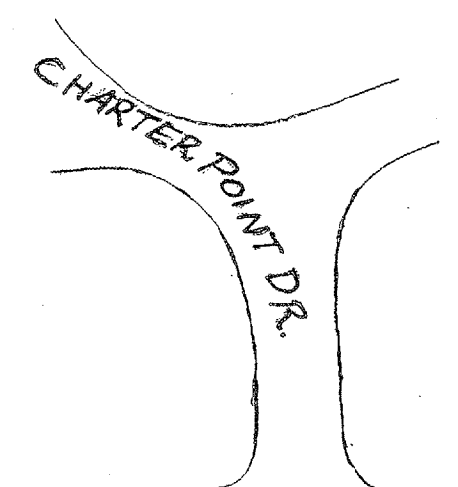
ILLINOIS DEPARTMENT OF TRANSPORTATION  
  
REPAIR PLAN  
LOCATION: 4  
I-290 WB AT SPLIT TO I-90 & IL-62

SHEET 1 OF 2

Rev. 4-17-08

ROUTE	SECTION	COUNTY	TOTAL SHEETS	SHEET NUMBER
VARIOUS	2007-009 GR	VARIOUS	27	17

Contract 60C34



MEDIAN

EXISTING DOUBLE FACED SPBGR

SIGN WITH FOUNDATION

N DALE AVE.

80'

REPLACE EXISTING TRAFFIC BARRIER TERMINAL TYPE 3 WITH "IMPACT ATTENUATOR (FULLY REDIRECTIVE, RESETTABLE) TEST LEVEL 3"

ILLINOIS DEPARTMENT OF TRANSPORTATION

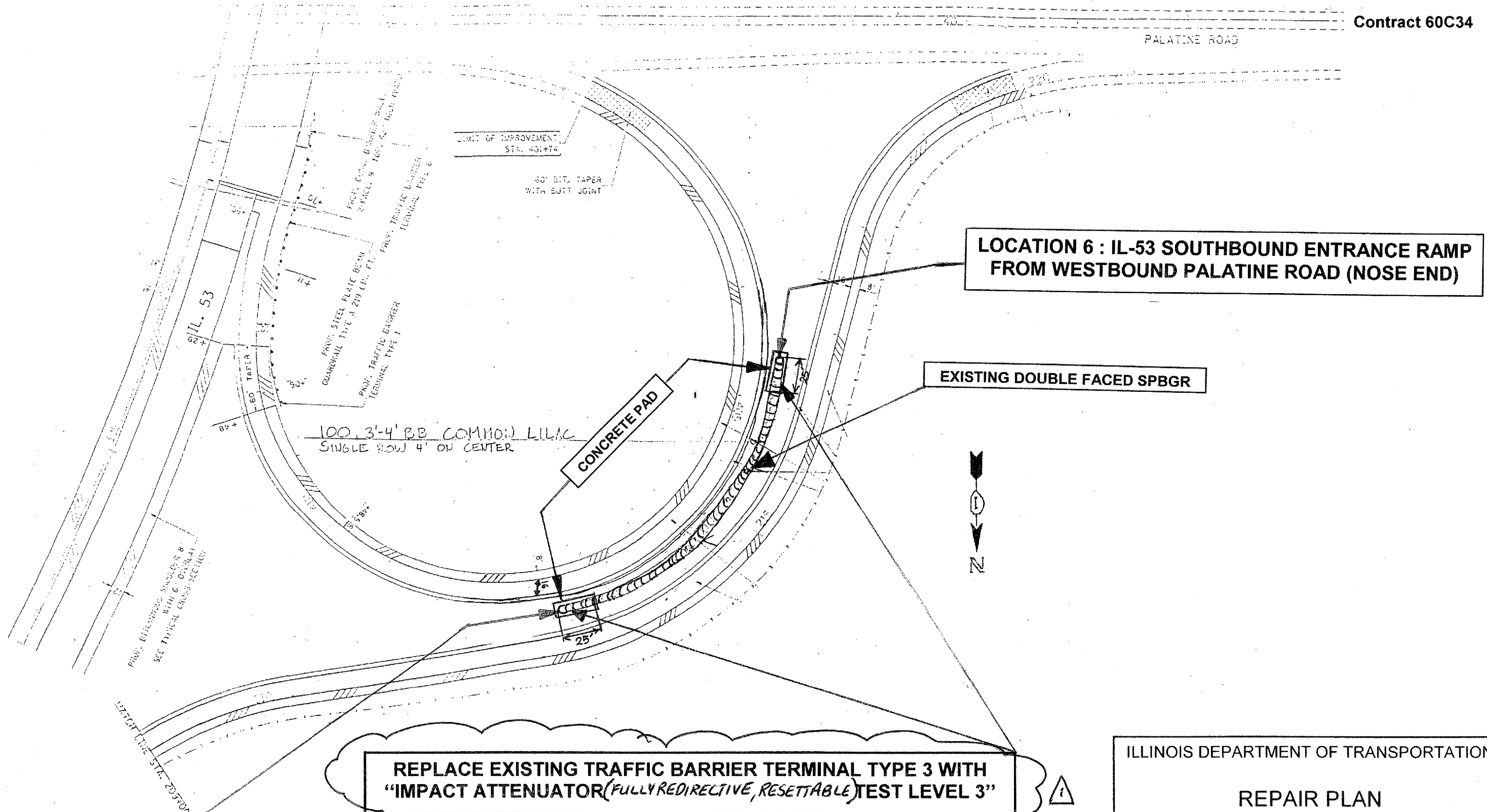
REPAIR PLAN  
LOCATION: 5  
PALATINE RD EB AT SIGN TRUSS FOR  
SCHOENBECK RD

Rev. 4-17-08 SHEET 1 OF 2

ROUTE	SECTION	COUNTY	TOTAL SHEETS	SHEET NUMBER
VARIOUS	2007-009 GR	VARIOUS	27	19

Contract 60C34

PALATINE ROAD



**LOCATION 6 : IL-53 SOUTHBOUND ENTRANCE RAMP FROM WESTBOUND PALATINE ROAD (NOSE END)**

**EXISTING DOUBLE FACED SPBGR**

**REPLACE EXISTING TRAFFIC BARRIER TERMINAL TYPE 3 WITH "IMPACT ATTENUATOR (FULLY REDIRECTIVE, RESETTABLE) TEST LEVEL 3"**

**LOCATION 7 : IL-53 SOUTHBOUND ENTRANCE RAMP FROM WESTBOUND PALATINE ROAD (EXIT END)**

ILLINOIS DEPARTMENT OF TRANSPORTATION  
 REPAIR PLAN  
 LOCATIONS: 6 AND 7  
 IL-53 SB AT WB PALATINE RD

SHEET 1 OF 2

Rev. 4-17-08