

ROUTE	SECTION	COUNTY	TOTAL SHEETS	SHEET NUMBER
VARIOUS	2007-009 GR	COOK	27	1

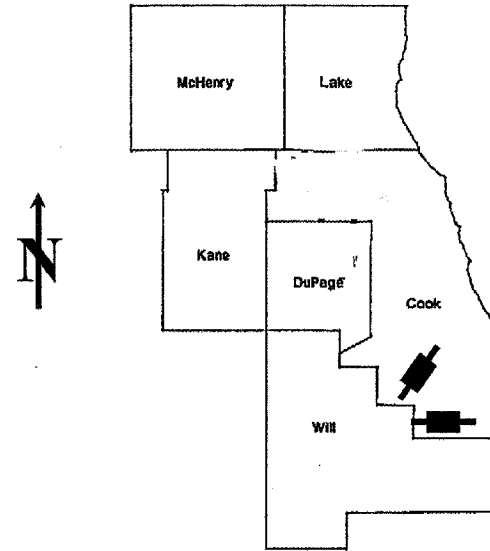
FOR INDEX OF SHEETS SEE SHEET 2

CONTRACT NO. 60C34

STATE OF ILLINOIS
DEPARTMENT OF TRANSPORTATION
DIVISION OF HIGHWAYS
DISTRICT ONE
PROPOSED HIGHWAY PLANS

D-91-203-07

VARIOUS ROUTES
 VARIOUS LOCATIONS
 SECTION 2007-009 GR
UPGRADE GUARDRAIL TYPE 3 TERMINAL SECTIONS
 COOK COUNTY
 C-91-203-07



LOCATION OF IMPROVEMENT INDICATED THUS: 

IMPROVEMENTS ARE LOCATED IN THE CITIES OF MARKHAM, COUNTRY CLUB HILLS, ROLLING MEADOWS AND PROSPECT HEIGHTS AND IN THE VILLAGES OF SCHAUMBURG, PALATINE

NOTE: WHEREVER IN THESE PLANS "VARIOUS COUNTIES" IS REFERRED TO IT SHALL MEAN "COOK CO."

STATE OF ILLINOIS
DEPARTMENT OF TRANSPORTATION
DIVISION OF HIGHWAYS

SUBMITTED: FEBRUARY 22, 2008

Diane M. O'Keefe
 DEPUTY DIRECTOR OF HIGHWAYS, REGION ENGINEER

March 21, 2008
Eric E. Hamm
 INTERIM ENGINEER OF DESIGN AND ENVIRONMENT

March 21, 2008
Christine M. Reed
 DIRECTOR OF HIGHWAYS, CHIEF ENGINEER

PRINTED BY THE AUTHORITY
OF THE STATE OF ILLINOIS

J.U.L.I.E.: JOINT UTILITY LOCATION
 INFORMATION FOR EXCAVATION
 (800) 892-0123 OR 811

DISTRICT ONE BUREAU OF DESIGN
 DESIGN ENGINEER: K. ENG/R. BORO (847) 705-4178

CONTRACT NO. 60C34

Rev 1

ROUTE	SECTION	COUNTY	TOTAL SHEETS	SHEET NUMBER
VARIOUS	2007-009 GR	VARIOUS	27	2

Contract 60C34

INDEX OF SHEETS

SHEET NO DESCRIPTION

1	TITLE SHEET
2	INDEX OF SHEETS AND STATE STANDARDS
3	GENERAL NOTES
4	SUMMARY OF QUANTITIES
5 - 8	LOCATION MAPS
9 - 10	REPAIR PLANS (LOCATION 1 – I-57 @ 159 TH ST)
11 - 12	REPAIR PLANS (LOCATION 2 – I-80 @ I-57)
13 - 14	REPAIR PLANS (LOCATION 3 – IL 53 @ KIRCHOFF)
15 - 16	REPAIR PLANS (LOCATION 4 – I-290 @ IL 62)
17 - 18	REPAIR PLANS (LOCATION 5 – PALATINE RD @ SCHOENBECK RD)
19 - 20	REPAIR PLANS (LOCATION 6 AND 7 – IL 53 @ PALATINE RD))
21 - 22	TRAFFIC BARRIER TERMINAL TYPE 3, 3A & 3B
23	TRAFFIC CONTROL & PROTECTION FOR SIDE ROADS, INTERSECTIONS & DRIVEWAYS (TC-10)
24	TRAFFIC CONTROL & PROTECTION AT TURN BAYS (TO REMAIN OPEN TO TRAFFIC)(TC-14)
25	TRAFFIC CONTROL DETAILS FOR FREEWAY SHOULDER CLOSURES PARTIAL RAMP CLOSURES (TC-17)
26	ENTRANCE AND EXIT RAMP CLOSURE DETAILS (TC-8)
27	TRAFFIC CONTROL DETAILS FOR SINGLE & MULTI-LANE WEAVE (TC-9)

STATE STANDARDS

<u>STD NO</u>	<u>DESCRIPTION</u>
701006-02	2L, 2W, OFF-ROAD OPERATIONS, 15' TO 24" FROM PAVEMENT EDGE
701101-01	MULTI-LANE OFF-ROAD OPERATIONS
701301-02	LANE CLOSURE 2L, 2W SHORT TIME OPERATIONS
701400-02	APPROACH TO LANE CLOSURE, FREEWAY/EXPRESSWAY
701401-04	LANE CLOSURE, FREEWAY/EXPRESSWAY
701411-04	LANE CLOSURE, MULTILANE, AT ENTRANCE OR EXIT RAMP, FOR SPEEDS ≥ 45MPH
701446	TWO LANE CLOSURE, FREEWAY/EXPRESSWAY
701601-05	URBAN LANE CLOSURE, MULTILANE, 1W OR 2W WITH NONTRAVERSABLE MEDIAN
701901	TRAFFIC CONTROL DEVICES

ILLINOIS DEPARTMENT OF TRANSPORTATION

INDEX OF SHEETS
STATE STANDARDS

ROUTE	SECTION	COUNTY	TOTAL SHEETS	SHEET NUMBER
VARIOUS	2007-009 GR	VARIOUS	27	3

Contract 60C34

GENERAL NOTES

BEFORE STARTING ANY EXCAVATION, THE CONTRACTOR SHALL CALL "J.U.L.I.E." AT (800) 892-0123 OR 811. FOR FIELD LOCATIONS OF BURIED ELECTRIC, TELEPHONE AND GAS UTILITIES. 48 HOUR NOTIFICATION IS REQUIRED.

IT SHALL BE THE CONTRACTOR'S RESPONSIBILITY TO VERIFY ALL DIMENSIONS & CONDITIONS EXISTING IN THE FIELD PRIOR TO CONSTRUCTION & ORDERING OF MATERIALS.

THE CONTRACTOR WILL NOT BE ALLOWED TO SET UP A YARD OR FIELD OFFICE ON STATE PROPERTY WITHOUT WRITTEN PERMISSION FROM THE DEPARTMENT.

THE CONTRACTOR SHALL CONTACT THE DISTRICT ONE TRAFFIC CONTROL SUPERVISOR AT (847) 705-4470 FOR ARTERIALS OR (847)705-4151 FOR EXPRESSWAYS. A MINIMUM OF 72 HOURS IN ADVANCE OF BEGINNING WORK.

THE CONTRACTOR SHALL COORDINATE CONSTRUCTION ACTIVITIES WITH UTILITY COMPANIES.

THE REMOVAL OF GUARDRAIL TERMINAL SECTIONS SHALL BE INCLUDED IN THE UNIT PRICE PER FOOT FOR "GUARDRAIL REMOVAL".

WHEN ARTIFICIAL LIGHTING IS UTILIZED IN NIGHT OPERATIONS, THE CONTRACTOR SHALL EXERCISE THE UTMOST PRECAUTIONS IN PREVENTING ADVERSE VISIBILITY TO THE MOTORING PUBLIC AND ADJOINING RESIDENTIAL AREAS.

THE CONTRACTOR SHALL BE REQUIRED TO PROVIDE ACCESS TO ABUTTING PROPERTY AT ALL TIMES DURING THE CONSTRUCTION OF THIS PROJECT.

DO NOT SCALE PLANS FOR CONSTRUCTION DIMENSIONS.

THE "ADVANCE WARNING SIGN DETAIL FOR ARTERIAL TRAFFIC" LOCATED IN THE SPECIAL PROVISIONS FOR "TEMPORARY INFORMATION SIGNING FOR LANE CLOSURES" IS APPLICABLE ONLY TO ARTERIAL ROADS AND SHALL NOT BE APPLIED TO EXPRESSWAYS.

THE CONTRACTOR SHALL SALVAGE AND RETURN THE EXISTING TYPE 3 GUARDRAIL TERMINAL SECTIONS TO:

DISTRICT BRIDGE OFFICE
1101 BIESTERFIELD RD.
ELK GROVE VILLAGE, IL 60007

THIS WORK SHALL INCLUDE REMOVING, TRANSPORTING AND UNLOADING THE EXISTING GUARDRAIL TERMINAL SECTION TO THE ABOVE YARD WHICH COST IS INCLUDED IN THE COST OF "GUARDRAIL REMOVAL".

THE CONTRACTOR MAY CHOOSE ANY OF THE APPROVED IMPACT ATTENUATORS BUT THE MANUFACTURER CHOSEN SHALL BE THE SAME FOR ALL LOCATIONS.

ILLINOIS DEPARTMENT OF TRANSPORTATION

GENERAL NOTES

ROUTE	SECTION	COUNTY	TOTAL SHEETS	SHEET NUMBER
VARIOUS	2007-009 GR	VARIOUS	27	4

SUMMARY OF QUANTITIES

CONTRACT: 60C34

CODE NO	DESCRIPTION	UNIT	URBAN 100% STATE TOTAL QUANTITIES	CONSTRUCTION TYPE CODE: SFTY - 3N						
				BOOK						
				LOC 1 (I-57)	LOC 2 (I-80)	LOC 3 (IL 53)	LOC 4 (I-290)	LOC 5 (Palatine Rd)	LOC 6 (IL 53 Ramp)	LOC 7 (IL 53 Ramp)
63200310	GUARDRAIL REMOVAL	FOOT	230	25	25	25	25	80	25	25
67000400	ENGINEER'S FIELD OFFICE, TYPE A	CAL MO	3	0.43	0.43	0.43	0.43	0.43	0.43	0.42
67100100	MOBILIZATION	L SUM	1	0.15	0.15	0.14	0.14	0.14	0.14	0.14
70102630	TRAFFIC CONTROL AND PROTECTION, STANDARD 701601	L SUM	1	0	0	0	0	1	0	0
X7011015	TRAFFIC CONTROL AND PROTECTION (EXPRESSWAYS)	L SUM	1	0.17	0.17	0.17	0.17	0	0.16	0.16
Z0030070	IMPACT ATTENUATORS (SEVERE USE,NARROW), TEST LEVEL 3	EACH	7	1	1	1	1	1	1	1

ILLINOIS DEPARTMENT OF TRANSPORTATION

SUMMARY OF QUANTITIES

ROUTE	SECTION	COUNTY	TOTAL SHEETS	SHEET NUMBER
VARIOUS	2007-009 GR	VARIOUS	27	5

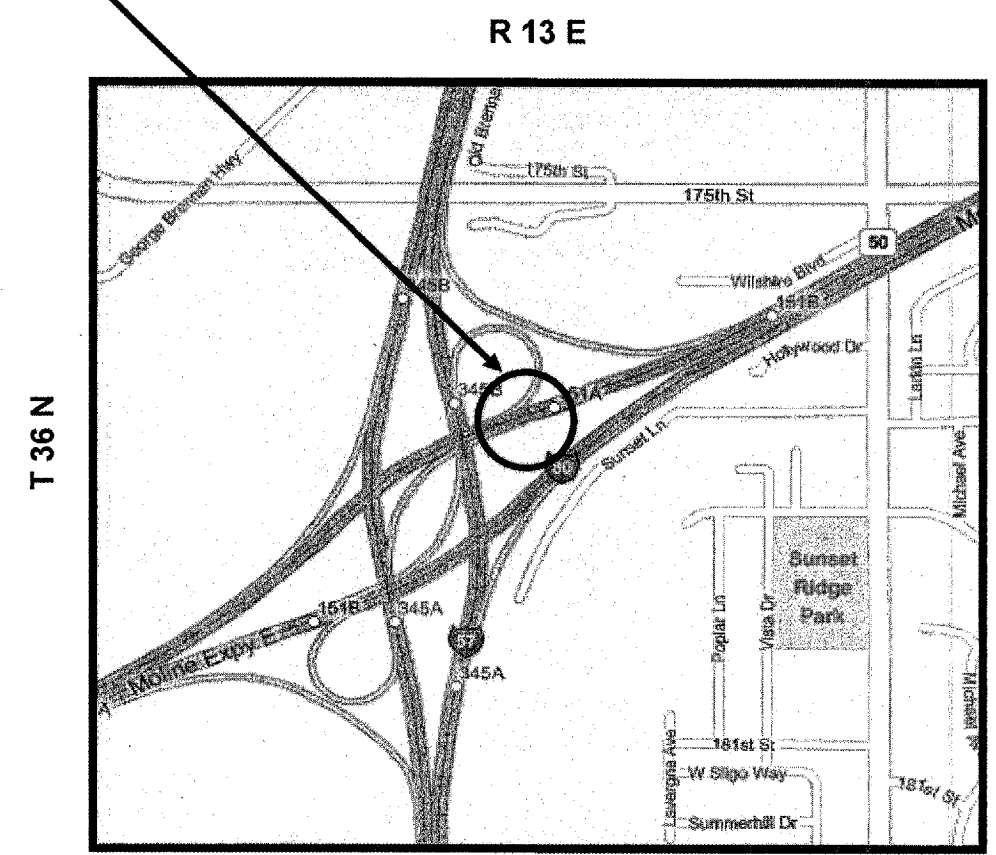
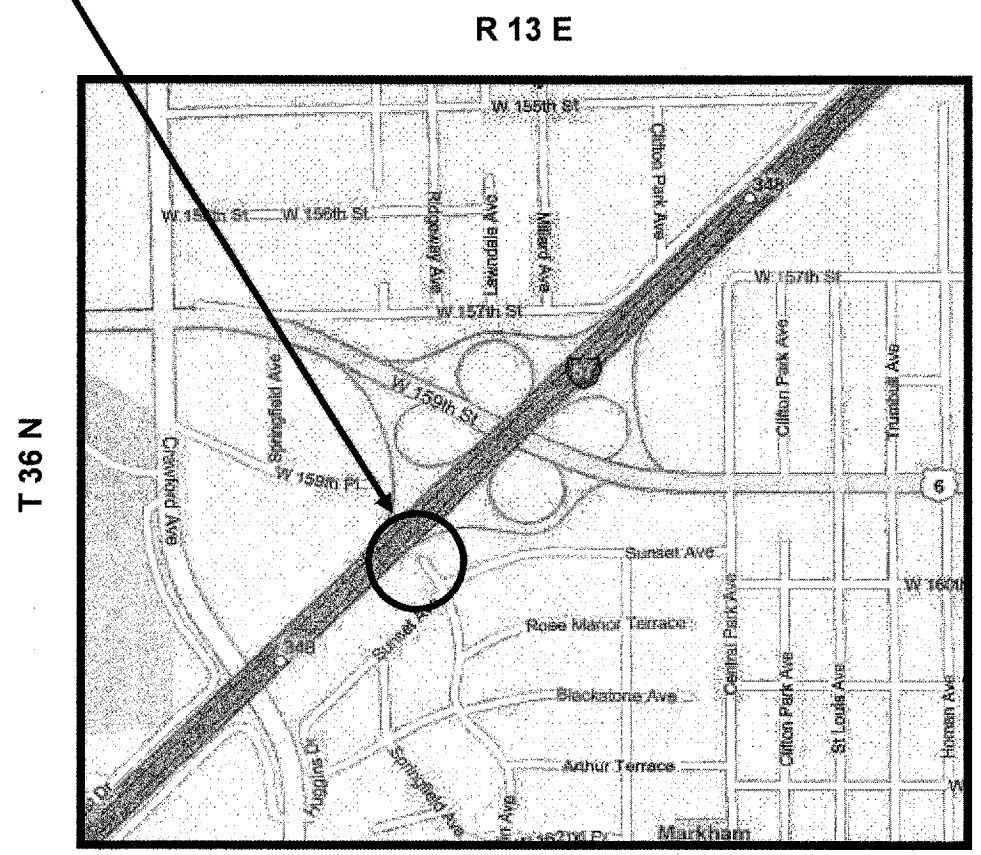
Contract 60C34

IMPROVEMENT IS LOCATED IN THE CITY OF MARKHAM

IMPROVEMENT IS LOCATED IN THE CITY OF COUNTRY CLUB HILLS

LOCATION 1 : I-57 NORTHBOUND AT EXIT RAMP TO 159TH STREET (U.S. 6)

LOCATION 2 : I-80 WESTBOUND AT EXIT RAMP TO I-57 SOUTHBOUND



**BREMEN TOWNSHIP
COOK COUNTY**

**BREMEN TOWNSHIP
COOK COUNTY**

TRAFFIC DATA:
I-57 NORTHBOUND: SPEED LIMIT = 55 MPH
2006 ADT = 103,500

TRAFFIC DATA:
I-80 WESTBOUND: SPEED LIMIT = 55 MPH
2006 ADT = 10,500

ILLINOIS DEPARTMENT OF TRANSPORTATION

**LOCATION MAPS
LOCATIONS: 1 AND 2**

ROUTE	SECTION	COUNTY	TOTAL SHEETS	SHEET NUMBER
VARIOUS	2007-009 GR	VARIOUS	27	6

Contract 60C34

IMPROVEMENT IS LOCATED IN THE CITY OF ROLLING MEADOWS

IMPROVEMENT IS LOCATED IN THE VILLAGE OF SCHAUMBURG

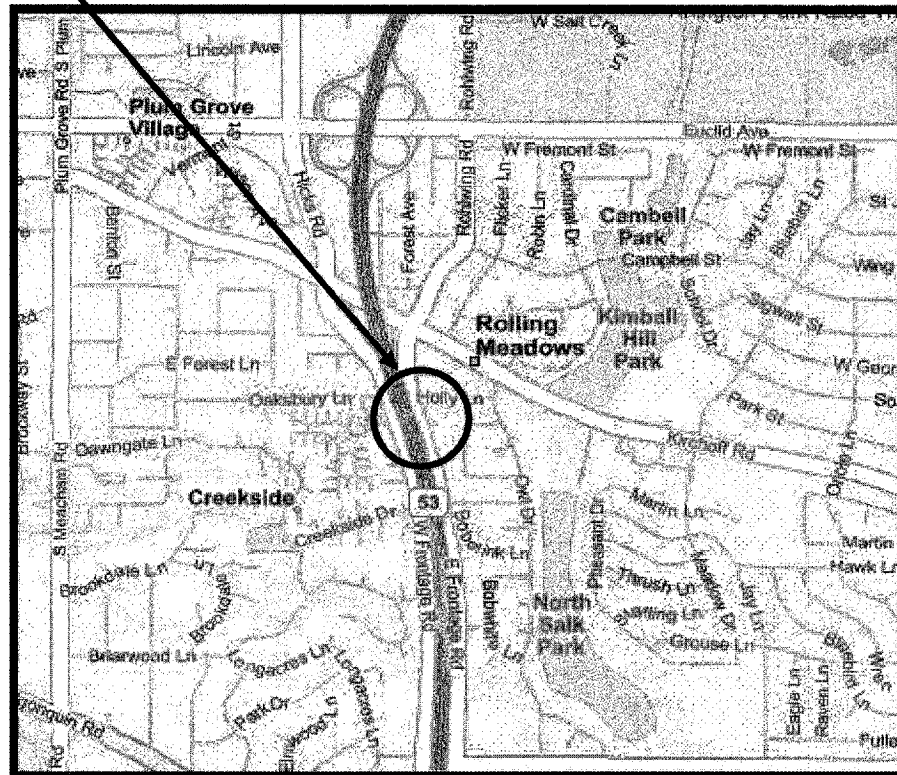
LOCATION 3 : IL-53 NORTHBOUND AT EXIT RAMP TO KIRCHOFF ROAD

LOCATION 4 : I-290 WESTBOUND AT SPLIT FOR LOCALS & EXPRESS TO I-90 & IL-62

R 10 E

R 11 E

T 42 N

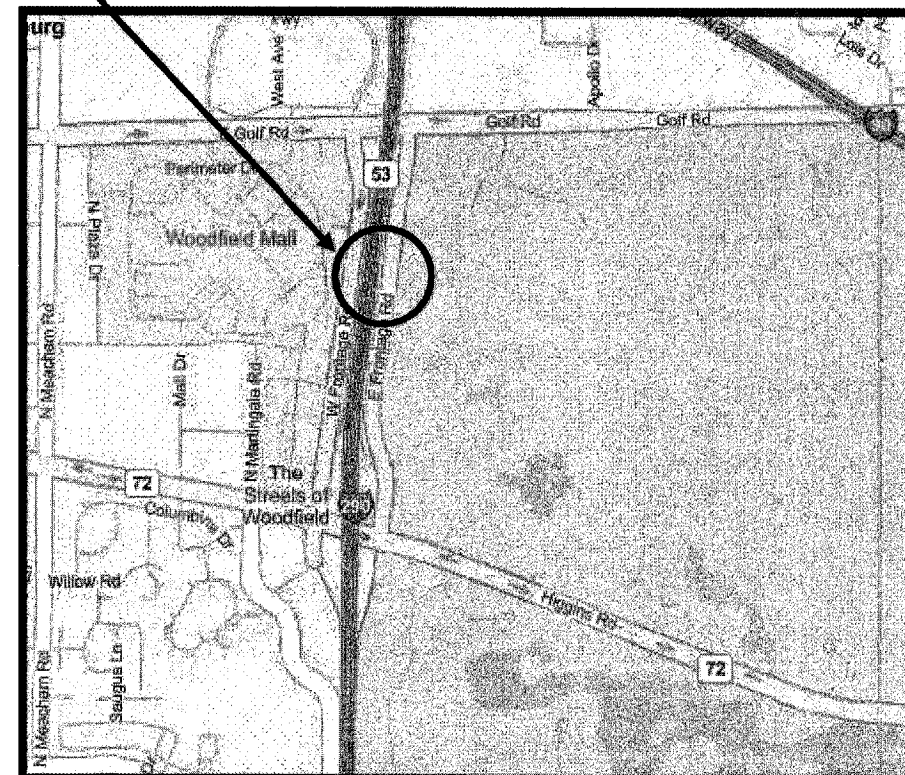


PALATINE TOWNSHIP
COOK COUNTY

TRAFFIC DATA:

IL-53 NORTHBOUND: SPEED LIMIT = 55 MPH
2006 ADT = 161,700

T 41 N



ELKGROVE/JEFFERSON TOWNSHIPS
COOK COUNTY

TRAFFIC DATA:

I-290 WESTBOUND: SPEED LIMIT = 55 MPH
2006 ADT = 167,800

ILLINOIS DEPARTMENT OF TRANSPORTATION

LOCATION MAPS
LOCATIONS: 3 AND 4

ROUTE	SECTION	COUNTY	TOTAL SHEETS	SHEET NUMBER
VARIOUS	2007-009 GR	VARIOUS	27	7

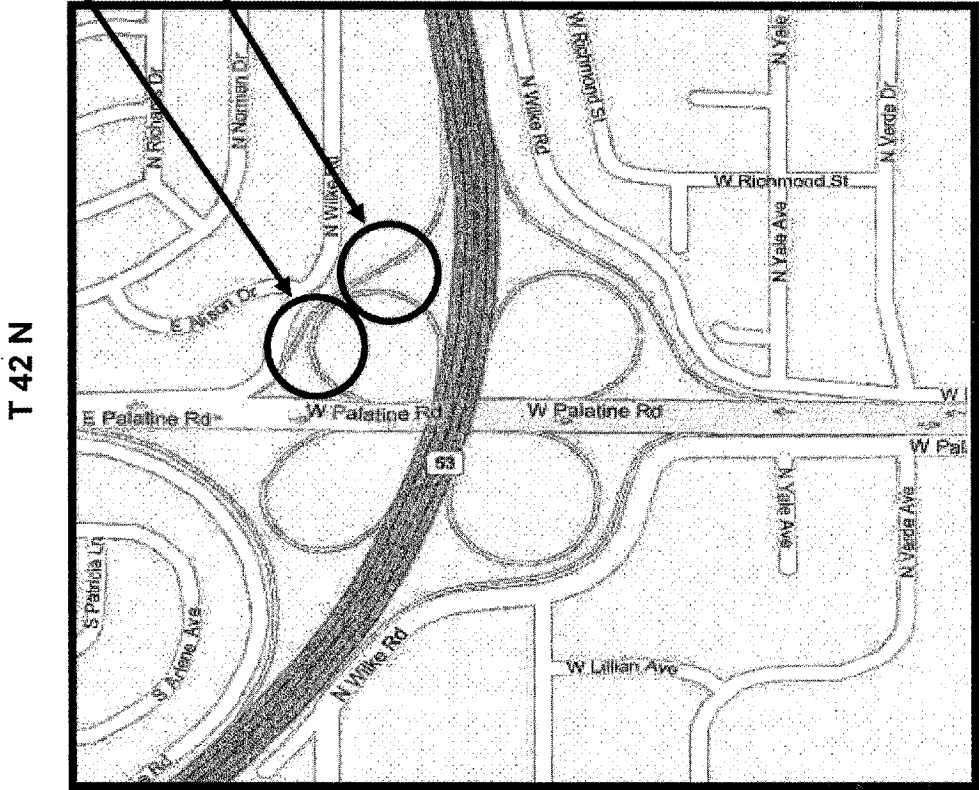
IMPROVEMENTS ARE LOCATED IN THE VILLAGE OF PALATINE

Contract 60C34

LOCATION 6 : IL-53 SOUTHBOUND ENTRANCE RAMP FROM WESTBOUND PALATINE ROAD (NOSE END)

LOCATION 7 : IL-53 SOUTHBOUND ENTRANCE RAMP FROM WESTBOUND PALATINE ROAD (EXIT END)

R 10 E



**PALATINE TOWNSHIP
COOK COUNTY**

TRAFFIC DATA:
 IL-53 SOUTHBOUND: SPEED LIMIT = 55 MPH
 2006 ADT = 118,800

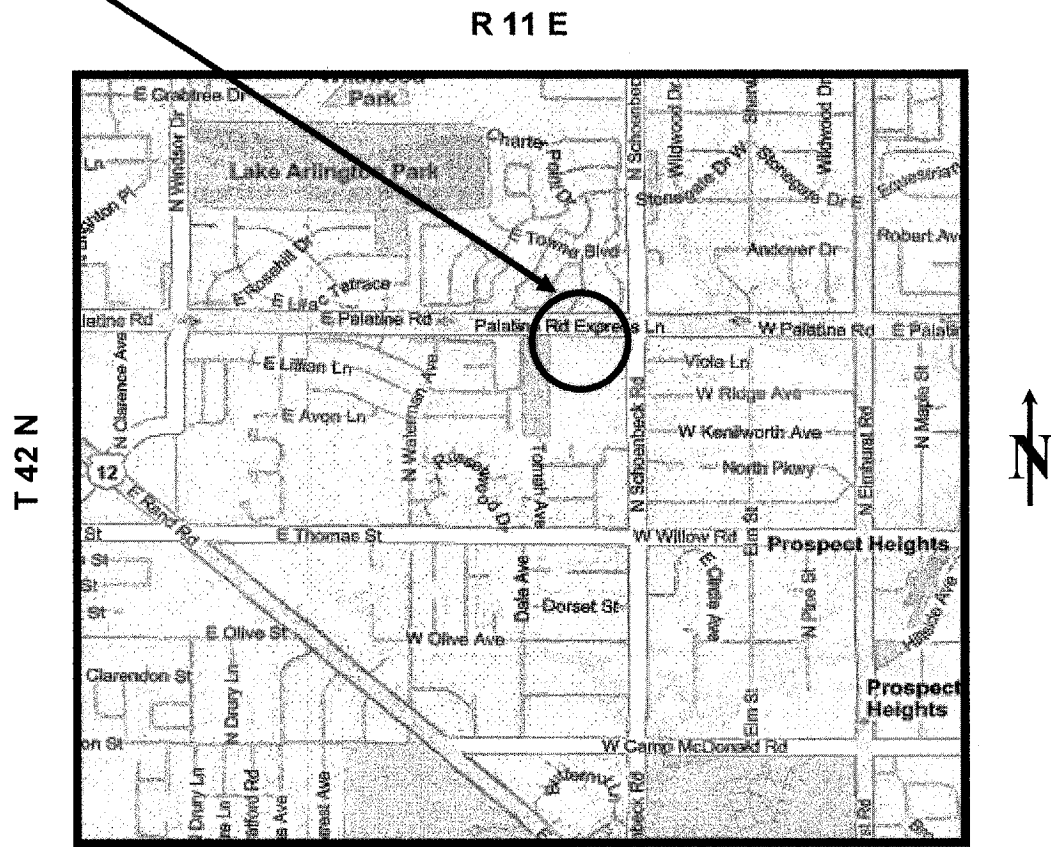
ILLINOIS DEPARTMENT OF TRANSPORTATION
LOCATION MAPS
 LOCATIONS: 6 AND 7

ROUTE	SECTION	COUNTY	TOTAL SHEETS	SHEET NUMBER
VARIOUS	2007-009 GR	VARIOUS	27	8

Contract 60C34

IMPROVEMENT IS LOCATED IN THE CITY OF PROSPECT HEIGHTS

**LOCATION 5 : PALATINE ROAD EASTBOUND
(ATTACHED TO SIGN TRUSS FOR SCHOENBECK RD)**



**WHEELING TOWNSHIP
COOK COUNTY**

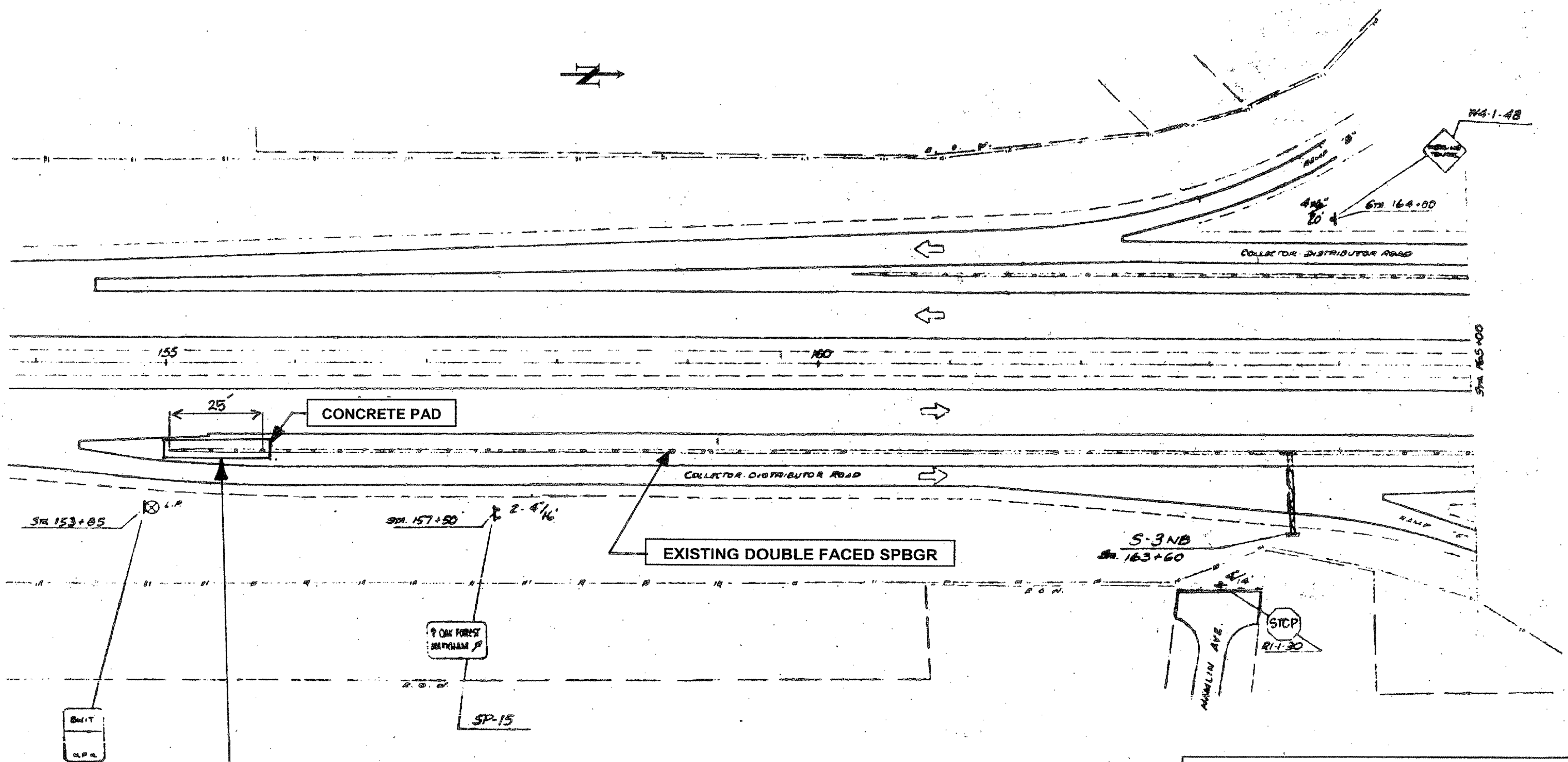
TRAFFIC DATA:
 PALATINE ROAD: SPEED LIMIT = 45 MPH
 2006 ADT = 24,900

ILLINOIS DEPARTMENT OF TRANSPORTATION

 LOCATION MAPS
 LOCATION: 5

ROUTE	SECTION	COUNTY	TOTAL SHEETS	SHEET NUMBER
VARIOUS	2007-009 GR	VARIOUS	27	9

Contract 60C34



REPLACE EXISTING TRAFFIC BARRIER TERMINAL TYPE 3 WITH 'IMPACT ATTENUATOR (SEVERE USE, NARROW), TEST LEVEL 3'

ILLINOIS DEPARTMENT OF TRANSPORTATION
**REPAIR PLAN
 LOCATION: 1
 I-57 NB AT 159TH ST**

SHEET 1 OF 2

ROUTE	SECTION	COUNTY	TOTAL SHEETS	SHEET NUMBER
VARIOUS	2007-009 GR	VARIOUS	27	10

Contract 60C34



**LOCATION 1 : I-57 NORTHBOUND
AT EXIT RAMP TO 159TH STREET (U.S. 6)**

ILLINOIS DEPARTMENT OF TRANSPORTATION

**REPAIR PLAN
LOCATION: 1
I-57 NB AT 159TH ST**

SHEET 2 OF 2

ROUTE	SECTION	COUNTY	TOTAL SHEETS	SHEET NUMBER
VARIOUS	2007-009 GR	VARIOUS	27	11

Contract 60C34

CURVE "C"

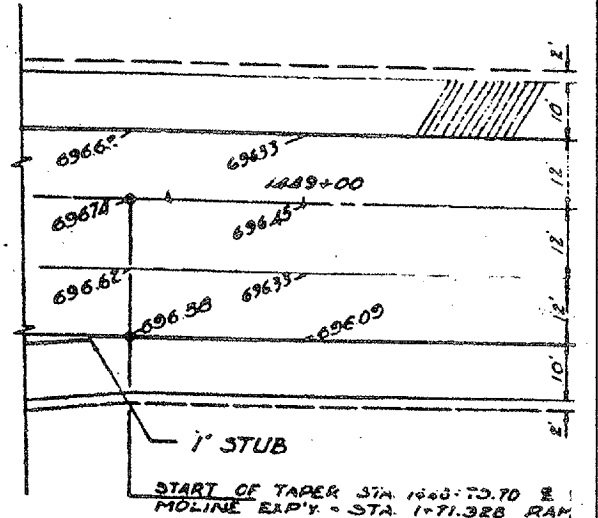
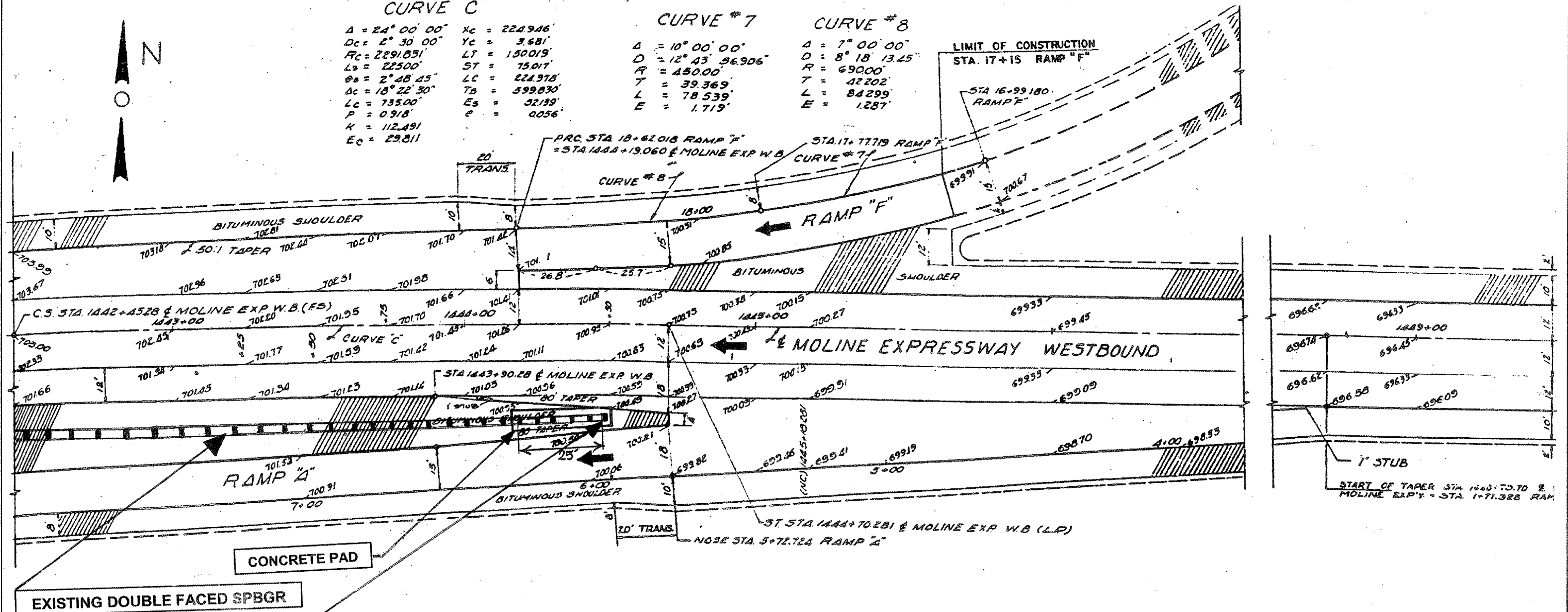
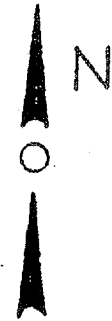
$\Delta = 24^{\circ} 00' 00''$ $x_c = 224.946'$
 $D_c = 2^{\circ} 30' 00''$ $y_c = 3.681'$
 $R_c = 2291.031'$ $L_T = 1500.019'$
 $L_s = 225.00'$ $S_T = 75.017'$
 $\theta_s = 2^{\circ} 48' 45''$ $L_c = 224.918'$
 $\Delta_c = 18^{\circ} 22' 30''$ $T_s = 599.830'$
 $L_c = 735.00'$ $E_s = 52.139'$
 $P = 0.918'$ $e = 0.056'$
 $K = 112.491$
 $E_c = 29.811$

CURVE #7

$\Delta = 10^{\circ} 00' 00''$
 $D = 12^{\circ} 43' 56.906''$
 $R = 450.00'$
 $T = 39.369'$
 $L = 78.539'$
 $E = 1.719'$

CURVE #8

$\Delta = 7^{\circ} 00' 00''$
 $D = 8^{\circ} 18' 13.45''$
 $R = 690.00'$
 $T = 42.202'$
 $L = 84.299'$
 $E = 1.287'$



REPLACE EXISTING TRAFFIC BARRIER TERMINAL TYPE 3 WITH "IMPACT ATTENUATOR (SEVERE USE, NARROW), TEST LEVEL 3"

ILLINOIS DEPARTMENT OF TRANSPORTATION

REPAIR PLAN
LOCATION: 2
I-80 WB AT I-57 SB

SHEET 1 OF 2

ROUTE	SECTION	COUNTY	TOTAL SHEETS	SHEET NUMBER
VARIOUS	2007-009 GR	VARIOUS	27	12

Contract 60C34



**LOCATION 2 : I-80 WESTBOUND
AT EXIT RAMP TO I-57 SOUTHBOUND**

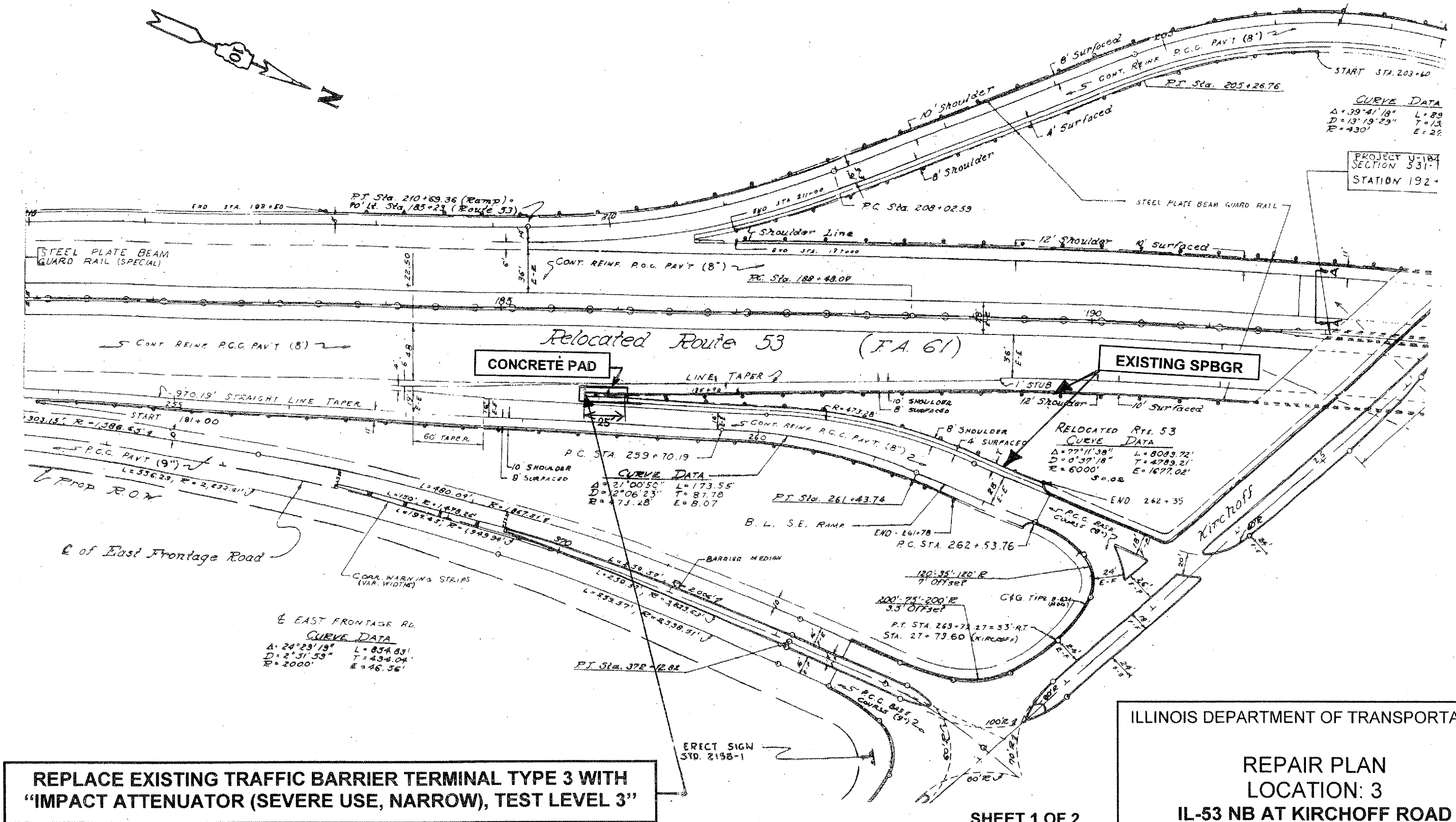
ILLINOIS DEPARTMENT OF TRANSPORTATION

**REPAIR PLAN
LOCATION: 2
I-80 WB AT I-57 SB**

SHEET 2 OF 2

ROUTE	SECTION	COUNTY	TOTAL SHEETS	SHEET NUMBER
VARIOUS	2007-009 GR	VARIOUS	27	13

Contract 60C34



REPLACE EXISTING TRAFFIC BARRIER TERMINAL TYPE 3 WITH "IMPACT ATTENUATOR (SEVERE USE, NARROW), TEST LEVEL 3"

ILLINOIS DEPARTMENT OF TRANSPORTATION
 REPAIR PLAN
 LOCATION: 3
 IL-53 NB AT KIRCHOFF ROAD

SHEET 1 OF 2

ROUTE	SECTION	COUNTY	TOTAL SHEETS	SHEET NUMBER
VARIOUS	2007-009 GR	VARIOUS	21	14

Contract 60C34



**LOCATION 3 : IL-53 NORTHBOUND
AT EXIT RAMP TO KIRCHOFF ROAD**

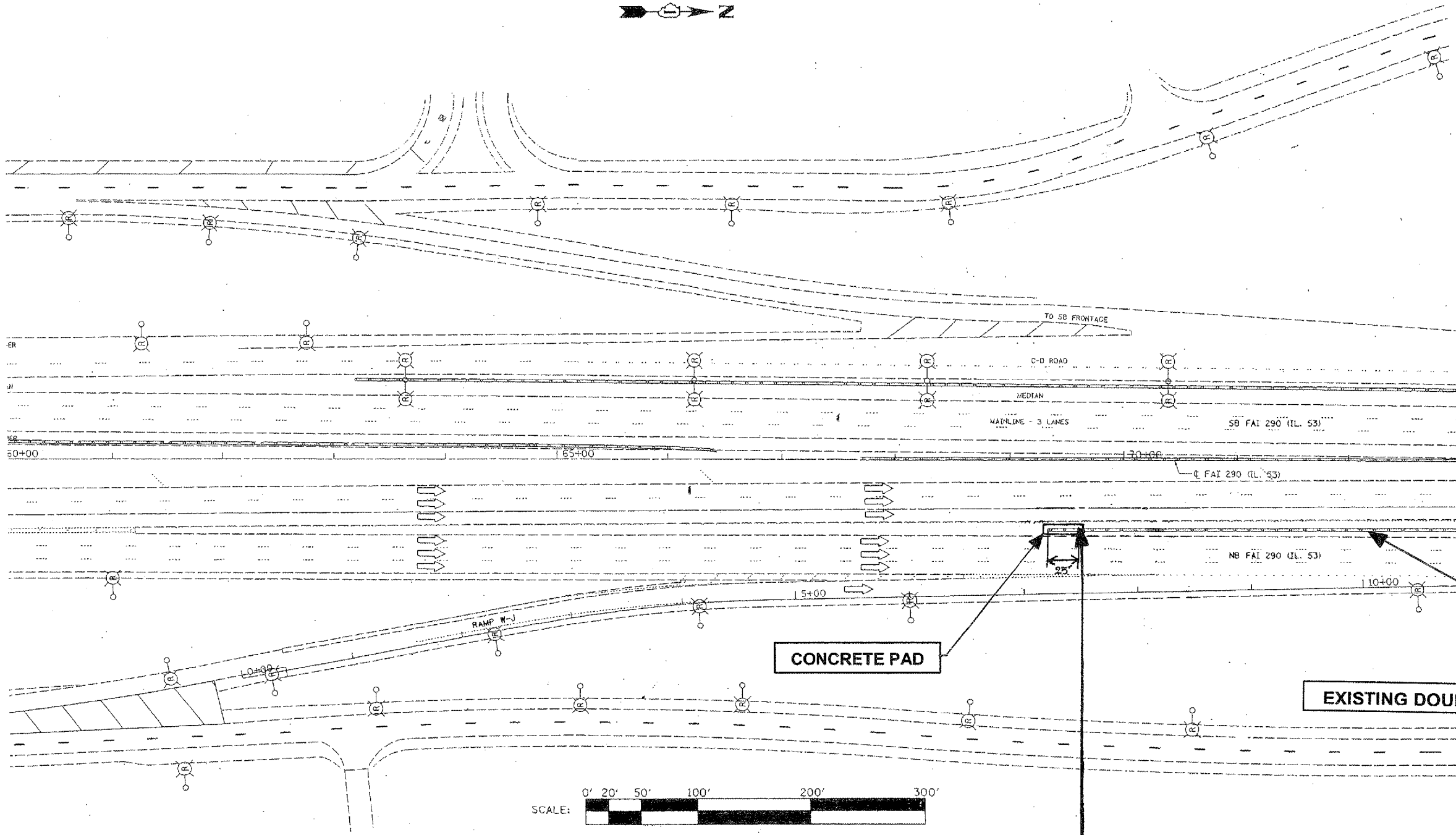
ILLINOIS DEPARTMENT OF TRANSPORTATION

**REPAIR PLAN
LOCATION: 3
IL-53 NB AT KIRCHOFF ROAD**

SHEET 2 OF 2

ROUTE VARIOUS	SECTION 2007-009 GR	COUNTY VARIOUS	TOTAL SHEETS 27	SHEET NUMBER 15
-------------------------	-------------------------------	--------------------------	---------------------------	---------------------------

Contract 60C34



**REPLACE EXISTING TRAFFIC BARRIER TERMINAL TYPE 3 WITH
"IMPACT ATTENUATOR (SEVERE USE, NARROW), TEST LEVEL 3"**

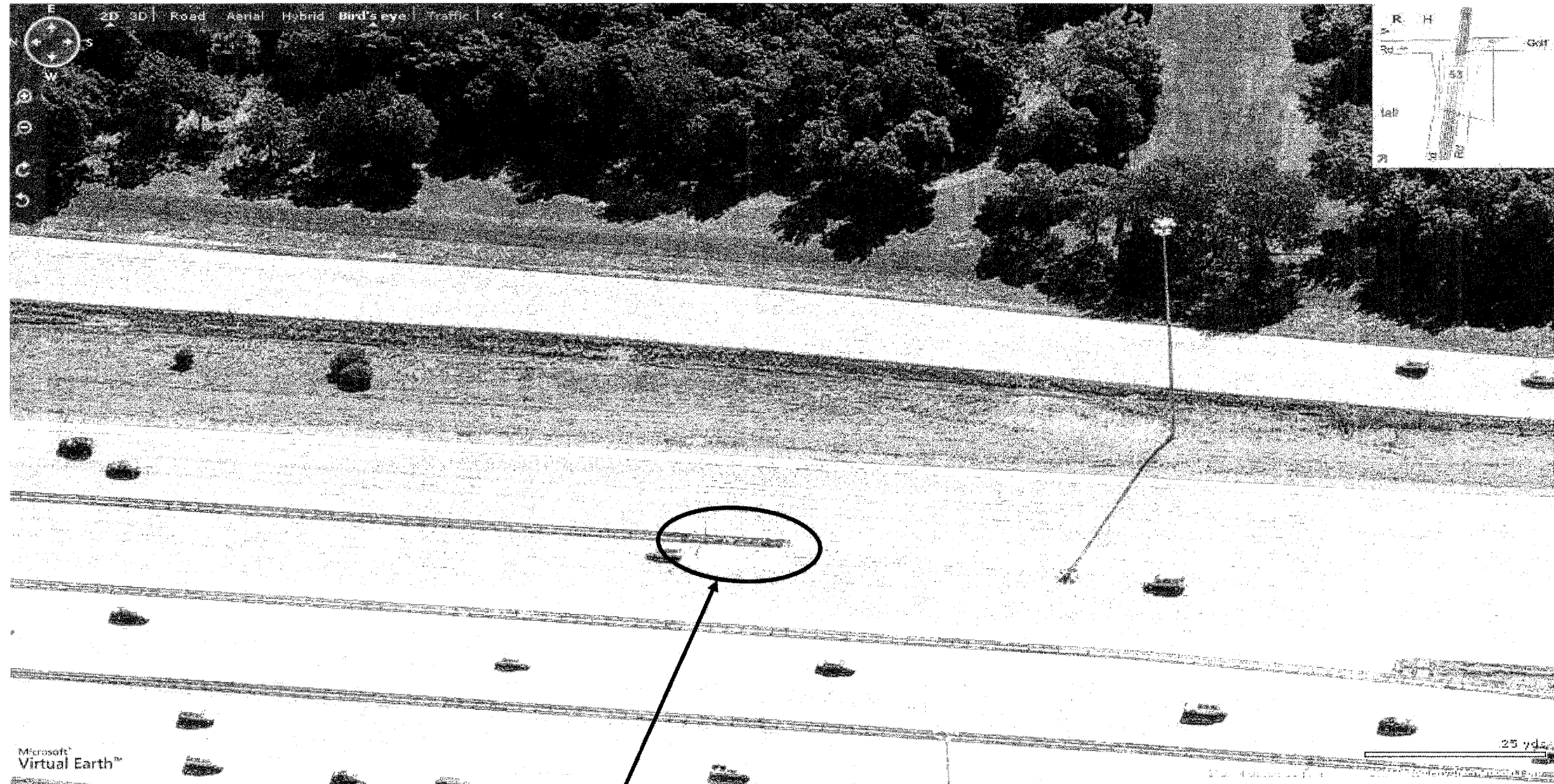
ILLINOIS DEPARTMENT OF TRANSPORTATION

REPAIR PLAN
LOCATION: 4
I-290 WB AT SPLIT TO I-90 & IL-62

SHEET 1 OF 2

ROUTE	SECTION	COUNTY	TOTAL SHEETS	SHEET NUMBER
VARIOUS	2007-009 GR	VARIOUS	27	16

Contract 60C34



**LOCATION 4 : I-290 WESTBOUND AT SPLIT FOR
LOCALS & EXPRESS TO I-90 & IL-62**

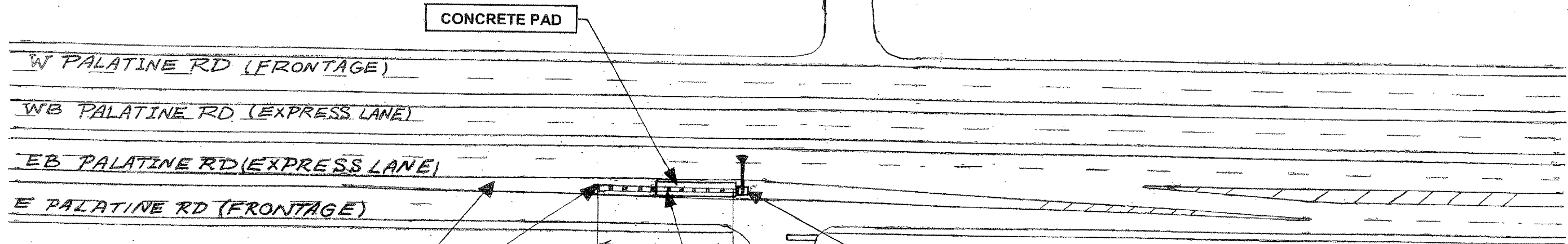
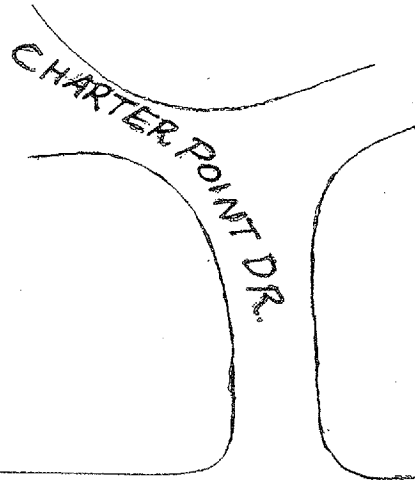
ILLINOIS DEPARTMENT OF TRANSPORTATION

**REPAIR PLAN
LOCATION: 4
I-290 WB AT SPLIT TO I-90 & IL-62**

SHEET 2 OF 2

ROUTE	SECTION	COUNTY	TOTAL SHEETS	SHEET NUMBER
VARIOUS	2007-009 GR	VARIOUS	27	17

Contract 60C34



CONCRETE PAD

W PALATINE RD (FRONTAGE)

WB PALATINE RD (EXPRESS LANE)

EB PALATINE RD (EXPRESS LANE)

E PALATINE RD (FRONTAGE)

MEDIAN

EXISTING DOUBLE FACED SPBGR

80'

SIGN WITH FOUNDATION

N DALE AVE.

REPLACE EXISTING TRAFFIC BARRIER TERMINAL TYPE 3 WITH "IMPACT ATTENUATOR (SEVERE USE, NARROW), TEST LEVEL 3"

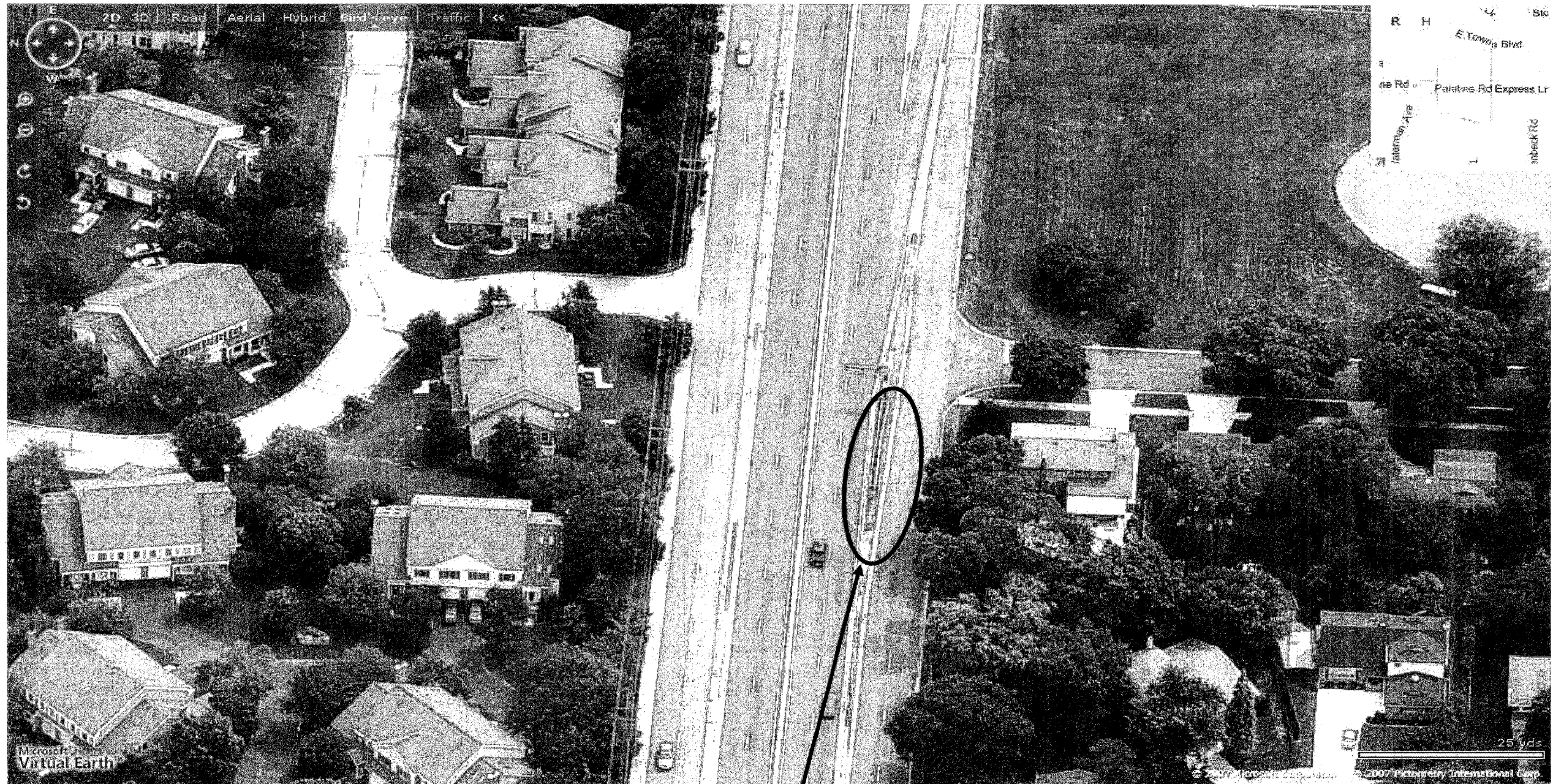
ILLINOIS DEPARTMENT OF TRANSPORTATION

REPAIR PLAN
LOCATION: 5
PALATINE RD EB AT SIGN TRUSS FOR
SCHOENBECK RD

SHEET 1 OF 2

ROUTE	SECTION	COUNTY	TOTAL SHEETS	SHEET NUMBER
VARIOUS	2007-009 GR	VARIOUS	27	18

Contract 60C34



**LOCATION 5 : PALATINE ROAD EASTBOUND
(ATTACHED TO SIGN TRUSS FOR SCHOENBECK RD)**

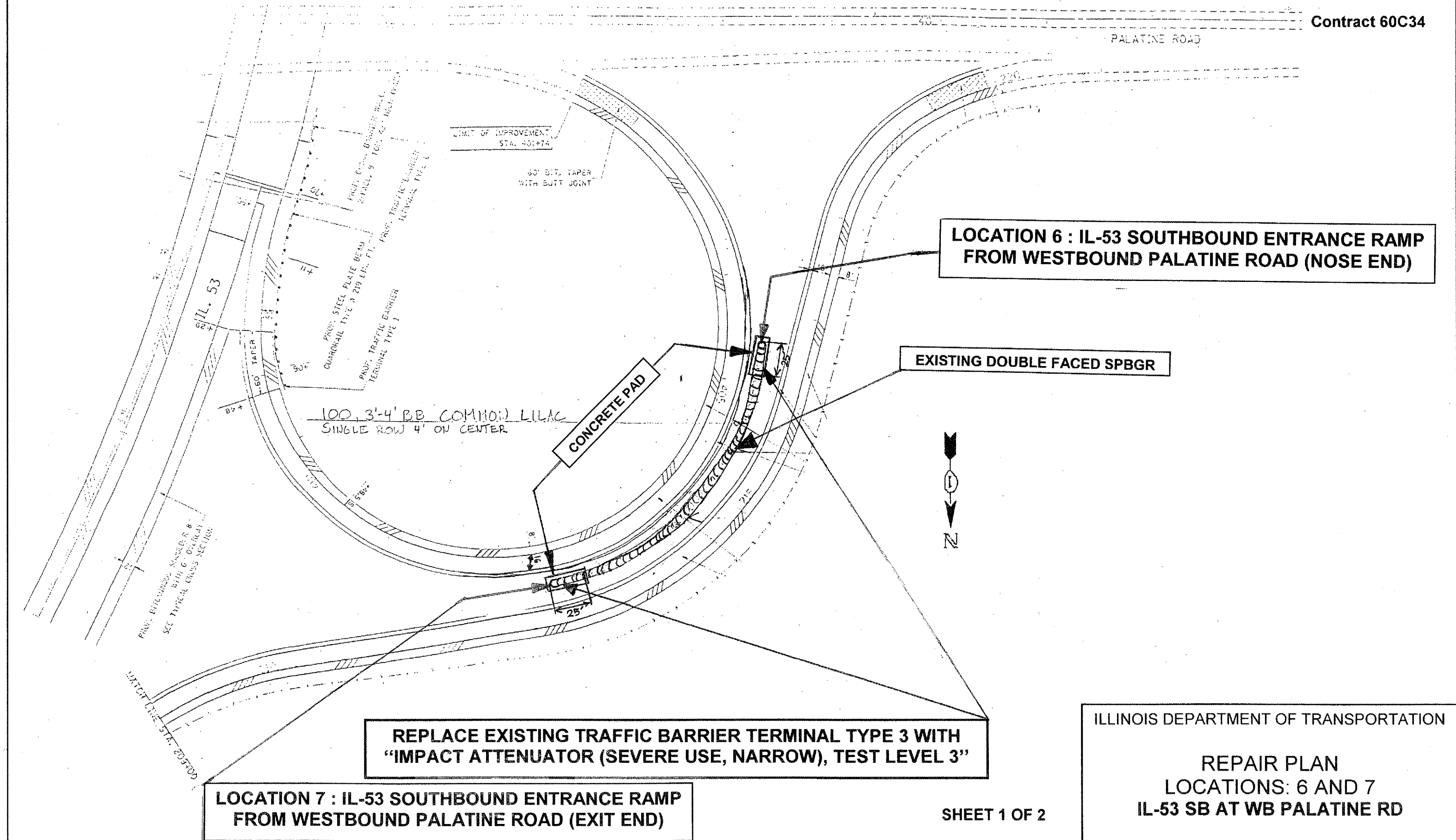
ILLINOIS DEPARTMENT OF TRANSPORTATION

REPAIR PLAN
LOCATION: 5
PALATINE RD EB AT SIGN TRUSS FOR
SCHOENBECK RD

SHEET 2 OF 2

ROUTE	SECTION	COUNTY	TOTAL SHEETS	SHEET NUMBER
VARIOUS	2007-009 GR	VARIOUS	27	19

Contract 60C34



LOCATION 6 : IL-53 SOUTHBOUND ENTRANCE RAMP FROM WESTBOUND PALATINE ROAD (NOSE END)

EXISTING DOUBLE FACED SPBGR

CONCRETE PAD

REPLACE EXISTING TRAFFIC BARRIER TERMINAL TYPE 3 WITH "IMPACT ATTENUATOR (SEVERE USE, NARROW), TEST LEVEL 3"

LOCATION 7 : IL-53 SOUTHBOUND ENTRANCE RAMP FROM WESTBOUND PALATINE ROAD (EXIT END)

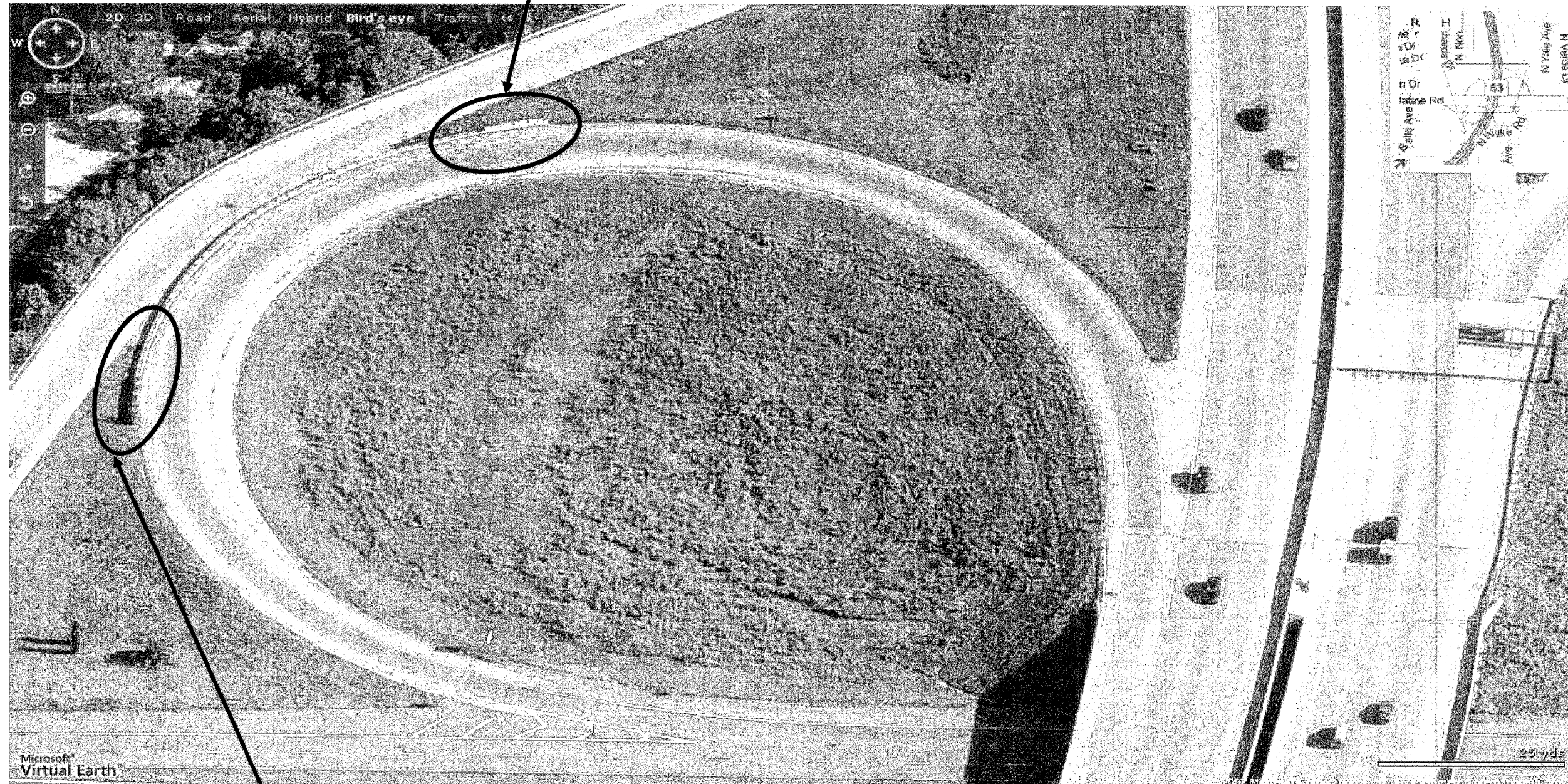
ILLINOIS DEPARTMENT OF TRANSPORTATION
 REPAIR PLAN
 LOCATIONS: 6 AND 7
 IL-53 SB AT WB PALATINE RD

SHEET 1 OF 2

ROUTE	SECTION	COUNTY	TOTAL SHEETS	SHEET NUMBER
VARIOUS	2007-009 GR	VARIOUS	27	20

Contract 60C34

LOCATION 7 : IL-53 SOUTHBOUND ENTRANCE RAMP FROM WESTBOUND PALATINE ROAD (EXIT END)

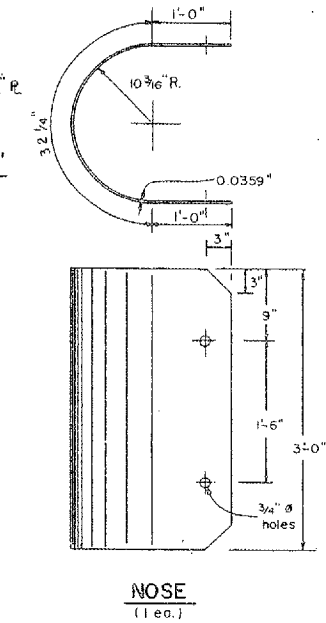
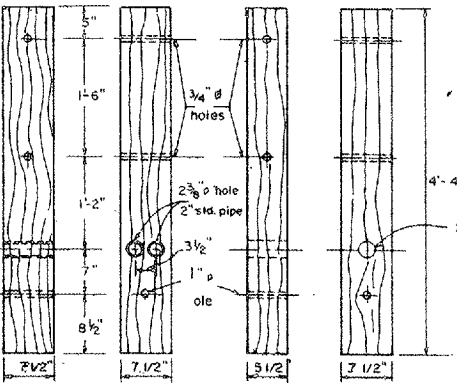
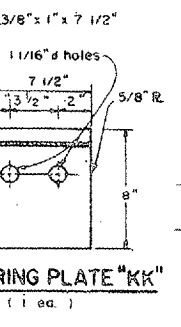
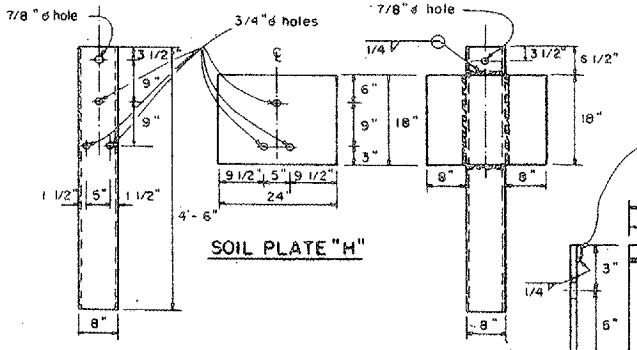
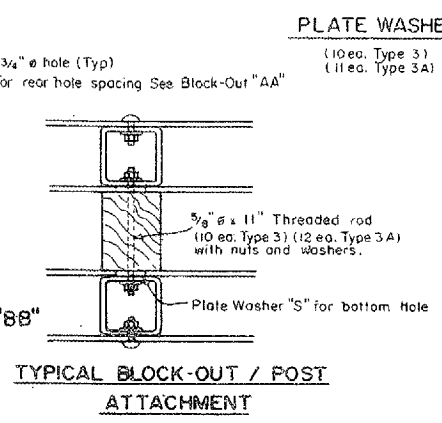
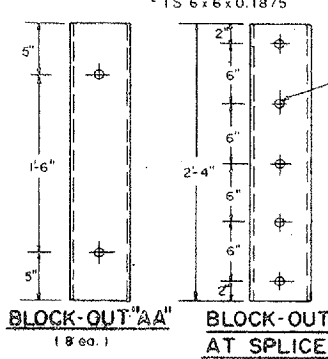
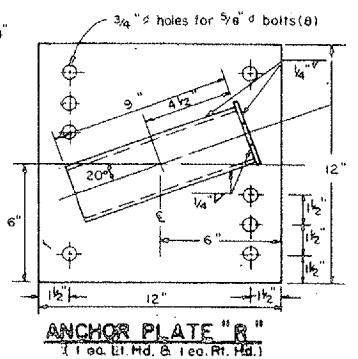
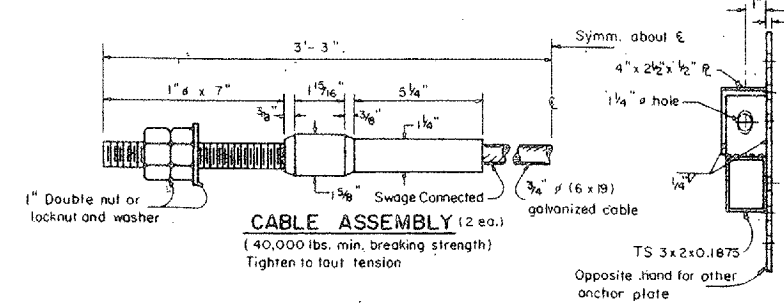
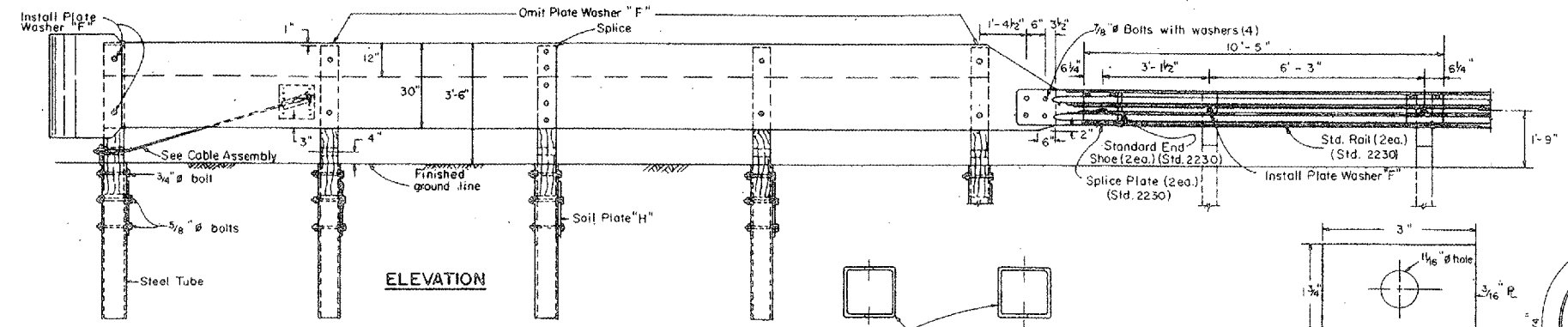
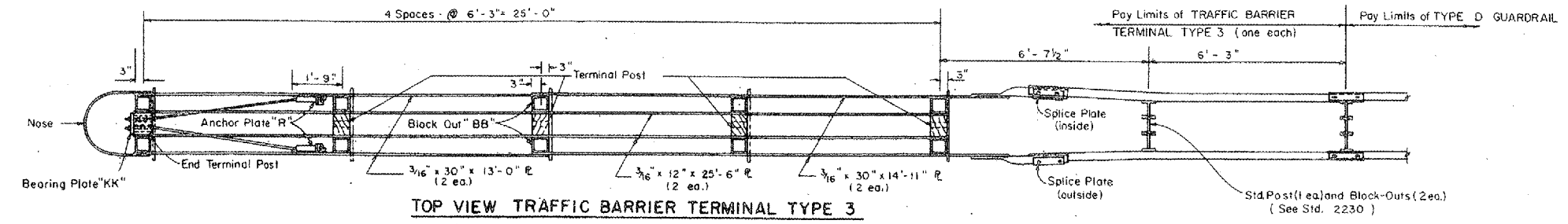


LOCATION 6 : IL-53 SOUTHBOUND ENTRANCE RAMP FROM WESTBOUND PALATINE ROAD (NOSE END)

ILLINOIS DEPARTMENT OF TRANSPORTATION
 REPAIR PLAN
 LOCATIONS: 6 AND 7
 IL-53 SB AT WB PALATINE RD

ROUTE VARIOUS	SECTION 2007-009 GR	COUNTY VARIOUS	TOTAL SHEETS 27	SHEET NUMBER 21
------------------	------------------------	-------------------	--------------------	--------------------

Contract 60C34



Department of Transportation

PASSED May 20, 1981

APPROVED May 20, 1981

DESIGN NOTES

The Type 3 Terminal should be used on the traffic approach end of Steel Median Barriers.

The Type 3A Terminal should be used on the traffic approach end of Concrete Median Barriers.

The Type 3B Terminal is the GREAT System. For usage criteria see the Design Memorandum on Traffic Barrier Standards - Typical Application.

Design Notes will not appear in the contract plans.

GENERAL NOTES

All holes in Posts, Block-Outs and Plates shall be 3/4" unless otherwise noted.

The Wood Breakaway Posts shall be treated and shall conform to the requirements of Art. 711.06 of the Standard Specifications.

Steel Plate shall conform to the requirements of AASHTO M-183.

Bolts, Nuts, Washers and Threaded Rods shall conform to the requirements of Article 710.31 of the Standard Specifications.

See Standard 2230 for details of guard rail elements not shown.

Unless otherwise shown all Bolts and Nuts shall be Standard Post and Splice Bolts and Nuts (See Standard 2230).

Block-Out "AA" shall be used at all locations unless otherwise noted.

Hollow Structural Tubing shall conform to ASTM- 500, Grade B or A-501.

All Steel hardware shall meet the requirements of Section 628 of the Std Specs. and shall be galvanized.

The 3/16" Steel Plates shall be galvanized in accordance with the requirements for Guard Rail under AASHTO M-180 for Class A, Type 1.

TRAFFIC BARRIER

TERMINAL TYPE 3 & 3A

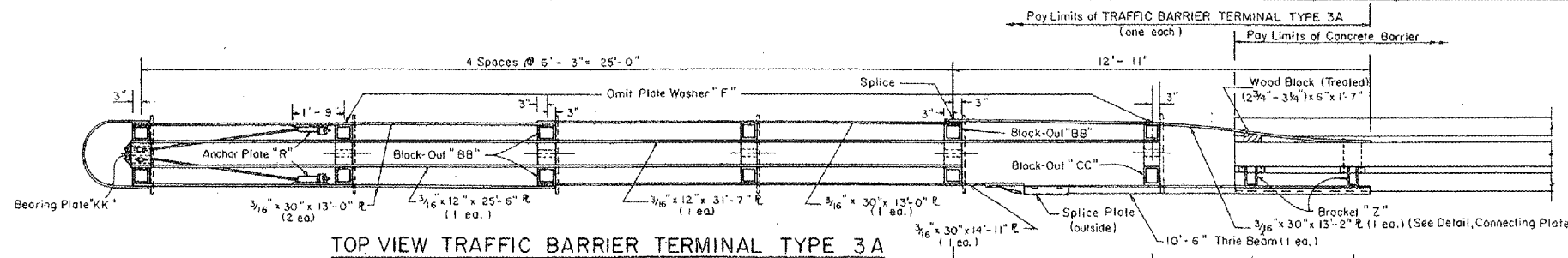
Sheet 1 of 2 Sheets

STANDARD 2338-1

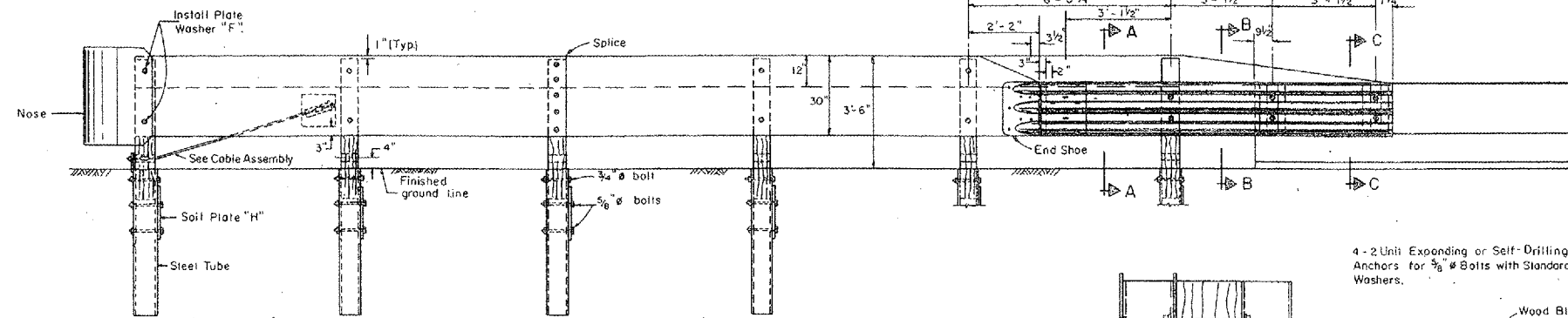
FOR INFORMATION ONLY

ROUTE VARIOUS	SECTION 2007-009 GR	COUNTY VARIOUS	TOTAL SHEETS 27	SHEET NUMBER 22
------------------	------------------------	-------------------	--------------------	--------------------

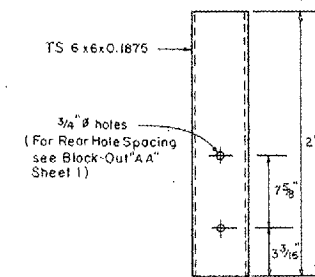
Contract 60C34



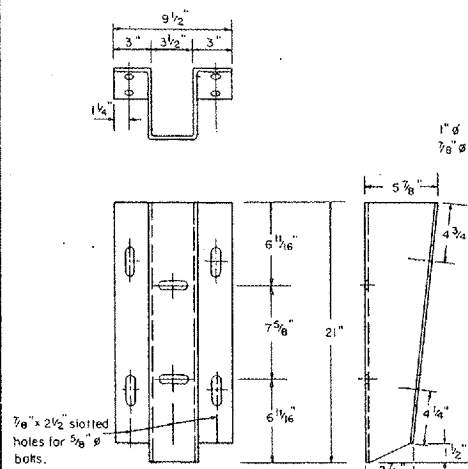
TOP VIEW TRAFFIC BARRIER TERMINAL TYPE 3A



ELEVATION

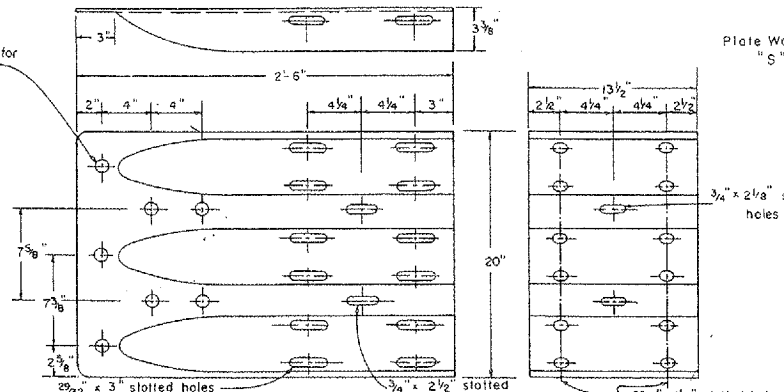


BLOCK-OUT "CC" FOR THRIE BEAM
(1 ea.)



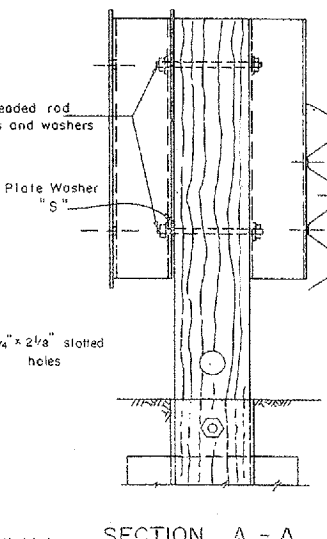
BRACKET "Z"
(2 ea.)

(1/4" Steel Plate or section of rectangular tubing with flanges welded on.)

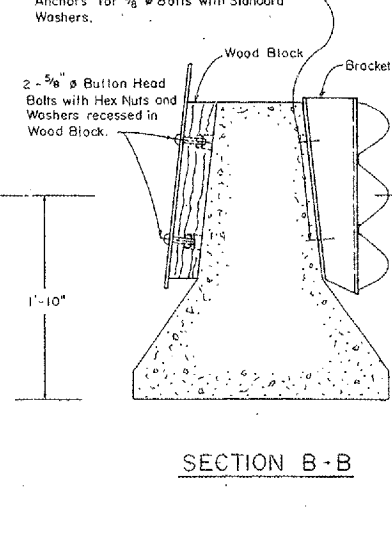


THRIE BEAM
END SHOE
(1 ea.)

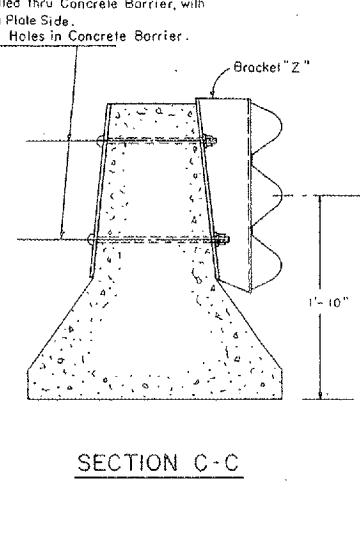
SPLICE PLATE
(1 ea.)



SECTION A - A

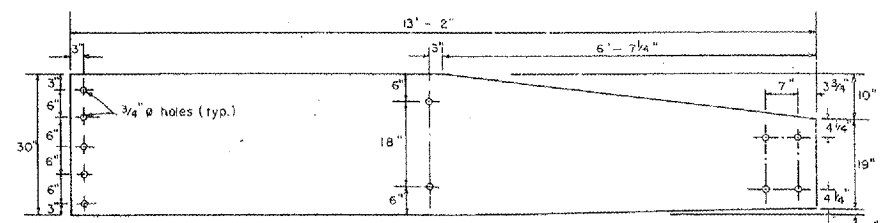


SECTION B - B



SECTION C - C

Note: Cost of Concrete Barrier is not included in the cost of Traffic Barrier Terminal Type 3A.
Cost of attachment to the Concrete Barrier including drilling of holes shall be included in the unit price bid for TRAFFIC BARRIER TERMINAL TYPE 3A.



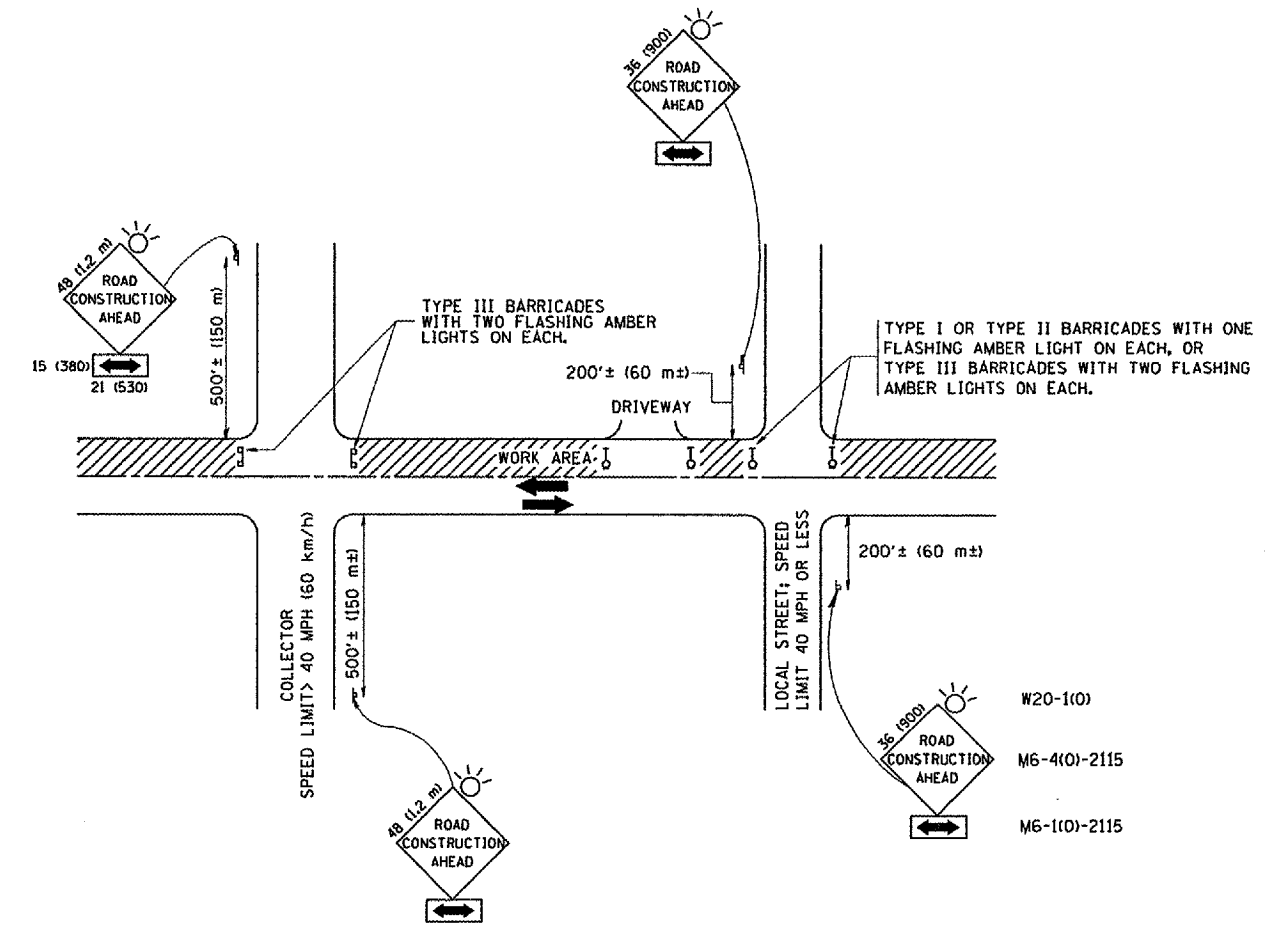
CONNECTING PLATE
(1 ea.)

Canada Department of Transportation
PASSED MAY 20 1981
APPROVED MAY 20 1981
Engineer of Design Operations
Engineer of Design

TRAFFIC BARRIER
TERMINAL TYPE 3 & 3A
Sheet 2 of 2 Sheets
STANDARD 2338-1

E-33360

FOR INFORMATION ONLY



TRAFFIC CONTROL AND PROTECTION FOR SIDE ROADS, INTERSECTIONS, AND DRIVEWAYS

NOTES:

- A. FOR NO LANE RESTRICTION ON THE SIDE ROAD OR DRIVEWAYS
 1. SIDE ROAD WITH A SPEED LIMIT OF 40 MPH (60 km/h) OR LESS AS SHOWN ON THE DRAWING AND AS DIRECTED BY THE ENGINEER:
 - a) ONE ROAD CONSTRUCTION AHEAD SIGN 36 x 36 (900x900) WITH A FLASHER AND FLAG MOUNTED ON IT APPROXIMATELY 200' (60 m) IN ADVANCE OF THE MAIN ROUTE.
 - b) THE CLOSED PORTION OF THE MAIN ROUTE SHALL BE PROTECTED BY BLOCKING WITH TYPE I, TYPE II OR TYPE III BARRICADES, 1/3 OF THE CROSS SECTION OF THE CLOSED PORTION.
 2. SIDE ROAD WITH A SPEED LIMIT GREATER THAN 40 MPH (60 km/h) AS SHOWN ON THE DRAWING AND AS DIRECTED BY THE ENGINEER:
 - a) ONE ROAD CONSTRUCTION AHEAD SIGN 48 x 48 (1.2 m x 1.2 m) WITH A FLASHER MOUNTED ON IT APPROXIMATELY 500' (150 m) IN ADVANCE OF THE MAIN ROUTE.
 - b) THE CLOSED PORTION OF THE MAIN ROUTE SHALL BE PROTECTED BY BLOCKING WITH TYPE III BARRICADES, 1/2 OF THE CROSS SECTION OF THE CLOSED PORTION.
 3. WHEN THE SIDE ROAD LIES BETWEEN THE BEGINNING OF THE MAINLINE SIGNING AND THE WORK ZONE, A SINGLE HEADED ARROW (M6-1) SHALL BE USED IN LIEU OF THE DOUBLE HEADED ARROW (M6-4).
- B. FOR A LANE CLOSURE ON A SIDE ROAD OR DRIVEWAY:

USE APPLICABLE PORTIONS OF THE TYPICAL APPLICATION OF TRAFFIC CONTROL DEVICES (STD. 701501, STD. 701606 OR THE APPROPRIATE STANDARD). THE SPACING OF SIGNS AND BARRICADES SHALL BE ADJUSTED FOR FIELD CONDITIONS AS DIRECTED BY THE ENGINEER. THE DIRECTIONAL ARROW SHALL BE COVERED OR REMOVED WHEN NO LONGER CONSISTENT WITH THE SIDE ROAD LANE CLOSURE.
- C. ADVANCE WARNING SIGNS ARE TO BE OMITTED ON DRIVEWAY UNLESS OTHERWISE NOTED.
- D. THE TRAFFIC CONTROL AND PROTECTION FOR SIDE ROADS, INTERSECTIONS, AND DRIVEWAYS SHALL BE INCIDENTAL TO THE COST OF SPECIFIED TRAFFIC CONTROL STANDARDS OR ITEMS.

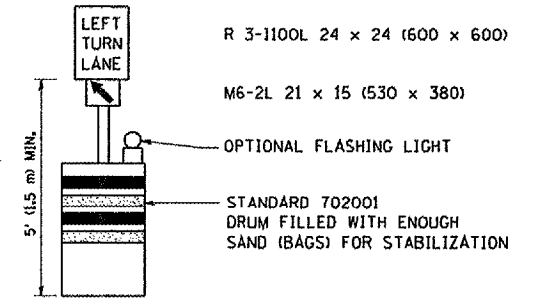
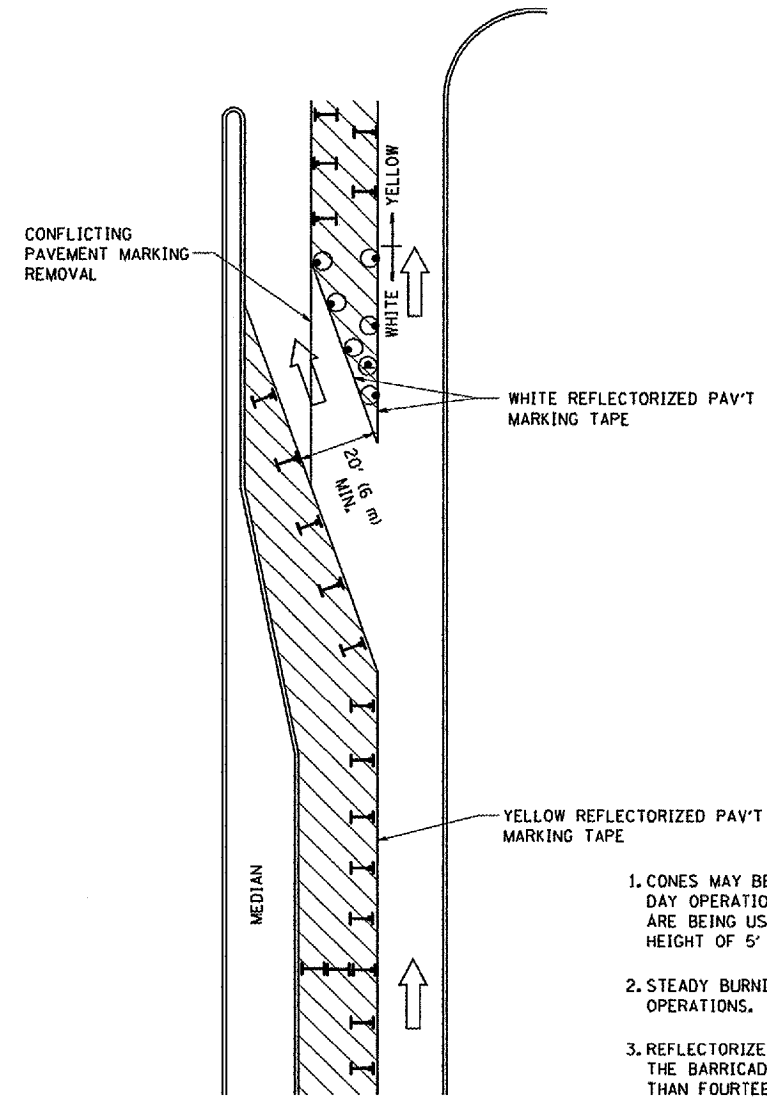
All dimensions are in millimeters (inches) unless otherwise shown.

FILE NAME = M:\dststd\22x34\1c18.dgn	USER NAME = geglianobt	DESIGNED - LHA	REVISED - J. OBERLE 10-18-95
		DRAWN -	REVISED - A. HOUSEH 03-06-96
		CHECKED -	REVISED - A. HOUSEH 10-15-96
		DATE - 06-89	REVISED - T. RAMMACHER 01-06-00

STATE OF ILLINOIS
DEPARTMENT OF TRANSPORTATION

TRAFFIC CONTROL AND PROTECTION FOR SIDE ROADS, INTERSECTIONS, AND DRIVEWAYS			
SCALE: NONE	SHEET NO. 1 OF 1 SHEETS	STA.	TO STA.

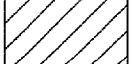
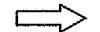



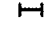
F.A. RTE.	SECTION	COUNTY	TOTAL SHEETS	SHEET NO.
	2007-009GR	Various	27	23
TC-10			CONTRACT NO.	
FED. ROAD DIST. NO. 1 ILLINOIS FED. AID PROJECT				



GENERAL NOTES

1. CONES MAY BE SUBSTITUTED FOR BARRICADES OR DRUMS AT HALF THE SPACING DURING DAY OPERATIONS. CONES SHALL BE A MINIMUM OF 28 (710) IN HEIGHT. WHEN CONES ARE BEING USED, THE "LEFT TURN LANE" SIGN MAY BE SKID MOUNTED AT A MINIMUM HEIGHT OF 5' (1.5 m).
2. STEADY BURNING LIGHTS WILL NOT BE REQUIRED ON BARRICADES OR DRUMS FOR DAY OPERATIONS. ALL LIGHTS SHALL BE MONODIRECTIONAL.
3. REFLECTORIZED TEMPORARY PAVEMENT MARKING TAPE SHALL BE PLACED THROUGHOUT THE BARRICADED AREA OF EACH TURN BAY WHERE THE CLOSURE TIME IS GREATER THAN FOURTEEN DAYS.
4. THIS APPLICATION ALSO APPLIES WHEN WORK IS BEING PERFORMED IN THE RIGHT LANE(S) AND THE RIGHT TURN BAY IS TO REMAIN OPEN. UNDER THIS CONDITION, "RIGHT TURN LANE" R3-100 24 x 24 (600 x 600) AND M6-2R 21 x 15 (530 x 380) SHALL BE USED.
5. THESE CONTROLS SHALL SUPPLEMENT MAINLINE TRAFFIC CONTROL FOR LANE CLOSURES.
6. LONGITUDINAL DIMENSIONS MAY BE ADJUSTED TO FIT FIELD CONDITIONS.
7. FORM BT 725 IS REQUIRED.
8. TRAFFIC CONTROL AND PROTECTION AT TURN BAYS (TO REMAIN OPEN TO TRAFFIC) SHALL BE INCLUDED IN THE COST SPECIFIED TRAFFIC CONTROL STANDARDS OR ITEMS.

LEGEND

-  WORK AREA
-  LANE OPEN TO TRAFFIC
-  TYPE I OR II BARRICADE WITH STEADY BURN LIGHT
-  DRUM WITH STEADY BURN LIGHT
-  DRUM WITH SIGN (WITH OPTIONAL FLASHING LIGHT) SEE DETAIL
-  TYPE I OR II CHECK BARRICADE WITH FLASHING LIGHT

All dimensions are in inches (millimeters) unless otherwise shown.

FILE NAME = W:\distsd\22x34\to14.dgn	USER NAME = gagienobt	DESIGNED -	REVISED -T, RAMMACHER 09-08-94
		DRAWN -	REVISED - A, HOUSEH 11-07-95
		PLOT SCALE = 50,0000' / IN.	REVISED - A, HOUSEH 10-12-96
		PLOT DATE = 1/4/2008	REVISED -T, RAMMACHER 01-06-00

**STATE OF ILLINOIS
DEPARTMENT OF TRANSPORTATION**

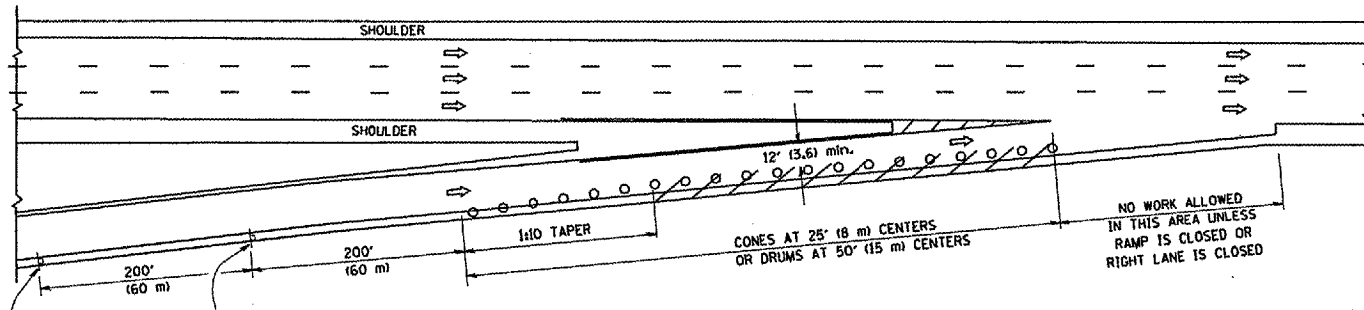
**TRAFFIC CONTROL AND PROTECTION AT TURN BAYS
(TO REMAIN OPEN TO TRAFFIC)**

SCALE: NONE SHEET NO. 1 OF 1 SHEETS STA. TO STA.

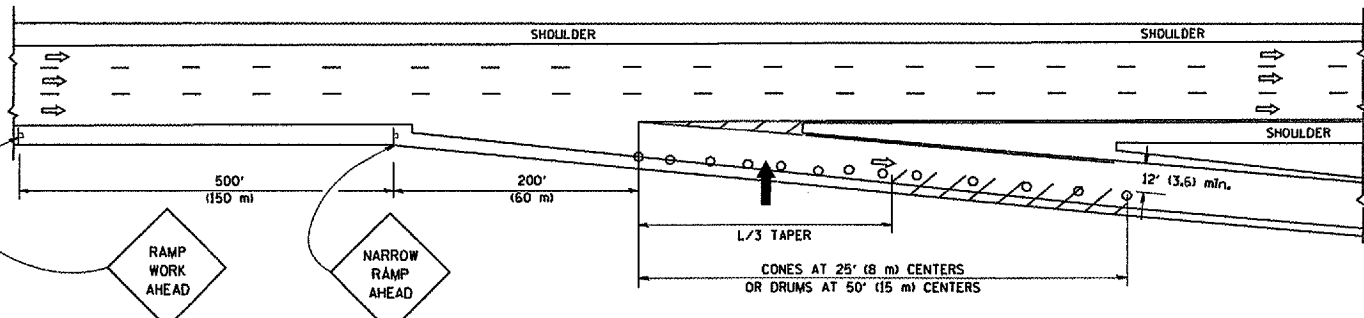
F.A. RTE.	SECTION	COUNTY	TOTAL SHEETS	SHEET NO.
	2097-009 GR	Various	27	24
TC-14			CONTRACT NO.	
FED. ROAD DIST. NO. 1 (ILLINOIS) FED. AID PROJECT				

PARTIAL RAMP CLOSURE DETAILS

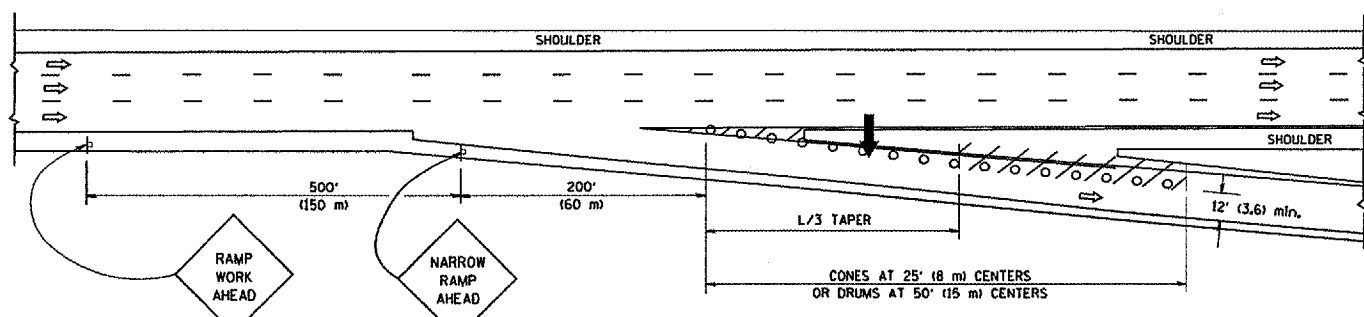
SHOULDER CLOSURE DETAILS



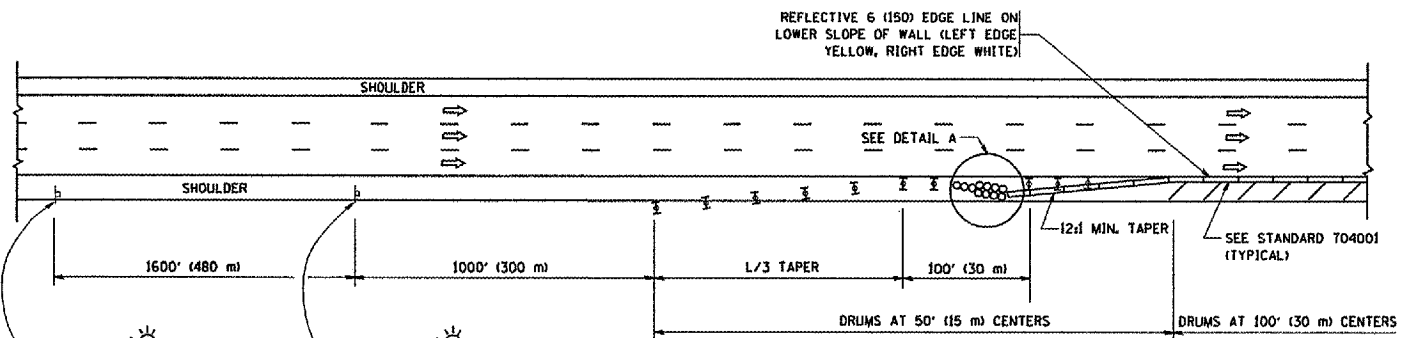
TYPICAL ENTRANCE RAMP



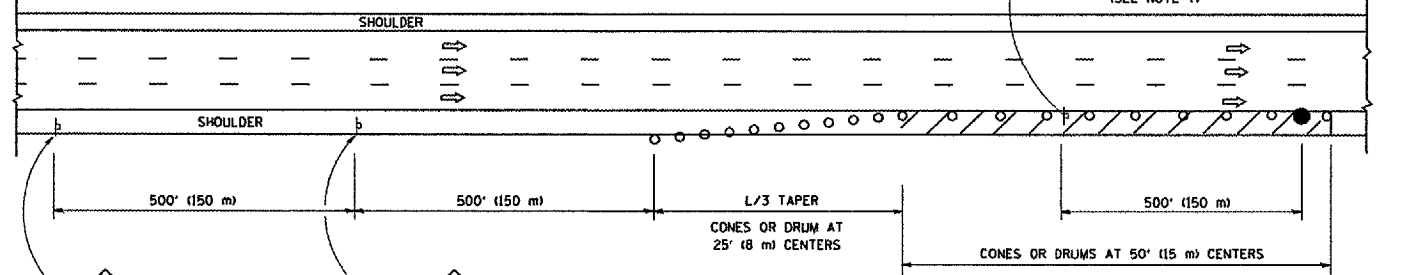
TYPICAL EXIT RAMP



TYPICAL EXIT RAMP

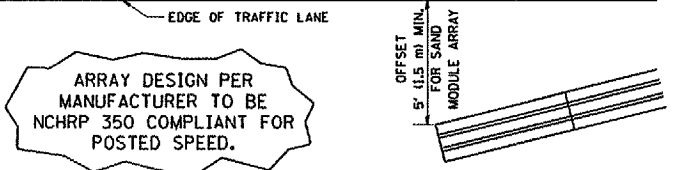
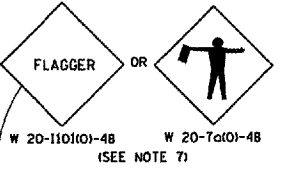


PERMANENT SHOULDER CLOSURE



DAYTIME SHOULDER CLOSURE

THIS DETAIL IS USED WHERE:
 1. VEHICLES, EQUIPMENT, WORKERS OR THEIR ACTIVITIES ENCRDACH IN AN AREA CLOSER THAN 15' (4.5 m) TO THE EDGE OF PAVEMENT FOR A PERIOD IN EXCESS OF 15 MINUTES.



DETAIL "A" IMPACT ATTENUATOR, TEMPORARY (SEE NOTE 5)

ALL DIMENSIONS ARE IN INCHES (MILLIMETERS) UNLESS OTHERWISE SHOWN.

SYMBOLS

- ➔ ARROWBOARD
- ▨ WORK AREA
- ┆ SIGN ON PORTABLE OR PERMANENT SUPPORT
- FLAGGER WITH CONTROL SIGN
- ⊥ TYPE II BARRICADE, DRUM OR VERTICAL BARRICADE WITH STEADY BURN MONO-DIRECTIONAL LIGHT
- CONE, DRUM OR BARRICADE

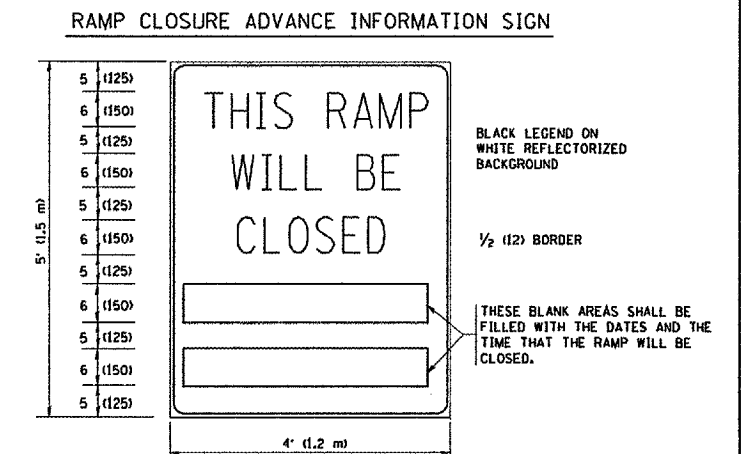
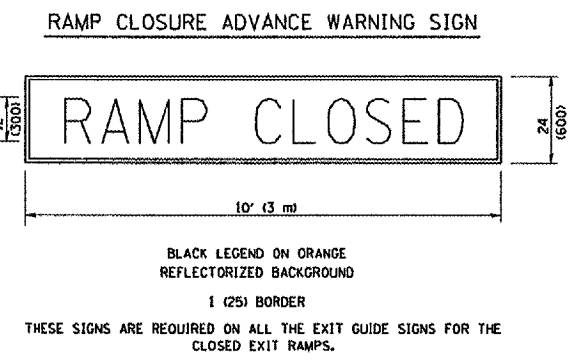
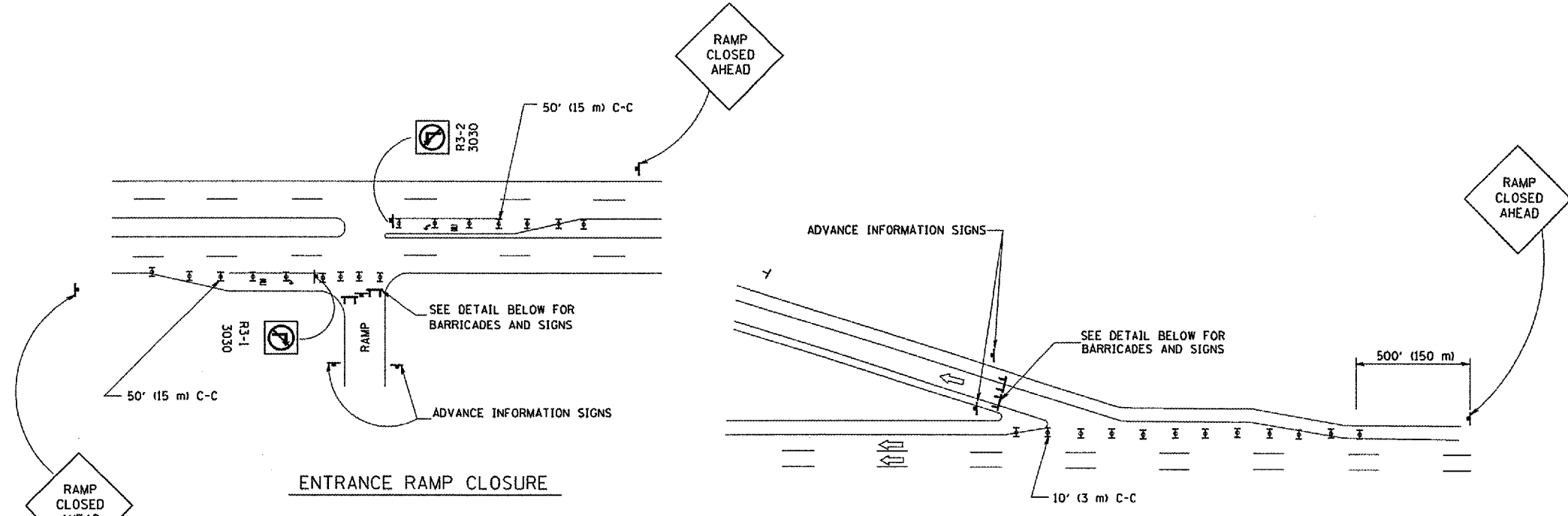
GENERAL NOTES

1. THE "L" DISTANCE EQUALS:

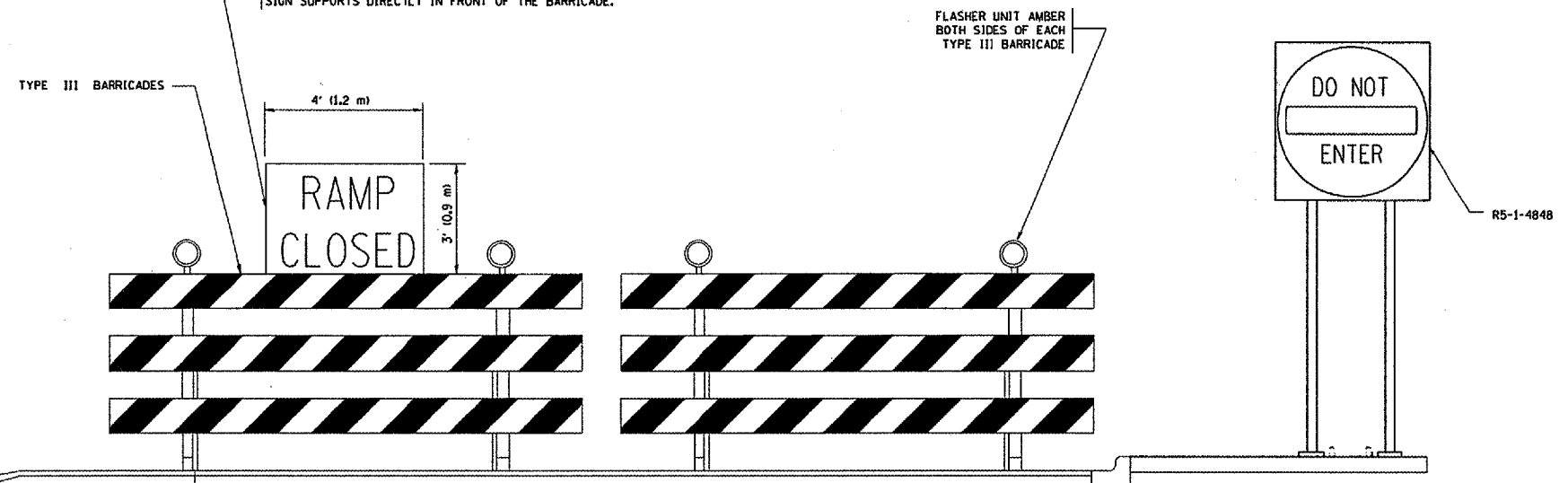
SPEED LIMIT	FORMULAS
45 mph (80 km/h) OR GREATER	METRIC ENGLISH L=0.65(WX) L=(WX)
W = WIDTH OF OFFSET IN FEET (METERS)	
S = NORMAL POSTED SPEED MPH (KM/H)	
2. PLASTIC DRUMS WITH HIGH PERFORMANCE REFLECTIVE SHEETING AND STEADY BURNING LIGHTS ARE REQUIRED FOR ALL NIGHTTIME CLOSURES.
3. ALL SIGNS SHALL BE POST MOUNTED IF THE CLOSURE TIME EXCEEDS FOUR DAYS.
4. FLASHING LIGHTS SHALL BE USED DURING THE HOURS OF DARKNESS AND SHALL BE INSTALLED ABOVE THE FIRST TWO SETS OF SIGNS.

5. THE IMPACT ATTENUATOR, TEMPORARY IS NOT REQUIRED WHEN THE TEMPORARY CONCRETE BARRIER WALL IS PROTECTED BY OR IS TIED INTO THE EXISTING GUARDRAIL. IF OFFSET IS LESS THAN 5 FEET USE "TRAFFIC BARRIER TERMINAL, TYPE III, TEMPORARY" DEVICE TO MEET NCHRP350 FOR POSTED SPEED.
6. AUTHORIZATION FROM THE DISTRICT'S BUREAU OF TRAFFIC IS REQUIRED FOR ALL FREEWAY CLOSURES.
7. THE FLAGGER AND FLAGGER SIGN ARE REQUIRED AT THE ABOVE WORK SITES WHEN:
 - a. FOUR OR MORE WORK VEHICLES ENTER THE TRAFFIC LANES IN A ONE HOUR PERIOD.
 - b. THE WORK ACTIVITY REQUIRES FREQUENT ENCROACHMENT INTO THE LANE OPEN TO TRAFFIC.
 THE FLAGGER SHALL BE STATIONED APPROXIMATELY 100' (30 m) TO 200' (60 m) IN ADVANCE OF THE WORKERS.

FILE NAME = W:\dststd\22x34\17.dgn	USER NAME = geg11n0bt	DESIGNED - J.A.F. 12-02	REVISED - J.A.F. 12-02	STATE OF ILLINOIS DEPARTMENT OF TRANSPORTATION	TRAFFIC CONTROL DETAILS FOR FREEWAY SHOULDER CLOSURES AND PARTIAL RAMP CLOSURES	SECTION 2007-009 GR	COUNTY Various	TOTAL SHEETS 27	SHEET NO. 25	
PLOT SCALE = 50,000' / IN.	DRAWN - D.W.S.	REVISED - 04-03	REVISED - J.A.F. 12-06		SCALE: NONE	SHEET NO. 1 OF 1 SHEETS	STA. TO STA.	FED. ROAD DIST. NO. 1 (ILLINOIS) FED. AID PROJECT		
PLOT DATE = 1/4/2008	CHECKED -	REVISED - S.P.B. 01-07								
	DATE - 11-96									



THE "RAMP CLOSED" SIGN SHALL BE B/W WITH 8 (200) CAPS. IF A TYPE III BARRICADE WITH AN ATTACHED SIGN PANEL WHICH MEETS NCHRP 350 IS NOT AVAILABLE, THE SIGNS MAY BE MOUNTED ON NCHRP 350 TEMPORARY SIGN SUPPORTS DIRECTLY IN FRONT OF THE BARRICADE.



DETAIL FOR REQUIRED BARRICADES & SIGNS

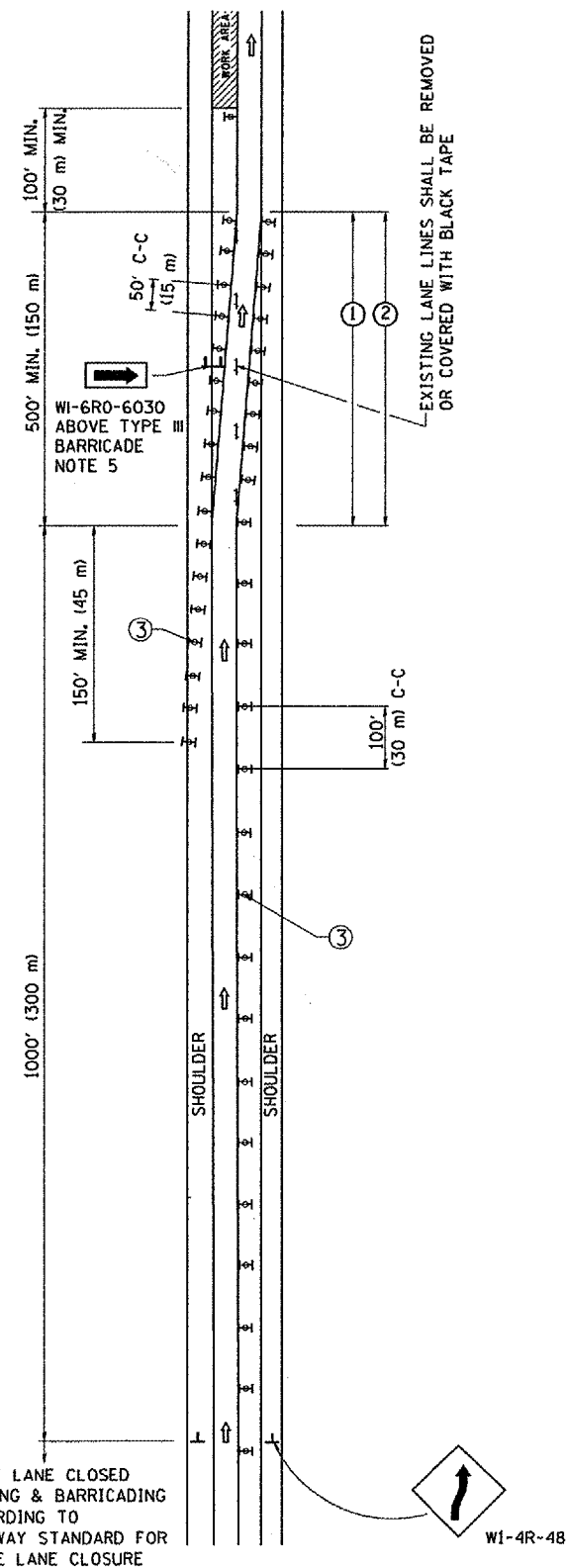
- SYMBOLS**
- ▬ TYPE II BARRICADE, DRUM OR VERTICAL BARRICADE WITH STEADY BURN MONO-DIRECTIONAL LIGHT
 - ⌈ TYPE III BARRICADE WITH FLASHING LIGHT

- GENERAL NOTES:**
1. CONES MAY BE SUBSTITUTED FOR DRUMS OR TYPE II BARRICADES DURING DAY OPERATIONS. CONES SHALL BE A MINIMUM OF 28 (700) HIGH.
 2. STEADY BURN LIGHTS WILL NOT BE REQUIRED FOR DAY OPERATIONS.
 3. A FLAGGER SHALL BE POSITIONED AT EACH CLOSED RAMP THAT IS OPEN TO CONSTRUCTION VEHICLES.
 4. ALL ROUTE MARKERS AND TRAILBLAZER ASSEMBLIES WHICH DIRECT MOTORISTS TO A CLOSED ENTRANCE RAMP SHALL BE COVERED.
 5. THE SIGNING AND BARRICADING WHICH IS REQUIRED BY THIS DETAIL SHALL BE INCLUDED IN THE COST OF TRAFFIC CONTROL AND PROTECTION (EXPRESSWAYS).
 6. AUTHORIZATION FROM THE DISTRICT'S BUREAU OF TRAFFIC IS REQUIRED FOR ALL RAMP CLOSURES.
 7. THE RAMP CLOSURE ADVANCE INFORMATION SIGNS SHALL BE ERECTED IF THE CLOSURE TIME EXCEEDS TWENTY-FOUR (24) HOURS. ADDITIONAL ADVANCE WARNING SIGNS ON EXIT GUIDE SIGNING WILL BE REQUIRED FOR EXIT RAMP CLOSURES THAT EXCEED TWENTY-FOUR (24) HOURS IN LENGTH.

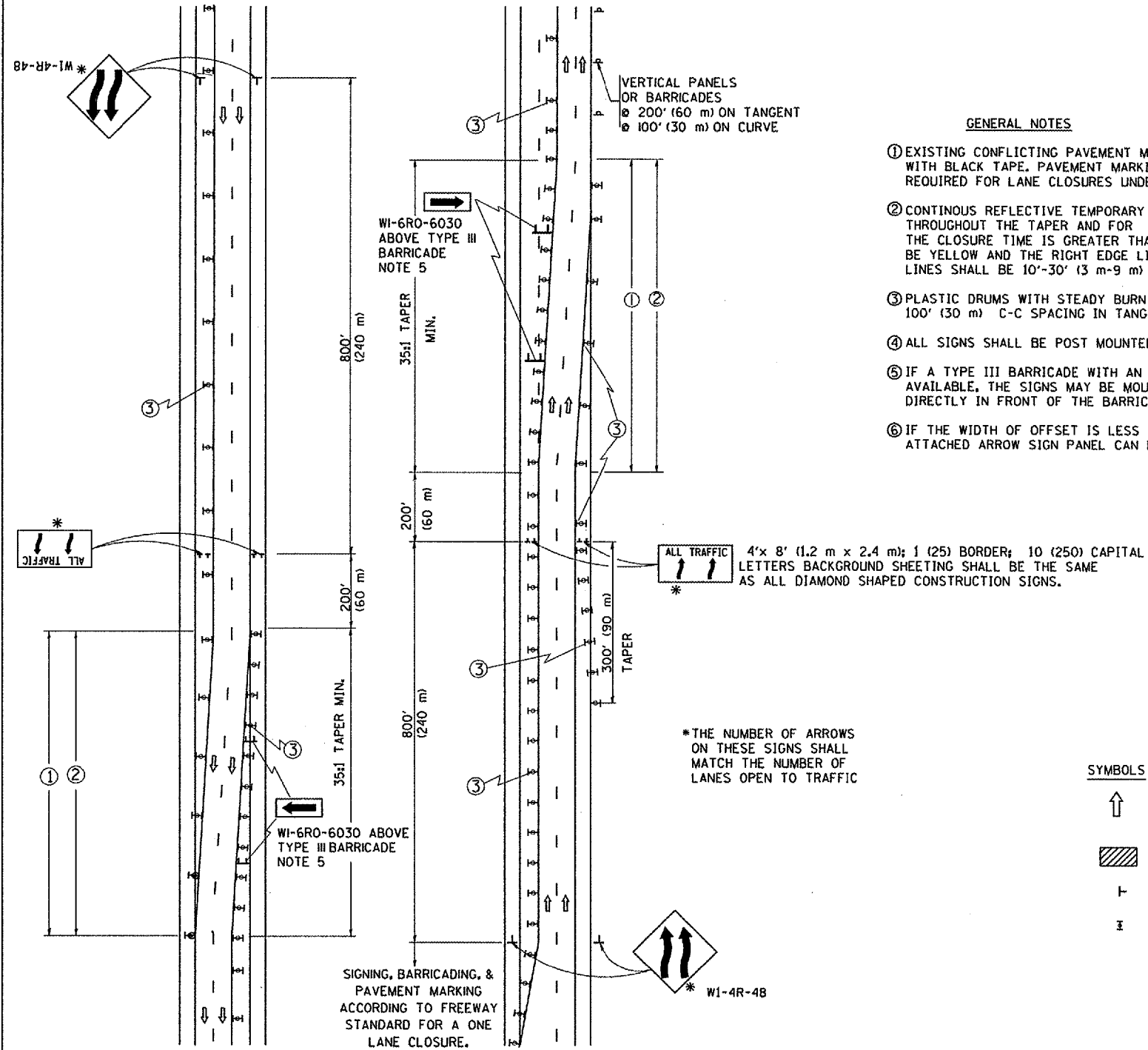
ALL DIMENSIONS ARE IN INCHES (MILLIMETERS) UNLESS OTHERWISE SHOWN.

FILE NAME * W:\diststd\22x34\to88.dgn	USER NAME = gaglianob	DESIGNED - DWS	REVISED - DWS 12-94	STATE OF ILLINOIS DEPARTMENT OF TRANSPORTATION	FREEWAY ENTRANCE AND EXIST RAMP CLOSURE DETAILS			F.A. R.T.E.	SECTION	COUNTY	TOTAL SHEETS NO.	SHEET NO.
	PLOT SCALE = 50.000' / 1/4"	CHECKED -	REVISED - DWS/JAF 12-02					2007-009 GR	Various	27	26	
PLOT DATE = 1/4/2008	DATE - 02-83	REVISED - JAF 02-06	REVISED - SPB 01-07	SCALE: NONE	SHEET NO. 1 OF 1 SHEETS	STA.	TO STA.	TC-08		CONTRACT NO.		
								FED. ROAD DIST. NO. 1 ILLINOIS FED. AID PROJECT				

SINGLE LANE WEAVE



MULTI-LANE WEAVE



GENERAL NOTES

- ① EXISTING CONFLICTING PAVEMENT MARKING LINES SHALL BE REMOVED OR COVERED WITH BLACK TAPE. PAVEMENT MARKING REMOVAL OR BLACK TAPE SHALL NOT BE REQUIRED FOR LANE CLOSURES UNDER 24 HOURS IN DURATION.
- ② CONTINUOUS REFLECTIVE TEMPORARY PAVEMENT MARKING TAPE SHALL BE PLACED THROUGHOUT THE TAPER AND FOR 300' (90 m) ALONG SIDE THE WORK AREA WHERE THE CLOSURE TIME IS GREATER THAN FOURTEEN DAYS. THE LEFT EDGE LINE SHALL BE YELLOW AND THE RIGHT EDGE LINE SHALL BE WHITE. FOR MULTI-LANE WEAVE LANE LINES SHALL BE 10'-30' (3 m-9 m) SKIP DASH, WHITE.
- ③ PLASTIC DRUMS WITH STEADY BURN LIGHTS AT 50' (15 m) C-C SPACING IN TAPERS AND 100' (30 m) C-C SPACING IN TANGENTS.
- ④ ALL SIGNS SHALL BE POST MOUNTED IF THE CLOSURE TIME EXCEEDS FOUR DAYS.
- ⑤ IF A TYPE III BARRICADE WITH AN ATTACHED SIGN PANEL WHICH MEETS NCHRP 350 IS NOT AVAILABLE, THE SIGNS MAY BE MOUNTED ON NCHRP 350 TEMPORARY SIGN SUPPORTS DIRECTLY IN FRONT OF THE BARRICADE.
- ⑥ IF THE WIDTH OF OFFSET IS LESS THAN 6' THEN THE TYPE III BARRICADE WITH ATTACHED ARROW SIGN PANEL CAN BE ELIMINATED IN THE TAPER AREAS.

SYMBOLS

- ↑ DIRECTION OF TRAFFIC
- ▨ WORK AREA
- ⊥ SIGN ON PORTABLE OR PERMANENT SUPPORT
- ⊞ TYPE II BARRICADE, DRUM OR VERTICAL BARRICADE WITH MONO-DIRECTIONAL STEADY BURNING LIGHT

ALL DIMENSIONS ARE IN INCHES (MILLIMETERS) UNLESS OTHERWISE SHOWN

FILE NAME = W:\data\d22x34\td\p3.dgn	USER NAME = gogtanobs	DESIGNED - DWS	REVISED - DWS 11-96	STATE OF ILLINOIS DEPARTMENT OF TRANSPORTATION	TRAFFIC CONTROL DETAILS FOR FREEWAY SINGLE & MULTI-LANE WEAVE			F.A. RTE.	SECTION	COUNTY	TOTAL SHEETS	SHEET NO.
		DRAWN -	REVISED - JAF 01-03		SCALE: NONE	SHEET NO. 1 OF 1 SHEETS	STA.	TO STA.	2007-009 GR	Various	21	27
		CHECKED -	REVISED - JAF 02-06					TC-09		CONTRACT NO.		
		DATE - 02-87	REVISED - SPB 01-07					FED. ROAD DIST. NO. 1 (ILLINOIS) FED. AID PROJECT				