

STATE OF ILLINOIS
DEPARTMENT OF TRANSPORTATION
DIVISION OF HIGHWAYS

PROPOSED HIGHWAY PLANS

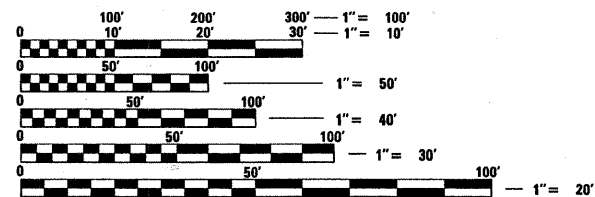
F.A.U. ROUTE 1339: IL 53 (BIESTERFIELD RD)
OVER I-290
SECTION: 0101-311 HB-I
BRIDGE PARAPET REPLACEMENT
COOK COUNTY
C-91-213-07

F.A.U. RTE.	SECTION	COUNTY	TOTAL SHEETS	SHEET NO.
1339	0101-311 HB-I	COOK	12	1
FED. ROAD DIST. NO.	ILLINOIS	CONTRACT NO.	60C44	

FOR INDEX OF SHEETS, SEE SHEET NO. 2

IMPROVEMENT IS LOCATED
IN ELK GROVE VILLAGE

LOCATION OF IMPROVEMENT
SN 016-0960

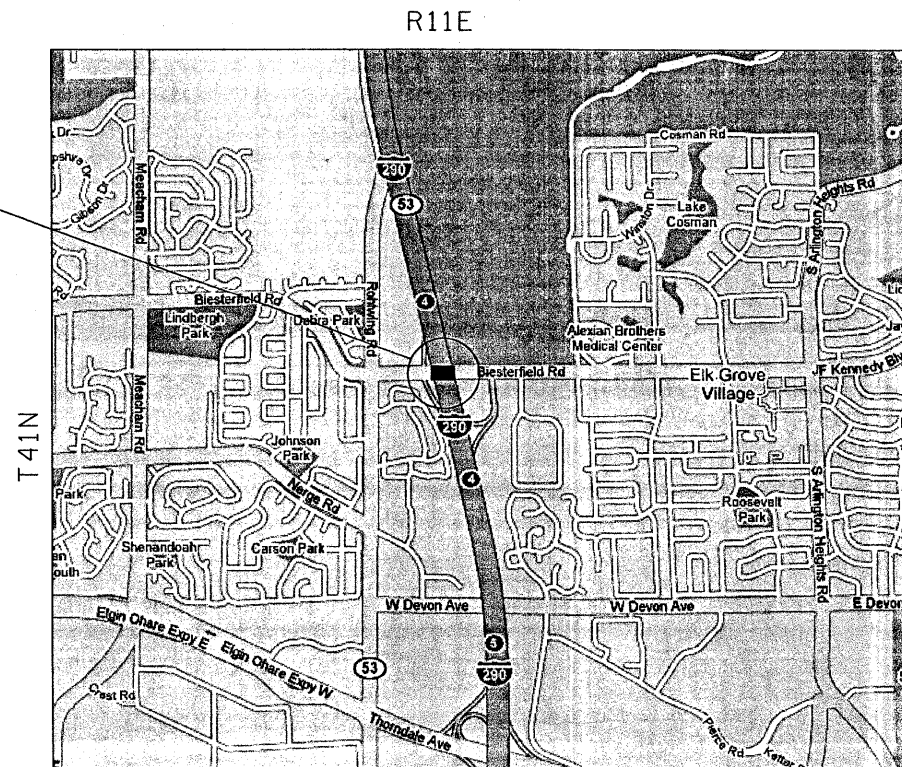


FULL SIZE PLANS HAVE BEEN PREPARED USING STANDARD ENGINEERING SCALES. REDUCED SIZED PLANS WILL NOT CONFORM TO STANDARD SCALES. IN MAKING MEASUREMENTS ON REDUCED PLANS, THE ABOVE SCALES MAY BE USED.

J.U.L.I.E.
JOINT UTILITY LOCATION INFORMATION FOR EXCAVATION
1-800-892-0123
OR 811

PROJECT ENGINEER - BOB BORO (847) 705-4178
PROJECT MANAGER - KEN ENG

CONTRACT NO. 60C44

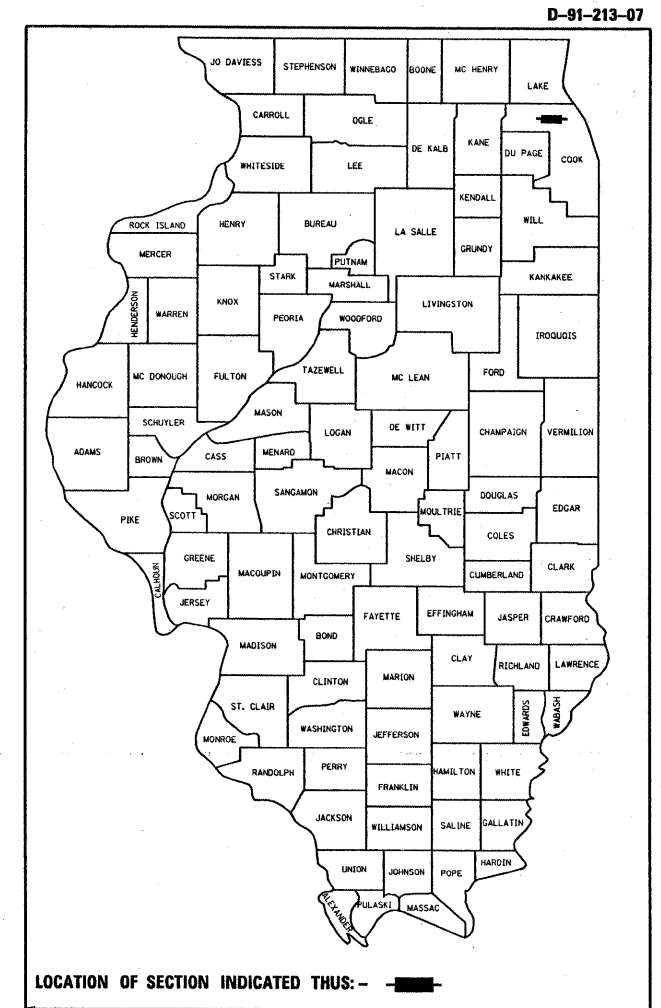


ELK GROVE AND JEFFERSON TOWNSHIPS



TRAFFIC DATA I-290
2005 ADT = 167,700
POSTED SPEED = 55 MPH

TRAFFIC DATA IL 53 (BIESTERFIELD RD.)
2005 ADT = 35,000
POSTED SPEED = 40 MPH



LOCATION OF SECTION INDICATED THUS: - [black rectangle] -

STATE OF ILLINOIS
DEPARTMENT OF TRANSPORTATION
DIVISION OF HIGHWAYS

SUBMITTED FEBRUARY 13, 20 08

Diana M. O'Keefe
DEPUTY DIRECTOR OF HIGHWAYS, REGION ENGINEER

March 21, 20 08

Eric E. Harbeck
INTERIM ENGINEER OF DESIGN AND ENVIRONMENT

March 21, 20 08

Christina M. Reed
DIRECTOR OF HIGHWAYS, CHIEF ENGINEER

PRINTED BY THE AUTHORITY
OF THE STATE OF ILLINOIS