

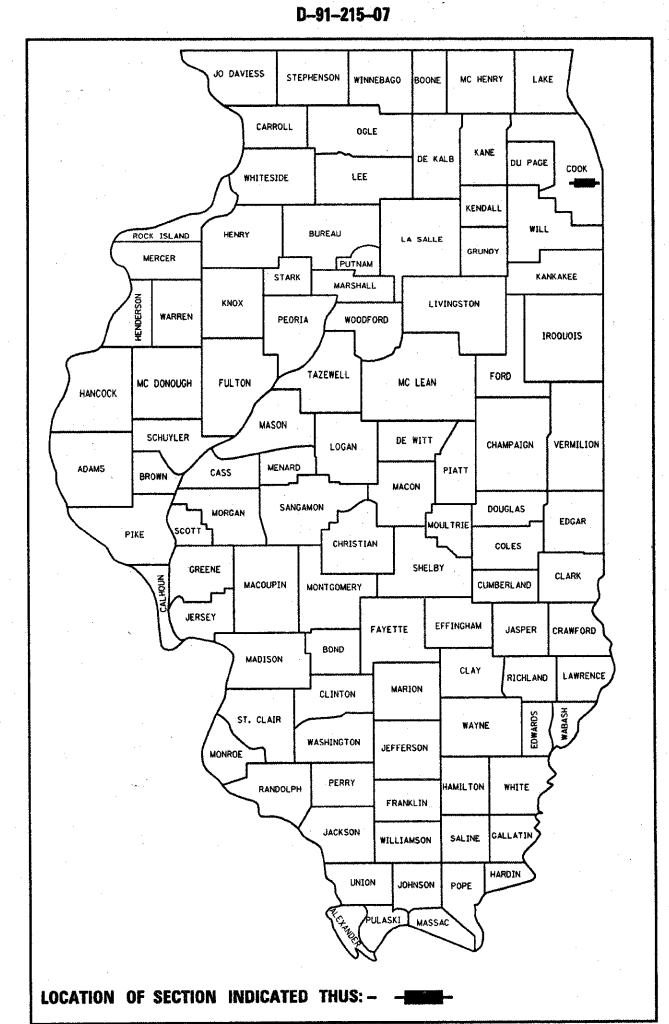
STATE OF ILLINOIS
 DEPARTMENT OF TRANSPORTATION
 DIVISION OF HIGHWAYS

**PROPOSED
 HIGHWAY PLANS**
 F.A.U. ROUTE 1438: TAYLOR STREET
 OVER FAI - 90/94 (DAN RYAN EXPY)
 SECTION 2626.23 B-I
 BRIDGE PARAPET & JOINT REPAIRS
 COOK COUNTY
 C-91-215-07

F.A.U. RTE.	SECTION	COUNTY	TOTAL SHEETS	SHEET NO.
1438	2626.23 B-I	COOK	12	1
FED. ROAD DIST. NO.		ILLINOIS	CONTRACT NO. 60C46	

FOR INDEX OF SHEETS, SEE SHEET NO. 2

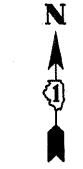
THE IMPROVEMENT IS LOCATED IN THE CITY OF CHICAGO



LOCATION OF SECTION INDICATED THUS: - [black rectangle] -



IMPROVEMENT LOCATION
 SN 016-1165 & SN 016-2535



TRAFFIC DATA
 I - 90/94 (DAN RYAN EXPY)
 2006 ADT = 233,000
 SPEED LIMIT = 45 MPH
 TAYLOR STREET
 2006 ADT = 8,800
 SPEED LIMIT = 30 MPH

C.U.A.N.: CHICAGO UTILITY
 ALERT NETWORK
 (312) 774 - 7000

PROJECT ENGINEER ROBERT BORO (847) 705 - 4178
 PROJECT MANAGER KEN ENG

CONTRACT NO. 60C46

CHICAGO TOWNSHIP

STATE OF ILLINOIS
 DEPARTMENT OF TRANSPORTATION
 DIVISION OF HIGHWAYS

SUBMITTED MARCH 7, 2008

Diane M. O'Keefe
 DEPUTY DIRECTOR OF HIGHWAYS, REGION ENGINEER
 March 21, 2008

Eric E. Harrel
 INTERIM ENGINEER OF DESIGN AND ENVIRONMENT
 March 21, 2008

Christine M. Reed
 DIRECTOR OF HIGHWAYS, CHIEF ENGINEER

PRINTED BY THE AUTHORITY
 OF THE STATE OF ILLINOIS