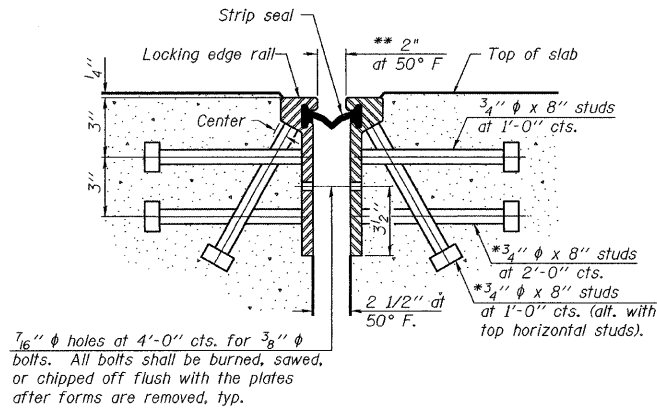
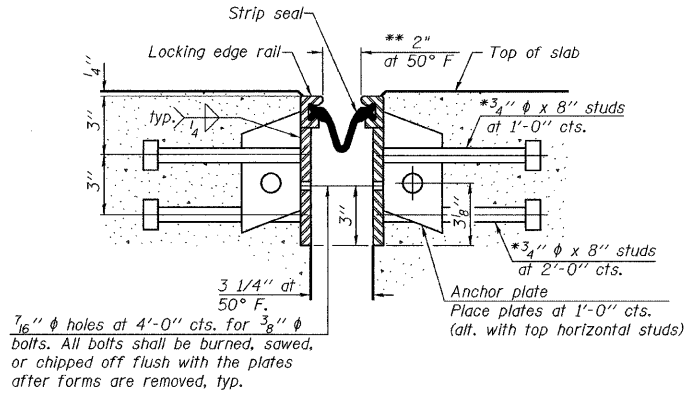


*Granular or solid flux filled headed studs conforming to Article 1006.32 of the Std. Specs., automatically end welded.
 **When joint is fixed, dimension is set at 1 1/2".

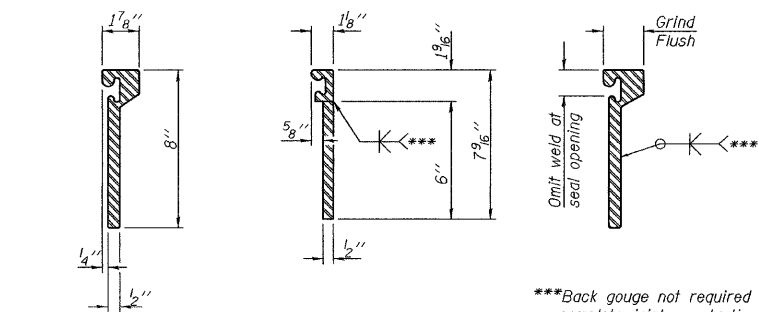


SECTION THRU ROLLED RAIL JOINT



SECTION THRU WELDED RAIL JOINT

Notes:
 The strip seal shall be made continuous and shall have a minimum thickness of 1/4". The configuration of the strip seal shall match the configuration of the Locking Edge Rails. Open or "webbed" strip seal gland configurations are not permitted. The gland shall be sized for a maximum rated movement of 4 inches.
 The height and thickness of the Locking Edge Rails and matching strip seal may vary from manufacturer to manufacturer. Flanged edge rails will not be allowed. Locking Edge Rails may be spliced at slope discontinuities and stage construction joints.
 The manufacturer's recommended installation methods shall be followed. The joint opening and deck dimensions detailed on the superstructure are based on a rolled rail expansion joint. If the Contractor elects to use the welded rail expansion joint, the opening and deck dimensions shall be modified according to the dimensions detailed on this sheet. Required modifications shall be made at no additional cost to the State.
 All steel components shall be galvanized after fabrication according to Article 520.03 of the Standard Specifications.

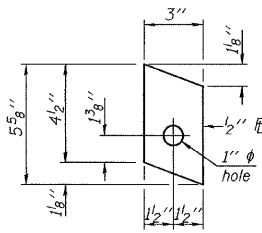


ROLLED (EXTRUDED) RAIL WELDED RAIL

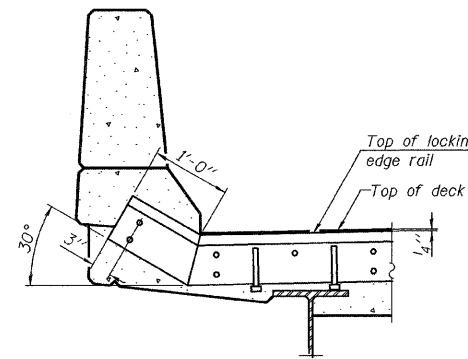
LOCKING EDGE RAIL SPLICE

The inside of the locking edge rail groove shall be free of weld residue.

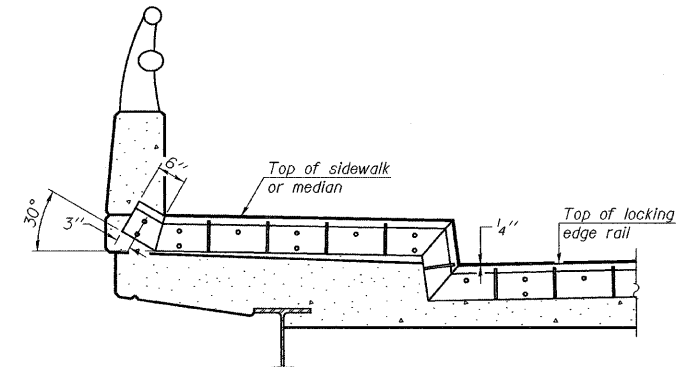
***Back gouge not required if complete joint penetration is verified by mock-up.



ANCHOR PLATE (for welded rail)



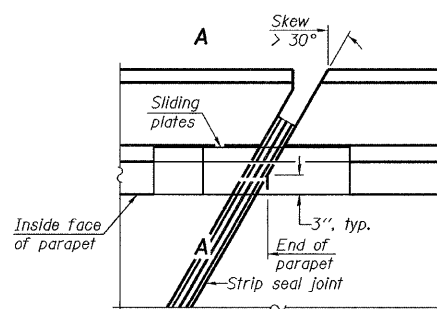
AT PARAPET



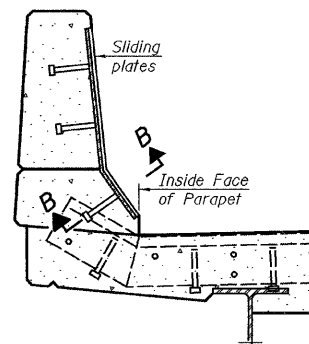
AT SIDEWALK OR MEDIAN

Shorter plates with a single row of studs at 12" cts. may be necessary on medians which are shallower than 9". See manufacturer's recommendation.

LOCKING EDGE RAILS



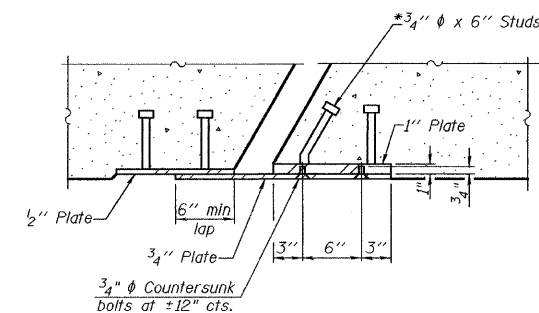
PLAN



SECTION A-A

POINT BLOCK DETAILS (for skews > 30°)

TYPICAL END TREATMENTS



SECTION B-B

BILL OF MATERIAL

Item	Unit	Total
Preformed Joint Strip Seal	Foot	35.7

EJ-SSJ 9-3-07

FILE NAME = c:\projects\struct1\016-1165.dgn	USER NAME = hamdanah	DESIGNED -	REVISED -	STATE OF ILLINOIS DEPARTMENT OF TRANSPORTATION	TAYLOR STREET OVER I-90 / 94 (DAN RYAN EXPRESSWAY) PREFORMED JOINT STRIP SEAL S.N. 016-1165 AND S.N. 016-2535		F.A.U. RTE. 1438	SECTION 2626.23 B-I	COUNTY COOK	TOTAL SHEETS 12	SHEET NO. 8
PLOT SCALE = 50.0000 "/ IN.	CHECKED -	REVISED -	REVISED -		SCALE: NONE	SHEET NO. 5 OF 5 SHEETS	STA.	FED. ROAD DIST. NO. 1 ILLINOIS FED. AID PROJECT		CONTRACT NO. 60C46	
PLOT DATE = 3/19/2008	DATE -	REVISED -	REVISED -		TO STA.						