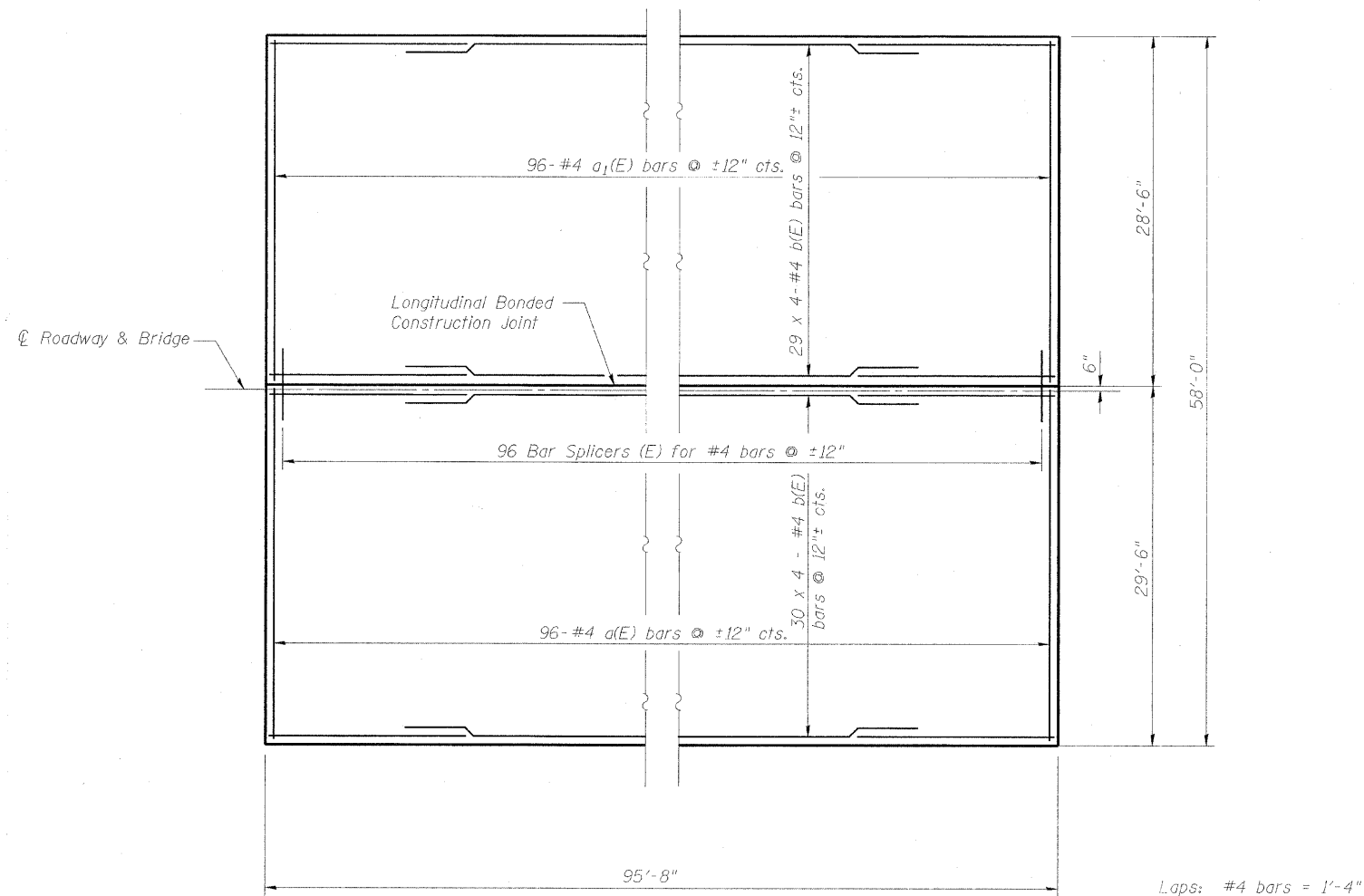


STATE OF ILLINOIS
DEPARTMENT OF TRANSPORTATION

ROUTE NO.	SECTION	COUNTY	TOTAL SHEETS	SHEET NO.	SHEET NO. 9 16 SHEETS
FAP 311	625X-B-R-1	DuPage	29	17	
FED. ROAD DIST. NO. 7	ILLINOIS	FED. AID PROJECT-			

Contract #60C53



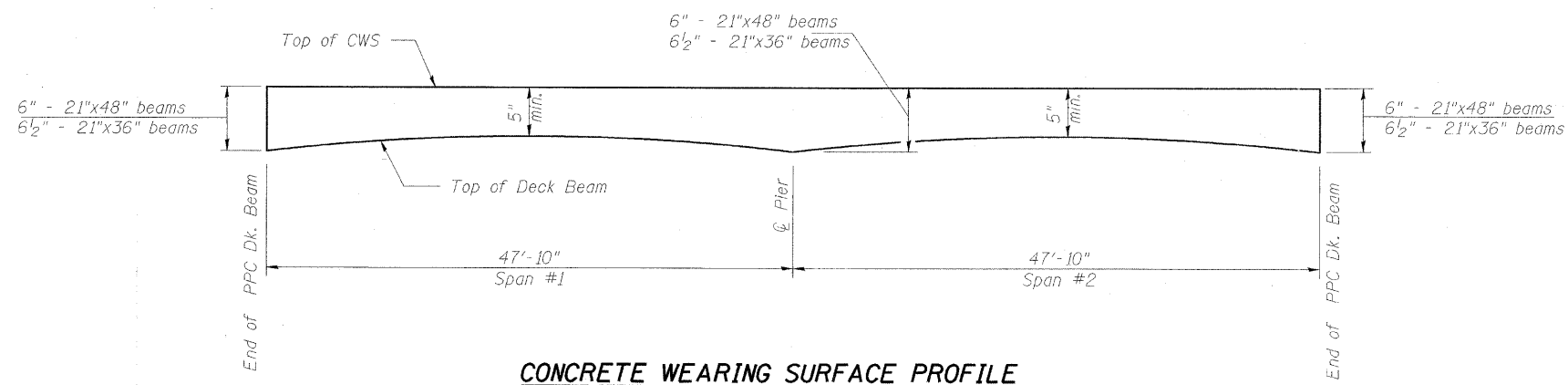
PLAN

Laps: #4 bars = 1'-4"

BILL OF MATERIAL

Concrete Wearing Surface, Sidewalks and Parapets
Sheets 9, 10 and 11 of 16

Bar	No.	Size	Length	Shape	
a(E)	96	#4	29'-3"	—	
a ₁ (E)	96	#4	28'-3"	—	
a ₂ (E)	192	#4	5'-8"	—	
b(E)	316	#4	24'-11"	—	
d(E)	192	#4	3'-5"	┌	
d ₁ (E)	192	#6	3'-5"	┌	
d ₂ (E)	88	#4	2'-0"	┌	
d ₃ (E)	56	#5	3'-3"	┌	
e(E)	72	#4	15'-7"	—	
e ₁ (E)	24	#4	20'-6"	—	
e ₂ (E)	24	#4	6'-2"	—	
Reinforcement Bars, Epoxy Coated				Pound	12,580
Concrete Wearing Surface, 5"				Sq. Yd.	617
Concrete Superstructure				Cu. Yd.	74.8



CONCRETE WEARING SURFACE PROFILE

CONCRETE WEARING SURFACE
F.A.P. 311 (US RTE. 34)
OVER W BRANCH OF DU PAGE RIVER
SECTION 652X-B-R-1,
DU PAGE COUNTY, STA. 1701+11
STRUCTURE NO. 022-0040

DESIGNED	DDB
CHECKED	LLV
DRAWN	JSD
CHECKED	DDB

STS CONSULTANTS
111 NE Jefferson Ave.
Peoria, Illinois 61602
Ph(309)676-8464
FAX(309)676-5445
IL Design Firm Reg. No. 184-001518