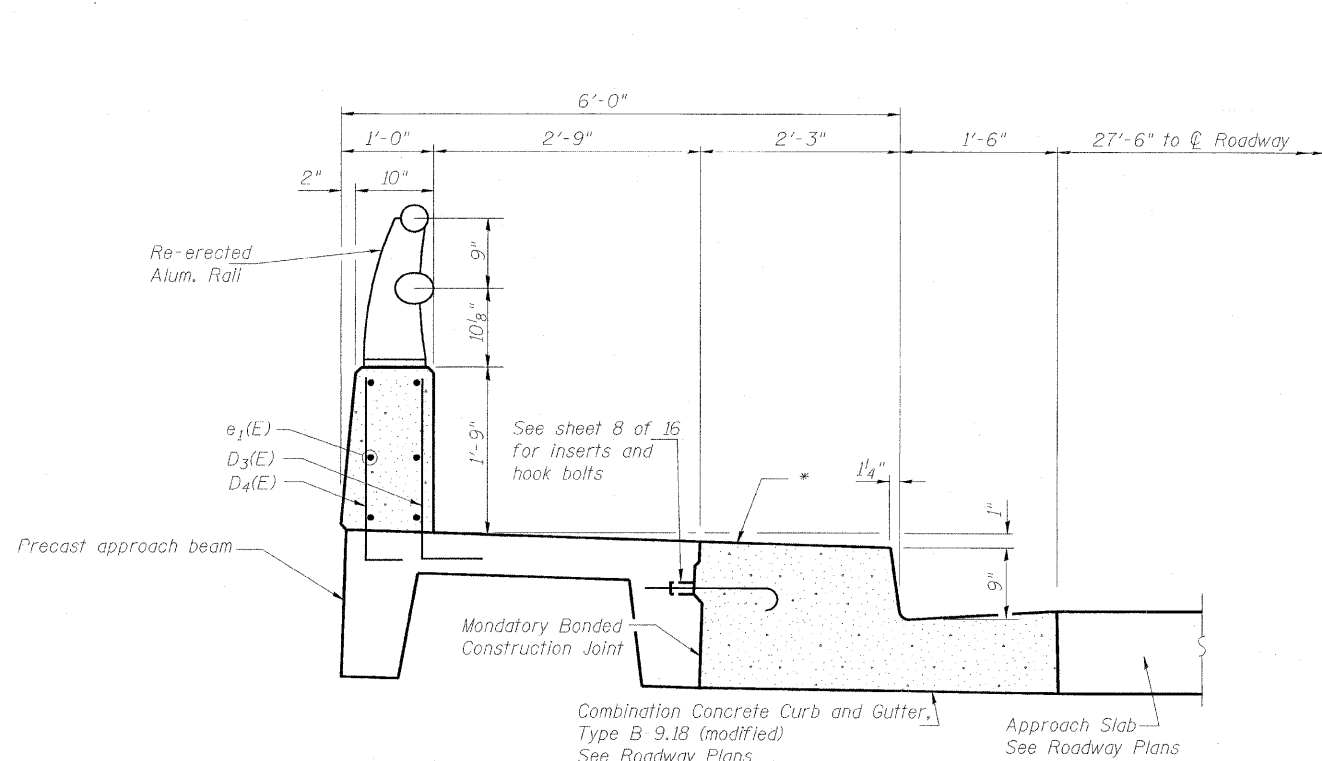
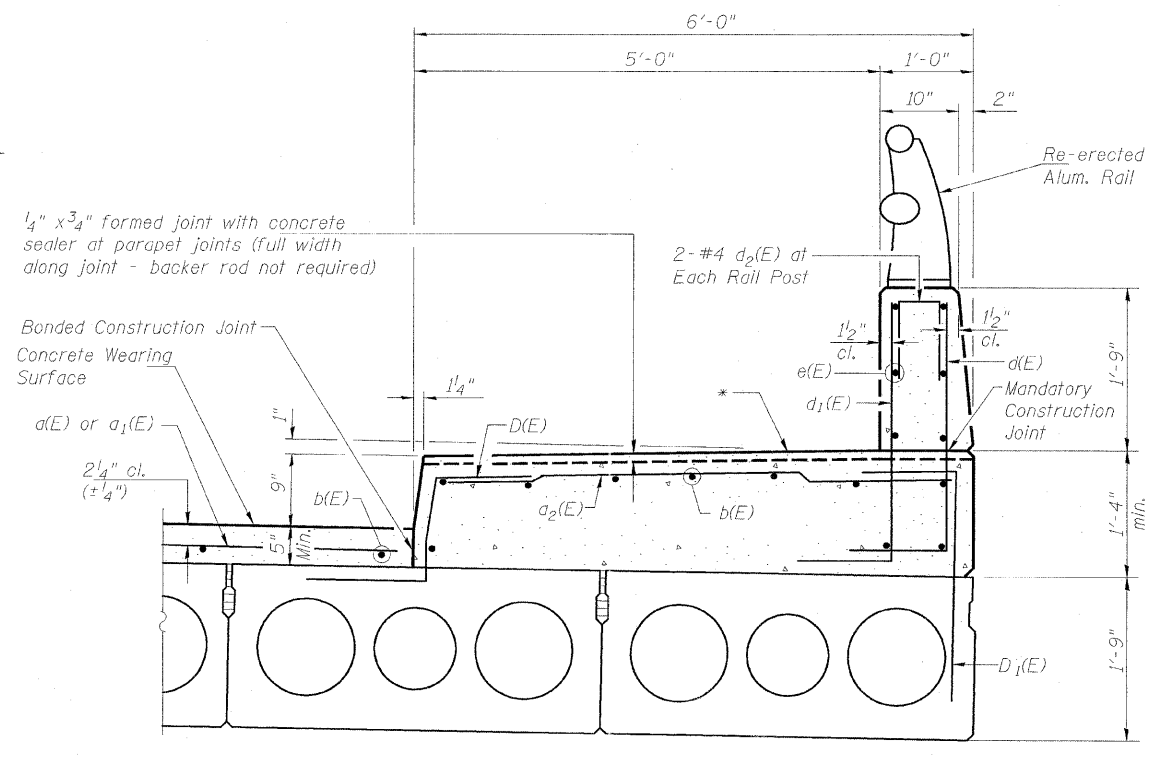


STATE OF ILLINOIS  
DEPARTMENT OF TRANSPORTATION

ROUTE NO.	SECTION	COUNTY	CONTRACT NO.	SHEET NO.	SHEET NO. 10 16 SHEETS
FAP 311	625X-B-R-1	DuPage	29	18	
FED. ROAD DIST. NO. 7	ILLINOIS	FED. AID PROJECT-	Contract #60053		

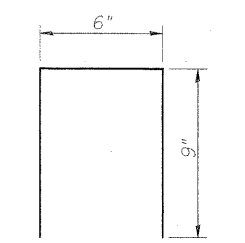


**SECTION THRU PARAPETS AT APPROACH SLABS**

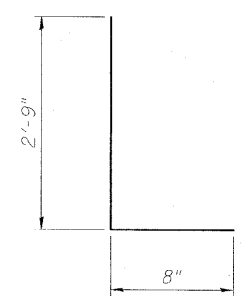


**SECTION THRU SIDEWALKS & PARAPETS ON BRIDGE**

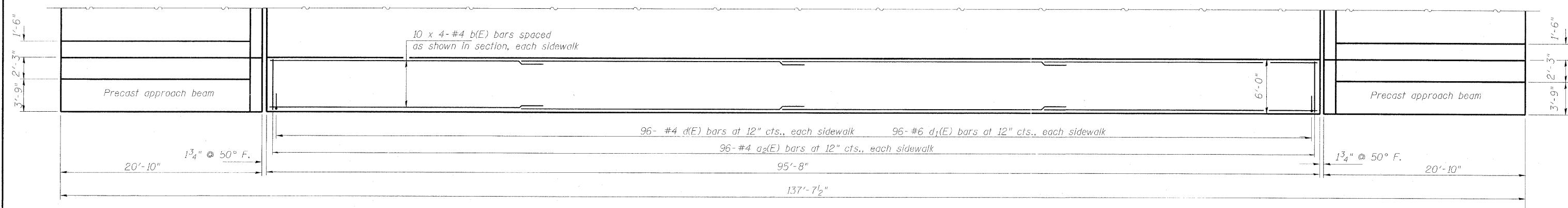
\* Concrete finish for sidewalk area shall be in accordance with section 503.16(b)(1) of the Standard Specifications



**BAR d2(E)**



**BAR d(E) & d1(E)**



**SIDEWALK PLAN**  
East side shown, west side similar

**BAR LAPS**  
#4 bars - 1'-4"

DESIGNED	DDB
CHECKED	LLV
DRAWN	JSD
CHECKED	DDB

**SIDEWALKS**  
F.A.P. 311 (US RTE. 34)  
OVER W BRANCH OF DU PAGE RIVER  
SECTION 625X-B-R-1,  
DU PAGE COUNTY, STA. 1701+11  
STRUCTURE NO. 022-0040

**STS CONSULTANTS**  
111 NE Jefferson Ave.  
Peoria, Illinois 61602  
Ph(309)676-8464  
FAX(309)676-5445  
IL Design Firm Reg. No. 184-001518