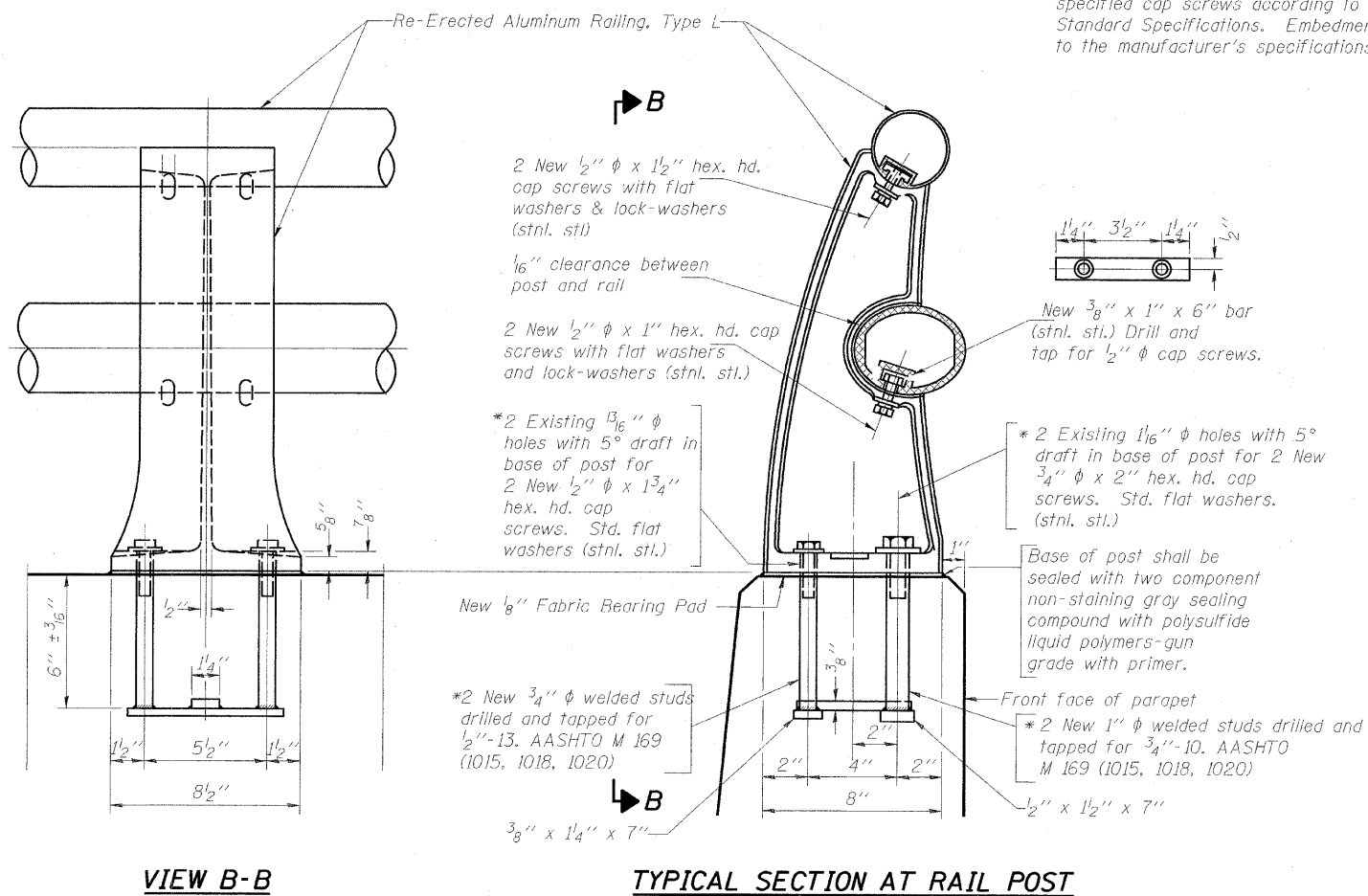


STATE OF ILLINOIS  
DEPARTMENT OF TRANSPORTATION

ROUTE NO.	SECTION	COUNTY	TOTAL SHEETS	SHEET NO.
FAP 311	625X-B-R-1	DuPage	29	20
FED. ROAD DIST. NO. 7	ILLINOIS	FED. AID PROJECT		

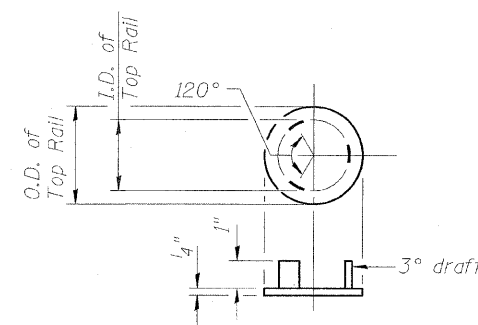
SHEET NO. 12  
16 SHEETS

Contract #60C53



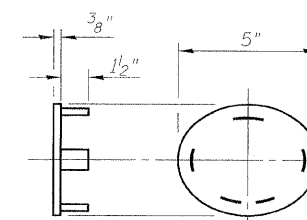
RAIL POST DETAILS

\* In lieu of the cast-in-place anchor device shown, the Contractor has the option of drilling and setting stainless steel anchor rods of the same diameter and grade as the specified cap screws according to Article 509.06 of the Standard Specifications. Embedment shall be according to the manufacturer's specifications.



NEW CAST END CAP

Included in cost of Removing and Re-erecting Existing Railing  
For Top Rail  
(4 Required)



NEW CAST END CAP

Included in cost of Removing and Re-erecting Existing Railing  
For Bottom Rail  
DRIVE FIT TYPE  
(4 Required)

BILL OF MATERIAL

Item	Unit	Quantity
Removing and Re-erecting Existing Railing.	Foot	249

DESIGNED	DDB
CHECKED	LLV
DRAWN	JSD
CHECKED	DDB

(7'-0" to 10'-0" Post spacing)

Notes:

- All Posts shall be normal to parapet.
- Provide 1-1/8" and 2-1/16" Aluminum Shims for 25% of the Posts. Rail elements shall be parallel to Grade-high spots will be ground and low spots shimmed.
- See Special Provision for Removing and Re-erecting Existing Railing.

RAILING  
F.A.P. 311 (US RTE. 34)  
OVER W BRANCH OF DU PAGE RIVER  
SECTION 652X-B-R-1,  
DU PAGE COUNTY, STA. 1701+11  
STRUCTURE NO. 022-0040

