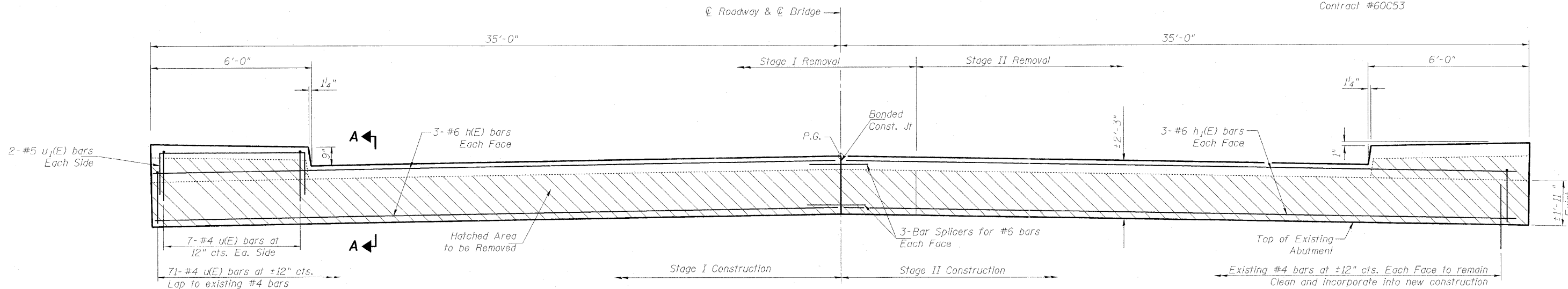


STATE OF ILLINOIS
DEPARTMENT OF TRANSPORTATION

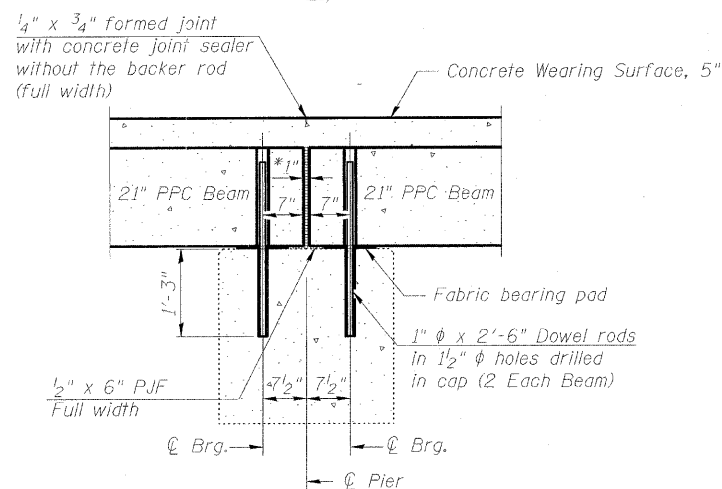
ROUTE NO.	SECTION	COUNTY	TOTAL SHEETS	SHEET NO.	SHEET NO. 14 16 SHEETS
FAP 311	625X-B-R-1	DuPage	29	22	
FED. ROAD DIST. NO. 7		S.I. INCHES		FED. AID PROJECT	

Contract #60C53



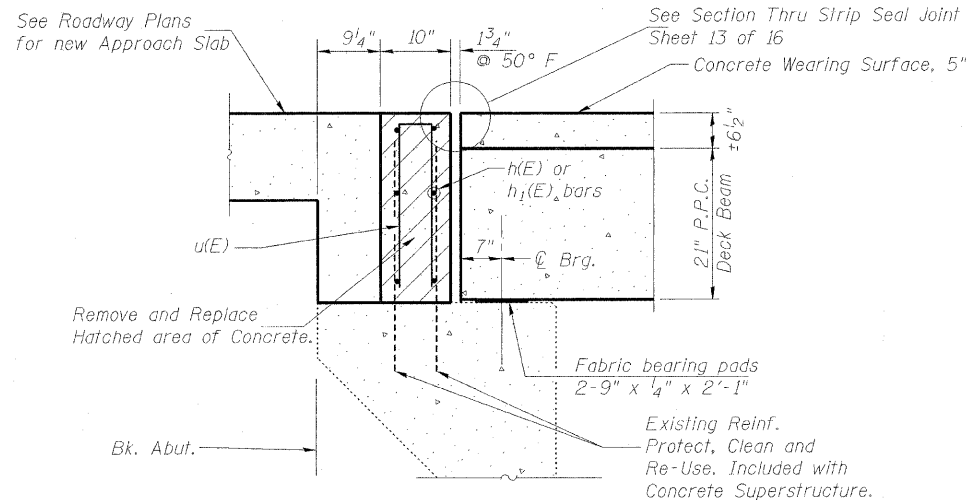
ABUTMENT ELEVATION

Looking east - typical both abutments



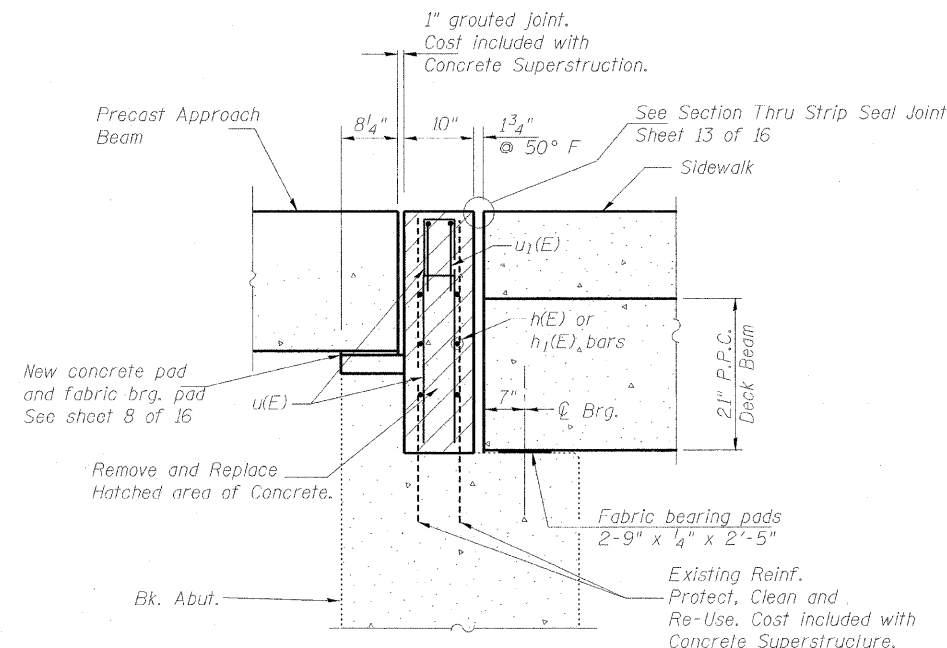
SECTION THRU FIXED PIER

*1" Jt. shall be filled with non-shrink grout. 1" dimension may vary to accommodate tolerance in beam lengths.



SECTION THRU NORTH AND SOUTH ABUTMENT

(at roadway)



SECTION THRU NORTH AND SOUTH ABUTMENT

(near end of abut. at approach beams)

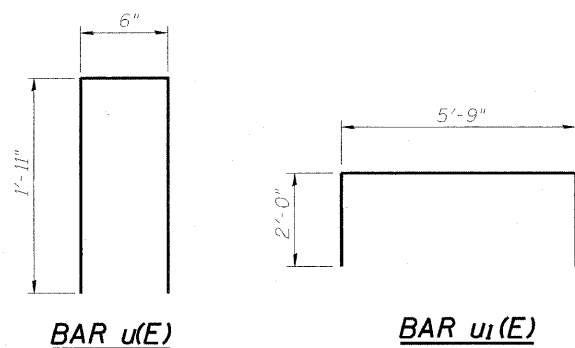
BILL OF MATERIAL - 2 ABUTS

Bar	No.	Size	Length	Shape	
h(E)	12	#6	34'-8"	—	
h1(E)	12	#6	34'-8"	—	
u(E)	170	#4	4'-4"	—	
u1(E)	8	#5	9'-9"	—	
Concrete Superstructure				Cu. Yd.	10.3
Reinforcement Bars, Epoxy Coated				Lb.	1,820

NOTES

- After beams have been erected, holes shall be drilled into substructure and anchor dowels placed. Dowel holes shall be filled with non-shrink grout to top of beam and allowed to cure min. 24 hrs. prior to grouting the shear keys.
- Existing dowel rods shall be burned off flush with the top of the abutment or pier.
- Hatched area concrete shall be placed after PPC Deck Beams have been set
- Cost of concrete removal is included in Removal of Existing Superstructures.

DESIGNED	DDB
CHECKED	LLV
DRAWN	JSD
CHECKED	DDB



ABUTMENTS AND PIER DETAILS
F.A.P. 311 (US RTE. 34)
OVER W BRANCH OF DU PAGE RIVER
SECTION 652X-B-R-1,
DU PAGE COUNTY, STA. 1701+11
STRUCTURE NO. 022-0040

STS CONSULTANTS
111 NE Jefferson Ave.
Peoria, Illinois 61602
Ph(309)676-8464
FAX(309)676-5445
IL Design Firm Reg. No. 184-001518