

F.A.P. RTE.	SECTION	COUNTY	TOTAL SHEETS	SHEET NO.
305	2007-028 RS	COOK	35	1

STATE OF ILLINOIS  
DEPARTMENT OF TRANSPORTATION  
DIVISION OF HIGHWAYS

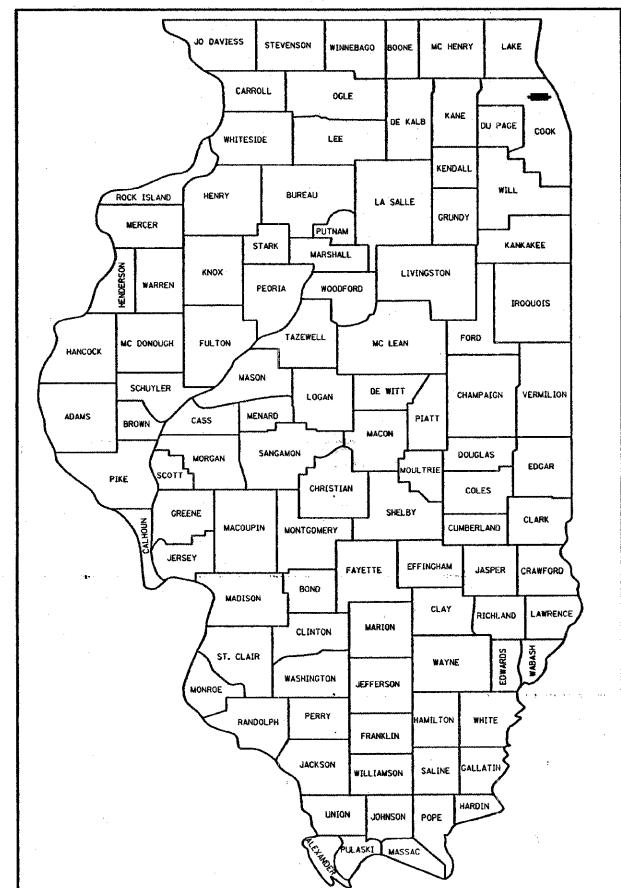
**PROPOSED  
HIGHWAY PLANS**

F.A.P. ROUTE 305: WILLOW RD.  
WEST OF SUNSET RIDGE RD. TO I-94  
SECTION: 2007-028 RS  
RESURFACING (MAINTENANCE), BRIDGE REPAIRS  
& TRAFFIC SIGNAL MODERNIZATION  
COOK COUNTY  
C-91-292-07

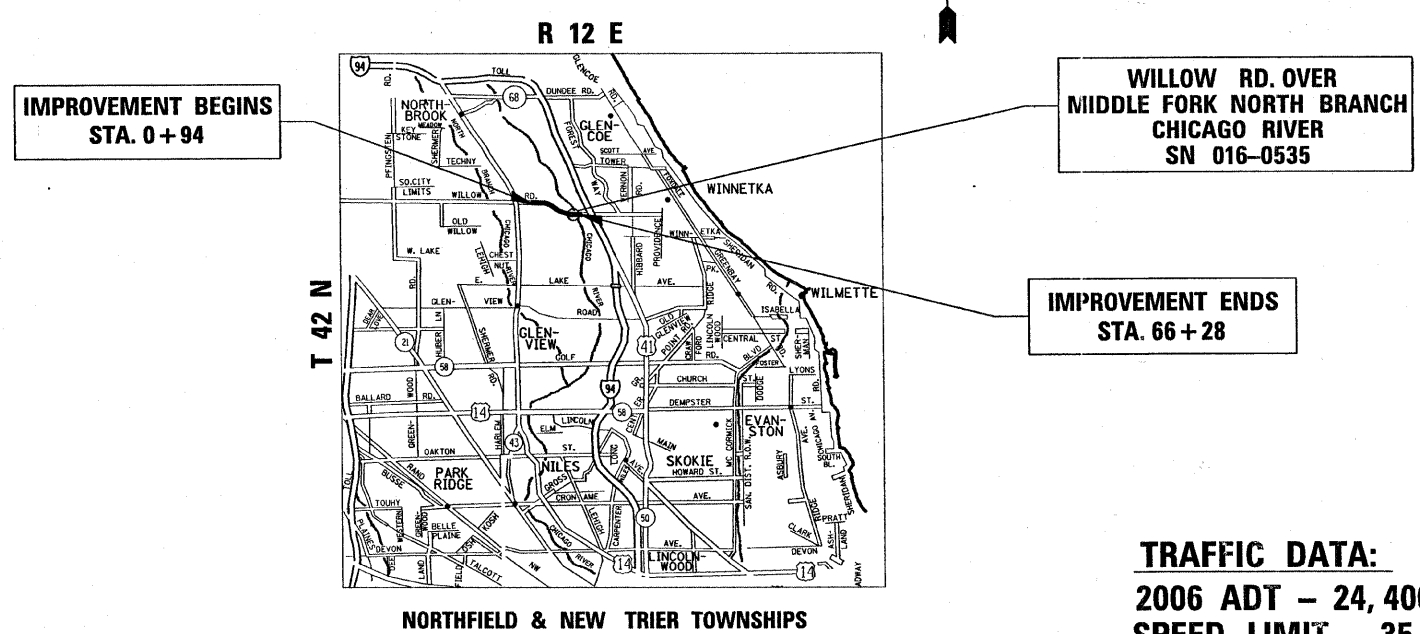
FOR INDEX OF SHEETS, SEE SHEET NO. 2

IMPROVEMENT LOCATED IN THE VILLAGE  
OF NORTHFIELD

D-91-292-07



LOCATION OF SECTION INDICATED THUS: - [Symbol] -



**TRAFFIC DATA:**  
2006 ADT - 24,400  
SPEED LIMIT - 35 MPH

STATE OF ILLINOIS  
DEPARTMENT OF TRANSPORTATION  
DIVISION OF HIGHWAYS

SUBMITTED FEBRUARY 7, 2008

*Diana M. O'Keefe*  
DEPUTY DIRECTOR OF HIGHWAYS, REGION ENGINEER

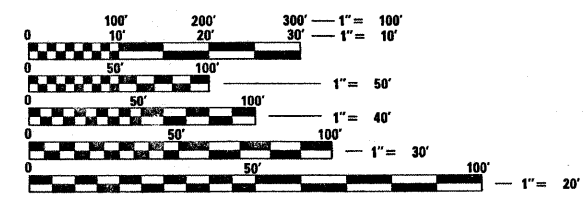
March 21, 2008  
*Eric E. Harauko*  
INTERIM ENGINEER OF DESIGN AND ENVIRONMENT

March 21, 2008  
*Christine M. Koednick*  
DIRECTOR OF HIGHWAYS, CHIEF ENGINEER

GROSS & NET LENGTH OF IMPROVEMENT = 6,534 FEET = 1.24 MILES

PRINTED BY THE AUTHORITY  
OF THE STATE OF ILLINOIS

DISTRICT ONE - DESIGN - PLAN PREPARATION ENGINEER  
KEN ENG / BOB BORO (847)705-4178



FULL SIZE PLANS HAVE BEEN PREPARED USING STANDARD ENGINEERING SCALES. REDUCED SIZED PLANS WILL NOT CONFORM TO STANDARD SCALES. IN MAKING MEASUREMENTS ON REDUCED PLANS, THE ABOVE SCALES MAY BE USED.

J.U.L.I.E.  
JOINT UTILITY LOCATION INFORMATION FOR EXCAVATION  
1-800-892-0123 OR 811

CONTRACT NO. 60D04