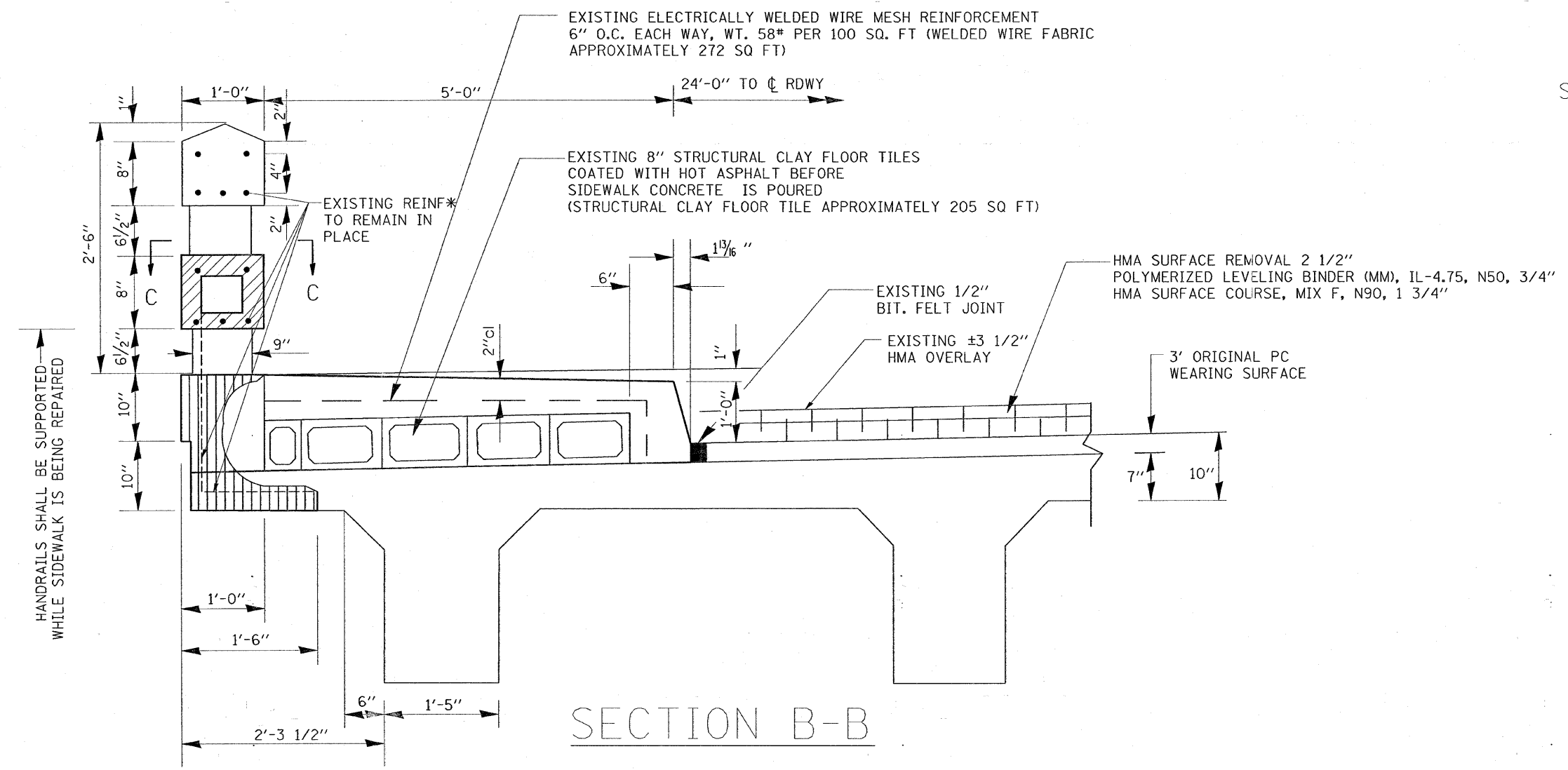


F.A.P. RTE.	SECTION	COUNTY	TOTAL SHEETS	SHEET NO.
305	2007-028 RS	COOK	35	13
STA.		TO STA.		
FED. ROAD DIST. NO. 1		ILLINOIS	FED. AID PROJECT	

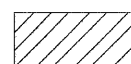

SHEET --4--OF--4--



HANDRAILS SHALL BE SUPPORTED WHILE SIDEWALK IS BEING REPAIRED

SECTION B-B

* EXISTING REINFORCEMENT BARS EXTENDING INTO THE REMOVAL AREA SHALL BE CLEANED, STRAIGHTENED AND INCORPORATED INTO THE NEW CONSTRUCTION. ANY REINFORCEMENT BARS THAT ARE DAMAGED DURING CONCRETE REMOVAL SHALL BE REPLACED WITH AN APPROVED BAR SPLICER OR ANCHORAGE SYSTEM. COST INCLUDED WITH CONCRETE REMOVAL.

-  HATCHED AREAS INDICATE " STRUCTURAL REPAIR TO CONCRETE DEPTH EQUAL TO OR LESS THAN 5 INCHES"
-  INDICATE " STRUCTURAL REPAIR TO CONCRETE DEPTH GREATER THAN 5 INCHES"

PLOT DATE = 2/7/2008
 FILE NAME = c:\p\projects\121227\sh_rdw.dgn
 PLOT SCALE = 50.0000 / IN.
 USER NAME = gaultaunefp

REVISIONS		ILLINOIS DEPARTMENT OF TRANSPORTATION	
NAME	DATE		

REPAIR DETAILS
SN 016-0535

SCALE: VERT.	DRAWN BY
DATE: HORIZ.	CHECKED BY