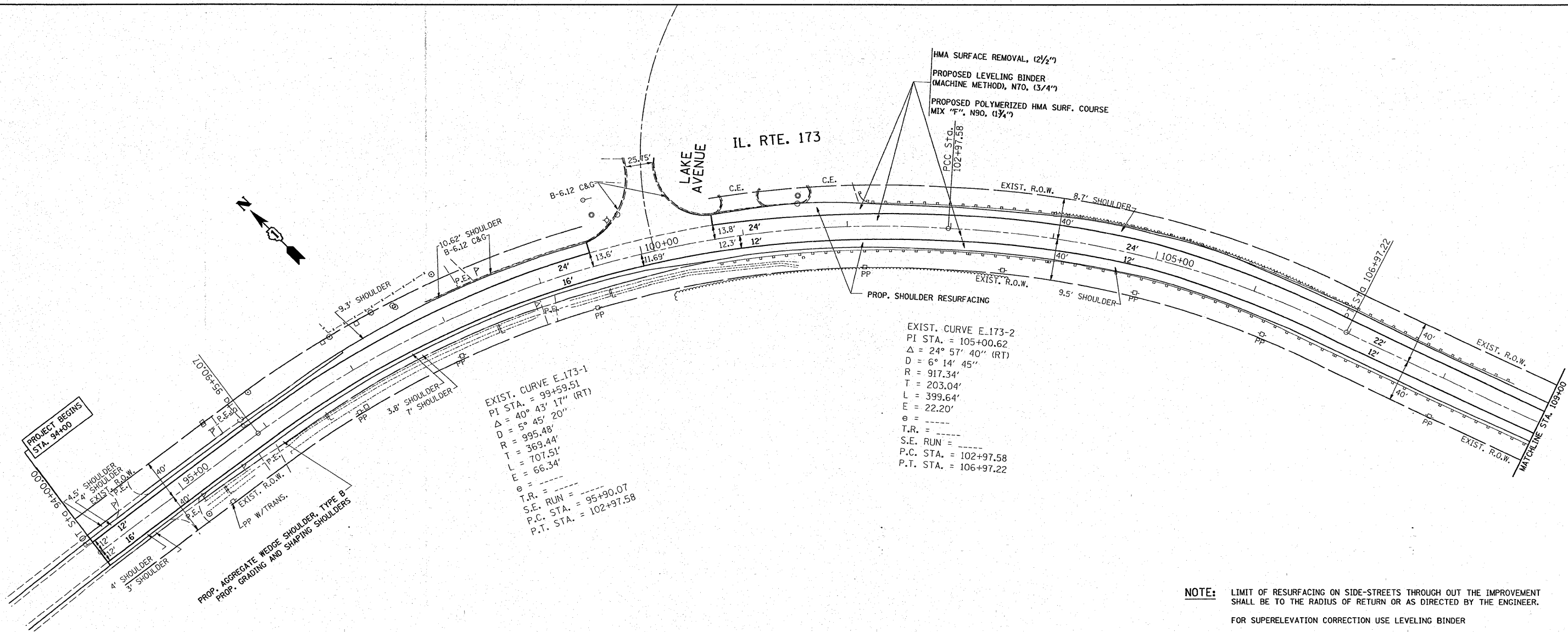
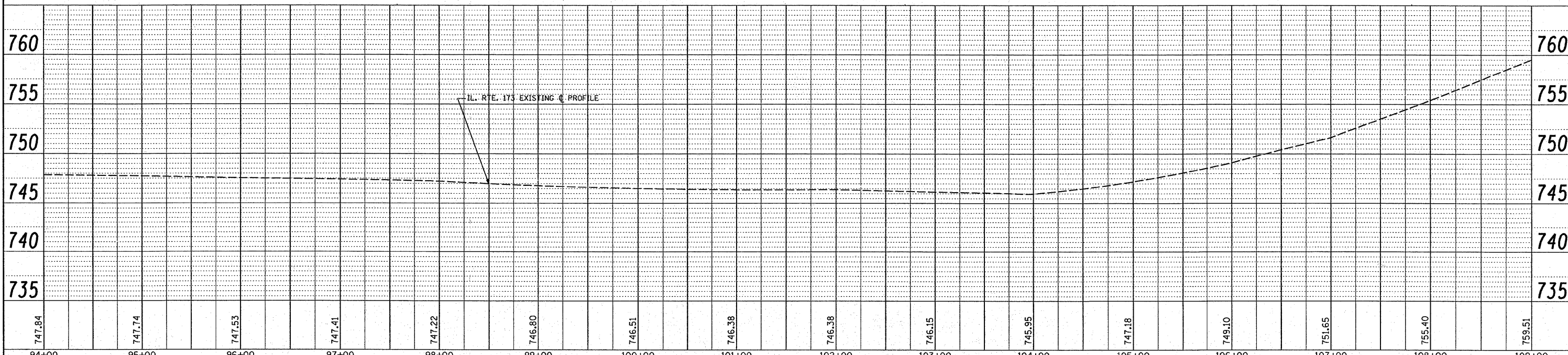


PLAN	SURVEYED	BY	DATE
	PLOTTED		
	NOTED		
	REVISIONS		
	CADD FILE NAME		

PROFILE	SURVEYED	BY	DATE
	PLOTTED		
	NOTED		
	REVISIONS		
	CADD FILE NAME		



NOTE: LIMIT OF RESURFACING ON SIDE-STREETS THROUGH OUT THE IMPROVEMENT SHALL BE TO THE RADIUS OF RETURN OR AS DIRECTED BY THE ENGINEER. FOR SUPERELEVATION CORRECTION USE LEVELING BINDER



FILE NAME =	USER NAME = drivakosgn	DESIGNED -	REVISED -	STATE OF ILLINOIS DEPARTMENT OF TRANSPORTATION	IL. RTE. 173 (FAP 303) (LAKE AVENUE TO ORCHARD STREET) PLAN AND PROFILE	F.A.P. RTE.	SECTION	COUNTY	TOTAL SHEETS	SHEET NO.
ca:\projects\dl01108\sh_rday.dgn	PLOT SCALE = 50.0000' / IN.	DRAWN -	REVISED -			303	049-1	LAKE	49	9
PLOT DATE = 1/31/2008	DATE -	CHECKED -	REVISED -			2007				
		DATE -	REVISED -			SCALE: 50H/5V:1"		SHEET NO. OF SHEETS		STA. 94+00 TO STA. 109+00