

**SUMMARY OF QUANTITIES**

ITEM	DESCRIPTION	UNIT	QUANTITY
81018500	CONDUIT PUSHED 2" DIA., GALVANIZED STEEL	FOOT	100
87301225	ELECTRIC CABLE IN CONDUIT, SIGNAL NO. 143C	FOOT	14.5
X8050015	SERVICE INSTALLATION, POLE MOUNT	EACH	1
X0324713	POST MOUNTED FLASHING BEACON	EACH	1

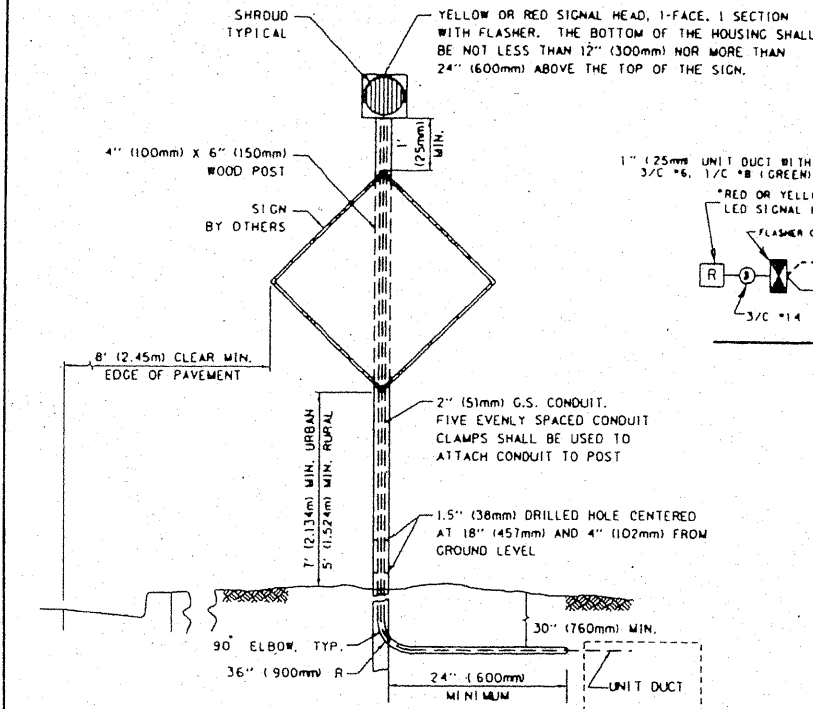
**FLASHER SIGNAL LEGEND**

	PROPOSED	EXISTING
SERVICE INSTALLATION		
12" SIGNAL HEAD (LED)		
WOOD POST, 4" x 6"		
CONDUIT IN GROUND OR UNIT DUCT IN TRENCH		
HANDHOLE		
HEAVY-DUTY HANDHOLE		
ELECTRICAL POLE		
GROUND ROD		
SIGNAL FACE WITH BACKPLATE		
JUNCTION BOX - STAINLESS STEEL		

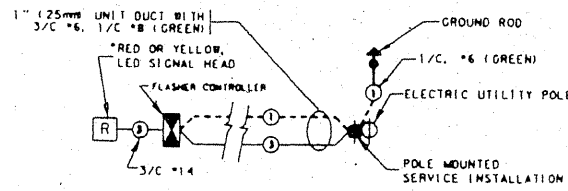
F.A. RTE.	SECTION	COUNTY	TOTAL SHEETS	SHEET NO.
		LAKE	49	18
STA.	TO STA.			
FED. ROAD DIST. NO.	ILLINOIS FED. AID PROJECT			

**NOTE FOR SERVICE INSTALLATION(S):**

- A. ELECTRIC SERVICE PANELS SHALL BE CONSTRUCTED TO U.L. STD 508, INDUSTRIAL CONTROL PANEL, AND CARRY THE U.L. LABEL.
- B. ALL WIRING SHALL BE NEATLY DRESSED AND SUPPORTED.

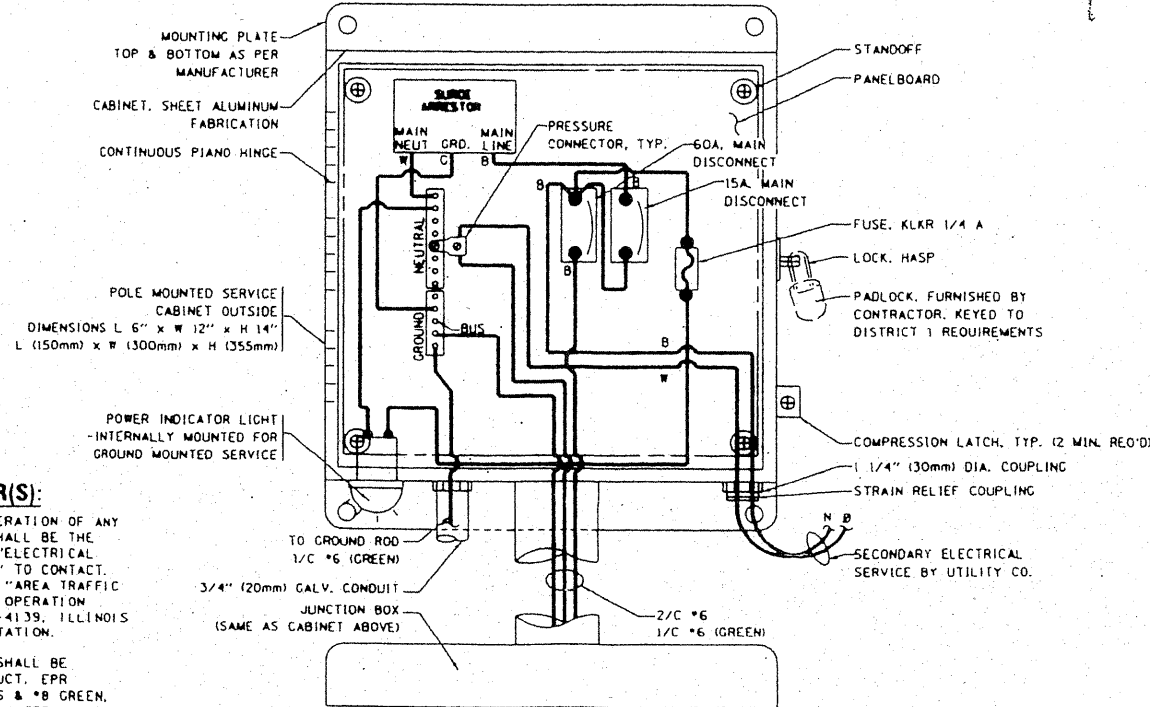
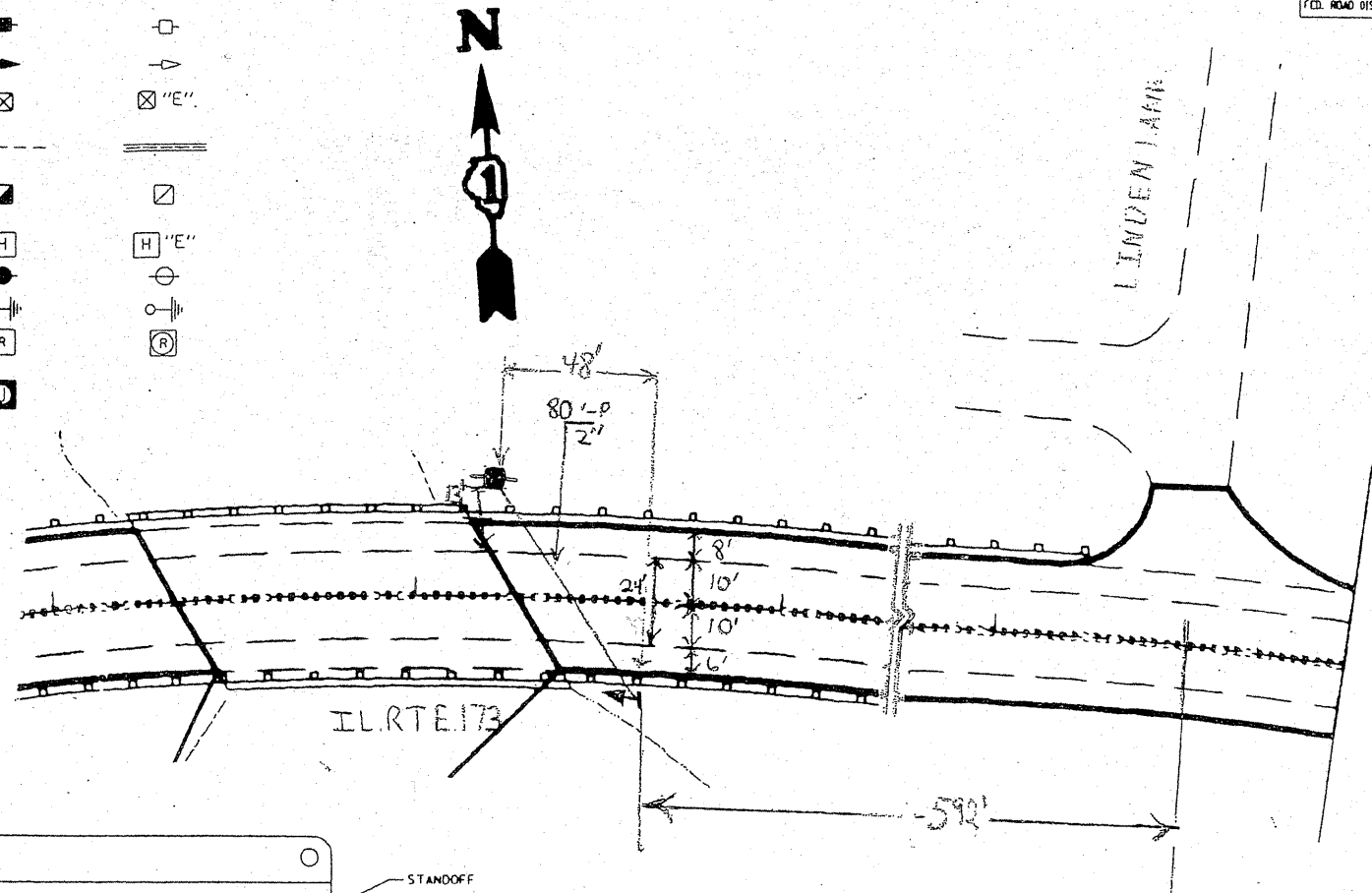


**RED /YELLOW POLE MOUNTED FLASHER DETAIL**



**TYPICAL CABLE PLAN**

- YELLOW FLASHER - MOUNTED IN ADVANCE OF INTERSECTION
- RED FLASHER - MOUNTED AT INTERSECTION



**POLE MOUNTED SERVICE WIRING DIAGRAM**

**NOTE FOR FLASHER(S):**

- PRIOR TO INITIATING OPERATION OF ANY FLASHER LOCATION, IT SHALL BE THE RESPONSIBILITY OF THE "ELECTRICAL MAINTENANCE CONTRACTOR" TO CONTACT, 48 HRS IN ADVANCE, THE "AREA TRAFFIC SIGNAL MAINTENANCE AND OPERATION ENGINEER" AT (847) 705-4139, ILLINOIS DEPARTMENT OF TRANSPORTATION.
- EACH FLASHER CIRCUIT SHALL BE INSTALLED USING UNIT DUCT, EPR INSULATED CABLES 3/4" x 6" x 8" GREEN, 1 INCH. THE CABLES SHALL TERMINATE AT SEPARATE BUS TERMINALS IN THE JUNCTION BOX SHOWN. THE SPARE 1/2" x 6" 1-EACH CIRCUIT, SHALL BE SPLICED TOGETHER AND TAPED.

**NOTE FOR SERVICE INSTALLATION(S):**

- A. ELECTRIC SERVICE PANELS SHALL BE CONSTRUCTED TO U.L. STD 508, INDUSTRIAL CONTROL PANEL, AND CARRY THE U.L. LABEL.
- B. ALL WIRING SHALL BE NEATLY DRESSED AND SUPPORTED.

I.D.O.T. TRAFFIC SIGNAL INSTALLATION ELECTRICAL SERVICE REQUIREMENTS				TOTAL WATTAGE
TYPE	NO. LAMPS	WATTAGE	% OPERATION	
FLASHER (LED) YELLOW	1	25	0.50	12.5
ENERGY COSTS TO:			TOTAL=	12.5

**Illinois Department of Transportation**  
 Division of Highways / District 1  
 201 West Center Court  
 Schaumburg, Illinois 60196-1096

ENERGY SUPPLY CONTACT: BRAIN HAVICK  
 PHONE: 847-RIL-5324  
 COMPANY: COMM. ED.

REVISIONS	
NAME	DATE

ILLINOIS DEPARTMENT OF TRANSPORTATION  
 FLASHER INSTALLATION  
 ILL. RTE. 173 @ LINDEN LANE

SCALE: VERT. NONE  
 HORIZ. NONE  
 DATE: SEPT 2007

DRAWN BY:  
 DESIGNED BY:  
 CHECKED BY: