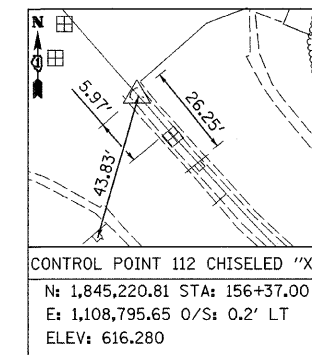
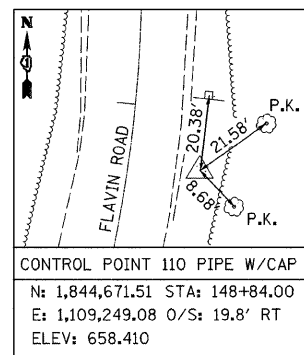
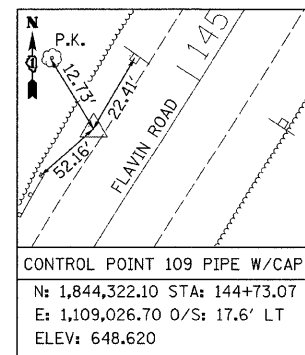
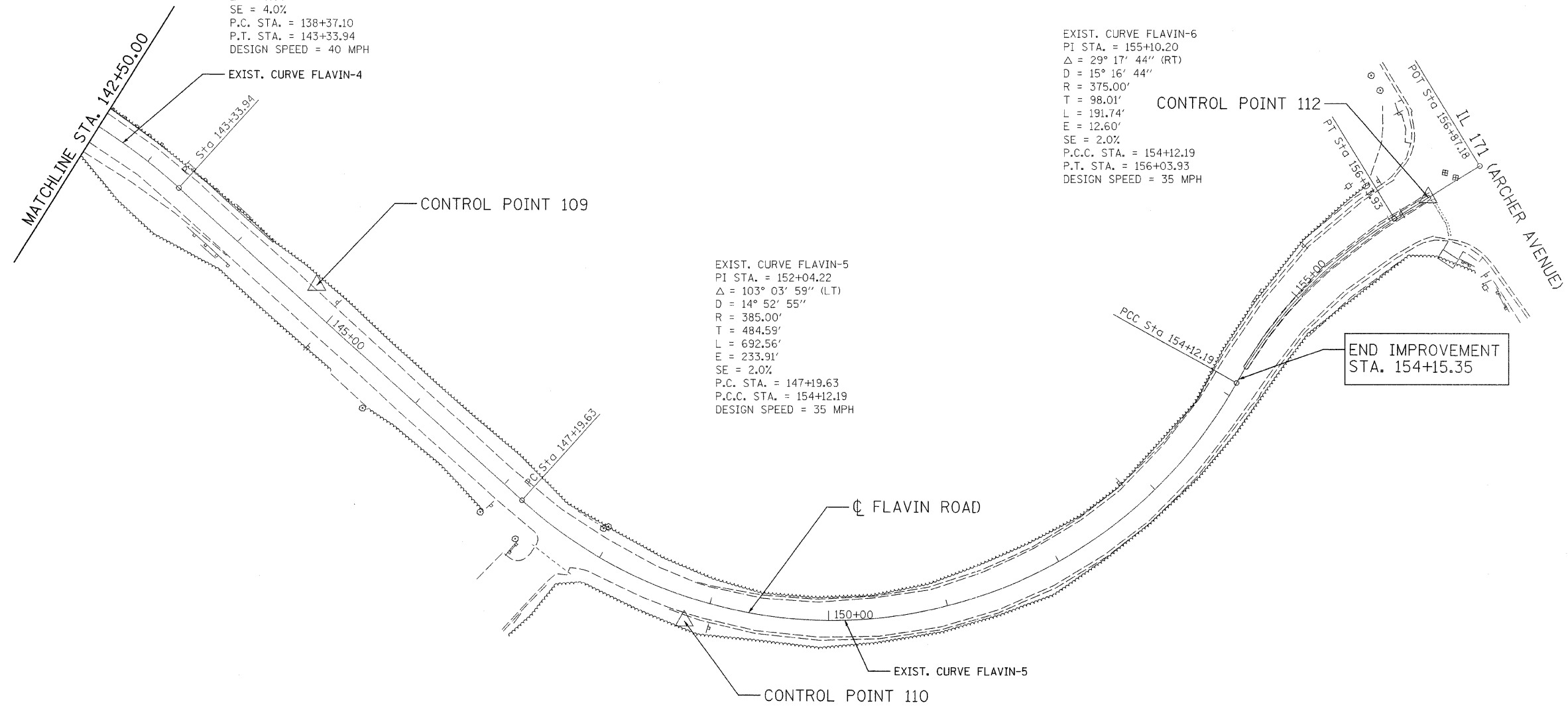




EXIST. CURVE FLAVIN-4  
 PI STA. = 141+09.25  
 $\Delta$  = 58° 05' 45" (RT)  
 D = 11° 41' 35"  
 R = 490.00'  
 T = 272.15'  
 L = 496.84'  
 E = 70.50'  
 SE = 4.0%  
 P.C. STA. = 138+37.10  
 P.T. STA. = 143+33.94  
 DESIGN SPEED = 40 MPH

EXIST. CURVE FLAVIN-6  
 PI STA. = 155+10.20  
 $\Delta$  = 29° 17' 44" (RT)  
 D = 15° 16' 44"  
 R = 375.00'  
 T = 98.01'  
 L = 191.74'  
 E = 12.60'  
 SE = 2.0%  
 P.C.C. STA. = 154+12.19  
 P.T. STA. = 156+03.93  
 DESIGN SPEED = 35 MPH

EXIST. CURVE FLAVIN-5  
 PI STA. = 152+04.22  
 $\Delta$  = 103° 03' 59" (LT)  
 D = 14° 52' 55"  
 R = 385.00'  
 T = 484.59'  
 L = 692.56'  
 E = 233.91'  
 SE = 2.0%  
 P.C. STA. = 147+19.63  
 P.C.C. STA. = 154+12.19  
 DESIGN SPEED = 35 MPH



FILE NAME = m:\proj\3329\3329\_20\design\ProposedPlan\3329\_20\_ALIGN3.dwg

**Ciorba Group, Inc.**  
 CONSULTING ENGINEERS  
 5507 North Cumberland Avenue, Suite 402  
 Chicago, Illinois 60656  
 Tel. 773.775.4009 Fax 773.775.4014

USER NAME = wlanccaster	DESIGNED - WBL	REVISED -
PLOT SCALE = 50,0000' / IN.	DRAWN - WBL	REVISED -
PLOT DATE = 2/15/2008	CHECKED - MJL	REVISED -
	DATE - 1/18/2008	REVISED -

**STATE OF ILLINOIS  
 DEPARTMENT OF TRANSPORTATION**

**FAU 2697 (FLAVIN ROAD)  
 IL 171 (ARCHER AVE.) TO 95TH ST.  
 ALIGNMENT AND CONTROL POINTS**

SCALE: SHEET NO. OF SHEETS STA. TO STA.

F.A.P. RTE.	SECTION	COUNTY	TOTAL SHEETS	SHEET NO.
2697	2007-051 Q	COOK	29	8
FED. ROAD DIST. NO.			ILLINOIS FED. AID PROJECT	
			CONTRACT NO. 60D43	