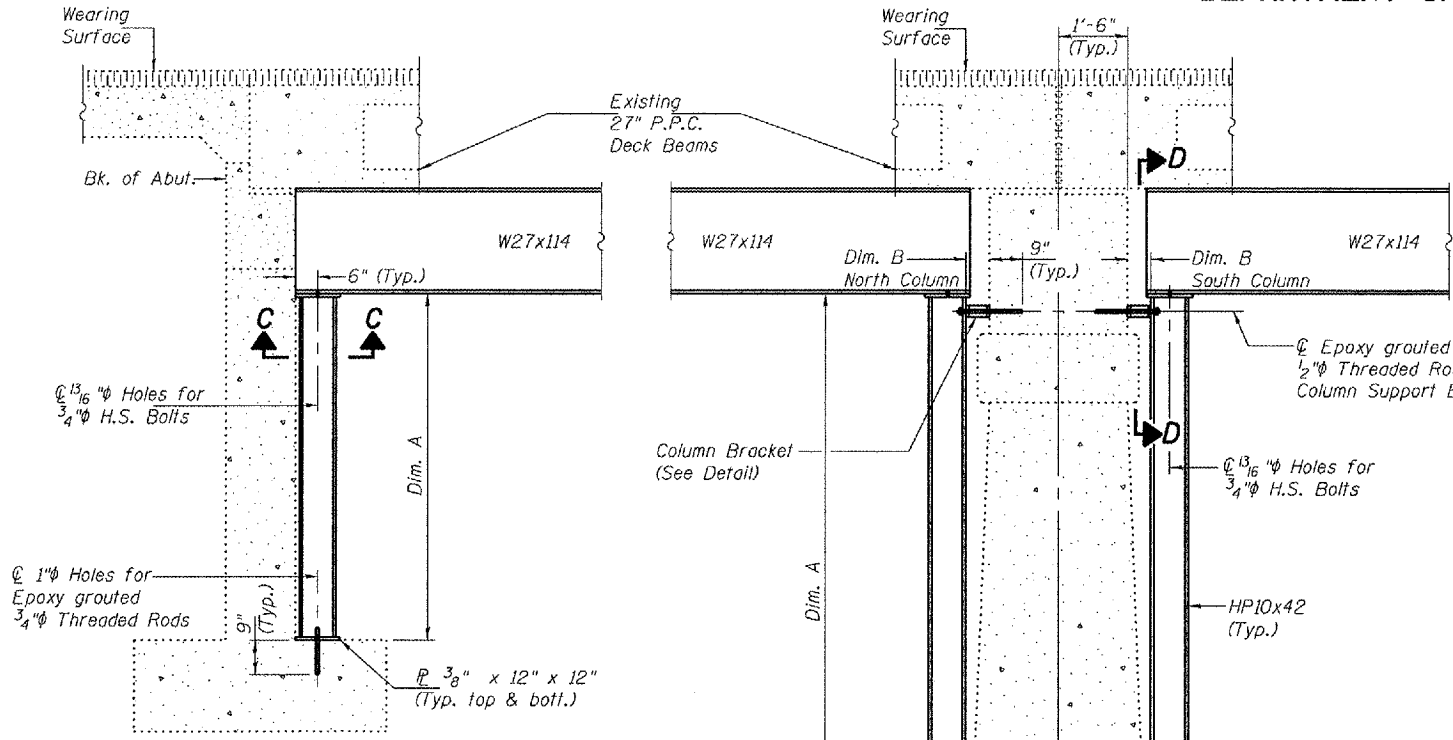


STATE OF ILLINOIS  
DEPARTMENT OF TRANSPORTATION

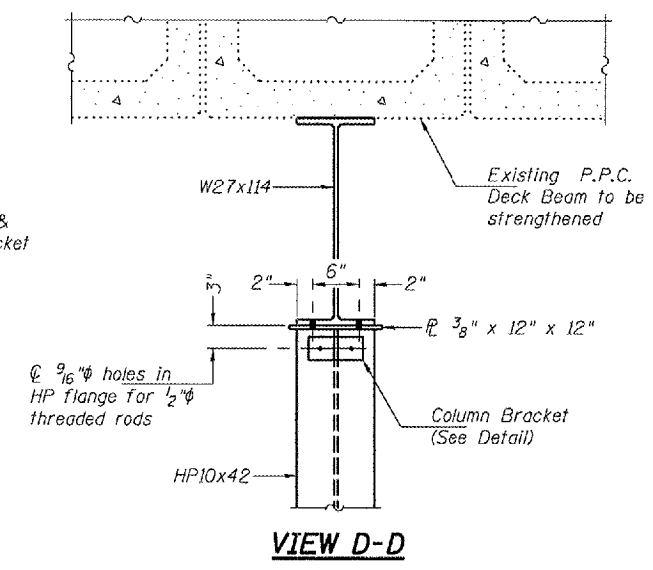
PROJECT NO.	SECTION	COUNTY	SHEET NO.	TOTAL SHEETS
		Cook	5	5
FED. ROAD DIST. NO. 7 ILLINOIS FED. AID PROJECT				

Contract Number: 60D44

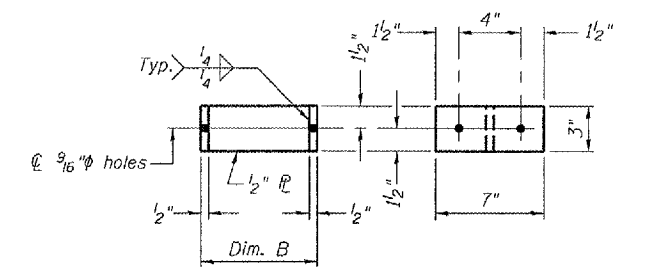
SHEET NO. 2  
2 SHEETS



SECTION AT NORTH ABUTMENT



VIEW D-D

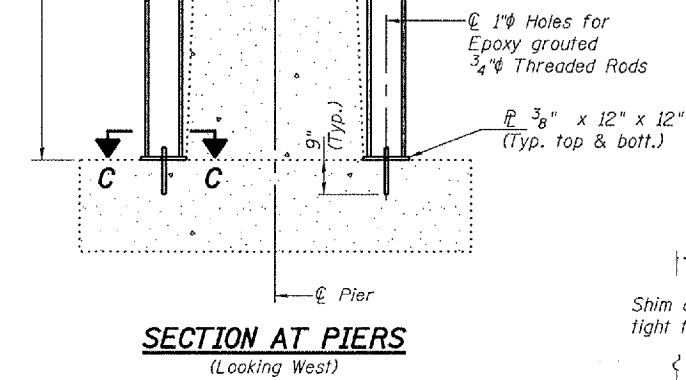


COLUMN BRACKET DETAIL  
(No. Req'd = 29)

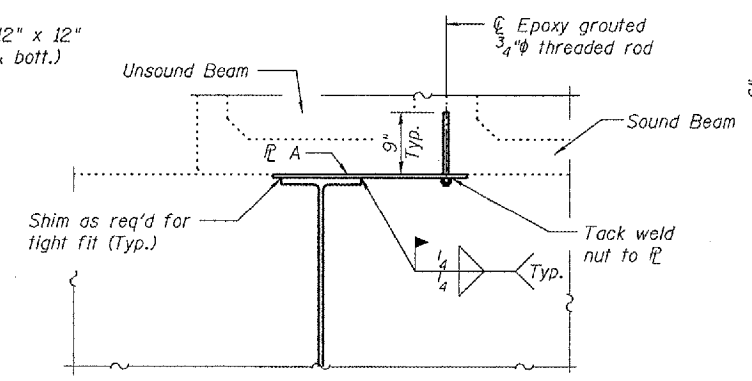
\*TABLE OF DIMENSIONS

Span	Beam	Dimension A		Dimension B	
		So. Column	No. Column	So. Column	No. Column
3	7	16'-6 <sup>13</sup> / <sub>16</sub> "	23'-9 <sup>7</sup> / <sub>8</sub> "	7 <sup>7</sup> / <sub>8</sub> "	11 <sup>5</sup> / <sub>8</sub> "
	16	16'-3 <sup>9</sup> / <sub>16</sub> "	23'-6 <sup>5</sup> / <sub>8</sub> "	7 <sup>7</sup> / <sub>8</sub> "	11 <sup>5</sup> / <sub>8</sub> "
4	6	24'-0 <sup>13</sup> / <sub>16</sub> "	26'-0 <sup>5</sup> / <sub>8</sub> "	11 <sup>5</sup> / <sub>8</sub> "	12 <sup>3</sup> / <sub>4</sub> "
	1	26'-1 <sup>1</sup> / <sub>8</sub> "	24'-0 <sup>5</sup> / <sub>16</sub> "	12 <sup>3</sup> / <sub>4</sub> "	11 <sup>7</sup> / <sub>8</sub> "
5	8	26'-4 <sup>1</sup> / <sub>4</sub> "	24'-4 <sup>1</sup> / <sub>2</sub> "	12 <sup>3</sup> / <sub>4</sub> "	11 <sup>7</sup> / <sub>8</sub> "
	15	26'-1 <sup>5</sup> / <sub>16</sub> "	24'-1 <sup>3</sup> / <sub>16</sub> "	12 <sup>3</sup> / <sub>4</sub> "	11 <sup>7</sup> / <sub>8</sub> "
7	5	27'-0 <sup>1</sup> / <sub>16</sub> "	29'-0 <sup>1</sup> / <sub>8</sub> "	13 <sup>1</sup> / <sub>2</sub> "	14 <sup>1</sup> / <sub>4</sub> "
	16	26'-9 <sup>13</sup> / <sub>16</sub> "	28'-9 <sup>5</sup> / <sub>8</sub> "	13 <sup>1</sup> / <sub>2</sub> "	14 <sup>1</sup> / <sub>4</sub> "
17	2	27'-10 <sup>3</sup> / <sub>8</sub> "	26'-7 <sup>1</sup> / <sub>2</sub> "	13 <sup>3</sup> / <sub>4</sub> "	13"
18	17	26'-2 <sup>1</sup> / <sub>16</sub> "	24'-3 <sup>1</sup> / <sub>16</sub> "	13"	11 <sup>7</sup> / <sub>8</sub> "
19	8	24'-3 <sup>15</sup> / <sub>16</sub> "	22'-4 <sup>1</sup> / <sub>16</sub> "	11 <sup>7</sup> / <sub>8</sub> "	10 <sup>3</sup> / <sub>4</sub> "
20	17	21'-8 <sup>15</sup> / <sub>16</sub> "	19'-8 <sup>15</sup> / <sub>16</sub> "	10 <sup>3</sup> / <sub>4</sub> "	9 <sup>5</sup> / <sub>8</sub> "
21	10	19'-9 <sup>7</sup> / <sub>8</sub> "	17'-9 <sup>3</sup> / <sub>4</sub> "	9 <sup>5</sup> / <sub>8</sub> "	8 <sup>1</sup> / <sub>2</sub> "
23	6	15'-3 <sup>3</sup> / <sub>4</sub> "	13'-3 <sup>5</sup> / <sub>8</sub> "	7 <sup>3</sup> / <sub>8</sub> "	6 <sup>1</sup> / <sub>4</sub> "
25	16	10'-6 <sup>13</sup> / <sub>16</sub> "	7'-5 <sup>1</sup> / <sub>2</sub> "	5 <sup>1</sup> / <sub>8</sub> "	-

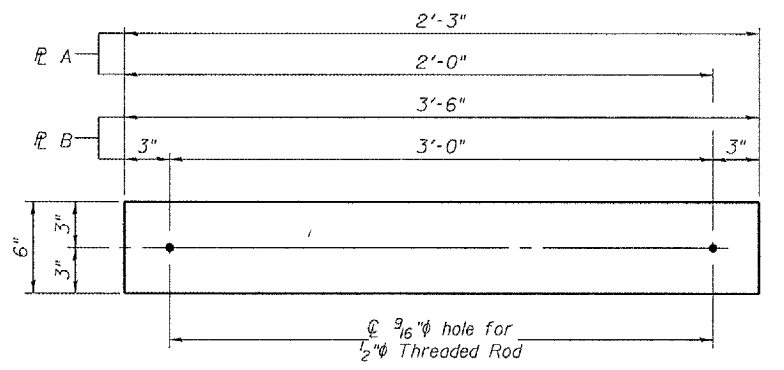
\* Dimensions are based on elevations taken from the existing plans. The Contractor should verify dimensions before fabricating columns.



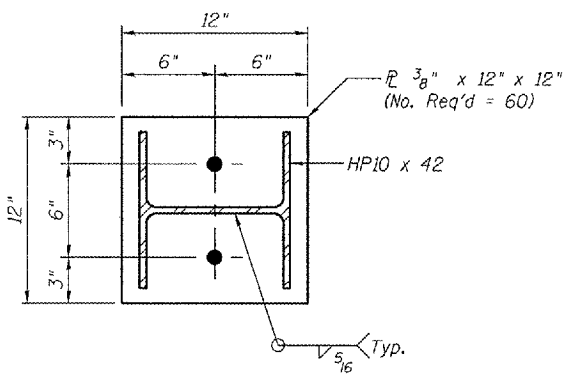
SECTION AT PIERS  
(Looking West)



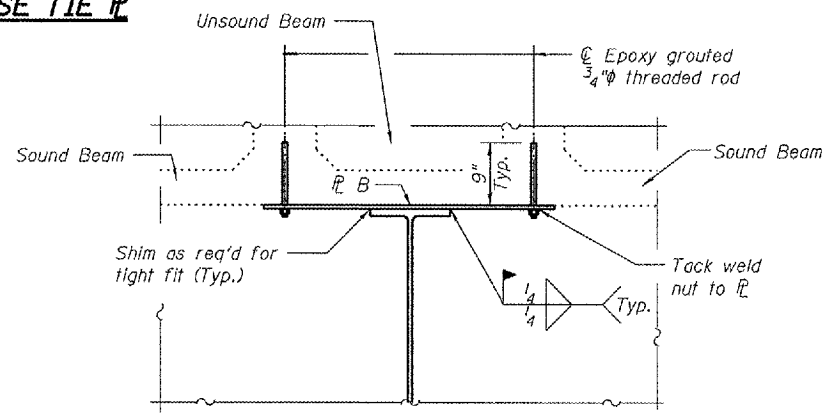
TYPICAL SECTION AT FASCIA BEAM TRANSVERSE TIE PL



TRANSVERSE TIE PL'S  
PL A 1/2" x 6" x 2'-3" 9 Req'd  
PL B 1/2" x 6" x 3'-6" 36 Req'd



SECTION C-C



TYPICAL SECTION AT INTERIOR BEAM TRANSVERSE TIE PL

DESIGNED	A.T.H.
CHECKED	V.H.V.
DRAWN	Drew Christopher
CHECKED	A.T.H. V.H.V.

March 5, 2008  
EXAMINED *Carl...*  
PASSED *Walsh E. Anderson*

SUPPORT DETAILS  
F.A.U. RT. 3578  
COOK COUNTY  
SN 016-0463