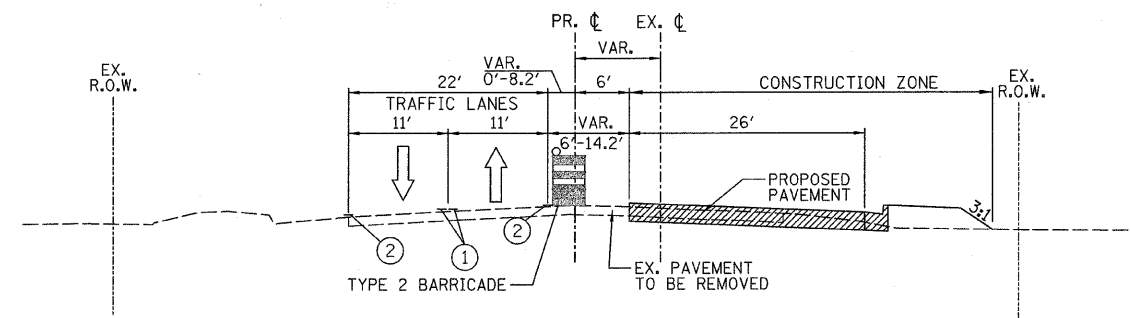
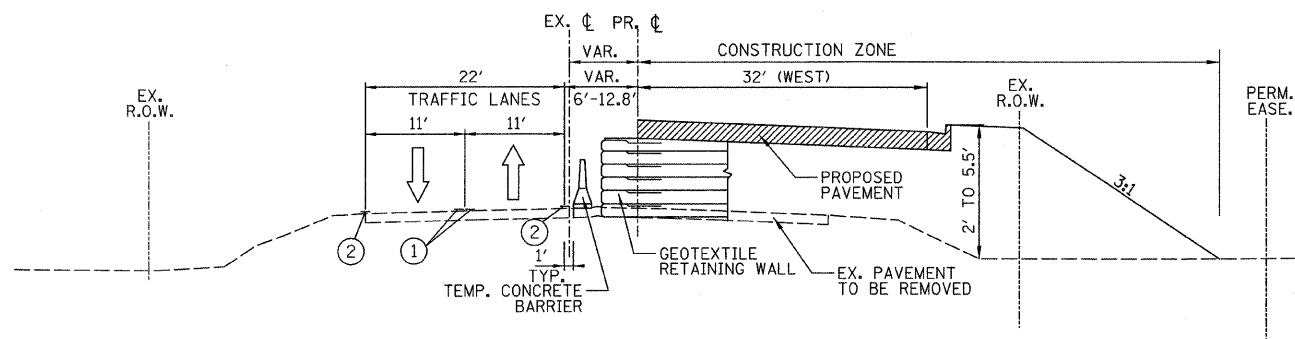


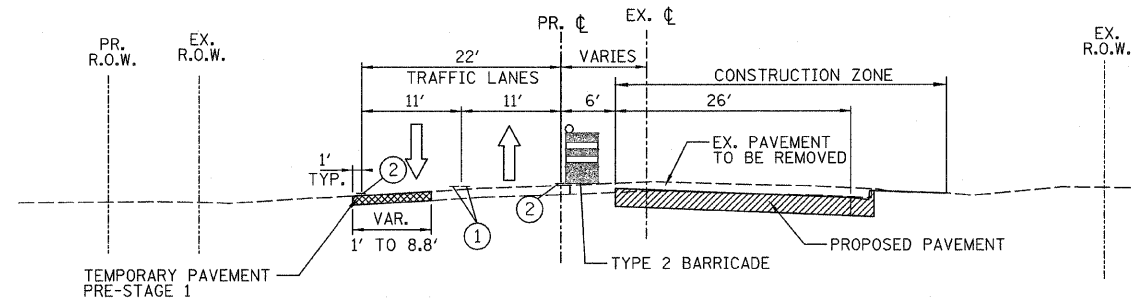
STAGE I  
STA. 106+68.00 TO STA. 113+43.00  
(LOOKING SOUTH)



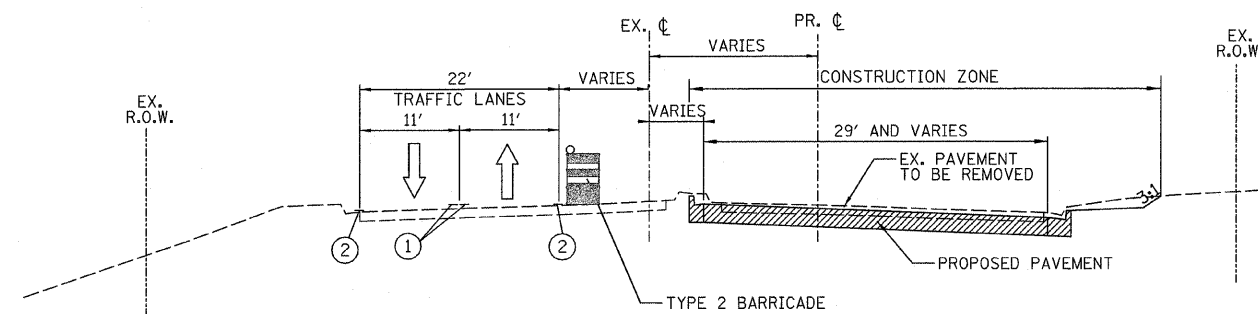
STAGE I  
STA. 134+00.00 TO STA. 138+76.20  
STA. 146+15.00 TO STA. 156+00.00  
STA. 168+50.00 TO STA. 179+00.00  
(LOOKING SOUTH)



STAGE I  
STA. 116+01.00 TO STA. 129+78.61  
STA. 131+34.81 TO STA. 134+00.00  
(LOOKING SOUTH)



STAGE I  
STA. 138+76.20 TO STA. 146+15.00  
STA. 156+00.00 TO STA. 168+50.00  
(LOOKING SOUTH)



US ROUTE 45 STAGE I  
STA. 300+00 TO STA. 305+00  
(LOOKING NORTHEAST)

LEGEND

- PROPOSED CONSTRUCTION DURING STAGE
- CONSTRUCTION FROM PREVIOUS STAGE
- PRE STAGE I TEMPORARY PAVEMENT

- TYPE II BARRICADE OR DRUMS WITH STEADY BURNING LIGHT
- ① TEMPORARY PAVEMENT MARKING LINE - 4" DOUBLE YELLOW @ 11" C-C
- ② TEMPORARY PAVEMENT MARKING LINE - 4" WHITE

NOTES:

1. TYPICAL SECTIONS REFLECT APPROXIMATE LIMITS FOR EXISTING TRAFFIC AND CONSTRUCTION ZONE RELATIONSHIPS ONLY. SEE SUGGESTED STAGE OF CONSTRUCTION AND TRAFFIC CONTROL PLANS AND NOTES FOR ADDITIONAL DETAILS.
2. GAPS IN STATIONING REFLECT TRANSITION AREAS OR LANE SHIFTS. SEE SUGGESTED STAGE OF CONSTRUCTION AND TRAFFIC CONTROL PLANS AND NOTES FOR ADDITIONAL DETAILS.
3. INSTALLATION OF GEOTEXTILE SHALL BE AS INDICATED IN MANUFACTURER MANUAL. GEOTEXTILE RETAINING WALL SHALL BE LEFT IN PLACE AND NEW PAVEMENT WILL BE CONSTRUCTED OVER IT.

**STV Incorporated**  
engineers/architects/scientists/construction managers  
200 W Monroe - Suite 1650  
Chicago, Illinois 60606

REVISIONS	
NAME	DATE

ILLINOIS DEPARTMENT OF TRANSPORTATION  
ILLINOIS ROUTE 21  
SUGGESTED STAGE OF CONSTRUCTION  
AND TRAFFIC CONTROL  
TYPICAL SECTION  
STAGE I

SCALE: VERT. N.T.S.  
HORIZ. DATE 02/05/08  
DRAWN BY RDT  
CHECKED BY GC