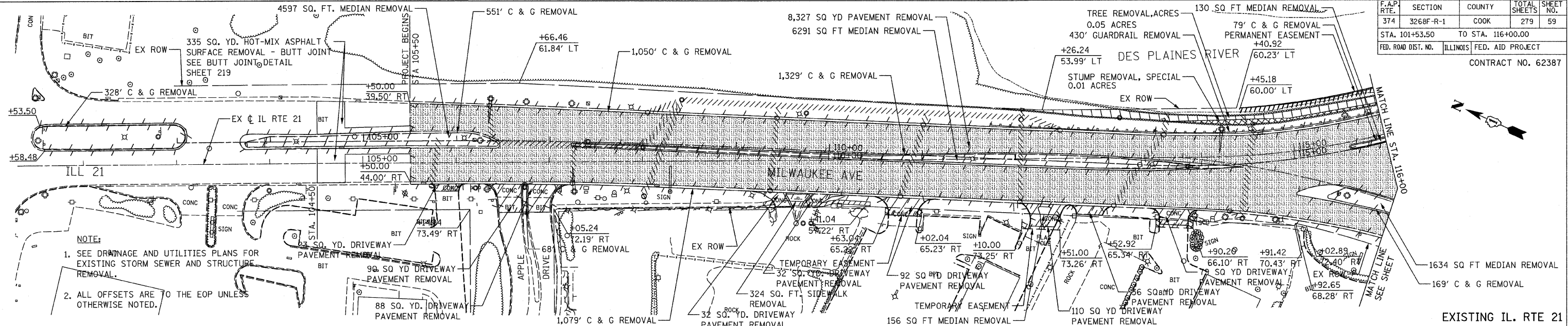
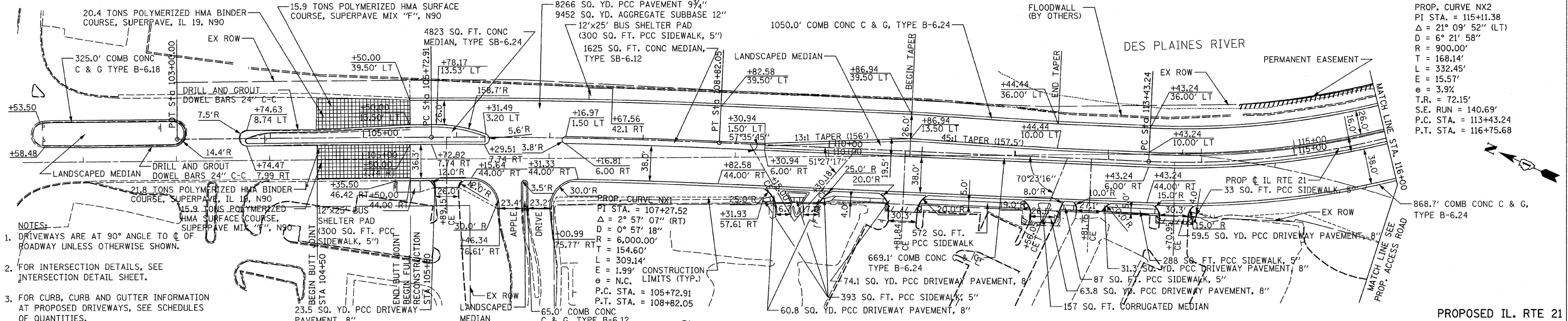


F.A.P. RTE.	SECTION	COUNTY	TOTAL SHEETS	SHEET NO.
374	3268F-R-1	COOK	279	59
STA. 101+53.50		TO STA. 116+00.00		
FED. ROAD DIST. NO.	ILLINOIS	FED. AID PROJECT		
CONTRACT NO. 62387				



DATE	BY

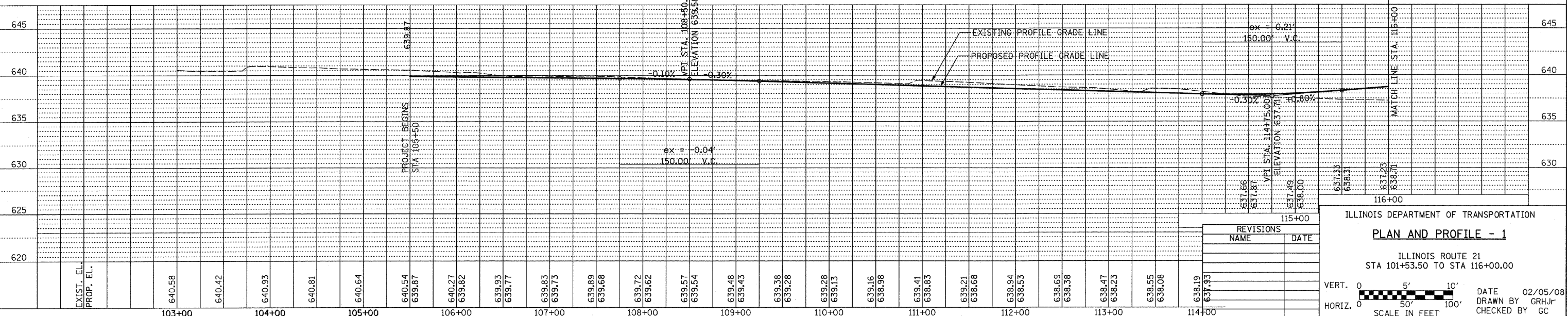
- NOTE:**
- SEE DRAINAGE AND UTILITIES PLANS FOR EXISTING STORM SEWER AND STRUCTURE REMOVAL.
  - ALL OFFSETS ARE TO THE EOP UNLESS OTHERWISE NOTED.



- NOTES:**
- DRIVEWAYS ARE AT 90° ANGLE TO  $\phi$  OF ROADWAY UNLESS OTHERWISE SHOWN.
  - FOR INTERSECTION DETAILS, SEE INTERSECTION DETAIL SHEET.
  - FOR CURB, CURB AND GUTTER INFORMATION AT PROPOSED DRIVEWAYS, SEE SCHEDULES OF QUANTITIES.

PROP. CURVE NX2  
 PI STA. = 115+11.38  
 $\Delta$  = 21° 09' 52" (LT)  
 D = 6° 21' 58"  
 R = 900.00'  
 T = 168.14'  
 L = 332.45'  
 E = 15.57'  
 $\epsilon$  = 3.9%  
 T.R. = 72.15'  
 S.E. RUN = 140.69'  
 P.C. STA. = 113+43.24  
 P.T. STA. = 116+75.68

DATE	BY



REVISIONS	
NAME	DATE

ILLINOIS DEPARTMENT OF TRANSPORTATION

**PLAN AND PROFILE - 1**

ILLINOIS ROUTE 21  
 STA 101+53.50 TO STA 116+00.00

VERT. 0 5' 10'

HORIZ. 0 50' 100'

SCALE IN FEET

DATE 02/05/08

DRAWN BY GRH/JC

CHECKED BY GC