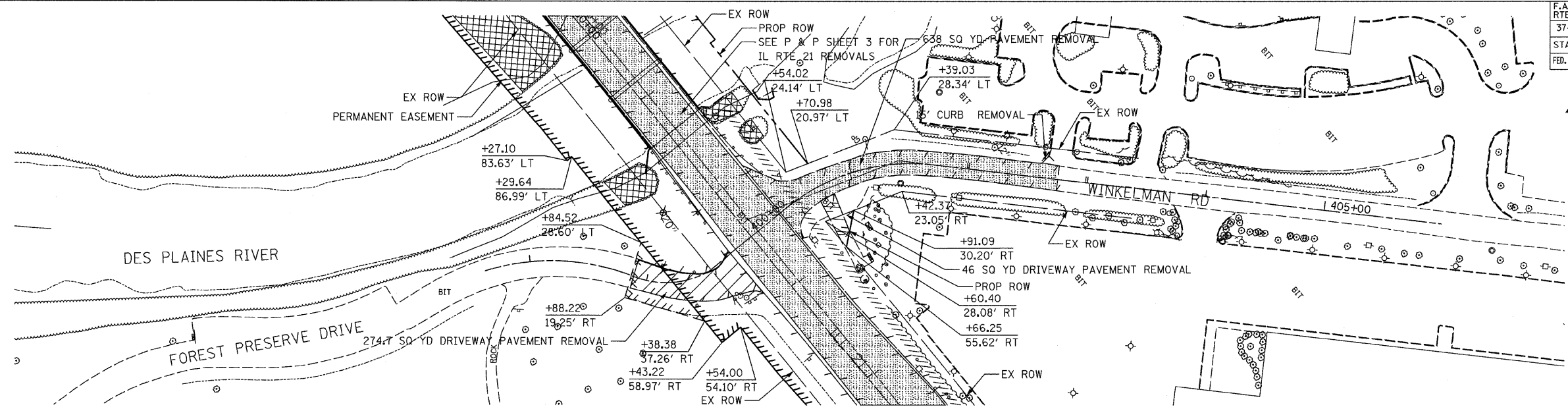


F.A.P. RTE.	SECTION	COUNTY	TOTAL SHEETS	SHEET NO.
374	3268F-R-1	COOK	279	66
STA. 397+61.59		TO STA. 402+75.00		
FED. ROAD DIST. NO.		ILLINOIS FED. AID PROJECT		

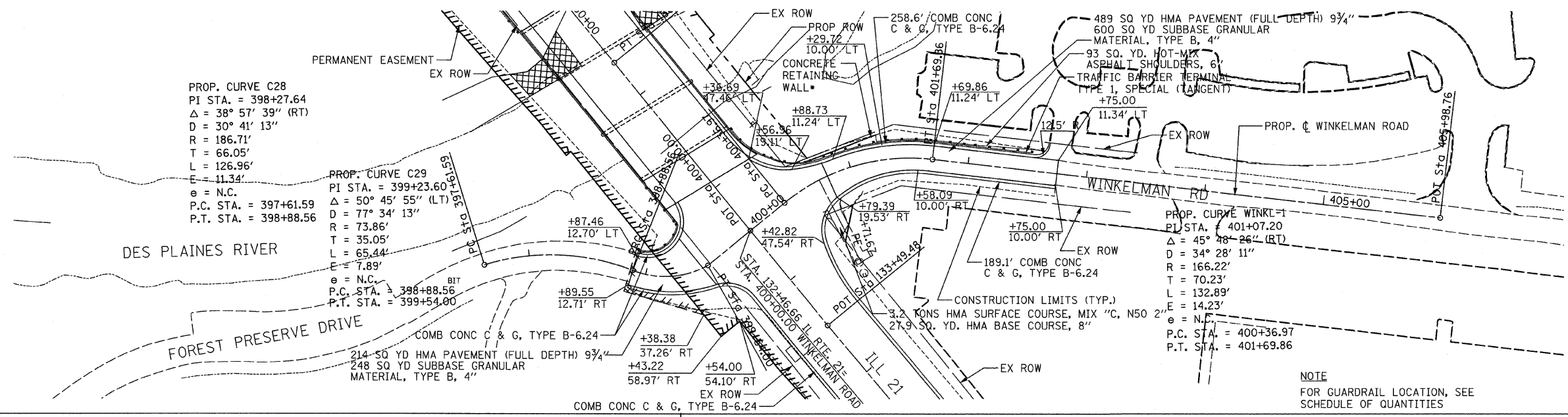
CONTRACT NO. 62387

PLAN	DATE	BY
SURVEYED		
GRADES CHECKED		
ELM. NOTED		
STRUCTURE NOTATIONS CHKD		
NO.		

PROFILE	DATE	BY
SURVEYED		
GRADES CHECKED		
ELM. NOTED		
STRUCTURE NOTATIONS CHKD		
NO.		



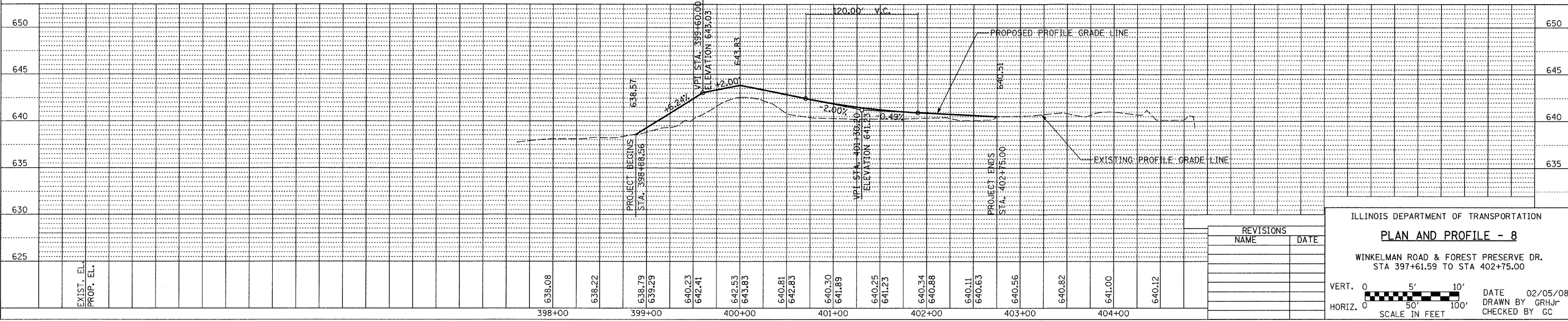
EXISTING WINKELMAN ROAD



PROPOSED WINKELMAN ROAD

NOTE
FOR GUARDRAIL LOCATION, SEE
SCHEDULE OF QUANTITIES

* FOR RETAINING WALL DETAILS,
SEE RETAINING WALL SHEET.



REVISIONS	
NAME	DATE

ILLINOIS DEPARTMENT OF TRANSPORTATION
PLAN AND PROFILE - 8
 WINKELMAN ROAD & FOREST PRESERVE DR.
 STA 397+61.59 TO STA 402+75.00

VERT. 0 5' 10'
 HORIZ. 0 50' 100'
 SCALE IN FEET

DATE 02/05/08
 DRAWN BY GRHJF
 CHECKED BY GC