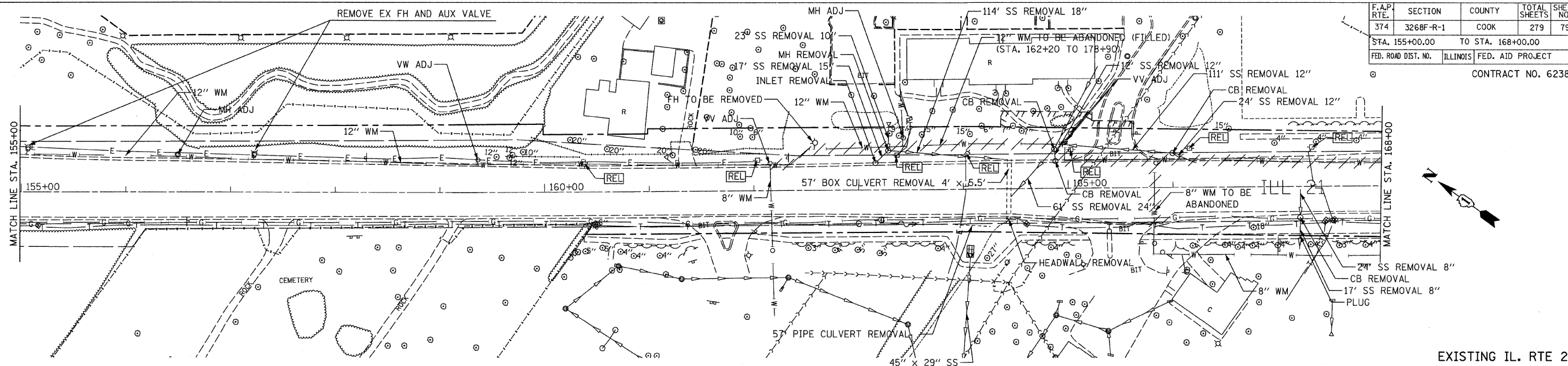
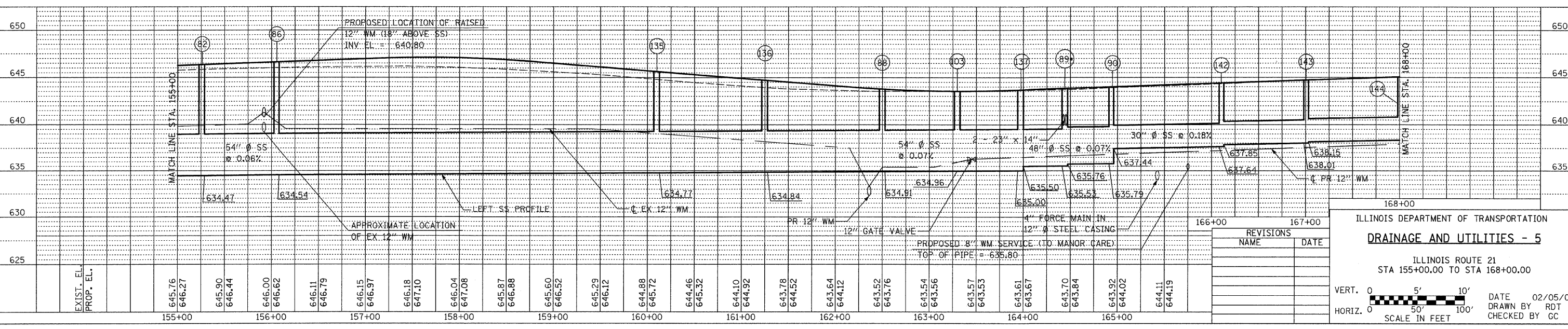
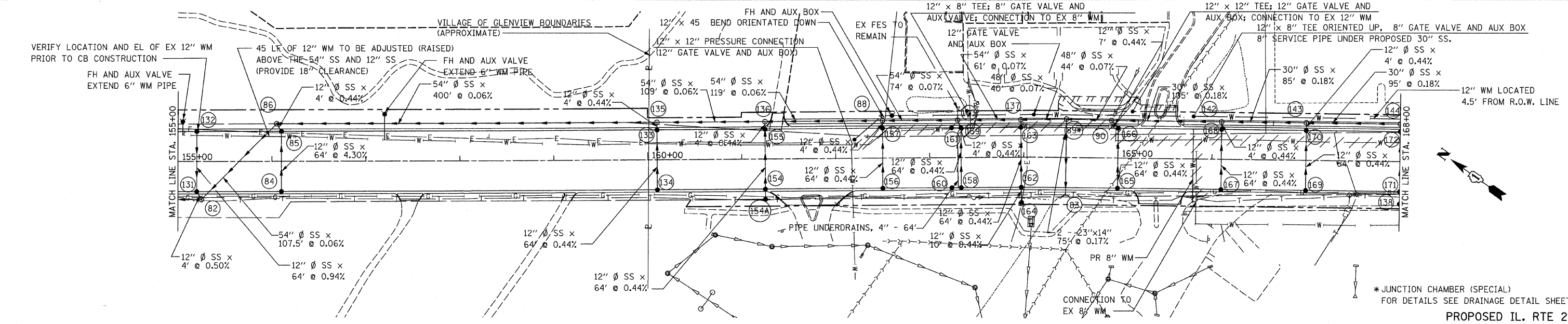


F.A.P. RTE.	SECTION	COUNTY	TOTAL SHEETS	SHEET NO.
374	3268F-R-1	COOK	279	79
STA. 155+00.00		TO STA. 168+00.00		
FED. ROAD DIST. NO.		ILLINOIS	FED. AID PROJECT	
CONTRACT NO. 62387				



DATE	BY

DATE	BY



* JUNCTION CHAMBER (SPECIAL)
FOR DETAILS SEE DRAINAGE DETAIL SHEET.
PROPOSED IL. RTE 21

ILLINOIS DEPARTMENT OF TRANSPORTATION
DRAINAGE AND UTILITIES - 5

ILLINOIS ROUTE 21
STA 155+00.00 TO STA 168+00.00

REVISIONS	
NAME	DATE

VERT. 0 5' 10'

HORIZ. 0 50' 100'

SCALE IN FEET

DATE 02/05/08
DRAWN BY RDT
CHECKED BY GC