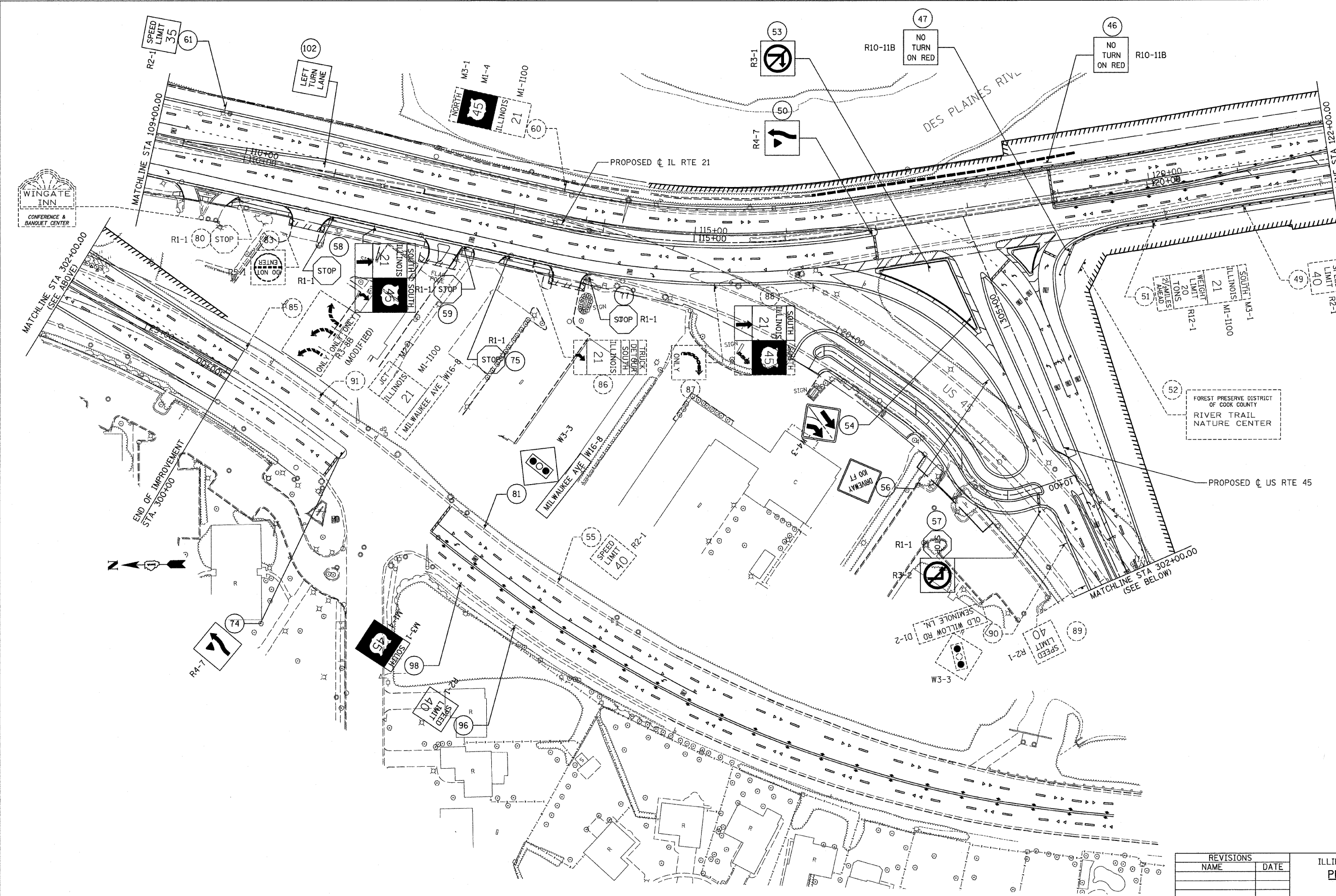


F.A.P. RTE.	SECTION	COUNTY	TOTAL SHEETS	SHEET NO.
374	3268F-R-1	COOK	279	124
STA. 109+00.00		TO STA. 122+00.00		
FED. ROAD DIST. NO.		ILLINOIS FED. AID PROJECT		
CONTRACT NO. 62387				



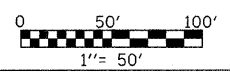
NOTE:
1. FOR MAST ARM MOUNTED SIGNS SEE TRAFFIC SIGNALS PLAN.

REVISIONS	
NAME	DATE

ILLINOIS DEPARTMENT OF TRANSPORTATION
PROPOSED SIGNING PLAN - 2

ILLINOIS ROUTE 21
STA 109+00.00 TO STA 122+00.00

DATE: 02/05/08
DRAWN BY: RDT
CHECKED BY: MK



STV Incorporated
engineers/architects/scientists/construction managers

200 W Monroe - Suite 1650
Chicago, Illinois 60606

1/11/08 11:58 AM 3/27/2008 4:15:01 PM