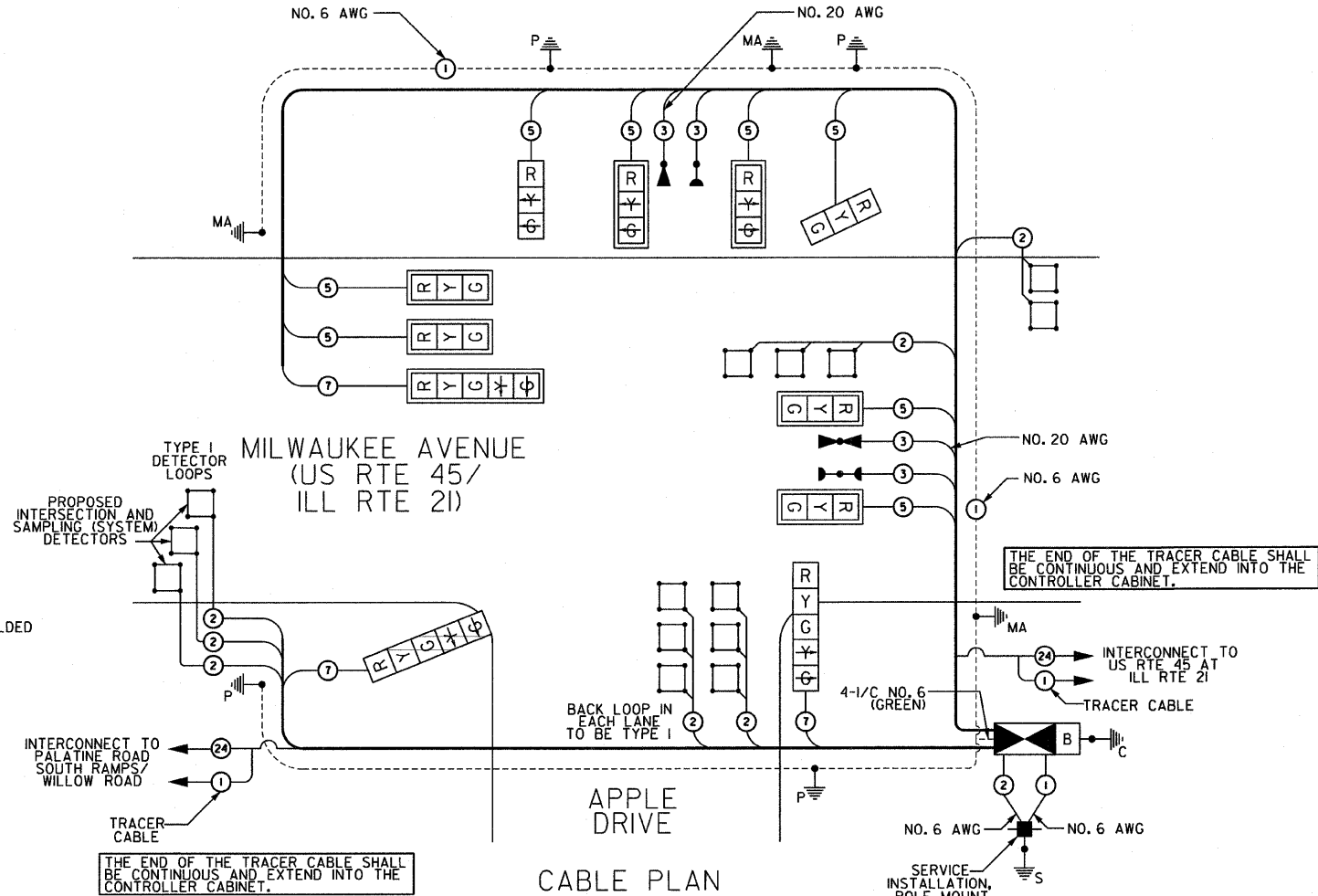


F.A.P. RTE.	SECTION	COUNTY	TOTAL SHEETS	SHEET NO.
374	3268F-R-1	COOK	279	175
STA. TO STA.		FED. ROAD DIST. NO. ILLINOIS FED. AID PROJECT		
CONTRACT NO. 62387				

CABLE PLAN LEGEND

EXISTING	PROPOSED	DESCRIPTION
		8" (200mm) TRAFFIC SIGNAL SECTION
		12" (300mm) TRAFFIC SIGNAL SECTION
		12" (300mm) PEDESTRIAN SIGNAL SECTION
		CONTROLLER CABINET
		SERVICE INSTALLATION
		TELEPHONE CONNECTION
		MAGNETIC DETECTOR
		EMERGENCY VEHICLE LIGHT DETECTOR
		CONFIRMATION BEACON
		PUSH-BUTTON DETECTOR
		VEHICLE DETECTOR, INDUCTION LOOP (PERFORMED UNLESS NOTED OTHERWISE)
		MICROWAVE VEHICLE SENSOR
		SIGNAL FACE WITH BACKPLATE *P* INDICATES PROGRAMMED HEAD
		RAILROAD CONTROL CABINET
		ILLUMINATED SIGN "NO LEFT TURN"
		ILLUMINATED SIGN "NO RIGHT TURN"
		GROUND ROD AT HANDHOLE (H), DOUBLE HANDHOLE (H), OR CONTROLLER (C)
		GROUND ROD AT POST (P), OR MAST ARM POLE (MA)
		GROUND ROD AT ELECTRIC SERVICE INSTALLATION
		GROUND CABLE IN CONDUIT NO. 6 SOLID COPPER (GREEN)
		FIBER OPTIC CABLE IN CONDUIT NO. 62.5/125 MM2F SMI2F
		UNINTERRUPTIBLE POWER SUPPLY

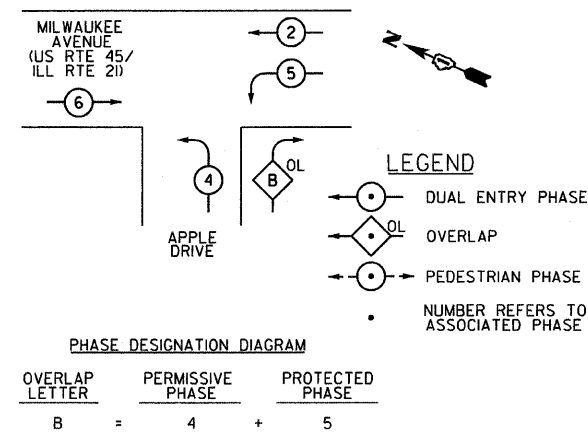


SCHEDULE OF QUANTITIES

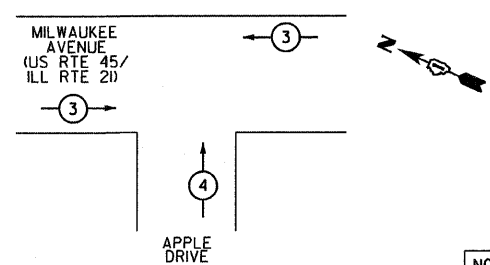
ITEM	UNIT	QUANTITY
SIGN PANEL - TYPE 1	SQ FT	13.5
CONDUIT IN TRENCH, 2" DIA., GALVANIZED STEEL	FOOT	448
CONDUIT IN TRENCH, 2 1/2" DIA., GALVANIZED STEEL	FOOT	100
CONDUIT IN TRENCH, 4" DIA., GALVANIZED STEEL	FOOT	120
CONDUIT PUSHED, 2" DIA., GALVANIZED STEEL	FOOT	35
CONDUIT PUSHED, 4" DIA., GALVANIZED STEEL	FOOT	192
HANDHOLE	EACH	7
DOUBLE HANDHOLE	EACH	1
TRENCH AND BACKFILL FOR ELECTRICAL WORK	FOOT	750
FULL-ACTUATED CONTROLLER AND TYPE IV CABINET, SPECIAL	EACH	1
TRANSCEIVER - FIBER OPTIC	EACH	1
ELECTRIC CABLE IN CONDUIT, SIGNAL NO. 14 3C	FOOT	291
ELECTRIC CABLE IN CONDUIT, SIGNAL NO. 14 5C	FOOT	1665
ELECTRIC CABLE IN CONDUIT, SIGNAL NO. 14 7C	FOOT	543
ELECTRIC CABLE IN CONDUIT, LEAD-IN, NO. 14 1 PAIR	FOOT	1690
ELECTRIC CABLE IN CONDUIT, SERVICE, NO. 6 2C	FOOT	30
TRAFFIC SIGNAL POST, GALVANIZED STEEL 14 FT.	EACH	2
TRAFFIC SIGNAL POST, GALVANIZED STEEL 16 FT.	EACH	2
STEEL MAST ARM ASSEMBLY AND POLE, 24 FT.	EACH	1
STEEL MAST ARM ASSEMBLY AND POLE, 36 FT.	EACH	1
STEEL COMBINATION MAST ARM ASSEMBLY AND POLE 36 FT.	EACH	1
CONCRETE FOUNDATION, TYPE A	FOOT	16
CONCRETE FOUNDATION, TYPE C	FOOT	4
CONCRETE FOUNDATION, TYPE E 30-INCH DIAMETER	FOOT	23.5
CONCRETE FOUNDATION, TYPE E 36-INCH DIAMETER	FOOT	11
SIGNAL HEAD, LED, 1-FACE, 3-SECTION, MAST-ARM MOUNTED	EACH	6
SIGNAL HEAD, LED, 1-FACE, 3-SECTION, BRACKET MOUNTED	EACH	2
SIGNAL HEAD, LED, 1-FACE, 5-SECTION, BRACKET MOUNTED	EACH	2
SIGNAL HEAD, LED, 1-FACE, 5-SECTION, MAST-ARM MOUNTED	EACH	1
TRAFFIC SIGNAL BACKPLATE, LOUVERED, ALUMINUM	EACH	7
INDUCTIVE LOOP DETECTOR	EACH	7
DETECTOR LOOP, TYPE I	FOOT	183
LIGHT DETECTOR	EACH	2
LIGHT DETECTOR AMPLIFIER	EACH	1
TEMPORARY TRAFFIC SIGNAL INSTALLATION	EACH	1
REMOVE EXISTING TRAFFIC SIGNAL EQUIPMENT	EACH	1
REMOVE EXISTING HANDHOLE	EACH	7
REMOVE EXISTING CONCRETE FOUNDATION	EACH	7
PERFORMED DETECTOR LOOP	FOOT	298
SERVICE INSTALLATION, POLE MOUNT	EACH	1
UNINTERRUPTIBLE POWER SUPPLY	EACH	1
ELECTRIC CABLE IN CONDUIT, GROUNDING NO. 6 1C	FOOT	710
ELECTRIC CABLE IN CONDUIT NO. 20 3/C, TWISTED, SHIELDED	FOOT	310

NOTE: 100% OF THE COST OF ITEMS DENOTED WITH A * IS PAYABLE BY THE PROSPECT HEIGHTS FIRE PROTECTION DISTRICT.

PROPOSED CONTROLLER SEQUENCE



PROPOSED EMERGENCY VEHICLE PREEMPTION SEQUENCE



EMERGENCY VEHICLE PREEMPTOR	3	4
MOVEMENT	←	↑

NOTE: THE TRAFFIC SIGNAL CONTROL EQUIPMENT FOR THIS INTERSECTION SHALL BE "ECONOLITE" BRAND TO MATCH THE EXISTING SYSTEM.

TYPE	NO. OF LAMPS	WATTAGE	% OPERATION	TOTAL WATTAGE
SIGNAL (RED)	11	135	0.50	93.5
(YELLOW)	11	135	0.25	68.75
(GREEN)	11	135	0.25	41.25
ARROW	6	135	0.10	7.2
PED. SIGNAL	90	25	1.00	2250
CONTROLLER	1	100	1.00	100
ILLUM. SIGN	252		0.05	12.6
FLASHER			0.50	50
TOTAL				310.7

ENERGY COSTS TO: CITY OF PROSPECT HEIGHTS
8 NORTH ELMHURST ROAD
PROSPECT HEIGHTS, ILLINOIS 60070

ENERGY SUPPLY CONTACT: MS. JUDY SCHOMER
PHONE: (847) 870-2056
COMPANY: COMED

FOUNDATION (DEPTH)	FT. (m)	CABLE SLACK	FT. (m)	VERTICAL	FT. (m)
TYPE A - POST	4 (1.2)	HANDHOLE	6.5 (2.0)	ALL FOUNDATIONS	3.5 (1.0)
D - CONTROLLER	4 (1.2)	DOUBLE HANDHOLE	13 (4.0)	MAST ARM (L) POLE	20'+L-2' (6m+L-0.6m)
E - M. ARM POLE		SIGNAL POST	2 (0.6)	BRACKET MOUNTED	13 (4.0)
24" (600 mm)	10 (3.0)	CONTROLLER CAB.	1 (0.3)	PED PUSHBUTTON	4 (1.2)
30" (750 mm)	15 (4.6)	FIBER OPTIC	13 (4.0)	ELECTRIC SERVICE	13.5 (4.1)
		ELECTRIC SERVICE	1 (0.3)	SERVICE TO GROUND	13.5 (4.1)
		GROUND CABLE	1 (0.3)	POST MOUNTED	6 (1.8)

SPAAN Tech, Inc.
311 S. Wacker Drive, Suite 2400
Chicago, Illinois 60606
phone: 312.277.8800
fax: 312.277.8808
web: www.SpaanTech.com

REVISIONS		ILLINOIS DEPARTMENT OF TRANSPORTATION	
NAME	DATE		
		SCHEDULE OF QUANTITIES, CABLE PLAN, AND PHASE DESIGNATION DIAGRAM MILWAUKEE AVENUE (US RTE 45/ILL RTE 21) AT APPLE DRIVE	
		SCALE: NONE	DRAWN BY: RAS
		DATE: 02/05/08	DESIGN BY: RAS
			CHECKED BY: ADD

defcshd
 07/67/2000 - ILL Rte 21 - IDOT Dist 1
 pa\0767\2000 - ILL Rte 21 - IDOT Dist
 1/30/2008 9:39:01 AM
 I:\Working Files\Drawing Files\Shi\Final\TS\TS-15.dgn
 20,0000 ft / IN.