

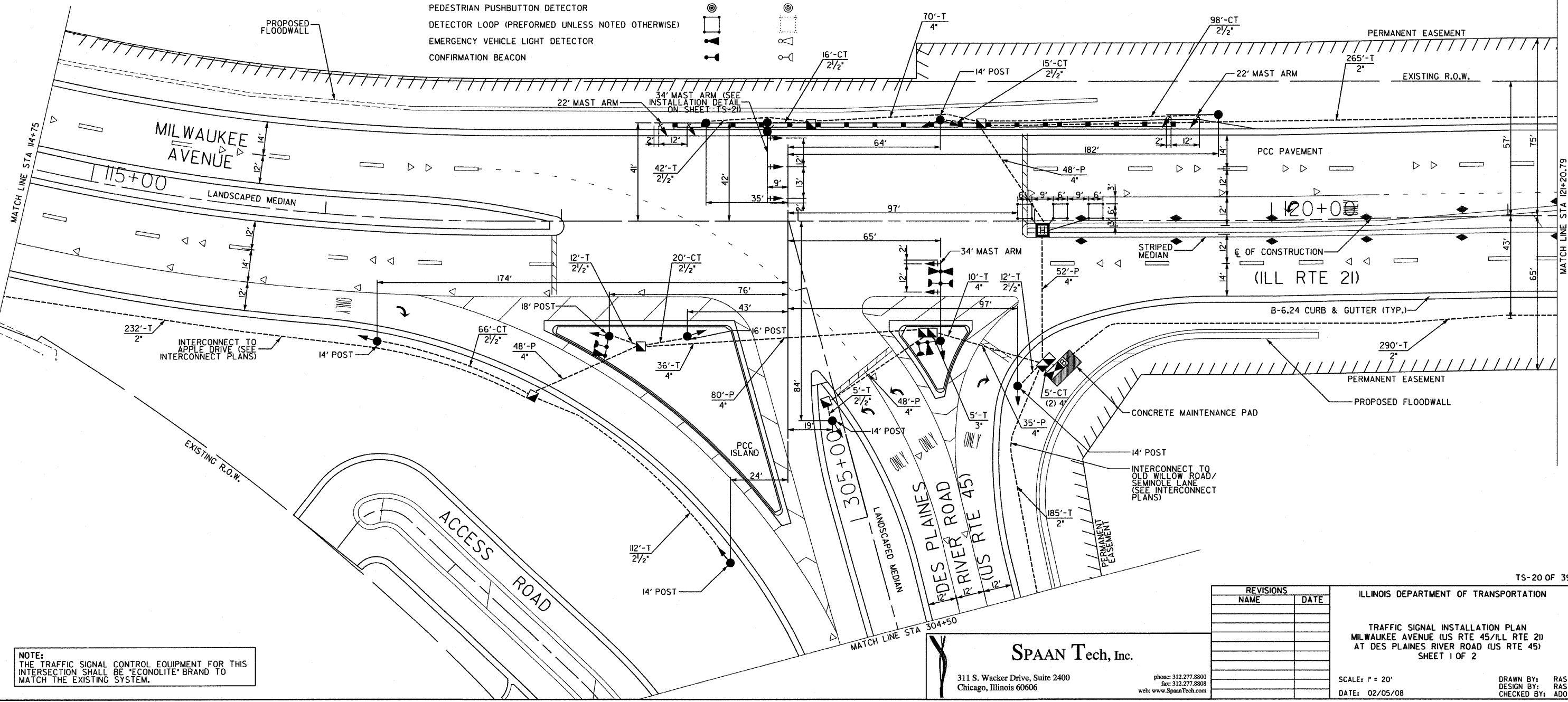
F.A.P. RTE.	SECTION	COUNTY	TOTAL SHEETS	SHEET NO.
374	3268F-R-1	COOK	279	180
STA. 114+75		TO STA. 121+20.79		
FED. ROAD DIST. NO.	ILLINOIS	FED. AID PROJECT		
CONTRACT NO. 62387				

TRAFFIC SIGNAL LEGEND

CONTROLLER		EXISTING	
UNINTERRUPTIBLE POWER SUPPLY		EXISTING	
SERVICE INSTALLATION		EXISTING	
SIGNAL HEAD		EXISTING	
SIGNAL HEAD WITH BACKPLATE		EXISTING	
SIGNAL HEAD, PEDESTRIAN		EXISTING	
SIGNAL POST		EXISTING	
MAST ARM ASSEMBLY AND POLE, STEEL		EXISTING	
MAST ARM ASSEMBLY AND POLE, ALUMINUM		EXISTING	
COMBINATION MAST ARM ASSEMBLY AND POLE, STEEL WITH LUMINAIRE		EXISTING	
UNIT DUCT	UD		
COMMON TRENCH	CT		
HANDHOLE		EXISTING	
HEAVY-DUTY HANDHOLE		EXISTING	
DOUBLE HANDHOLE		EXISTING	
G.S. CONDUIT IN TRENCH (T) OR PUSHED (P)		EXISTING	
PEDESTRIAN PUSHBUTTON DETECTOR		EXISTING	
DETECTOR LOOP (PERFORMED UNLESS NOTED OTHERWISE)		EXISTING	
EMERGENCY VEHICLE LIGHT DETECTOR		EXISTING	
CONFIRMATION BEACON		EXISTING	

TRAFFIC SIGNAL EQUIPMENT LOCATIONS

ITEM	LOCATION	ITEM	LOCATION
HANDHOLE	STA 114+69, 55.5' RT	DOUBLE HANDHOLE	STA 118+55, 47' RT
TYPE A FOUNDATION	STA 116+25, 52' RT	TYPE E FOUNDATION (30" DIA.)	STA 118+60, 50.5' RT
HANDHOLE	STA 116+88, 74' RT	TYPE A FOUNDATION	STA 118+60, 42.5' LT
TYPE A FOUNDATION	STA 117+20, 48.5' RT	HANDHOLE	STA 118+77, 4' LT
HANDHOLE	STA 117+33.5, 53' RT	HEAVY-DUTY HANDHOLE	STA 119+03, 4' RT
TYPE A FOUNDATION	STA 117+53, 48.5' RT	DOUBLE HANDHOLE	STA 119+05, 60' RT
TYPE E FOUNDATION (30" DIA.)	STA 117+61, 41.5' LT	TYPE C FOUNDATION	STA 119+09.5, 62' RT
TYPE A FOUNDATION	STA 117+71.5, 144' RT	TYPE A FOUNDATION	STA 118+93, 70' RT
TYPE E FOUNDATION (30" DIA.)	STA 117+87, 41.5' LT	TYPE E FOUNDATION (30" DIA.)	STA 119+78, 44.5' LT
HANDHOLE	STA 118+05.5, 4' LT	HANDHOLE	STA 121+46.5, 42' LT
HANDHOLE	STA 118+12, 76.5' RT	HANDHOLE	STA 122+00, 4' RT
TYPE A FOUNDATION	STA 118+14.5, 84' RT	HANDHOLE	STA 303+60, 51' RT (US RTE 45)



NOTE:
THE TRAFFIC SIGNAL CONTROL EQUIPMENT FOR THIS INTERSECTION SHALL BE 'ECONOLITE' BRAND TO MATCH THE EXISTING SYSTEM.

SPAAN Tech, Inc.

311 S. Wacker Drive, Suite 2400
Chicago, Illinois 60606
Phone: 312.277.8800
Fax: 312.277.8808
Web: www.SpaanTech.com

REVISIONS	
NAME	DATE

ILLINOIS DEPARTMENT OF TRANSPORTATION

TRAFFIC SIGNAL INSTALLATION PLAN
MILWAUKEE AVENUE (US RTE 45/ILL RTE 21)
AT DES PLAINES RIVER ROAD (US RTE 45)
SHEET 1 OF 2

SCALE: 1" = 20'
DATE: 02/05/08

DRAWN BY: RAS
DESIGN BY: RAS
CHECKED BY: ADO

default
 Unsaved
 ILL RTE 21 - DDOT Dist 1
 ILL RTE 21 - DDOT Dist 1
 I:\Work\King Files\Drawing Files\SHY\Final\TSATS-20.dgn
 20.0000 ft / IN.
 10:21:44 AM
 2/5/2008