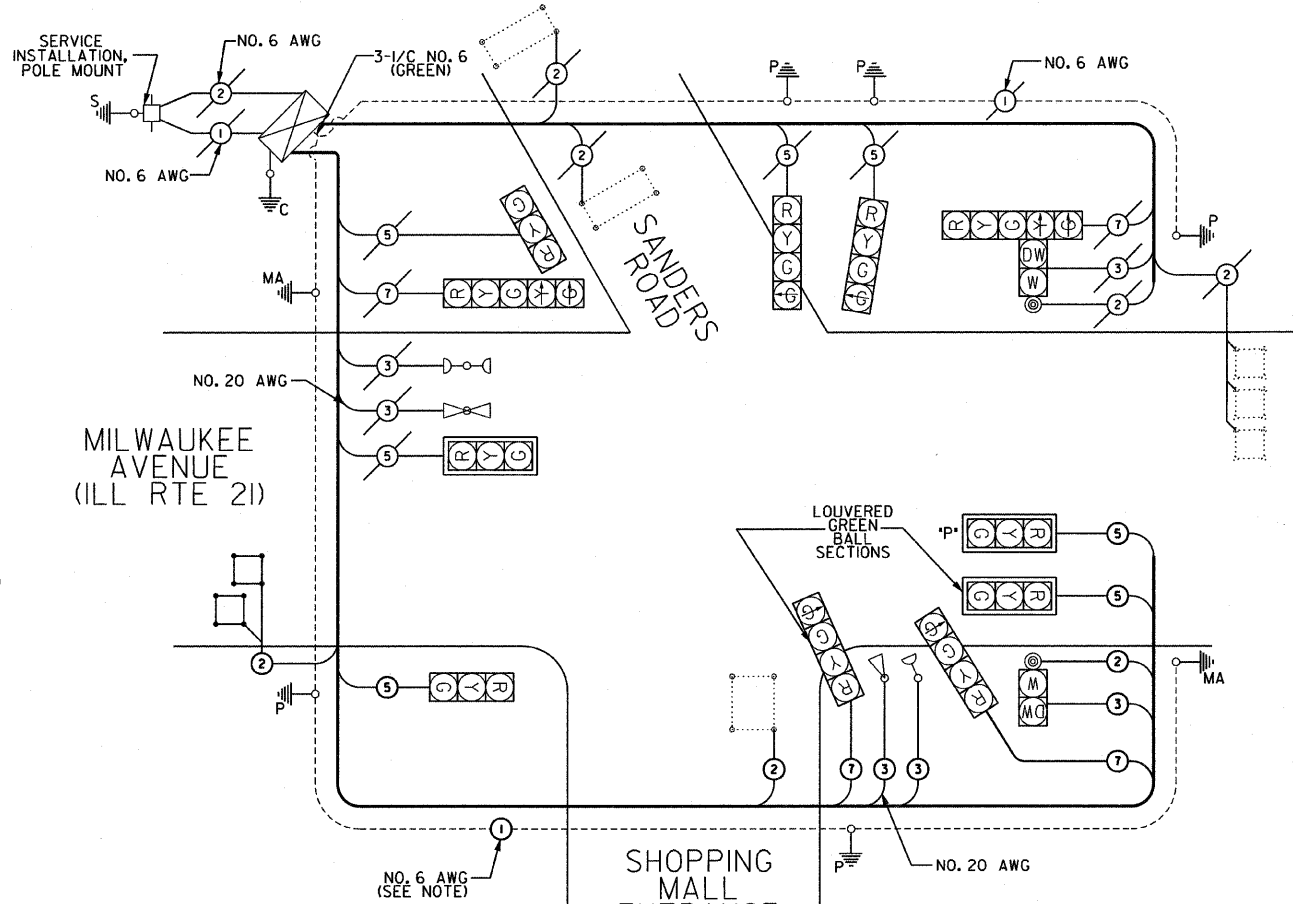


F.A.P. RTE.	SECTION	COUNTY	TOTAL SHEETS	SHEET NO.
374	3268F-R-1	COOK	279	192
STA.		TO STA.		
FED. ROAD DIST. NO.	ILLINOIS	FED. AID PROJECT		
CONTRACT NO. 62387				

CABLE PLAN LEGEND

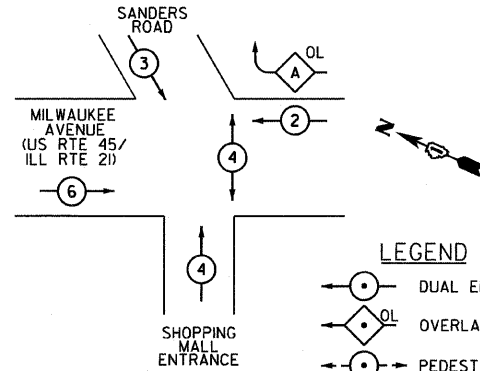
EXISTING	PROPOSED	
		8" (200mm) TRAFFIC SIGNAL SECTION
		12" (300mm) TRAFFIC SIGNAL SECTION
		12" (300mm) PEDESTRIAN SIGNAL SECTION
		12" (300mm) PEDESTRIAN SIGNAL SECTION
		CONTROLLER CABINET
		SERVICE INSTALLATION
		TELEPHONE CONNECTION
		MAGNETIC DETECTOR
		EMERGENCY VEHICLE LIGHT DETECTOR
		CONFIRMATION BEACON
		PUSH-BUTTON DETECTOR
		VEHICLE DETECTOR, INDUCTION LOOP (PERFORMED UNLESS NOTED OTHERWISE)
		DENOTES NUMBER OF CONDUCTORS. ALL CABLE NO. 14 EXCEPT AS INDICATED. ALL LOOP DETECTOR CABLE TO BE SHIELDED.
		MICROWAVE VEHICLE SENSOR
		SIGNAL FACE WITH BACKPLATE. *P* INDICATES PROGRAMMED HEAD.
		RAILROAD CONTROL CABINET
		ILLUMINATED SIGN "NO LEFT TURN"
		ILLUMINATED SIGN "NO RIGHT TURN"
		GROUND ROD AT HANDHOLE (H), DOUBLE HANDHOLE (H), OR CONTROLLER (C)
		GROUND ROD AT POST (P), OR MAST ARM POLE (MA)
		GROUND ROD AT ELECTRIC SERVICE INSTALLATION
		GROUND CABLE IN CONDUIT NO. 6 SOLID COPPER (GREEN)
		FIBER OPTIC CABLE IN CONDUIT NO. 62.5/125 MM2F SM12F
		UNINTERRUPTIBLE POWER SUPPLY



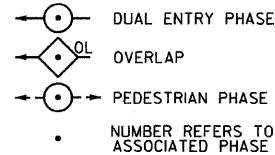
NOTE: INSTALL NEW GROUND CABLE IN NEW CONDUIT RUNS CARRYING SIGNAL CABLE. SPLICING THE NEW GROUND CABLES TO EXISTING GROUND CABLES AT EXISTING HANDHOLES IS INCLUDED IN THE COST OF THE GROUND CABLE.

CABLE PLAN

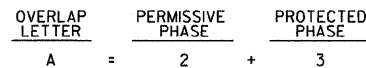
EXISTING CONTROLLER SEQUENCE



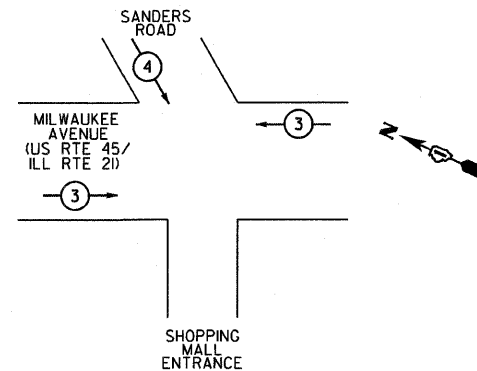
LEGEND



PHASE DESIGNATION DIAGRAM



EXISTING EMERGENCY VEHICLE PRIORITY SEQUENCE



EMERGENCY VEHICLE PREEMPTOR	3	4
MOVEMENT	←	↓

I:\Working Files\Working Files\Shrt\Final\TSATS-32.dgn
 20,0000 ft / IN.
 1/30/2008 10:16 PM
 0767000 - ILL RTE 21 - IDOT Dist 1
 0767000 - ILL RTE 21 - IDOT Dist 1
 0767000 - ILL RTE 21 - IDOT Dist 1
 0767000 - ILL RTE 21 - IDOT Dist 1
 0767000 - ILL RTE 21 - IDOT Dist 1

TYPE	NO. OF LAMPS	WATTAGE		% OPERATION	TOTAL WATTAGE
		INCAND.	LED		
SIGNAL (RED)	11	135	17	0.50	742.5
(YELLOW)	11	135	25	0.25	371.25
(GREEN)	15	135	15	0.25	506.25
ARROW	4	135	12	0.10	54
PED. SIGNAL		90	25	1.00	
CONTROLLER	1	100	100	1.00	100
ILLUM. SIGN		252		0.05	
FLASHER				0.50	
ENERGY COSTS TO:				TOTAL =	1774

IDOT DIVISION OF HIGHWAYS / DISTRICT 1 (75%)
 201 WEST CENTER COURT/SCHAUMBURG, ILLINOIS 60196
 ANGELOPOULOUST AND GIANNOS (25%)
 ENERGY SUPPLY CONTACT: MS. JUDY SCHOMER
 PHONE: (847) 870-2056
 COMPANY: COMED

FOUNDATION (DEPTH)	FT. (m)	CABLE SLACK	FT. (m)	VERTICAL	FT. (m)
TYPE A - POST	4 (1.2)	HANDHOLE	6.5 (2.0)	ALL FOUNDATIONS	3.5 (1.0)
D - CONTROLLER	4 (1.2)	DOUBLE HANDHOLE	13 (4.0)	MAST ARM (L) POLE	20'+L-2=
E - M. ARM POLE		SIGNAL POST	2 (1.0)	(6m+L-0.6m)=	
24" (600 mm)	10 (3.0)	CONTROLLER CAB.	1 (0.5)	BRACKET MOUNTED	13 (4.0)
30" (750 mm)	15 (4.6)	FIBER OPTIC	13 (4.0)	PED PUSHBUTTON	4 (1.2)
		ELECTRIC SERVICE	1 (0.5)	ELECTRIC SERVICE	13.5 (4.1)
		GROUND CABLE	1 (0.5)	SERVICE TO GROUND	13.5 (4.1)
				POST MOUNTED	6 (1.8)

SPAAN Tech, Inc.
 311 S. Wacker Drive, Suite 2400
 Chicago, Illinois 60606
 phone: 312.277.8800
 fax: 312.277.8808
 web: www.SpaanTech.com

REVISIONS		ILLINOIS DEPARTMENT OF TRANSPORTATION
NAME	DATE	
		SCHEDULE OF QUANTITIES, CABLE PLAN, AND PHASE DESIGNATION DIAGRAM MILWAUKEE AVENUE (ILL RTE 21) AT SANDERS ROAD

SCALE: NONE
 DATE: 02/05/08
 DRAWN BY: RAS
 DESIGN BY: RAS
 CHECKED BY: ADD