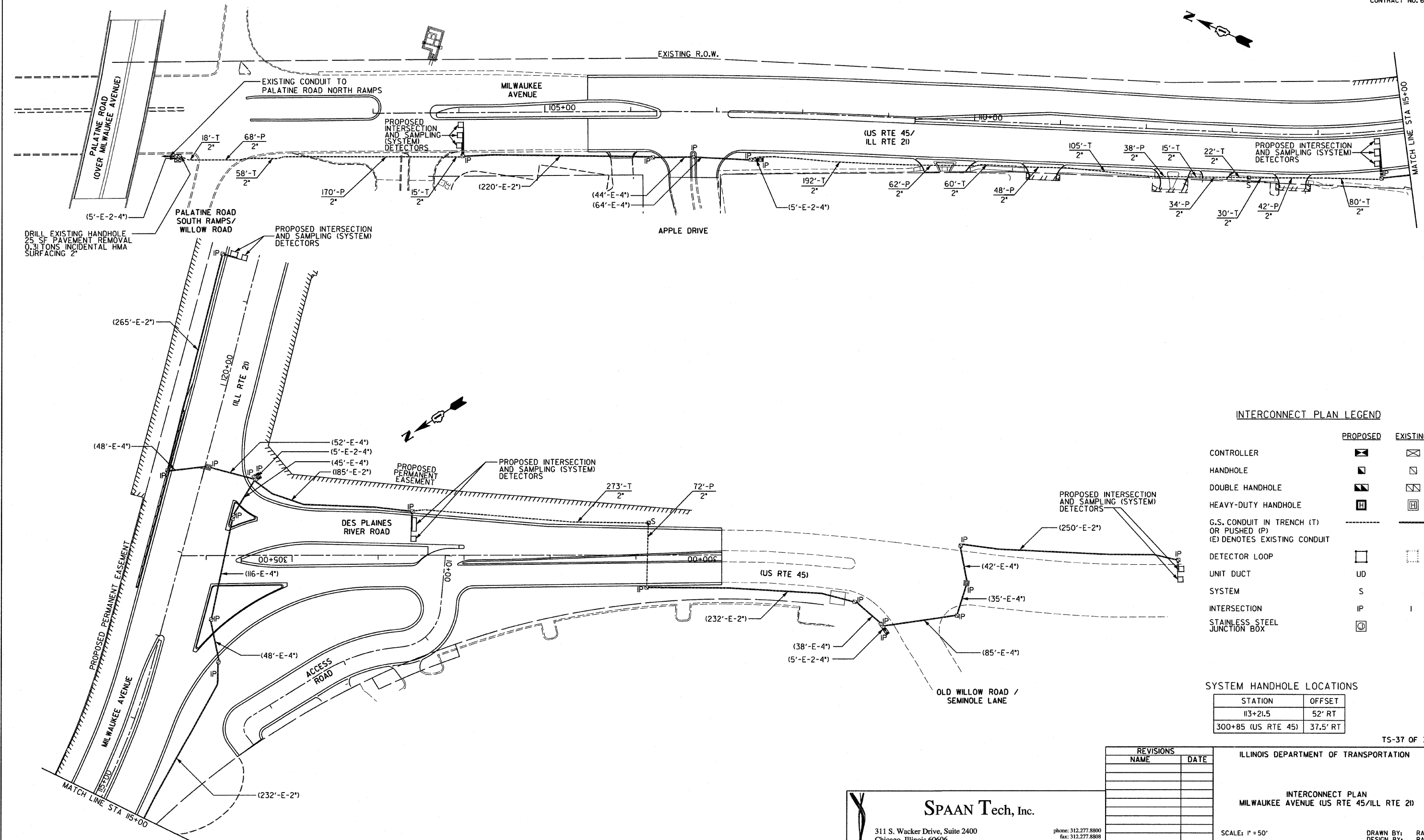


F.A.P. RTE.	SECTION	COUNTY	TOTAL SHEETS	SHEET NO.
374	3268F-R-1	COOK	279	197
STA.		TO STA.		
FED. ROAD DIST. NO.	ILLINOIS	FED. AID PROJECT		
CONTRACT NO. 62387				



INTERCONNECT PLAN LEGEND

	PROPOSED	EXISTING
CONTROLLER		
HANDHOLE		
DOUBLE HANDHOLE		
HEAVY-DUTY HANDHOLE		
G.S. CONDUIT IN TRENCH (T) OR PUSHED (P)		
(E) DENOTES EXISTING CONDUIT		
DETECTOR LOOP		
UNIT DUCT	UD	
SYSTEM	S	
INTERSECTION	IP	I
STAINLESS STEEL JUNCTION BOX		

SYSTEM HANDHOLE LOCATIONS

STATION	OFFSET
113+21.5	52' RT
300+85 (US RTE 45)	37.5' RT

TS-37 OF 39

REVISIONS	
NAME	DATE

ILLINOIS DEPARTMENT OF TRANSPORTATION

INTERCONNECT PLAN
MILWAUKEE AVENUE (US RTE 45/ILL RTE 21)

SCALE: 1" = 50'
DATE: 02/05/08

DRAWN BY: RAS
DESIGN BY: RAS
CHECKED BY: ADO

SPAAN Tech, Inc.

311 S. Wacker Drive, Suite 2400
Chicago, Illinois 60606

phone: 312.277.8800
fax: 312.277.8808
web: www.SpaanTech.com

default
 07167.000 - ILL Rte 21 - DOT Dist 1
 P:\07167.000 - ILL Rte 21 - DOT Dist 1\Working Files\Drawing Files\SH\Final\TS\TS-37.dgn
 50,00000 ft / IN.
 1/30/2008 2:08:37 PM