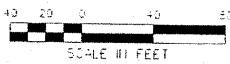
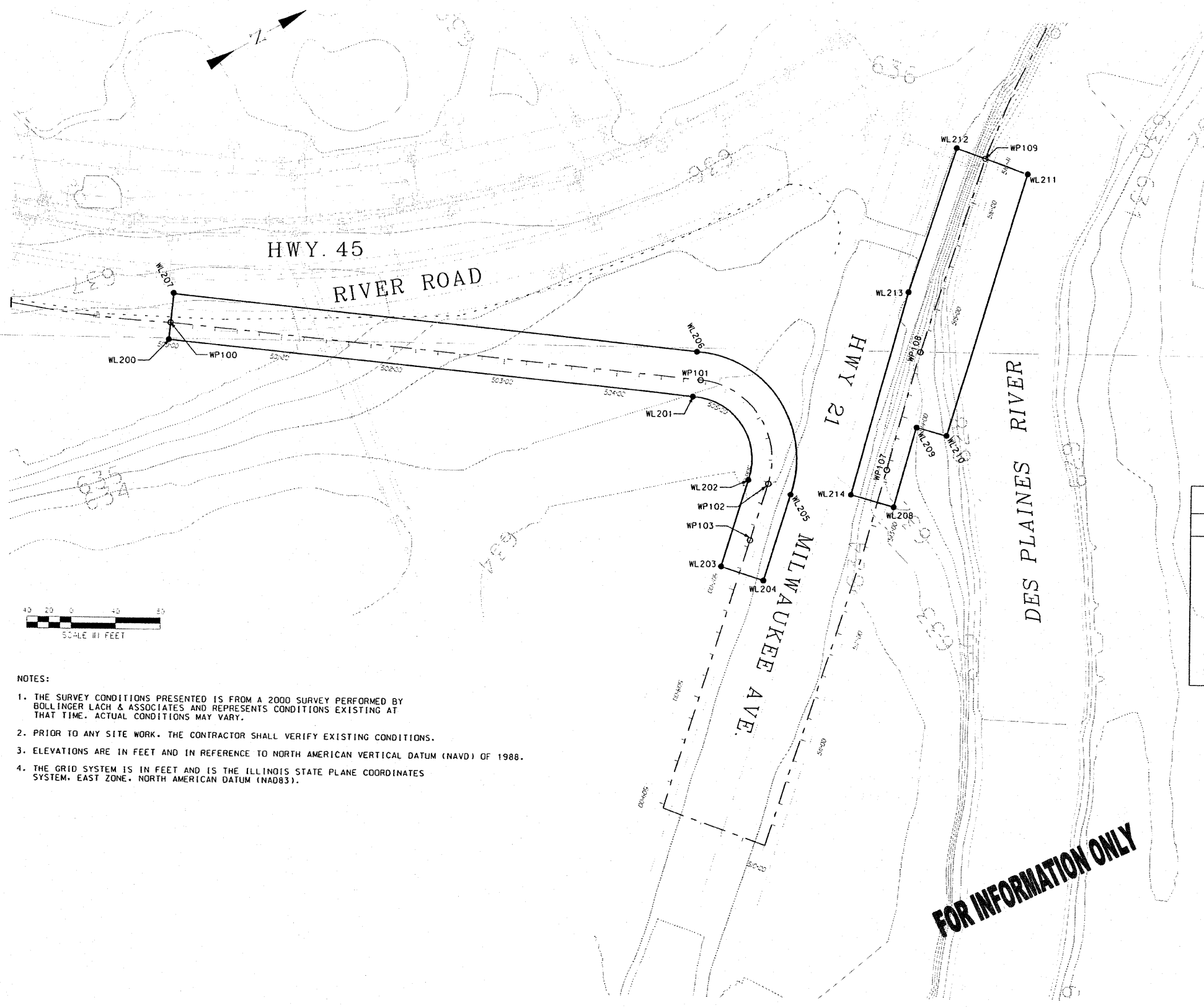




US Army Corps of Engineers Chicago District



NOTES:

- 1. THE SURVEY CONDITIONS PRESENTED IS FROM A 2000 SURVEY PERFORMED BY BOLLINGER LACH & ASSOCIATES AND REPRESENTS CONDITIONS EXISTING AT THAT TIME. ACTUAL CONDITIONS MAY VARY.
- 2. PRIOR TO ANY SITE WORK, THE CONTRACTOR SHALL VERIFY EXISTING CONDITIONS.
- 3. ELEVATIONS ARE IN FEET AND IN REFERENCE TO NORTH AMERICAN VERTICAL DATUM (NAVD) OF 1988.
- 4. THE GRID SYSTEM IS IN FEET AND IS THE ILLINOIS STATE PLANE COORDINATES SYSTEM, EAST ZONE, NORTH AMERICAN DATUM (NAD83).

WORKLIMITS COORDINATES		
PT.	NORTHING	EASTING
WL200	1980254.68	1105098.28
WL201	1980639.10	1105369.80
CC	1980609.91	1105416.38
Radius:	54.96	
WL202	1980646.10	1105457.75
WL203	1980587.58	1105512.62
WL204	1980614.49	1105541.80
WL205	1980672.81	1105487.57
CC	1980609.91	1105416.38
Radius:	95.00	
WL206	1980661.08	1105336.33
WL207	1980278.29	1105064.85
WL208	1980748.34	1105542.33
WL209	1980800.42	1105490.47
WL210	1980820.01	1105510.13
WL211	1980996.24	1105342.03
WL212	1980952.01	1105291.10
WL213	1980852.58	1105382.09
WL214	1980720.11	1105513.99

WORKPOINT COORDINATES			
PT.	STATIONING	NORTHING	EASTING
WP100	500+00.00	1980263.34	1105086.02
WP101	504+75.32	1980651.72	1105360.04
CC		1980609.88	1105416.40
Radius:	70.00		
WP102	506+01.08	1980660.06	1105469.24
WP103	506+50.00	1980624.23	1105502.55
WP107	513+50.00	1980758.40	1105511.13
WP108	514+59.31	1980835.86	1105433.99
WP109	516+40.76	1980969.84	1105311.64

LEGEND

- WPXX SSP DRIVING LINE WORK POINT
- WLXX WORK LIMITS POINT
- WORK LIMITS
- - - FLOODWALL CENTERLINE

SYMBOL	AMENDMENT DESCRIPTION	DATE	APPROVED SYMBOL	DESCRIPTION	DATE	APPROVED

DESIGNED BY: GA	DATE: 02/05/2008
DRAWN BY: DB	SCALE: AS SHOWN
CHECKED BY: JG	SOLICITATION NUMBER: NA
SUBMITTED BY: JOHN GROBOSKI	DATE: NA

U.S. ARMY ENGINEER DISTRICT
CORPS OF ENGINEERS
CHICAGO, ILLINOIS

IDOT FAP RT 374 (IL
ROUTE 374), MILWAUKEE AVE
SECTION 3266F-R-1
FLOODWALL
WORK LIMITS AND CONTROL
POINTS DATA

SHEET REFERENCE NUMBER:
C-03
SHEET 268 OF 279