

F.A.I. RTE.	SECTION	COUNTY	TOTAL SHEETS	SHEET NO.
90/94	*	COOK	29	1
62993			+1	
			30	

STATE OF ILLINOIS
DEPARTMENT OF TRANSPORTATION
DIVISION OF HIGHWAYS

**PLANS FOR PROPOSED
FEDERAL AID HIGHWAY**

F.A.I. ROUTE 90/94 (DAN RYAN EXPRESSWAY)

SECTION 2324.6-1P-I-1

**NORTHBOUND KNEE WALLS
(35TH ST TO 33RD ST)**

**COOK COUNTY
C-91-251-05**

**DESIGN NUMBER
D-91-417-01**



SIGNATURE *Dennis D. Mosier*
DATE Feb. 7, 2008
EXPIRES Nov. 30, 2009



SIGNATURE *John D. Colwell*
DATE Feb. 7, 2008
EXPIRES Nov. 30, 2009



SIGNATURE *Brian L. Umbright*
DATE Feb. 7, 2008
EXPIRES Nov. 30, 2008



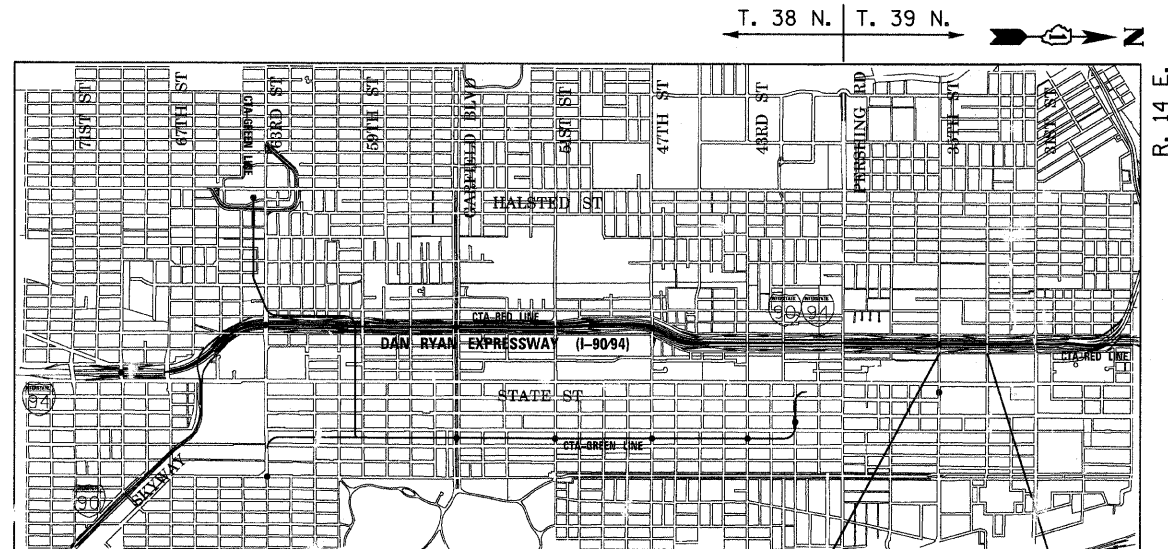
LOCATION OF SECTION INDICATED THUS: - [shaded area]

PROJECT LOCATED IN CITY OF CHICAGO

DESIGN DESIGNATION

LA SALLE ST: 8275 (20) URBAN COLLECTOR

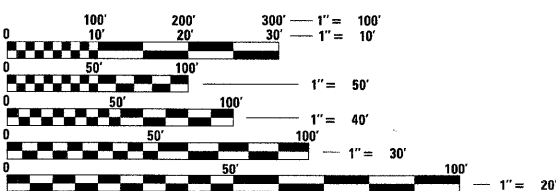
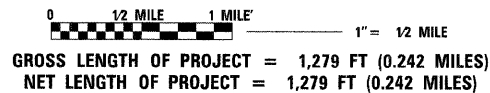
FRONTAGE ROAD:	ADT (2020)	DESIGN SPEED	POSTED SPEED
LA SALLE ST	15,000	30	25



PROJECT BEGINS
NB LA SALLE ST
STA 426 + 89

PROJECT ENDS
NB LA SALLE ST
STA 439 + 68

LOCATION MAP



FULL SIZE PLANS HAVE BEEN PREPARED USING STANDARD ENGINEERING SCALES. REDUCED SIZED PLANS WILL NOT CONFORM TO STANDARD SCALES. IN MAKING MEASUREMENTS ON REDUCED PLANS, THE ABOVE SCALES MAY BE USED.

**BEFORE EXCAVATING CALL:
CHICAGO UTILITY ALERT NETWORK
(312) 744-7000**

CONTRACT NO. 62993

STATE OF ILLINOIS
DEPARTMENT OF TRANSPORTATION
DIVISION OF HIGHWAYS

SUBMITTED FEBRUARY 8, 2008

Diane M. O'Keefe
DEPUTY DIRECTOR OF HIGHWAYS, REGION ENGINEER
March 21, 2008

Eric E. Harmon
ENGINEER OF DESIGN AND ENVIRONMENT
March 21, 2008

Christine M. Reed
DIRECTOR OF HIGHWAYS, CHIEF ENGINEER

**PRINTED BY THE AUTHORITY
OF THE STATE OF ILLINOIS**

BOWMAN, BARRETT & ASSOCIATES INC.
CONSULTING ENGINEERS
Chicago, Illinois
312.228.0100
www.bbandainc.com

DISTRICT ONE DESIGN/CONSULTANT SERVICES PROJECT MANAGER
RAJENDRA SHAH (847) 705-4555

PL\660\CGD\CH\IN\31F SHEETS\660_31F COVER.dgn