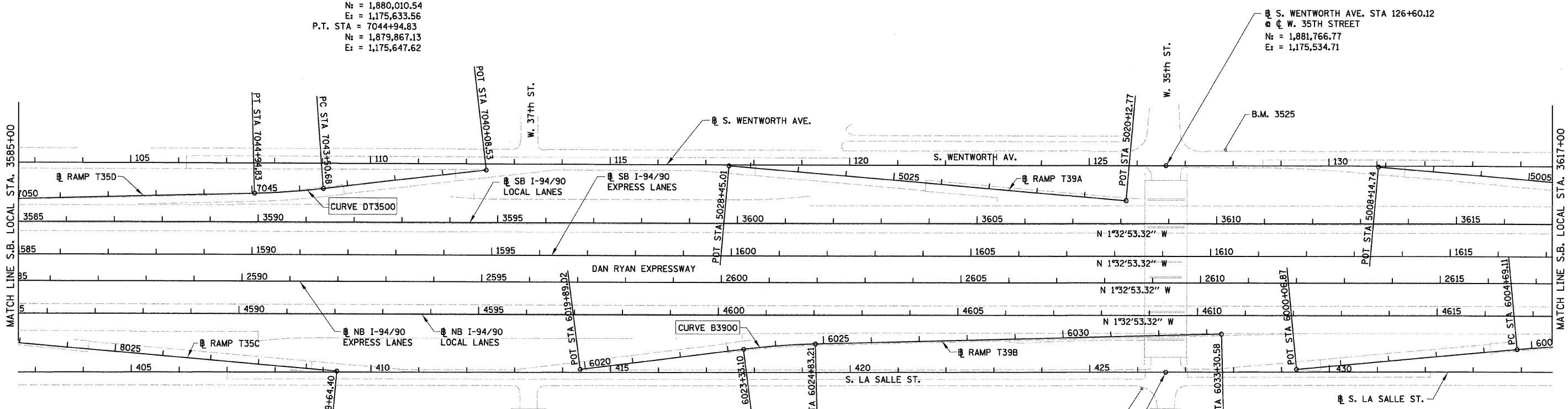


F.A.I.	SECTION	COUNTY	TOTAL SHEETS	SHEET NO.
94/90	*	COOK	29	7
STA.	TO STA.			
FED. ROAD DIST. NO.	ILLINOIS	FED. AID PROJECT		

62993

• 2324.6-1P-1-1

PROP. CURVE DT3500  
 P.I. STA = 7044+22.81  
 N<sub>c</sub> = 1,879,939.16  
 E = 1,175,643.87  
 Δ = 5° 14' 38" (RT)  
 D = 3° 38' 16"  
 R = 1,575.00'  
 T = 72.13'  
 L = 144.15'  
 E = 1.65'  
 e = 3.6%  
 S.A. = STA 7043+14.68  
 TO 7043+59.68  
 S.R. = STA 7044+85.83  
 TO 7045+30.83  
 P.C. STA = 7043+50.68  
 N<sub>c</sub> = 1,880,010.54  
 E<sub>c</sub> = 1,175,633.56  
 P.T. STA = 7044+94.83  
 N<sub>c</sub> = 1,879,867.13  
 E<sub>c</sub> = 1,175,647.62



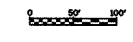
PROP. CURVE B3900  
 P.I. STA = 6024+08.22  
 N<sub>c</sub> = 1,880,970.99  
 E = 1,175,932.00  
 Δ = 5° 47' 44" (RT)  
 D = 3° 51' 39"  
 R = 1,484.00'  
 T = 75.12'  
 L = 150.11'  
 E = 1.90'  
 e = 3.7%  
 S.A. = STA 6022+97.10  
 TO 6023+42.10  
 S.R. = STA 6024+74.21  
 TO 6025+19.21  
 P.C. STA = 6023+33.10  
 N<sub>c</sub> = 1,880,896.76  
 E<sub>c</sub> = 1,175,943.46  
 P.T. STA = 6024+83.21  
 N<sub>c</sub> = 1,881,046.01  
 E<sub>c</sub> = 1,175,928.09

S. LASALLE ST. STA 426+58.57  
 W. 35TH STREET  
 N<sub>c</sub> = 1,881,778.46  
 E<sub>c</sub> = 1,175,967.25

- NOTES:
1. AVERAGE GRID TO GROUND CONVERSION FACTOR = 1.000010988654360
  2. FOR BENCH MARK INFORMATION, SEE SHEET ALT-16 OF ALIGNMENT PLAN SHEETS.
  3. FOR RAMP P.O.T. INFORMATION, SEE SHEET ALT-16 OF ALIGNMENT PLAN SHEETS.

REVISIONS	
NAME	DATE
REVISED	3-6-08

ILLINOIS DEPARTMENT OF TRANSPORTATION  
 F.A.I. 94/90 (DAN RYAN EXPRESSWAY)  
 NORTHBOUND KNEE WALLS (35TH ST TO 33RD ST)  
**ALIGNMENT PLAN**  
 SCALE: 1"=100'  
 DATE: 03/06/08  
 DRAWN BY: JDC  
 CHECKED BY: RS



BOWMAN, BARRETT & ASSOCIATES INC.  
 CONSULTING ENGINEERS  
 Chicago, Illinois  
 312.228.0100  
 www.bbandainc.com

ALT-03

12-23-15 PM 3/6/2008