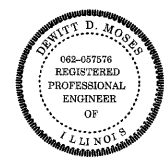
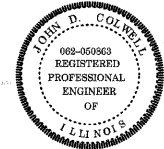


F.A.I. RTE.	SECTION	COUNTY	TOTAL SHEETS	SHEET NO.
90/94	*	COOK	20	1
62994			+1	21

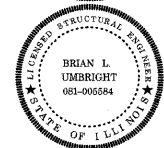
DESIGN NUMBER
D-91-417-01



SIGNATURE *Duway D. Moses*
DATE Feb. 7, 2008
EXPIRES Nov. 30, 2009



SIGNATURE *John D. Colwell*
DATE Feb. 7, 2008
EXPIRES Nov. 30, 2009

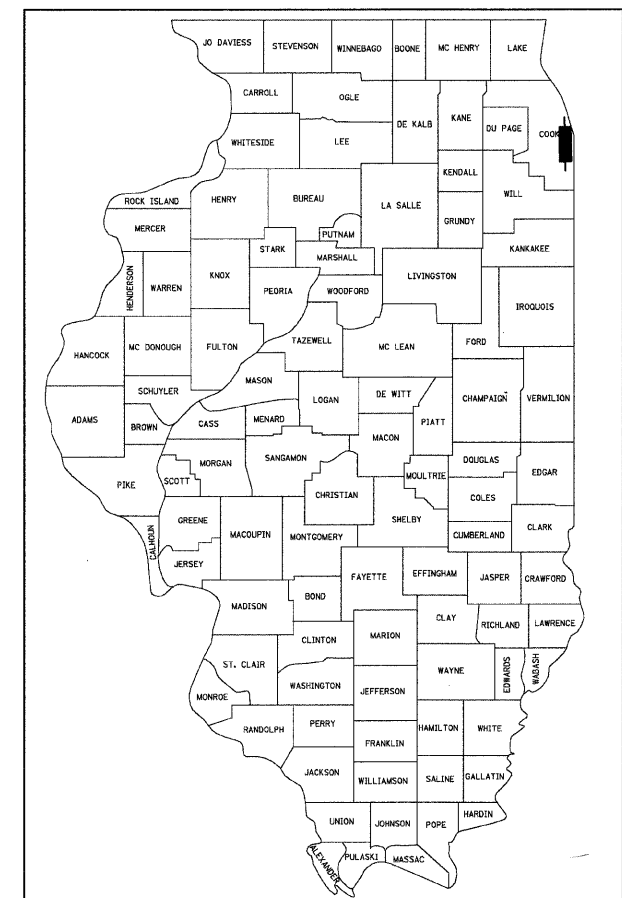


SIGNATURE *Brian L. Umbricht*
DATE Feb. 7, 2008
EXPIRES Nov. 30, 2008

STATE OF ILLINOIS
DEPARTMENT OF TRANSPORTATION
DIVISION OF HIGHWAYS

PLANS FOR PROPOSED FEDERAL AID HIGHWAY

F.A.I. ROUTE 90/94 (DAN RYAN EXPRESSWAY)
SECTION 2324.6-1P-I-2
NORTHBOUND KNEE WALLS
(33RD ST TO 31ST ST)
COOK COUNTY
C-91-252-05

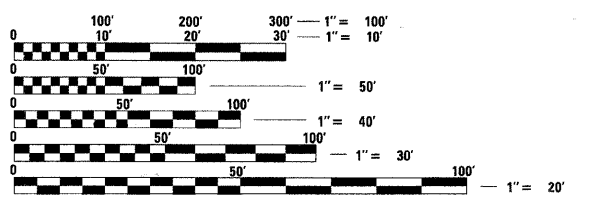


LOCATION OF SECTION INDICATED THUS: —

PROJECT LOCATED IN CITY OF CHICAGO

DESIGN DESIGNATION
LA SALLE ST: 8275 (20) URBAN COLLECTOR

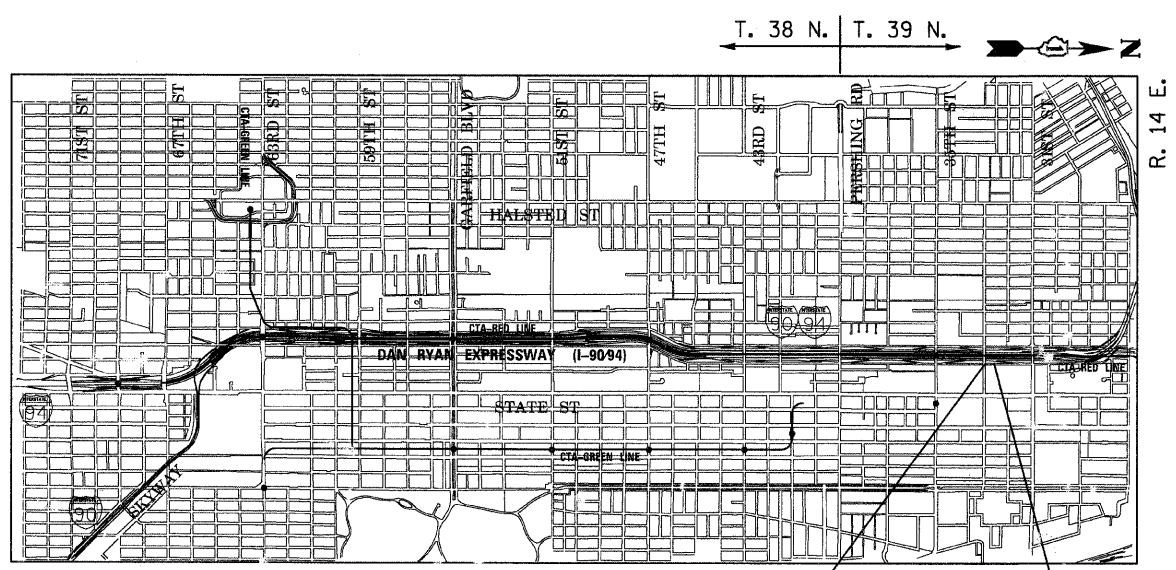
FRONTAGE ROAD:	ADT (2020)	DESIGN SPEED	POSTED SPEED
LA SALLE ST	15,000	30	25



FULL SIZE PLANS HAVE BEEN PREPARED USING STANDARD ENGINEERING SCALES. REDUCED SIZED PLANS WILL NOT CONFORM TO STANDARD SCALES. IN MAKING MEASUREMENTS ON REDUCED PLANS, THE ABOVE SCALES MAY BE USED.

BEFORE EXCAVATING CALL:
CHICAGO UTILITY ALERT NETWORK
(312) 744-7000

CONTRACT NO. 62994



PROJECT BEGINS
NB LA SALLE ST
STA 440+12

PROJECT ENDS
NB LA SALLE ST
STA 442+92

LOCATION MAP

GROSS LENGTH OF PROJECT = 280 FT (0.053 MILES)
NET LENGTH OF PROJECT = 280 FT (0.053 MILES)

STATE OF ILLINOIS
DEPARTMENT OF TRANSPORTATION
DIVISION OF HIGHWAYS

SUBMITTED FEBRUARY 8, 2008
Diane M. O'Keefe
DEPUTY DIRECTOR OF HIGHWAYS, REGION ENGINEER

March 21, 2008
Eric E. Harrell
SENIOR ENGINEER OF DESIGN AND ENVIRONMENT

March 21, 2008
Christine M. Reed
DIRECTOR OF HIGHWAYS, CHIEF ENGINEER

**PRINTED BY THE AUTHORITY
OF THE STATE OF ILLINOIS**

BOWMAN, BARRETT & ASSOCIATES INC.
CONSULTING ENGINEERS
Chicago, Illinois
312.228.0100
www.bbandainc.com

DISTRICT ONE DESIGN/CONSULTANT SERVICES PROJECT MANAGER
RAJENDRA SHAH (847) 705-4555

P:\6601\CGD\CH\W\310\SHEETS\6601_310COVER.dgn