

F.A.I. RTE.	SECTION	COUNTY	TOTAL SHEETS	SHEET NO.
90/94	*	COOK	38 +1 39	1
62998				

STATE OF ILLINOIS
DEPARTMENT OF TRANSPORTATION
DIVISION OF HIGHWAYS

**PLANS FOR PROPOSED
FEDERAL AID HIGHWAY**

F.A.I. ROUTE 90/94 (DAN RYAN EXPRESSWAY)
SECTION (2323.6-2P&2324.6-1P)I-3

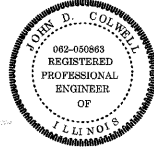
SOUTHBOUND KNEE WALLS
(PERSHING RD TO 35TH ST)

COOK COUNTY
C-91-256-05

DESIGN NUMBER
D-91-417-01



SIGNATURE *Dennis D. Mosier*
DATE Feb. 7, 2008
EXPIRES Nov. 30, 2009



SIGNATURE *John D. Colwell*
DATE Feb. 7, 2008
EXPIRES Nov. 30, 2009



SIGNATURE *Brian L. Umbright*
DATE Feb. 7, 2008
EXPIRES Nov. 30, 2008



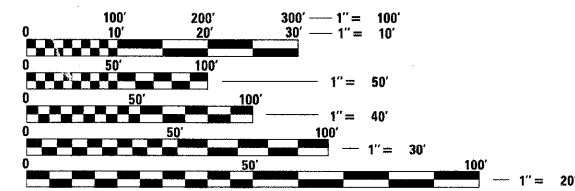
LOCATION OF SECTION INDICATED THUS: - [shaded area] -

PROJECT LOCATED IN CITY OF CHICAGO

DESIGN DESIGNATION

WENTWORTH AVE, 8275 (20) URBAN COLLECTOR

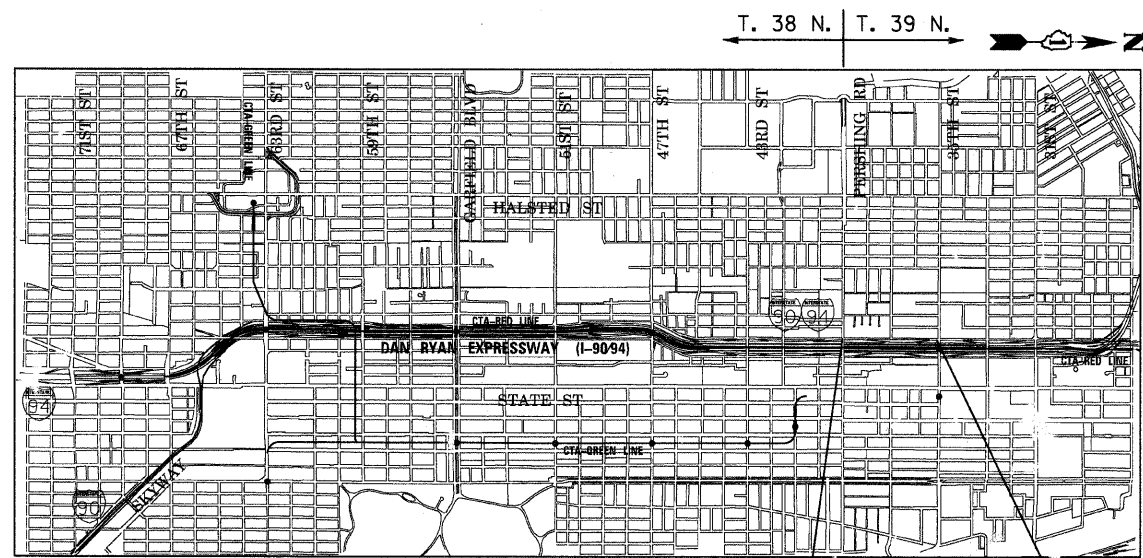
FRONTAGE ROAD:	ADT (2020)	DESIGN SPEED	POSTED SPEED
WENTWORTH AVE.	11,000	30	25



FULL SIZE PLANS HAVE BEEN PREPARED USING STANDARD ENGINEERING SCALES. REDUCED SIZED PLANS WILL NOT CONFORM TO STANDARD SCALES. IN MAKING MEASUREMENTS ON REDUCED PLANS, THE ABOVE SCALES MAY BE USED.

BEFORE EXCAVATING CALL:
CHICAGO UTILITY ALERT NETWORK
(312) 744-7000

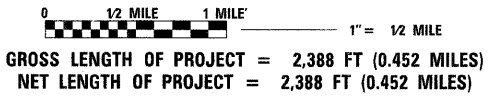
CONTRACT NO. 62998



PROJECT BEGINS
SB WENTWORTH
STA 102 + 42

PROJECT ENDS
SB WENTWORTH
STA 126 + 30

LOCATION MAP



STATE OF ILLINOIS
DEPARTMENT OF TRANSPORTATION
DIVISION OF HIGHWAYS

SUBMITTED FEBRUARY 8, 2008

Diane M. O'Keefe
DEPUTY DIRECTOR OF HIGHWAYS, REGION ENGINEER
March 24, 2008

Eric E. Sarant
SENIOR ENGINEER OF DESIGN AND ENVIRONMENT
March 31, 2008

Christine M. Reed
DIRECTOR OF HIGHWAYS, CHIEF ENGINEER

**PRINTED BY THE AUTHORITY
OF THE STATE OF ILLINOIS**

BOWMAN, BARRETT & ASSOCIATES INC.
CONSULTING ENGINEERS
Chicago, Illinois
312.228.0100
www.bbandainc.com

DISTRICT ONE DESIGNCONSULTANT SERVICES PROJECT MANAGER
RAJENDRA SHAH (847) 705-4555